

OLYMPUS®

Quick Start Guide

SP-700

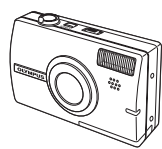
Start Here

For more information, please refer to the Basic & Advanced Manuals or visit: www.olympusamerica.com/support

OLYMPUS IMAGING AMERICA INC.

BEFORE YOU BEGIN

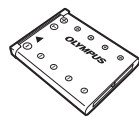
Gather these items (box contents)



Digital Camera



Strap



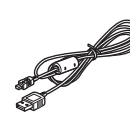
LI-40B Lithium Ion Battery



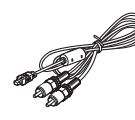
AC Adapter (S-D-1AC)



Power Cable



USB Cable



AV Cable

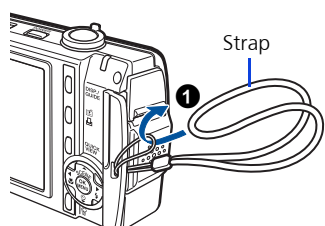


OLYMPUS Master Software CD-ROM

• Items not shown: Advanced Manual (CD-ROM), Basic Manual, warranty card. Contents may vary depending on purchase location.

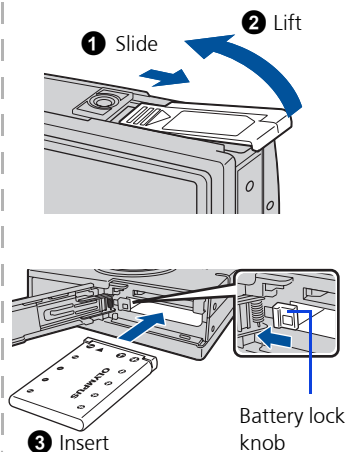
1 GET STARTED

a. Attach the strap



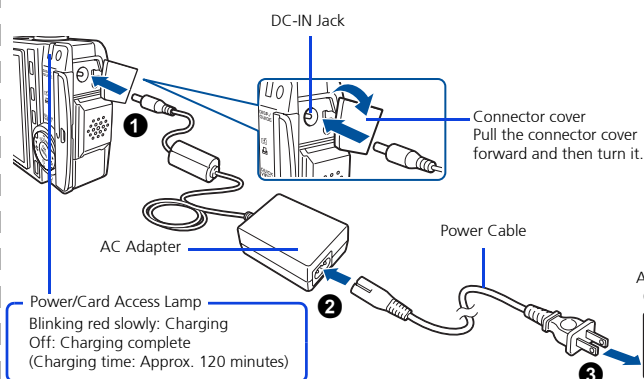
- Pull the strap tight so that it does not come loose.

b. Insert the battery



Battery lock knob

c. Charge the battery (recommended*)

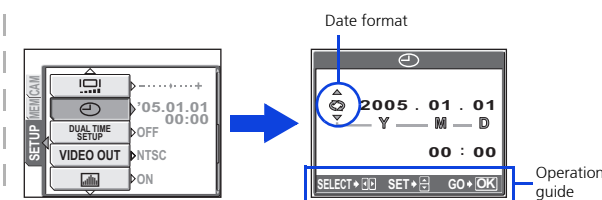
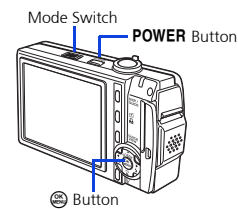


Power/Card Access Lamp
Blinking red slowly: Charging
Off: Charging complete
(Charging time: Approx. 120 minutes)

*Battery comes partially charged.

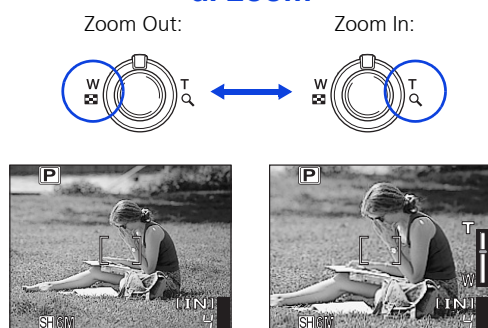
d. Set the date and time

- 1 Set the mode switch to and press the **POWER** button to turn it on.
- 2 Press to display the top menu, and select [MODE MENU] > [SETUP] > .
- 3 Press to set an item. Press to select the next field.



2 TAKE A PICTURE

a. Zoom



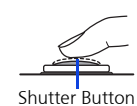
b. Focus

- 1 Using the monitor, place the AF target mark over your subject.

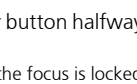
Green Lamp



(Pressed Halfway)



(Pressed Completely)

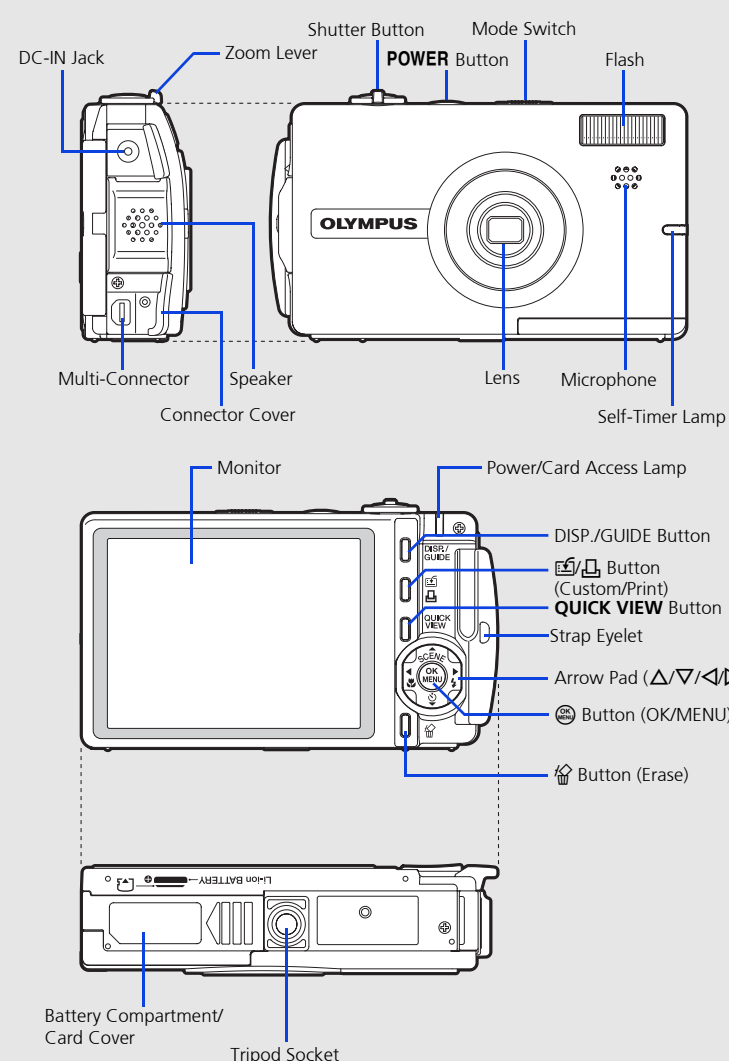


- 2 Press and hold the shutter button halfway to lock the focus.
 - The green lamp indicates the focus is locked.

c. Take the picture

- 1 Press the shutter button completely to take the picture.

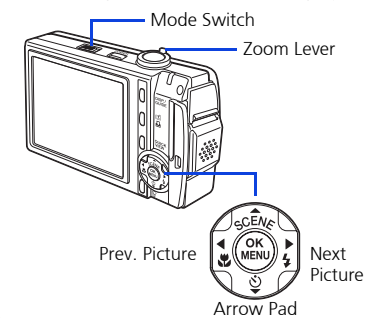
CAMERA DIAGRAM



3 REVIEW OR ERASE A PICTURE

a. Set the mode switch to

- The last picture taken will be displayed.

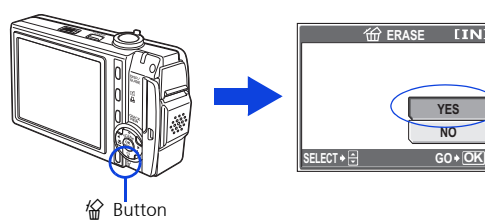


b. Take a closer look

- Turn the zoom lever towards T to enlarge the picture 10x (closeup playback) and turn it towards W to reduce the picture.
- Press to return to the original size.
- Press or to scroll around.

Set the mode switch to or to return to the shooting mode.

c. To erase a picture



- 1 Display the picture you want to erase.
- 2 Press the button.
- 3 Select [YES], and press .

- The picture is permanently erased.

4 TRANSFER IMAGES

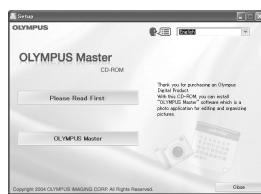
a. Install the software

- 1 Insert the OLYMPUS Master CD-ROM.

- 2 **Windows:** Click the "OLYMPUS Master" button.

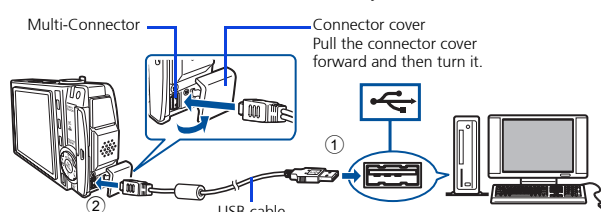
- 3 **Macintosh:** Double-click the "Installer" icon.

- 4 Simply follow the on-screen instructions.



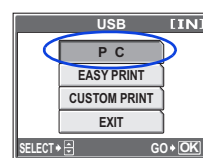
b. Connect the camera to the computer

- 1 Connect the camera to the computer using the USB cable provided with the camera.
 - The camera monitor will turn on automatically.



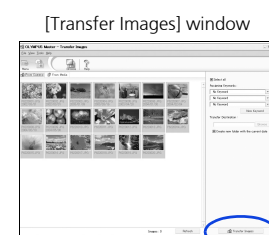
- 2 Select [PC] on the monitor, and press .

- Your PC will now recognize your camera as a removable storage drive.



c. Transfer images to the computer

- 1 With the camera now connected, open OLYMPUS Master.
 - The [Transfer Images] window is displayed.
- 2 Select the images you want to transfer, and click the [Transfer Images] button.



If the [Transfer Images] window is not displayed automatically:

- a. Click the "Transfer Images" icon on the OLYMPUS Master main menu.
- b. Click the "From Camera" icon.

