



KONICA MINOLTA

The essentials of imaging



# magicolor 7450II GA

Your professional for graphic design

magicolor 7450II GA

Colour printer 25/25 ppm

magicolor 7450II GA



# Built for one purpose: **creative colour quality**

The new magicolor 7450II GA is especially designed for the graphic arts business. As a professional in this field, vibrant photorealistic colour quality is essential for you! Whether you're a graphic artist, a designer or responsible for the art work in an advertising agency or design studio – you are well aware of the importance colour quality has for virtually all materials that you or your company create. With the magicolor 7450II GA, Konica Minolta introduces a top-performance A3+ colour printer designed especially for the creative sector.



magicolor 7450II GA

- With its single-pass tandem engine the magicolor 7450II GA delivers fast 25 A4 or 13 A3 prints per minute in colour as well as in black and white. Offering up to four paper feeders and optional duplex it is equipped for high flexibility and smooth processing of the most diverse jobs.
- Powerful performance is ensured with Konica Minolta's unique Emperon™ Print controller with fast 733MHz. The magicolor 7450II GA has 768 MB standard and 1,024 MB max. RAM, and is generously equipped with a 40 GB standard hard disk and a 1 GB network connection for fast throughput of jobs from the PC and Mac via its standard PCL and PostScript 3 capabilities.



magicolor 7450II GA  
with duplexer



magicolor 7450II GA  
with duplexer and  
simple cabinet



magicolor 7450II GA  
with duplexer,  
3 lower paper feeder  
and casterbase

## ➔ Outstanding quality & advanced technology

The magicolor 7450II GA impresses with its quality-enhancing technologies: Four dual-beam lasers ensure highest precision and reliable stability in image writing. Thanks to 9600 PhotoART it prints with 4bit contone, achieving an amazing 4096 colours per dot and with that considerably increased differentiation. True colour mixing is thus available, with smooth gradations and less visible raster.

The extremely fine and uniform particles of Simitri®, Konica Minolta's unique polymerised toner, ensure that high quality digital images are printed with great precision and yet surprisingly economically. Thanks to Simitri, text is crisp and sharp while colours are vibrant and offset by a deep, true black. At the same time Simitri® is much kinder to the environment than many other brands: toner consumption is convincingly low and the production process is eco-friendly.

## ➔ Professional media flexibility

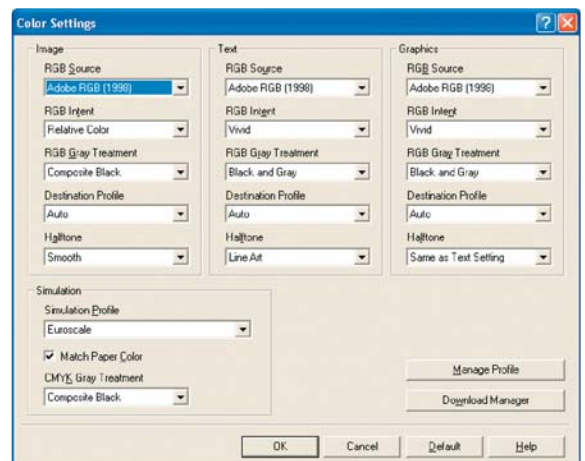
The top performance and high-quality print results of the magicolor 7450II GA are also due to its superior paper processing capabilities. They make this printer an ideal solution for the production of an extensive range of print products on a wide variety of materials, including concept books, customer presentations, photo prints, proofs, to name but a few.

The magicolor 7450II GA offers versatility with regard to size, processing formats from A6 to A3+ (311 x 457 mm) as well as banners of up to 297 x 1,200 mm. With paper weights ranging from 64 to 256 gsm the magicolor 7450II GA is perfectly suitable for the production of artwork and layouts for customer presentation folders. The whole range, including the 256 gsm thickness, can also be automatically duplexed. Varied media types, including thick paper, coated stock, glossy paper, labels and more, can be processed via the 250-sheet multipurpose feeder and the 100-sheet multi manual feed tray.

The printer's convenience with regard to media processing doesn't end there: A special A3+ wide-print mode only leaves a minute non-printable area of just 2mm on all edges. This is especially helpful for proofing, as it provides ample room at the edge for notes and instructions.

## ➔ Comprehensive colour management

Graphic artists and design studios will appreciate the high degree of control over any colour workflow, the accurate colour reproduction and the wide range of simulations, including for example proofing for offset production. ICM (Windows) and ColorSync (Apple) are supported, as well as ICC workflows for press simulations. In addition, RGB source profiles, simulation profiles and magicolor 7450II GA specific Pantone® colour tables are available, and custom profiles can be uploaded. Independent object-based colour setting is possible for documents containing photos, graphic elements and text. Especially convenient, easy-set makes the saving of job settings, including all colour adjustments, simple and straightforward and offers instant recall whenever a specific setting is needed again.



Via eAIDC – or enhanced Automatic Image Density Control – calibration of the magicolor 7450II GA is completely automatic; and consequently is absolutely reliable. For calibration, toner is applied to the transfer belt and the amount measured. The magicolor 7450II GA then automatically adjusts possibly too high or too low toner levels. This automatic calibration of the colour density is essential for high-quality colour output that remains consistent from the first print to the last, and for job after job.





KONICA MINOLTA

Simitri



## Technical specifications

### Print process

#### Print method

Desktop tandem full colour  
A3 laser beam printer

#### Print speed A4

25 ppm colour  
25 ppm monochrome

#### Print speed A3

13 ppm colour  
13 ppm monochrome

#### First page out

11.5 seconds colour  
9.5 seconds monochrome  
(standard plain paper)

#### Warm-up time

99 seconds or less

#### Max. resolution

PhotoART 9600  
(600 x 600 x 4 bit contone)

#### Duty cycle

120,000 pages per month

### Hardware and software capabilities

#### Processor

freescale PowerPC7447A  
@ 733MHz

#### Memory

768 MB standard, 1,024 MB max.

#### Hard disc (HDD)

40 GB standard

#### Printer emulations

PostScript 3 (3016), PCL 6 (XL3.0)  
PCL 5e/c

#### Direct Print

PDF (Version 1.6), JPEG, TIFF

#### Printer Management

PageScope® NetCare  
PageScope® Web Connection  
(embedded web server)  
PageScope® Network Setup  
PageScope® EMS Plug-in  
PageScope® Plug and Print  
PageScope® NDPS Gateway  
PageScope® Direct print

### Colour simulations

SWOP, Commercial Press, Eurocolor,  
DIC, TOYO Japan color, JMPA color,  
SNAP PANTONE® colour tables, ICC  
device profiles

### Fonts

137 standard PostScript fonts  
93 PCL scalable fonts  
51 symbol sets  
10 standard line printer fonts

### Interface support

10-/100-/1000-Base-T Ethernet  
supports TCP/IP, EtherTalk, IPX/SPX,  
NetBEUI, IPP 1.1, UDP, SNMP, HTTP,  
HTTPS (for PS Web Connection only)  
USB 2.0 (High-Speed)  
PictBridge (Digital camera via  
USB host)

### Operating system compatibility

#### Windows®

2000, 2003, XP, XP64, Vista 32/64

#### Macintosh®

OS X (10.2, 10.3, 10.4, 10.5)

#### Linux

Redhat v9.0, SuSE v8.2

#### Network

Network 4, 5, 6 or later

### Paper handling

#### Standard paper input

250-sheet multipurpose feeder  
100-sheet multi manual feed tray

#### Standard paper output

350-sheet face down output tray

#### Optional paper handling

500-sheet lower paper feeder  
(up to 3 units)

#### Printable area

4 mm right/ left  
4.2 mm top/bottom (A4)  
2 mm from all edges (A3W)

### Media sizes supported

A3, A3 Wide (311x457), A4, B5,  
B5(ISO), A5, A6, B6, B4, D8K, Ledger,  
Legal, Letter, G-Letter, Statement,  
Executive, Folio, UK Quatro, Foolscap,  
G-Legal, 4" x 6", 12" x 18", custom  
(90-311 x 140-1,200mm)

### Envelope sizes supported

Com10, C5, C6, DL, Monarch

### Banner sizes supported

210 x 458 to 297 x 1,200 mm

### Media weights supported

plain paper (64-90 gsm)  
thick paper 1 (91-150 gsm)  
thick paper 2 (151-209 gsm)  
thick paper 3 (210-256 gsm)

### Duplexing support (optional)

A5-A3 Wide  
64-256 gsm

### Print media supported

Plain paper, thick paper, recycled  
paper, transparency, letterhead,  
envelope, glossy paper, labels

### Physical

#### Dimensions (D x W x H mm)

648 mm x 606 mm x 477 mm

#### Weight

51 kg without consumables  
78 kg packaged to ship

### Electrical

#### Input voltage range

220 V ~ 240 V (± 10%)

#### Frequency

50 ~ 60 Hz (± 3 %)

#### Power consumption

Max. 1,450 W or less  
Average during printing 750 W or less  
Standby 130 W or less  
Energy saving 28 W or less

### Environmental

#### Temperature

10 ~ 35° C

#### Humidity

15% to 85 %

#### Noise levels

52 dB or less (A) (printing),  
40 dB or less (A) (standby)

### Regulatory/Safety conformity

Doc, CE Marking, GS, EMC, WEEE,  
EcoMark

### Consumables

#### Pre-installed

Toner  
CYMK – yield up to 3,000 pages

#### Imaging Unit

CYM – yield up to 30,000 pages  
K – yield up to 50,000 pages

#### Replacements

Toner  
CYM – yield up to 12,000 pages  
K – yield up to 15,000 pages  
Imaging Unit  
CYM – yield up to 30,000 pages  
K – yield up to 50,000 pages  
Waste toner bottle  
yield up to 18,000 pages

### Maintenance parts

#### Transfer roller and Ozone filter

Yield up to 120,000 pages

#### Transfer belt

Yield up to 120,000 pages

#### Fuser unit

Yield up to 120,000 pages

#### Pick roller

Yield up to 200,000 pages

### Warranty period and conditions

1 year on-site warranty  
(within EU; local law applies)

- All specifications relating to paper capacity refer to A4-size paper of 80 gsm quality.
- All specifications relating to printing speeds refer to A4-size paper that is printed crosswise in multipage, simplex mode.
- The support and availability of the listed specifications and functionalities varies depending on operating systems, applications, network protocols as well as network and system configurations.
- The stated life expectancy of each consumable is based on specific operating conditions such as page coverage for a particular page size (5 % coverage of A4). The actual consumables life will vary depending on the use and other printing variables including page coverage, page size, media type, continuous or intermittent printing, ambient temperature and humidity.
- Some of the product illustrations contain optional accessories.
- Specifications and accessories are based on the information available at the time of printing, and are subject to change without notice.  
Konica Minolta does not warrant that any prices or specifications mentioned will be error-free.
- Microsoft, Windows and the Windows logo are trademarks, or registered trademarks, of Microsoft Corporation in the United States and/or other countries.
- All other brand and product names may be registered trademarks or trademarks of their respective holders and are hereby acknowledged.

For extra information, go to [www.konicaminolta.eu](http://www.konicaminolta.eu)

Your Konica Minolta Business Solutions Partner:



Konica Minolta  
Business Solutions Europe GmbH  
Europaallee 17  
30855 Langenhagen • Germany  
Tel.: +49 (0) 511 74 04-0  
Fax: +49 (0) 511 74 10 50  
[www.konicaminolta.eu](http://www.konicaminolta.eu)