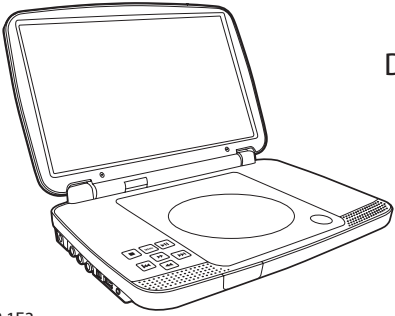




user manual

DRC99310KB Blue
DRC99310KR Red
DRC99310KP Purple



AVC Multimedia,
Markham, Ontario L3R 1E3
http://www.RCAav.com

Read these instructions before using your new product for the first time.

Safety Precautions



The lightning flash with an arrowhead symbol, within the equilateral triangle, is intended to alert the user to the presence of uninsulated "dangerous voltage" within the product's enclosure that may be of sufficient magnitude to cause an electric shock.

The exclamation point within the equilateral triangle is intended to alert the user to the presence of important operating and maintenance (servicing) instructions in this owner's manual.

WARNING: Should any trouble occur, disconnect the AC power adapter and refer servicing to a qualified technician.

WARNING: TO PREVENT FIRE OR SHOCK HAZARD, DO NOT REMOVE COVER (OR BACK). NO USER-SERVICEABLE PARTS INSIDE. REFER SERVICING TO QUALIFIED SERVICE PERSONNEL.

WARNING: TO REDUCE THE RISK OF ELECTRIC SHOCK, DO NOT EXPOSE THIS APPLIANCE TO RAIN OR MOISTURE. DO NOT PLACE OBJECTS FILLED WITH LIQUIDS ON OR NEAR THIS UNIT.

CAUTION: USE OF CONTROLS OR ADJUSTMENTS OR PERFORMANCE OF PROCEDURES OTHER THAN THOSE SPECIFIED MAY RESULT IN HAZARDOUS RADIATION EXPOSURE.

CAUTION: DANGER OF EXPLOSION IF BATTERY IS INCORRECTLY REPLACED. REPLACE ONLY WITH THE SAME OR EQUIVALENT TYPE.



This product contains a low power laser device.



THIS CLASS B DIGITAL APPARATUS COMPLIES WITH CANADIAN ICES-003.

On Placement

- Do not use the unit in places that are extremely hot, cold, dusty or humid.
- Place the unit on a flat and even surface.
- Do not restrict the air flow of the unit by placing it in a place with poor air flow, by covering it with a cloth, or by placing it on carpeting.
- To avoid magnetizing, do not place the unit near speakers or magnets.
- Do not use this unit in direct sunlight or leave the unit in a closed automobile (or similar environments) where it would be exposed to high temperatures above 104°F (40°C).
- No naked flame sources such as lighted candles should be placed on the AC power adapter or the main unit.
- The AC/DC adaptor and apparatus should not be exposed to splashing or dripping liquids, and no objects filled with liquids, such as vases, should be placed on the AC/DC adaptor and apparatus.
- The apparatus should not be exposed to dripping or splashing and that no objects filled with liquids, such as vases, should be placed on apparatus.

On Safety

- When connecting or disconnecting the AC power adapter, grip the plug and not the cord itself. Pulling the cord may damage it and create a hazard.
- When you are not going to use the unit for a long period of time, disconnect the AC power adapter.

On Condensation

- When left in a heated room where it is warm and damp, water droplets or condensation may form inside the unit. When there is condensation inside the unit, the unit may not function normally. Let the unit stand for 1 to 2 hours before turning the power on, or gradually heat the room and allow the unit to dry before use.

Ventilation Warning

- Do not block the ventilation openings or holes. If the ventilation openings or holes are blocked by a newspaper or cloth, etc., the heat may not be able to get out.
- Do not operate the unit in a confined space, such as a bookcase or built-in cabinet. Allow about 4 inches (10cm) of free space all around the unit for adequate ventilation.

Rating Plate Location

- The rating plate is located on the bottom of unit.

FCC Statements

NOTE: This equipment has been tested and found to comply with the limits for a Class B digital device, pursuant to Part 15 of the FCC Rules. These limits are designed to provide reasonable protection against harmful interference in a residential installation. This equipment generates, uses and can radiate radio frequency energy and, if not installed and used in accordance with the instructions, may cause harmful interference to radio communications. However, there is no guarantee that interference will not occur in a particular installation. If this equipment does cause harmful interference to radio or television reception, which can be determined by turning the equipment off and on, the user is encouraged to try to correct the interference by one or more of the following measures:

- Reorient or relocate the receiving antenna.
 - Increase the separation between the equipment and receiver.
 - Connect the equipment into an outlet on a circuit different from that to which the receiver is connected.
 - Consult the dealer or an experienced radio/TV technician for help.
- Warning: Changes or modifications to this unit not expressly approved by the party responsible for compliance could void the user's authority to operate the equipment.

Notes on Copyright

It is forbidden by law to copy, broadcast, show, broadcast on cable, play in public, or rent copyrighted material without permission.

Apparatus Claims of U.S. Patent Nos. 6,836,549; 6,381,747; 7,005,698; 6,516,132 and 5,583,936 licensed for limited viewing uses only.

This product incorporates copyright protection technology that is protected by U.S. patents and other intellectual property rights. Use of this copyright protection technology must be authorized by Macrovision, and is intended for home and other limited viewing uses only unless otherwise authorized by Macrovision. Reverse engineering or disassembly is prohibited.

Important Safety Instructions

- Read these instructions.
- Keep these instructions.
- Heed all warnings.
- Follow all instructions.
- Do not use this apparatus near water.
- Clean only with a dry cloth.
- Do not block the ventilation openings. Install in accordance with the manufacturer's instructions.
- Do not install near any heat sources such as radiators, heat registers, stoves, or other apparatus (including amplifiers) that produce heat.
- Do not defeat the safety purpose of a polarized or grounding - type plug. A polarized plug has two blades with one wider than the other. A grounding type plug has two blades and a third grounding prong. The wide blade or the third prong are provided for your safety. If the provided plug does not fit into your outlet, consult an electrician for replacement of the obsolete outlet.
- Protect the power cord from being walked on or pinched particularly at plugs, convenience receptacles, and the point where they exit from the apparatus.
- Only use attachments/accessories specified by the manufacturer.
- Use only with a cart, stand, tripod, bracket, or table specified by the manufacturer, or sold with the apparatus. When a cart is used, use caution when moving the cart/apparatus combination to avoid injury from tip-over.
- Unplug this apparatus during lightning storms or when unused for long periods of time.
- Refer all servicing to qualified service personnel. Servicing is required when the apparatus has been damaged in any way, such as the AC power cord or plug is damaged, liquid has spilled or objects have fallen into the apparatus, the apparatus has been exposed to rain or moisture, does not operate normally, or has been dropped.



Disc Formats

The unit can play back

DVD DVDs
[8cm/12cm disc]

COMPACT Audio CDs
[8cm/12cm disc]

CD-R CD-RW
Compatible

Region Management Information

Region Management Information: This unit is designed and manufactured to respond to the Region Management Information that is encoded on DVDs. If the region number printed on the DVD does not correspond to the region number of this unit, it cannot play that disc.

The region number of this unit is 1.



Disc Function or Operation That is Not Available

When the symbol appears on the screen, it indicates the function or operation attempted is not available at that time. This occurs because the DVD manufacturer determines the specific functions of DVDs. Certain functions may not be available on some DVDs. Be sure to read the documentation provided with the DVD.

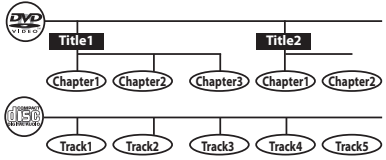
Icons Used on DVDs

Sample Icons

	Language selections for audio
	Language selections for subtitles
	Screen aspect ratio
	Multiple camera angles
	Region code indicator

Titles, Chapters and Tracks

- DVDs are divided into "titles" and "chapters". If the disc has more than one movie on it, each movie would be a separate "title". "Chapters" are sections of titles.
- Audio CDs are divided into "tracks". A "track" is usually one song on an Audio CD.



Note: Numbers identify each title, chapter, and track on a disc. Most discs have these numbers recorded on them, but some do not.

Note on Unauthorized Discs

You may not be able to play some DVDs on this unit, particularly if they were purchased from outside your geographic area or made for business purposes.

Accessories

Please check and identify the supplied accessories.

<input type="checkbox"/> Remote Control (with battery).....	x 1
<input type="checkbox"/> AC Power Adapter.....	x 1
<input type="checkbox"/> Car Power Adapter.....	x 1
<input type="checkbox"/> Earphone	x 2
<input type="checkbox"/> Headphone Splitter.....	x 1
<input type="checkbox"/> Carrying Bag.....	x 1

Remote Control

Using the Remote Control

- Point the remote control at the REMOTE SENSOR located on the unit.
- When using this unit in very bright light, the infrared REMOTE SENSOR may not work properly.



To Change Remote Battery

- Open the battery door.



- Insert one CR2025 (3V) size battery.



Battery Replacement

When the battery becomes weak, the operating distance of the remote control will be greatly reduced and you will need to replace the battery.

Note: If the remote control is not going to be used for a long time, remove the battery.

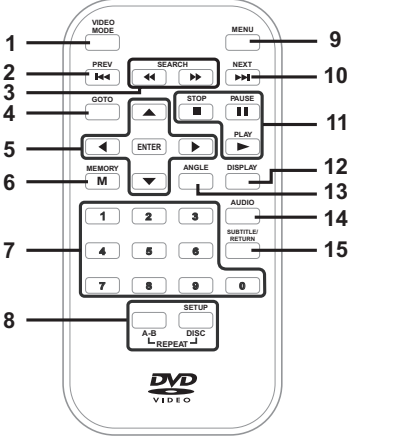
WARNING: Do not dispose of the battery in a fire or it may leak and/or explode.

WARNING: Batteries should not be exposed to excessive heat such as sunshine, fire or the like.

CAUTION: Danger of explosion if battery is incorrectly replaced. Replace only with the same or equivalent type.

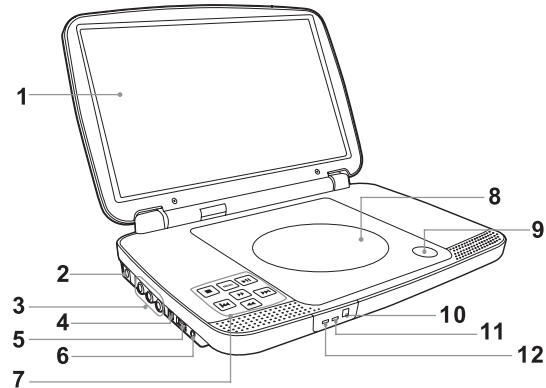
Control Reference Guide

Remote Control



- VIDEO MODE** button
Adjust Brightness, Screen Size and Contrast of the LCD screen.
- PREV** button
Move back through titles, chapters or tracks on a disc.
- SEARCH** buttons
SEARCH: Fast reverse playback.
SEARCH: Fast forward playback.
- GOTO** button
Skip directly to a location on a CD/DVD.
- Cursor (**W**, **A**, **L**, **R**) buttons
Move between selections on a menu screen and adjust certain settings.
ENTER button
Confirm selections on a menu screen.
- MEMORY** button
Set titles/chapters in a favorite order.
- Number (**0 - 9**) buttons
Use when creating programs or locating a title/chapter/track or specific time.
- REPEAT A-B** button
Perform point-to-point repeat playback on a DVD or CD.
REPEAT DISC button
Repeat a DVD chapter or title.
Repeat a CD track or the whole disc.
SETUP button
In Stop Mode, press to display the unit's SETUP menu.
- MENU** button
Enter and exit the main DVD Menu.
- NEXT** button
Skip to next title, chapter or track on a disc.
- STOP** button
Stop playing a disc.
PLAY button
Start or resume playback of a disc.
PAUSE button
Press once to pause playback. Press subsequently to advance frame by frame on a DVD.
- DISPLAY** button
Show status information on the screen.
- ANGLE** button
Switch between multiple camera angles if applicable to the DVD.
- AUDIO** button
Select one of the audio sound tracks on a DVD (if more than one is available) or select the audio output mode on a CD.
- SUBTITLE** button
Select one of the subtitle languages programmed on a DVD (if available).
RETURN button
Return to normal operation after using the SETUP menu of a DVD.

Unit

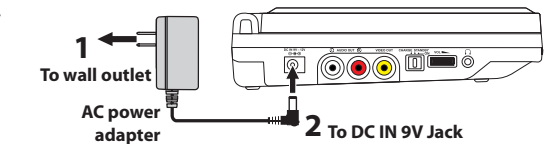


- LCD screen
- DC IN 9V - 12V** jack
- AUDIO / VIDEO OUT** jack
- CHARGE / STANDBY / ON** switch
- VOLUME** control
Adjusts the volume.
- Headphone jack
- STOP** button
Press to stop playing a disc.
MENU button
Accesses DVD Disc Menu if DVD disc is currently playing.
Accesses Setup menu if disc is not playing.
button
Press to start or resume playback of a disc. Pressing during playback of a disc will cause playback to be paused.
SEARCH button
Press to perform fast forward playback during CD playback.
In DVD Menu or Setup Menu, press to scroll up.
PREV button
Press to go back to the previous title / chapter / track.
In DVD Menu or Setup Menu, press to scroll left.
- NEXT** button
Press to advance titles / chapters / tracks.
In DVD Menu or Setup Menu, press to scroll right.
- SEARCH** button
Press to perform fast reverse playback during CD playback.
In DVD Menu or Setup Menu, press to scroll down.
- Disc Door
Push to close the disc door.
- OPEN** knob
Press the open knob to open the disc door.
- Remote sensor
Senses the remote control's signals.
- ON** indicator
- CHARGING** indicator
Charge the rechargeable battery before using it for the first time. Complete charging typically takes approximately 4-5 hours. The charging light will go out when the battery becomes fully charged.

Power Supply

A. Using the AC Power Adapter

The supplied AC power adapter operates on AC 100-120V.



Cautions:

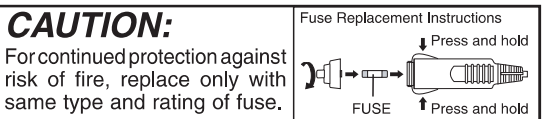
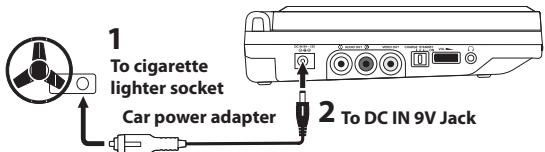
- The AC power adapter included with this unit is for its use only. Do not use it with other equipment.
- When the unit is not going to be used for long time, disconnect the AC power adapter from the wall outlet.
- When the AC power adapter is plugged in, the apparatus is not completely disconnected from the main power supply, even when the power is turned off.

Warning:

The AC/DC adaptor is used as disconnect device. The AC/DC adaptor of apparatus should not be obstructed OR should be easily accessed during intended used. To be completely disconnect the power input, the AC/DC adaptor of apparatus shall be disconnected from the mains.

B. Using the Car Power Adapter

The 12V car power adapter allows the unit to be used with vehicles that have a 12V, negative ground electrical system.



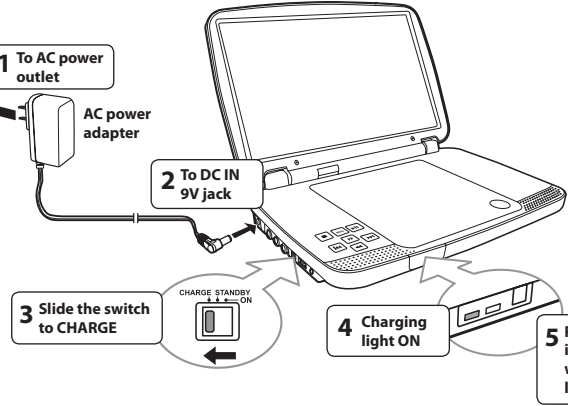
Caution:

- Use the provided 12V car power adapter only. Use with other car power adapters could damage the unit.
- The 12V car power adapter included with this unit is for its use only. Do not use it with other equipment.
- In the interest of traffic safety, do not operate this unit or view videos while driving a vehicle.
- Make sure the unit is securely fastened to prevent it from falling or flying through the air in the event of an accident.
- When the inside of the cigarette lighter socket is dirty with ashes or dust, the plug section may become hot due to poor contact. Be sure to clean the cigarette lighter socket before use.
- After use, disconnect the 12V car power adapter from both the unit and cigarette lighter socket.

C. Using the Built-in Battery

The unit has a built-in, non-replaceable, rechargeable battery. Charge the built-in battery before using it for the first time. Complete charging typically takes approximately 4-5 hours. The charging light will go out when the built-in battery becomes fully charged.

To recharge the built-in battery



Warning:

- The built-in battery can only be recharged when the unit is in CHARGE mode while using the AC power adapter.
- The built-in battery cannot be recharged when the unit is in ON mode.
- Do NOT recharge the built-in battery in a vehicle using the car power adapter.
- Batteries should not be exposed to excessive heat such as sunshine, fire or the like.

Note:

- When the built-in battery power is low, "Battery Low" will display on the screen and the unit will stop playing.
- Recharge the built-in battery when you are ready to use it again.
- While using the built-in battery, the environmental temperature should be 41°F (5°C) to 95°F (35°C).
- To get the longest service life of the built-in battery, charge at indoor-temperature.
- The built-in battery in this device may present a risk of fire or chemical burn if mistreated. Do not disassemble, heat above 212°F (100°C), or incinerate.
- The unit should not be exposed to excessive heat such as sunshine, fire or the like.
- When discarding the unit, environmental problems must be considered and local rules or laws governing the disposal of such products must be strictly followed.

Turning on the Unit

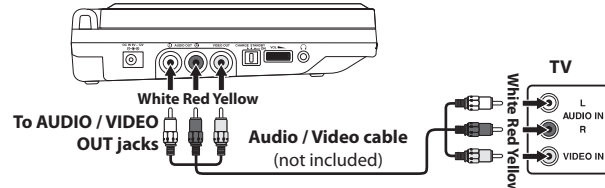
- Slide the **CHARGE / STANDBY / ON** switch on the left side of the unit to the ON position.
- The start-up picture will appear on the screen.
- After use, slide the **CHARGE / STANDBY / ON** switch to the STANDBY (power off) position.



Connections

A. Connecting a TV

If your TV has audio/video inputs, you can connect the unit to your TV using standard Audio/Video cables.

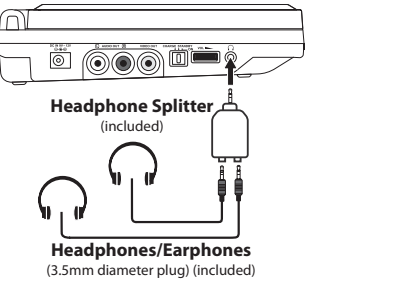


Watching a DVD on your TV

- Turn on the unit.
- Turn on the TV and follow the instructions included with it to watch video from external sources.

B. Using Headphones/Earphones

- Turn down the volume before connecting, and then adjust the level.
- When headphones/earphones are connected, no sound will be emitted from the unit's speaker.



Caution:

Avoid listening to sound at levels which may be harmful to your ears.



Playing a Disc (Basic Playback)

This owner's manual explains the basic instructions for operating this unit. Some DVDs are produced in a manner that allows specific or limited operation during playback. Therefore, this unit may not respond to all operating commands. THIS IS NOT A DEFECT. Please refer to the instructions accompanying the specific DVD in question for more information about the options available on that DVD.

“” may appear on the screen during operation. A “” means the desired operation is not permitted by the unit or disc.

Playing a Disc

- Slide the **CHARGE / STANDBY / ON** switch on the left side of the unit to the ON position. See [Customizing the function settings](#) before proceeding to step 2.
- Press the **OPEN** knob to open the disc door.
- Hold the disc by its sides and carefully place it onto the spindle with the label side facing up, pushing gently until you hear a “click”.
- Close the disc door. It takes a short while for your unit to load the disc. After loading, the unit will automatically bring you to the main menu of the DVD or start playing the DVD.
- If the unit does not automatically start playing the DVD, press the **▶ PLAY** button on the remote control or **▶** button on the unit.

Pausing Playback (Still Mode)

Press the **⏸ PAUSE** button. To resume normal playback, press the **▶ PLAY** button on the remote control or **▶** button on the unit.

For a DVD, each time you press the **⏸ PAUSE** button on the remote control, the picture advances one frame.

Stopping Playback

Press the **■ STOP** button at the location where you want to interrupt playback. To resume playback at the position where the disc was stopped, press the **▶ PLAY** button on the remote control or **▶** button on the unit.

If you press the **■ STOP** button twice, the unit's memory will be cleared and pressing the **▶ PLAY** button on the remote control or **▶** button on the unit will reset the DVD to the beginning.

Fast Forward / Fast Reverse

- Press the **⏮ SEARCH** or **⏭ SEARCH** button when a disc is playing. Each time you press the **⏮ SEARCH** or **⏭ SEARCH** button, the playback speed changes in the following sequence:
 - Press the **▶ PLAY** button on the remote control or press the **▶** button on the unit when you reach the desired point to resume normal playback.
- Note:**
- The DVD player mutes sound and subtitles during reverse and forward scan of DVDs.
 - The fast playback speed may differ depending on the disc.

Skip (Forward / Reverse)

- Press the **⏮ NEXT** button to advance titles, chapters/tracks.
- Press the **⏭ PREV** button to go back to current or previous titles, chapters/tracks.
- For an Audio CD, use the number buttons on the remote control to go directly to the desired track number.

Audio Selection

On some DVDs, the sound is recorded in two or more formats. Follow the directions below to select the preferred language and sound system.

- While a disc is playing, press the **AUDIO** button to show the current audio format number. **Audio 1/3:Dolby D 2ch English**
 - Press the **AUDIO** button repeatedly to select the desired audio format.
- Note:**
- If only one audio format is recorded on the DVD, the number does not change.
 - Some DVDs allow you to change audio selections using the disc menu only. If this is the case, press the **MENU** button and choose the appropriate language on the disc menu.
 - You can select different audio channels (Stereo, Mono Left, Mono Right or Mix-Mono) on an Audio CD by pressing the **AUDIO** button repeatedly.

Subtitle Selection

- While a DVD is playing, press the **SUBTITLE** button to display the current language setting, as shown in the example. **Subtitle 02/03:Spanish**
 - Press the **SUBTITLE** button repeatedly to select the desired subtitle language. You can turn subtitles off by pressing the **SUBTITLE** button repeatedly until the “**Subtitle Off**” is displayed.
- Note:**
- Some DVDs are set to display subtitles automatically, and you cannot turn them off even if you set the subtitle function to off.
 - During some scenes, the subtitles may not appear immediately after you select your desired scene.
 - The number of subtitle languages recorded differs depending on the disc. If only one language is recorded, the language does not change.
 - This function can only be used for discs on which subtitles have been recorded in multiple languages.
 - Some DVDs allow you to change subtitles using the disc menu only. If this is the case, press the **MENU** button and choose the appropriate subtitle on the disc menu.

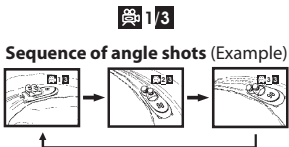
Angle Selection

Some DVDs contain scenes that have been shot from a number of different angles. For these discs, the same scene can be viewed from each of these different angles.

- While you are playing a DVD with different angles recorded, press the **ANGLE** button to view the number of current angles available. **1/3**
- Press the **ANGLE** button repeatedly to change the scene to the next recorded angle.
 - After approx. two seconds, playback will continue from the new angle selected.
 - If no button is pressed within 10 seconds, playback continues without changing the current angle.

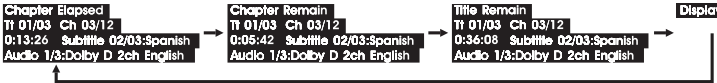
Note:

This function can only be used for discs on which scenes shot from multiple angles have been recorded.



Display Function

While the disc is playing, press the **DISPLAY** button repeatedly to display information on operation status.



Adjust the LCD Screen

You can adjust Brightness, Screen Size and Contrast of the LCD screen.

- Press the **VIDEO MODE** button.
- Press the **▲ / ▼** button to select Brightness, Screen Size or Contrast.
- Press the **◀ / ▶** button to change the setting.
- Press the **VIDEO MODE** button to exit the menu.

Repeat Playback

You can play a specific DVD title or chapter repeatedly (title repeat, chapter repeat, A-B repeat).

Repeating a Chapter

- While the DVD is playing, press the **REPEAT DISC** button until the “ Chapter” indicator displays on the screen. The current chapter is played repeatedly.

Repeating a Title

- While the DVD is playing, press the **REPEAT DISC** button until the “ Title” indicator displays on the screen. The current title is played repeatedly.

To Resume Normal Playback

- While the DVD is playing, press the **REPEAT DISC** button until the “**Repeat Off**” indicator displays on the screen.

You can play a single CD track or the whole disc repeatedly.

Repeating a Single Track

- While the CD is playing, press the **REPEAT DISC** button until the “**Repeat On**” indicator displays on the screen. The current track is played repeatedly.

Repeating the Whole Disc

- While the CD is playing, press the **REPEAT DISC** button until the “**Repeat All**” indicator displays on the screen. The whole disc is played repeatedly.

To Resume Normal Playback

- While the CD is playing, press the **REPEAT DISC** button until the “**Repeat Off**” indicator displays on the screen.

Repeating a Specific Section

You can play a specific section repeatedly.

- While the disc is playing, press the **REPEAT A-B** button at the beginning of the section (“ A” is displayed) you want to play repeatedly.
- Press the **REPEAT A-B** button again at the end of the section (“ B” is displayed).
- The unit will immediately begin replaying your selection.

To Resume Normal Playback

- While the disc is playing, press the **REPEAT A-B** button until the “ Off” indicator displays on the screen (the repeat indicator disappears from the screen for a CD). The system will return to normal playback.

Notes:

- Some discs may not permit A-B repeat operation.
- You cannot set the A-B repeat function for a segment that includes multiple camera angles.
- You can specify a segment only within the current title or track.
- There may be a slight difference between point A and the location where playback actually resumes depending on the disc.

Locating a Desired Section

Locating a Specific Chapter / Title

If you know the chapter/title number for the chapter/title that you want to play, you can locate it by directly selecting that number.

- Press the **GOTO** button. **Title 01/03 Chapter 12 / Title 03 Chapter 00/00**
- Press the **◀ / ▶** button to highlight chapter/title number, then press the corresponding number buttons (2 digits) for the chapter/title you want (for example: 02, 08, 10 or 15). If you press only 1 numeric button, press the **ENTER** button to confirm.
- Playback starts from the selected chapter/title.

Note:

- If the chapter/title number entered is not permitted by the DVD, “ Input Invalid” will display. Repeat steps 1 and 2 to re-enter the correct number.
- Some discs may not respond to this process.
- This method of locating a chapter/title is available only on a DVD that contains chapter/title numbers.

Locating a Specific Time

You can move to a specific location by entering its corresponding time (hours, minutes, seconds).

- Press the **GOTO** button two times. **Title 01/03 Time : :**
- Press the corresponding number buttons (5 digits: X:XX:XX, for example: 0 30 05, 1 08 23, 1 22 56) for the setting point you want.
- Playback starts from the selected section.

Notes:

- If the time entered is not permitted by the DVD, “ Input Invalid” will display. You should re-enter the correct time.
- Some discs may not respond to this process.

- Some scenes may not be located as precisely as you specified.
- This method for accessing specific locations is available only within the current title of the DVD.

Programmable Memory

You can combine your favorite titles/chapters/tracks and play them in the order you determine.

- During playback, press the **MEMORY** button and a program screen appears.
Clear: Delete all input programs.
Exit: Exit memory menu and return to normal playback.
Start: Start memory playback.
Next / Prev: Move to the next / previous setup page.
- Input the title (2 digits) and chapter (2 digits) by pressing the number buttons (for example: 01 02, 02 05, 02 11). It will move to the next item automatically.
 - You can use the Cursor buttons (**▼**, **▲**, **◀**, **▶**) to move the highlighted bar to any item, and re-enter the title and chapter. Press the **▶ NEXT** / **◀ PREV** to move to the next / previous setup page.
 - You can use the Cursor buttons (**▼**, **▲**, **◀**, **▶**) to move the highlighted bar to “Clear”, “Exit”, “Start” or “Next / Prev”, and press the **ENTER** button to confirm.
- Press the **▶ PLAY** button on the remote control or **▶** button on the unit to start memory playback. (“**Program**” appears on the screen).

To resume normal playback from memory playback

- Press the **MEMORY** button to display the memory menu.
- Use the Cursor buttons (**▼**, **▲**, **◀**, **▶**) to move the highlighted bar to “Stop”. Press the **ENTER** button to confirm “Stop”.
- Use the Cursor buttons (**▼**, **▲**, **◀**, **▶**) to highlight “Clear”, and then press the **ENTER** button to confirm.
- Use the Cursor buttons (**▼**, **▲**, **◀**, **▶**) to highlight “Exit”, and then press the **ENTER** button to confirm. It will return to normal playback (“**Program**” disappears from the screen).

Notes:

- For a CD, you can only arrange order for tracks. The display will be a little different.
- If the title or chapter number entered is not permitted by the DVD, it will disappear. You should re-enter correct number.
- You should input items one by one following the 1, 2, 3 ... sequence.
- If the DVD contains only one title, you can only arrange order for chapters.
- Some discs may not permit memory playback operation.
- If you select repeat during memory playback, the DVD player repeats the current memory playback.
- If you press the **MEMORY** button while the display appears on the TV screen, the display disappears.
- The programmed selections will be cleared when you press the **■ STOP** button two times, open the disc tray or turn off the DVD player.

Viewing JPEG Files

This unit can play JPEG files recorded on a CD-R or CD-ROM disc (CD-RW is not recommended).

Viewing JPEG Files

- Press the **OPEN** knob to open the disc door.
- Hold a JPEG file disc by its edges and gently push it onto the spindle with the label side facing up until you hear a “click”.
- Close the disc door. The JPEG files on the disc will be displayed one by one automatically. If the disc does not play automatically, press the **▲ / ▼** button to select a file and press the **▶ PLAY** button on the remote control or **▶** button on the unit.
- Press the **MENU** or **■ STOP** button to display a folder list. Press the **▲ / ▼** button to highlight a JPEG file to play. Press the **▶ PLAY** button on the remote control or **▶** button on the unit to start playback.

Notes:

- You can press the **⏸ PAUSE** button on the remote control or **▶** button on the unit to freeze the picture. Press the **▶ PLAY** button on the remote control or **▶** button on the unit to resume picture slide show.
- You can press the **■ STOP** button to quit playback.
- You can press the **◀ PREV** or **▶ NEXT** button to change the picture.
- You can press the **ANGLE** button to rotate direction of the picture by 90°.
- Some discs may not permit this operation.

Customizing the Function Settings

Language Setup

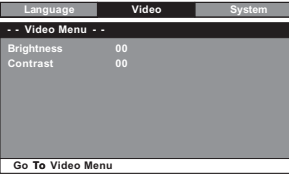
- Press the **SETUP** button on the remote control or **MENU** button on the unit in stop mode (when disc is not playing).
- Press the **▼** button to select Language Menu.
- Press the **▲ / ▼** button to select the option (Player Menu, Audio, Subtitle or Disc Menu), then press the **▶** button.
- Press the **▲ / ▼** button to select your preferred language, then press the **ENTER** button to confirm.
- Repeat steps 3 and 4 to adjust other options. Press the **◀** button to return to the previous menu.
- Press the **SETUP** or **RETURN** button to exit the menu.

Notes:

- Some DVDs may not play in the audio language you selected. A prior language may be programmed on the disc.
- Some DVDs may be set to display subtitles in a language other than the one you selected. A prior subtitle language may be programmed on the disc.
- Some DVDs allow you to change subtitle selections using the disc menu only. If this is the case, press the **MENU** button and choose the appropriate subtitle language from the selection on the disc menu.
- Some DVDs may not include your pre-selected language. In this case, the DVD player automatically displays disc menus consistent with the disc's initial language setting.

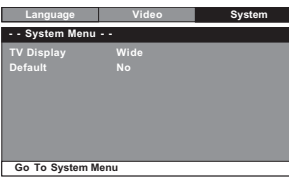
Video Setup

- Press the **SETUP** button on the remote control or **MENU** button on the unit in stop mode (when disc is not playing).
- Press the **◀ / ▶** button to select Video Menu.
- Press the **▲ / ▼** button to select the option (Brightness or Contrast), then press the **▶** button.
- Press the **◀ / ▶** button to adjust the setting, then press the **ENTER** button to confirm.
- Repeat steps 3 and 4 to adjust other options. Press the **◀** button to return to the previous menu.
- Press the **SETUP** or **RETURN** button to exit the menu.



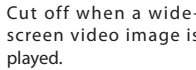
System Setup

- Press the **SETUP** button on the remote control or **MENU** button on the unit in stop mode (when disc is not playing).
- Press the **◀ / ▶** button to select System Menu.
- Press the **▲ / ▼** button to select the option (TV Display or Default), then press the **▶** button.
- Press the **▲ / ▼** button to adjust the settings, then press the **ENTER** button to confirm.
- Repeat steps 3 and 4 to adjust other options. Press the **◀** button to return to the previous menu.
- Press the **SETUP** or **RETURN** button to exit the menu.



TV Display

- Pan Scan
 - When wide-screen video is played, this mode clips the right and left sides of the image so that it can be viewed on a conventional screen.
 - Some wide-screen DVDs that do not permit Pan Scan mode playback are automatically played in letterbox mode (black bands that appear at the top and bottom of the screen).
- Letter Box
 - When wide-screen video is played in this mode on a conventional screen, black bands appear at the top and bottom of the screen.
- Wide Screen
 - This is the correct mode for playing wide-screen videos on the unit screen or other external wide-screens.



Pan Scan



Letter Box



Wide Screen

Notes:

- The displayable picture size is preset on the DVD. Therefore the playback picture of some DVDs may not conform to the picture size selected.
- When you play DVDs recorded in the 4:3 aspect ratio, the playback picture will always appear in the 4:3 aspect ratio regardless of the TV display setting.
- Select Wide Screen to conform the LCD screen on the unit. Always be sure that your TV display conforms to the actual TV in use if you connect the unit to a TV.

Default

It takes 3-5 seconds to reset the DVD settings to the factory default.

Sound System

Dolby Digital

Dolby Digital is a technology developed by Dolby Laboratories. Soundtracks encoded in Dolby Digital can reproduce from one to 5.1 discrete channels of excellent quality audio. The unit automatically recognizes the Dolby Digital bitstream and provides a downmix suitable for two-channel listening. An additional Dolby Digital decoder is required for reproduction of the discrete multi-channel soundtracks available on many DVDs.



Manufactured under license from Dolby Laboratories. Dolby and the double-D symbol are trademarks of Dolby Laboratories.

Maintenance

Cleaning the Disc

A defective or soiled disc inserted into the unit can cause sound to drop out during playback.

Handle the disc by holding its inner and outer edges.

- Do NOT touch the surface of the unlabeled side of the disc.
- Do NOT stick paper or tape on the surface.
- Do NOT expose the disc to direct sunlight or excessive heat.
- Clean the disc before playback. Wipe the disc from the center outward with a cleaning cloth.
- NEVER use solvents such as benzene or alcohol to clean the disc.
- Do NOT use irregular shaped discs (example: heart shaped, octagonal, etc.). They may cause malfunctions.



Cleaning the Unit

- Be sure to turn the unit off and disconnect the AC power adapter before cleaning the unit.
- Wipe the unit with a dry soft cloth. If the surfaces are extremely dirty, wipe clean with a cloth that has been dipped in a weak soap-and-water solution and wrung out thoroughly, then wipe with a dry cloth.
- Never use alcohol, benzene, thinner, cleaning fluid or other chemicals. Do NOT use compressed air to remove dust.

Important Note

- Before transporting the unit, remove the disc from the disc compartment.

Carrying Bag Installation

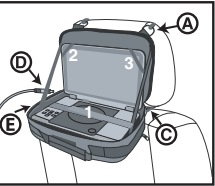
CAUTION:

- Do not use this DVD player case as a swing, car seat, or for any other purpose except to hold a DVD player and accessories.
- The DVD player case is intended for viewing only from the rear seats. Do not install or use this product in the front seat of a vehicle.
- To reduce the chance of injury in case of a collision or sudden stop:
 - Always keep DVD player strapped securely inside case while vehicle is moving.
 - Always keep DVD player case securely attached inside vehicle while the vehicle is moving.
- Always position the plastic hooks and strap adjustment slider so that they do not touch the back of the head of the person in the front seat.

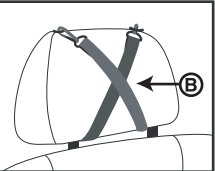
To Attach the DVD Player Case to a Headrest (Images 1 & 2)

- Insert the DVD player into the case as shown right (1, 2, 3).
- Unzip the main compartment that holds the player; locate the D rings at the top of the case (A).
- Locate 2 straps with hooks on each end.
- Hook one end of the each strap to the D rings at the top of the case.
- Criss-cross the straps around the front of the headrest (B) and hook the straps to a second set of rings on the lower part of the case (C).
- Tighten up the straps until the unit is secured. Connect the 12V car adapter as shown on the right (D).
- Connect headphone splitter (for earphone) as shown on the right (E).

Images 1



Images 1



Note: Before closing the bag, release the left and right elastic bands from the screen panel.

- CAUTION:**
- High temperature damages CDs/DVDs.
 - Do not store in closed cars.
 - Protect from direct sunlight.

Troubleshooting Guide

Symptom	Cause (and remedy)
No power.	<ul style="list-style-type: none">Ensure the AC power adapter is connected.The unit is not turned on.
The remote control does not function.	<ul style="list-style-type: none">Make sure the infrared remote sensor is not blocked.Make sure the plastic sheet has been removed from the remote control.Point the remote directly at the infrared remote sensor on the unit.Replace the battery in the remote control with a new one.
No sound or only a very low-level sound is heard.	<ul style="list-style-type: none">The volume control is located on the side of the unit – please try adjusting this.The system is in pause mode. Press the ▶ button to return to normal play mode.The unit is in fast-forward or fast-reverse mode. Press the ▶ PLAY button on remote control to return to normal play mode.Make sure the AUDIO/VIDEO output connections are correct.The DTS DVD cannot be decoded to have speaker output.The unit is too hot; shut off the unit for 30 minutes to cool it down.
No picture.	<ul style="list-style-type: none">The region number of the disc doesn't match the region number of this unit.
The picture is not clear.	<ul style="list-style-type: none">Clean the disc.The disc is scratched.Adjust the LCD's brightness and contrast using the VIDEO MODE button on the remote control.
Severe hum or noise is heard.	<ul style="list-style-type: none">The plugs and jacks are dirty. Wipe them with a cloth slightly moistened with alcohol.Clean the disc.
The disc does not play.	<ul style="list-style-type: none">There is no disc inside (“No Disc” appears on the screen).Insert the disc correctly with the playback side facing down.Clean the disc.A non-NTSC disc has been inserted. The unit and disc region number are incompatible.Condensation may have formed inside the unit due to a sudden change in temperature. Wait about an hour for it to clear and try again.

Specifications and external appearance are subject to change without notice.

Need More Help?

Please visit online help at <http://www.RCAav.com>