



Libero Line Series Bottle Cooler

ITEM # _____

MODEL # _____

PROJECT NAME # _____

SIS # _____

AIA # _____



Libero Line Series Bottle Cooler

601664 (BOTC1U0) Bottle Cooler - 120 V/1p/60Hz

Short Form Specification

Item No. _____

Unit shall be Electrolux Bottle Cooler 601664 and shall feature: Six cooling chambers made of aluminum tubes and aluminum bottom cooled by thermoelectric technology. There are no moving parts, no chlorofluorocarbons and is very lightweight. Plug & Play mobile tabletop appliance. 120V single phase electric. Cord and NEMA 5-15 plug included.

Main features

- Holding temperature of the cooling chambers between 34-41 °F. The bottle cooler is not designed to cool down liquids or food but only to maintain food product cold. Cooling performance is optimized if starting temperature of food product is within range 34-41 °F.
- Installed electric power: 0.25 kW.
- Cooling chamber dimension:
 - Width: 3.15"
 - Depth: 7.68"
- External dimensions:
 - Height: 8-19/32"
 - Depth: 11-3/8"
 - Width: 20-9/32"
- ETL electrical and sanitation listed.
- NEMA # : 5-15P.
- Net weight – 31 lbs.
- 2 year parts warranty, 1 year labor.



NEMA #: 5-15P

Approval: _____

Electrolux Professional, Inc.

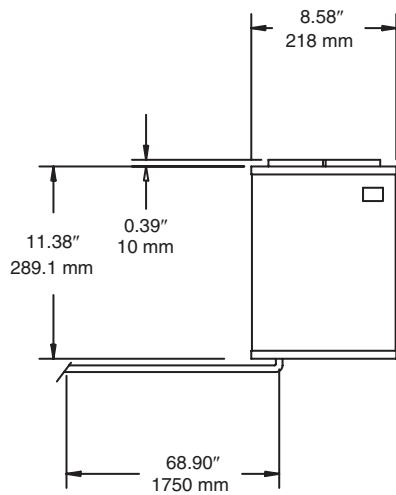
www.electroluxusa.com/professional

3225 SW 42nd Street, Fort Lauderdale, Florida, 33312 • Telephone Number: 866-449-4200 • Fax Number: 954-327-6789

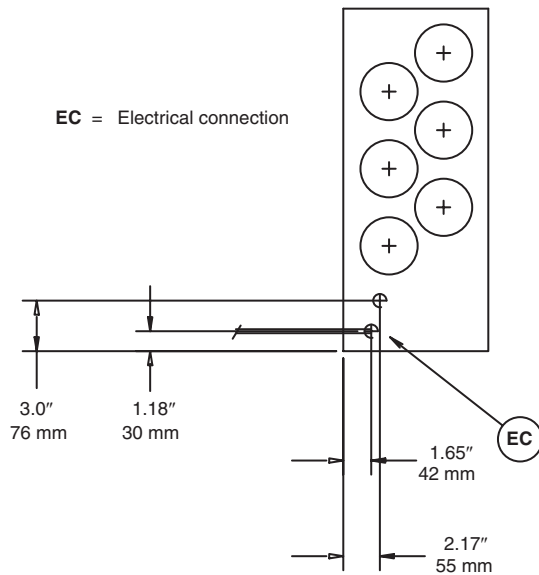
Electrolux

**Libero Line Series
Bottle Cooler**

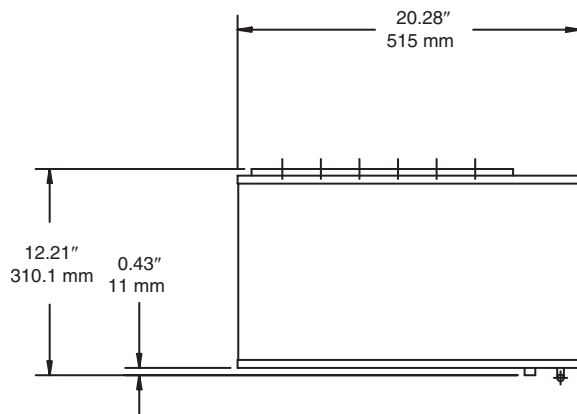
Front View



Top View



Side View



Electric

Supply voltage:

601664 (BOTC1U0) Bottle Cooler - 120 V/1p/60Hz - 1.85A