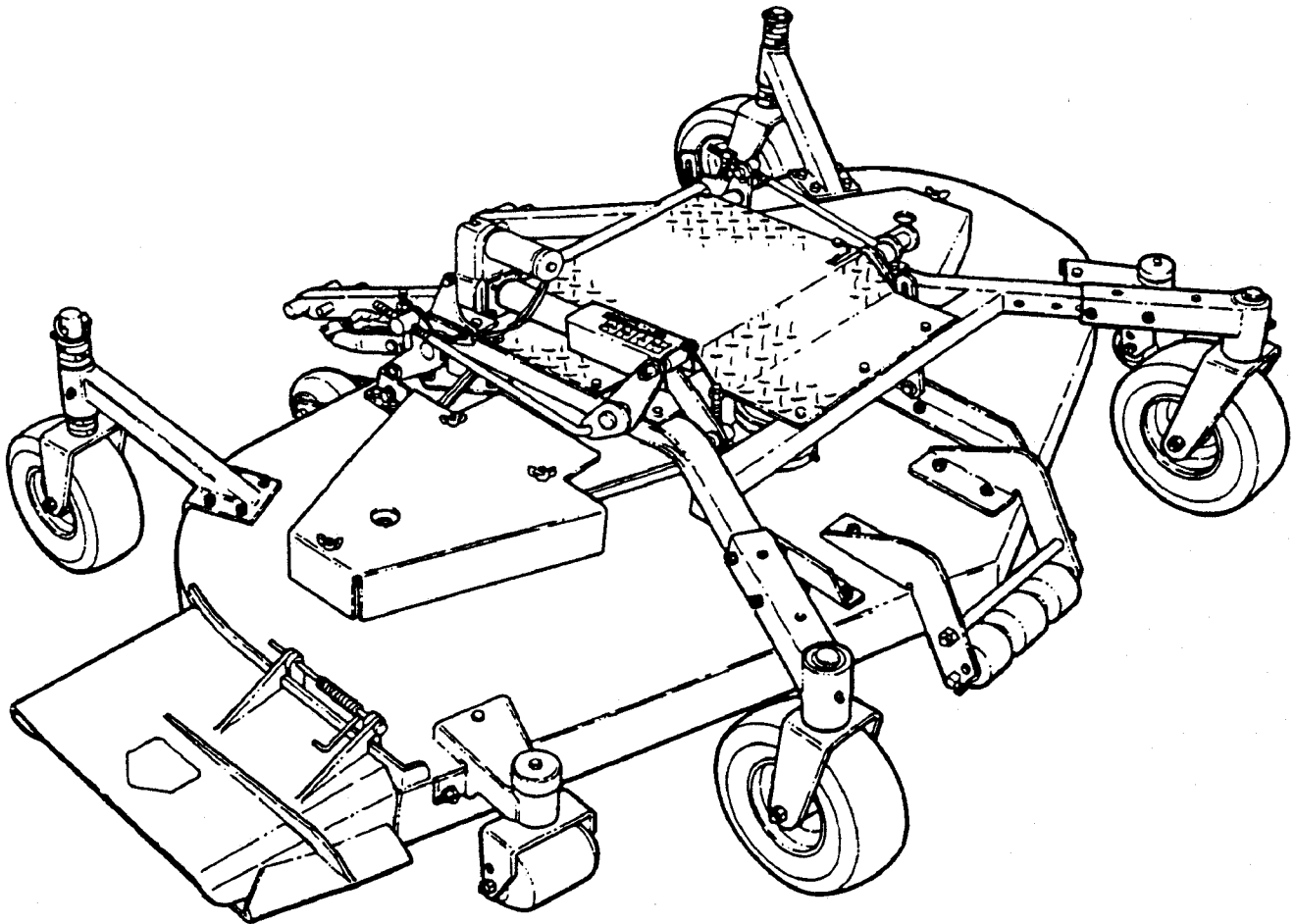


Parts Manual For

SNAPPER®

73" MOWER DECK ASSEMBLY for OUT FRONT Z-RIDER

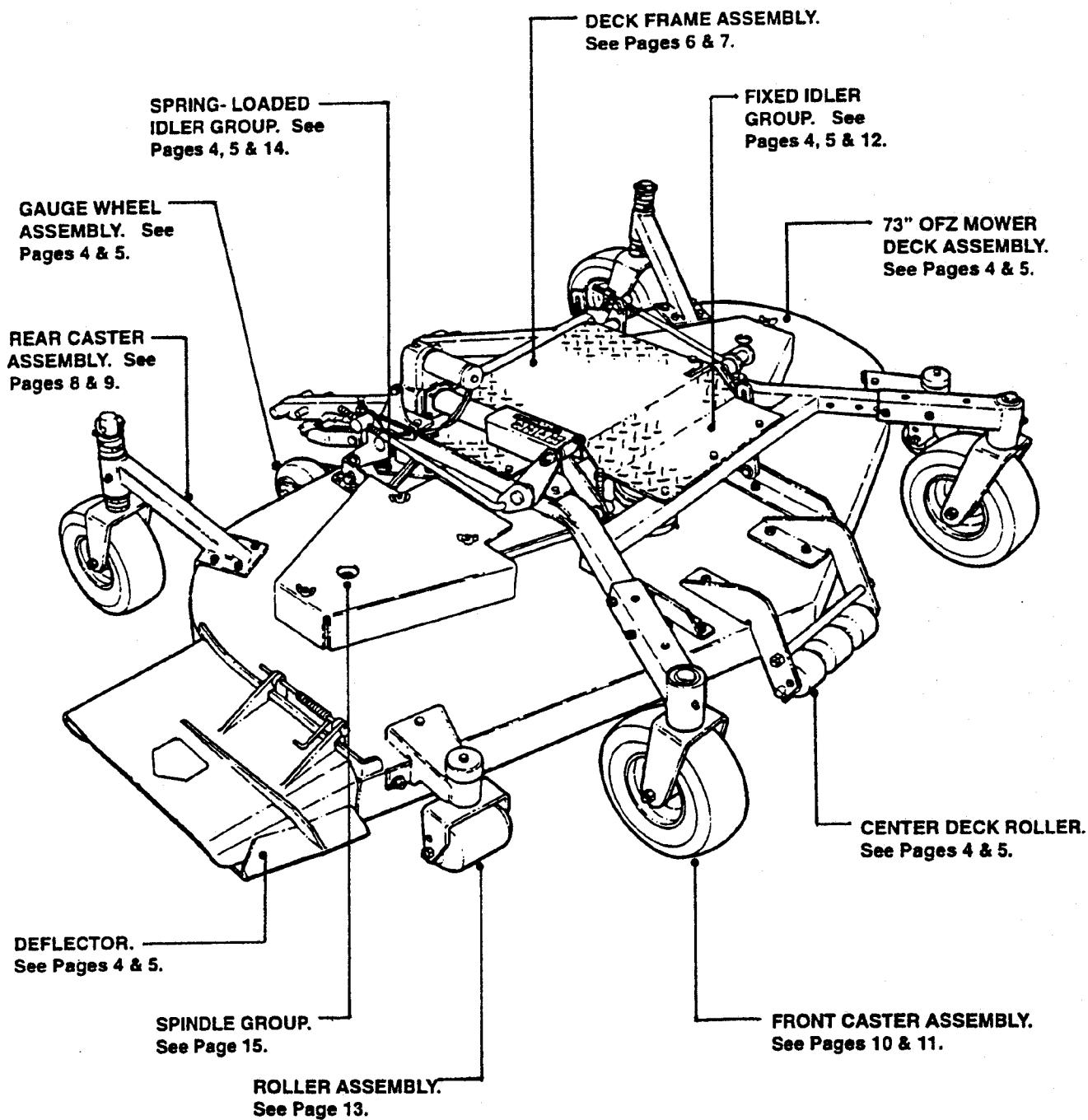


SNAPPER® McDonough, GA., 30253 U.S.A.

CONTENTS

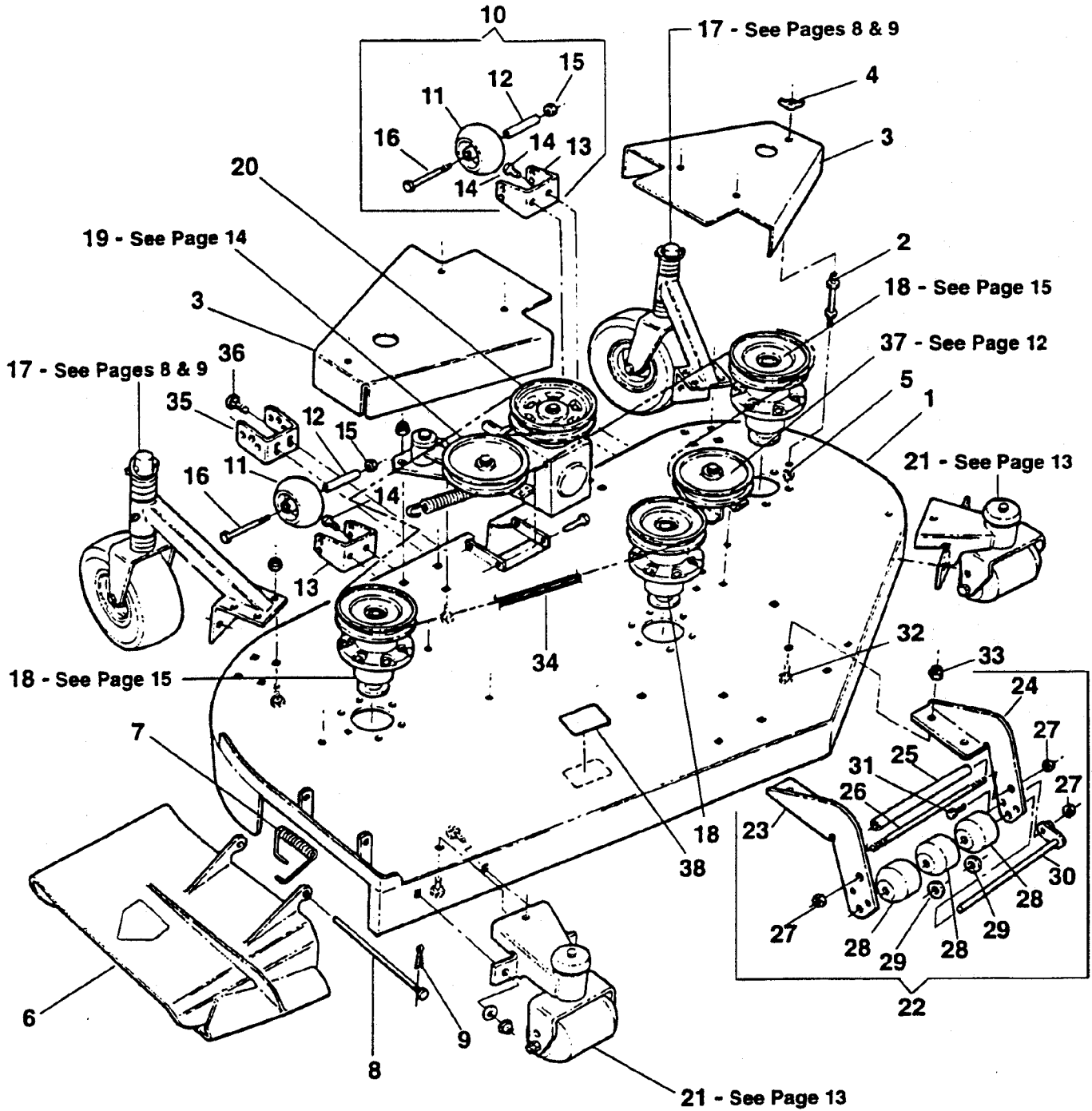
Page	Description/Group
3	FAMILIARIZATION – 73” OFZ MOWER UNIT
4, 5	73” OFZ MOWER DECK ASSEMBLY
6, 7	DECK FRAME ASSEMBLY
8, 9	REAR CASTER ASSEMBLY
10, 11	FRONT CASTER ASSEMBLY
12	FIXED IDLER GROUP
13	ROLLER ASSEMBLY
14	SPRING-LOADED IDLER GROUP
15	SPINDLE GROUP

FAMILIARIZATION - 73" OFZ MOWER UNIT



73" OFZ MOWER DECK ASSEMBLY

(For Components Breakdown see Pages as Indicated)



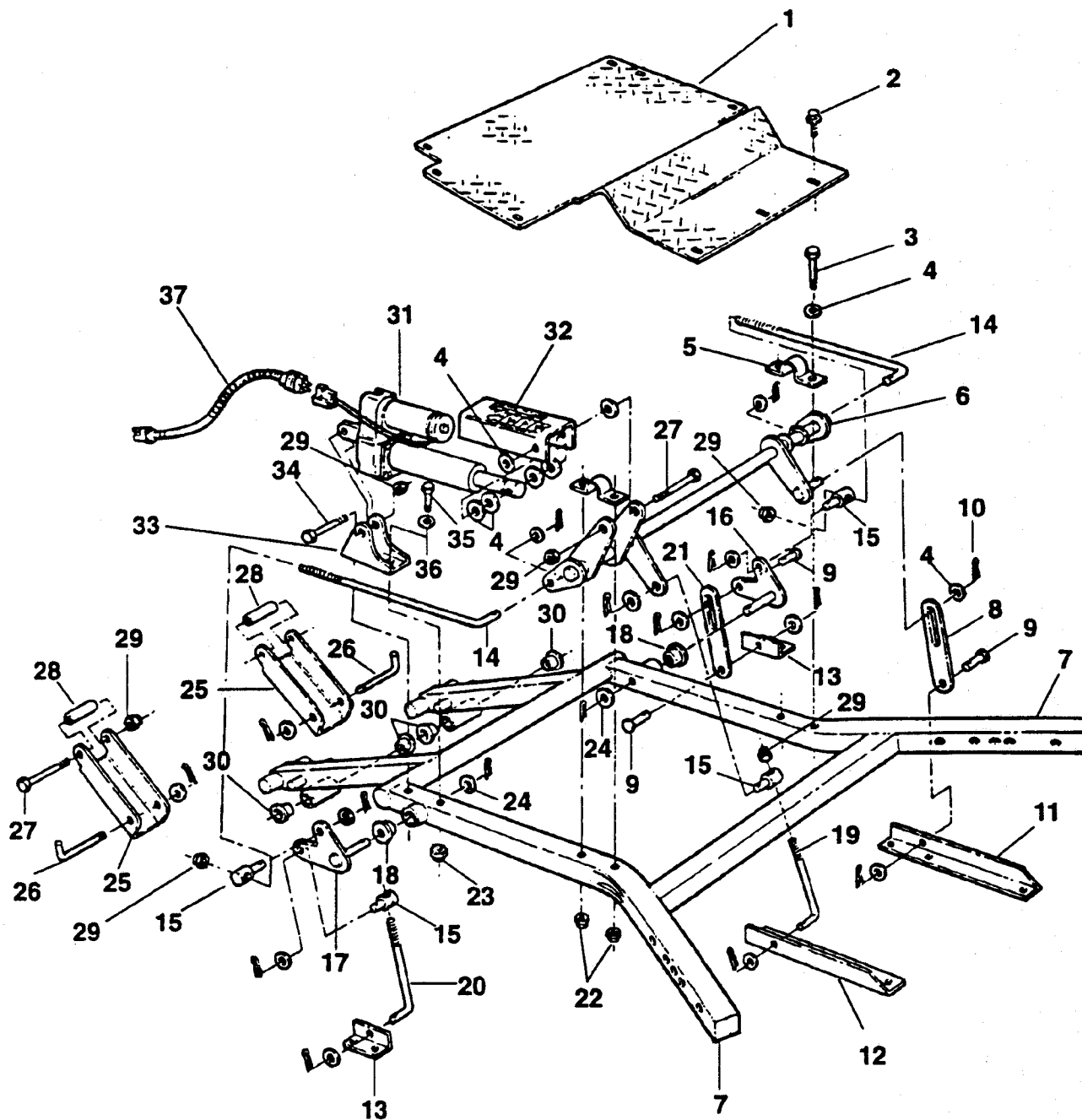
73" OFZ MOWER DECK ASSEMBLY

ITEM	PART NO.	DESCRIPTION
1	4-1901	WELDMENT, 73" OFZ MOWER DECK
2	2-8864	STANDOFF, 3 1/2" (6)
3	4-6644	GUARD, Belt (2)
4	9-1049	WINGNUT, 3/8-16 (6)
5	9-1299	NUT, 3/8-16 Hex Nyloc (6)
6	4-7139	DEFLECTOR, Chute, 73" Deck (Weldment)
7	2-7950	SPRING, Chute
8	2-9277	HINGE PIN, Chute
9	9-1313	PIN, 3/32 x 1" Cotter
10	5-4465	ASSEMBLY, Gage Wheel (Includes items 11 thru 16) (2)
11	2-9264	WHEEL, Gage
12	3-6456	SPACER, Gage Wheel
13	3-6457	FORK, Gage Wheel
14	9-1304	SCREW, 3/8-16 x 1" Hex Head Cap (2)
15	9-1325	NUT, 1/2-13 Nyloc
16	9-1822	SCREW, 1/2-13 x 5" Hex Head Cap (2)
17	--	GROUP, 9" Caster (Rear) (2) (See Pages 8 & 9)
18	--	GROUP, Spindle (3) (See Page 15)
19	--	GROUP, Spring-Loaded Idler (See Page 14)
20	4-6624	GEARBOX, Right Angle
21	5-4695	ASSEMBLY, Roller (2) (See Page 13)
22	5-7822	ASSEMBLY, Center Deck Roller (Includes items 23 thru 33)
23	3-6458	MOUNT, Roller (R.H.)
24	3-6459	MOUNT, Roller (L.H.)
25	3-6460	ROLLER, Tube
26	3-6461	ROD, Threaded Roller
27	9-1325	NUT, 1/2-13 Nyloc (3)
28	7-9226	ROLLER, Low Density Poly (3)
29	2-7344	WASHER, 5/8" SAE Flat (2)
30	2-7327	WELDMENT, Pivot Pin
31	9-1884	SCREW, 1/2-13 x 1 1/2"
32	9-1640	BOLT, 3/8-16 x 1" Carriage, Grade 5 (4)
33	9-1299	NUT, 3/8-16 Hex Nyloc (4)
34	4-1896	BELT, 164" HB Section
35	4-6623	BRACKET, Rear Deck Hanger (2)
36	9-1640	BOLT, 3/8-16 x 1" Carriage, Grade 5 (YZ)
37	--	GROUP, Fixed Idler (See Page 12)
38	4-6371	DECAL, 73 Deck

(BELOW ITEMS NOT ILLUSTRATED)

-	--	GROUP, ZF73 Decal
-	1-3010	DECAL, Warning
-	2-2522	DECAL, Warning
-	2-4156	DECAL, Caution

DECK FRAME ASSEMBLY



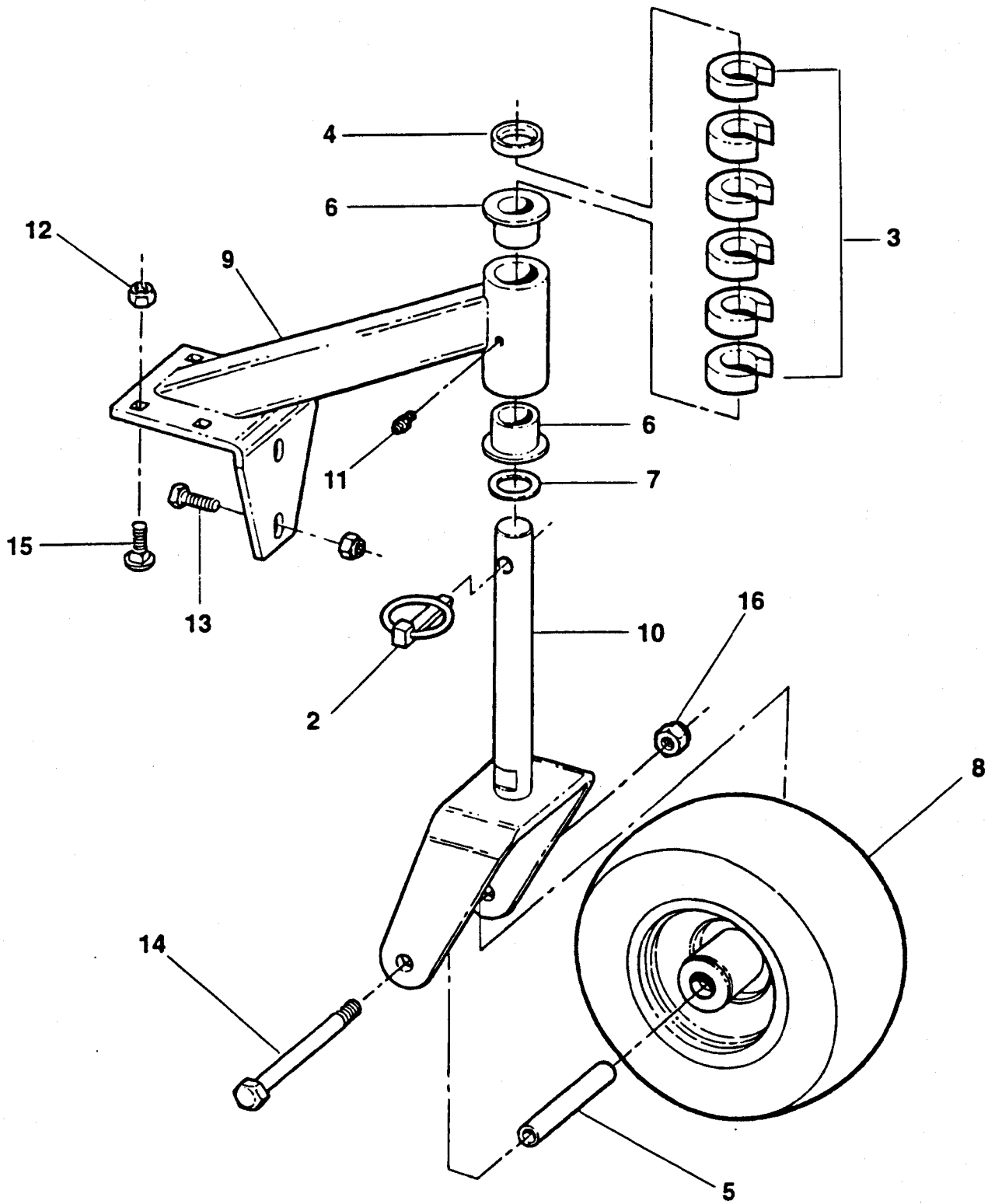
NOTE: UNLESS OTHERWISE NOTED, ALL FLATWASHERS ARE ITEMS 4 (22 TOTAL), AND ALL COTTER PINS ARE ITEMS 10 (16 TOTAL).

DECK FRAME ASSEMBLY

ITEM	PART NO.	DESCRIPTION
1	4-7171	PLATE, Diamond Tread Foot
2	9-1523	SCREW, 5/16-18 x 5/8" Hex Self-Tapping (8)
3	9-0219	SCREW, 5/16 x 2 1/2" Hex Head Cap (4)
4	9-1587	WASHER, .531 x 1.062 x .121 SAE Flat (22)
5	4-3803	BRACKET, Deck Lift Hanger (2)
6	4-6595	ARM, Front Lift (Weldment)
7	4-7130	FRAME, Deck (Weldment)
8	4-6602	BAR, 7" Lift
9	1-2802	PIN, 1/2 x 1 1/8" Clevis (YZ) (2)
10	9-1516	PIN, 5/32 x 1" Cotter (16)
11	4-6508	ANGLE, Front Deck Mounting (L.H.)
12	4-6507	ANGLE, Front Deck Mounting (R.H.)
13	4-3803	BRACKET, Deck Lift, Rear (2)
14	4-6598	ROD, Timing, 1/2" Threaded (2)
15	4-6599	SWIVEL, .50 Thru Hole (4)
16	4-6596	ARM, Rear Bellcrank (L.H.) (Weldment)
17	4-6597	ARM, Rear Bellcrank (R.H.) (Weldment)
18	3-5496	BEARING, .75 I.D. (4)
19	4-6856	J-BOLT, 1/2" Dia. x 8 1/2" Long (Front)
20	4-6857	J-BOLT, 1/2" Dia. x 7" Long (Rear)
21	4-6603	BAR, 5.62 Lift
22	9-1298	NUT, 5/16-18-3B Esna (YZ) (4)
23	9-1299	NUT, 3/8-16 Nyloc (YZ) (2)
24	9-0863	WASHER, 13/16 x 1 15/32" (HS) (2)
25	4-6594	CHANNEL, Deck Stabilizer (2)
26	4-7178	J-BOLT, Deck Attachment (2)
27	9-0735	BOLT, 1/2-13 x 4" Hex (HO) (3)
28	4-6605	SLEEVE, Stabilizer (2)
29	9-1922	NUT, 1/2-13 Nyloc, Regular (YZ) (2)
30	2-9258	BUSHING, Suspension (4)
31	3-6448	LINEAR ACTUATOR, 1000 Lbs., 4" Stroke
32	3-6454	INDICATOR, Height Of Cut
33	4-6593	BRACKET, Actuator Anchor
34	9-1218	SCREW, 1/2 UNC x 2.5 Hex Head Cap
35	9-1501	SCREW, 3/8-16 x 2.5 Hex Head Cap (2)
36	9-1514	WASHER, .406 x .812 x .075" (YZ) (2)
37	4-7166	WIRE HARNESS, Deck Lift

REAR CASTER ASSEMBLY

1 - COMPLETE

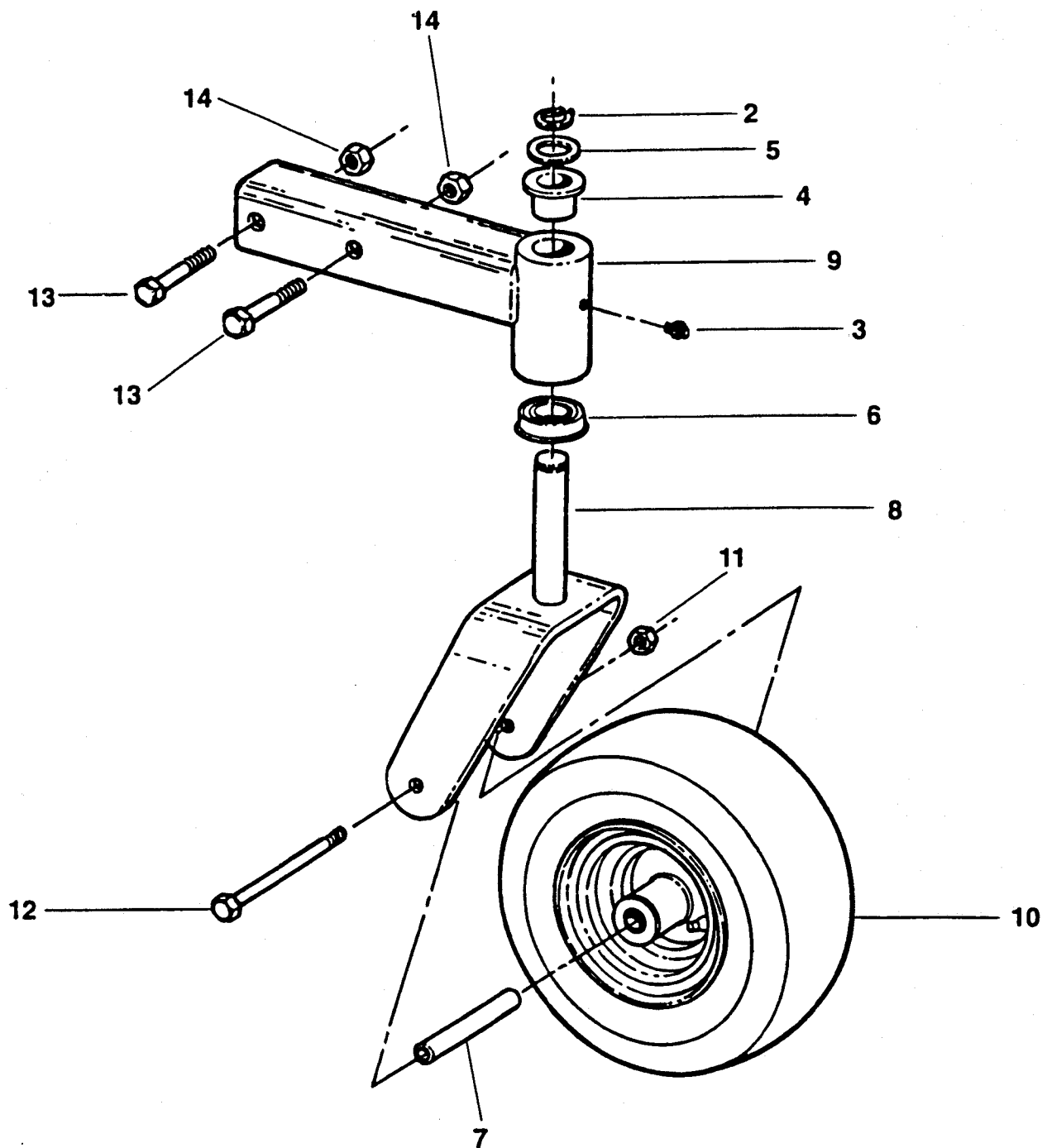


REAR CASTER ASSEMBLY

ITEM	PART NO.	DESCRIPTION
1	5-7738	ASSEMBLY, Rear Caster, 73" OFZ Deck (Includes items 2 thru 16)
2	1-7711	PIN, 7/16" Lynch (HD)
3	1-9152	SPACER, Caster (6)
4	2-1960	SPACER, 1 x 1 3/8 x .300" (PM)
5	2-2151	SPACER, Axle Sleeve
6	2-3556	BUSHING, Caster (2)
7	2-3747	BUSHING, 1" Machine
8	2-9869	ASSEMBLY, Wheel/Tire, 9 x 3.50 - 4
9	4-6515	SUPPORT, Caster (Weldment)
10	4-6523	YOKE, Caster (Weldment)
11	7-6998	FITTING, Lube, 1/4-28 Straight
12	9-1299	NUT, 3/8-16 Hex Nyloc (6)
13	9-1304	SCREW, 3/8-16 x 1" Hex Head Cap (2)
14	9-1326	SCREW, 1/2-13 x 5.5 Hex Head Cap
15	9-1640	BOLT, 3/8-16 x 1" Carriage (4)
16	9-1922	NUT, 1/2-13 Nyloc, Light

FRONT CASTER ASSEMBLY

1 - COMPLETE ASSEMBLY

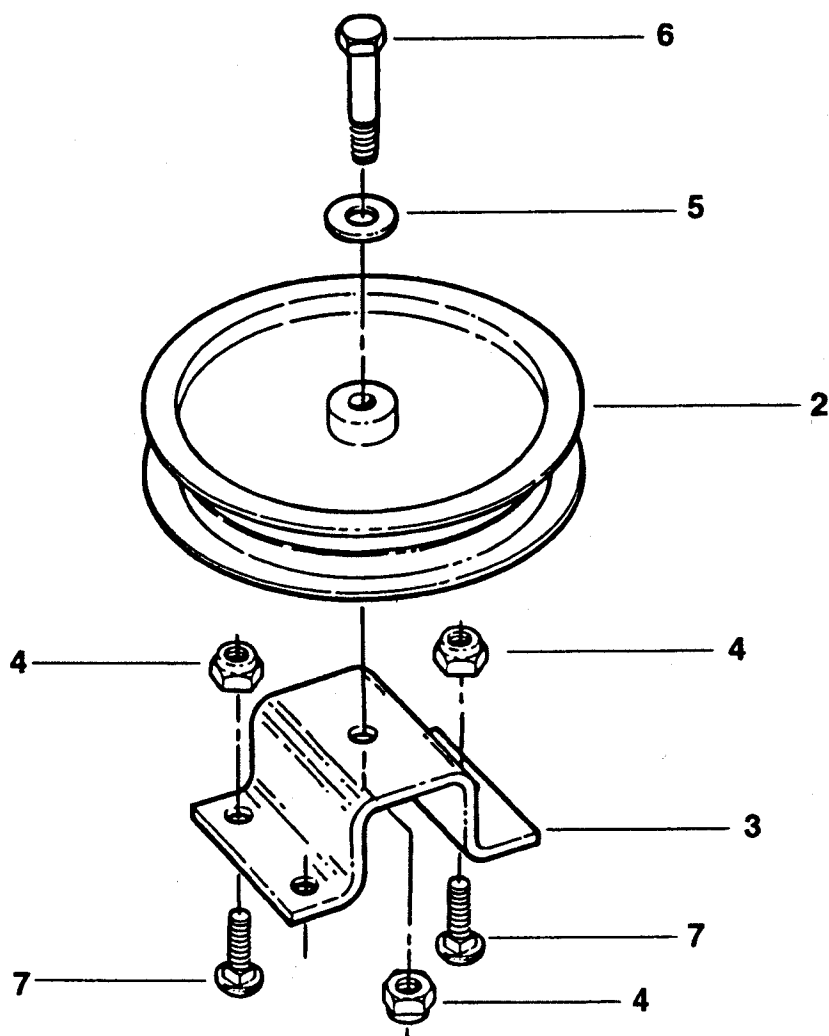


FRONT CASTER ASSEMBLY

ITEM	PART NO.	DESCRIPTION
1	5-7774	ASSEMBLY, 11" Front Caster (Includes items 2 thru 14)
2	1-2709	RING, 1" External Retaining
3	1-3864	FITTING, 3/16 Lube
4	2-3556	BUSHING, Caster
5	2-3747	BUSHING, 1" Machine
6	2-9141	BEARING, Flanged Ball
7	3-5359	TUBE, 5/8" O.D. x 18 Gage Wall x 3.545 Long
8	4-6620	YOKE, Caster (Weldment)
9	4-7138	ARM, Telescoping Caster (Weldment)
10	5-3980	ASSEMBLY, Wheel
11	9-0839	NUT, 7/16-14 Hex Head Cap
12	9-1772	SCREW, 7/16-14 x 6" Hex Head Cap
13	9-1821	SCREW, 1/2-13 x 3" Hex Head Cap (2)
14	9-1922	NUT, 1/2-13 Light Nyloc (2)

FIXED IDLER GROUP

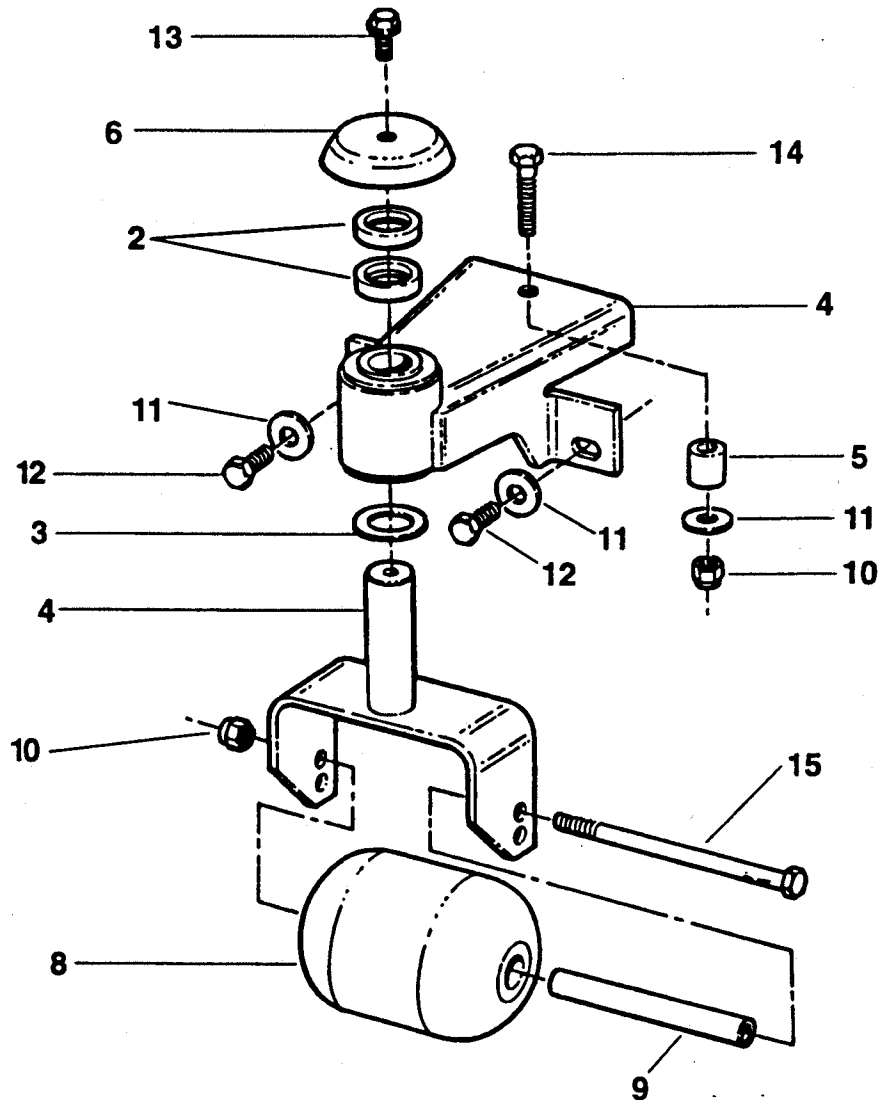
1 - COMPLETE ASSEMBLY



ITEM	PART NO.	DESCRIPTION
1	5-4355	ASSEMBLY, Fixed Idler Group
2	3-5789	PULLEY, Idler, 5 1/2" O.D.
3	3-6449	STAND, Fixed Idler
4	9-1299	NUT, 3/8-16 Hex Nyloc (4)
5	9-1300	WASHER, .44 x 1.0 x .08" Flat
6	9-1305	SCREW, 3/8-16 x 2" Hex Head Cap
7	9-1640	BOLT, 3/8-616 x 1" Round Head Square Neck (3)

ROLLER ASSEMBLY

1 - COMPLETE ASSEMBLY

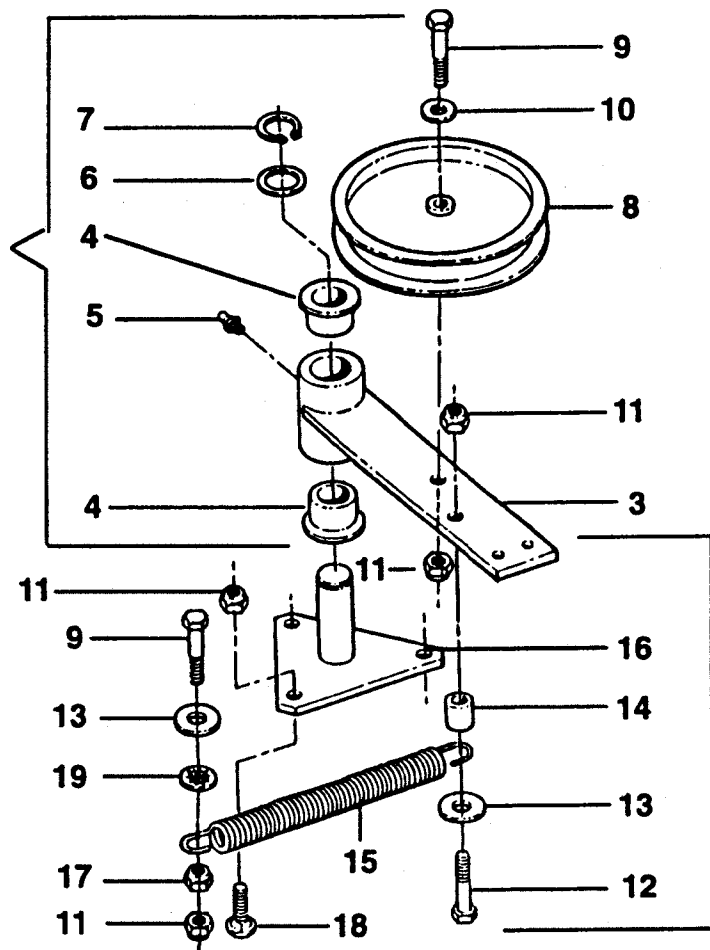


ITEM	PART NO.	DESCRIPTION
1	5-4695	ASSEMBLY, Roller (2) (Includes items 2 thru 15)
2	2-1960	SPACER, 1" x 1 3/8 x .30" (PM) (2)
3	2-3747	BUSHING, 1" Machine
4	4-4646	CASTER, Gage Wheel (Weldment)
5	4-4752	SPACER, 3/8 x .75"
6	4-4839	CAP, Caster Shaft
7	5-4702	ASSEMBLY, Gage Wheel Caster (Weldment)
8	7-9868	ROLLER, 3 3/4 x 4 13/16" Nylon
9	7-9882	TUBE, Axle
10	9-1299	NUT, 3/8-16 Hex Nyloc (2)
11	9-1300	WASHER, .44 x 1.0 x .08" Flat (3)
12	9-1304	SCREW, 3/8-16 x 1" Hex Head Cap (2)
13	9-1541	SCREW, 5/16-18 x 3/4" Hex Washer Head, Self-Tapping
14	9-1553	SCREW, 3/8-16 x 1 3/4" Hex Head Cap
15	9-1617	SCREW, 3/8-16 x 6" Hex Head Cap

SPRING - LOADED IDLER GROUP

1 - COMPLETE ASSEMBLY

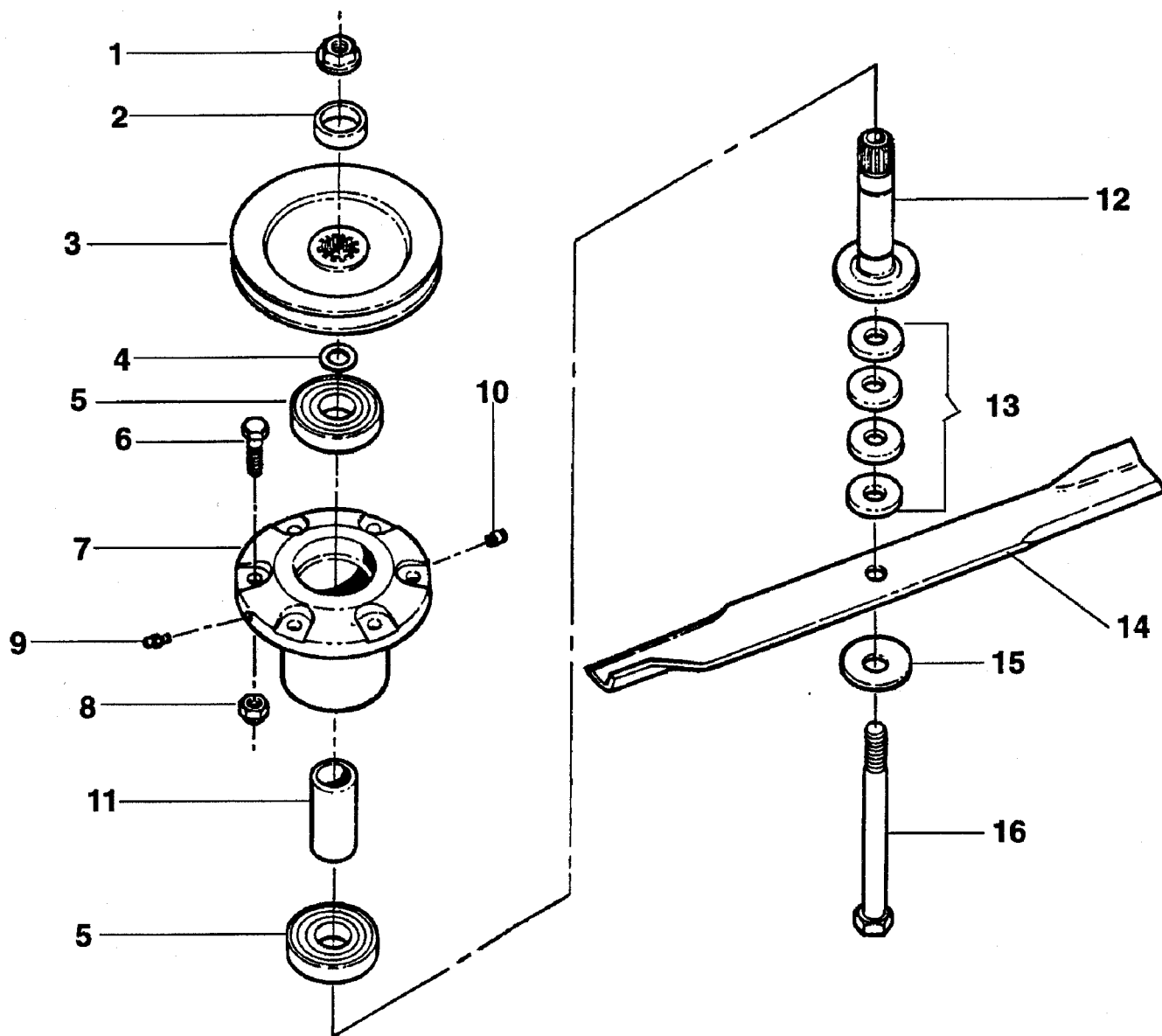
IDLER ARM ASSEMBLY



2 - IDLER ARM ASSEMBLY

ITEM	PART NO.	DESCRIPTION
1	5-4356	ASSEMBLY, Spring-Loaded Idler Group (Includes items 1 thru 18)
2	5-4248	ASSEMBLY, Idler Arm (Includes items 3 thru 14)
3	4-2619	ARM, Idler (Weldment)
4	2-3556	BUSHING (2)
5	7-6998	FITTING, 1/4-28 Straight
6	3-2031	WASHER, 1.031 x 1.25 x .03" Flat
7	1-2709	E-RING, 1"
8	3-5789	PULLEY, 5 1/2" O.D.
9	9-1305	SCREW, 3/8-16 x 2" Hex Head Cap, Grade 5 (2)
10	9-1300	WASHER, 3/8" Flat
11	9-1299	NUT, 3/8-16 Hex Nyloc (6)
12	9-1553	SCREW, 3/8-16 x 1 3/4" Hex Head Cap, Grade 5
13	9-1331	WASHER, .406 x 1.5 x .120" (YZ) (2)
14	3-5858	SPACER, .50 I.D. x .75 O.D. x .83"
15	3-5667	SPRING, Extension
16	4-1295	PIVOT, Idler (Weldment)
17	9-1619	NUT, 3/8-16 Hex Flange Lock
18	9-1640	BOLT, 3/8-16 x 1" Carriage (3)
19	1-3847	RETAINER, 3/8" Bolt

SPINDLE GROUP



ITEM	PART NO.	DESCRIPTION
1	9-1736	NUT, 5/8-18 Hex Flange Lock, Grade 5
2	2-9270	WASHER, Spindle
3	2-9249	PULLEY, 5 3/4" O.D.
4	2-9274	SNAP-RING, Spindle Shaft
5	2-9422	BEARING, Sealed (2)
6	2-9302	BOLT, 3/8-16 x 1 1/4" Rib Necked (6)
7	2-9252	HOUSING, Cutter
8	9-1299	NUT, 3/8-16 Hex Nyloc (6)
9	2-9275	FITTING, Lube
10	2-9384	VENT, Spindle
11	2-9254	SPACER, Bearing
12	2-9253	SHAFT, Spindle
13	2-9271	SPACER, Blade (4)
14	4-6625	BLADE, 25 Inch
15	1-6440	WASHER, Beveled
16	2-9256	BOLT, 5/8-18 x 7 1/2" Hex Head Cap, Grade 5

Parts Manual For

SNAPPER[®]

73" MOWER DECK ASSEMBLY
for OUT FRONT Z-RIDER

SNAPPER McDonough, GA., 30253 U.S.A.

COPYRIGHT © 1998
SNAPPER INC.
ALL RIGHTS RESERVED

MANUAL NO. 06125 (I.R. 10/6/98)