



USB ADSL Modem

ADU-2000

User's Manual

Copyright

Copyright (C) 2002 PLANET Technology Corp. All rights reserved.

The products and programs described in this User's Manual are licensed products of PLANET Technology. This User's Manual contains proprietary information protected by copyright, and this User's Manual and all accompanying hardware, software, and documentation are copyrighted.

No part of this User's Manual may be copied, photocopied, reproduced, translated, or reduced to any electronic medium or machine-readable form by any means by electronic or mechanical. Including photocopying, recording, or information storage and retrieval systems, for any purpose other than the purchaser's personal use, and without the prior express written permission of PLANET Technology.

Disclaimer

PLANET Technology does not warrant that the hardware will work properly in all environments and applications, and makes no warranty and representation, either implied or expressed, with respect to the quality, performance, merchantability, or fitness for a particular purpose.

PLANET has made every effort to ensure that this User's Manual is accurate; PLANET disclaims liability for any inaccuracies or omissions that may have occurred.

Information in this User's Manual is subject to change without notice and does not represent a commitment on the part of PLANET. PLANET assumes no responsibility for any inaccuracies that may be contained in this User's Manual. PLANET makes no commitment to update or keep current the information in this User's Manual, and reserves the right to make improvements to this User's Manual and/or to the products described in this User's Manual, at any time without notice.

If you find information in this manual that is incorrect, misleading, or incomplete, we would appreciate your comments and suggestions.

FCC Compliance Statement

This equipment generates and uses radio frequency energy and if not installed and used properly, that is, in strict accordance with the instructions provided with the equipment, may cause interference to radio and TV communication. The equipment has been tested and found to comply with the limits for a Class A computing device in accordance with the specifications in Subpart B of Part 15 of FCC rules, which are designed to provide reasonable protection against such interference in a residential installation. However, there is no guarantee that interference will not occur in a particular installation. If you suspect this equipment is causing interference, turn your Ethernet Switch on and off while your radio or TV is showing interference, if the interference disappears when you turn your Ethernet Switch off and reappears when you turn it back on, there is interference being caused by the Ethernet Switch.

You can try to correct the interference by one or more of the following measures:

- w Reorient the receiving radio or TV antenna where this may be done safely.
- w To the extent possible, relocate the radio, TV or other receiver away from the Switch.
- w Plug the Ethernet Switch into a different power outlet so that the Switch and the receiver are on different branch circuits.

If necessary, you should consult the place of purchase or an experienced radio/television technician for additional suggestions.

CE mark Warning

The is a class B device, In a domestic environment, this product may cause radio interference, in which case the user may be required to take adequate measures.

Trademarks

The PLANET logo is a trademark of PLANET Technology. This documentation may refer to numerous hardware and software products by their trade names. In most, if not all cases, these designations are claimed as trademarks or registered trademarks by their respective companies.

Revision

User's Manual for PLANET USB ADSL Modem

Model: ADU-2000

Rev: 1.0 (Oct. 2002)

Part No.: EM-ADU2000V1.doc

TABLE OF CONTENTS

CHAPTER 1 INTRODUCTION	1
FEATURES.....	1
DATA REQUIREMENT	1
<i>ADSL LAN mode user</i>	<i>1</i>
<i>ADSL WAN (PPPoE/PPPoA) mode user</i>	<i>1</i>
SYSTEM REQUIREMENT	2
CHAPTER 2 INSTALLATION	3
HARDWARE INSTALLATION.....	3
DRIVER INSTALLATION FOR BOTH LAN AND WAN MODE WITH WIN 98.....	3
DRIVER INSTALLATION FOR BOTH LAN AND WAN MODE WITH WIN ME.....	6
DRIVER INSTALLATION FOR BOTH LAN AND WAN MODE WITH WIN 2000.....	7
DRIVER INSTALLATION FOR BOTH LAN AND WAN MODE WITH WIN XP	10
CHAPTER 3 ADSL CONFIGURATION	15
ADSL LAN CONFIGURATION	15
ADSL WAN CONFIGURATION	18

Chapter 1

Introduction

PLANET USB ADSL modem ADU-2000 is designed to provide cost-effective access to high-speed ADSL services. With our ADSL modem, surfing on Internet is just like driving a sport car on the Express Highway. Video on Demand, Videoconference and any high-speed Internet applications is not a dream any more. But a reality!

Features

- I USB bus-powered; an external power supply is not required
- I ANSI T1.413 issue 2, ITU G.dmt(G.992.1), and ITU G.lite(G.992.2) compliant
- I Software upgradeable
- I WAN mode support:
 - I PPP over ATM LLC SNAP/VCMUX (RFC 2364)
 - I PPP over Ethernet LLC SNAP/VCMUX (RFC 2516)
- I LAN mode support:
 - I Classical IP over ATM (RFC 1577)
 - I Bridged IP over ATM LLC SNAP/VCMUX (RFC 1483)
 - I Routed IP over ATM LLC SNAP/VCMUX (RFC 1483)
- I Supports DSL downstream data rates up to 8 Mbps
- I Supports DSL upstream data rates up to 1 Mbps
- I Compliant with Universal Serial Bus Specification Revision 1.1

Data Requirement

You must get the following data information from your ISP or phone company to set up ADU-2000.

ADSL LAN mode user

- I VPI/VCI value
- I Encapsulation mode (example: RFC 1483, 1577...etc.)
- I IP Address, Subnet Mask
- I Gateway, DNS related information

ADSL WAN (PPPoE/PPPoA) mode user

- I VPI/VCI value
- I Encapsulation mode (example: RFC 2364, 2516...etc.)
- I Username and password for authentication

System Requirement

- I Mainboard with USB support
- I Pentium II CPU and above or compatible
- I RAM: 64M or above
- I Windows 98, Windows 2000, Windows ME, Windows XP

Chapter 2 Installation

2

Please refer to the following steps to complete ADU-2000 installation.

Hardware Installation

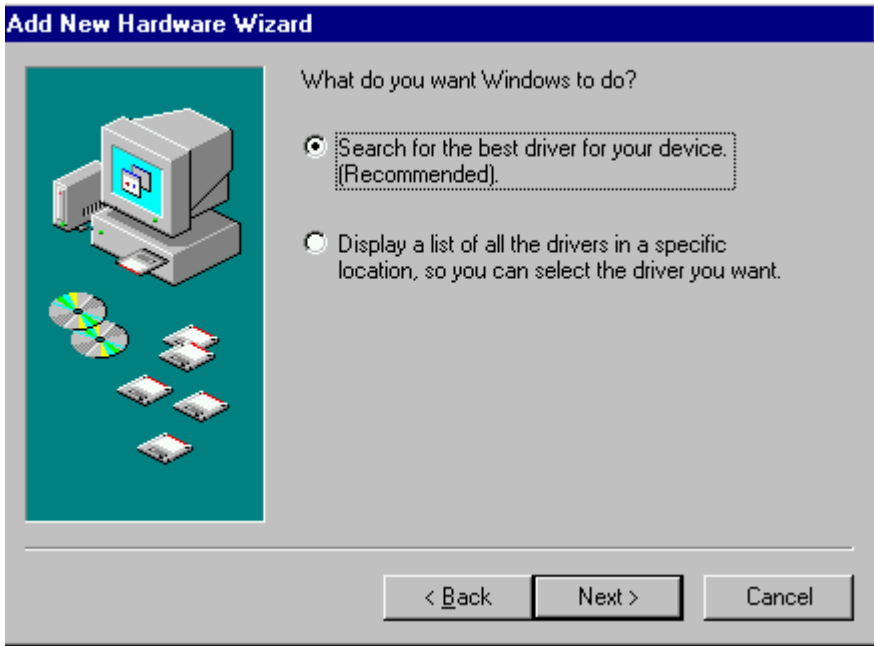
1. Turn on your PC
2. Insert the rectangular end of a USB cable into the USB port of your PC. Then, insert the square end of the USB cable into the USB port of the ADU 2000.
3. PC will automatically detect this router as “USB Net Card”.
4. Insert bundled USB driver CD into the proper drive and follow instruction to install ADU 2000.
5. The “Add New Hardware Wizard” will be displayed. Insert the driver CD and click **Next**.
6. Choose the “Search for the best driver for your device (Recommended)” and click **Next**.
7. Select the “CD-ROM drive”, and “Specify a location” and click **Browse**. Then, specify the path which ADSL modem connected your computer to Internet, then click **OK**.

Driver Installation for both LAN and WAN mode with Win 98

1. The “Add New Hardware Wizard” will be displayed. Click **Next**.



2. Choose the “Automatic search for a better Driver (Recommended)” and click **Next**.



3. Choose CD-ROM drive and Specify a location. Then click **Next**.



4. Click **Next**.



5. Click **Finish** to complete the installation.

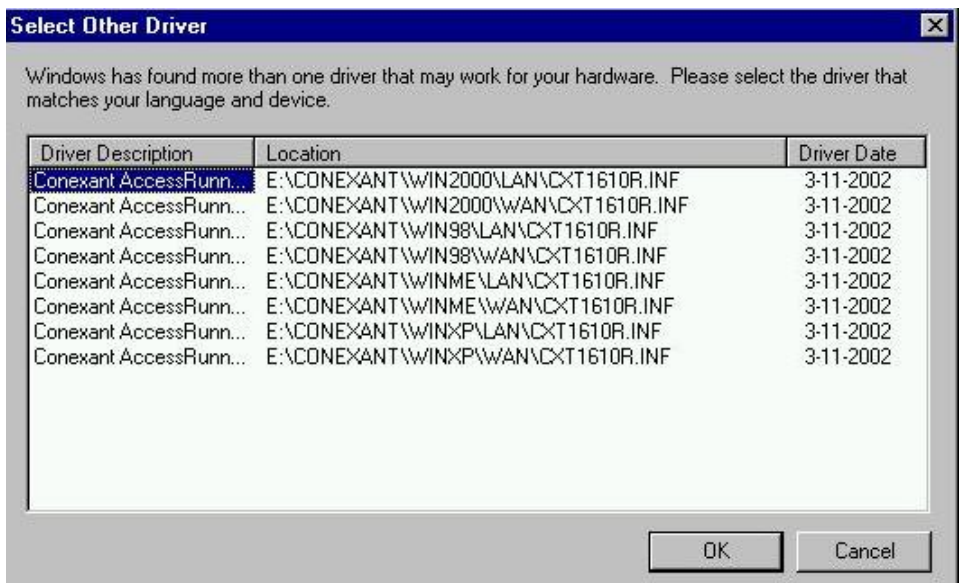


Driver Installation for both LAN and WAN mode with Win ME

1. The "Found New Hardware Wizard" will be displayed. Insert ADU-2000 driver CD and click **Next**.



2. Please specify the path which ADSL modem connected your computer to Internet, then click **OK**.



3. Click **Finish** to complete ADU-2000 driver installation.



Driver Installation for both LAN and WAN mode with Win 2000

1. The “Add New Hardware Wizard” will be displayed and click **Next**.

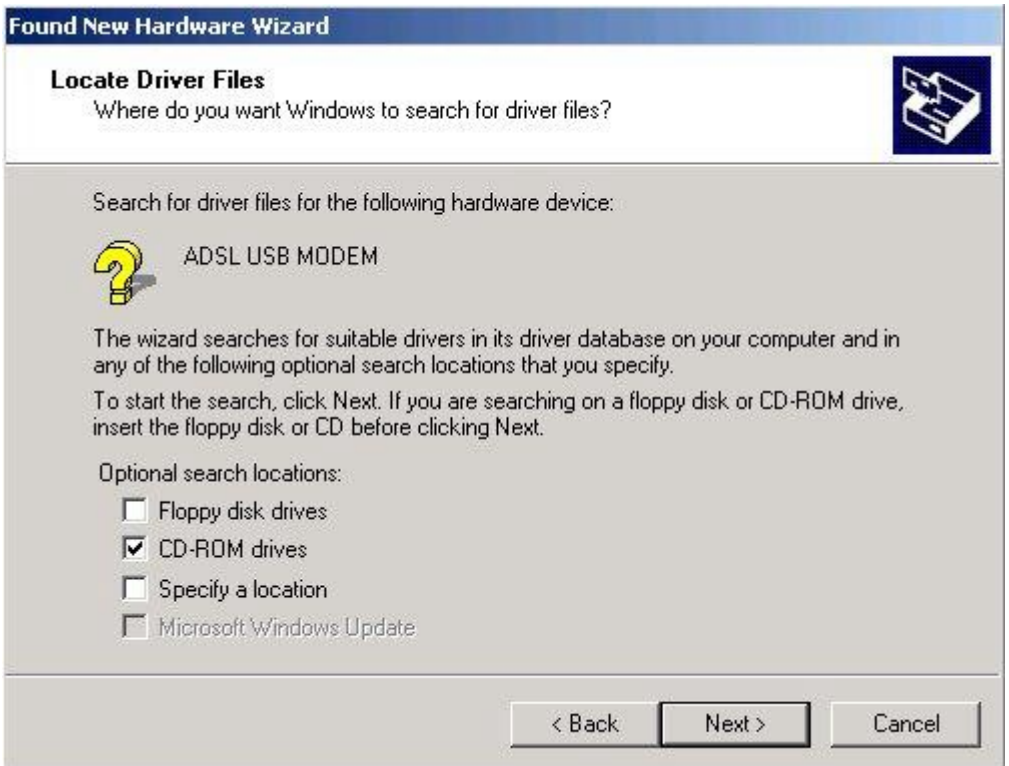


2. Choose the “Search for a suitable driver for my device (recommended)”, and

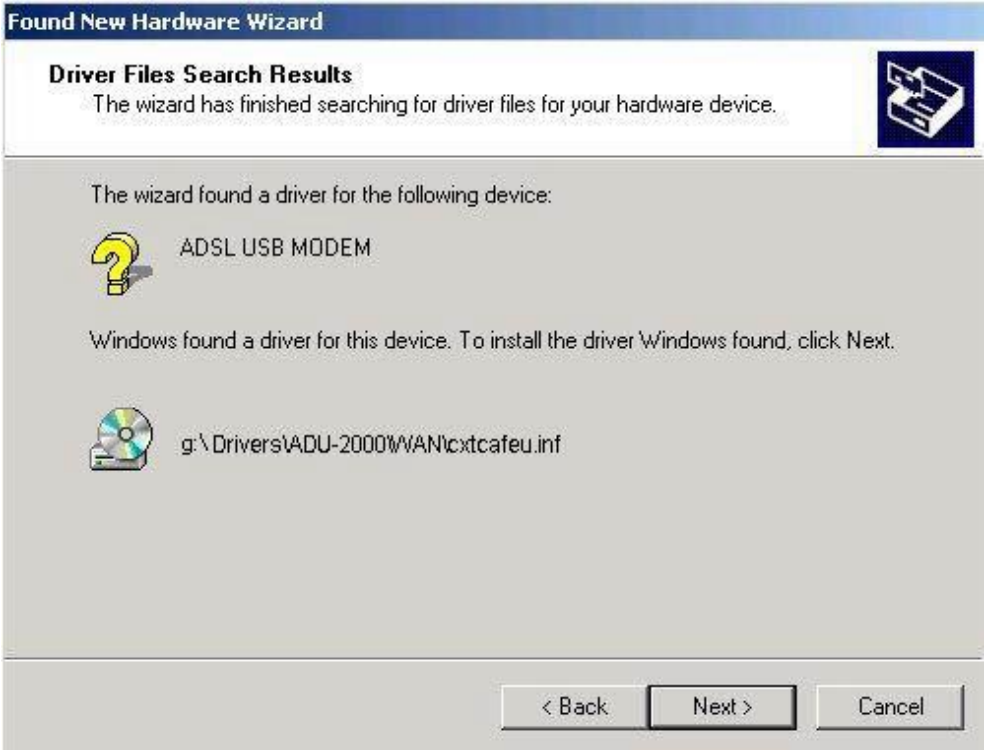
click **Next**.



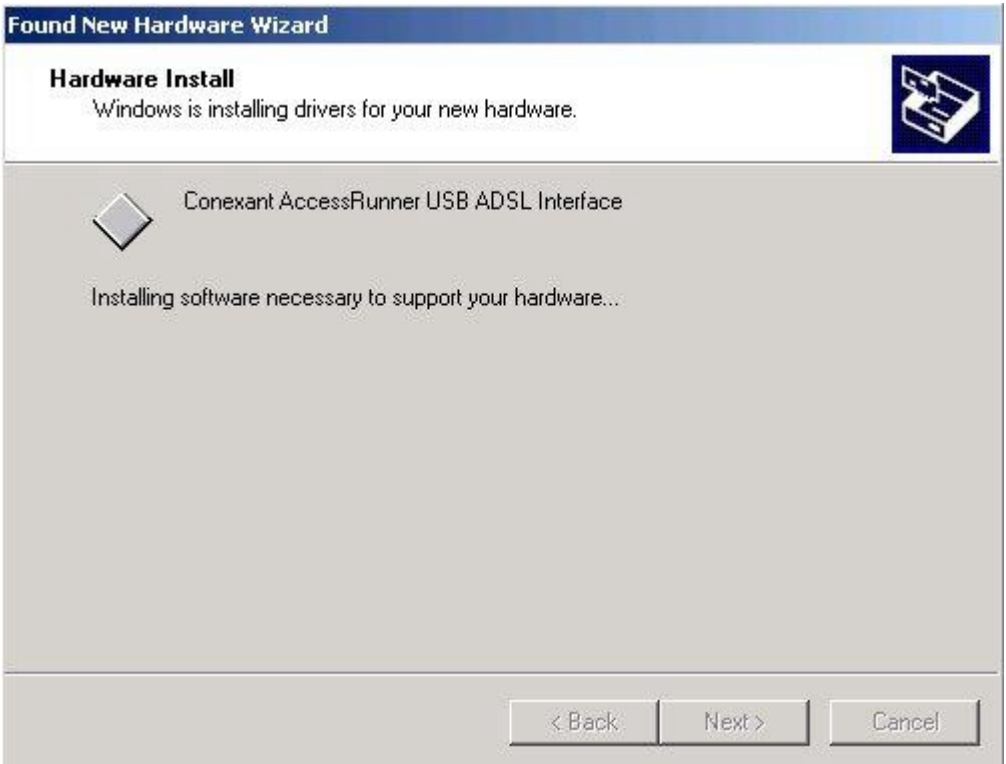
3. Select the "CD-ROM drives", and then click **Next**. (Make sure you have inserted the driver CD into the CDROM drive.)



4. Windows will find a driver for this device. Then click **Next**.



5. Windows is installing drivers for your new hardware.



6. The "Digital Signature Not Found" window will pop-up, Click Yes.



7. Click **Finish** to complete the installation.

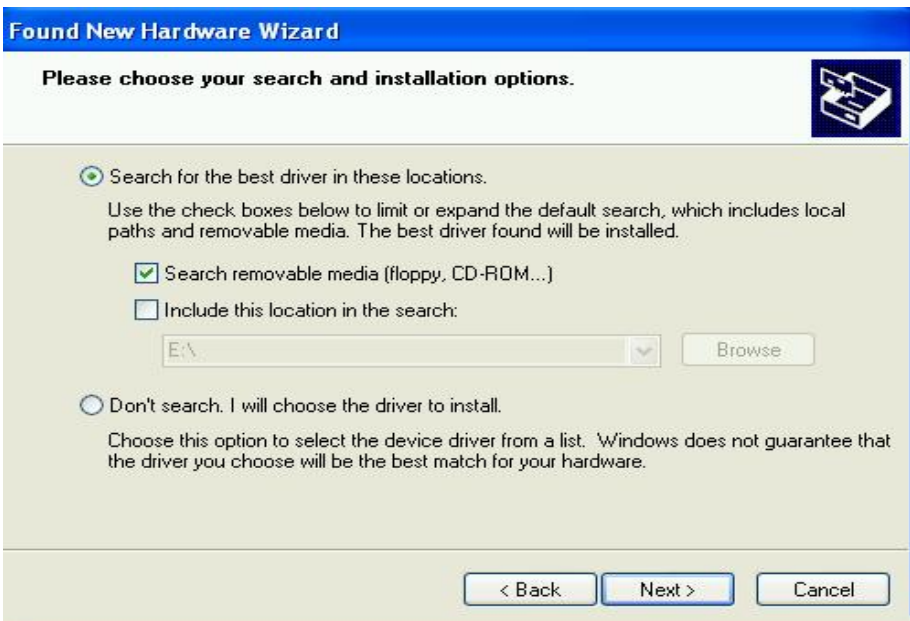


Driver Installation for both LAN and WAN mode with Win XP

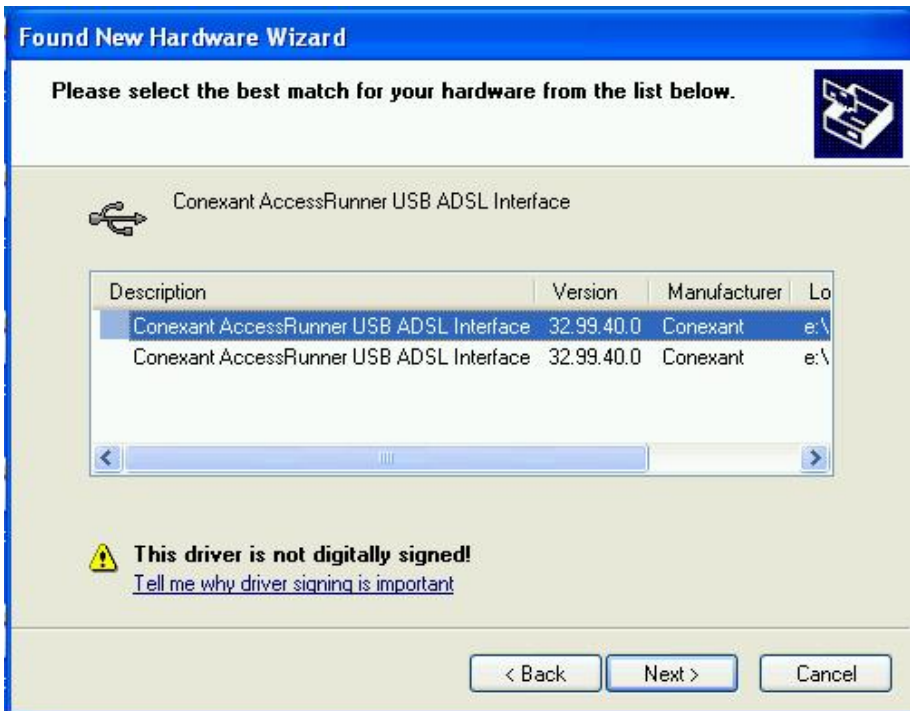
1. The "Add New Hardware Wizard" will be displayed. Choose **Install from a list or specific location (Advanced)** and click **Next**.



2. Choose the “Search for the best driver in these locations”, and “**Search removable media (floppy, CD_ROM...)**”, then click **Next**.



3. “Conexant AccessRunner USB ADSL Interface” will be displayed and click **Next**.



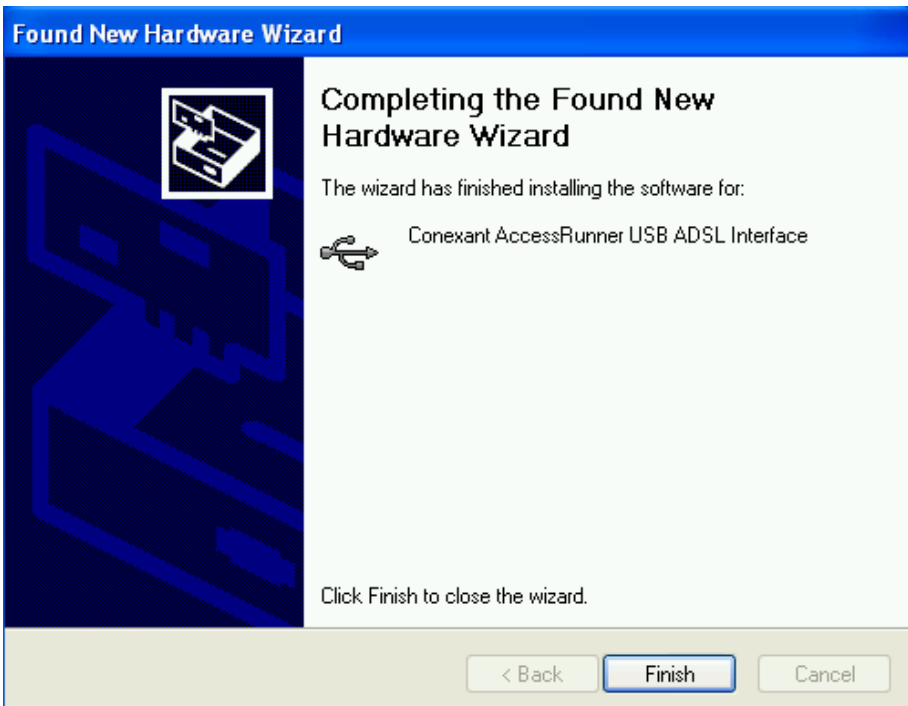
- Under Hardware Installation window. Click “Continue Anyway”.



- Under Software Installation window. Click “Continue Anyway”



5. Completing the Found New Hardware Wizard. Click **Finish**.



Chapter 3

ADSL Configuration

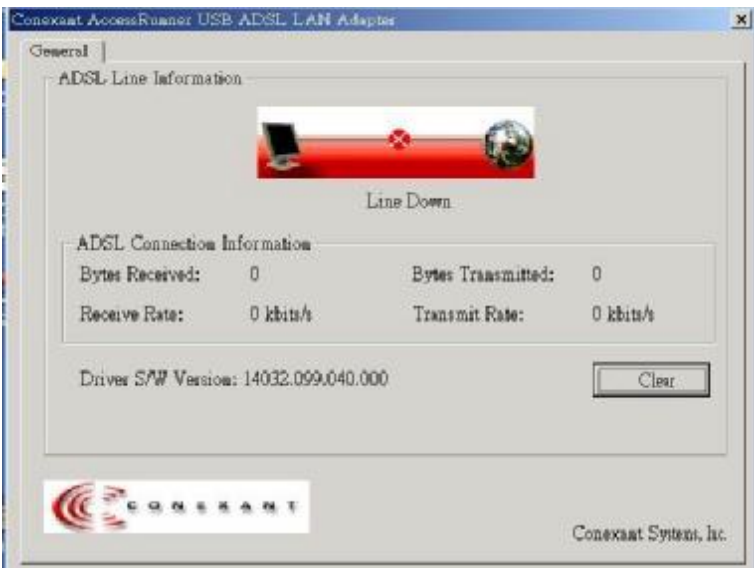
3

ADSL LAN Configuration

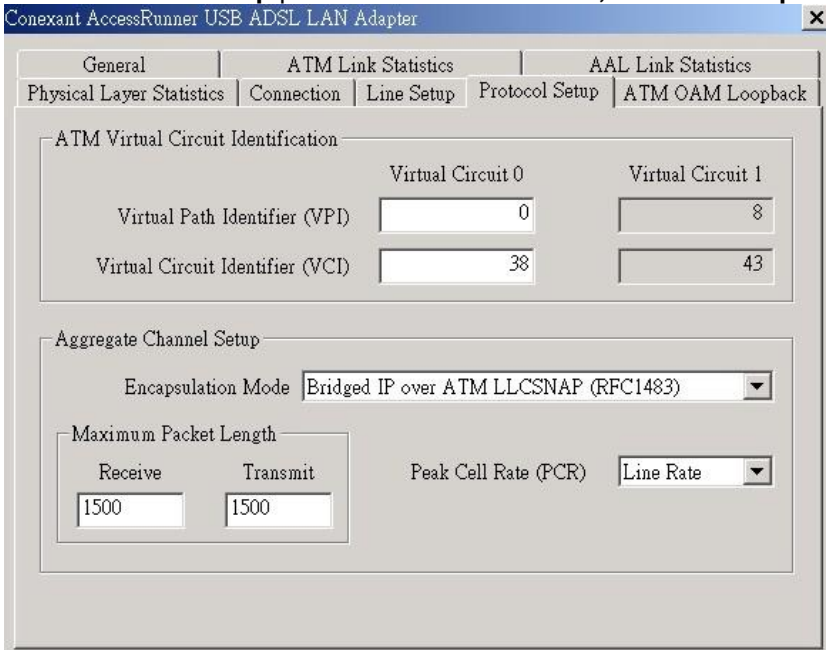
1. **Conexant Access Runner ADSL** icon should be added in the control panel or on the desktop.



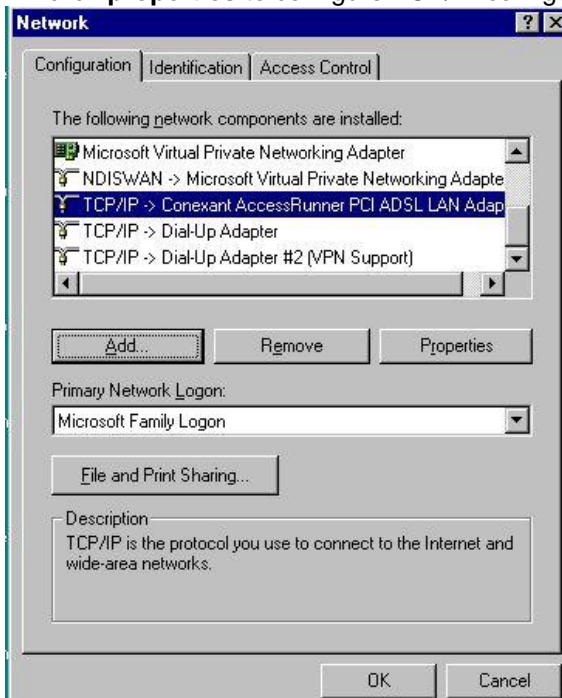
2. Click the **Conexant Access Runner ADSL** icon, it will be displayed the status of the modem.



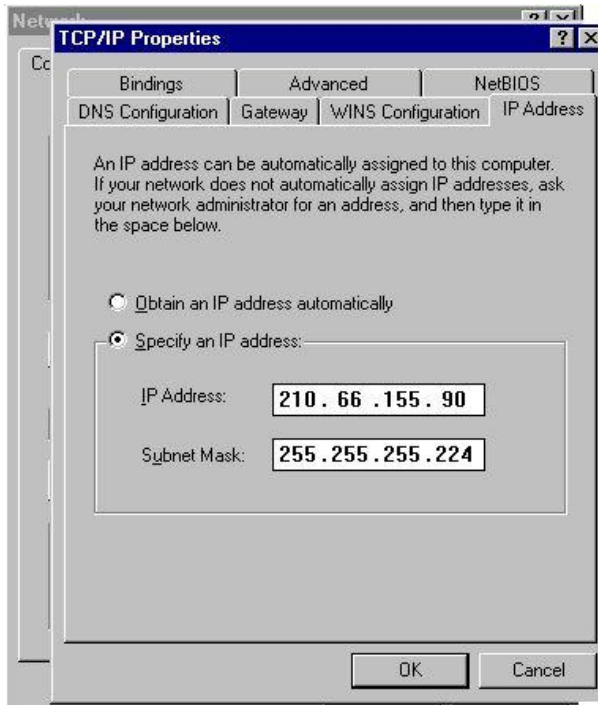
- Press **Alt + P** on the keyboard, the right figure appears.
- Under the **Protocol Setup** please set the value of **VCI**, **VPI** and **Encapsulation**.



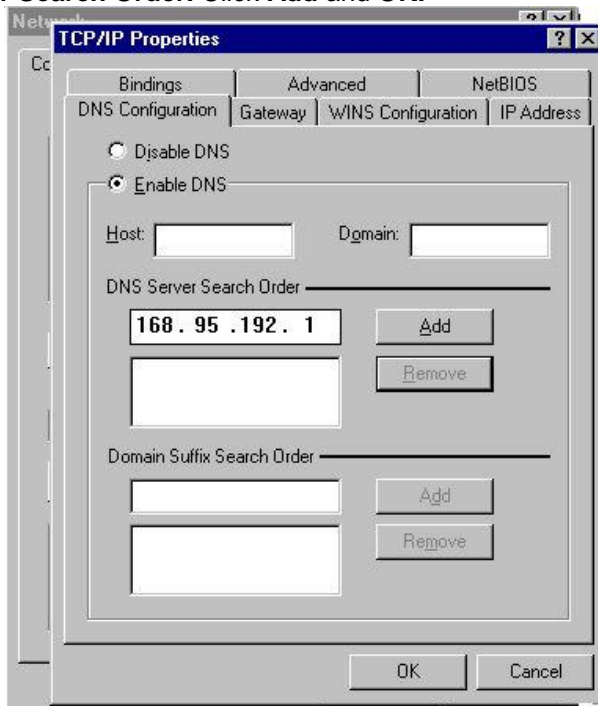
- Click My Computer on the **desktop** \ **Control Panel** \ **Network** \ **Configuration** -> select **TCP/IP** -> click **properties** to configure TCP/IP configuration.



- IP Address** setting: select **Specify an address**, then enter the value of **IP Address** and **Subnet Mask** obtained from ISP.



6. **Gateway** setting: enter the data from your ISP and click **Add**.
7. **DNS Configuration** setting: Select **Enable DNS**, enter **Host** name and add **DNS Server Search Order**. Click **Add** and **OK**.



9. Reboot computer to activate the modifications if necessary.

NOTE: TCP/IP configuration listed above is a sample for ADU-2000 installation on Windows 98 machine. It is strongly recommended to refer

user's manual or consult network administrator to ensure correctness of TCP/IP configuration. Meanwhile, parameters of TCP/IP configuration shall be depended on your ISP; please consult with your service provider about the configuration.

ADSL WAN configuration

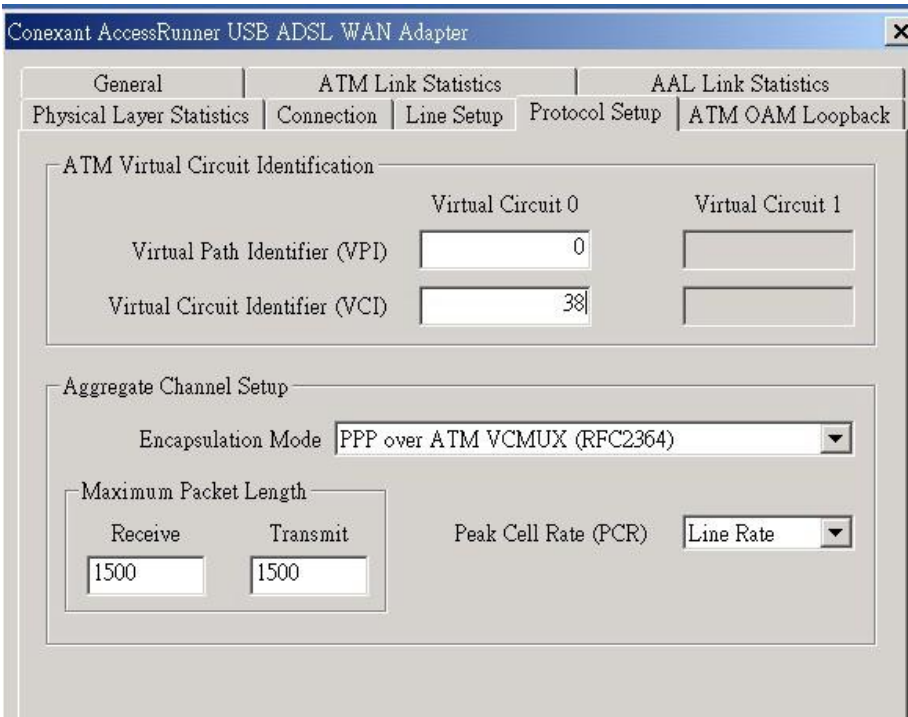
1. After driver installation, **Conexant Access Runner ADSL** and **AccessRunner DSL** icon should be added in the control panel and on the desktop.



2. Click the **Conexant Access Runner ADSL** icon, it will be displayed the status of the modem.



3. Press **Alt + P** on the keyboard, the control panel appears.
4. Under the **Protocol Setup** please set the value of **VCI**, **VPI** and **Encapsulation**, then click **OK**.



5. Click the **Access Runner DSL** icon on the **desktop** -> enter **User name**, **Password** and **Phone number (don't care; recommend "0000")** from your ISP.
6. Click **Connect**. Now, you can surfer the Internet.



NOTE: TCP/IP configuration listed above is a sample for ADU-2000 installation on Windows 2000 machine. It is strongly recommended to refer user's manual of operation system or consult network administrator to ensure correctness of TCP/IP configuration. Meanwhile, parameters of TCP/IP configuration shall be depended on your ISP; please consult with your service provider about the configuration.