

FM/AM CD Clock Radio

Operating Instructions

ICF-CD3iP

Owner's Record

The model number and the serial number are located on the bottom.

Record the serial number in the space provided below. Refer to them whenever you call upon your Sony dealer regarding this product.

Model No. ICF-CD3iP

Serial No. _____

For customers who purchased this product in the USA Please register this product on line at <http://www.sony.com/productregistration>. Proper registration will enable us to send you periodic mailings about new products, services, and other important announcements. Registering your product will also allow us to contact you in the unlikely event that the product needs adjustment or modification. Thank you.

WARNING

To reduce the risk of fire or electric shock, do not expose this apparatus to rain or moisture.

To reduce the risk of fire, do not cover the ventilation opening of the apparatus with newspapers, tablecloths, curtains, etc. Do not place the naked flame sources such as lighted candles on the apparatus.

To reduce the risk of fire or electric shock, do not expose this apparatus to dripping or splashing, and do not place objects filled with liquids, such as vases, on the apparatus.

Do not install the appliance in a confined space, such as a bookcase or built-in cabinet.

Do not expose the batteries (battery pack or batteries installed) to excessive heat such as sunshine, fire or the like for a long time.

As the main plug is used to disconnect the unit from the mains, connect the unit to an easily accessible AC outlet. Should you notice an abnormality in the unit, disconnect the main plug from the AC outlet immediately.

You are cautioned that any changes or modifications not expressly approved in this manual could void your authority to operate this equipment.



CAUTION

- The use of optical instruments with this product will increase eye hazard.
- Danger of explosion if battery is incorrectly replaced. Replace only with the same or equivalent type.



CAUTION
RISK OF ELECTRIC SHOCK
DO NOT OPEN



This symbol is intended to alert the user to the presence of uninsulated "dangerous voltage" within the product's enclosure that may be of sufficient magnitude to constitute a risk of electric shock to persons.



This symbol is intended to alert the user to the presence of important operating and maintenance (servicing) instructions in the literature accompanying the appliance.

CLASS1M INVISIBLE LASER RADIATION WHEN OPEN DO NOT VIEW DIRECTLY WITH OPTICAL INSTRUMENTS.

Use of controls or adjustments or performance of procedures other than those specified herein may result in hazardous radiation exposure.

INFORMATION

This equipment has been tested and found to comply with the limits for a Class B digital device, pursuant to Part 15 of the FCC Rules. These limits are designed to provide reasonable protection against harmful interference in a residential installation. This equipment generates, uses and can radiate radio frequency energy and, if not installed and used in accordance with the instructions, may cause harmful interference to radio communications. However, there is no guarantee that interference will not occur in a particular installation. If this equipment does cause harmful interference to radio or television reception, which can be determined by turning the equipment off and on, the user is encouraged to try to correct the interference by one or more of the following measures:

- Reorient or relocate the receiving antenna.
- Increase the separation between the equipment and receiver.
- Connect the equipment into an outlet on a circuit different from that to which the receiver is connected.

— Consult the dealer or an experienced radio/TV technician for help.

WARNING

- Replace the battery for the clock backup with a Sony CR2032 lithium battery, and the battery for the remote commander with a Sony CR2025 lithium battery. Use of another battery may present a risk of fire or explosion.
- Battery may explode if mistreated. Do not recharge, disassemble or dispose of in fire.
- Do not expose the battery to excessive heat such as direct sunlight, fire or the like.
- Dispose of used battery promptly. Keep away from children.

Important Safety Instructions

- Read these instructions.
- Keep these instructions.
- Heed all warnings.
- Follow all instructions.
- Do not use this apparatus near water.
- Clean only with dry cloth.
- Do not block any ventilation openings. Install in accordance with the manufacturer's instructions.
- Do not install near any heat sources such as radiators, heat registers, stoves, or other apparatus (including amplifiers) that produce heat.
- Do not defeat the safety purpose of the polarized or grounding-type plug. A polarized plug has two blades with one wider than the other. A grounding type plug has two blades and a third grounding prong. The wide blade or the third prong are provided for your safety. If the provided plug does not fit into your outlet, consult an electrician for replacement of the obsolete outlet.
- Protect the power cord from being walked on or pinched particularly at plugs, convenience receptacles, and the point where they exit from the apparatus.
- Only use attachments/accessories specified by the manufacturer.
- Use only with the cart, stand, tripod, bracket, or table specified by the manufacturer, or sold with the apparatus. When a cart is used, use caution when moving the cart/apparatus combination to avoid injury from tip-over.



- Unplug this apparatus during lightning storms or when unused for long periods of time.
- Refer all servicing to qualified service personnel. Servicing is required when the apparatus has been damaged in any way, such as power-supply cord or plug is damaged, liquid has been spilled or objects have fallen into the apparatus, the apparatus has been exposed to rain or moisture, does not operate normally, or has been dropped.

For the state of california, USA only
Perchlorate Material –special handling may apply, See www.dtsc.ca.gov/hazardouswaste/perchlorate
Perchlorate Material: Lithium battery contains perchlorate

Features

- Brightness control (High/Mid/Low)
- Supplied audio cable for digital music players
- Built-in CD player with CD-R/RW playback function
- FM/AM 2-band digital tuner
- 30 Station Presets (20 FM, 10 AM)
- Automatic Time/Daylight Saving Time Setting
- No Power No Problem alarm system to keep the clock and the alarm operating during a power interruption with a CR2032 battery installed
- Extendable Snooze time from 10 to 60 min

Precautions

- Play the unit on the power source specified in "Specifications".
- To disconnect the AC power cord (mains lead), pull it out by the plug, not the cord.
- The unit is not disconnected from the AC power source (mains) as long as it is connected to the wall outlet, even if the player itself has been turned off.
- The nameplate and important information concerning safety are located on the bottom exterior.
- Since a strong magnet is used for the speaker, keep personal credit cards using magnetic coding or spring-wound watches away from the unit to prevent possible damage from the magnet.

Section for iPod

DC out: 5V
MAX: 500mA (AC only)

Radio section

Band	Frequency	Channel step
FM	87.5 – 108 MHz	0.1 MHz
AM	530 – 1 710 kHz	10 kHz

General

Speaker
Approx. 3.8 cm (1 1/2 inches) dia. 20 Ω

Input
AUDIO IN jack (ø 3.5 mm stereo minijack)

Power output
1 W + 1 W (at 10% harmonic distortion)

Power requirements
120 V AC, 60 Hz
For clock back up: 3V DC, one CR2032 battery

Dimensions
Approx. 145 × 156.8 × 115.8 mm (w/h/d)
(5 3/4 × 6 1/4 × 4 5/8 inches) not including projecting parts and controls

Mass
Approx. 1.3 kg (2 lb 13 oz) including power supply unit

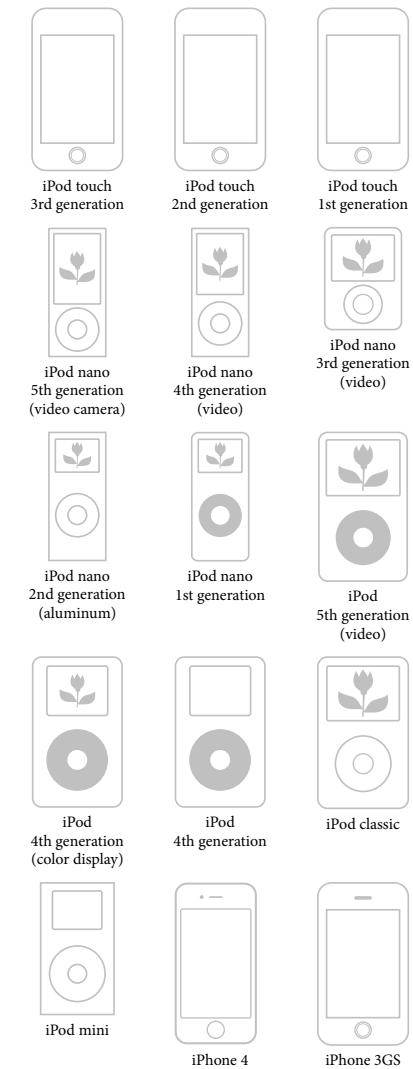
Supplied accessories

- Remote commander (1)
- AM loop antenna (1)
- Audio connecting cable (1)
- Universal Dock Adapter for iPhone (1)
- Universal Dock Adapter for iPhone 3G & iPhone 3GS (1)
- Universal Dock Adapter for iPhone 4 (1)

Design and specifications are subject to change without notice.

Compatible iPod/iPhone models

Compatible iPod/iPhone* models are as follows. Update your iPod/iPhone to use the latest software before you use it.



CD player section

System
Compact disc digital audio system

Laser diode properties

Emission duration: Continuous
Laser output: Less than 44.6 μW (This output is the value measurement at a distance of 200 mm from the objective lens surface on the optical pick-up block with 7 mm aperture.)

Number of channels

Frequency response
20 - 20 000 Hz +1/-2 dB

Wow and flutter
Below measurable limit

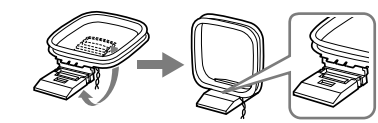
- The connector of the unit is for sole use for iPod. When you use devices that do not match with the connector, connect to the **AUDIO IN** terminal of this unit with the supplied audio connecting cable.
- Sony cannot accept responsibility in the event that data recorded to iPod is lost or damaged when using an iPod connected to this unit.

Connecting the antenna

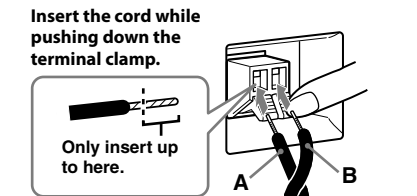
To connect the AM loop antenna

The shape and the length of the antenna is designed to receive AM signals. Do not dismantle or roll up the antenna.

- Remove only the loop part from the plastic stand.
- Set up the AM loop antenna.



- Connect the cords to the AM antenna terminals. Cord (A) or cord (B) can be connected to either terminal.



- Make sure the AM loop antenna is connected firmly by pulling softly.

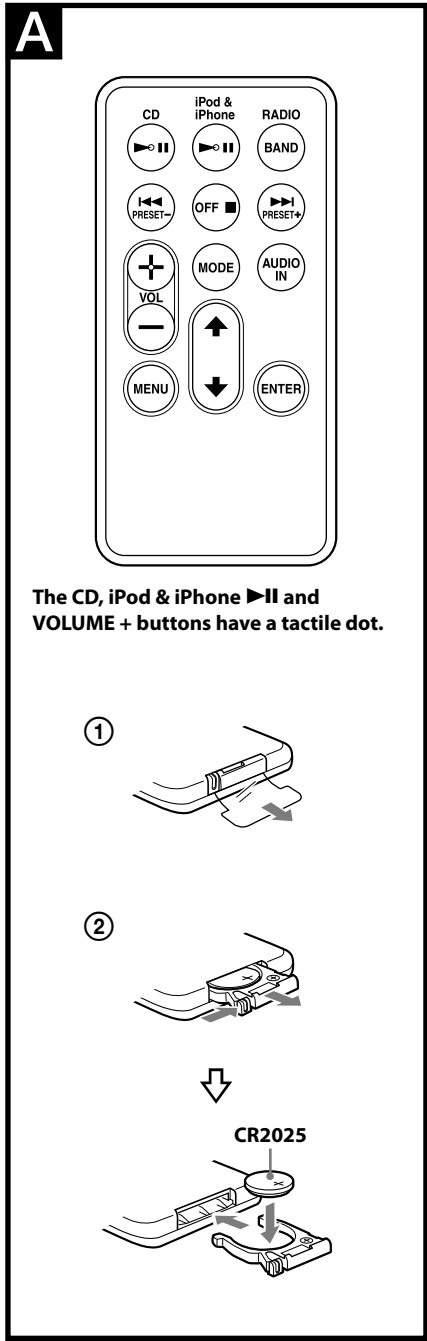
Adjusting the AM loop antenna

Find a place and an orientation that provide good reception.

- Do not place the AM loop antenna near the unit or other AV equipment, as noise may result.

Tip

Adjust the direction of the AM loop antenna for best AM broadcast sound.



Preparing the remote commander

Before using the card remote commander for the first time, remove the insulation film. (See Fig. **A**-①)

When to replace the battery

With normal use, the battery (CR2025) should last for about six months. When the remote commander no longer operates the unit, replace the battery with a new one. (See Fig. **A**-②)

Notes

- Do not charge the battery.
- When you are not going to use the remote commander for a long time, remove the battery to avoid any damage caused by leakage and corrosion.

B



If the time in the display is incorrect after the battery is changed (Reset)

Press the Reset button with a pointed device. The Reset button is in the small hole located in the battery compartment.

Note

When you replace the battery, do not disconnect the plug from the AC outlet. Otherwise, the calendar, current time, alarm and station presets will be erased.

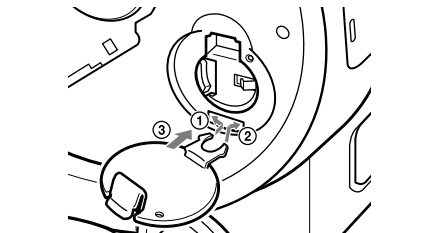
Battery Warning

If the unit is to be left unplugged for a long time, remove the battery to avoid undue battery discharge and damage to the unit from battery leakage.

WARNING

There is a danger of explosion if the battery is incorrectly replaced. Replace only with the same or equivalent type recommended by the equipment manufacturer.

If the battery compartment lid comes off
The battery compartment lid is designed to come off when opened with excessive force. To put it back on, see the illustration.



- Insert the left hook of the lid into the left hole in the unit.
- Insert the right hook into the right hole.
- Confirm the lid is securely attached.

About the backup battery

To keep good time, this unit contains one CR2032 battery inside of the unit as a backup power source. The battery keeps the clock operating in the event of a power interruption.

Knowing when to replace the battery

When the battery becomes weak, "⌚" appears in the display. If a power interruption occurs while the battery is weak, the current time and alarm will be erased. Replace the battery with a Sony CR2032 lithium battery. Use of another battery may cause a fire or explosion.

Note

If "AM 12:00" flashes in the display when the unit is connected to AC outlet for the first time, the battery may be weak. In this case, consult your Sony dealer.

Replacing the battery

- Open the CD compartment lid. (See Fig. **B**-①)
- Keep the AC plug connected to the AC outlet and use a screwdriver to remove the screw that secures the battery holder at the bottom of the unit. (See Fig. **B**-②)
- Push the exhausted battery out from the bottom of the battery holder and insert a new battery with the **+** side facing up. (See Fig. **B**-③)
- Insert the battery holder back into the unit and secure it with the screw. (See Fig. **B**-④)
- Press **CD, iPod&iPhone, RADIO BAND, AUDIO IN or SNOOZE/DATE/SLEEP OFF** to turn "⌚" off in the display.

<http://www.sony.net/>

Portable Audio

LIMITED WARRANTY (U.S. Only)

SONY Electronics Inc. ("Sony") warrants this product against defects in material or workmanship for the time periods and as set forth below when purchased directly from Sony or a Sony Retailer. Pursuant to this Limited Warranty, Sony will, at its option, (i) repair the product using new or refurbished parts or (ii) replace the product with a new or refurbished product. For purposes of this Limited Warranty, "refurbished" means a product or part that has been returned to its original specifications. **In the event of a defect, these are your exclusive remedies.**

Labor: For a period of one (1) year from the original date of purchase of the product ("Labor Warranty"), Sony will, at its option, repair or replace with new or refurbished product, product determined to be defective. If Sony elects to replace the product after this Labor Warranty has expired but while the Parts Warranty below is still in effect, it will do so for the applicable labor charge.

Parts: For a period of one (1) year from the original date of purchase of product ("Parts Warranty"), Sony will supply new or refurbished replacement parts in exchange for parts determined to be defective.

This Limited Warranty covers only the hardware components packaged with the Product. It does not cover technical assistance for hardware or software usage and it does not cover any software products whether or not contained in the Product; any such software is provided "AS IS" unless expressly provided for in any enclosed software Limited Warranty. Please refer to the End User License Agreements included with the Product for your rights and obligations with respect to the software.

Instructions: To obtain warranty service, you must deliver the product, freight prepaid, in either its original packaging or packaging affording an equal degree of protection to the Sony authorized service facility specified. **It is your responsibility to backup any data, software or other materials you may have stored or preserved on your unit. It is likely that such data, software, or other materials will be lost or reformatted during service and Sony will not be responsible for any such damage or loss.** A dated purchase receipt from Sony or a Sony Retailer is required. For specific instructions on how to obtain warranty service for your product,

Visit Sony's Web Site:
www.sony.com/support

Or call the **Sony Customer Information Service Center**
1-800-222-SONY (7669)

For an accessory or part not available from your authorized dealer, call:
1-800-488-SONY (7669)

Repair / Replacement Warranty: This Limited Warranty shall apply to any repair, replacement part or replacement product for the remainder of the original Limited Warranty period or for ninety (90) days, whichever is longer. Any parts or product replaced under this Limited Warranty will become the property of Sony.

This Limited Warranty only covers product issues caused by defects in material or workmanship during ordinary consumer use; it does not cover product issues caused by any other reason, including but not limited to product issues due to commercial use, acts of God, misuse, limitations of technology, or modification of or to any part of the Sony product or product purchased from other than Sony or a Sony Retailer. To determine if a retailer is part of the Sony Retailer Network, please contact Sony's Customer Service Call Center or go to www.sony.com/support. This Limited Warranty does not cover Sony products sold AS IS or WITH ALL FAULTS or consumables (such as fuses or batteries). This Limited Warranty is invalid if the factory-applied serial number has been altered or removed from the product. This Limited Warranty is valid only in the United States.

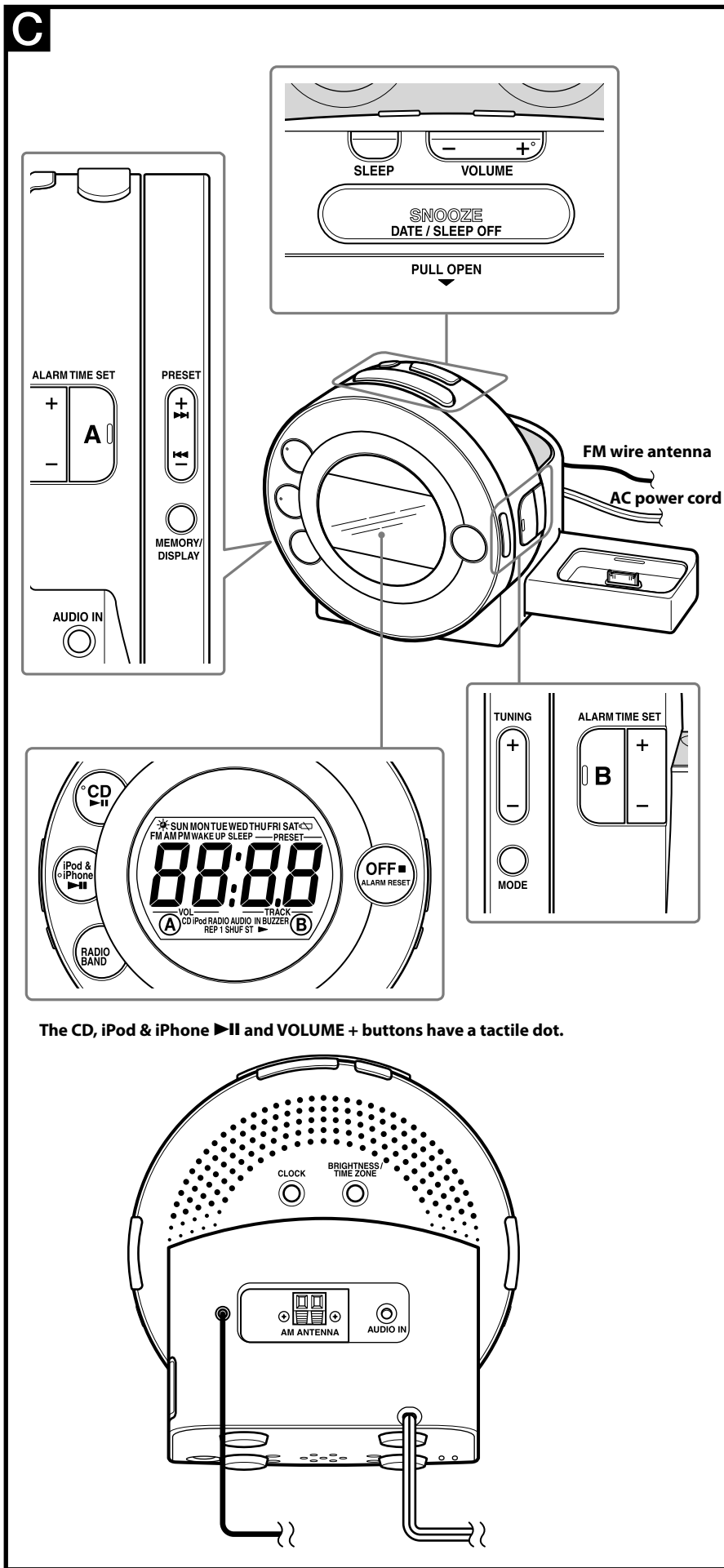
LIMITATION ON DAMAGES: SONY SHALL NOT BE LIABLE FOR ANY INCIDENTAL OR CONSEQUENTIAL DAMAGES FOR BREACH OF ANY EXPRESS OR IMPLIED WARRANTY ON THIS PRODUCT.

DURATION OF IMPLIED WARRANTIES: EXCEPT TO THE EXTENT PROHIBITED BY APPLICABLE LAW, ANY IMPLIED WARRANTY OF MERCHANTABILITY OR FITNESS FOR A PARTICULAR PURPOSE ON THIS PRODUCT IS LIMITED IN DURATION TO THE DURATION OF THIS WARRANTY.

Some states do not allow the exclusion or limitation of incidental or consequential damages, or allow limitations on how long an implied warranty lasts, so the above limitations or exclusions may not apply to you. This Limited Warranty gives you specific legal rights and you may have other rights which vary from state to state.

D455714504

This unit includes a preinstalled Sony Lithium battery (CR2032) as back-up power source for the clock, which is preset to EST (Eastern Standard Time) at the factory. And this battery is considered part of the product.



The CD, iPod & iPhone ►II and VOLUME + buttons have a tactile dot.

Setting the clock for the first time

This unit is preset to the current EST (Eastern Standard Time) at the factory, and is powered by the back up battery. All you need to do the first time is just plug it in and select your time zone.

- Plug in the unit. The current EST (Eastern Standard Time) appears in the display.
- Press and hold **BRIGHTNESS/TIME ZONE** for at least 2 seconds. Area number "2" flashes in the display.
- Press **ALARM TIME SET +** or **-** repeatedly to select the number as follows:

Area number	Time zone
1	Atlantic standard Time
2	Eastern standard Time (default setting)
3	Central standard Time
4	Mountain standard Time

5	Pacific standard Time
6	Yukon standard Time
7	Hawaiian standard Time

Press **BRIGHTNESS/TIME ZONE** to set.

Note

Though the clock is correctly set at the factory, discrepancies may arise during transport or storage. If necessary, set the clock to the correct time by referring to "Setting the clock manually".

When daylight saving time (summer time) begins

This model automatically adjusts for daylight saving time (summer time). "⚡" is displayed from the beginning of daylight saving time (summer time) and disappears at the end of the daylight saving time (summer time) automatically.

- Daylight saving time (summer time) begins at: 2:00 AM on the second Sunday of March.
- Standard time begins at: 2:00 AM on the first Sunday of November.

To cancel Automatic DST/Summer Time adjustment during the daylight saving time (summer time) period

The Automatic DST/Summer Time adjustment can be canceled. Press and hold **CLOCK** and **BRIGHTNESS/TIME ZONE** at the same time while the clock is displayed.

"Auto → OFF" appears in the display to show that Automatic DST/Summer Time adjustment has been canceled. The display returns to the clock.

Notes

- The change timing of Automatic DST/Summer Time adjustment employed by the unit (see above) is subjected to variation by circumstances and the law in each country/region. In such a case, cancel the Automatic DST/Summer Time adjustment and set the DST display manually as necessary. Customers living in a country/region that does not use the daylight saving time (summer time) must cancel Automatic DST/Summer Time adjustment before using the unit.
- To activate Automatic DST/Summer Time adjustment again, press and hold **CLOCK** and **BRIGHTNESS/TIME ZONE** at the same time. "Auto → ON" appears in the display to show that Automatic DST/Summer Time adjustment has been activated. The display returns to the clock.

Setting the clock manually

- Plug in the unit.
- Press and hold **CLOCK** for at least 2 seconds. The year starts to flash in the display.
- Press **ALARM TIME SET +** or **-** repeatedly to set the year.
- Press **CLOCK**.
- Repeat steps **3** and **4** to set the month, the day, hour, and minute, and then press **CLOCK**.

And the seconds start incrementing from zero.

Notes

- If you do not press a button for about 1 minute while setting the clock, the clock setting will be canceled.
- A calendar is installed in this unit. When the date is set, a day of the week is automatically displayed.
 - SUN = Sunday, MON = Monday, TUE = Tuesday, WED = Wednesday, THU = Thursday, FRI = Friday, SAT = Saturday

To display the year and date

Press **SNOOZE/DATE/SLEEP OFF** once for the date, and within about 3 seconds press it again for the year.

The display shows the date or year for about 3 seconds and then changes back to the current time.

Setting the brightness of the display

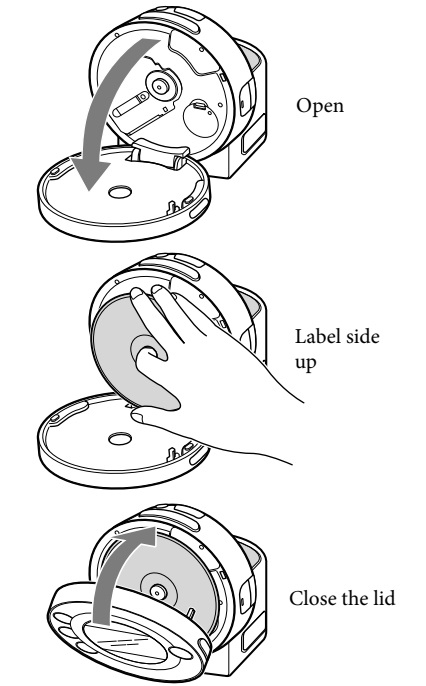
Three levels of brightness are available by pressing **BRIGHTNESS/TIME ZONE**.

High (default) → Middle → Low

Playing a CD

An 8 cm (3-inch) CD can be played without an adaptor.

- Open the CD compartment lid and insert a disc. After placing the disc, close the lid.



- Press **CD ►II**. "CD ►" appears in the display to indicate the CD is playing.
- Press **VOLUME +** or **-** repeatedly to adjust the volume.

To	Press
Pause	CD ►II
Resume play after pause	CD ►II again

Cue to the beginning of the current track (AMS*) **◀◀****

Cue to the next track (AMS*) **▶▶****

Go back at high speed **Hold down ◀◀**

Go forward at high speed **Hold down ▶▶**

Locate a previous track **◀◀ repeatedly** (AMS*)**

Locate a succeeding track **▶▶ repeatedly** (AMS*)**

Stop play **■**

* AMS = Automatic Music Sensor
**These operations are possible during both play and pause.

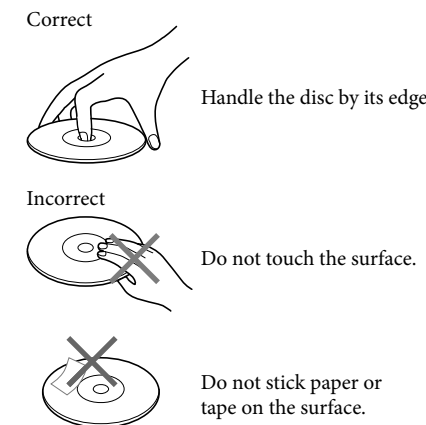
About CD-Rs/CD-RWs

This unit is compatible with CD-Rs/CD-RWs but playback capability may vary depending on the quality of the disc, the recording device and application software.

Music discs encoded with copyright protection technologies

This product is designed to play back discs that conform to the Compact Disc (CD) standard. Recently, various music discs encoded with copyright protection technologies are marketed by some record companies. Please be aware that among those discs, there are some that do not conform to the CD standard and may not be playable by this product.

To handle compact discs



Note on DualDiscs

A DualDisc is a two sided disc product which mates DVD recorded material on one side with digital audio material on the other side. However, since the audio material side does not conform to the Compact Disc (CD) standard, playback on this product is not guaranteed.

Notes

- Discs with non-standard shapes (e.g., heart, square, star) cannot be played on this unit. Attempting to do so may damage the unit. Do not use such discs.
- If you press **CD ►II** when there is no disc in the CD compartment, "00" flashes for about 5 seconds in the display.

Various Modes of CD Playback

You can play tracks repeatedly or in random order.

Press MODE.

Each press changes the play mode as follows:

Display Indication	Play Mode
None	(normal play)
All the tracks are played once.	↓
"REP 1"	(single repeat)
A single track is played repeatedly.	↓
"REP"	(all repeat)
All the tracks are played repeatedly.	↓
"SHUF"	(shuffle play)
All the tracks are played once in random order.	↓
"REP SHUF"	(shuffle repeat)
All the tracks are played repeatedly in random order.	

–Auto preset tuning

- Press **RADIO BAND** to turn on the radio and select the AM or FM band.
- Press and hold **RADIO BAND** until "Auto" appears in the display.
- Press **MEMORY/DISPLAY**. The unit automatically presets the available channels in order.

Tuning in to a station

- Press **RADIO BAND** to turn on the radio and select the AM or FM band.
- Press **PRESET +** or **-** to select the desired preset number.
- Adjust the volume using **VOLUME +** or **-**.

Improving the reception

- FM:** Extend the FM wire antenna fully to increase reception sensitivity.
- AM:** Connect the supplied AM loop antenna to the unit. Rotate the antenna horizontally for optimum reception.

Tip

If the FM broadcast is noisy, press **MODE** to turn off "ST" in the display. The radio becomes clearer although the sound becomes monaural.

Notes on radio reception

- Keep digital music players or mobile phones away from the AM loop antenna or the FM antenna, as this may lead to interference of reception.
- When you are listening to the radio with an iPhone connected to the unit, interference with radio reception may occur.
- When you are listening to the radio while charging an iPod, interference with radio reception may occur.

Playing an iPod

You can enjoy audio from iPod by connecting to this unit. To use an iPod, refer to the user's guide of your iPod.

Notes

- When inserting an iPod into the unit, be sure to use the universal dock adapter supplied with your iPod or commercially available from Apple Inc.
- If you are using an iPhone, iPhone 3G, iPhone 3GS or iPhone 4, attach the supplied universal dock adapter for iPhone, iPhone 3G, iPhone 3GS or iPhone 4 before connecting. The adapter number, ②, ⑤ or ⑨, is shown on the bottom-rear of the supplied universal dock adapters. ② is for the iPhone, ⑤ is for the iPhone 3G & iPhone 3GS and ⑨ is for the iPhone 4. Check the adapter number before use.
- The connector of the unit is exclusively for use with iPod. When you use a device that does not match the connector, connect it to the **AUDIO IN** terminal of this unit with the supplied audio connecting cable.
- Sony cannot accept responsibility in the event that data recorded on an iPod is lost or damaged when using an iPod connected to this unit.
- For details of environmental conditions for operating your iPod, check the website of Apple Inc.

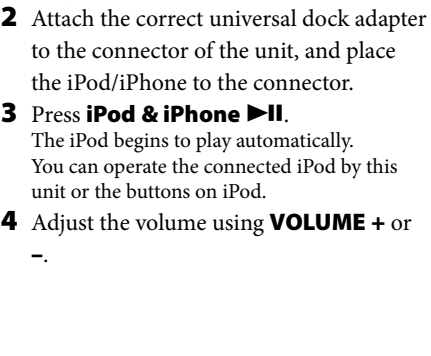
–Preset tuning

You can preset 20 stations for FM and 10 stations for AM.

Presetting a station

- Follow steps 1 and 2 in "Manual tuning" to tune the frequency you wish to preset.
- Hold down **MEMORY/DISPLAY** for at least 2 seconds.
- Press **PRESET +** or **-** to select the preset number, then press **MEMORY/DISPLAY**. The frequency is stored with the selected preset number.

Example: The following display appears when you preset FM 105.8 MHz to preset number 1 for FM.



The display shows the frequency for about 10 seconds, and then returns to the current time.

To preset another station, repeat these steps.

Note

If you try to store another station with the same preset number, the previously stored station will be replaced.

To	Press
Turn off the iPod	OFF , or press and hold iPod & iPhone ►II
Pause playback	iPod & iPhone ►II To resume play, press it again.
Go to the next track	▶▶
Go back to the previous track	◀◀
Locate a point while listening to the sound	▶▶ (forward) or ◀◀ (backward) while playing and hold it until you find the point.
Locate a point while observing the display	▶▶ (forward) or ◀◀ (backward) in pause and hold it until you find the point.
Go back to the previous menu	MENU**
Select a menu item or a track for playback	↕/↔**
Execute the selected menu or begin playback	ENTER**

* During playback, this operation goes back to the beginning of the current track. To go back to the previous track, press twice.
**These operations are available only when using the supplied remote commander.

- When placing or removing the iPod, hold the iPod at the same angle as that of the connector on this unit and do not twist or bend the iPod to prevent connector damage.
- Do not carry the unit with an iPod set on the connector. Doing so may cause a malfunction.
- When placing or removing the iPod, brace the unit with one hand and take care not to press the controls of the iPod by mistake.
- Before disconnecting the iPod, pause playback.

To use the unit as a battery charger

You can use the unit as a battery charger. The charging begins when the iPod is placed on the connector. The charging status appears in the display of iPod. For details, see the user's guide of your iPod.

On copyrights

iPhone, iPod, iPod classic, iPod nano, and iPod touch are trademarks of Apple Inc., registered in the U.S. and other countries. "Made for iPod," and "Made for iPhone" mean that an electronic accessory has been designed to connect specifically to iPod or iPhone, respectively, and has been certified by the developer to meet Apple performance standards. Apple is not responsible for the operation of this device or its compliance with safety and regulatory standards. Please note that the use of this accessory with iPod or iPhone may affect wireless performance.

Setting the alarm

This CD clock radio is equipped with 4 alarm modes—CD, iPod, radio and buzzer. Before setting the alarm, make sure to set the clock (see "Setting the clock for the first time").

To Set the alarm

- Press and hold **ALARM TIME SET A** or **B** for at least 2 seconds. "WAKE UP" appears and the hour flashes in display.
- Press **ALARM TIME SET +** or **-** repeatedly until the desired hour appears. To set the hour rapidly, hold down **ALARM TIME SET +** or **-**.
- Press **ALARM TIME SET A** or **B**. The minute flashes.
- Repeat step **2** to set the minute.
- Press **ALARM TIME SET A** or **B**. The days of the week blink.
- Repeat step **2** to set the days of the week. You can select the days from the following three options: Every day: SUN MON TUE WED THU FRI SAT Week day: MON TUE WED THU FRI Week end: SUN SAT
- Press **ALARM TIME SET A** or **B**. The alarm mode setting is entered.

- Press **ALARM TIME SET +** or **-** repeatedly until the desired alarm mode flashes. You can choose one mode among "CD", "iPod", "RADIO" and "BUZZER". Set the alarm mode as follows:
 - CD: see **[A]** Setting the CD alarm".
 - iPod: see **[B]** Setting the alarm for iPod".
 - RADIO: see **[C]** Setting the radio alarm".
 - BUZZER: see **[D]** Setting the buzzer alarm".

[A] Setting the CD alarm

For the CD alarm, the track you specified as the wake-up track is played first. (If the CD play mode is set to "SHUFFLE" or "SHUFFLE REP", all the tracks will be played in random order.)

- Perform steps **1** to **8** in "To set the alarm".
- Press **ALARM TIME SET A** or **B** to select "CD" alarm mode. "VOL" and "TRCK" appear in the display.
- Press **ALARM TIME SET +** or **-** to adjust the volume.
- Press **ALARM TIME SET A** or **B**. Track number flashes.
- Press **ALARM TIME SET +** or **-** to select the desired track number.
- Press **ALARM TIME SET A** or **B**. The setting is entered. When "A" or "B" does not appear in the display, press **ALARM TIME SET A** or **B** again. The CD will play at the set time.

Note

If the CD alarm does not operate because a disc error occurred, there is no disc, or the CD compartment lid is open, the buzzer alarm will operate instead.

[B] Setting the alarm for iPod

- Perform steps **1** to **8** in "To set the alarm".
- Press **ALARM TIME SET A** or **B** to select alarm mode for "iPod". "VOL" appears in the display.
- Press **ALARM TIME SET +** or **-** to adjust the volume.
- Press **ALARM TIME SET A** or **B**. The setting is entered. When "A" or "B" does not appear with "iPod" in the display, press **ALARM TIME SET A** or **B** again. The iPod will sound at the set time.

When using iPod touch/iPhone

- To use music stored in an iPod touch/iPhone to wake up, put the iPod touch/iPhone to the unit first, follow the steps above to set alarm time, and then select the music function.
- If you set the alarm for iPod while iPod touch/iPhone music is playing, and then turn the unit power off, when the alarm time comes on, the alarm music will start.
- Even if the alarm setting for iPod is complete, if you turn the power of iPod touch/iPhone off before inserting the iPod touch/iPhone into the unit, the alarm for iPod will not work.

[C] Setting the radio alarm

- Perform steps **1** to **8** in "To set the alarm".
- Press **ALARM TIME SET A** or **B** to select "RADIO" alarm mode. "VOL" and "PRESET" appears in the display.
- Press **ALARM TIME SET +** or **-** to adjust the volume.
- Press **ALARM TIME SET A** or **B**. Band ("FM" or "AM") flashes.
- Press **ALARM TIME SET +** or **-** to select the desired band. "–" is the last station received.
- Press **ALARM TIME SET A** or **B**. Preset number flashes.
- Press **ALARM TIME SET +** or **-** to select the desired preset number. The setting is entered. When "A" or "B" does not appear with "RADIO" in the display, press **ALARM TIME SET A** or **B** again. The radio will turn on at the set time.

[D] Setting the Buzzer Alarm

- Perform steps **1** to **8** in "To set the alarm".
- Press **ALARM TIME SET A** or **B** to select "BUZZER" alarm mode. The setting is entered. When "A" or "B" does not appear in the display, press **ALARM TIME SET A** or **B** again. The buzzer will sound at the set time.

Note

The volume cannot be set for the buzzer alarm.

To confirm an alarm setting

Press **ALARM/TIME SET +** or **-**. The setting will be displayed for 4 seconds.

To change an alarm setting

Press and hold **ALARM/TIME SET +** more than 2 seconds to move the alarm time forwards. Press and hold **ALARM/TIME SET –** more than 2 seconds to move the alarm time backwards.

When you release the button, the changed time will be displayed for 2 seconds. To change the alarm time again, press **ALARM/TIME SET +** or **-** within these 2 seconds, otherwise the setting change will be fixed as displayed.

To doze for a few more minutes

Press **SNOOZE/DATE/SLEEP OFF**. The sound turns off but will automatically come on again after about 10 minutes. You can change the snooze time by pressing **SNOOZE/DATE/SLEEP OFF** repeatedly within 3 seconds. The maximum length of the snooze time is 60 minutes.

To stop the alarm

Press **OFF/ALARM RESET** to turn off the alarm. The alarm will sound again at the same time the next day.

To deactivate the alarm

Press **ALARM/TIME SET A** or **B** to turn off the **ALARM A** or **B** indicator from the display.

Notes on alarm in the event of a power interruption

- When the alarm sound is set to RADIO, CD, or iPod, it will change to "BUZZER" automatically.
- If the backup battery is exhausted, the alarm will not work in the event of power interruption. Replace the battery periodically.

Setting the sleep timer

You can fall asleep to the sound using the built-in sleep timer that turns off the unit automatically after a preset duration.

- Press **SLEEP** while the unit is turned on. SLEEP appears in the display.
- Press **SLEEP** to set the sleep timer duration. Each time you press **SLEEP**, the duration of minutes changes as follows:

90 → 60 → 30 → 15
OFF

The display returns to clock mode four seconds after you have finished setting the duration setting and released **SLEEP**, and then the sleep timer starts. The unit will play for the duration you set, and then shut off.

To turn off the unit before the preset time

Press **SNOOZE/DATE/SLEEP OFF** or **OFF/ALARM RESET**.

To change the sleep timer setting

You can press **SLEEP** repeatedly to select the desired sleep timer setting even after the sleep timer has been activated.

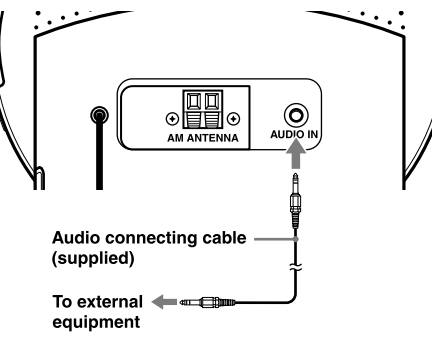
To deactivate the sleep timer

Press **SLEEP** repeatedly to set the sleep timer to "OFF" in step **2**.

Connecting external equipment

To listen to sound

- Connect the **AUDIO IN** jack of the unit to the line out jack or headphone jack of the external equipment using the audio connecting cable (supplied).



- Press **AUDIO IN** to display "AUDIO IN".
- Play the equipment connected to the **AUDIO IN** jack.
- Adjust the volume using **VOLUME +** or **-**.

To return to the radio

Press **RADIO BAND**.

The frequency is shown in the display.

To return to the CD

Press **CD ►II**.

To return to the iPod

Press **iPod & iPhone ►II**.

To stop listening

Press **OFF**, and stop playback on the connected unit.

Notes

- Refer also to the connected equipment's manual.
- The supplied audio connecting cable may not be used with some external equipment. In this case, use a cord suitable for the external equipment you are using.
- When you listen to the radio with external equipment connected, turn off the connected equipment to prevent noise. If noise occurs, even when the equipment is turned off, disconnect and place the external equipment away from the unit.