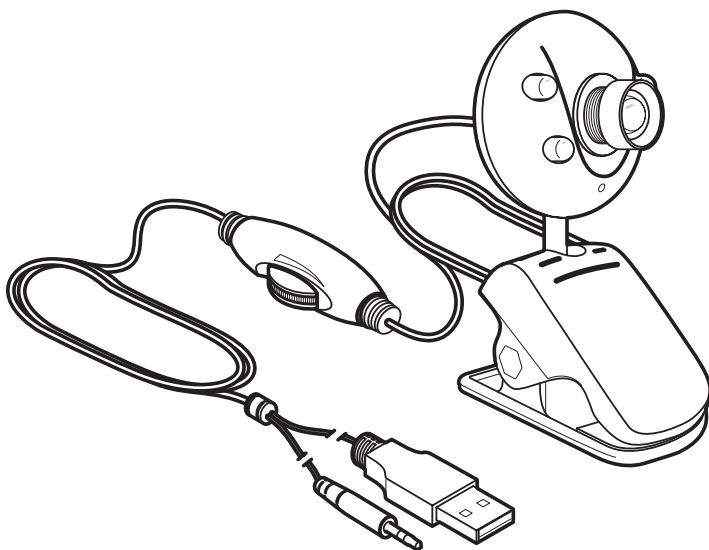


ChatCam™ Webcam Model 4310100



System Requirements:

- IBM® or Compatible PC with Windows® XP/SP2/Vista/Win7
- USB port
- Tray loading CD-ROM Drive

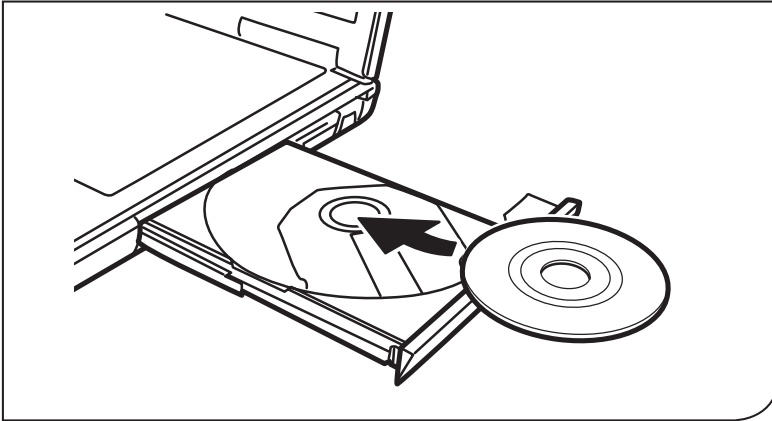
Packaging Contents:

- Webcam
- ooVoo™ and Install CD
- Quick Start Guide

Contents

Installing the Software	2
Installing your New Webcam	5
Capturing a Photograph	6
Capturing a Video	6
Setting the Webcam Options	8
Webcam Features	11
Maintaining Your Webcam	11

Installing the Software



- 1** Insert the CD into the CD drive.

Note: If the install screen does not launch automatically, open the folders on the CD and double-click the setup.exe file.



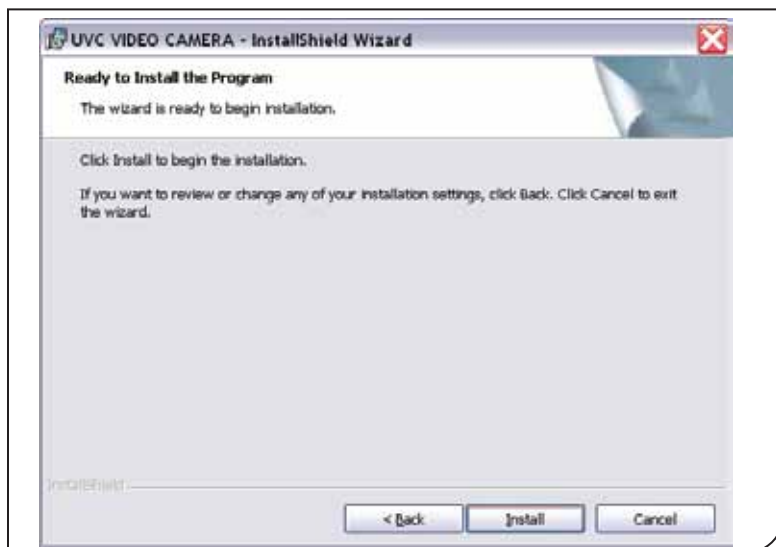
- 2** The Micro Innovations® software install window will appear. Select **Webcam Driver** to begin the installation.



- 3** The InstallShield® Wizard will guide you through the rest of the Webcam Driver installation. Click **Next** to continue.



- 4** The software will automatically choose a default destination folder, or you may choose the destination folder yourself. Click **Next** to continue.



- 5** Click **Install** to begin the installation of the Webcam Software.



- 6** When the Webcam Software has completed installation, click **Finish** to exit the wizard. Proceed to Step 7 to install the ooVoo™ Software.

7

The Micro Innovations® software install window will still be active on the desktop. Select **ooVoo™ Software** to begin the installation.



8

The ooVoo™ InstallShield® Wizard screen will appear. Click **Next** to begin the installation of the ooVoo™ Software.



9

The software will automatically choose a default destination folder, or you may choose the destination folder yourself. Click **Install** to continue.



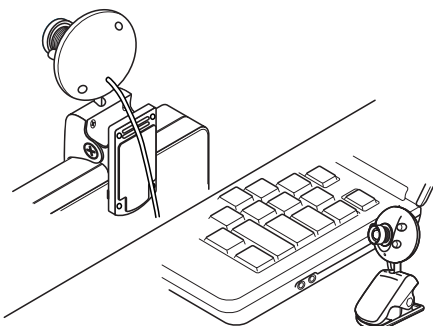


- 10** Follow the instructions on the screen to create your ooVoo™ account. Use the ooVoo™ login screen to sign-in to begin chatting with your camera.

Restart your computer after completing the software installation procedures.

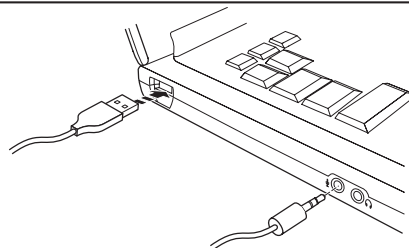
Installing your New Webcam

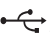
1



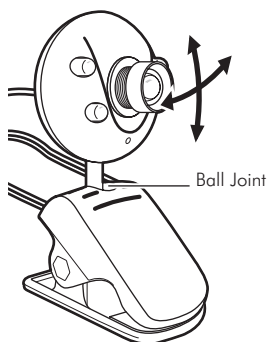
Mount webcam above the computer monitor or use on your desk as a standalone camera.

2



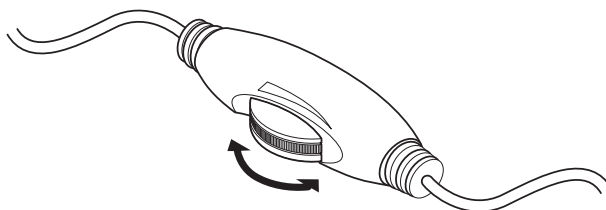
Plug in microphone cable to microphone jack, and USB cord into an available USB port on the computer. USB ports are identified as .

3



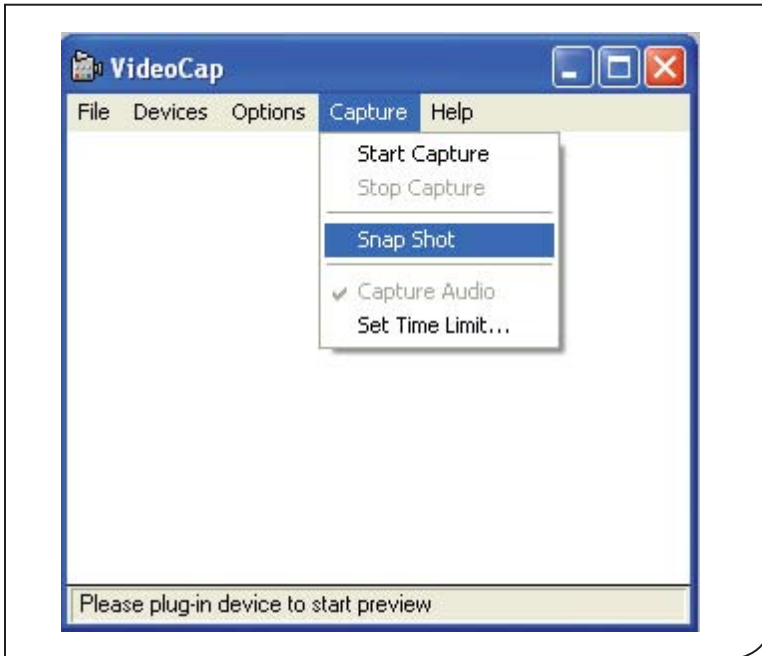
Rotate the ball joint to adjust the angle of view.

4



Use the switch on the cord to adjust the LED brightness on the webcam's face.

Capturing a Photograph



1

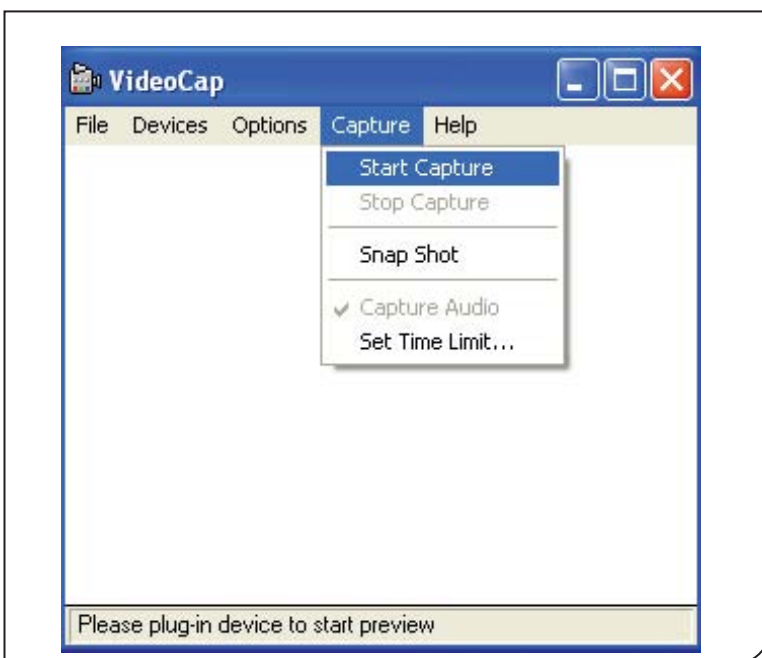
Launch VideoCap from your desktop.



Click on **Capture**. Click on **Snap Shot**.

After the image has been captured, it will open in your default photo viewing application.

Capturing a Video

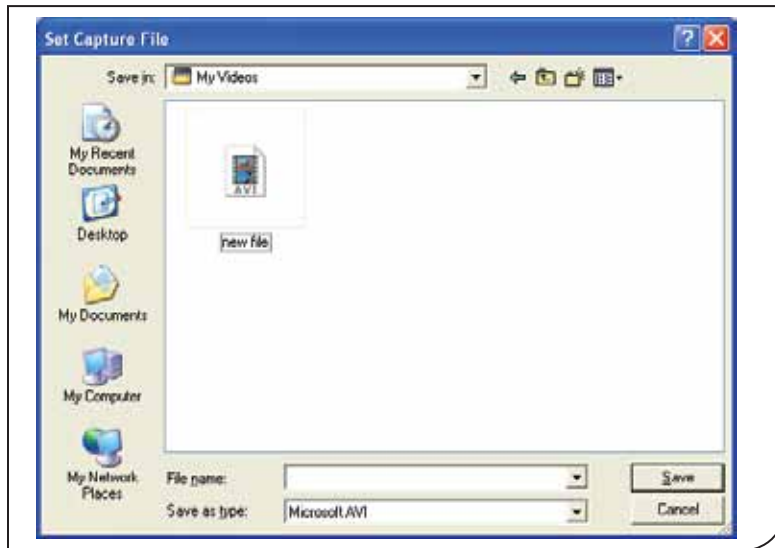


1

Launch VideoCap from your desktop.



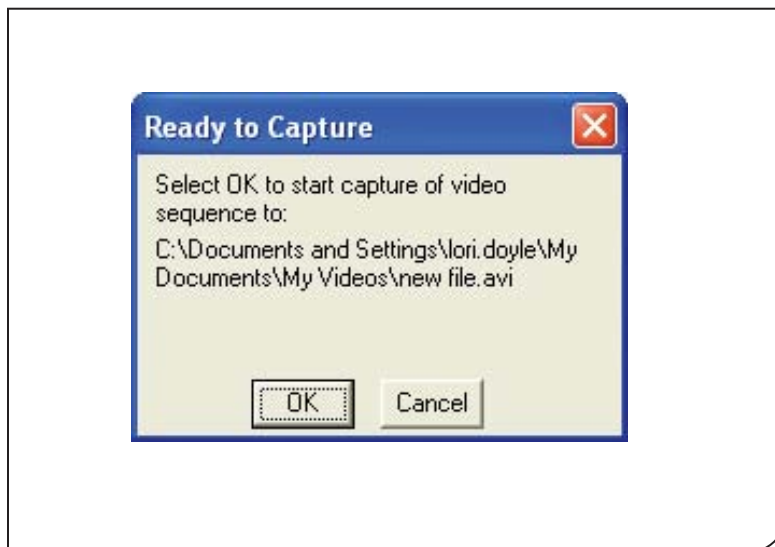
Click on **Capture**. Click on **Start Capture**.



2

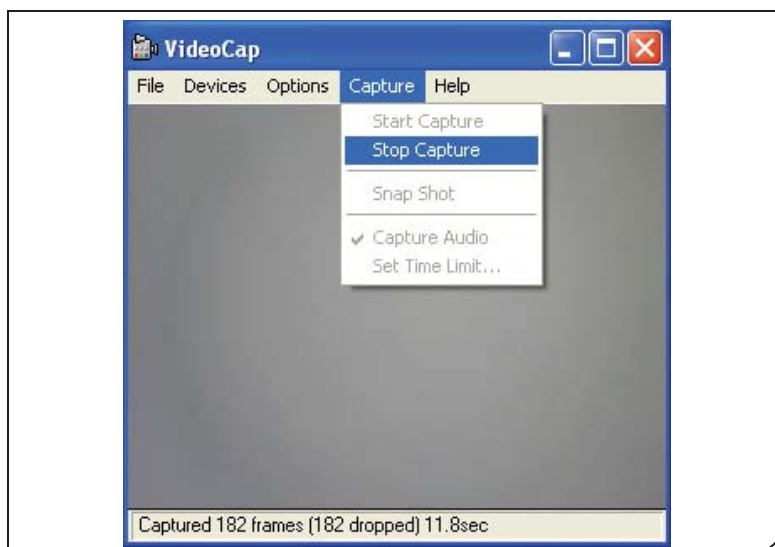
The very first time you are recording video, the Set Capture File window will appear. Navigate to your desired destination, choose a file name, and click **Save**.

Note: This step will be skipped if this is not your first time capturing video.



3

Click **OK** to start capturing video.

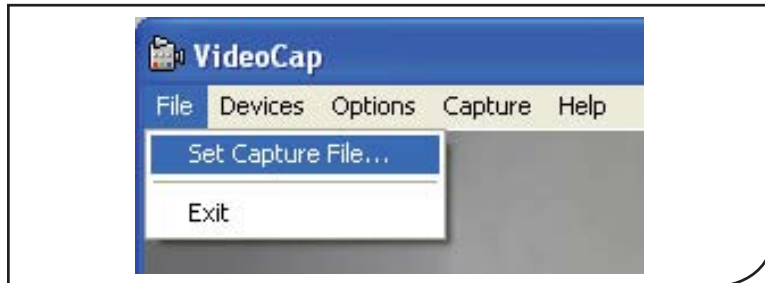


4

To stop capturing video, click on **Capture**. Click on **Stop Capture**.

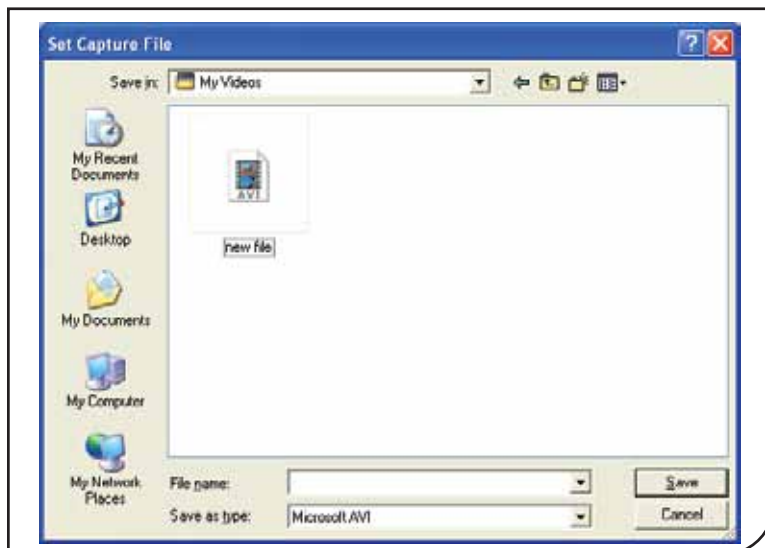
Setting Webcam Options

The software has many options available to personalize your settings.



1

To select or change the folder where your videos will be automatically saved, click on **File** and then select **Set Capture File**.



2

Navigate to the desired folder and click **OK**. The default folder is My Documents.



3

The **Devices** menu allows you to switch between your currently installed video, photo, or audio capturing devices (if applicable).



4

The **Preview** option allows you to view on your screen what the camera is currently seeing. It is selected as a default.

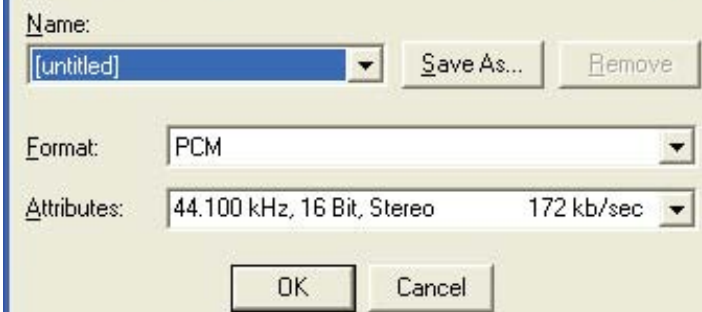
Setting Webcam Options

5

The **Audio Format...** option includes sound selection options for capturing audio.

Some options may not be available or may be automatically selected.

Sound Selection

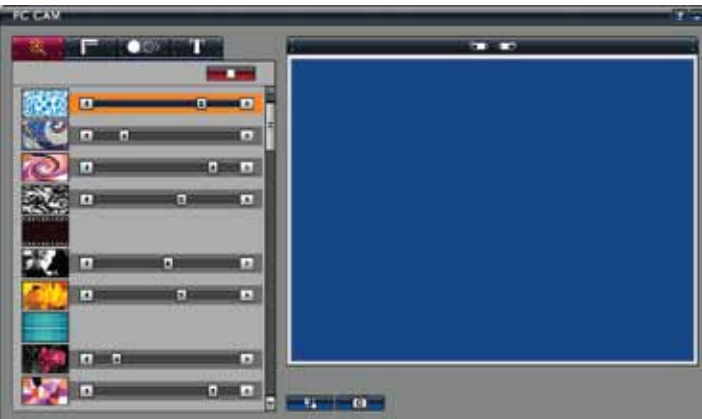


The Sound Selection dialog box has a title bar with a close button. It contains a 'Name:' field with a dropdown menu showing '[untitled]', a 'Save As...' button, and a 'Remove' button. Below this is a 'Format:' dropdown menu set to 'PCM'. Under 'Attributes:', there are two dropdown menus: the first shows '44.100 kHz, 16 Bit, Stereo' and the second shows '172 kb/sec'. At the bottom are 'OK' and 'Cancel' buttons.

6

The **Effect** option brings up a screen to select various display effects including effects, frames, animations, and text.

The **Effect** options can also be accessed by clicking the icon on your desktop.



7

The **Audio Capture Filter...** includes additional options for capturing audio.

Some options may not be available or may be automatically selected.

Properties



The Audio Input Mixer Properties dialog box has a title bar with a close button. It has two tabs: 'Master Input Mix' and 'Pin Line Input Mix'. The 'Master Input Mix' tab is active and shows a volume slider, 'Treble' and 'Bass' sliders, and checkboxes for 'Enable', 'Loudness', and 'Mono'. The 'Pin Line Input Mix' tab shows a similar set of controls, including a 'Pin Line:' dropdown menu set to 'Line In'. At the bottom are 'OK', 'Cancel', and 'Apply' buttons.

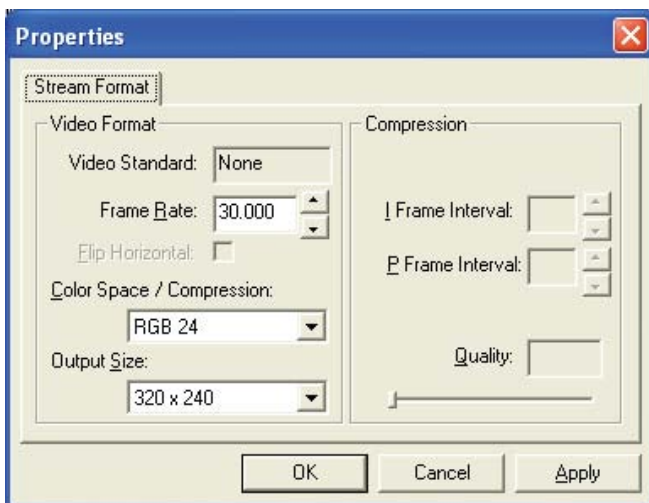


8

The **Video Capture Filter...**

includes options to set brightness, contrast, hue, etc. by sliding the bars or typing in a number.

Some options may not be available or may be automatically selected.



9

The **Video Capture Pin...**

includes stream formatting options.

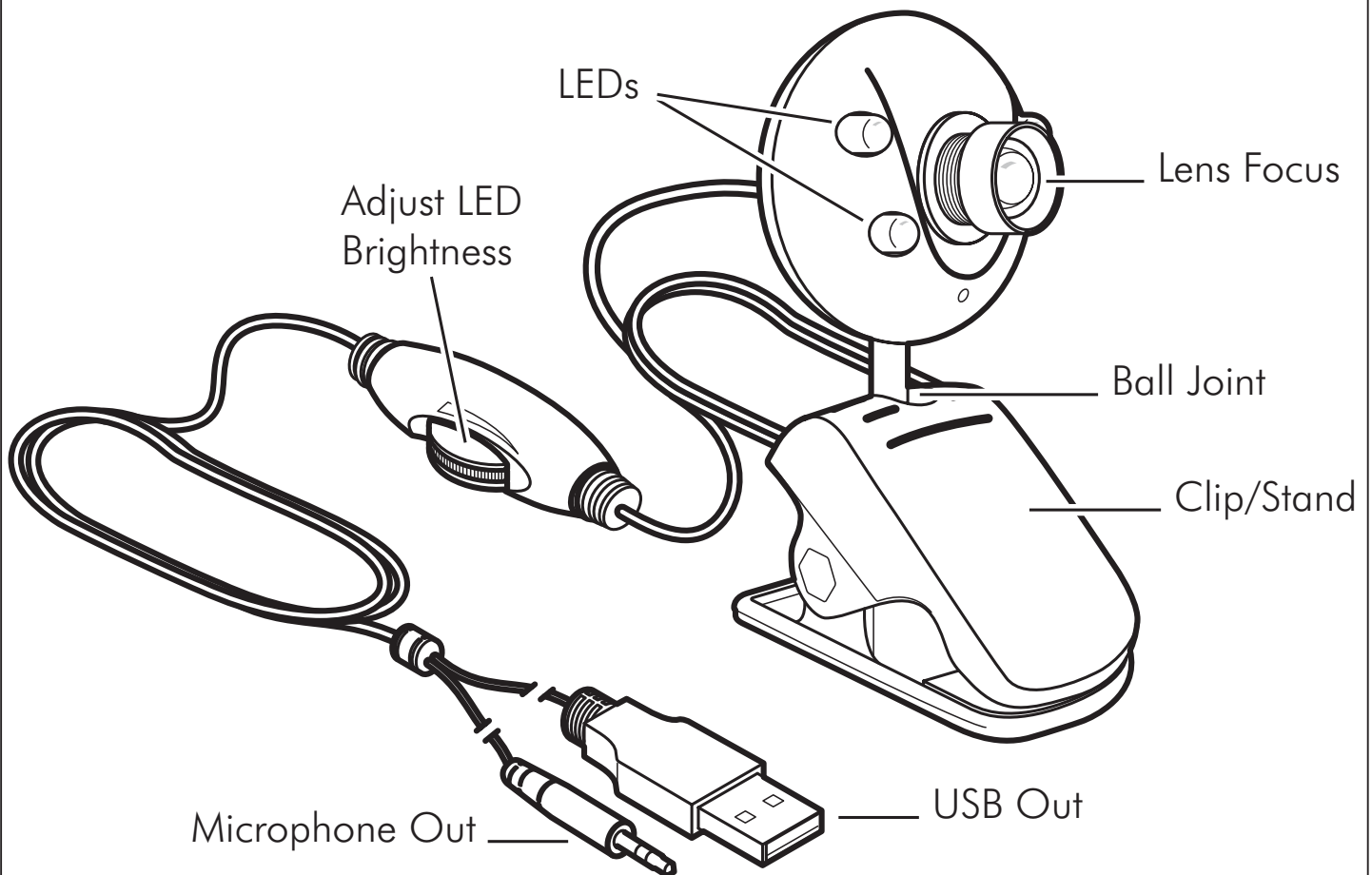
Some options may not be available or may be automatically selected.



10

In addition to capturing videos and pictures, the **Capture** menu allows you to set a time limit on your videos. Click **Set Time Limit**.

Webcam Features



Maintaining Your Webcam

Regular maintenance ensures a longer product life and minimizes the chance of causing damage to your webcam.

- Always disconnect the webcam before cleaning it.
- Clean the lens with a lint-free cloth.
- Do not try to repair any part of this product. For technical support please visit www.digitalinnovations.com/support.html