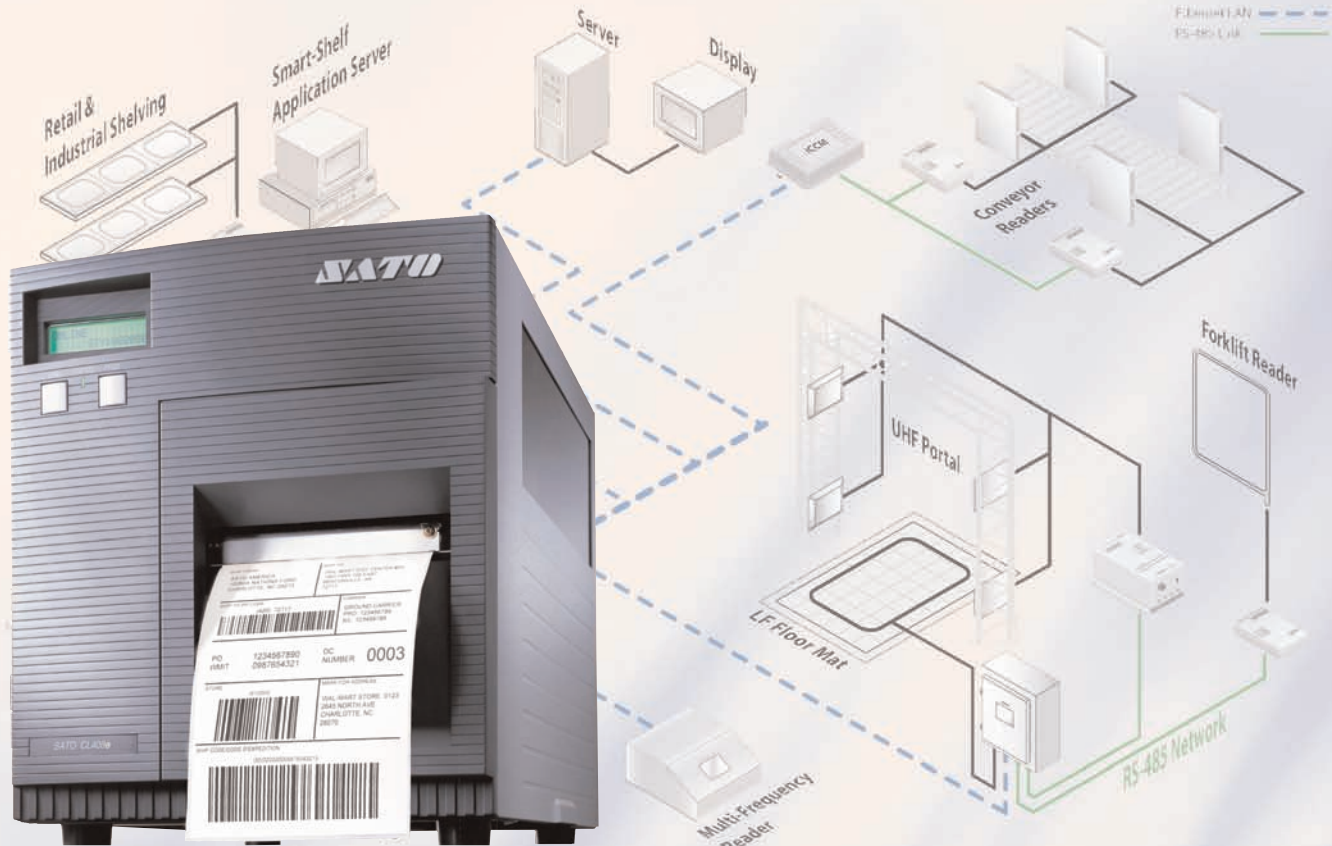


# MULTI-PROTOCOL RFID PRINTER/ENCODER



## CLe RFID Smart Printers

The industrial CLe high-speed printers are ideal for a range of applications, including:

- Compliance Labeling**
- Warehouse Logistic**
- Access Control**
- Asset Tracking**
- Baggage Tagging**
- Retail Labeling**
- Product Authentication**

### Smart Printer

In a one-step process, the CLe RFID printers can read, write and print smart labels and tags with embedded RFID transponders. Transponders include integrated circuitry with an antenna and are designed to be programmed and re-programmed using radio waves.

### RFID - Radio Frequency Identification

RFID tags are read, written and verified inside the printer prior to printing. In the case of a tag failure, the CLe RFID printers will mark the tag and advance to the next one, assuring top reliability in mission critical applications.

### Rugged Design

The CLe's heavy-duty metal construction, proven reliability, and excellent media handling deliver optimum performance in the most demanding environments.

### XML Enabled Available

Direct XML connectivity for printing across technology platforms and applications without the use of labeling software.



<p><b>RFID:</b></p> <ul style="list-style-type: none"> <li>• HF (High-Frequency) Standards Supported <ul style="list-style-type: none"> <li>■ Tag-it™</li> <li>■ I-Code</li> <li>■ ISO15693</li> </ul> </li> <li>• UHF (Ultra-High Frequency) Standards Supported <ul style="list-style-type: none"> <li>■ EPC Class 1</li> <li>■ EPC Class 0/0+</li> <li>■ ISO 18000-06B</li> <li>■ EPC Gen 2</li> </ul> </li> <li>• RFID Counters</li> <li>• Calibration for New Inlay Types</li> <li>• Print-Write-Print for out of Spec Tags</li> </ul>
---

**Memory:**  
16 MB Standard RAM  
2 MB Standard Flash  
1 MB PCMCIA - Optional  
6 MB Optional Flash - Total

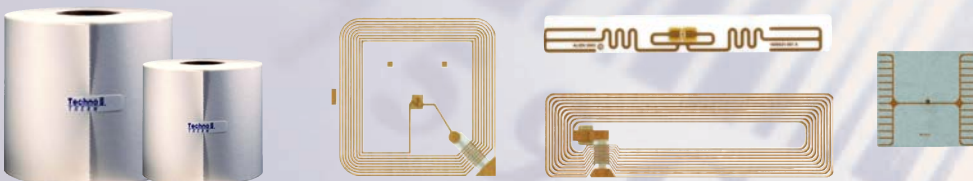
**Processor:**  
32-BIT RISC

**Media:**  
Roll-fed or fan-fold, die-cut or continuous direct thermal (thermal transfer) "smart" labels, synthetics, and tag stock with or without black mark, gap, or notch.  
Max. Caliper: 0.01" (0.25 mm)  
Max. Roll Diameter: 8.6" (218 mm)  
Wind: Face-In

**Sensing:**  
Adjustable transmissive sensor for gap.  
Reflective sensor for black mark. Automatic, programmable setting of top of form. Label present sensor - optional with label dispenser.  
Ribbon-out sensor

**Interface Module:**

- Serial - RS232 (up to 57.6k bps)
- Parallel - IEEE1284 (ECP)
- Ethernet - 10/100BaseT
- Wireless 802.11b
- Twinax/Coax
- RS422/485
- USB Adapter



Brand or product names are trademarks and registered of their respective companies.

	CL408e-RFID	CL412e-RFID
<b>Printing Method</b>	Direct Thermal, Thermal Transfer	
<b>Print Resolution</b>	203 dpi (8 dpmm)	305 dpi (12 dpmm)
<b>Print Speed</b>	6 ips (150 mm/s)	
<b>Media Width</b>	Max. 5.1" (131 mm) /Min 0.87" (22 mm)	
<b>Max. Print Width</b>	4.1" (104 mm)	
<b>Min. Print Length</b>	0.24" (6 mm)	
<b>Max. Print Length</b>	49.2" (1249 mm)	32.8" (833 mm)
<b>Max. Ribbon Size</b>	4.4" (111 mm) W x 1475 ft. (450 m) L; Face-In	
<b>Dimensions</b>	10.7" W x 16.9" D x 12.6" H (271mm W x 430 mm D x 321 mm H)	
<b>Weight</b>	28.7 lbs (13 kg)	

**Barcode Symbolologies:**  
**Elementary:** UPC-A, UPC-E, EAN-8, EAN-13, Code 39, Code 93, Code 128, Codabar, MSI, Bookland, Industrial 2/5, Interleaved 2/5, Matrix 2/5, Postnet, UCC/EAN 128, RSS, Composite  
**2-Dimensional:** PDF417, Micro PDF417, Truncated PDF417, Maxicode, Data Matrix, QR Code

**Fonts:**  
Bitmap - 12 proportional, mono-spaced and outline fonts (Code table 858). Scalable Internal CG Triumvirate® & CG Times® fonts. Optional Downloaded TrueType® fonts, scalable from 8 to 72 points.

**Barcode & Font Formatting:**  
360° rotation of barcodes and text, character expansion horizontally and vertically, sequential numbering, form overlay for high-speed editing of complex formats.

**Graphic Support:**  
Printing & storage of .PCX, .BMP format, SATO Hex/binary

**Software:**  
Windows® Drivers (Windows® 95, 98, ME, NT4.0, 2000, XP)  
Printer Utilities

**Electrical Requirements:**  
115V/220V (± 10%), 50/60 Hz (± 1%)  
Agency Certifications: CE, UL, CSA, TÜV

**Environmental Requirements:**  
Operating: 41° to 104°F (5° to 40°C)  
15-85% RH, non-condensing  
Storage: 23° to 140°F (-5° to 60°C)  
Max. 90% RH, non-condensing  
ESD: 8kV

**Optional Features:**  
Label Cutter, Label Dispenser, Label Rewinder, Memory Expansion, Real Time Clock, Label Gallery

