

INSTALL INSTRUCTIONS KK-ST-FLIP

FLIP DOWN REAR STEP OPTION

(For Rear Permanent Mount Step order with KK-x-ST-RP)

TOOLS REQUIRED:

| | |
|---------------------|---------------|
| Ratcheting wrench | Power drill |
| Standard socket set | Drill bit set |
| Open-end wrench set | |

HARDWARE:

| <u>QTY</u> | <u>DESCRIPTION</u> | <u>PART #</u> |
|------------|-----------------------------|---------------|
| 10 | 1/2" x 1 1/2" Hex head bolt | GSM33050 |
| 4 | 1/2" x 3 1/2" Hex head bolt | GSM33055 |
| 32 | 1/2" Flat washer | GSM31012 |
| 10 | 1/2" Lock washer | GSM31030 |
| 4 | 1/2" Nylock nut | GSM30020 |
| 10 | 1/2" Hex nut | GSM30011 |
| 2 | 1/4" Stainless nylock nut | GSM30046 |

SUB ASSEMBLY:

1. Confirm receipt of all parts.
2. Flip down portion of step will come assembled.
3. Slide Support Channels into the Step.
4. Bolt together using (4) 1/2" x 4" Hex Head Bolts, 1/2" Nylock Nuts, 1/2" Flat Washers.

Note: Be sure that flat side of Support Channels face towards outside of vehicle

INSTALLATION:

1. MOUNT FRAME BRACKETS:

- Determine Driver and Passenger side Frame Brackets using view on final page.
- Line brackets up with holes in frame rail of vehicle.
- Bolt brackets to frame using (4) 1/2" x 1 1/2" Hex Head Bolts, 1/2" Hex Head Nuts, 1/2" Flat Washers, and 1/2" Lock Washers
- Do not tighten hardware at this time.

Note: FORD VANS Only: You must use a spacer between the Frame Rail and the Frame Bracket on the forward mounting holes. Use (2) 1/2" Supplied flat washers

2. MOUNT STEP AND RAIL ASSEMBLY:

- Step can be mounted at various heights.
- With height determined, loosely bolt Assembly to Frame Brackets using (6) 1/2" x 1 1/2" Hex Head Bolts, 1/2" Hex Head Nuts, 1/2" Flat Washers, and 1/2" Lock Washers

3. FINAL SQUARING:

- With step square at desired height, tighten all hardware.

- Start with the Frame Brackets and then check for square again.
- Proceed to tighten Support Channels to Frame Brackets then Frame Brackets to Step Plate.

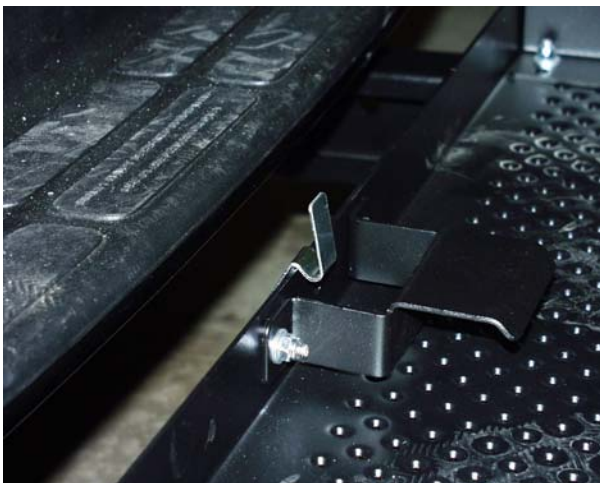
Note: There are numerous holes in the step brackets for other Vehicle applications.

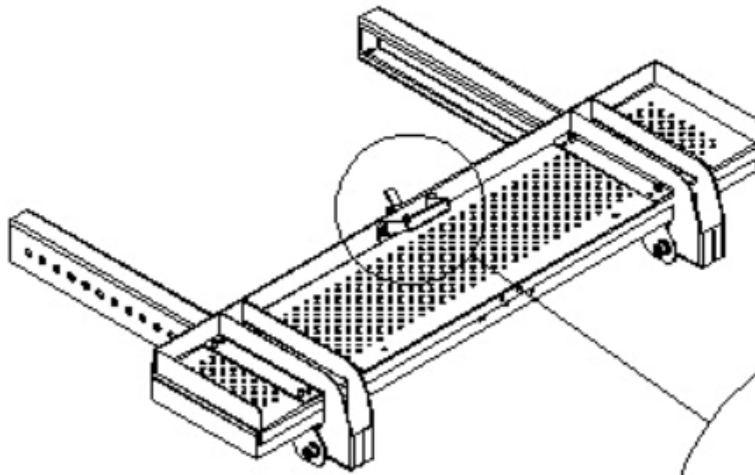
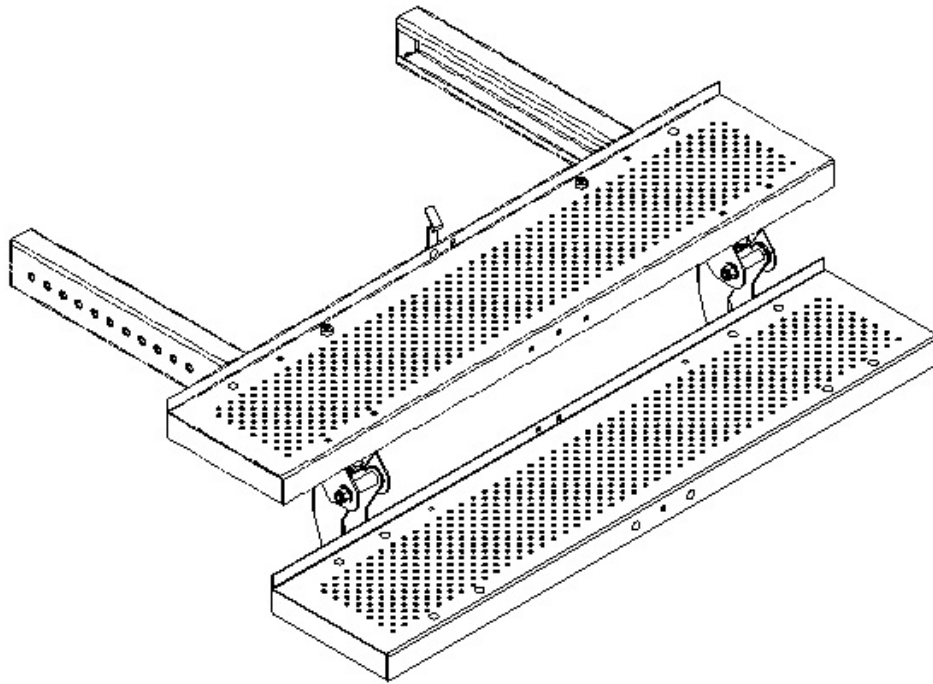
IF FLIP PORTION OF STEP WAS ORDERED SEPARATELY USE THE FOLLOWING:

INSTALLATION:

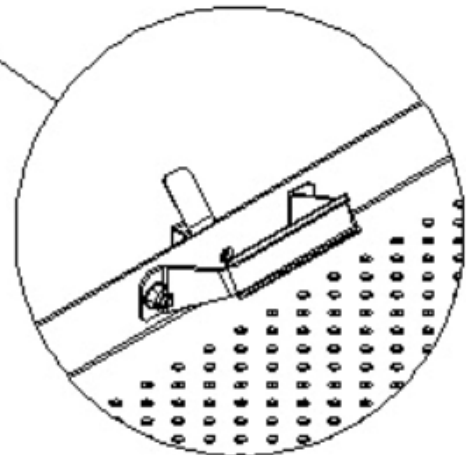
1. MOUNT FLIP DOWN STEP:

- Remove 1/2" hardware located on frame brackets of existing step.
- Install (4) flip down step adapter plates reusing 1/2" hardware removed from permanent rear step.
- Attach 2nd step to existing adapter plates using (2)-1 per side-1/2" x 3 1/2" Hex bolt, washer, nylon spacer and nylock nut.
- Tighten hardware.
- Attach spring latch onto existing rear step using 1/4" x 3/4" Stainless Carriage bolt and nylock nuts. *Some models do not contain prepunched hole for spring latch..*
- Mount rubber bumpers to existing step.
- Using outer pre-punched holes, attach rubber bumpers to existing step using #10 x 3/4" machine screw and nylock nuts. *Do not overtighten.*





CLOSED CONFIGURATION



DETAIL A
SCALE 1 : 4

Consolidator® • Kwik-Raze® • Collins Dynamics® • Kwik-Kit™ Prisoner Transports • K-9 Transports

75 Jacksonville Rd • P.O. Box 2099 • Warminster, PA 18974 • 800.524.9900 / 215.957.0720(P) • 215.957.0729 (F)

www.Havis.com

KK-ST-FLIP-INST-6-07