

PARTS LIST

Vacuum Cleaner

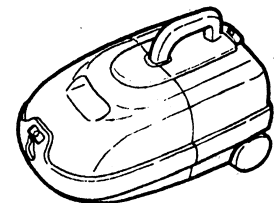
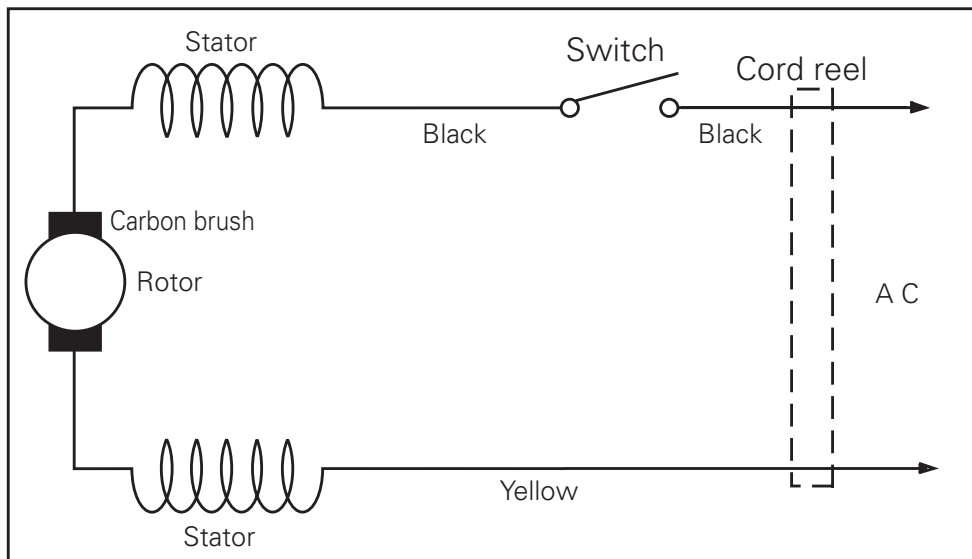
SC-30L (U.S.A.)

Specifications



| | |
|---------------------|---|
| Power source | : AC 120 V 60 Hz |
| Power consumption | : 8.5A |
| Motor revolution | : 32,600 r.p.m. |
| Vacuum | : 1,900 mmAq |
| Dimensions LXWXH | : 14 - 27/32" x 9 - 7/16" x 10 - 1/4" (377 x 240 x 260 mm) |
| Net weight | : 6 lbs. 6 ozs. (2.9 Kg) |
| Attachment | : Suction hose, Floor tool, Rotary bend, Connection pipe, Crevice tool, Upholstery brush, Toll storage |

PRODUCT CODE NO.
1 - 326 428 02 (L)

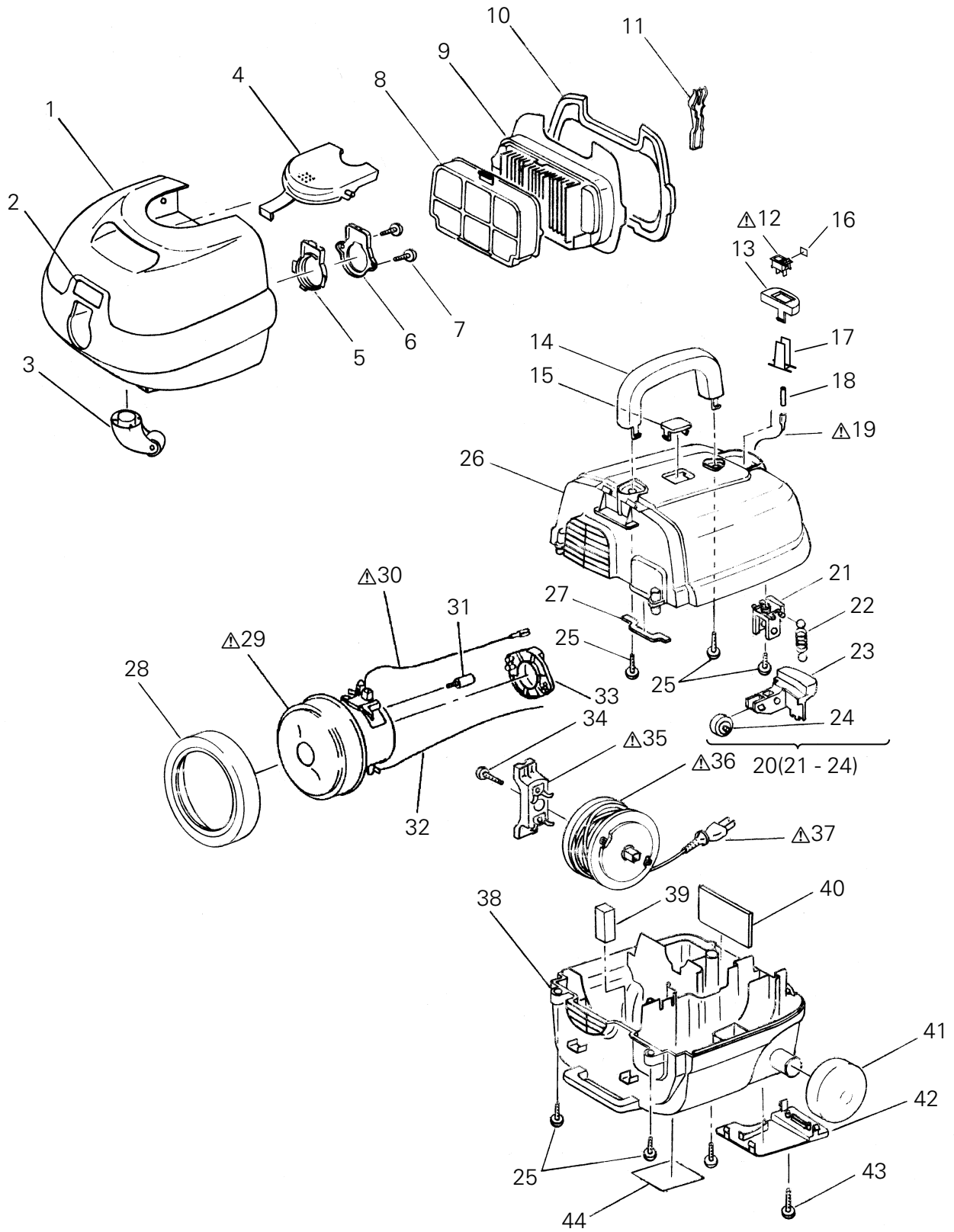
Wiring Diagram





**Exploded View
(Main unit)**

NOTE: The parts marked with  have special characteristics of safety,
if replace the  mark parts, use only SANYO specified parts.









SC-30L (U.S.A.)



**Parts List
(Main unit)**

NOTE: The parts marked with  have special characteristics of safety,
if replace the  mark parts,use only SANYO specified parts.

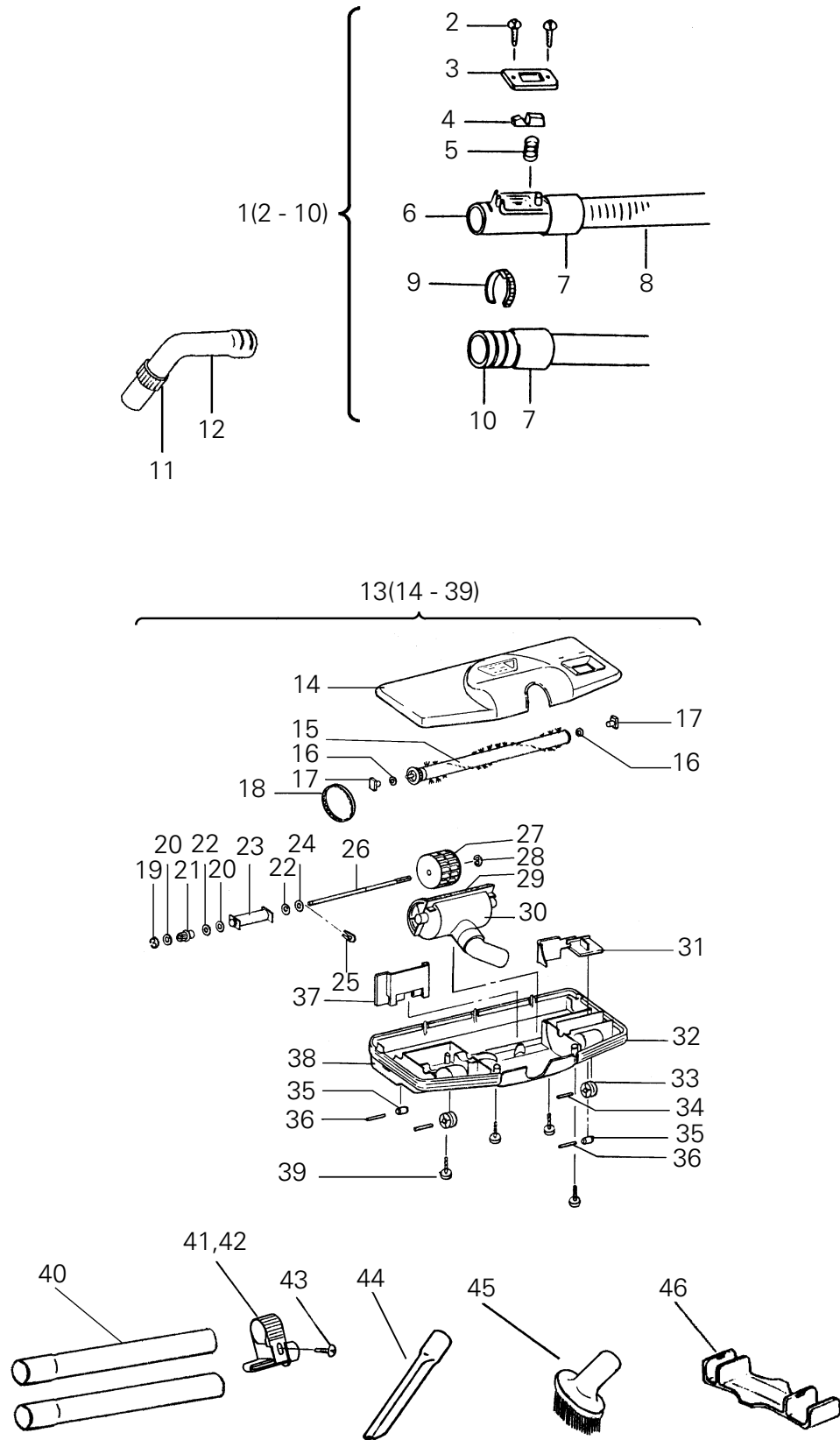
SC-30L (U.S.A.)

| Key No. | Parts No. | Description | Q'ty | Key No. | Parts No. | Description | Q'ty |
|---|--------------|-------------------------------------|-----------------------------|---------|-----------|-------------|------|
| 1 | 616 140 6781 | DUST BOX (B-473) | 1 | | | | |
| 2 | 616 131 1856 | DUST BOX INSCRIPTION (NN-B) | 1 | | | | |
| 3 | 616 000 1314 | CASTER (NN-B) | 1 | | | | |
| 4 | 616 140 6798 | CRAMP HOOK (B-474) | 1 | | | | |
| 5 | 616 004 5219 | AIR INLET PACKING (NN-B) | 1 | | | | |
| 6 | 616 004 5486 | AIR INLET FITTING | 1 | | | | |
| 7 | 411 006 8103 | SCR TPG PAN 4X16 | 2 | | | | |
| 8 | 616 103 8982 | PRE FILTER | 1 | | | | |
| 9 | 616 124 7100 | DUST FILTER ASSEMBLY | 1 | | | | |
| 10 | 616 125 0957 | DUST FILTER PACKING (NN-05) | 1 | | | | |
| 11 | 616 115 3081 | DUSTER ARM (NN-B) | 1 | | | | |
|  | 12 | 616 129 2391 | SWITCH | | | | |
| 13 | 616 140 6651 | SWITCH ORNAMENT (B-474) | 1 | | | | |
| 14 | 616 115 3043 | HANDLE (NN-B) | 1 | | | | |
| 15 | 616 140 6668 | CASE ORNAMENT (B-474) | 1 | | | | |
| 16 | 616 011 9422 | CAUTION LABEL | 1 | | | | |
| 17 | 616 140 6521 | SWITCH HOLDER | 1 | | | | |
| 18 | 616 129 2520 | VINYL TUBE (L=20) | 1 | | | | |
|  | 19 | 616 129 2537 | CORD ASSEMBLY (BLACK) L=280 | | | | |
| 20 | 616 140 6743 | BRAKE ROLLER ASSEMBLY A KEYNO.21-24 | 1 | | | | |
| 21 | 616 008 7554 | BRAKE ARM BRACKET (BR-20) | 1 | | | | |
| 22 | 616 008 7455 | BRAKE SPRING | 1 | | | | |
| 23 | 616 140 6750 | BRAKE ARM (B-474) | 1 | | | | |
| 24 | 616 002 1398 | BRAKE ROLLER ASSEMBLY B | 1 | | | | |
| 25 | 411 006 8301 | SCR TPG PAN 4X20 | 6 | | | | |
| 26 | 616 140 6767 | CASE UPPPER (B-474) | 1 | | | | |
| 27 | 616 103 8739 | POLYURETHANE FORM A | 1 | | | | |
| 28 | 616 103 0375 | MOTOR CUSHION FRONT (NN-B) | 1 | | | | |
|  | 29 | 616 125 0933 | MOTOR COMP. (AC 120V) | | | | |
|  | 616 111 3276 | CARBON BRUSH ASSEMBLY | 2 | | | | |
|  | 30 | 616 129 2544 | CORD ASSEMBLY (BLACK) L=350 | | | | |
| 31 | 616 010 5173 | SCREW | 1 | | | | |
| 32 | 616 103 3840 | LEAD WIRE (YELLOW) L=300 | 1 | | | | |
| 33 | 616 100 7094 | MOTOR CUSHION REAR | 1 | | | | |
| 34 | 411 007 0809 | SCR TPG TRS 4X16 | 1 | | | | |
|  | 35 | 616 002 0834 | REEL SUPPORTER ASSEMBLY | | | | |
|  | 36 | 616 125 0964 | CORD REEL COMP. INCL/P.CORD | | | | |
|  | 37 | 616 125 0971 | POWER CORD (U2) | | | | |
| 38 | 616 140 6682 | CASE LOWER (B-474) | 1 | | | | |
| 39 | 616 103 8821 | INDICATOR FILTER | 1 | | | | |
| 40 | 616 109 6234 | OUTLET FILTER | 1 | | | | |
| 41 | 616 103 8845 | WHEEL REAR (NN-B) | 2 | | | | |
| 42 | 616 140 6705 | CORD INLET COVER (B-474) | 1 | | | | |
| 43 | 411 067 5202 | SCR TPG PAN 3X20 | 1 | | | | |
| 44 | 616 140 6774 | NAME PLATE | 1 | | | | |

COLOR CODE:B-474(BLUE),BR-20(BROWN),NN-05(GRAY),NN-B(BLACK)

**Exploded View
(Attachment)**

SC-30L (U.S.A.)



**Parts List
(Attachment)**

SC-30L (U.S.A.)

| Key No. | Parts No. | Description | Q'ty | Key No. | Parts No. | Description | Q'ty |
|---------|--------------|----------------------------------|------|---------|-----------|-------------|------|
| 1 | 616 127 6827 | SUCTION HOSE COMP. KEYNO.2-10 | 1 | | | | |
| 2 | 411 067 8708 | SCR TPG PAN 3X8M | 2 | | | | |
| 3 | 616 115 3104 | HOSE HOOK COVER (NN-B) | 1 | | | | |
| 4 | 616 018 1184 | HOSE HOOK (NN-B) | 1 | | | | |
| 5 | 616 018 1283 | HOSE HOOK SPRING | 1 | | | | |
| 6 | 616 115 3111 | HOSE JOINT PIPE A (NN-B) | 1 | | | | |
| 7 | 616 103 9040 | SUCTION HOSE COVER (NN-B) | 2 | | | | |
| 8 | 616 123 4353 | SUCTION HOSE (NN-B) | 1 | | | | |
| 9 | 616 115 3128 | ROTARY BEND SET RING (NN-B) | 1 | | | | |
| 10 | 616 115 3135 | HOSE GRIP PIPE (NN-B) | 1 | | | | |
| 11 | 616 107 1668 | AIR SLIDE RING (NN-B) | 1 | | | | |
| 12 | 616 127 8920 | ROTARY BEND (NN-B) | 1 | | | | |
| 13 | 616 140 6804 | TURBINE BRUSH COMP. KEYNO.14-39 | 1 | | | | |
| 14 | 616 140 6811 | TURBINE BRUSH CASE(NN-B) | 1 | | | | |
| 15 | 616 015 5956 | AGITATOR ASSEMBLY | 1 | | | | |
| 16 | 616 010 4404 | WASHER 4.2X10X0.5 | 2 | | | | |
| 17 | 616 016 1841 | BRUSH BASE BEARING | 2 | | | | |
| 18 | 616 016 5627 | TIMING BELT | 1 | | | | |
| 19 | 411 001 0201 | RING E 5 | 1 | | | | |
| 20 | 411 091 3700 | WASHER Y 6.2X12X0.5 | 2 | | | | |
| 21 | 616 016 5542 | TURBINE FAN PULLEY | 1 | | | | |
| 22 | 616 010 4350 | WASHER 6.2X12X0.5 | 2 | | | | |
| 23 | 616 015 7967 | RESIN SLEEVE ASSEMBLY LARGE | 1 | | | | |
| 24 | 411 009 5505 | WASHER Z 6.2X12X0.5 | 1 | | | | |
| 25 | 411 001 1307 | RING U 5 | 1 | | | | |
| 26 | 616 016 5474 | TURBINE FAN SHAFT | 1 | | | | |
| 27 | 616 015 6359 | FAN ASSEMBLY | 1 | | | | |
| 28 | 411 001 0003 | RING E 4 | 1 | | | | |
| 29 | 616 016 0066 | POLYURETHANE FOAM | 2 | | | | |
| 30 | 616 140 6828 | ROTARY PIPE ASSEMBLY | 1 | | | | |
| 31 | 616 016 1278 | LEVER (NN-B) | 1 | | | | |
| 32 | 616 016 4934 | TURBINE BRUSH BUMPER | 1 | | | | |
| 33 | 616 091 8773 | WHEEL FRONT (NN-B) | 2 | | | | |
| 34 | 616 008 7486 | BRAKE SHAFT | 2 | | | | |
| 35 | 616 140 0420 | FLOOR TOOL ROLLER ASSEMBLY | 2 | | | | |
| 36 | 616 016 0141 | ROLLER SHAFT | 2 | | | | |
| 37 | 616 140 6835 | TURBINE INTAKE (NN-B) | 1 | | | | |
| 38 | 616 140 6842 | TURBINE BRUSH BASE(NN-B) | 1 | | | | |
| 39 | 411 006 8202 | SCR TPG PAN 4X20 | 4 | | | | |
| 40 | 616 132 9134 | CONNECTION PIPE (STAINLESS) | 2 | | | | |
| 41 | 616 107 8612 | PIPE RETAINER (NN-B) | 1 | | | | |
| 42 | 616 140 6859 | TAPE | 1 | | | | |
| 43 | 411 006 8301 | SCR TPG PAN 4X20 | 1 | | | | |
| 44 | 616 115 8147 | CREVICE TOOL (NN-B) | 1 | | | | |
| 45 | 616 017 3592 | UPHOLSTERY BRUSH ASSEMBLY (NN-B) | 1 | | | | |
| 46 | 616 140 6866 | TOOL STORAGE(B-474) | 1 | | | | |

COLOR CODE:B-474(BLUE),NN-B(BLACK)

For Parts or Service Contact
SANYO FISHER SERVICE CORPORATION.
 1411 West 190th Street Suite 700
 South Bay Corporate Center Gardena, CA 90248