



**USB VideoBus™
User Guide**



**F5U207u
F5U206
P72765**

I. Introduction

Capture live video into your computer via the USB port!

Thank you for purchasing the Belkin Components VideoBus™ Adapter. With the VideoBus™, you can connect your TV, VCR or camcorder to your computer, and capture images, or even make full motion movies! The VideoBus™ will accept any NTSC composite video input and convert it into PC-compatible digital video and image formats.

The Belkin Components® VideoBus™ is the ideal device to bring video and still images into your computer from various standard video sources via the USB port. The VideoBus™ enables unparalleled throughput of up to 30 frames per second, for CIF size color images, by using Belkin's advanced compression technology and software. This gives the user superior live video performance, while using minimal USB and CPU resources, leaving them available for other applications.

Live video captured using the VideoBus™ originating from the video camera, camcorder, VCR or TV tuner, fully complies with Video for Windows® standard and is compatible with most video and imaging applications for Microsoft® Win98® and Win95®. Video clips can be incorporated into programs such as Microsoft PowerPoint™, Word Perfect™ or Lotus Real-Time Notes™. You can also stay in touch using software packages such as Microsoft NetMeeting™ or White Pine CU-SeeMe™ to hold video conferencing sessions with your relatives, friends, customers or co-workers across the continent or across the ocean. The VideoBus™ also gives you the ability to create video E-mail messages using Zap! Mail™ or VideoLink Mail™ by Smith Micro Software®. Best yet, you can be a creative webmaster and incorporate onto your web site video clips or still images from family events or business meetings you captured on your camcorder.

Installation is a true Plug-and-Play experience. Install the included software drivers, plug in the VideoBus™ cable to your PC and attach your camcorder or any other video source to the VideoBus™ yellow RCA input jack. Now you are ready to begin capturing live video or creating amazing images!

FOR TECHNICAL SUPPORT ON THE MGI PHOTOSUITE OR VIDEOWAVE PROGRAMS, PLEASE CHECK MGI'S WEBSITE AT WWW.MGISOFT.COM

Belkin Components Lifetime Limited Warranty

Belkin Components warrants this product against defects in materials and workmanship for its **lifetime**. If a defect is discovered, Belkin will, at its option, repair or replace the product at no charge provided it is returned during the warranty period, with transportation charges prepaid, to the authorized Belkin dealer from whom you purchased the product. Proof of purchase may be required.

This warranty does not apply if the product has been damaged by accident, abuse, misuse, or misapplication; if the product has been modified without the written permission of Belkin; or if any Belkin serial number has been removed or defaced. The warranty and remedies set forth above are exclusive in lieu of all others, whether oral or written, expressed or implied. Belkin specifically disclaims any and all implied warranties, including, without limitation, warranties of merchantability and fitness for a particular purpose.

No Belkin dealer, agent, or employee is authorized to make any modification, extension, or addition to this warranty.

Belkin is not responsible for special, incidental, or consequential damages resulting from any breach of warranty, or under any legal theory, including but not limited to lost profits, downtime, goodwill, damage to or reprogramming, or reproducing any program or data stored in or used with Belkin products.

Some states do not allow the exclusion or limitation of incidental or consequential damages or exclusions of implied warranties, so the above limitations of exclusions may not apply to you. This warranty gives you specific legal rights, and you may also have other rights that vary from state to state.

DECLARATION OF CONFORMITY WITH FCC RULES FOR ELECTROMAGNETIC COMPATIBILITY

We, Belkin Components, of 501 West Walnut Street, Compton CA 90220, declare under our sole responsibility that the product, VideoBus™, F5U207u to which declaration relates, complies with Part 15 of the FCC Rules. Operation is subject to the following two conditions: (1) this device may not cause harmful interference, and (2) this device must accept any interference received, including interference that may cause undesired operation.

CE Declaration of Conformity

We, Belkin Components, declare under our sole responsibility that the VideoBus™, F5U207u, to which this declaration relates, is in conformity with Generic Emissions Standard EN50081-1 and with Generic Immunity Standard EN50082-1 1992.

© 1999 Belkin Components®

Compton CA 90220	Northampton, UK	Hoofddorp, Netherlands
(310) 898-1100 voice	44 (0) 160 4678300 voice	31 (0) 23 5698765 voice
(310) 898-1111 fax	44 (0) 160 4790658 fax	31 (0) 23 5612694 fax

12. In Win95 the setup program will then ask you to restart your computer, this is a necessary step. Win98 may not need restarting.
13. You may then proceed to installing the MGI PhotoSuite SE and/or MGI VideoWave SE+ software packages included in the CD-ROM.



The manuals are on the CD-ROM as PDF files.

- If you do not have Adobe Acrobat viewer, you must install Viewer. Double-click on My Computer, and with the VideoBus™ CD in the CD-ROM drive, double-click on the CD-ROM drive icon, then on Psuite. Double-click on Docs, then Pdf_View. Double-click on setup.exe to run the Acrobat installer.
- The manuals for PhotoSuite SE are in the Docs folder under Psuite. To get there, Double-click on My Computer, and with the VideoBus™ CD in the CD-ROM drive, double-click on the CD-ROM drive icon, then click on Psuite. Double-click on Docs and you will see all the manuals in different languages as separate PDF files. Simply double-click on the language of your preference.
- The manuals for VideoWave SE+ are in the Docs folder under Videowav. To get there, Double-click on My Computer, and with the VideoBus™ CD in the CD-ROM drive, double-click on the CD-ROM drive icon, then on Videowav. Double-click on Docs and you will see all the manuals in different languages as separate PDF files. Simply double-click on the language of your preference.

Benefits and Features

- Selectable USB bandwidth (0.5Mbps to 8.0Mbps in 0.5Mbps steps)
- Low CPU processing power consumption video de-compression
- Supports high resolution still image capture (640x480 pixels)
- Direct connection to USB port
- No need to open the computer to install or configure cards
- Video for Windows® compatible
- Converts video source into a standard Video for Windows® device
- Compatible with popular PC imaging applications
- Plug-and-Play installation
- No power supply needed – VideoBus™ is powered by the USB connection

System Requirements

- PC with 166Mhz Pentium processor with MMX or higher and USB port
- Microsoft Win®98 or Win®95 version 4.00.95 or higher
- 16MB RAM
- 20MB hard disk storage space
- Floppy drive for software installation

Applications

- Video conferencing via Internet, PSTN (public switched telephone network), ISDN and LAN/WAN
- Multimedia and desktop applications
- Video and still capture
- Video input for security systems
- Video E-mail messages
- Website development

Package Contents

VideoBus™ Adapter	F5U207u or F5U206
CD-ROM	P72766
This manual	P72765
Registration Card	P72009

II. VideoBus™ Installation

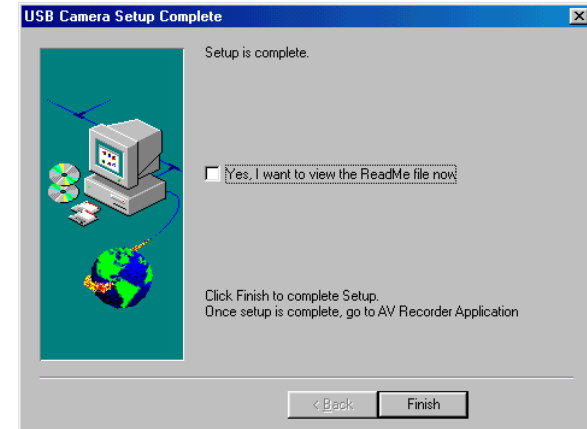
1. Make sure to close all Windows programs before installing the VideoBus™ software. **Do not plug in the VideoBus™ until you are prompted by the software installation program.**
2. Open your CD-ROM drive and place the VideoBus™ CD on the tray. Close the drive by pressing the eject button. The following screen will come up automatically. **If you want to cancel the installation, press the Escape key.**



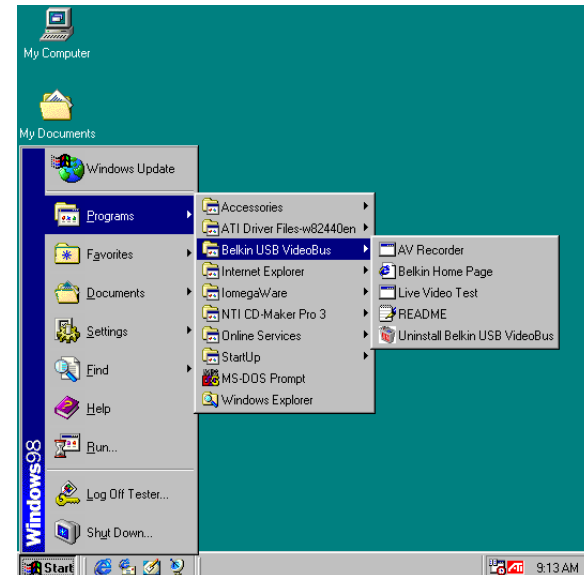
If it does not come up, click on the Start button found on the bottom left corner of your screen. Scroll up and click on Run. In the Run window, type d:\setup.exe and then click OK, where d: is the drive letter of your CD-ROM drive.

3. Click on the Belkin VideoBus™ button to install the drivers.

10. After you return to the installation, you will be prompted to finish the installation. Click Finish.



11. After installing the VideoBus™ drivers, the setup program will install a program group in your Start menu:



If you are not getting an acceptable signal, see below for more information.

PAL Video Users:

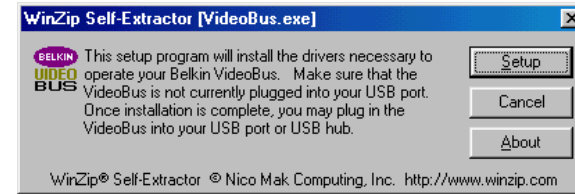
If you get a black and white image in the window, you are using a PAL-system video source. You must configure the software in order to get full color capability. To do this, click on Options to get to the Video Settings screen. In Camera Video System, make sure PAL is selected.

S-Video Users:

If you are using the S-Video input of your VideoBus™ (if equipped), make sure that S_Video is selected in the Video Source box as shown in the Video Settings screen. Otherwise, C_Video must be selected for standard composite (RCA) video input.



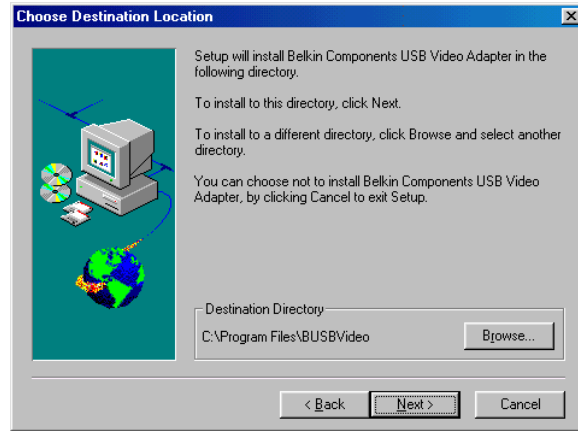
4. Click on the Setup button in the WinZip Self-Extractor window. The WinZip Self-Extractor will then unzip the VideoBus™ installation files.



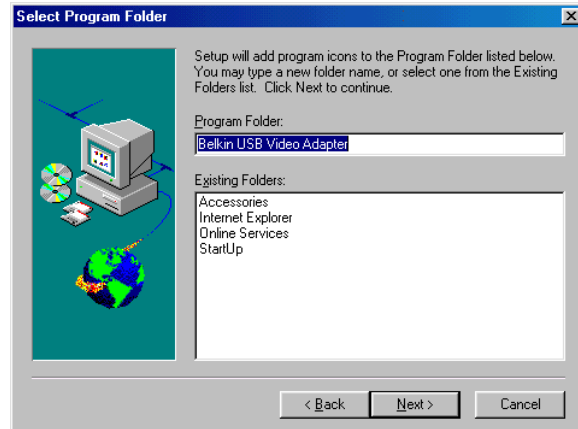
5. The Setup window recommends that you exit all Windows programs before running setup and installing the VideoBus™ software. You should have already done this in step #1. If any Windows® programs are still running, cancel out of the installation and close all Windows programs. Then go back to step #3 and proceed with the VideoBus™ installation. If all Windows® programs have been closed, click Next in the Setup window.



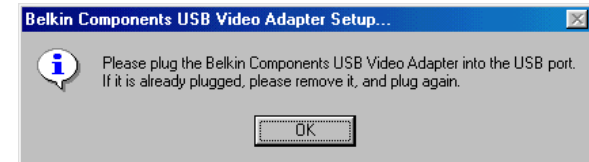
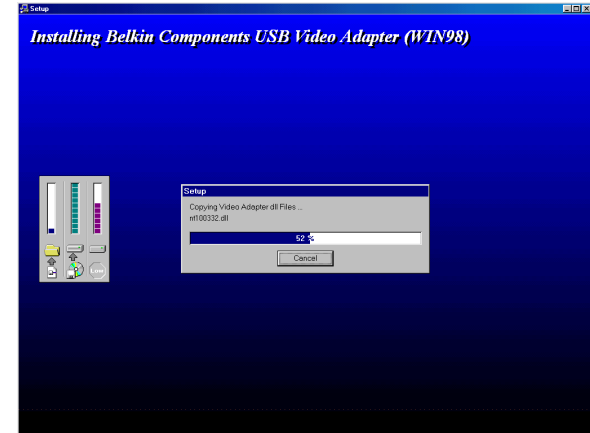
6. The Choose Destination Location window automatically selects the directory where the VideoBus™ will be installed. This default is the recommended directory. Click Next.



7. The Select Program Folder window will automatically select the correct folder for the VideoBus™. This default is the recommended folder. Click Next.



8. After the setup program runs the installation, you will be asked to connect the VideoBus™ to a free USB port on your PC. Connect the VideoBus™ at this time and then click OK. The necessary software for the VideoBus™ hardware will be automatically installed.



9. The Live Video Test window will prompt you to conduct a video test to determine if the VideoBus™ is functioning properly. Connect a video device to the VideoBus™. If there is an S-Video connector on your VideoBus™, it is recommended that you use that (if your video source has S-Video output). See the next page for details on selecting the proper input connector in the software. Otherwise, connect your video source to the yellow RCA jack (Composite video).

Once an image appears on your PC screen in the VideoBus™ Test window, you may exit the live video test. Click Exit.