

INTRODUCTION

! Before using the light, please read this manual and the attached "NiMH Batteries" thoroughly, and keep them for future reference.

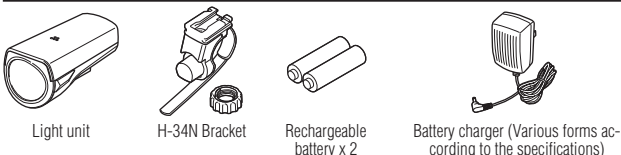
⚠ FOR SAFE OPERATION

- Do not place it within children's reach.
- In preparation for unexpected battery shutoff, we recommend you carry a spare battery.
- If the light unit or parts become dirty with mud, etc., clean with a soft cloth which is moistened with mild soap. Never apply paint thinner, benzine or alcohol; damage will result.
- Mount the light unit more than 10 cm away from the wireless meter. When it is mounted too close, the transmission may be affected adversely.
- This product has waterproof features that allow you to use it in light rain (ANSI/NEMA FL1). Do not use it in heavy rain.
- Operate the switch after you stop your bicycle.

! Before Initial Use

The rechargeable battery supplied is charged enough to check the light. Be sure to install it to the light and charge it before use, according to the instructions "How to charge."

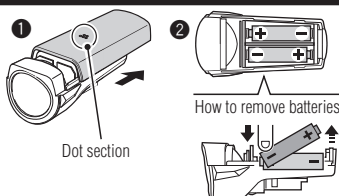
COMPONENTS



HOW TO INSTALL BATTERY

In place of rechargeable batteries, AA batteries can be used for this light.

- 1 Slide the cover backward, while pressing down the dot section on the top of the unit.
- 2 Replace batteries according to the marks on the unit, and replace the cover.



CAUTION!

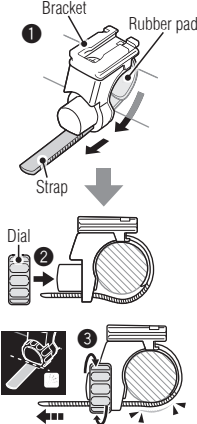
- Do not use a dry battery (primary battery) together with a rechargeable battery.
- Do not use a new battery in combination with an old battery.
- Be sure to install batteries in the correct direction.
- Remove and store batteries when you will not use the light for a long period of time. Otherwise, batteries may leak liquid, which may result in failure.

HOW TO MOUNT

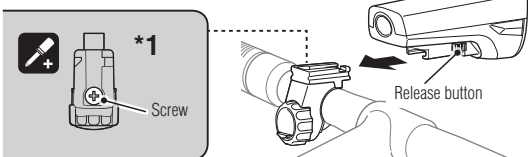
- 1 Wind the bracket strap around the handlebar, and put the strap through the opening.
 - 2 Screw the dial into the bracket to secure it temporarily.
* Insert the light unit to the bracket until it clicks, and adjust the beam angle. (Refer to "HOW TO MOUNT THE LIGHT")
 - 3 Securely tighten the dial, and cut off any excess bracket strap.
- * To remove the light unit, pull out it forward while pressing the button.
- * To re-adjust the beam angle, loosen the dial enough to move the bracket, and securely tighten it after adjustment.

CAUTION!

- Be sure to tighten the dial by hand. When you tighten it too hard with a tool, the screw thread may be stripped.
- Check the dial and screw (*1) on the bracket periodically, and use them without any loosening.
- Round off the cut edge of the bracket strap to prevent injury.



HOW TO MOUNT THE LIGHT



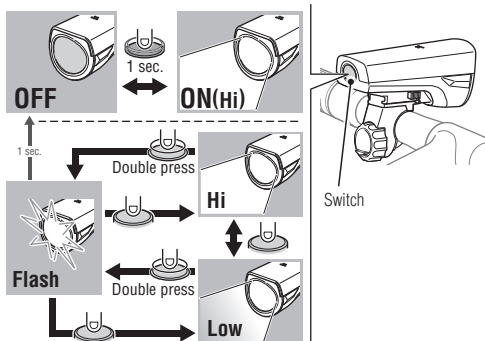
HOW TO USE

1 Lighting (lighting pattern selection)

The ON/OFF and lighting pattern are selected using a switch.

Switch	Standard continuous lighting time
ON ↔ OFF : Long press	Hi : About 9 hours
Hi ↔ Low : Single press	Low : About 20 hours
Flash : Quick double press	Flash : About 80 hours

* When returning from Flash to ON (Hi or Low), it returns to the ON mode used previously.



Remaining battery capacity

When the switch (indicator) lights up red, the battery is almost shutoff. Charge or replace the battery as soon as possible.

2 How to charge

DANGER!!!

- Do not to charge when dry batteries are installed.
- Be sure to use CatEye rechargeable battery and battery charger. The battery charger is indoor use only.
- Commercially available rechargeable batteries should be charged with a compatible battery charger.

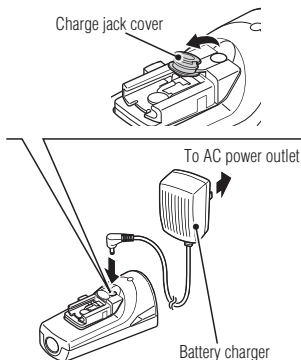
- 1 Open the charge jack cover at the back of the light unit to connect the battery charger plug.
- 2 Plug the battery charger to an AC outlet. When the switch (indicator) lights up red, charging starts.

* When the switch flashes red, it indicates a charge error. Disconnect the plug, and charge again.

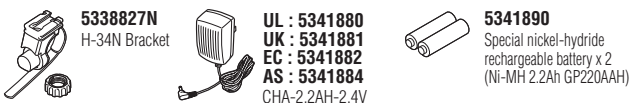
- 3 When the switch red light turns off, charging is completed. Remove the plug, and close the charge jack cover.

Switch (indicator) state	Standard charging time
ON : Charging OFF : Charging is completed	Approx. 8 hours
Flash : Charge error	

* Charging and lighting times are approximate values, and will vary by environmental and user conditions.



SPARE PARTS



SPECIFICATIONS

Light source	Phi-5 white LED x 1
Battery	AA Ni-MH 2.2Ah (GP220AAH) rechargeable battery x 2, or AA alkaline battery x 2
Battery charger	CHA-2.2AH-2.4V (Only the rechargeable batteries supplied can be used.)
Operating time (Alkaline battery)	Hi : Approx. 9 hours (Approx. 7 hours), Low : Approx. 20 hours (Approx. 20 hours), Flash : Approx. 80 hours (Approx. 100 hours)
Standard charging time	Approx. 9 hours
Temperature range	Charging : 41°F - 104°F (5°C - 40°C) Operating : 14°F - 104°F (-10°C - 40°C)
Recharge/discharge number of times	About 300 times (until the rated capacity drops to 50%)
Dimensions/weight	4-7/32" x 2-7/64" x 1-59/64" (107 x 53.5 x 49 mm) / 4.87 oz (138 g) (Including rechargeable batteries supplied)

* The specifications and design are subject to change without notice.

LIMITED WARRANTY

2-year Warranty: Light unit / Battery charger (Deterioration of the battery is excluded.)

CatEye products are warranted to be free of defects from materials and workmanship for a period of 2 years from original purchase. If the product fails to work during normal use, CatEye will repair or replace the defect at no charge. Service must be performed by CatEye or an authorized retailer. To return the product, pack it carefully and enclose the warranty certificate (proof of purchase) with instruction for repair. Please write or type your name and address clearly on the warranty certificate. Insurance, handling and transportation charges to CatEye shall be borne by person desiring service. For UK and REPUBLIC OF IRELAND consumers, please return to the place of purchase. This does not affect your statutory rights.

CATEYE CO., LTD.

2-8-25, Kuwazu, Higashi Sumiyoshi-ku, Osaka 546-0041 Japan
 CATEYE Service and Research Center
 Attn: CATEYE Customer Service Section
 Phone : (06)6719-6863
 Fax : (06)6719-6033
 E-mail : support@cateye.co.jp
 URL : http://www.cateye.co.jp

Service & Research Address for USA
 CATEYE Service and Research Center
 1705 14th St. 115 Boulder, CO 80302
 Phone : 303.443.4595
 Toll Free : 800.5CATEYE
 Fax : 303.473.0006
 E-mail : service@cateye.com
 URL : http://www.cateye.com