

Setup Guide



The world's first and only fully-integrated, PC-based, Professional Digital Video Security System designed for small business and home application.

Use this guide to set up the following Pro products:

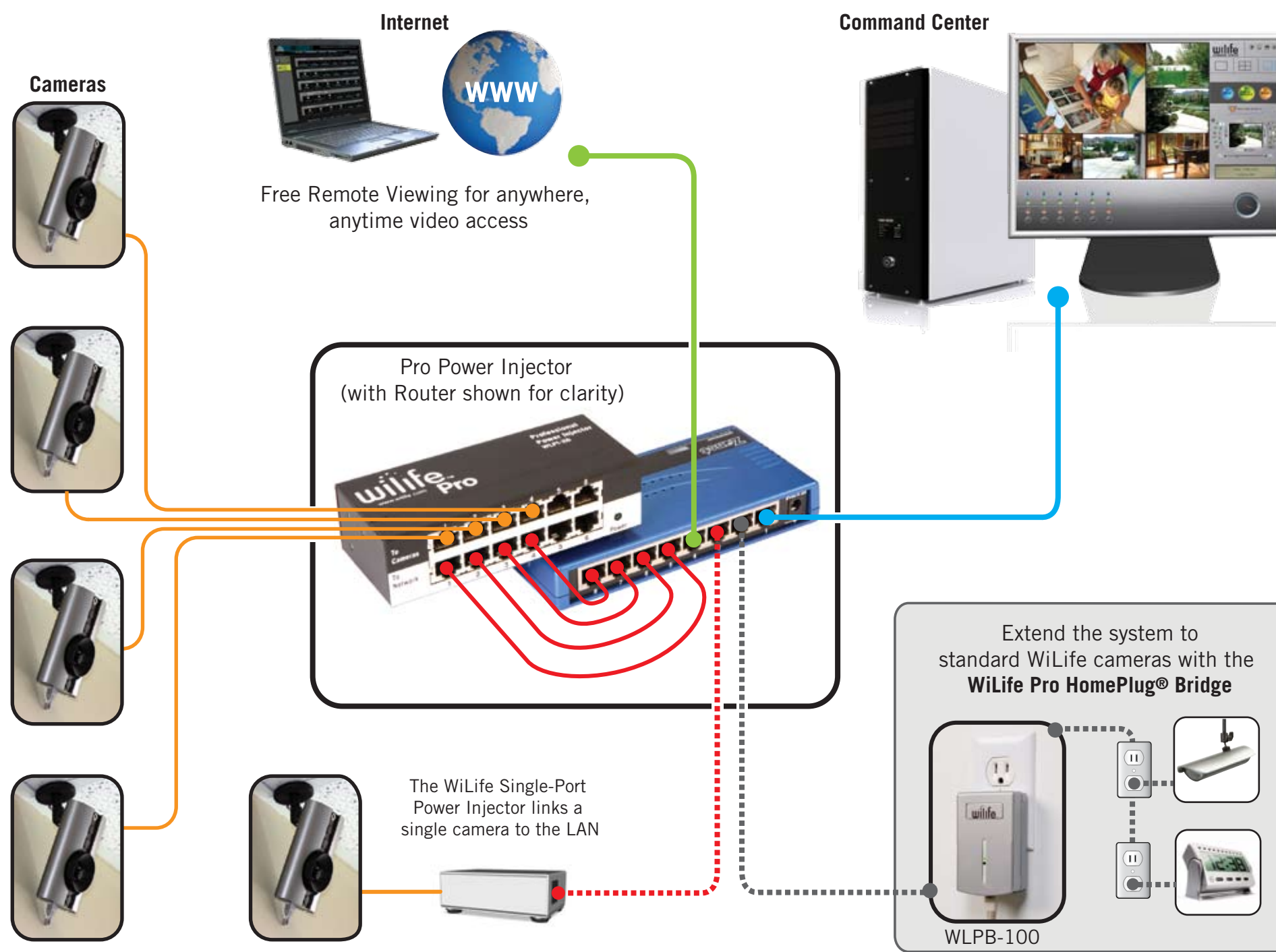
KITS

- Four-Camera Master System with Command Center Software WLPIC-4X6
- Single-Camera Master System with Command Center Software WLPIC-1X6
- Six-Camera Master System with Command Center Software WLPIC-6X6
- Indoor Camera with Single-Port Injector Kit WLPIC-1X1

Components

- Indoor Digital Camera Kit WLPIC-810i
- Six-Port Power Injector with Command Center Software WLPIC-X6

This setup guide will assist you in installing and setting up the WiLife Pro digital video security system. Simply follow these instructions and you will be up and running fast.



Pro Install Notes and Cautions

- Take the time to carefully place and hide your cables. We have included a thin silver cable and cable coupler to help you create an attractive install.
 - If you move cameras from one system to another, you should always reset the cameras using a paperclip.
 - Having problems discovering cameras. Follow these steps:
 1. Verify the injector and camera have power.
 2. Ensure all cables are connected and tested.
 3. Confirm that the camera has received an IP address from the network. When the camera is searching for an address, all three status LEDs will flash in unison. Once it has received an address, the bottom LED will show solid.
 4. Use Setup...Advanced...Find My Cameras to search for cameras.
- Find more helpful information at www.wilife.com/support.
- Check camera focus to ensure best image results. Use WiLife 120° and 54° lenses to better target specific areas.
 - Use a WiLife NightVision kit to add support for capturing video in complete darkness.
 - Check the WiLife Command Center help file (F1) for more assistance on configuring PC Firewalls.

Specifications	
Operating Temperature	32° F to 92° F (0° C to 34° C)
Operating Humidity	Up to 90%, non-condensing
Operating Environment	Indoor - protected from water and dust
Cabling	CAT5e with RJ-45 connectors per IEEE 802.3
Lighting	2 lux Standard, 0 lux with WiLife NightVision kit
Camera Resolution	640 X 480 and 320 X 240 - user selectable
Network Bandwidth	300 kbps to 800 kbps - user selectable
Frame Rate	15, 10, and 5 FPS - user selectable

Before You Get Started

A. Ensure the PC meets these system requirements:

Requirement	Number of Cameras					
	1	2	3	4	5	6
CPU Speed*	2.2 GHz	2.4 GHz	2.6 GHz	2.8 GHz	3.0 GHz	3.2 GHz
Memory (MB)**	512	512	512	768	1024	1024
Video Card (MB)	32	32	64	128	128	256
Display Resolution	1024 X 768 or higher, 32 bit color					
Hard Drive (MB)	150 MB for program and a minimum of 10 GB for video storage					
Operating System	Microsoft® Windows® XP or Microsoft Vista™					
Media Player	Microsoft® Windows® Media Player version 9 or later					

* Intel® Pentium 4 CPU speed. Dual-core Intel and AMD processors deliver similar performance at lower clock speeds.

**Microsoft Vista requires more memory to deliver equal performance.

B. Test Internet connection speeds for remote viewing and e-mail & cell phone alerts:

Feature	Internet Bandwidth Requirement
E-mail & Cell Phone Alerts	Upload at 64 Kbps (ISDN, DSL, Cable) with always-on link.
Remote Viewing	Upload at 128 Kbps (DSL, Cable) with always-on link.

Test upload speeds using one of many online speed test sites. We recommend www.speedtest.net or www.speakeasy.net.

C. Use CAT5e or CAT6 cable only. Validate hand-built cables using a professional cable tester. All cables pairs (1/2, 3/6, 4/5, 7/8) must be sound.

WARNING: Mis-connected cables may cause damage to either your cameras or network equipment.

D. Gather the following setup information:

- E-mail address (to be used as WiLife Online account user name) and password.
- E-mail (SMTP) server, user name, and password for set up of e-mail and cell phone alerts.

Step 1 Set up Power Injector & Cameras

The WiLife Pro Power Injector delivers power over the Ethernet lines to each WiLife Pro Camera.

- Connect the WiLife Pro Injector power supply. Consider using a UPS to protect against brief power outages.
- Connect one patch cable (provided with camera) for each camera from the LAN to the "To Network" injector ports 1 through 6.
- Connect WiLife Pro Cameras to injector "To Camera" ports, using the same ports connected to LAN.

By default, the cameras will search for an IP address using DHCP. While the cameras are searching for an IP address, all three status LEDs will flash. When the camera has obtained an address, the bottom status LED shows solid.

You can now proceed to **step 2**.

Using Fixed IP Addresses (Advanced)

Use DHCP whenever possible. But, if you must assign static IP addresses, follow these instructions:

- Copy the WiLifeSetIPAddress EXE and PDF to the PC hard drive. The files are located on the WiLife CD in the **bin** directory.
- Run the **WiLifeSetIPAddress** program, first ensuring the WiLife Command Center is not running.



- Select the LAN Network Card and click Start to search for your cameras.
- Enter the IP addresses and click Set to write the address to the cameras.
- You can get additional information by reading the **WiLifeSetIPAddress** PDF.

Step 2 Install WiLife Software from CD

The WiLife Command Center Software turns a standard PC into a powerful video security control station.

- To install the software, ensure you are logged in as Administrator.
- The installation process takes several minutes and includes powerful tools like Microsoft .NET 2.0, UPnP, and Intel IPP.
- You are required to reboot the machine after the install to ensure the drivers are properly recognized by Windows.

Step 3 Complete First Run Wizard

The wizard automatically runs as you start the Command Center for the first time. It walks you through the initial setup of system options and configuration of your cameras.

- Create a new account or use an existing account for WiLife Online access.



- Select the WiLife Pro Power Injector networking option.



Step 4 Confirm Online Direct Connect

There are two methods for connecting to the WiLife Online servers - **direct and relay**. Direct mode is the best.

- In **relay mode**, video is relayed through WiLife servers, avoiding router and firewall setup - but, it includes limits on viewing time.
- In **direct mode**, video is routed directly to remote viewing clients, enabling unlimited viewing time and faster connections.

By default, WiLife will automatically attempt to configure the local router and firewall to enable Direct connections using UPnP. In most cases, it is successful.

To verify that WiLife was able to configure your router, open the **Setup...Online** tab in the Command Center and look for the connection mode. If it reads **Direct Mode**, you are done.



Follow these steps to manually configure your system for Direct Connections:

- Enable UPnP on your firewall or router, if possible or ...
- On your router, map ports 20570 to 20572 (TCP) to the computer's IP address. You may find the site www.portforward.com helpful.
- Restart the WiLife Command Center and recheck the Online Status.

You can find additional information in the WiLife Support online knowledgebase at www.wilife.com/support.

Most Popular WiLife Features

1 Changing Screen Views in WiLife



There are two main screens in the WiLife Command Center software, Live and Playback. Click the GO TO PLAYBACK button to open the Playback screen. Click the GO TO LIVE button to go back to the Live View screen.

The SETUP button opens the Setup dialog screens that allow you to modify settings for your cameras.

The WiLife button opens www.wilife.com.

2 Automatic Recording

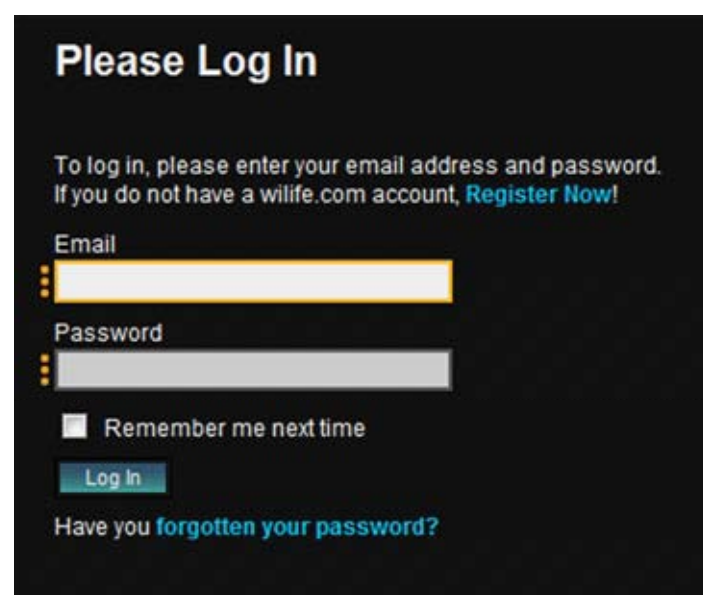


WiLife automatically records video when cameras detect motion.

Recorded video segments are saved as .wmv files on your pc's hard drive.

You can find and play back the recorded video segments on the Playback screen.

8 Remote Viewing by PC



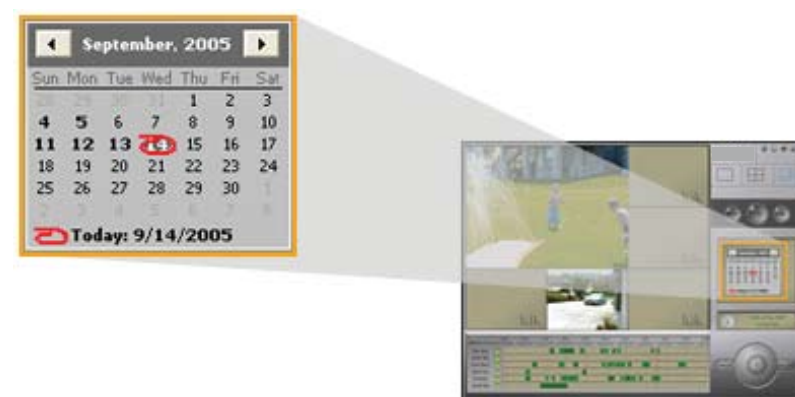
Log into WiLife Online at online.wilife.com and you can access live video from your cameras anywhere in the world, at any time. WiLife automatically determines your system's firewall settings and Internet capability in order to stream video to you in the most direct way possible. If WiLife cannot find a direct path, we send the video through our own WiLife servers to you. Now that's hassle free service!



3 View Recorded Video Clips



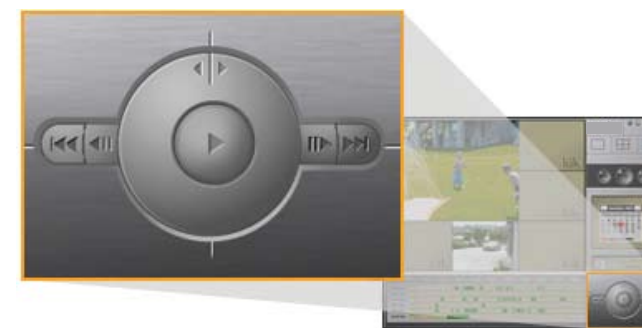
The Video Timeline window provides fast access to recorded video segments using the mouse or keyboard. Each camera has a row on the screen. Each recorded segment is displayed as a green bar. A vertical red line shows the current position of playback.



The Calendar shows you days that cameras recorded video. The current day is circled in red. Days in which video segments were recorded appear in bold. You can click on any of those days to display all of the video segments in the timeline. The Calendar has arrow buttons at the top to navigate forward or backward through the months.

4 Using the Playback Controls

Like any DVD player, the Playback Controls allow you to play, pause, adjust speed, and step-through your video segments. You use the controls by clicking on each one. If you hold your mouse over the control, Windows will display a tool tip, indicating the name of each control.



5 Email and Cell Phone Alerts

Receive email and cell phone alerts (messages) when a camera detects motion.

You have the option of receiving one of three message types:

- simple text-only
- text and one frame of video, or
- a video clip.

Go to Setup > Email to set up and activate e-mail and cell phone alerts.



6 Using Motion Detection Zones

By default, each camera automatically records video anytime it detects motion. However, WiLife Cameras also allow you to change from "entire image" motion detection to individually defined zones. In fact, you can set up to 16 distinct motion detection regions. This is useful, for example, if you want to monitor a parking lot and eliminate the detection of traffic along the road.



The settings that you have the ability to control include:

- Turning on/off motion detection
- Setting the motion sensitivity level
- Setting up to 16 detection zones
- Activating the entire image as one detection zone

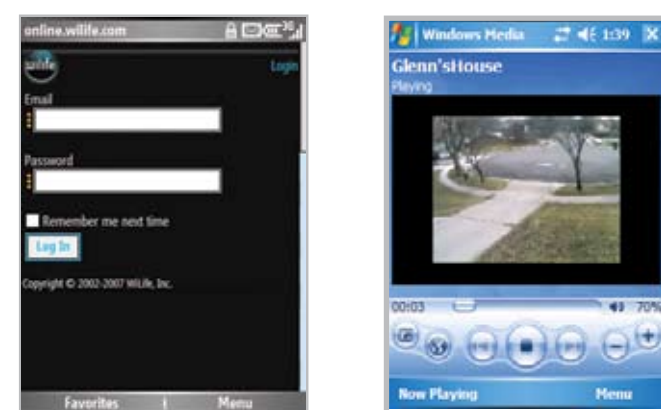
Motion detection functionality can be set up in the Setup > Recording tab screen.

7 Easily Add More Cameras

You can have up to a total of six WiLife Cameras on your system, allowing you to cover the entire property. Additional cameras can be purchased in the Easy Add-on camera kits for the Indoor, Outdoor, or Spy cameras. Adding new cameras is a simple three-step process:

1. Have your WiLife Software system running.
2. Position the camera on a window, desktop, or wall (using the mounting options available) and connect to the WiLife Power Supply.
3. If you set a custom password, click Setup > Advanced and click Find My Cameras. It will take WiLife 1 to 2 minutes to locate the camera.

9 Remote Viewing by Cell Phones



Using a Windows Mobile® enabled wireless PDAs or cell phones, log into WiLife Online at online.wilife.com and you can access live video from your cameras anywhere in the world, at any time.

WiLife automatically determines your phone's bandwidth in order to stream video to you in the most direct way possible. If WiLife cannot find a direct path, we send the video through our own WiLife servers to you. Now that's hassle free service!

11 Upgrade to WiLife Platinum



Upgrade to WiLife Platinum™ and expand your already powerful WiLife Video Security System™ with enhanced monitoring, remote play back, digital pan-tilt-zoom, scheduled alerts, and online video storage.

Adding the advanced capabilities of WiLife Platinum gives you more power and flexibility to protect your property, family, and employees — providing you with the ultimate in video security. Learn more at online.wilife.com.

10 Online System & Camera Updates

Update Camera Firmware					
This utility sends new programming information to your cameras. By default, the newest firmware version for each camera is selected, and all cameras needing an update are selected.					
Once you click the Update button, it is important not to interrupt this process until it is complete.					
Num	Camera Name	Camera Type	Current Version	New Version	Status
1	Engineering	WiLife Indoor Camera	2.17	2.19	Programming, 2%
2	Lower Entry	WiLife Indoor Camera	2.17	2.19	Programming, 2%
3	Lower West	WiLife Indoor Camera	2.17	2.19	Programming, 2%
4	Midway	WiLife Indoor Camera	2.17	2.19	Programming, 2%
5	Upper East	WiLife Indoor Camera	2.17	2.19	Transferring, 98%
6	Upper West	WiLife Indoor Camera	2.17	2.19	Transferring, 71%

WiLife will automatically check the software version dates and prompt you to download the latest version. Go to Setup > Advanced and click on Update Camera to accomplish this.

Summary of Limited Product Warranty

WiLife, Inc. warrants the original purchaser that its hardware will be free from physical defects in material and workmanship for a period of one (1) year from date of purchase. The warranty does not cover damage from shipment, storage, accident, abuse or misuse, or if it has been used or maintained in a manner not conforming to product's instructions or applicable laws and regulations. THE COMPLETE LIMITED WARRANTY ACCESSIBLE THROUGH THE INTERNET LINK PROVIDED IS THE SOLE AND ENTIRE WARRANTY PERTAINING TO THE PRODUCT AND IS PROVIDED IN LIEU OF AND EXCLUDES ALL OTHER WARRANTIES, EXPRESS, IMPLIED OR ARISING BY OPERATION OF LAW, INCLUDING, BUT NOT LIMITED TO ANY IMPLIED WARRANTIES OF MERCHANTABILITY OR FITNESS FOR A PARTICULAR PURPOSE. THIS WARRANTY DOES NOT APPLY TO INCIDENTAL OR CONSEQUENTIAL DAMAGES INCLUDING WITHOUT LIMITATION LOSS OF LIFE, INJURY, OR LOSS OF OR DAMAGE TO PROPERTY. IN NO EVENT SHALL WILIFE'S LIABILITY RESULTING FROM THE USE OF THE HARDWARE AND/OR SOFTWARE EXCEED THE PRICE PAID FOR THE PRODUCT. WILIFE OFFERS NO REFUNDS FOR ITS PRODUCTS, ONLY REPAIR OR REPLACEMENT. Some states do not allow the exclusion or limitation of incidental or consequential damages so the above limitation or exclusion may not apply to you.

To ensure complete warranty coverage, follow these steps:

- Review the complete Limited Warranty at www.wilife.com/support/warranty
- Register during the WiLife installation or at www.wilife.com/register
- Keep copies of your purchase receipts as proof of date of purchase.
- Carefully review the End-User License Agreement for the WiLife software.
- Contact WiLife customer support with any questions.