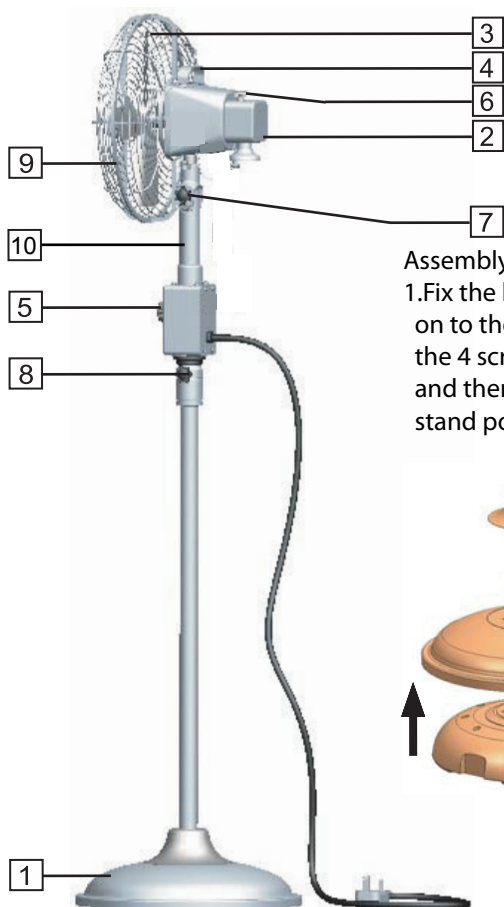


Pedestal fan

Thank you for purchasing this pedestal fan. Please read the instructions and warnings carefully before using to ensure safe and satisfactory operation of this product. Please retain this information for future reference.

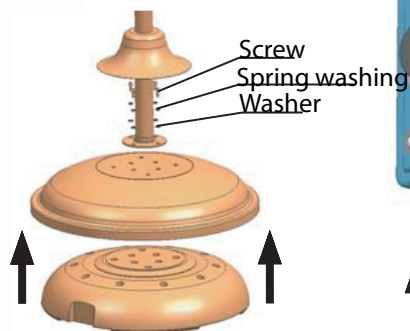
Appliance components

- | | |
|-----------------------|--------------------|
| 1. Pedestal | 7. Angle setting |
| 2. Motor head | 8. Adjustment knob |
| 3. Fan blades | 9. Securing screw |
| 4. Carry handle | 10. Neck |
| 5. Speed controller | |
| 6. Oscillation button | |

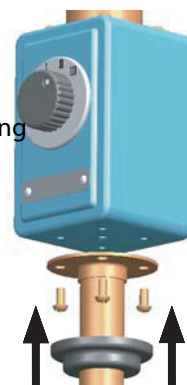


Assembly

1. Fix the lower stand pole on to the base by use of the 4 screws provided, and then pit the upper stand pole.



2. Fix the air volume regulator on top of the upper stand pole by the 4 screws provided.



Operation

The fan needs to be self-assembled, please refer to assembly section.

The fan comes with three different speeds.

Switch the fan on by turning the speed controller (5) back to 1, 2, 3.

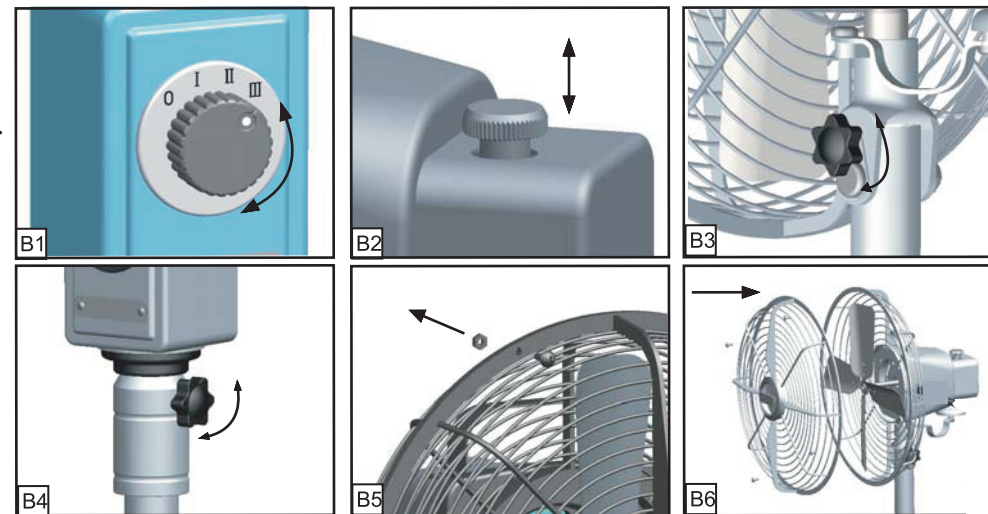
To switch the fan off, turn speed controller (5) back to 0 (B1).

The fan comes with an additional oscillation function. Turn the oscillation function on by pushing the oscillation button (6) down (B2).

Turn the oscillation function off by pulling the oscillation button (6) up (B2).

To change the angle of the fan, loosen the angle adjuster (7), then tilt the protective screen up or down and finally retighten the angle adjuster (7) (B3).

The fan height can be adjusted by loosening the adjustment knob (8), Please hold the neck (10) while doing so.



Cleaning and care

Unplug the appliance before cleaning. Don't use any water for cleaning metal surfaces. Slightly moisten a cloth and then wipe off the surfaces of the fan. In order to remove the dust from the protective screen, use a vacuum cleaner or remove the front protective screen by removing (B5) the securing screw (9) on the edge of the screen with a screwdriver (B5). After cleaning, the safety screen must be remounted (B6). After doing this, fasten the securing screw (9) on the edge of the protective screen.

Never immerse the fan in water.

This appliance complies with both the low voltage and electromagnetic compatibility directives. Its construction complies with current safety standards. We reserve the right to make technical changes without prior notice.

Disposal

The packaging of your new fan has a recycle mark on it. Please dispose of it as recycled paper or by using the "Dual System". This product should not be treated as normal household waste. It should be recycled, so please take it to an approved collection facility.



Please recycle

Technical data

Model No.
85573601, 85573602
Nominal power in watts: max. 42
Voltage, frequency: 240V / 50Hz
Fan blade diameter in mm: 300

Warning

1. Do not touch the fan with hand or hard object before the fan stops moving.
2. Never adjust or rotate the fan while in operation.

UK guarantee

For 3 years in respect of defects found to be due to faulty workmanship or material. Proof of purchase is required for validity of the guarantee. This guarantee is no longer valid if the damage has been caused by fall, alteration or repair by any unauthorised persons.

This guarantee in no way affects your statutory rights.



John Lewis Partnership
171 Victoria Street
London SW1E 5NN
www.johnlewis.com

85573601, 85573602

Pedestal fan

Instruction manual



John Lewis