



# FlexScan® T565

45 cm (17 inch) Class Color Monitor

Featuring a fine aperture grill pitch, high resolution display capability, and an upgraded Fine Contrast function to fully leverage the 300 cd/m<sup>2</sup> brightness capability of the CRT, the FlexScan T565 offers customization for just about any type of application. The result is pinpoint text and rich colors for spreadsheet applications, web page design, image editing, and more comfortable viewing of streaming video and DVDs.

## Features:

- Fine 0.25 mm aperture grill pitch.
- Recommended resolution of 1280 × 1024 at 89 Hz.
- Flat tension mask CRT with maximum brightness of 300 cd/m<sup>2</sup>.
- Enhanced Fine Contrast function with Text, Browser, Picture, Graphic, Movie, and sRGB modes.
- Dual input terminals for simultaneous connection of two computers.
- ECO Circle 2000 and TCO'99 Compliance.



# FlexScan® T565

45 cm (17 inch) Class Color Monitor



## High Brightness CRT

The FlexScan T565 features a new flat aperture grill CRT with an exceptionally high maximum brightness of 300 cd/m, perfect for DVD and streaming video playback.

## Fine Contrast

EIZO has updated this feature so that it now includes user selectable Text, Browser, Picture, Graphic, Movie, and sRGB modes. With each mode offering different brightness, sharpness, and color temperature settings, customizing the display for almost any application has never been easier.

## sRGB Color Space Support

With the Fine Contrast function's RGB mode, the FlexScan T565 can achieve color matching with software and other peripheral devices including scanners, printers, and digital cameras that also support the sRGB color space.

## Window Movie Mode

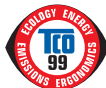
The brightness levels of the foreground and background windows can be adjusted independently for more comfortable viewing of DVD, streaming video, and other animated images. (Windows 98 SE/Windows Me/Windows 2000 only.)

## Dual Input Terminals

For simultaneous connection of two computers, the T565 includes D-Sub and BNC × 5 input terminals. Both inputs also support Plug & Play (VESA DDC 2B) independently.

## T·V ECO Circle 2000 Compliance

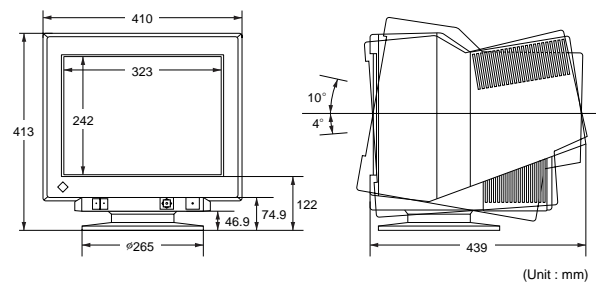
The T565 meets the requirements for the T·V ECO Circle 2000 mark. Other rigorous standards it complies with include TCO'99, the CE Mark, and the EPA ENERGY STAR<sup>®</sup> Program.



## FlexScan<sup>®</sup> T565 Specifications

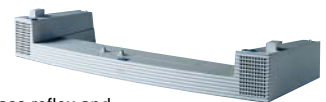
CRT Size	45 cm (17 inch) class, 90° deflection Tension Mask
CRT AG Pitch	0.25 mm
CRT Surface Treatment	Super ErgoCoat <sup>®</sup>
Scanning Frequency	H: 30 - 96 kHz V: 50 - 160 Hz
Input Signals	RGB Analog
Input Terminal	D-Sub 15-pin and BNC × 5 (switchable)
Active Display Size	323 mm (H) × 242 mm (V) (Diagonal: 403 mm)
Recommended Resolution	1280 dots × 1024 lines flicker-free at 89 Hz (maximum) (1600 dots × 1200 lines at 76 Hz addressable)
Screen Control	ScreenManager <sup>®</sup> , ScreenManager Pro for USB, One Touch Auto Adjustment Function (Auto-Sizing)
Pixel Dot Clock	200 MHz (typical)
Power Management	VESA DPMS
Power Consumption	110 W
Power Save Mode 1	Less than 10 W
Power Save Mode 2 (Off)	Less than 3 W
Plug & Play <sup>1</sup>	DDC 2B
Dimensions	410 mm (W) × 413 mm (H) × 439 mm (D)
Net Weight	19.5 kg
Certifications and Standards	TCO'99, T·V ECO Circle 2000, T·V/GS, c-Tick, CE, CB, UL 1950, CSA C22.2 No.950, FCC-B, Canadian ICES-003-B, T·V/S, VCCI-B, EPA ENERGY STAR <sup>®</sup> Program, Energy 2000
USB Standard	USB Standard Rev. 1.1 Compliance
USB Port	One upstream port

<sup>1</sup> Only valid when computer system supports all Plug & Play functions (personal computer, graphics board, Windows<sup>®</sup> 95/98/2000). For more details, please refer to the Windows 95/98/2000, personal computer, and graphics board manuals or contact the manufacturers.



(Unit : mm)

## i·Sound Sound Unit



Attachable sound unit with full range bass reflex and amplifier output of one watt per channel. This unit is sold separately from the FlexScanT565.

Specifications are subject to change without notice.

ENERGY STAR<sup>®</sup> is a U.S. registered mark. As an ENERGY STAR<sup>®</sup> Partner, Eizo Nanao Corporation has determined that this product meets the ENERGY STAR<sup>®</sup> guidelines for energy efficiency. Copyright © 2001 Eizo Nanao Corporation. All rights reserved. All product names are trademarks or registered trademarks of their respective companies. PowerManager and i·Sound, are trademarks, and FlexScan, EIZO, ScreenManager, and ErgoCoat are registered trademarks of Eizo Nanao Corporation.



**EIZO NANAO CORPORATION**

153 Shimokashiwano, Matto, Ishikawa 924-8566

Japan

Phone : +81 76 277-6792 Fax : +81 76 277-6793

<http://www.eizo.com/>