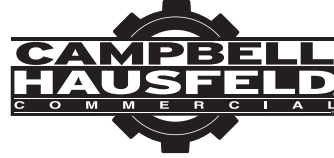
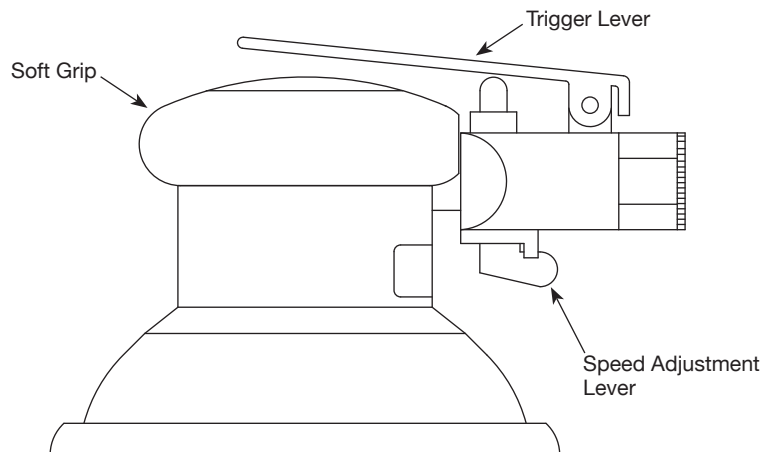


# Random Orbit Sander



MODELS: CL156500AV, CL156570AV



## Description

Random orbit air sanders quickly and efficiently produce swirl-free finishes on work surfaces such as sheet metal, wood and composite materials. A premium molded urethane sanding pad is included.

## Specifications

|                            |                                  |
|----------------------------|----------------------------------|
| Average Air Consumption    | 13.7 SCFM @ 90 psig (70% usage)  |
| Continuous Air Consumption | 19.6 SCFM @ 90 psig (100% usage) |
| Max. Operating Pressure    | 90 psig                          |
| Free Speed RPM             | 10,000                           |
| Orbit Pattern              | 3/16 inch                        |
| Controls                   | Variable speed                   |
| Air Inlet                  | 1/4 inch NPT (Female)            |
| Minimum Hose Size          | 3/8 inch                         |
| Grip Size                  | 3 inch                           |
| Tool Weight                | 1.8 lbs.                         |
| Pad Size                   | 5 inch                           |
| Pad Type                   |                                  |
| CL156500AV                 | Vinyl face PSA                   |
| CL156570AV                 | Hook and Loop                    |

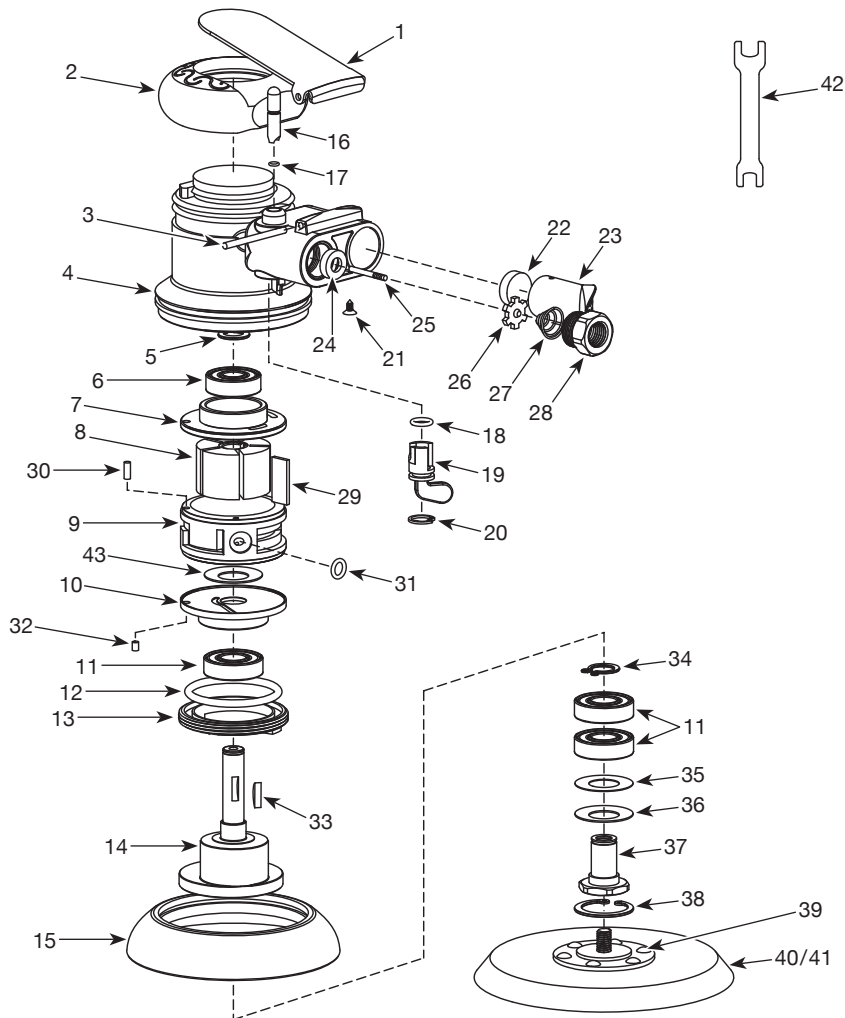
**For Replacement Parts or Technical Assistance,  
Call 1-855-504-5678**

Please provide following information:

- Model number
- Serial number (if any)
- Part description and number as shown in parts list

Address any correspondence to:

Campbell Hausfeld  
Attn: Customer Service  
100 Production Drive  
Harrison, OH 45030 U.S.A.



**REGISTER YOUR PRODUCT ONLINE NOW!**  
<http://reg.ch-commercial.com>

**REPLACEMENT PARTS LIST**

| Ref. No. | Description     | Part No.   | Qty. |
|----------|-----------------|------------|------|
| 1        | Trigger Lever   | ■          | 1    |
| 2        | Grip            | --         | 1    |
| 3        | Spring pin      | ■●         | 1    |
| 4        | Housing         | --         | 1    |
| 5        | Snap ring       | ●▼         | 1    |
| 6        | Bearing         | □          | 1    |
| 7        | Rear plate      | □          | 1    |
| 8        | Rotor           | SV630000AV | 1    |
| 9        | Cylinder        | ○          | 1    |
| 10       | Front plate     | △          | 1    |
| 11       | Bearing         | ▲△         | 3    |
| 12       | O-ring          | ●          | 1    |
| 13       | Nut             | --         | 1    |
| 14       | Shaft           | ▲          | 1    |
| 15       | Skirt           | --         | 1    |
| 16       | Throttle pin    | ◆          | 1    |
| 17       | O-ring          | ◆          | 1    |
| 18       | O-ring          | ●◆         | 1    |
| 19       | Regulator       | ◆          | 1    |
| 20       | Inner snap ring | ●◆         | 1    |
| 21       | Screw           | --         | 1    |
| 22       | Silencer        | ◇          | 1    |
| 23       | Exhaust stack   | ◇          | 1    |
| 24       | Valve rubber    | ●◆         | 1    |
| 25       | Valve           | ◆          | 1    |
| 26       | Valve plate     | ◆          | 1    |
| 27       | Spring          | ◆          | 1    |
| 28       | Inlet           | SV630300AV | 1    |
| 29       | Blade           | ▼          | 5    |
| 30       | Spring pin      | ●○         | 1    |
| 31       | O-ring          | ○          | 1    |
| 32       | Spring pin      | ●○         | 1    |
| 33       | Key             | ●          | 1    |
| 34       | Snap ring       | ▲          | 1    |
| 35       | Felt ring       | ▲●         | 1    |

*Continued on next page*

**REPLACEMENT PARTS LIST (CONTINUED)**

| Ref. No. | Description                     | Part No.   | Qty. |
|----------|---------------------------------|------------|------|
| 36       | Dust cover                      | ▲ ●        | 1    |
| 37       | Pad retainer/spindle, 5/16 - 24 | ▲          | 1    |
| 38       | Inner snap ring                 | ▲ ●        | 1    |
| 39       | Spacer                          | --         | 1    |
| 40       | Pad - hook and loop             | SV630400AV | 1    |
| 41       | Pad - vinyl face PSA            | SV630500AV | 1    |
| 42       | Pad wrench                      | --         | 1    |
| 43       | Washer                          | --         | 1    |

**REPLACEMENT PARTS KITS**

| Ref. No. | Description                        | Part No.   |
|----------|------------------------------------|------------|
| ▲        | Spindle assembly                   | SV631500AV |
| ■        | Lever kit                          | SV631000AV |
| ●        | Small parts kit                    | SV631400AV |
| ◆        | Air valve and speed adjustment kit | SV631100AV |
| ▼        | Vane kit                           | SV630600AV |
| △        | Front end plate assembly           | SV630900AV |
| □        | Rear end plate assembly            | SV630800AV |
| ○        | Cylinder assembly                  | SV630700AV |
| ◇        | Exhaust kit                        | SV631300AV |
| --       | Not available                      |            |