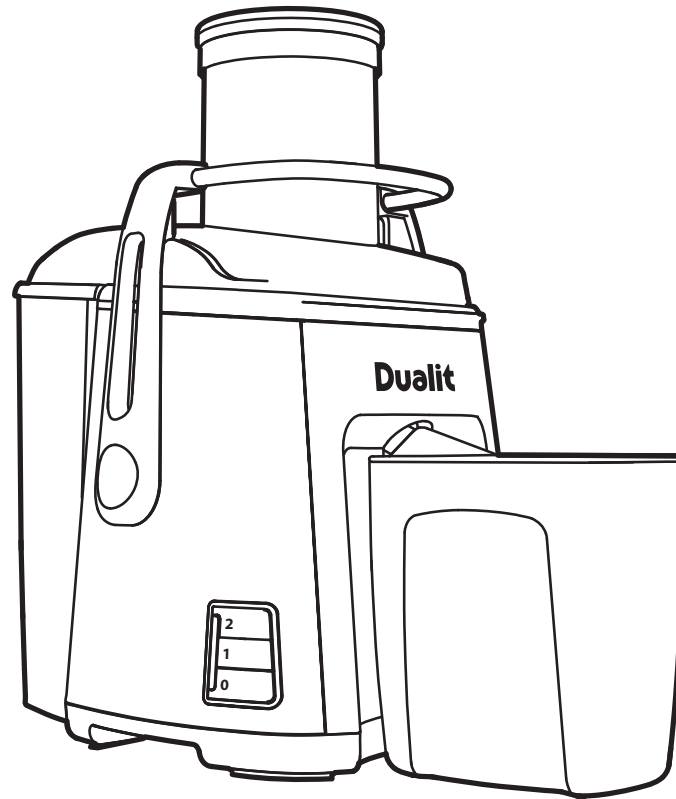


# Juice Extractor

Instruction Manual & Guarantee



## CONTENTS

Safety precautions.....	4
Before first use.....	5
Know your juicer.....	6
Preparing to juice .....	7
Using your juicer.....	8
Cleaning your juicer.....	9
Juicing & cleaning tips.....	10
Overload protection.....	10
Guarantee.....	11

## SAFETY PRECAUTIONS

### READ ALL INSTRUCTIONS BEFORE USING THE JUICER

#### KEEP THESE INSTRUCTIONS FOR FUTURE REFERENCE

When using electrical appliances, basic safety precautions should be followed, including the following.

- Remove any packaging material and promotional stickers and labels before using the juice extractor for the first time.
- Any significant spillage onto the surface under the appliance, or onto the appliance itself, should be cleaned before continuing to use the appliance.
- To protect against risk of electrical shock do not put unit in water or other liquid.
- Close supervision is necessary when unit is used by or near children.
- Unplug from outlet when not in use, before attaching or removing parts and before cleaning.
- Never touch moving parts.
- Never feed food by hand. Always use food plunger.
- The mesh filter is very sharp. Handle very carefully.
- Do not operate appliance with a damaged cord or plug or after the appliance malfunctions, or if it is dropped or damaged in any manner. Return appliances to the nearest authorised service facility for examination, repair or electrical or mechanical adjustment.
- Operate appliance only through a professionally installed socket supplying the correct voltage.
- Never let main cable hang loose, nor remove plug with wet hands, nor lay or hang on hot surfaces, nor let it come into contact with oils.
- Do not unlock the locking arm when juicer is in operation.
- Make sure the motor stops completely and the power supply plug is removed from outlet before disassembling.
- Keep hands, hair, clothing and utensils out of feeding tube while juicing to prevent the possibility of severe injury and/or damage to the juice extractor.
- Use the plunger supplied with the unit to dislodge food jammed in the Funnel. If food becomes jammed and cannot be dislodged using plunger, turn off the unit, unplug from outlet and disassemble unit to remove food. Never force food down the feed tube.
- Ensure unit is completely assembled before use. Do not operate the unit without mesh filter, pulp container and juice container.

4

- Do not use outdoors. This appliance is for household use only. Do not use this appliance for anything other than its intended use.
- Do not let cord hang over the edge of table, counter or bench or touch hot surfaces, including the stove.
- Accessories, other than those supplied with the appliance should not be used.
- Switch off the appliance and wait for mesh filter to stop rotating before changing accessories or approaching parts which move in use.
- Do not use the appliance if the rotating mesh filter is damaged.
- This appliance is not intended for use by children or other persons without assistance or supervision if their physical, sensory or mental capabilities prevent them from using it safely. Children should be supervised to ensure that they do not play with the appliance.
- This is an attended appliance. Do not leave the juice extractor unattended when in use.
- Always ensure the juice extractor is turned off by pressing the "0" switch on the control panel. Then switch the appliance off at the power outlet and unplug the cord. Make sure the mesh filter has stopped rotating before releasing the safety locking arm and/or attempting to move the appliance,

when the juice extractor is not in use, and before disassembling, cleaning and storing.

- Do not operate the appliance continuously with heavy loads for more than 10 seconds. Allow the motor to rest for 5 minutes between each use.
- Be careful when handling the mesh filter. The small cutting blades are very sharp. Mishandling may cause injury.
- Fully unwind the cord before use.

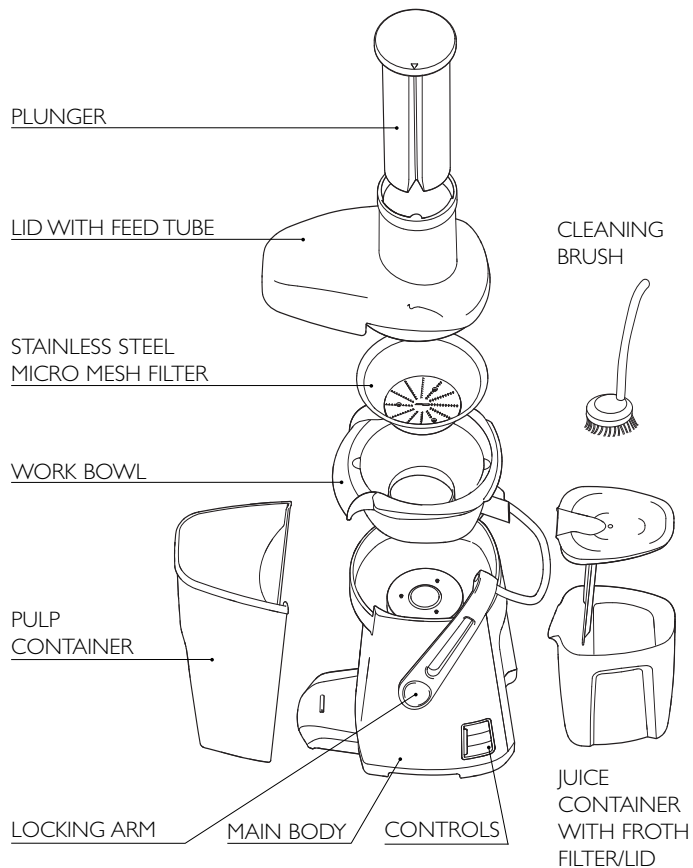
### SAVE THESE INSTRUCTIONS

Unpack the box with care, keeping all the packaging materials until you are satisfied everything is present and in working order. Once satisfied recycle the packaging appropriately.

Before using for the first time, carefully wash and dry all parts which come into contact with food – lid, plunger, mesh filter, work bowl, froth filter and juice container. Carefully wipe the main body with a damp cloth.

5

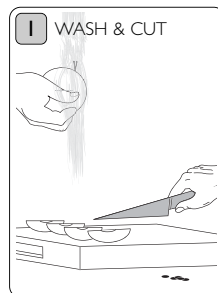
## KNOW YOUR JUICER



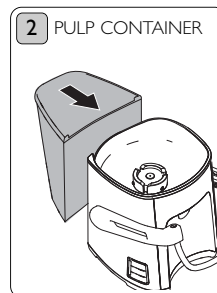
All illustrations are for representation only.

## PREPARING TO JUICE

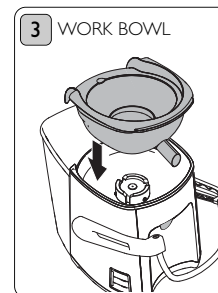
**PLACE THE MAIN BODY ON A FLAT, DRY SURFACE. ENSURE ALL STONES, PEEL AND PIPS ARE REMOVED BEFORE JUICING.**



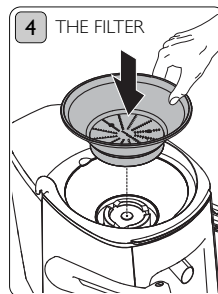
Wash the fruit/vegetables. Cut into conveniently sized pieces for inserting into the feed tube. **Stones, peel and pips must be removed.**



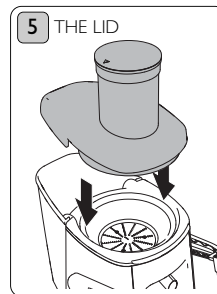
Attach the pulp container to the rear of the main body and align and position in place.



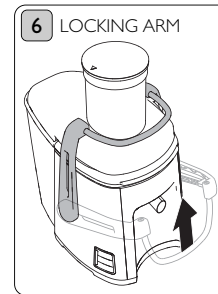
Insert the spout of the work bowl through the hole on the main body, then place the work bowl on the main body and pulp container.



Attach the mesh filter basket by pushing it down on to the coupling of the main body until it clicks into place.



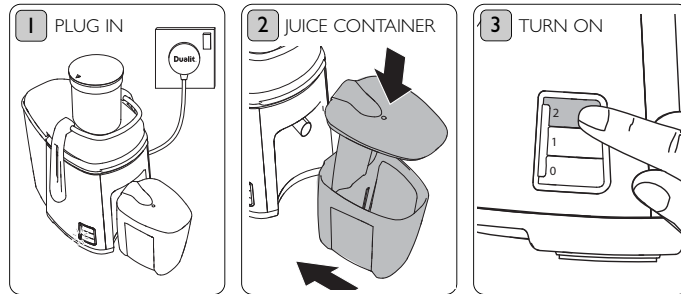
Align and place the lid on top of work bowl and pulp container.



Raise the safety locking arm up and lock into the two grooves on either side of the juicer lid. It will click and lock into place.

## USING YOUR JUICER

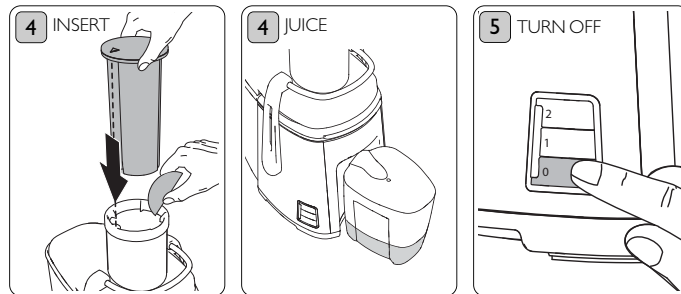
**ALWAYS USE THE PLUNGER TO PUSH FOOD DOWN THE FEED TUBE. THE FOOD MUST BE FED IN WHILST THE MOTOR IS IN OPERATION.**



Plug in the juicer, the power indicator will flash red when in standby mode.

Insert the froth filter into the jug and place assembled jug under the spout.

Start the juice extractor by pressing the power button "1" for soft foods or "2" for hard foods.



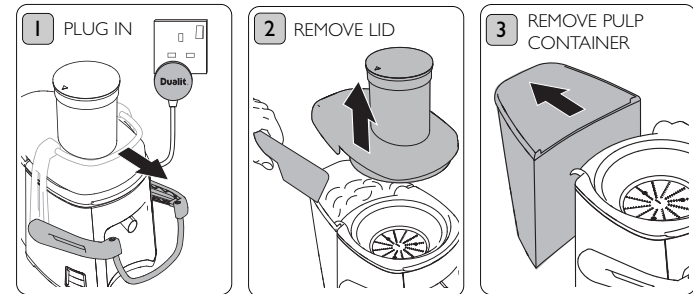
Insert the prepared fruit or vegetables into the feed tube and gently push down with the plunger. **NEVER USE YOUR FINGERS.**

Fresh juice will flow into the juice container and the pulp will collect in the pulp container.

To stop juicing press the off button "0". To serve pour slowly into a glass or jug. The froth will remain in the juice container leaving delicious fresh juice.

## CLEANING YOUR JUICER

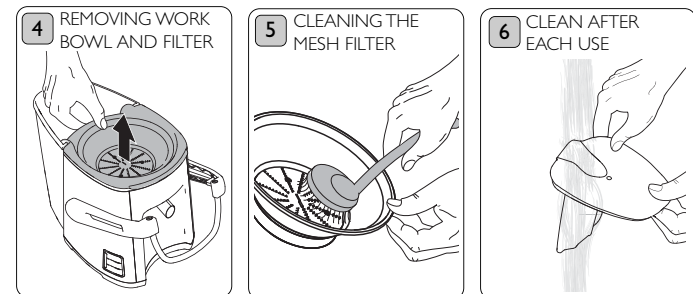
**CLEAN IMMEDIATELY AFTER EVERY USE. DO NOT USE ABRASIVE CLEANERS. NEVER IMMERSE OR RINSE THE MAIN BODY IN WATER.**



Unplug the juicer and then lower the safety locking arm to unlock the lid.

Remove the lid and wipe any excess pulp into the pulp container.

Remove the pulp container by tilting back and away. Empty and clean thoroughly.



Remove the mesh filter by lifting the work bowl, this will unlock the mesh filter. Then lift the mesh filter up and out.

Take caution when cleaning the mesh filter as the blades are sharp. Use the brush to clean the filter.

Clean all the parts in contact with food using warm soapy water and a soft brush. If using a dishwasher see cleaning tips on page 10.

## JUICING & CLEANING TIPS

- Where possible, use fresh fruit and vegetable for the best flavours.
- Experiment with different fruit and vegetable combinations, visit [www.dualit.com](http://www.dualit.com) for recipe ideas.
- Drink your juice soon after being extracted for maximum taste and nutritional value.
- Leave juice to settle for 60 seconds before serving
- Push down slowly on the plunger to extract the maximum amount of juice.
- Let the motor run on after juicing until the juice stops flowing.
- Peel citrus fruits or any fruits with a thick peel before inserting and remove pips or stones before juicing.
- Foods with high starch content are not suitable for juicing these will clog up the mesh filter. e.g. mangos, bananas, and papayas. Use the Dualit Blender for these types of foods.
- Use a spatula to help wipe any excess pulp in to the pulp containing whilst cleaning.
- All attachments and bowls excluding the main body are suitable for dishwasher use. Use a wash cycle below 40°C. Only put the juicer parts on the top rack of your dishwasher and keep them well away from the heating elements. Remove prior to drying cycle.

## OVERLOAD PROTECTION

- The juice extractor has an overload protection feature. If the motor stalls for 3 seconds when a piece of fruit or vegetable is stuck, the power will be cut automatically. All 3 LEDs by the control switches will flash slowly.
- You can reset by unplugging from outlet then disengaging the safety switch by unlocking the safety locking arm.
- Then remove excess fruit inside the lid's feed tube and on the mesh filter:
- Reassemble and you'll be ready to juice.

## GUARANTEE

This appliance is of excellent quality and construction. However, if any defects in materials or workmanship do appear during the relevant guarantee period, we will, at our discretion, either repair or replace the defective parts, free of charge, subject to the terms and conditions of our Guarantee shown below.

This Guarantee covers both parts and labour. Carriage is not included.

Your guarantee period is as follows:

- 1 year parts and labour

This Guarantee provides benefits which are additional to, and do not affect, your statutory rights. This Guarantee does not cover the cost of returning the product to the dealer from whom it was purchased or to ourselves. This Guarantee applies only to products sold and located in mainland Great Britain. It does not cover liability in respect of or replacement of plugs, cables or fuses and also does not cover defects due to:

- Failure to use or maintain product in accordance with Dualit's instructions.
- The product being connected to an unsuitable electricity supply.
- Accidental damage to, or abuse or misuse, of the product.
- Product modification by anyone other than Dualit or an approved agent.
- Dismantling of or interference with the product.
- Theft or attempted theft of the product.

Before returning any product under this guarantee, please check that:

- You have followed the product instructions correctly.

- Your mains electricity supply is functional.
- The defect is not due to a blown fuse.

If you wish to claim under this Guarantee you should:

- Send the product, postage or carriage paid, to the dealer from whom it was purchased.
- Ensure that the product is clean and packed carefully (preferably in its original carton).
- Enclose details of your name, address, telephone number and when and where the product was purchased, together with proof of purchase (e.g. a till receipt).
- Give exact details of the nature of the defect.

This Guarantee does not cover any other claims whatsoever; including, without limitation, any liability for incidental, indirect or consequential damage, nor does it cover any claims for conversion or modification or for the costs of repair carried out by any third party without the prior consent of Dualit. If replacement parts are fitted to the product this will not extend the period of the Guarantee.

For further advice contact the Dualit customer helpline on +44 (0)1293 652 500 (09:00 to 17:00 Monday to Friday).

Alternatively, email Dualit at [info@dualit.com](mailto:info@dualit.com) or visit [www.dualit.com](http://www.dualit.com).

**Dualit®**



Dualit Limited County Oak Way Crawley West Sussex RH11 7ST  
Telephone: +44 (0) 1293 652 500 Facsimile: +44 (0) 1293 652 555  
Email: [info@dualit.com](mailto:info@dualit.com) Web: [www.dualit.com](http://www.dualit.com)