

# VR PARABOLIC VRA2G9LP317

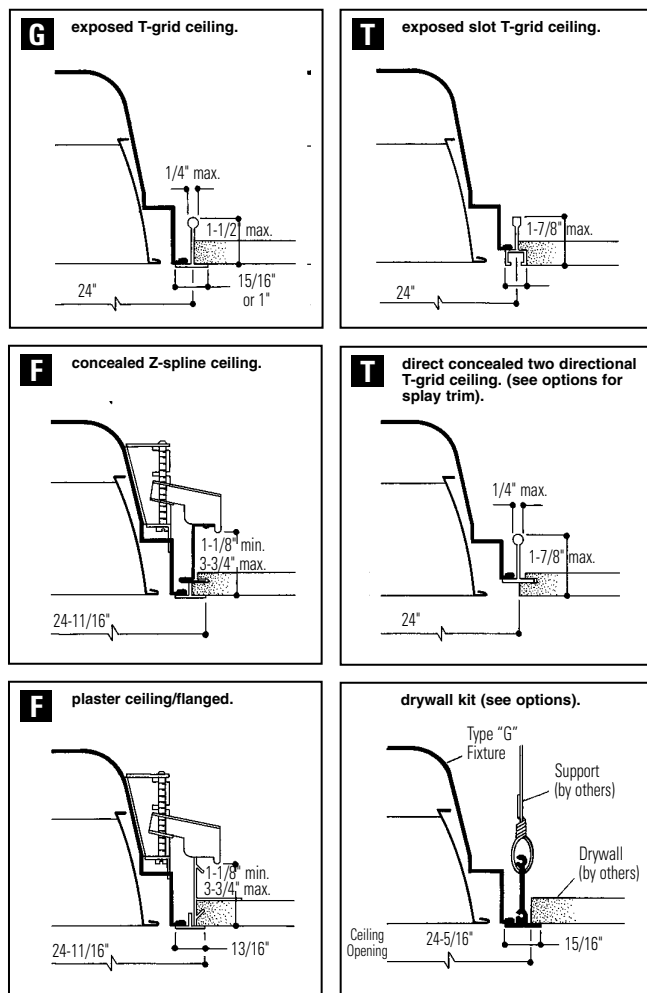
2'x2' RECESSED FLUORESCENT, 4" DEEP, 9 CELL (3x3) PARABOLIC LOUVER  
 STATIC OR AIR SUPPLY/RETURN, IES RP1 FOR NORMAL VDT USE

## Features

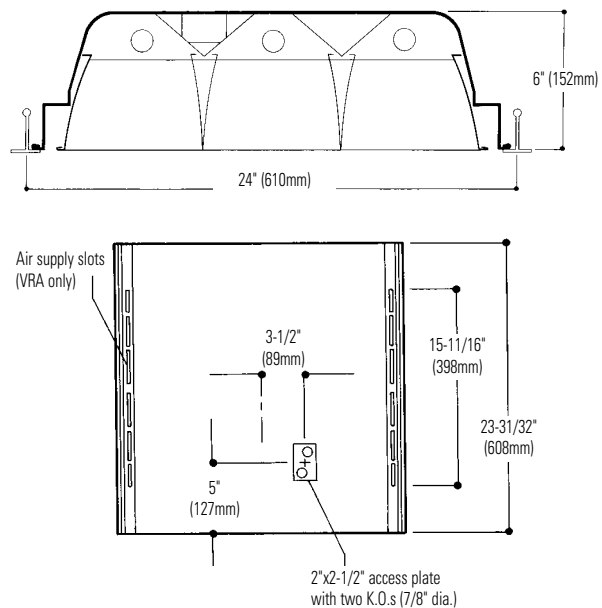
- Meets IES RP1 for lighting VDT areas with normal use.
- 62.7% efficient.
- 1.4 spacing mounting ratio.
- Only 6" deep body.
- One-piece housing.
- Specular low iridescence pre-anodized louver.
- Spring-loaded latches.
- Concealed "T" hinges.
- Louver frame with integral positive light stop.
- Earthquake clips included.
- Louver has protective film dust guard.
- Air closure strips (optional).
- UL-Listed twin knockout access plate.
- Construction to meet Chicago Plenum Code is available.



## MOUNTING METHOD



## DIMENSIONS



## Job Information

## Type:

**Job Name:**

**Cat. No.:**

**Lamp(s):**

**Volts/Ballast:**

Lightolier a Genlyte Thomas Company [www.lightolier.com](http://www.lightolier.com)  
 Technical Information: (978) 657-7600 • Fax (978) 658-0595  
 631 Airport Road, Fall River, MA 02720 • (508) 679-8131 • Fax (508) 674-4710  
 We reserve the right to change details of design, materials and finish.  
 © 2002 Genlyte Thomas Group LLC (Lightolier Division)  
 A0902 **SECTION 2/Folio G05-42 REV. A**

**LIGHTOLIER**



# VR PARABOLIC VRA2G9LP317

## 2'x2' RECESSED FLUORESCENT, 4" DEEP, 9 CELL (3x3) PARABOLIC LOUVER STATIC OR AIR SUPPLY/RETURN, IES RP1 FOR NORMAL VDT USE

### PHOTOMETRY

MODEL NO. VRA2G9LP317

LER = FP - 33.0 WATTS - 47.0 BF - 0.90  
Comparative yearly lighting energy cost per 1000 lumens = \$7.27

**GT TESTING LABORATORY**  
45 Industrial Way  
Wareham, MA 01987  
(508) 657-7600

REPORT NO.: G84034 DATE: 06-03-1984  
CATALOG NO.: VRA2G9LP31712003  
LAMP(S): 3 F17T8, EACH RATED 1375 LUMENS  
LUMINAIRE: 2X2 VDT TROFFER, WITH 3X3 CELL SEMI-SPECULAR LOUVER, B3321120RH BALLAST, 120 VAC, WATTS = 47, BF = 0.90

ANGLE	0	5	15	25	35	45	55	65	75	85	90
0	1219	1219	1219	1219	1219	67.5	80.0				
5	1214	1218	1227	1241	1247	118					
15	1156	1195	1295	1394	1437	370					
25	1054	1163	1452	1690	1724	891					
35	908	1112	1382	1199	1044	720					
45	701	921	691	436	400	500					
55	377	409	183	86	57	202					
65	30	26	15	10	10	21					
75	7	5	3	2	2	4					
85	0	0	0	0	0	0					
90	0	0	0	0	0	0					

**ZONAL LUMEN SUMMARY**

ZONE	LUMENS	%LAMP	%FIXT
0-30	1139	27.6	44.0
0-40	1859	46.1	71.9
0-60	2561	62.1	99.0
0-90	2586	62.7	100.0
90-180	0	0.0	0.0
0-180	2586	62.7	100.0

TOTAL LUMINAIRE EFFICIENCY = 82.7 %  
TOTAL REFLECTANCE OF PAINT = 91.0 %  
CIE TYPE - DIRECT PLANE 1 0-DEG 90-DEG  
SPACING CRITERIA : 1.2 1.4  
SHIELDING ANGLES : 55 55  
LUMINOUS LENGTH : 21.500 21.500

**LUMINANCE DATA IN CANDELA/SQ M**

ANGLE	AVERAGE	AVERAGE	AVERAGE
IN DEG	0-DEG	45-DEG	90-DEG
0	4086.	4086.	4086.
45	3323.	3223.	1896.
55	2203.	1069.	333.
65	238.	119.	79.
75	91.	39.	26.
85	0.	0.	0.

**coefficients of utilization — zonal cavity method** (effective floor cavity reflectance 0.20)

RF	20	20	20
RC	80	50	30
RW	70	50	30
1	71	69	67
2	67	63	60
3	62	58	54
4	58	53	49
5	55	48	44
6	51	44	40
7	47	40	36
8	44	37	32
9	41	33	29
10	38	30	26

**visual comfort probability** (rated lumens per lamp 3150.)

room size	ceiling height				ceiling height				
W	L	8.5	10.0	13.0	16.0	8.5	10.0	13.0	16.0
20	20	90	89	84	81	98	97	97	93
20	30	90	91	87	82	98	98	97	94
20	40	91	91	89	85	98	98	97	95
20	60	91	90	90	86	98	98	97	95
30	20	90	89	88	84	98	98	97	93
30	30	91	90	89	85	98	98	97	94
30	40	91	90	91	87	98	97	98	94
30	60	91	91	91	88	99	97	98	94
30	80	91	91	90	88	99	97	98	94
40	20	91	89	88	85	98	98	97	93
40	30	91	90	90	86	98	97	98	94
40	40	91	91	91	88	99	97	98	94
40	60	91	91	91	88	99	97	97	95
40	80	91	91	91	88	99	97	97	95
40	100	91	91	91	88	99	98	97	95
60	30	91	91	90	86	99	97	98	94
60	40	91	91	90	88	99	97	97	95
60	60	91	91	91	88	99	98	97	95
60	80	91	91	91	88	99	98	98	94
60	100	91	91	91	88	99	98	98	94
100	40	91	91	91	88	99	97	97	95
100	60	91	91	91	88	99	98	98	94
100	80	91	91	91	88	99	98	98	94
100	100	91	91	91	88	99	98	98	95

### ORDERING INFORMATION

Explanation of Catalog Number. Example: VRA2G9LP317120SOGLR

<b>VR</b>	<b>2</b>	<b>9</b>	<b>P</b>	<b>3</b>	<b>17</b>	<b>VOLTAGE:</b> 120 or 277	<b>OPTIONS:</b> Add appropriate suffix to catalog no. ie: (GLR)	
<b>VR:</b> 4" Deep Pre-anodized Aluminum Louver For Normal VDT Use	<b>BODY STYLE:</b> A=Air Handling S=Static	<b>FIXTURE WIDTH</b>	<b>CEILING TYPE:</b> G=Grid (lay-in T bar) F=Flanged (overlap) Z spline and plaster frame T=Slot grid or two-directional concealed T (see options)	<b>LOUVER FINISH*:</b> L=Low Iridescence Semi-specular (standard) P=Low Iridescence Specular	<b>DUAL "V" REFLECTOR</b>	<b>LAMP QUANTITY</b>	<b>LAMP TYPE/ FIXTURE LENGTH:</b> 17=T8, 2' Lamp (Nominal 24")	<b>BALLAST TYPE:</b> <20THD <10THD SO* HI* O3* H3* PS -

Other dimming options. Consult factory.

### OPTIONS & ACCESSORIES

- PLASTER FRAME:** Catalog Number: **PF22**.
- CONTINUOUS ROW INSTALLATION:** For F type fixtures, half-width flanges are required between fixtures. Order Catalog Number: **S2FCTRIM** (each joint).
- SPLAY TRIM:** For T ceiling type only. SUFFIX: **CTZ22 S2 SPLAY TRIM**.
- RADIO INTERFERENCE FILTER:** 120 or 277 volt, 50 or 60 Hz. One per fixture standard. SUFFIX: **RF**.
- ELECTRICAL WIRING OPTIONS:** Consult factory.
- AIR CLOSURE STRIPS:** SUFFIX **ACS2** (factory installed).
- DRYWALL KIT:** Order Catalog Number: **FK92X2**. (Request Folio OA30-10.)
- CHICAGO PLENUM:** SUFFIX: **CP**.

### SPECIFICATIONS

**PERFORMANCE:** In an installation of 3 lamp 17W luminaires in a room cavity ratio of 1, reflectance 80% ceiling, 50% wall, 20% floor, the C.U. shall not be less than .69 with a spacing to mounting ratio of 1.4 perpendicular to the lamps. To meet IES RP1 preferred requirements for VDT areas the VCP (visual comfort probability) shall not be less than 91 either crosswise or lengthwise and the maximum average brightness at 65°, 75° and 85° shall not exceed 238, 91 and 0 candelas per square meter respectively in the 0°, 45°, and 90° horizontal planes.

### SPECIFICATIONS (continued)

- AIR HANDLING:** (VRA only) side air passages for air supply or air return. Optional side closure strips. Air return is also provided through the lamp compartment through fixture body ends.
- MATERIALS:** Chassis parts are die-formed code gauge cold rolled steel.
- Housing** side rails hemmed over and housing ends turned-in for safe handling.
- LOUVER:** Pre-anodized aluminum (Coilzak® or equal).
- FINISH:** Chassis exterior—black baked polyester enamel. Cavity—white baked polyester enamel minimum 86% reflectance. Phosphate undercoating.
- Louwer**—low iridescence semi-specular anodized vertical grain aluminum reflector sheet is standard.
- ELECTRICAL:** Thermally protected class "P" ballast C.B.M. approved, non PCB. If K.O. is within 3" of ballast, use wire suitable for at least 90°.
- LABELS:** I.B.E.W./UL and C-UL.

<b>Job Information</b>	<b>Type:</b>
Lightolier a Genlyte Thomas Company Technical Information: (978) 657-7600 • Fax (978) 658-0595 631 Airport Road, Fall River, MA 02720 • (508) 679-8131 • Fax (508) 674-4710 We reserve the right to change details of design, materials and finish. © 2002 Genlyte Thomas Group LLC (Lightolier Division) A0902	www.lightolier.com

LIGHTOLIER®