

MOXA Multiport Serial Board

Windows 2003 Driver Installation Guide

First Edition, June 2003



Moxa Technologies Co., Ltd.

Tel: +886-2-8919-1230

Fax: +886-2-8919-1231

www.moxa.com

support@moxa.com.tw

MOXA Multiport Serial Board

Windows 2003 Driver Installation Guide

The software described in this manual is furnished under a license agreement and may be used only in accordance with the terms of that agreement.

Copyright Notice

Copyright © 2003 Moxa Technologies Co., Ltd.

All rights reserved.

Reproduction without permission is prohibited.

Trademarks

MOXA is a registered trademark of Moxa Technologies Co., Ltd.

All other trademarks or registered marks in this manual belong to their respective manufacturers.

Disclaimer

Information in this document is subject to change without notice and does not represent a commitment on the part of Moxa.

Moxa provides this document “as is,” without warranty of any kind, either expressed or implied, including, but not limited to, its particular purpose. Moxa reserves the right to make improvements and/or changes to this manual, or to the products and/or the programs described in this manual, at any time.

Information provided in this manual is intended to be accurate and reliable. However, Moxa Technologies assumes no responsibility for its use, or for any infringements on the rights of third parties that may result from its use.

This product might include unintentional technical or typographical errors. Changes are periodically made to the information herein to correct such errors, and these changes are incorporated into new editions of the publication.

Table of Contents

Chapter 1	Introduction	4
Chapter 2	Driver Installation for PCI Boards under Windows 2003	5
Chapter 3	Driver Installation for ISA Boards under Windows 2003	8
Chapter 4	Changing the Properties of Multi-port Boards	16
Chapter 5	Checking for the Installation Result.....	20
Chapter 6	Uninstalling the Driver	22

Introduction

Welcome to the driver installation guide under Windows 2003 for MOXA Multiport Serial Boards. This installation guide is for all series of MOXA multiport serial boards, including PCI, ISA, and universal PCI boards.

The rest of this installation guide is divided into the following chapters:

Chapter 2, *Driver Installation for PCI Boards under Windows 2003*, sets forth the steps for installing the driver for PCI boards under Windows 2003.

Chapter 3, *Driver Installation for ISA Boards under Windows 2003*, elaborates on the steps for installing the driver for ISA boards under Windows 2003.

Chapter 4, *Changing the Properties of Multiport Boards*, tells you how to configure the properties of your multiport boards when needed.

Chapter 5, *Checking the Installation*, points out 3 approaches to check if the installation is successful.

Chapter 6, *Uninstalling the Driver*, shows you how to uninstall the driver.

The Windows 2003 driver for MOXA's multiport boards supports the following products:

- PCI Boards: C104H/PCI, C104HS/PCI, C168H/PCI, CP-132, CP-132I, CP-132S, CP-132IS, CP-114, CP-114I, CP-114S, CP-114IS
- ISA Boards: C104P, C104H, C104HS, CI-104J, CI-104JS, C168P, C168H, C168HS, CI-104J, CI-132, CI-132I, CI-132IS, CI-134, CI-134I, CI-134IS
- cPCI Boards: CT-114I
- Universal PCI Boards: CP-104UL, CP-104JU, CP-168U, CP-132UL, CP-132U-I, CP-134U, CP-134U-I

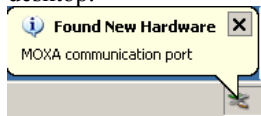
For more information about our multiport board products or technical documents, contact your RSM or visit our website at www.moxa.com.

Driver Installation for PCI Boards under Windows 2003

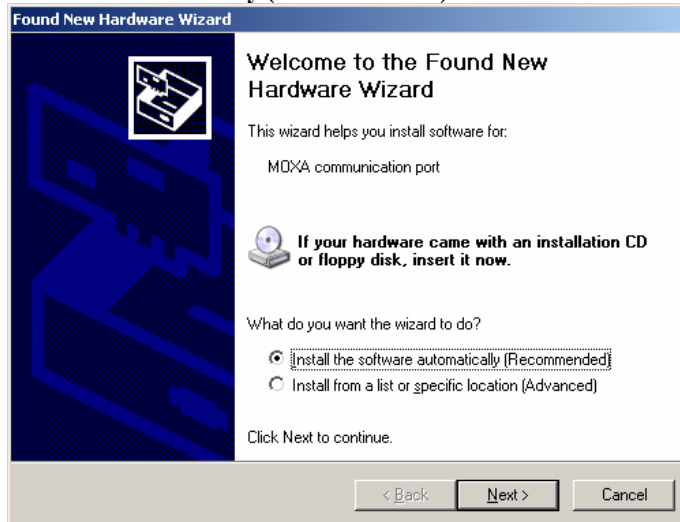
This chapter includes information about how to install the driver for PCI boards under Windows 2003. Before you start the installation, you need to follow the steps for hardware installation in the user's manual enclosed with the product you purchased. The following steps are set forth using CP-114 Series as an example.

Installing the Driver

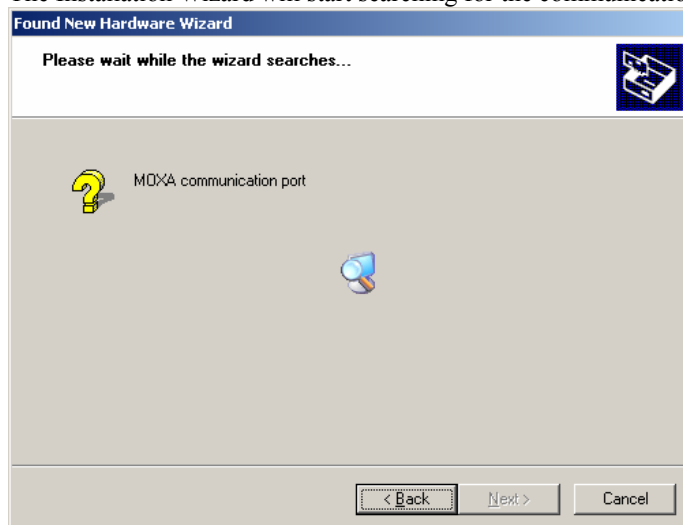
1. After installing the PCI board and powering on your PC, Windows 2003 will auto detect and find the PCI board you just added. The **Found New Hardware** window will open at the bottom right corner of the desktop.



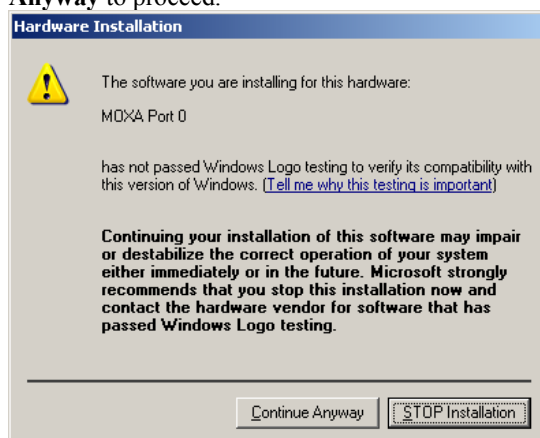
2. The **Welcome to the Found New Hardware Wizard** window will open automatically. Select **Install the software automatically (Recommended)** and click on **Next** to continue.



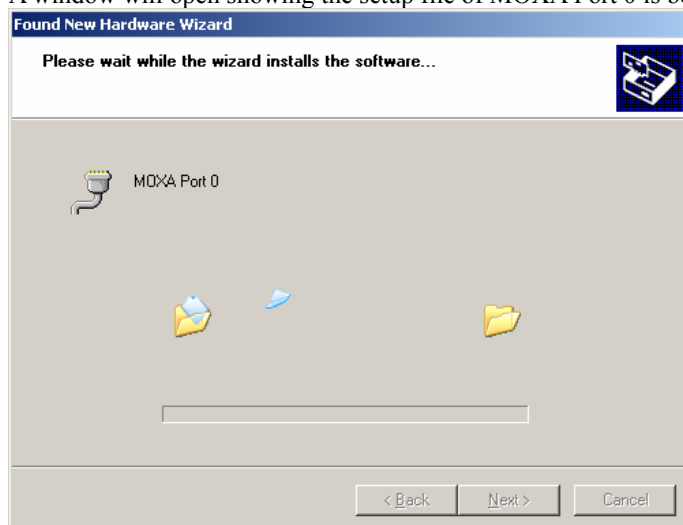
3. The Installation Wizard will start searching for the communication port.



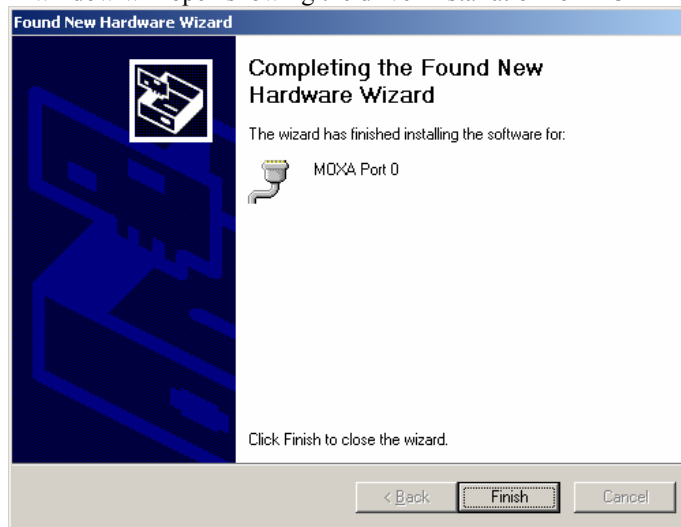
4. The next window that opens cautions you that although this software hasn't passed Windows Logo testing, this driver has already been tested and been shown that it can support Windows OS. Click on **Continue Anyway** to proceed.



5. A window will open showing the setup file of MOXA Port 0 is being copied.



6. A window will open showing the driver installation for MOXA Port 0 is completed.



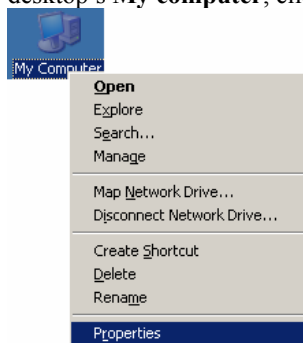
7. Repeat steps 2 to 6, until the driver installation for every port is completed.

Driver Installation for ISA Boards under Windows 2003

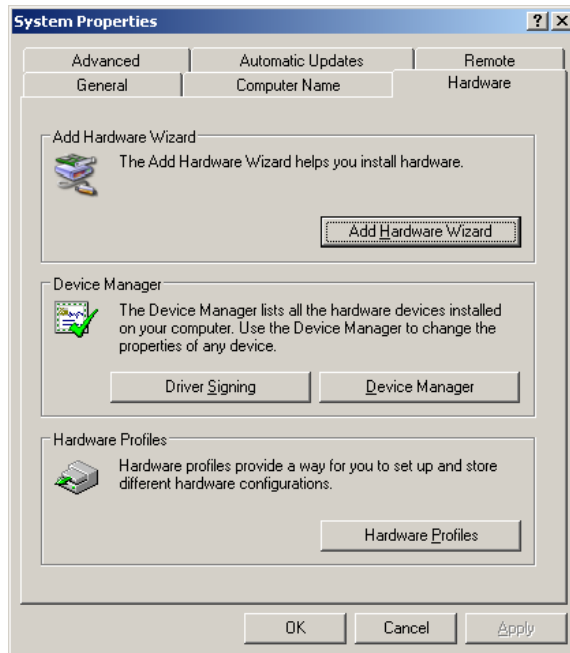
This chapter includes information about how to install the driver for ISA boards under Windows 2003. Before you start the installation, you need to follow the steps for hardware installation in the user's manual enclosed with the product you purchased. The following steps are set forth using C168 Series as an example.

Installing the Driver

1. After you installed the board and powered on your PC, use your mouse to position the cursor over your desktop's **My computer**, click the right mouse button, and then select **Properties**.



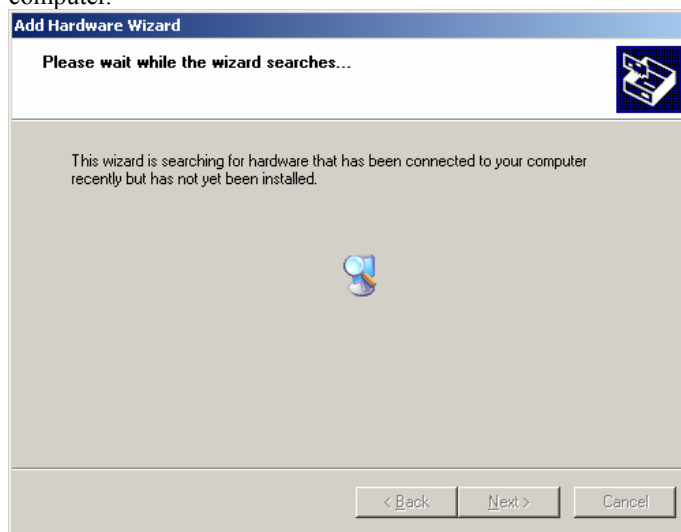
2. When the **System Properties** window opens, click on the **Hardware** tab, and then click on **Add Hardware Wizard** to start the installation.



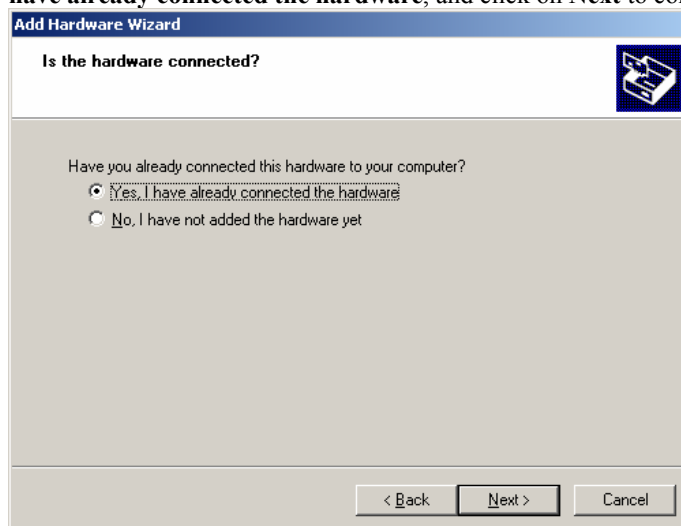
3. A Welcome message will appear. Click on **Next** to continue.



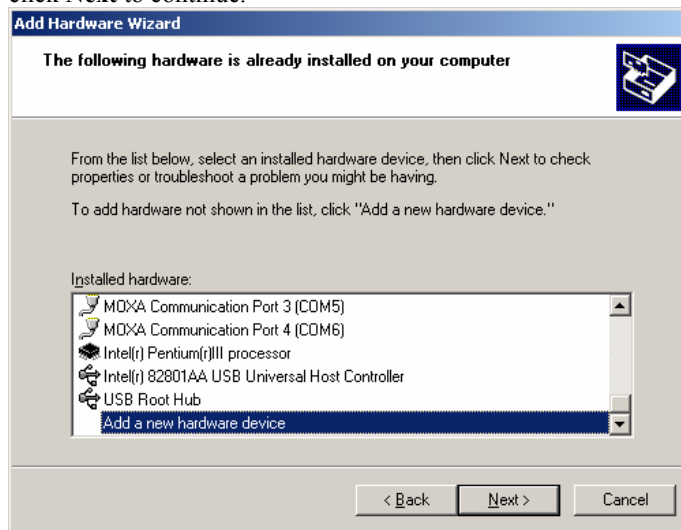
4. A window will open showing that the computer is searching for the serial board you just added to your computer.



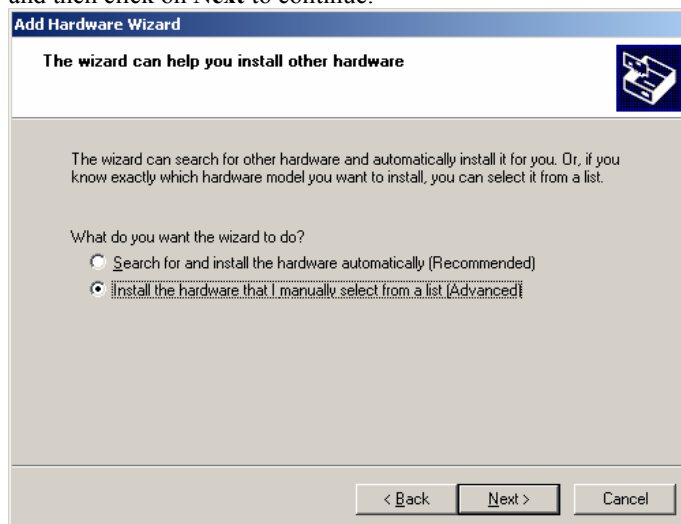
5. A window will open asking if you have already connected the serial board to your computer. Select **Yes, I have already connected the hardware**, and click on **Next** to continue.



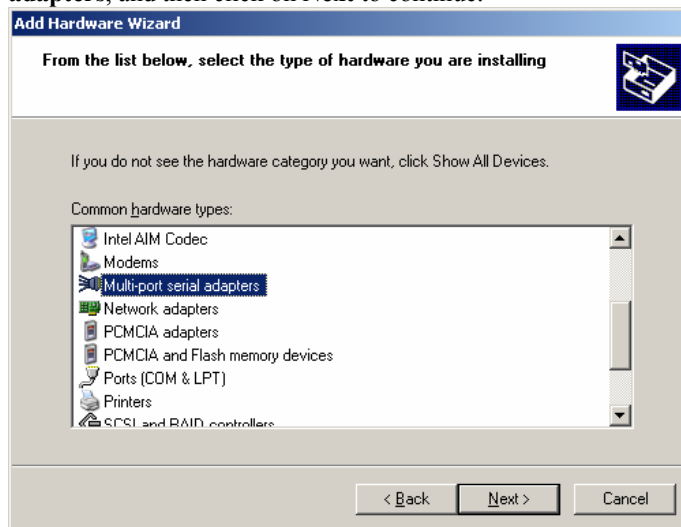
6. The next window to open lists many hardware options. Select **Add a new hardware device**, and then click **Next** to continue.



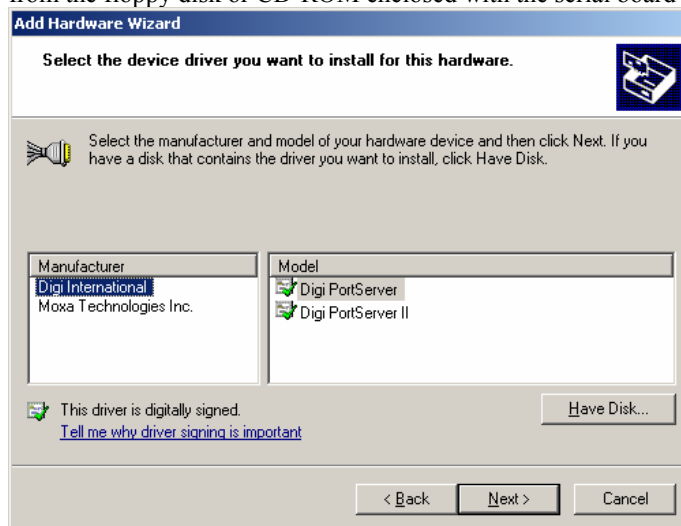
7. When the next window opens, select **Install the hardware that I manually select from a list (advanced)**, and then click on **Next** to continue.



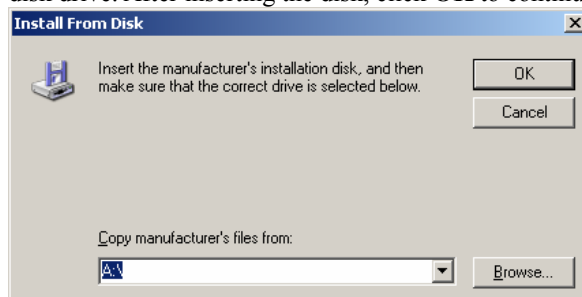
8. A window will open asking you to select the type of hardware you are installing. Select **Multi-port serial adapters**, and then click on **Next** to continue.



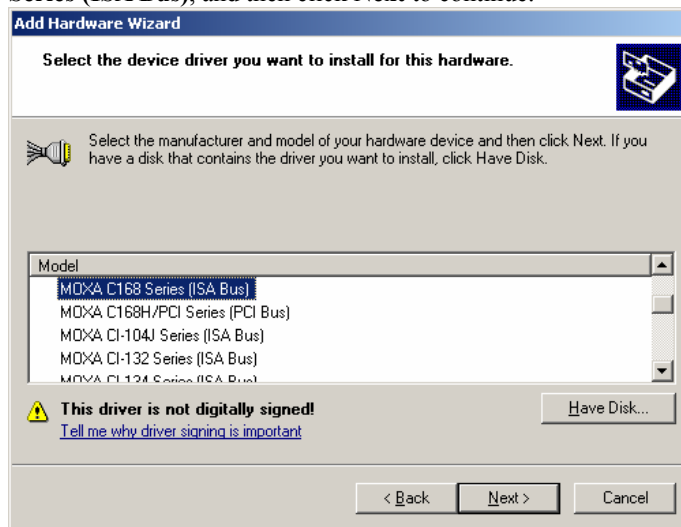
9. The next window to open asks you to select the driver you want to install. Click **Have Disk...** to install from the floppy disk or CD-ROM enclosed with the serial board you purchased.



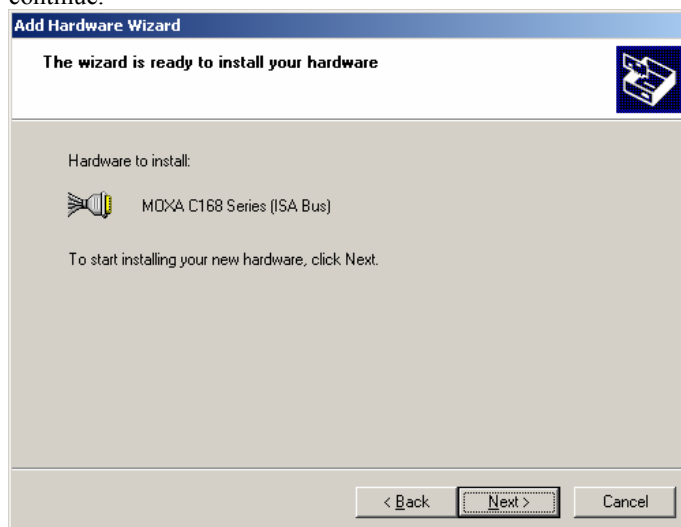
10. The **Install From Disk** window that opens prompts you to insert the installation disk into your computer's disk drive. After inserting the disk, click **OK** to continue.



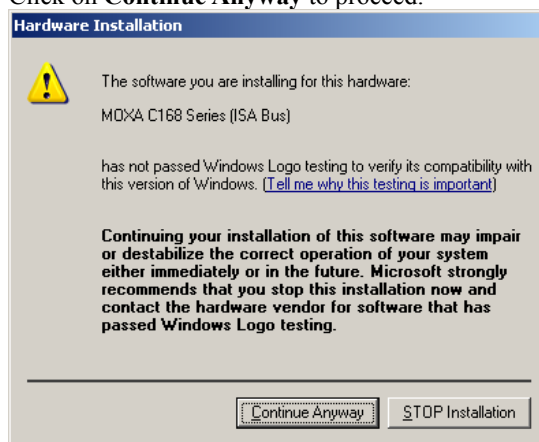
11. The next window to open prompts you to select the model of the board. In this case, select **MOXA C168 Series (ISA Bus)**, and then click **Next** to continue.



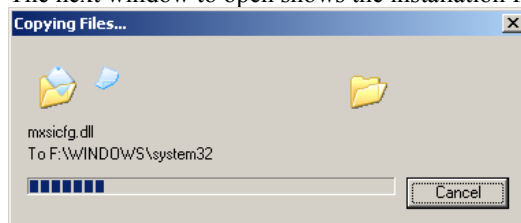
12. A window will open, stating that wizard is ready to install the driver for C168 Series. Click **Next** to continue.



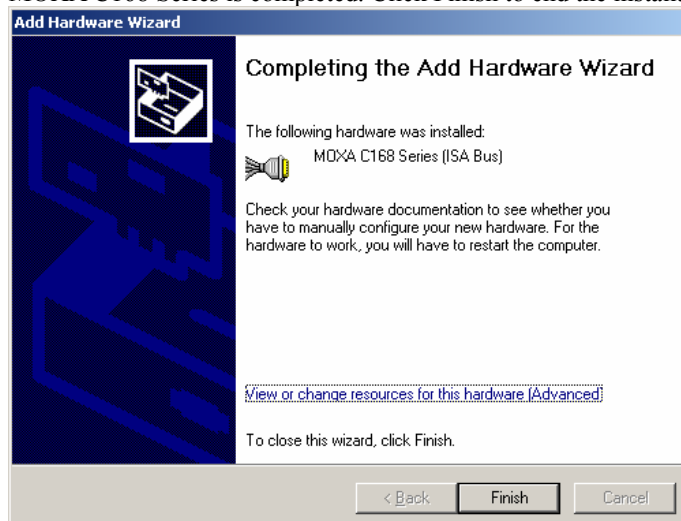
13. Although the next window to open states that the software hasn't passed Windows Logo testing, you can rest assured that this driver has already been tested and been shown that it can support this Windows OS. Click on **Continue Anyway** to proceed.



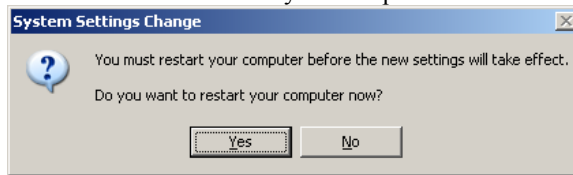
14. The next window to open shows the installation files are being copied.



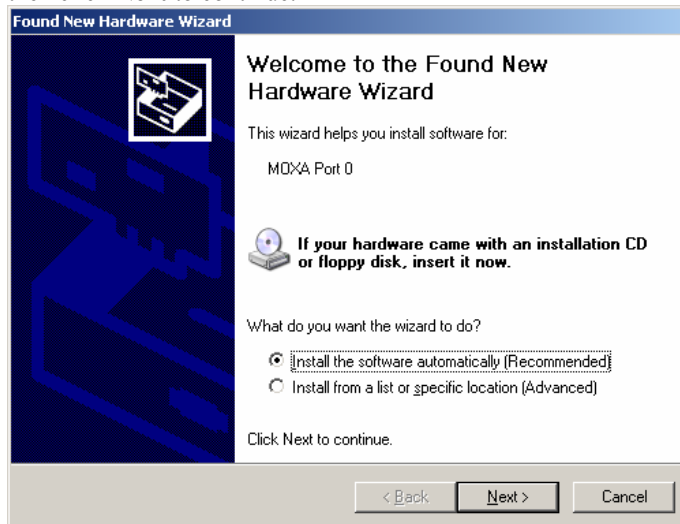
15. The **Completing the Add Hardware Wizard** window will open next, stating that the installation for MOXA C168 Series is completed. Click Finish to end the installation.



16. The **System Settings Change** window will open, asking to restart your computer to let new settings take effect. Click **Yes** to restart your computer.



17. After your computer has restarted, the **Found New Hardware Wizard** window will open to help you install the driver for **MOXA Port 0**. Select **Install the software automatically (Recommended)**, and then click **Next** to continue.



18. The wizard will start to copy the installation files. After all installation files are copied, the **Completing the Found New Hardware Wizard** window will open, stating that the installation is finished. Click **Finish** to end the installation.



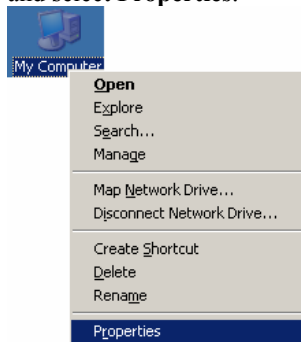
19. The driver installation for ports will continue until the installation of each port is completed.

4

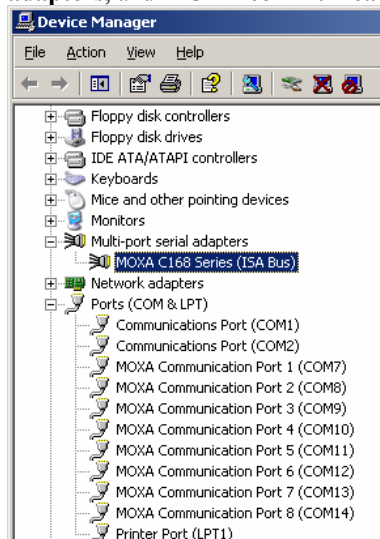
Changing the Properties of Multi-port Boards

This chapter includes information about how to change your ISA boards' configuration if they are not set with default settings.

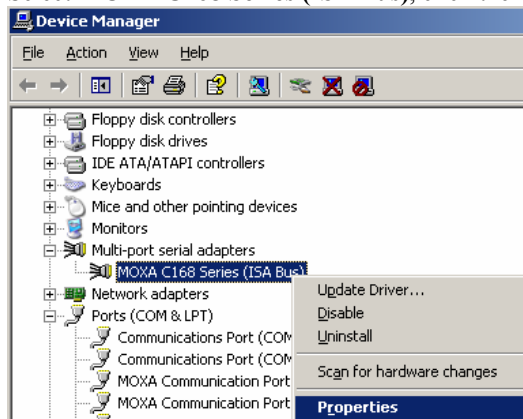
1. Use your mouse to position the cursor over your desktop's **My computer**, click the right mouse button, and select **Properties**.



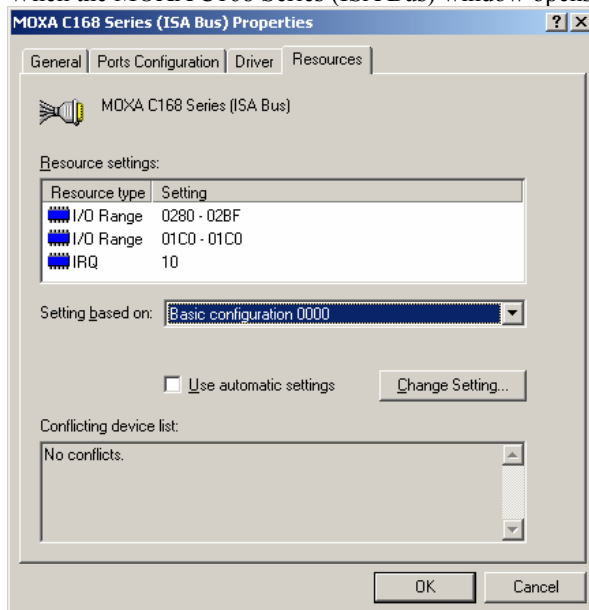
2. The **Device Manager** window will open. You can find **MOXA C168 Series** under **Multi-port serial adapters**, and **MOXA communication ports** under **Ports (COM & LPT)**.



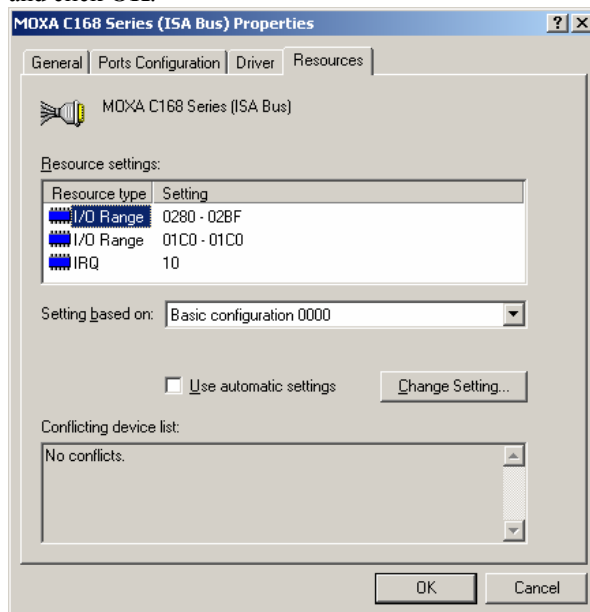
3. Select **MOXA C168 Series (ISA Bus)**, click the right mouse button, and select **Properties**.



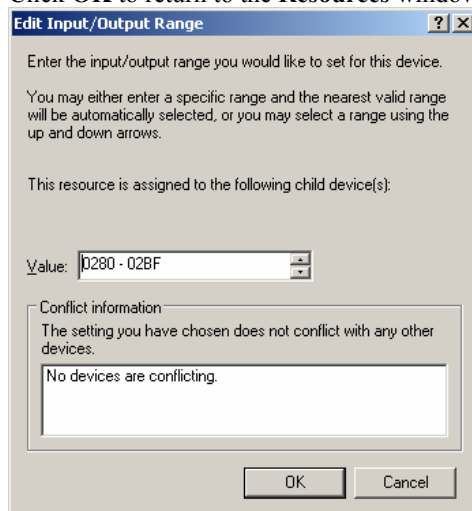
4. When the MOXA C168 Series (ISA Bus) window opens, click on the **Resources** tab.



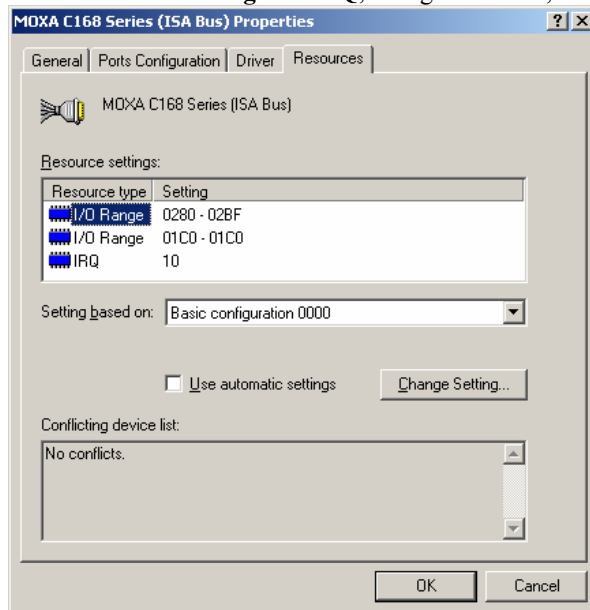
5. Select **Basic configuration 0000** under **Setting Based on:**, select **I/O Range** under **Resource settings:**, and click **OK**.



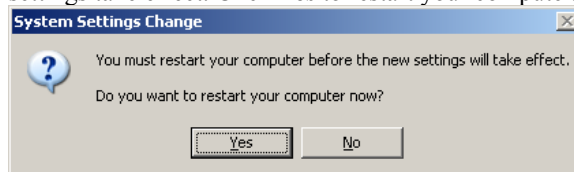
6. When the **Edit Input/Output Range** window opens, you can change the values of the board's parameters. Click **OK** to return to the **Resources** window.



7. If you need to change Interrupt Vector settings and IRQ settings as well, select the second **I/O range** under **Resource settings:** or **IRQ**, change the value, and then click **OK** to close the window.



8. The **System Settings Change** window will open next, asking you to restart your computer to let the new settings take effect. Click **Yes** to restart your computer.

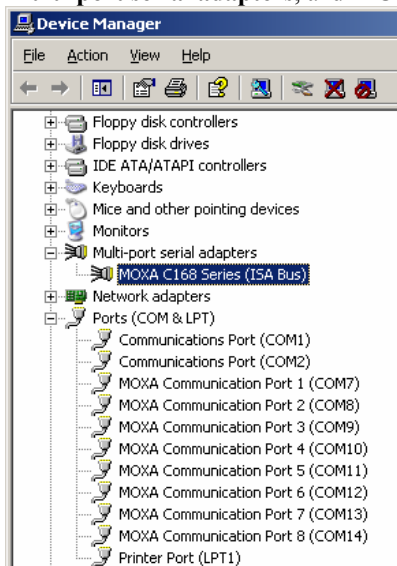


Checking the Installation

This chapter presents 3 approaches to examine whether the installation is successful. In this chapter, we use C168 Series as a example model.

Using Device Manager

1. Use your mouse to position the cursor over your desktop's **My computer** icon, click the right mouse button, and then select **Properties**.
2. When the **System Properties** window opens, click on the **Hardware** tab, and then click on **Device Manager**.
3. When the **Device Manager** window opens, you will be able to find **MOXA C168 Series** under **Multi-port serial adapters**, and **MOXA communication ports** under **Ports (COM & LPT)**.



4. If there are any special marks, such as a question mark or an exclamation mark in front of the icons, the installation of the board or the ports was not successful. Examine the **Event Log** for details.

Using PComm

The PComm Diagnostic program is a very useful tool for checking the status of MOXA's multiport boards. It provides internal and external testing of IRQ, Tx/D/RxD, UART, CTS/RTS, DTR/DSR, DTR/DCD, etc. This program can be used to make sure that MOXA's boards and ports are working properly.

To start this program, click on **Start → Programs → PComm Lite 2000 Ver. 1.0 → PComm Diagnostic**.

NOTE: If you do not have the PComm software, you can download the free version from Moxa's website at www.moxa.com.

Using Event Log

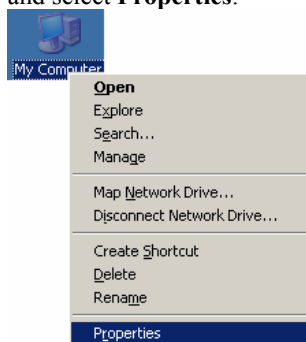
To use Event Log to check MOXA boards, click **Start → Settings → Control Panel → Administrative Tools → Event Viewer** to enter the Event Viewer program. You can find the latest warning messages relevant to MOXA's drivers under **System** category.

6

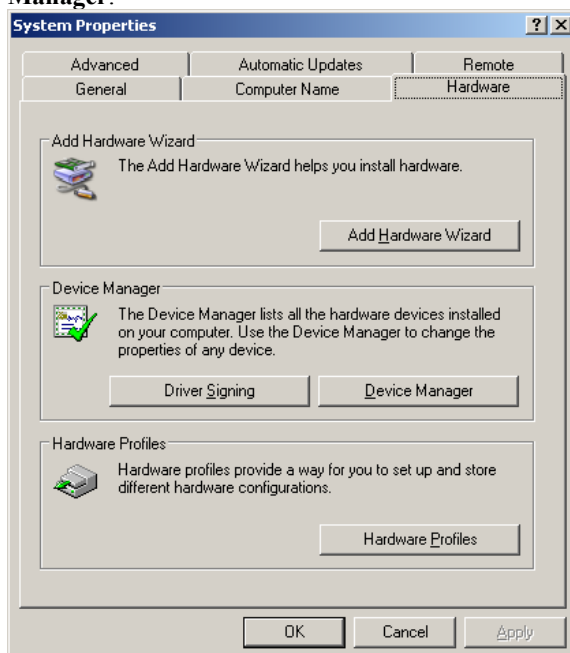
Uninstalling the Driver

This chapter includes information about uninstalling the driver. In this chapter, we use CP-114 Series (PCI bus) as the example model.

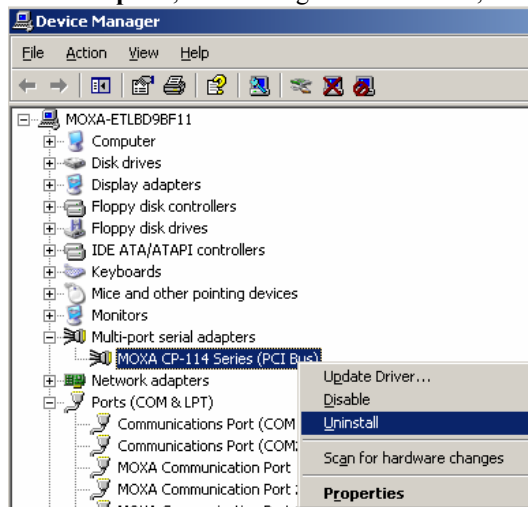
1. Use your mouse to position the cursor over your desktop's **My computer**, click the right mouse button, and select **Properties**.



2. When the **System Properties** window opens, click on the **Hardware** tab, and then click on **Device Manager**.



3. When the **Device Manager** window opens, select **MOXA CP-114 Series (PCI bus)** under **Multi-port serial adapters**, click the right mouse button, and select **Uninstall**.



4. When the following warning message appears, click **OK** to uninstall.

