

PHILIPS
NORELCO

Visapure



HP5250
Cordless Facial
Cleanser

IMPORTANT SAFEGUARDS

When using a battery-operated appliance, basic precautions should always be followed, including the following:

Read these instructions before using this appliance.

WARNING

To reduce the risk of injury to persons:

1. This appliance should never be used by, on, or near children or invalids. Keep out of reach of children.
2. Use this appliance for its intended household use as described in this manual. Do not use attachments not recommended by Philips Electronics North America Corporation.
3. Never operate this appliance if it is not working properly, or if it has been dropped or damaged. Return the appliance to an Authorized Norelco Service Location for examination and repair.
4. Keep the appliance and storage stand away from heated surfaces.
5. Never use while sleeping or drowsy.
6. Never drop or insert any object into any opening.
7. Do not use outdoors or operate where aerosol (spray) products are being used or where oxygen is being administered.
8. Never put the appliance or storage stand in direct sunlight or store at a temperature above 140°F.
9. When appliance is on, keep it away from the hair on your head to prevent the hair from tangling in the brush as injury may occur.
10. Only use this appliance only on the face. Do not use on other body areas.
11. Do not use this appliance with a damaged or broken brush. Replace brush head immediately.
12. If you have dry, chapped or sunburned skin, suffer from skin diseases or skin irritations, do not use this appliance.
13. If appliance will not be used on a regular basis, remove the battery to prevent possible damage due to chemical leakage. If battery does leak, remove it carefully. Do not allow bare skin to touch leaking fluid.
14. Dispose of battery properly. Do not incinerate. Battery may explode if overheated. Do not wrap in metal or aluminum foil. Wrap in newspaper before discarding.

SAVE THESE INSTRUCTIONS

Features

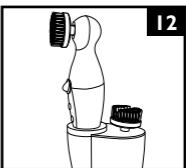
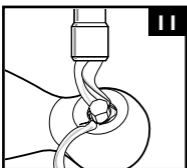
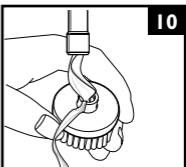
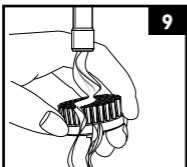
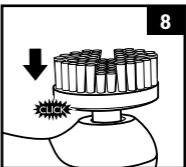
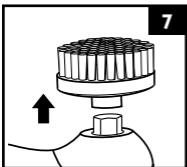
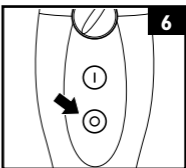
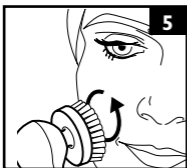
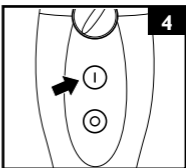
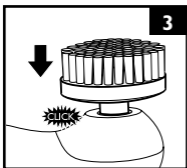
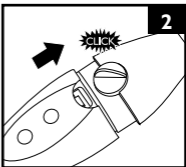
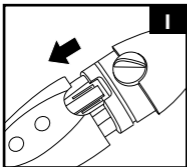
- A Connection Pin
 - B Cleansing Brush
 - C Exfoliating Brush
 - D On Button
 - E Off Button
 - F Storage Stand
- Battery Operated for Cordless Cleansing
- For ease of use
- Ergonomic Handle Design
- For holding comfort and handling ease
- Full Two-Year Warranty
- 60-Day Money-Back Guarantee

CONGRATULATIONS

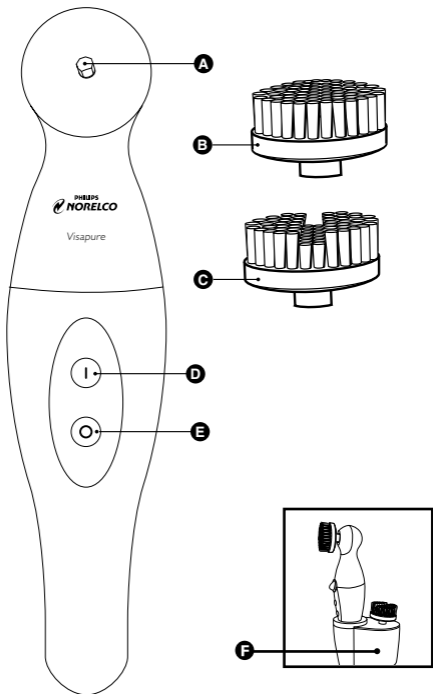
Your new Visapure Cordless Facial Cleanser with rotating brushes is designed to help make your beauty routine more effective and enjoyable. The curved surface of the Cleansing Brush follows the contour of your face, providing gentle and effective daily cleansing while the longer bristles of the Exfoliating Brush lift away impurities and gently exfoliates dead skin cells resulting in an effective deep facial cleansing. And your Visapure Cordless Facial Cleanser is water-resistant for the personal convenience of using it in the shower or bath. So start right now enjoying the new Visapure...your Cordless Facial Cleanser for smooth and radiant skin.

Inserting the Battery

- ▶ Make sure your hands are dry when inserting the battery.
 - ▶ This appliance requires 1 “AA” 1.5 volt alkaline battery (not included).
 - ▶ For optimum performance, it is recommended that you use alkaline batteries. Do not use Heavy Duty or Carbon Zinc batteries.
 - ▶ A fully charged alkaline battery can provide up to 30 minutes of cordless cleansing and exfoliating.
 - ▶ Keep the appliance at a temperature between 40°F and 100°F.
 - ▶ Do not keep the appliance in direct sunlight.
- 1** Open the battery compartment by pulling the lower end of the appliance away from the top end of the appliance (Fig. 1).
 - 2** Put the battery in the battery compartment making sure the (+) and (-) markings on the end of the battery match the (+) and (-) markings in the battery compartment.
 - 3** If the batteries are not inserted properly, the appliance will not work.
 - 4** Close the battery compartment by pushing both ends of the appliance together until you hear a click (fig. 2).



Features



Before Using

- Do not use this appliance if your skin is dry, chapped or if you suffer from skin diseases or skin irritations such as acne or sunburn.
- Skin conditions vary throughout the year so facial skin may be drier and more sensitive during the winter season. In that case, reduce your treatment time to less than 1 minute.
- Using this appliance should always feel pleasant on your skin. Do not press the brush against your skin too hard.
- When using this appliance on the neckline, reduce the treatment time as the neckline is more sensitive than facial skin.
- For best results, if you wear heavy make up on your face, it is recommended that you remove most of it before cleansing with this appliance.
- Regular cleaning of the appliance ensures optimal results and longer brush life.
- Always keep hair away from your face to prevent the hair from getting tangled in the brush.
- Never remove or replace brush heads when the appliance is on.
- This appliance is water-resistant and can be safely used in the shower or bath.

Cleansing

- ▶ The cleansing brush can be used with your regular facial bar soap or your preferred liquid cleansing product.
 - ▶ The curved surface of this brush follows the contour of your face, providing gentle and effective daily cleansing.
 - ▶ This appliance is water-resistant so you can use it in the shower or bath.
- 1** Press the cleansing brush down onto the connection pin until it locks into position. You will hear a click (Fig. 3).
 - 2** Use a headband or hair clips to pull hair away from your face to prevent your hair from making contact with the brush.
 - 3** Remove any heavy make-up from your face.
 - 4** Place a small amount of your favorite cleansing soap or lotion in your hand and manually rotate the brush gently in the lotion so that the brush head bristles are covered evenly.
- ▶ If using bar soap, dampen the brush head first with lukewarm water. The water will soften the soap to evenly cover the brush bristles.
- 5** Place the cleansing brush gently on your face.
 - 6** Press the ON button to turn the appliance on (Fig 4).
 - 7** Gently move the brush across your face making circular movements being careful to avoid sensitive areas such as the eyes and lips (Fig 5). Do not press the brush too hard against your skin.
- ▶ If desired, you can also gently cleanse your neckline but reduce the cleansing time as the neckline is more sensitive than facial skin.
- 8** Depending on the sensitivity of your skin, best cleansing results using this appliance are usually achieved within 1 to 2 minutes.

Note: Do not cleanse for longer than the recommended time. Remember that all skin types are different and cleansing with this appliance should always be a pleasant beauty routine.

- 9** Press the off button to turn the appliance off (Fig 6).
- 10** Rinse your face with lukewarm water to remove all cleansing residue.

Exfoliating

- ▶ The exfoliating brush can be used with your regular facial bar soap or liquid cleansing product.
- ▶ The longer bristles of the brush lift away impurities and gently exfoliate dead skin cells providing an effective deep facial cleansing.
- ▶ The neckline skin is more sensitive than facial skin. Do not use the exfoliating brush around the neckline as irritation may occur.

1 If necessary, first remove the cleansing brush head from the unit by pulling straight off the connection pin (Fig 7).

2 Press the exfoliating brush down onto the connection pin until it locks into position. You will hear a click (Fig 8).

3 Use a headband or hair clips to pull hair away from your face to prevent your hair from making contact with the brush.

4 For best exfoliating results, remove all make-up and impurities from your face before using the exfoliating brush.

5 Moisten your face with lukewarm water and apply your favorite scrubbing cleanser directly on your face avoiding the sensitive areas around eyes and lips.

▶ If you prefer to exfoliate with cleansing cream, put a small amount of cream or cleansing cream in the palm of your hand. Dampen the brush with lukewarm water and manually rotate the brush gently in the cream so that the brush head bristles are covered evenly.

▶ You can also apply cleansing cream directly to the exfoliating brush. First dampen the brush head with lukewarm water and then apply a small amount of cleansing cream evenly on the brush head bristles.

6 Place the exfoliating brush gently on your face.

- 7** Press the ON button to turn the appliance on (Fig 4).
- 8** Gently move the brush across your face making circular movements while being careful to avoid sensitive areas such as the eyes and lips (Fig 5). Do not press brush too hard against your skin.
- 9** Depending on the sensitivity of your skin, best exfoliating results using this appliance are usually achieved within 1 to 2 minutes.

Note: Do not exfoliate for longer than the recommended time. Remember that all skin types are different and exfoliating with this appliance should always be a pleasant beauty routine.

- 10** Press the off button to turn the appliance off (Fig 6).
- 11** Rinse your face with lukewarm water to remove all cleansing residue.

Cleaning and Storage

- ▶ For best results, clean the appliance and brush heads after each use.
- ▶ Never remove or replace brushes while the appliance is turned on.
- ▶ Do not apply pressure or hard objects to brush heads as this may damage the brush heads and reduce cleansing effectiveness.
- ▶ All parts can be washed in warm water. Never use any other cleaners such as alcohol, acetone, abrasive cleaning solutions, as it could cause damage to the appliance and brushes.
- ▶ When not in use, keep the appliance and brushes in the storage stand. You may also keep the appliance and brushes in the storage stand in the shower and tub area.

1 Rinse the inside of the brush heads by running under warm tap water (Fig 9).

You can also rinse this appliance under warm tap water.

2 Rinse the outside of the brush heads by running under warm tap water (Fig 10).

3 Turn the appliance ON and rinse any cleaning soap or lotion residuals from the connection pin (Fig 11).

4 Dry the appliance and brush heads with a soft towel being careful not to bend the brush bristles.

5 Place the clean, dry appliance in the storage stand. Leave one brush attached to the appliance and place the second brush onto the pin on the back part of the stand (Fig. 12).

Clean the stand occasionally with a soft cloth and warm water.

Brush Head Maintenance

- ▶ Clean the brush heads after every use for optimal performance (see “Cleaning”).
- ▶ When not in use, keep the appliance and brush heads in the storage stand.
- ▶ Do not use this appliance with a damaged or broken brush. Replace brush head immediately.
- ▶ With regular use, your brushes should be replaced every three to six months. Replacement brush heads may be purchased from the website, www.norelco.com.
- ▶ If the brush head bristles appear bent or distorted after use, simply rinse under warm tap water to return them to the original shape.
- ▶ If the brush head bristles do not return to their original shape after rinsing under water, replace the brush immediately.

Using a damaged or worn brush head may irritate your skin.

This appliance has no other user-serviceable parts. Any other service should be performed by an Authorized Norelco Service Location.

Assistance

For assistance or the Authorized Norelco Service Location nearest you, call toll free:

1-800-243-3050

or visit our website: www.norelco.com

Authorized Norelco Service Location information is available 24 hours a day, 7 days a week.

Accessories

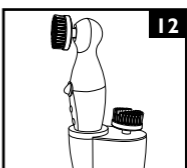
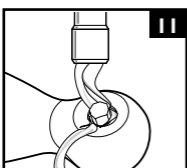
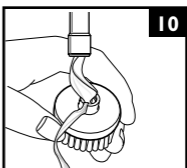
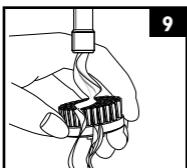
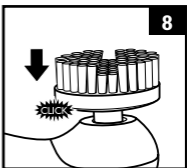
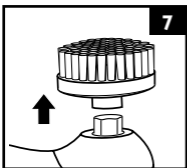
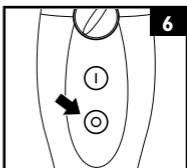
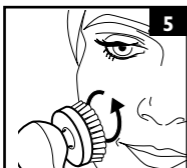
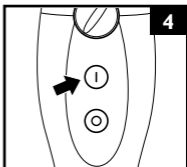
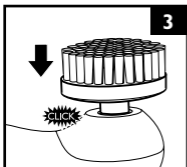
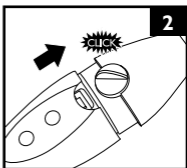
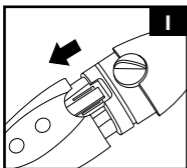
▶ Replacement Cleansing Brush

Model HP5950 - For optimal cleansing results, replace your cleansing brush every 3 to 6 months.

▶ Replacement Exfoliating Brush

Model HP5951 - For optimal exfoliating results, replace your exfoliating brush every 3 to 6 months.

▶ Norelco Accessories may be purchased at an Authorized Norelco Service Location or on our website www.norelco.com



Full Two-Year Warranty

Philips Electronics North America Corporation warrants each new Norelco Product, Model HP5250, against defects in materials or workmanship for a period of two years from the date of purchase, and agrees to repair or replace any defective product without charge.

IMPORTANT: This warranty does not cover damage resulting from accident, misuse or abuse, lack of reasonable care, the affixing of any attachment not provided with the product or loss of parts or subjecting the product to any but the specified voltage.* Use of unauthorized replacement parts will void this warranty.

PHILIPS ELECTRONICS NORTH AMERICA CORPORATION WILL NOT PAY FOR WARRANTY SERVICE PERFORMED BY A NON-AUTHORIZED REPAIR SERVICE AND WILL NOT REIMBURSE THE CONSUMER FOR DAMAGE RESULTING FROM WARRANTY SERVICE PERFORMED BY A NON-AUTHORIZED REPAIR SERVICE. NO RESPONSIBILITY IS ASSUMED FOR ANY SPECIAL, INCIDENTAL OR CONSEQUENTIAL DAMAGES.

In order to obtain warranty service, simply take or ship the product postage prepaid to the nearest Authorized Norelco Service Location. It is suggested that for your protection you return shipments of product by insured mail, insurance prepaid. Damage occurring during shipment is not covered by this warranty.

NOTE: No other warranty, written or oral, is authorized by Philips Electronics North America Corporation.

This warranty gives you specific legal rights, and you may also have other rights which vary from state to state. Some states do not allow the exclusion or limitation of incidental or consequential damages, so the above exclusion and limitations may not apply to you.

*Read enclosed instructions carefully.

Manufactured for:

Philips Domestic Appliances and Personal Care Company
A Division of Philips Electronics North America Corporation
1010 Washington Blvd., Stamford, CT 06912-0015



This symbol on the product's nameplate means it is listed by Underwriters' Laboratories, Inc.

Norelco is a Registered Trademark of Philips Electronics North America Corporation.

Visapure is a Trademark of Philips Electronics North America Corporation.

PHILIPS is a Registered Trademark of Koninklijke Philips Electronics N.V.

© 2005 Philips Electronics North America Corporation.

All Rights Reserved.