

EES-5718 Series

Intel® Celeron® M Micro PC

Quick Reference Guide



1st Ed – 16 September 2005

FCC Statement



THIS DEVICE COMPLIES WITH PART 15 FCC RULES. OPERATION IS SUBJECT TO THE FOLLOWING TWO CONDITIONS:

- (1) THIS DEVICE MAY NOT CAUSE HARMFUL INTERFERENCE.
- (2) THIS DEVICE MUST ACCEPT ANY INTERFERENCE RECEIVED INCLUDING INTERFERENCE THAT MAY CAUSE UNDESIRE OPERATION.

THIS EQUIPMENT HAS BEEN TESTED AND FOUND TO COMPLY WITH THE LIMITS FOR A CLASS "A" DIGITAL DEVICE, PURSUANT TO PART 15 OF THE FCC RULES.

THESE LIMITS ARE DESIGNED TO PROVIDE REASONABLE PROTECTION AGAINST HARMFUL INTERFERENCE WHEN THE EQUIPMENT IS OPERATED IN A COMMERCIAL ENVIRONMENT. THIS EQUIPMENT GENERATES, USES, AND CAN RADIATE RADIO FREQUENCY ENERGY AND, IF NOT INSTALLED AND USED IN ACCORDANCE WITH THE INSTRUCTION MANUAL, MAY CAUSE HARMFUL INTERFERENCE TO RADIO COMMUNICATIONS.

OPERATION OF THIS EQUIPMENT IN A RESIDENTIAL AREA IS LIKELY TO CAUSE HARMFUL INTERFERENCE IN WHICH CASE THE USER WILL BE REQUIRED TO CORRECT THE INTERFERENCE AT HIS OWN EXPENSE.

Notice

This guide is designed for experienced users to setup the system within the shortest time. For detailed information, please always refer to the electronic user's manual.

Copyright Notice

Copyright © 2005 Evalue Technology Inc., ALL RIGHTS RESERVED.

No part of this document may be reproduced, copied, translated, or transmitted in any form or by any means, electronic or mechanical, for any purpose, without the prior written permission of the original manufacturer.

Trademark Acknowledgement

Brand and product names are trademarks or registered trademarks of their respective owners.

Disclaimer

Evalue Technology Inc. reserves the right to make changes, without notice, to any product, including circuits and/or software described or contained in this manual in order to improve design and/or performance. Evalue Technology assumes no responsibility or liability for the use of the described product(s), conveys no license or title under any patent, copyright, or masks work rights to these products, and makes no representations or warranties that these products are free from patent, copyright, or mask work right infringement, unless otherwise specified. Applications that are described in this manual are for illustration purposes only. Evalue Technology Inc. makes no representation or warranty that such application will be suitable for the specified use without further testing or modification.

Life Support Policy

Evalue Technology's PRODUCTS ARE NOT FOR USE AS CRITICAL COMPONENTS IN LIFE SUPPORT DEVICES OR SYSTEMS WITHOUT THE PRIOR WRITTEN APPROVAL OF Evalue Technology Inc.

As used herein:

1. Life support devices or systems are devices or systems which, (a) are intended for surgical implant into body, or (b) support or sustain life and whose failure to perform, when properly used in accordance with instructions for use provided in the labeling, can be reasonably expected to result in significant injury to the user.
2. A critical component is any component of a life support device or system whose failure to perform can be reasonably expected to cause the failure of the life support device or system, or to affect its safety or effectiveness.

A Message to the Customer

Evalue Customer Services

Each and every Evalue's product is built to the most exacting specifications to ensure reliable performance in the harsh and demanding conditions typical of industrial environments. Whether your new Evalue device is destined for the laboratory or the factory floor, you can be assured that your product will provide the reliability and ease of operation for which the name Evalue has come to be known.

Your satisfaction is our primary concern. Here is a guide to Evalue's customer services. To ensure you get the full benefit of our services, please follow the instructions below carefully.

Technical Support

We want you to get the maximum performance from your products. So if you run into technical difficulties, we are here to help. For the most frequently asked questions, you can easily find answers in your product documentation. These answers are normally a lot more detailed than the ones we can give over the phone. So please consult the user's manual first.

To receive the latest version of the user's manual; please visit our Web site at:

<http://www.evaluate-tech.com/>

If you still cannot find the answer, gather all the information or questions that apply to your problem, and with the product close at hand, call your dealer. Our dealers are well trained and ready to give you the support you need to get the most from your Evaluate's products. In fact, most problems reported are minor and are able to be easily solved over the phone.

In addition, free technical support is available from Evaluate's engineers every business day. We are always ready to give advice on application requirements or specific information on the installation and operation of any of our products. Please do not hesitate to call or e-mail us.

Headquarters

Evaluate Technology Inc.

7F, 228, Lian-cheng Road,
Chung Ho City, Taipei,
Taiwan

Tel : +886-2-8226-2345

Fax : +886-2-8226-2777

<http://www.evaluate-tech.com>

E-mail: service@evaluate-tech.com

China Branch Office

Evaluate Technology Shanghai Inc.

Room 909, 9F, Section B, No.900,
Yisan Road, Caohejing Hi-tech Park,
Shanghai 200233, China

Tel : +86-21-5423-4170

Fax : +86-21-5423-4171

<http://www.evaluate-tech.com>

E-mail: service.china@evaluate-tech.com

Europe Branch Office

Evaluate Europe A/S

Stenholttsvej 13,
3480 Fredensborg,
Denmark

Tel : +45-7025-0310

Fax : +45-4975-5026

<http://www.evaluate-tech.com>

E-mail: service.europe@evaluate-tech.com

US Branch Office

Evaluate Technology Inc.

Suite 210, 200 Tornillo Way,
Tinton Falls, NJ 07712
USA

Tel: +1-732-578-0200

Fax: +1-732-578-0250

<http://www.evaluate-tech.com>

E-mail: service.usa@evaluate-tech.com

Product Warranty

Evalue warrants to you, the original purchaser, that each of its products will be free from defects in materials and workmanship for two years from the date of purchase.

This warranty does not apply to any products which have been repaired or altered by persons other than repair personnel authorized by Evalue, or which have been subject to misuse, abuse, accident or improper installation. Evalue assumes no liability under the terms of this warranty as a consequence of such events. Because of Evalue's high quality-control standards and rigorous testing, most of our customers never need to use our repair service. If any of Evalue's products is defective, it will be repaired or replaced at no charge during the warranty period. For out-of-warranty repairs, you will be billed according to the cost of replacement materials, service time, and freight. Please consult your dealer for more details. If you think you have a defective product, follow these steps:

1. Collect all the information about the problem encountered. (For example, CPU type and speed, Evalue's products model name, hardware & BIOS revision number, other hardware and software used, etc.) Note anything abnormal and list any on-screen messages you get when the problem occurs.
2. Call your dealer and describe the problem. Please have your manual, product, and any helpful information available.
3. If your product is diagnosed as defective, obtain an RMA (return material authorization) number from your dealer. This allows us to process your good return more quickly.
4. Carefully pack the defective product, a complete Repair and Replacement Order Card and a photocopy proof of purchase date (such as your sales receipt) in a shippable container. A product returned without proof of the purchase date is not eligible for warranty service.
5. Write the RMA number visibly on the outside of the package and ship it prepaid to your dealer.

Contents

1. Getting started	7
1.1 Safety Precautions	7
1.2 Packing List	7
1.3 System Overview.....	8
1.3.1 Front View.....	8
1.3.2 Rear View	8
1.4 System Specifications	9
1.5 System Dimensions.....	11
2. Hardware Configuration	12
2.1 Jumper and Connector Setting, Driver and BIOS installing	13
2.2 Installing Hard Disk.....	13
2.3 Installing System Memory	14
2.4 Installing CompactFlash	15

1. Getting started

1.1 Safety Precautions

Warning!



Always completely disconnect the power cord from your chassis whenever you work with the hardware. Do not make connections while the power is on. Sensitive electronic components can be damaged by sudden power surges. Only experienced electronics personnel should open the PC chassis.

Caution!



Always ground yourself to remove any static charge before touching the CPU card. Modern electronic devices are very sensitive to static electric charges. As a safety precaution, use a grounding wrist strap at all times. Place all electronic components in a static-dissipative surface or static-shielded bag when they are not in the chassis.

1.2 Packing List

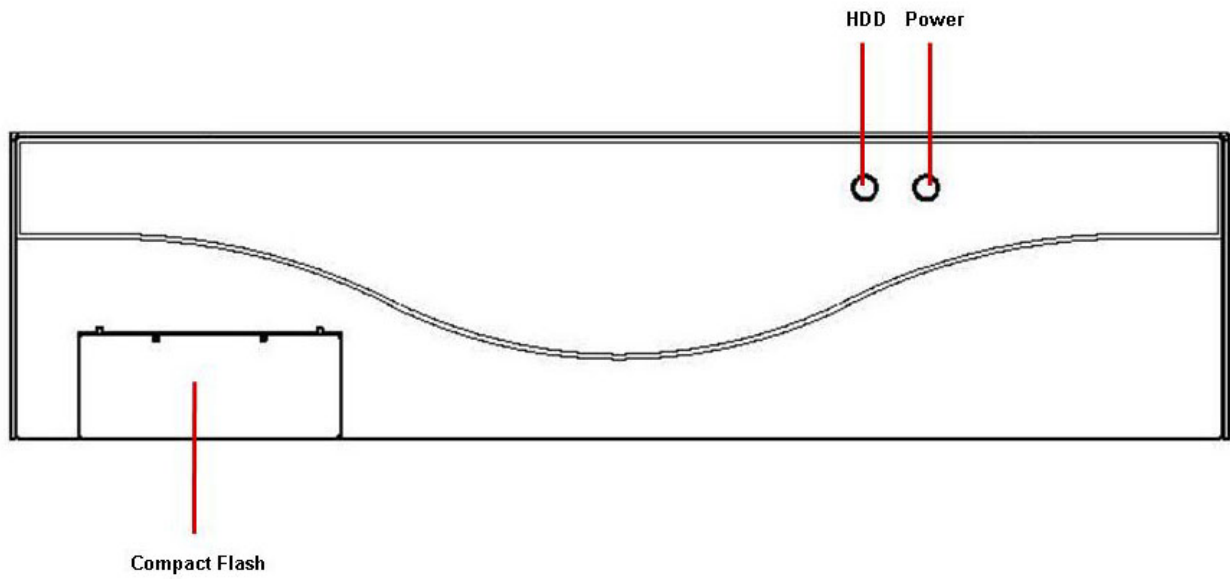
- 1 x Intel® Celeron® M Micro PC
- 1 x Quick Reference Guide
- 1 x CD/DVD-ROM contains the followings:
 - User's Manual (this manual in PDF file)
 - Ethernet driver and utilities
 - VGA drivers and utilities
 - Audio drivers and utilities
- 1 x Cable set includes the followings:
 - 1 x PS/2 keyboard and mouse Y cable (6P-6P-6P, Mini-DIN)
 - 1 x AC/DC 50W power adapter (**Optional**)
(90~264V/47~63 Hz/+12V/4.16A)



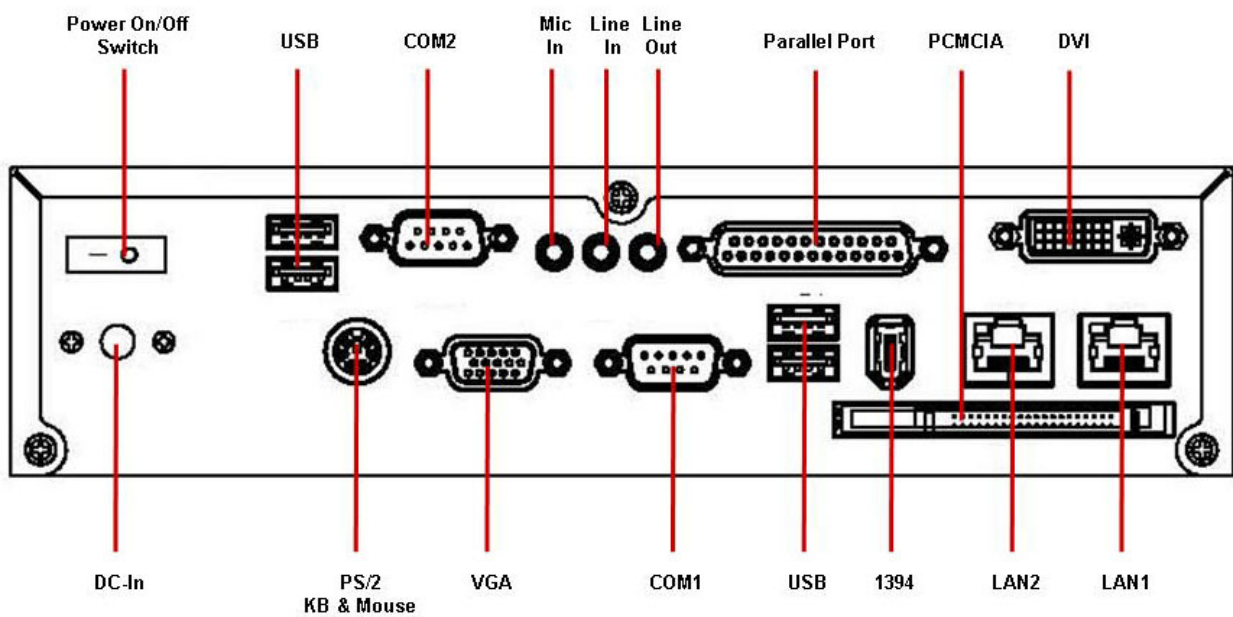
If any of the above items is damaged or missing, contact your retailer.

1.3 System Overview




1.3.1 Front View




1.3.2 Rear View



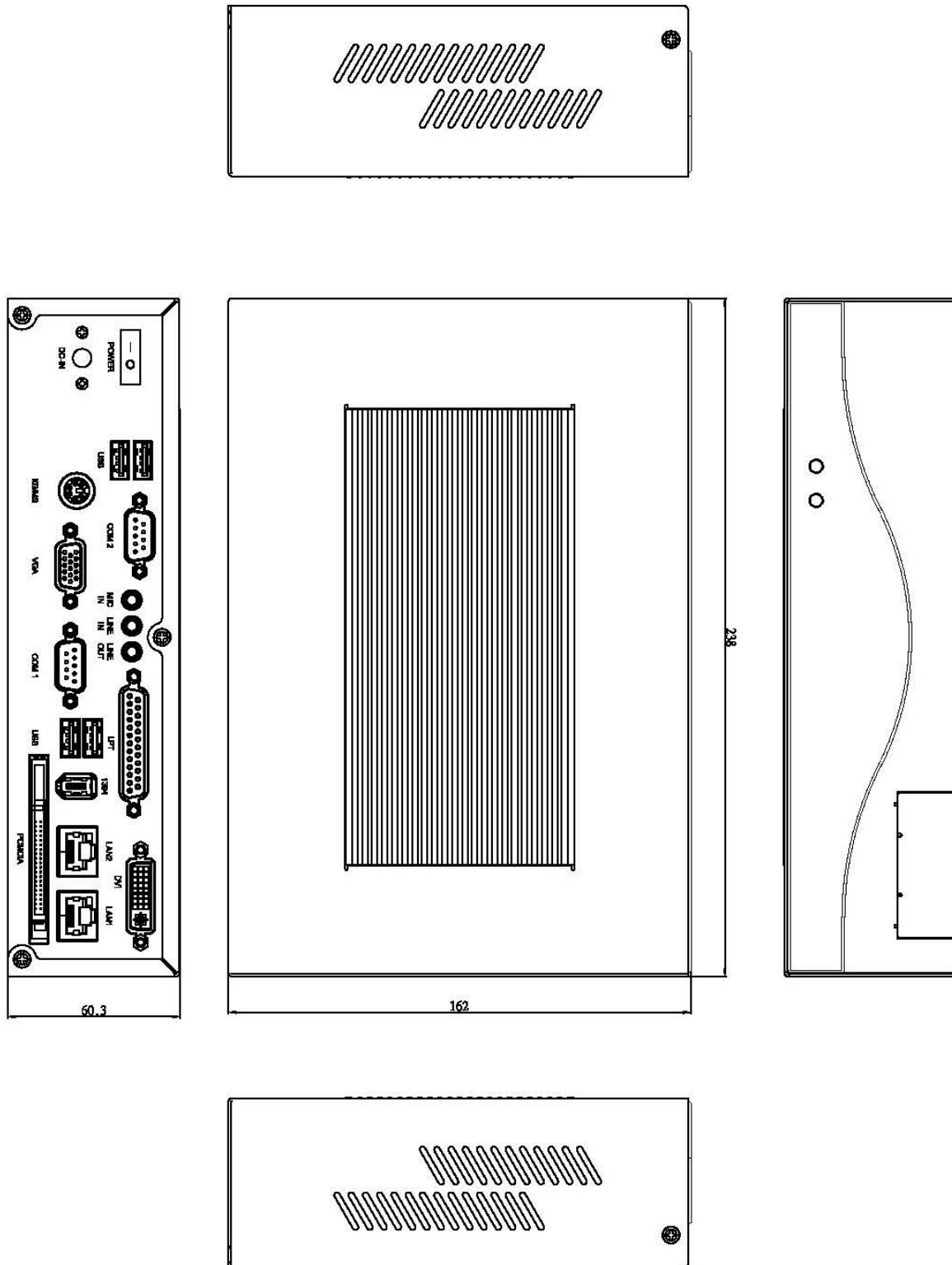
1.4 System Specifications

System 	
CPU	Onboard Mobile Intel® µFC-BGA 479 Celeron 600 MHz with 0K L2 Cache Optional Celeron 600 MHz with 512K Cache or Celeron 1.0 GHz with 512K Cache
BIOS	Award 512 KB Flash BIOS
System Chipset	Intel® RG82852GM GMCH/FW2801DB ICH4
I/O Chipset	Winbond W83627HF-AW
System Memory	One 184-pin DIMM socket supports up to 1 GB DDR 200/266 SDRAM
SSD	One CompactFlash Type I/II socket
Watchdog Timer	Reset: 1 sec.~255 min. and 1 sec. or 1 min./step
H/W Status Monitor	Monitoring system temperature, voltage, and cooling fan status. Auto throttling control when CPU overheats
Display	Intel® 82852GM GMCH integrated Extreme Graphics 2 controller with 64 MB display memory
Audio	AC97 Codec, VIA VT1616 supports 5.1 CH Audio
Ethernet	LAN 1: Intel® 82562ET or 82551ER 100Base-Tx Fast Ethernet controller LAN 2: Intel® 82562ET or 82551ER 100Base-Tx; optional Intel® 82540EM 1000Base-T Fast Ethernet controller
System Indicators	2 LED indicators show the power and HDD LAN status shown on the back panel
HDD Type	Mounting kit for one 2.5" HDD
Expansion	One CardBus Type II slot
External I/O Ports 	
COM Port	1 x RS-232, 1 x RS-232/422/485
LAN Port	2 x RJ-45
Audio Port	Mic-in, Line-in, Line-out
USB Port	4 x USB 2.0
IEEE 1394 Port	1x IEEE-1394A
Parallel Port	1 x DB-25
Mouse & KB	1 x PS/2 mini DIN
Power Supply Unit 	
Power Input	DC-in 12 ~ 24 V, 40 W (min.)

EES-5718 Series

Environment & Mechanical 	
Operating Temperature	0 to 45°C (32~113°F)
Storage Temperature	-20 to +75°C (-4~167°F)
Relative Humidity	5 to 90% @ 45°C (113°F), relative humidity, non-condensing
Mounting	Desktop
Dimension (W x H x D)	9.37" x 6.3" x 2.36" (238 mm x 160 mm x 60mm)
Weight	4.4 lbs (2 Kgs)

1.5 System Dimensions



(Unit : mm)

2. Hardware Configuration

2.1 Jumper and Connector Setting, Driver and BIOS installing

- Please refer to ECM-5716/5718 Quick Installation Guide or User's Manual.



Note: If you need more information, please visit our website: <http://www.evalue-tech.com>

2.2 Installing Hard Disk



Step 1. Unscrew two screws as indicated and take off the chassis cover.



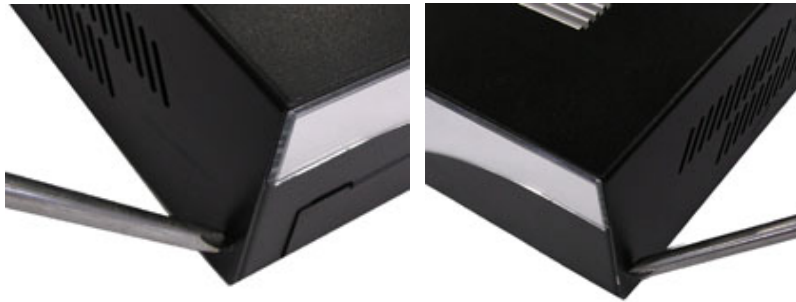
Step 2. Place HDD in the tray and fasten four screws.

Step 3. Put the cover back and fasten four screws to complete the installation.



Note: Always power down your system when removing the chassis cover!

2.3 Installing System Memory



Step 1. Unscrew five screws as indicated and take off the chassis cover.



Step 2. Install the SDRAM.



Note: Always power down your system when removing the chassis cover!

2.4 Installing CompactFlash



Step 1. Unscrew a screw and take off the chassis cover as indicated.



Step 2. Install the CF card.

Step 3. Put the cover back and fasten the screw to complete the installation.



Note: Always power down your system when removing the chassis cover!

