

Aztech

Easy Start Guide

HL108E HomePlug AV

© Copyright 2007 All rights reserved.

No part of this document may be reproduced, republished, or retransmitted in any form or by any means whatsoever, whether electronically or mechanically, including, but not limited to, by way of photocopying, recording, information recording, or through retrieval systems without the express written permission. We reserve the right to revise this document at any time without the obligation to notify any person and/or entity. All other company or product names mentioned are used for identification purposes only and may be trademarks of their respective owners.

Contents

About the Product	4
Package Contents	4
Requirements.....	4
Device Design	5
Getting Started.....	6
Planning your Network	7
Local Network.....	7
Gaming Network.....	7
Entertainment Network.....	8
Media Network	8
Remove/Disable Conflicts	9
TCP/IP.....	9
Internet Properties.....	10
Connecting the Device.....	10
About HL108E HomePlug AV Utility	11
Requirements.....	11
Software	11
Hardware.....	11
Installation	12
Opening HL108E HomePlug AV Utility	12
HL108E HomePlug AV Utility User Interface	13
Home	13
Private Network Name.....	14
Quality of Service.....	16
Devices	17
Firmware Upgrade	18
Regulatory Compliance Notices.....	19
FCC Statement	19
European Regulations	19

About the Product

HomePlug AV is a device that utilizes the existing electrical wiring in the house as a path to create a secured network of computers and Ethernet devices. HomePlug AV is ready to use out of the box and it does not require a device driver to work. With a maximum data rate of 200 Mbps, HomePlug AV can reliably handle high requirement applications like Internet telephony, streaming of high quality video, and Internet simultaneously.

HomePlug AV is operating system independent. It can be connected to any device using Windows, Macintosh, or Linux operating systems. Encryption is built-in the HomePlug AV design. To change the encryption settings, however, you need a computer with a Windows operating system.

Package Contents

The package contains the following items:

- 1 HomePlug AV for Single Pack or 2 HomePlug AVs for Twin Pack
- 1 Network cable for Single Pack or 2 network cables for Twin Pack
- Resource CD
- Easy Start Guide

Requirements

HomePlug AV requires an Ethernet port to connect with another device.

Device Design

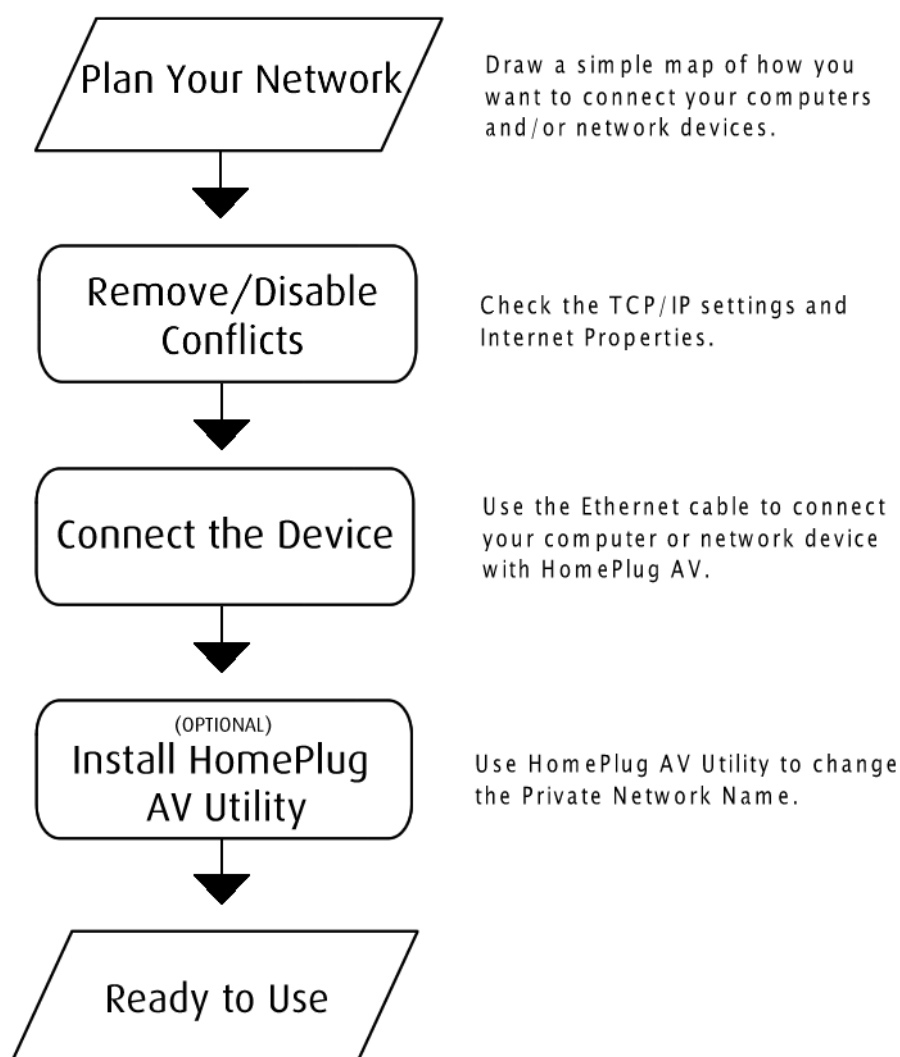
HomePlug AV has three LED indicators and an Ethernet port.



Label	Status	Description/ Function
PWR	On/Off	Power is on/off.
PL-ACT	On/Off	Another HomePlug is detected/not detected.
	Flashes	PL-ACT flashes whenever there is data transmission within the network. However, the PL-ACT for the HomePlug AV device that powers on first will stay on even when data is being transmitted.
ETH-LINK/ACT OFF	On/Off	Ethernet is connected/not connected.
	Flashes	Sending/receiving data.
Ethernet Port		Accepts either cross or straight cable.

Getting Started

Setting up the device is easy. The flowchart below provides an outline of the steps you need to go through. Some steps are required while some are optional. There are brief descriptions beside each step to help you along. Detailed instructions are provided in the subsequent pages.

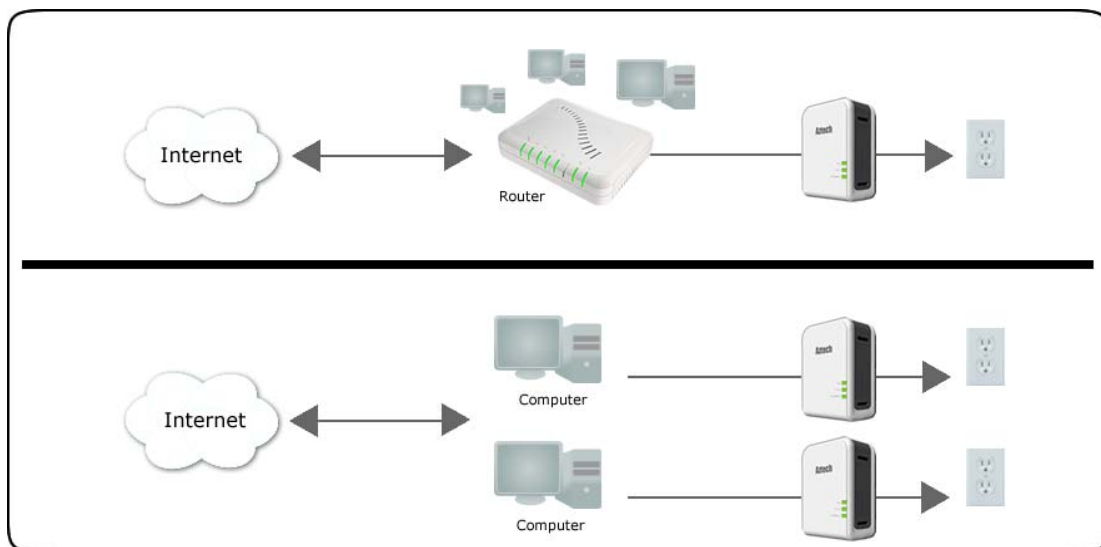


Planning your Network

Here are ideas on how you can use HomePlug AV.

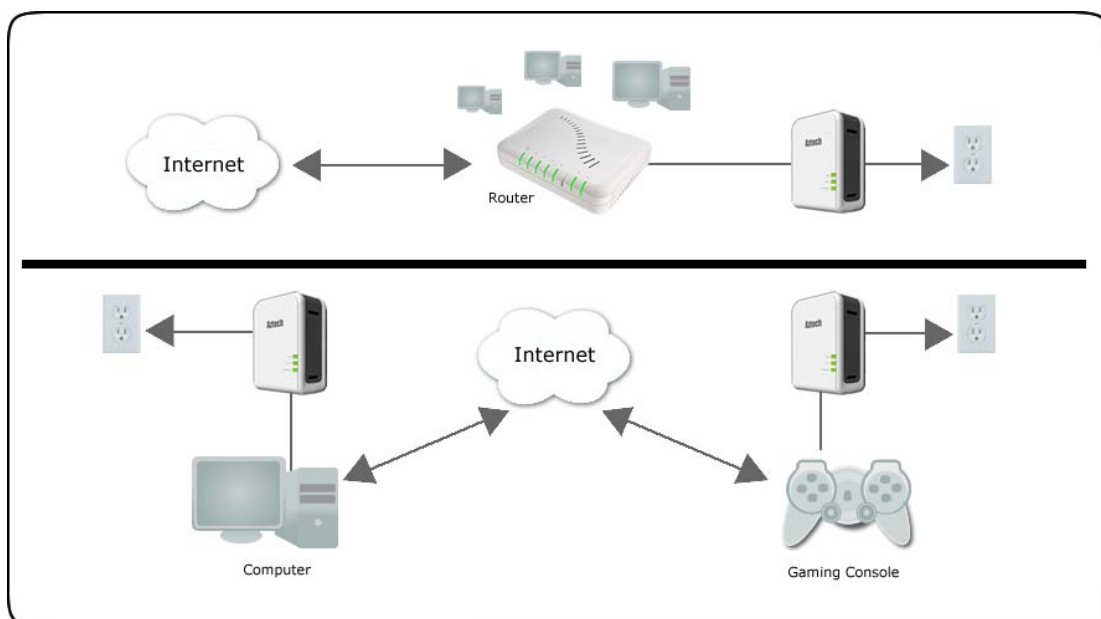
Local Network

Share ultra fast Internet connection with any computer wherever it is in the house.



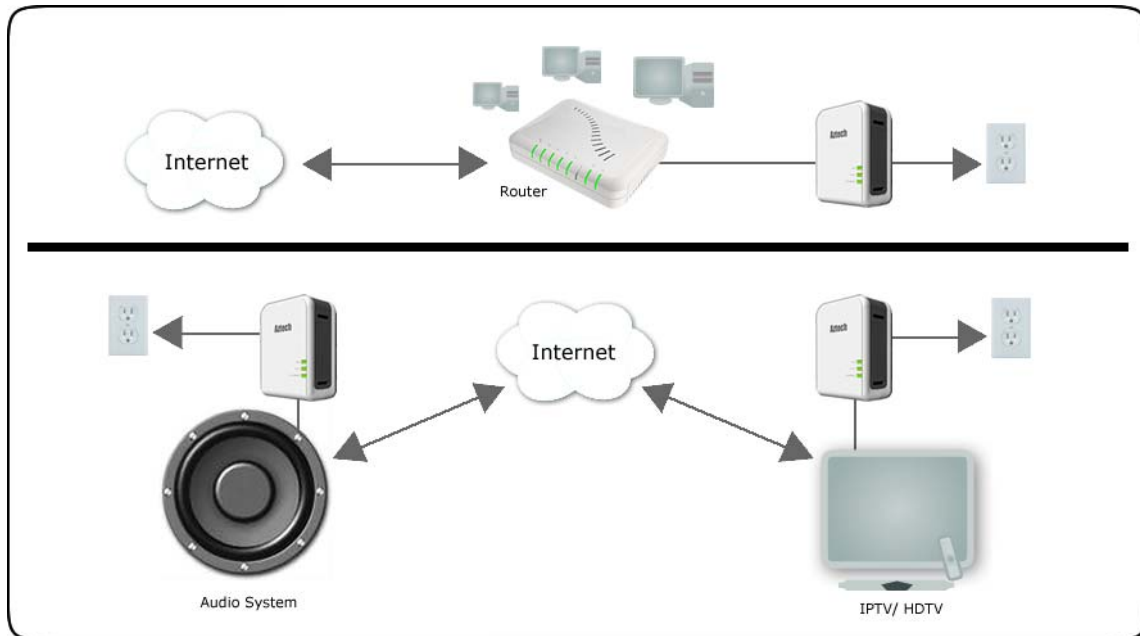
Gaming Network

Connect your gaming console into the Internet and compete with other online players.



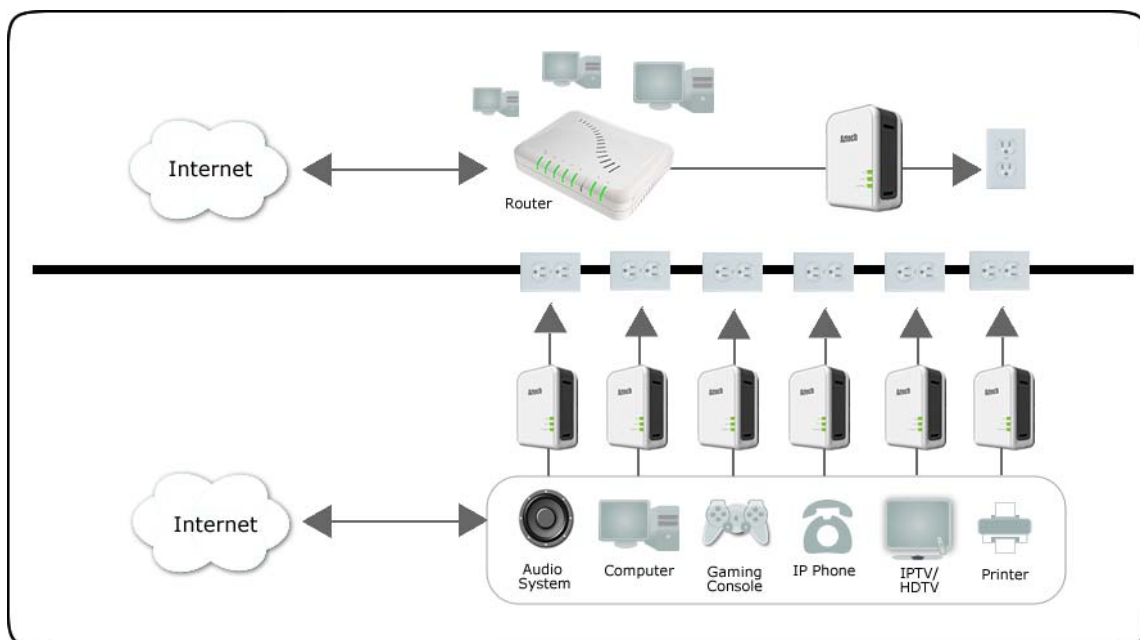
Entertainment Network

Experience the distinction of viewing and listening to media files using your entertainment system.



Media Network

Realize your high-tech lifestyle by converging your IP devices into a single network.



Remove/Disable Conflicts

You may need to check the TCP/IP and Internet properties to make sure there are no conflicts with the way devices in the network are identified.

TCP/IP

HomePlug AV's IP Address should be obtained automatically.

To set the TCP/IP properties:

1. Select Start > Run. This opens the Run dialog box.
2. Enter control ncpa.cpl and then click OK. This opens the Network Connections in your computer.
3. Right-click LAN and then select Properties. This opens the Local Area Connection Properties dialog box.
4. Select Internet Protocol (TCP/IP) and then click Properties. This opens the Internet Protocol (TCP/IP) dialog box.
5. Select Obtain an IP address automatically.
6. Click OK to close the Internet Protocol (TCP/IP) dialog box.
7. Click OK to close the Local Area Connection Properties dialog box.

Internet Properties

To set the Internet Properties:

1. Select Start > Run. This opens the Run dialog box.
2. Enter control inetcpl.cpl and then click OK. This opens the Internet Properties dialog box.
3. Click Connections tab.
4. In the Dial-up and Virtual Private Network settings pane, select Never dial a connection.
5. Click OK to close the Internet Properties dialog box.

Connecting the Device

HomePlug AV does not require the installation of a device driver. It is a plug-and-play device that can be used right after connecting the network cables and plugging it into a power outlet.

To connect HomePlug AV with your computer:

1. Insert one end of the network cable into your computer's Ethernet port.
2. Insert the other end of the network cable into HomePlug AV.
3. Plug HomePlug AV into a power outlet.

About HL108E HomePlug AV Utility

HL108E HomePlug AV Utility is a software application that allows you to configure HomePlug AV. It is mainly used for changing the Private Network Name and detecting other HomePlug AV's in the network. Installation is straightforward and the user interface is easy to use.

Note: The .NET Framework is required to open HL108E HomePlug AV Utility.

Requirements

Your computer must meet the following requirements:

Software

- Windows 98SE, ME, 2000, or XP 32-bit, and Vista 32-bit
- .NET Framework 1.1 or above

Hardware

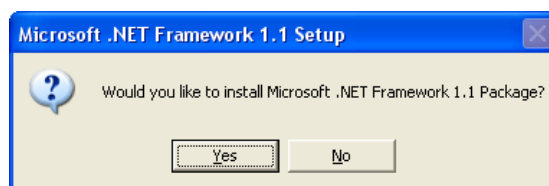
- 300 MHz Processor
- Network Interface Card
- CD-ROM
- 128 Mb of free hard disk space
- 128 Mb of RAM

Installation

To install HL108E HomePlug AV Utility:

1. Insert the Resource CD that comes with HomePlug AV into the CD-ROM drive.
2. If the installer does not launch automatically, select Start > Run, enter D:\Setup.exe (where D: is your CD-ROM drive), and then click OK.
3. Follow the instructions on the Utility.

Two applications will be installed in your computer - HL108E HomePlug AV Utility will be installed first followed by .NET Framework. The installer detects any version of .NET Framework in your computer. If .NET Framework is not installed, a dialog box opens to ask if you would like to install .NET Framework 1.1. Click Yes. The .NET Framework will not be installed if a version is already in your computer.



.NET Framework 1.1 Setup

Notes:

- When you configure local and remote HomePlug AVs, it is recommended to keep a list of your HomePlug AV Device ID's. This is printed at the back of the device.
- In case you cannot connect into the network or Internet, you may have to power cycle the device. To power cycle, disconnect and reconnect HomePlug AV from the power outlet.

Opening HL108E HomePlug AV Utility

To open HL108E HomePlug AV Utility:

- Right-click HL108E HomePlug AV Utility desktop shortcut and then select Open.
- Or, select Start > All Programs > Aztech HomePlug > HL108E HomePlug AV > Aztech HL108E Utility.

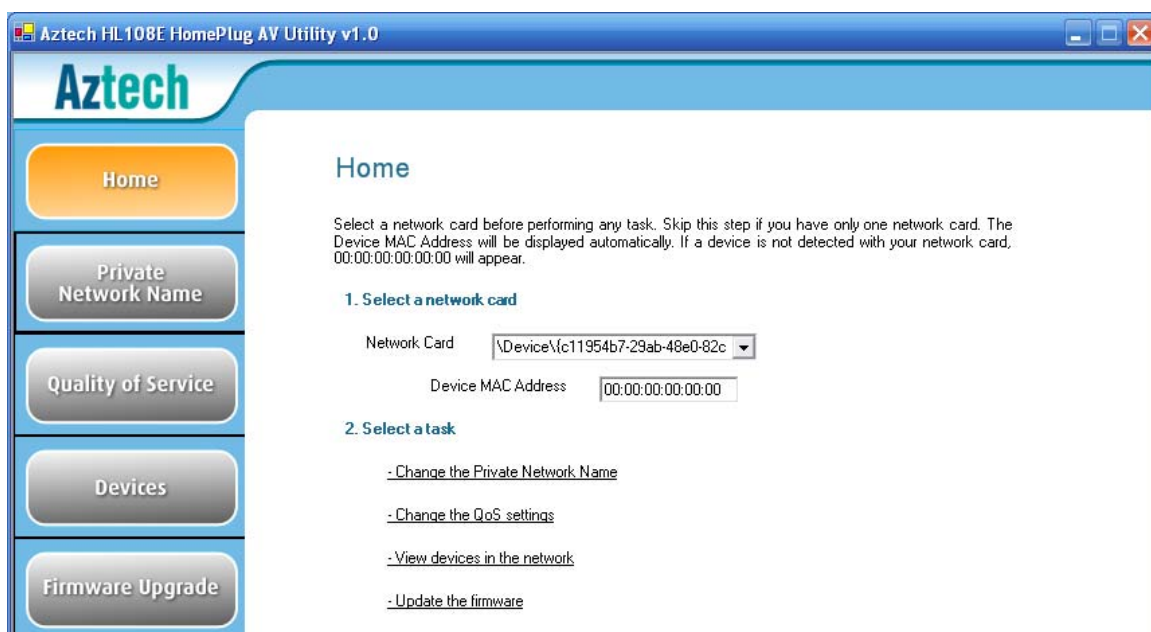
HL108E HomePlug AV Utility User Interface

The HL108E HomePlug AV Utility user interface is divided into tabs. These tabs include:

- Home
- Private Network Name
- Quality of Service
- Devices
- Firmware Upgrade

Home

Home provides a list of all the possible tasks you can perform in this Utility. To start a task, you need to specify which network card is connected to your HomePlug AV device. This is most helpful when you have more than one network card in your computer.

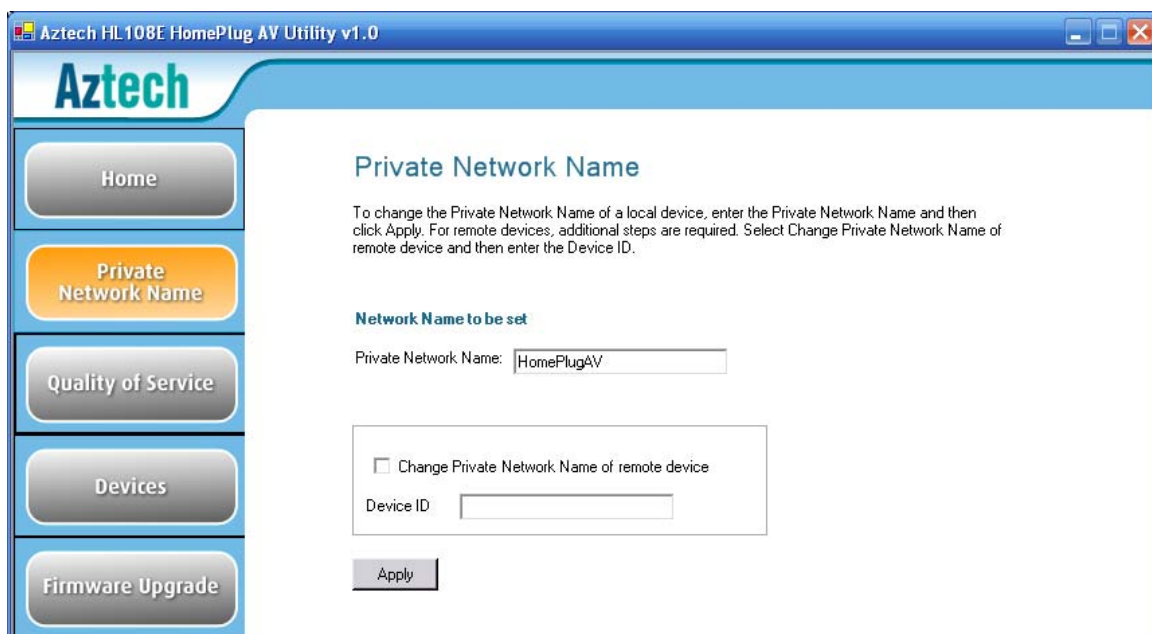


Home

Private Network Name

Private Network Name provides the function to change the Private Network Name of local and remote HomePlug AVs. A Private Network Name acts as an authentication mechanism against network eavesdroppers. By default, the Private Network Name is HomePlugAV.

Always remember that a HomePlug AV can only communicate with other HomePlug AVs using a similar Private Network Name. If you intend to create multiple networks, you can assign different Private Network Names among your devices. You have to, however, make sure that at least two HomePlug AVs have similar Private Network Names. A HomePlug AV that uses a unique Private Network Name will not be able to communicate with other HomePlug AVs.



Private Network Name

Local Private Network Name

Local Private Network Name refers to the Private Network Name of the HomePlug AV, which is directly connected to the computer running HL108E HomePlug AV Utility.

To change the local Private Network Name:

1. Open HL108E HomePlug AV Utility.
2. Click Private Network Name.
3. Enter the new Private Network Name. This field is case sensitive.
4. Click Apply. HomePlug AV restarts and saves the new Private Network Name.

Remote Private Network Name

Without leaving your computer, you can change the Private Network Name of remote HomePlug AV devices, provided they are connected to the network using the same Private Network Name as your local HomePlug AV.

To change a remote Private Network Name:

1. Open HL108E HomePlug AV Utility.
2. Click Private Network Name.
3. Enter the new Private Network Name. This field is case sensitive.
4. Select Change Private Network Name of remote device.
5. Enter the Device ID of the remote device. The Device ID is printed on the device.
6. Click Apply. The remote HomePlug AV restarts and saves the new password.

Quality of Service

Quality of Service gives you the capability to prioritize particular applications within your network. QoS is not enabled by default.

QoS Modes:

- Online Game/Internet mode prioritizes data streaming.
- Audio or Video prioritizes multimedia streaming.
- Voice over IP prioritizes voice applications.



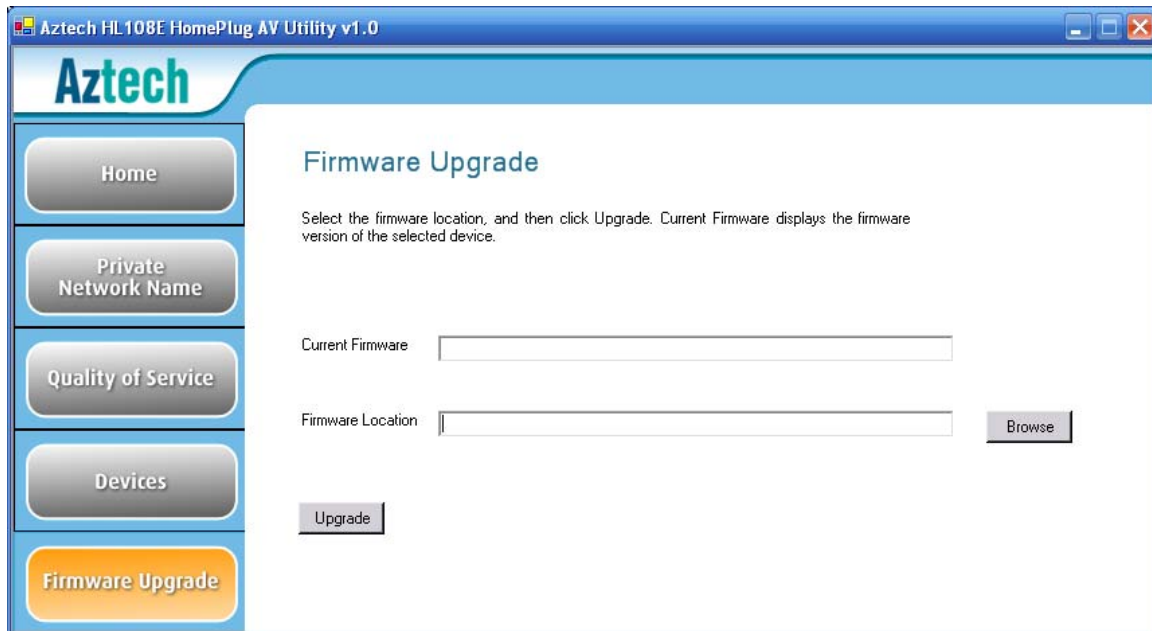
Quality of Service

To enable QoS:

1. Open HL108E HomePlug AV Utility.
2. Click Quality of Service.
3. Select Enable QoS.
4. Click a QoS mode.
5. Click Apply.

Firmware Upgrade

Use Firmware Upgrade to upgrade the firmware.



Firmware Upgrade

To upgrade the firmware of a HomePlug AV:

1. Open HL108E HomePlug AV Utility.
2. Click Firmware Upgrade.
3. Click Browse to select the location of the upgrade file. This file is downloaded from the product Web site with a file extension of NVM.
4. Click Upgrade.

Regulatory Compliance Notices

FCC Statement

This equipment has been tested and complies with the specifications for a Class B digital device, pursuant to Part 15 of the FCC Rules. These limits are designed to provide reasonable protection against harmful interference in a residential installation. This equipment generates, uses, and can radiate radio frequency energy and, if not installed and used according to the instructions, may cause harmful interference to radio communications. However, there is no guarantee that interference will not occur in a particular installation. If this equipment does cause harmful interference to radio or television reception, which is found by turning the equipment off and on, the user is encouraged to try to correct the interference by one or more of the following measures:

- Reorient or relocate the receiving antenna
- Increase the separation between the equipment or devices
- Connect the equipment to an outlet other than the receiver's
- Consult a dealer or an experienced radio/TV technician for assistance

European Regulations

The product has been designed, tested and manufactured according to the European R&TTE directive 1999/5/EC.

C E1313 Ⓢ

Safety Warnings

For your safety, be sure to read and follow all warning notices and instructions.

- Do not open the device. Opening or removing the device cover can expose you to dangerous high voltage points or other risks. Only qualified service personnel can service the device. Please contact your vendor for further information.
- Do not use your device during a thunderstorm. There may be a risk of electric shock brought about by lightning.
- Do not expose your device to dust or corrosive liquids.
- Do not use this product near water sources.
- Make sure to connect the cables to the correct ports.
- Do not obstruct the ventilation slots on the device.