

**REMINGTON®**

**HIGHPRECISION™**  
Premium Styling Tools

Washable Hair Clipper

***Use and  
Care Guide***



HC-600

## IMPORTANT SAFETY INSTRUCTIONS

When using an electrical appliance, basic precautions should always be observed, including the following. Read all instructions before using this appliance.

### DANGER

To reduce the risk of electric shock:

- Do not reach for an appliance that has fallen into water. Unplug it immediately.
- Do not use while bathing or in the shower.
- Do not place or drop into water or other liquid.
- Do not place or store this appliance where it can fall or be pulled into a tub or sink.
- Except when charging, always unplug this appliance from the electrical outlet immediately after using.
- Unplug this appliance before cleaning it.

### WARNING

To reduce the risk of burns, fire, electric shock or injury to persons:

- This appliance is for household use only.
- An appliance should never be left unattended when it's plugged in, except when charging a rechargeable appliance.
- Close supervision is necessary when this appliance is used by, on, or near children or invalids.
- Use this appliance only for its intended use as described in this manual.
- Do not use attachments not recommended by Spectrum Brands, Inc.
- Keep the cord away from heated surfaces.
- Never operate this appliance if it has a damaged cord or plug, if it is not working properly, if it has been dropped or damaged, or if it has been dropped into water. If any of these things happen, return the appliance to an authorized service center for examination and repair.

- Never drop or insert any object into any of the appliance's openings.
- Do not use outdoors or operate where aerosol (spray) products are being used, or where oxygen is being administered.
- Make sure the cord is disconnected from the clipper while storing this appliance and cord in a moisture-free area. Do not store it in temperatures exceeding 140°F (60°C).
- Do not use this appliance with a damaged or broken cutter unit, as injury may occur. Always make sure blades are aligned properly.
- Always attach plug to appliance, then adapter to outlet. To disconnect, turn all controls to OFF, then remove adapter from outlet, then detach power cord from the clipper for storage.
- Do not use an extension cord or a voltage converter with this appliance.
- Do not wrap the cord around the appliance.
- Dispose of used batteries properly. Do not incinerate. Batteries may explode if overheated. Do not wrap in metal or aluminum foil. Wrap in newspaper before discarding. It is suggested that you contact local battery redemption site(s) in your area.
- Do not attempt to recharge alkaline, heavy-duty, or regular batteries in a nickel-cadmium battery charger.

## SAVE THESE INSTRUCTIONS

### Contents

English .....	1
Spanish .....	11
French .....	21

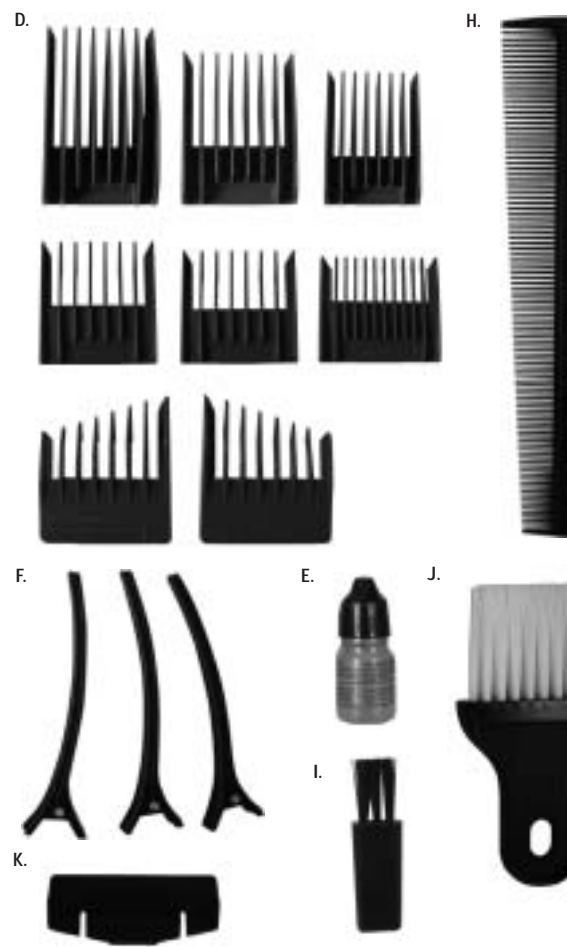
## Product Features

### High Precision™ Hair Clipper

High Precision™ Hair Clipper from Remington® brand provides a quick and easy way to obtain professional-looking haircuts at home. Developed to combine Precision Titanium coated blades with the freedom of rechargeability, this hair clipper enables you to achieve customized, modern looks and traditional hairstyles. To help you create those styles, and to extend the life of your Hair Clipper, please read all instructions before using.

#### Clipper Parts

- A. On/Off Switch
- B. Charge indicator light
- C. Charging adaptor
- D. 8 Attachment guide combs  
(3mm, 7, 9, 12, 18, 25, L/R ear taper)
- E. Oil
- F. 3 sectioning clips
- G. Storage/travel pouch
- H. Barbers Comb
- I. Cleaning brush
- J. Neck brush
- K. Blade guard
- L. Scissors



## How to Use

### CHARGING YOUR HAIR CLIPPER

Turn the clipper off

- Insert the adapter plug into the bottom of the clipper and plug the adapter unit into a power outlet. The red light will glow to indicate that it is charging.
- The clipper will be fully charged in 14-16 hours.
- The batteries cannot be overcharged, but we recommend that charging be discontinued if the clipper will not be used for a long period of time.
- It is advisable not to use this clipper directly from the power outlet when it has been fully charged, but if while using the clipper in cordless mode there is a noticeable drop in power, you can use directly from the power outlet. Never use under water when connected to the outlet.
- If the clipper has not been used for a month or longer, it is advisable to recharge it for 14-16 hours.
- To preserve the life of the batteries, discharge them by running the clipper until the blades move slowly. Switch off and fully recharge. Do this every six months.
- Charge the clipper at temperatures between 40°-90°F.
- Nickel-Cadmium batteries included. See battery removal section for proper disposal of batteries.

### INSTRUCTIONS FOR HAIR CUTTING

Before starting the cut

1. Inspect the clipper making sure that it is free from hair and dirt.
2. Seat the person so that their head is approximately at your eye level.
3. Before cutting, always comb the hair so it is tangle free and as it is naturally worn.
4. Hair must be dry.

#### Reminders:

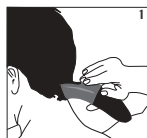
Cut the hair gradually using short strokes only to work gradually over the entire head. Always take off a little hair at a time. You can always trim off additional hair later. As you work, comb the hair frequently back into the style that you are cutting. Each comb attachment is marked accordingly on its outside middle surface.

#### BEST TECHNIQUE

These instructions are only to be used as a guide. You may prefer to begin trimming with a longer comb attachment to avoid cutting hair too short. As you become familiar with the settings, you can select your desired length setting.

#### STEP 1 – Nape of the neck – Diagram 1

1. Use 3mm or 7mm Guide Comb.
2. Hold the clipper with the cutting edge pointed up and begin the haircut. Start at the center of the head at the base of the neck.
3. Hold the clipper lightly against the head with the comb teeth pointing upward. Slowly lift the clipper, working upwards and outwards through the hair, trimming just a little at a time.



#### STEP 2 – Back of the head – Diagram 2

With the 12mm or 18mm Guide Comb attached, cut the hair at the back of the head.



#### STEP 3 – Side of the head – Diagram 3

With the 3mm or 7mm Guide Comb attached, trim sideburns. Then, change to the longer 9mm Guide Comb and continue to cut the top of the head.



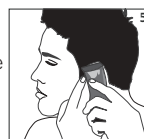
#### STEP 4 – Top of the head – Diagram 4

1. With the 18mm or 25mm Guide Comb attached, cut hair on top of the head against the direction in which the hair normally grows.
2. For longer hair on top, use without a Guide Comb. Lift the hair on top of the head with a hand comb. Cut over the hand comb with the hair lifted or hold the hair between the fingers and cut it to the desired length.
3. Always work from the back of the head.



#### STEP 5 – The finishing touches – Diagram 5

1. Use the clipper with out an attachment comb for close trimming around the base and sides of the neck. Use the ear comb guides to obtain a clean line around each ear. When using the ear comb guide, angle the clipper and lightly stroke around each ear towards the back of the neck.
2. To produce a clean straight line at the sideburns, reverse the hair clipper. Press the reversed clipper at right angles to the head, tips of the blades lightly touching the skin and then work downwards.



### SHORT TAPERED STYLES – “FLAT TOPS” & SHORT CUTS

1. Starting with the longest Guide Comb attached (25mm), cut from the back of the neck to the crown. Hold the Guide Comb flat against the head and slowly move the clipper through the hair, as shown.
2. Use the same procedure from the lower side to the upper side of the head, as illustrated. Then cut the hair against the direction in which it grows and level with the sides.
3. To give a “flat top” look, the hair on top of the head must be cut over the top of a flat comb.
4. Use a closer Guide Comb to taper the hair down to the neckline as desired.

### Cleaning & Maintaining Your Clipper

#### AFTER EACH USE

High Precision™ Hair Clipper is washable enabling use in the shower and ease of cleaning. Therefore, to maintain the performance of the cutters and trimmer, oil lightly before and after each use.

- Brush or rinse the accumulated hair from the cutters. Do not submerge the clipper in water.
- Place one or two drops of cutter oil on the blades. Turn the clipper on to distribute the oil evenly. Wipe off any excess oil.
- To clean the unit, wipe with a damp cloth and dry immediately.

! Be sure the clipper is turned off when applying the oil.

## How to Use

### EVERY SIX MONTHS

- At regular intervals the Blade Set should be removed and cleaned. To remove the Blade Set, remove the two screws holding the large blade to the clipper body. The Blade Set will separate from the body and can be cleaned as necessary. Replace the Blade Set and place a few drops of cutter or sewing machine oil onto the blades.

### CLEANING CAUTIONS

- Use only cutter or sewing machine oil as other oils will dry out and become sticky resulting in poor blade action. Do not use too much oil as it may spray.
- Do not use liquid cleaners on the cutters or harsh or corrosive chemicals on the cutter casing.
- Unplug the charge adaptor from the power outlet when not in use and when cleaning.

### STORAGE

- Always store this appliance and cord in a moisture-free area.
- Do not wrap the cord of the charging adaptor around the appliance.
- Do not store in temperatures above 140°F.

### Troubleshooting

The clipper does not work when turned on:

- Clipper must be charged for a full 14-16 hours.

Clipper cutters do not move:

- The cutting unit may be dirty and clogged. Clean the unit as directed in Cleaning & Maintaining section.

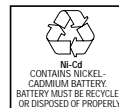
Clipper does not hold charge:

- Fully discharge battery by running clipper until it stops; then follow recharging instructions (see section on Charging Your Clipper).

## Battery

### Battery Removal

When your rechargeable clipper reaches the end of its useful life, the batteries must be removed and recycled or disposed of properly in accordance with your local and state requirements.



The following procedure should be followed for battery removal:

- Make sure your clipper is unplugged from any outlets so you don't risk an electric shock.
- For your safety remove the clipper assembly. Using a phillips head screw driver, remove the 2 screws on the back of the fixed blade.
- Grasp bottom portion of the clipper with one hand and top portion with the other hand. Pull the two halves apart. You may need to twist them slightly or use a flat screwdriver to pry them apart.



- Pull up or pry up on the battery pack and twist to remove it.



**CAUTION: THESE NICKEL-CADMIUM BATTERIES MUST BE RECYCLED OR DISPOSED OF IN ACCORDANCE WITH STATE AND LOCAL REGULATIONS.**

Do not burn or mutilate as they may burst or release toxic materials. Do not short-circuit as this may cause burns.

The EPA-certified RBRC® Battery Recycling Seal on the nickel-cadmium (Ni-Cd) battery indicates Spectrum Brands, Inc. is voluntarily participating in an industry program to collect and recycle these batteries at the end of their useful life when taken out of service in the United States or Canada. The RBRC® program provides a convenient alternative to placing used Ni-Cd batteries into the trash or the municipal waste stream, which may be illegal in your area. Please call 1-800-8-BATTERY<sup>SM</sup> for information on Ni-Cd battery recycling and disposal bans/restriction in your area. Spectrum Brands, Inc. involvement in this program is part of our commitment to preserving our environment and conserving our natural resources.

## Performance Guarantee

### Full Two-Year Warranty

Spectrum Brands, Inc. warrants this product against any defects that are due to faulty material or workmanship for a two-year period from the original date of consumer purchase. This warranty does not include damage to the product resulting from accident or misuse.

If the product should become defective within the warranty period, we will repair it or elect to replace it free of charge. Return your product with your name, address and day time phone number to: Spectrum Brands, Inc., Attention: Consumer Services, 601 Rayovac Drive, Madison, WI 53711. For more information call 800-736-4648 in the US or 800-268-0425 in Canada.

This warranty does not cover products damaged by the following:

- Accident, misuse, abuse or alteration of the product
- Servicing by unauthorized persons
- Use with unauthorized accessories
- Connecting it to incorrect current and voltage
- Wrapping cord around appliance causing premature wear & breakage
- Any other conditions beyond our control

No responsibility, obligation, or liability is assumed for the installation or maintenance of this product.

**SPECTRUM BRANDS, INC. SHALL NOT BE RESPONSIBLE FOR ANY INCIDENTAL, SPECIAL OR CONSEQUENTIAL DAMAGES RESULTING FROM THE USE OF THIS PRODUCT. ALL IMPLIED WARRANTIES, INCLUDING BUT NOT LIMITED TO IMPLIED WARRANTIES OF FITNESS AND MERCHANTABILITY, ARE LIMITED**

### IN DURATION TO TWO YEARS FROM DATE OF ORIGINAL PURCHASE.

This warranty gives you specific legal rights and you may also have other rights which vary from state to state or province to province. Some states do not allow the exclusion or limitation of incidental, special or consequential damages.

### Spectrum Brands, Inc. Money-back Offer

If within 30 days after you have purchased your Remington® branded product, you are not satisfied and would like a refund, return it with the sales slip indicating purchase price and date of purchase to the retailer from whom it was purchased. Spectrum Brands, Inc. will reimburse all retailers who accept the product within 30 days from the date of purchase. If you have any questions concerning the money-back guarantee, please call 800-736-4648 in the US or 800-268-0425 in Canada.

120 VAC 60 Hz

#### Questions or comments:

Call 800-736-4648 in the US or 800-268-0425 in Canada. or visit [www.remington-products.com](http://www.remington-products.com)

Dist. by: Spectrum Brands, Inc., Madison, WI 53711

Dist. by: Rayovac Canada Inc., Mississauga, ON L4W 2T7

REMINGTON and HIGH PRECISION are registered trademark of ROVCAL, INC.

©2005 ROVCAL, INC.  
07/05 Job# CS28166

T22-20044

MADE IN CHINA



RE

HIG

Máquina

Gu  
usc  
cui

