

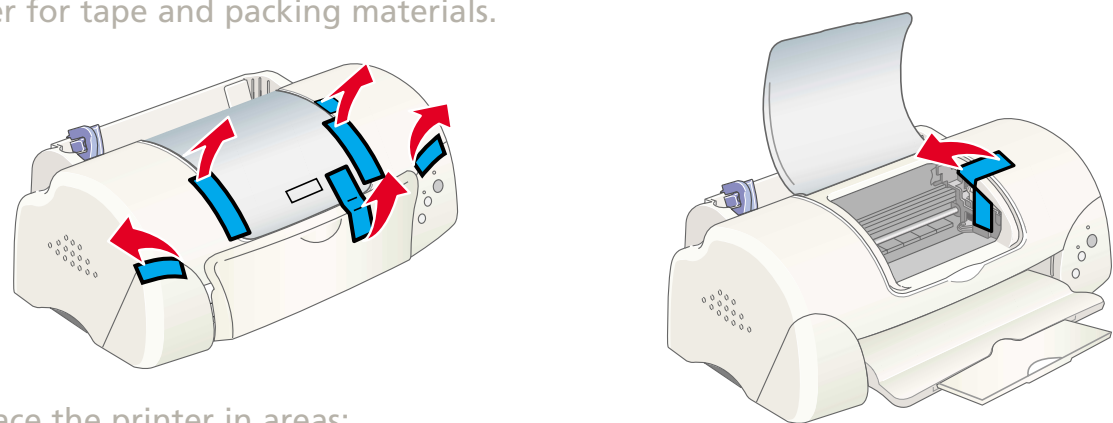
Set Up the Printer

Unpack Everything

Your printer comes with the items shown here. Make sure you've also got a USB or parallel cable (not included) to connect your printer. See the Windows® or Macintosh® "System Requirements" in the *Printer Basics* book.



Remove all the tape and packing material from the inside and outside of your printer. Be sure to check inside and all around the printer for tape and packing materials.



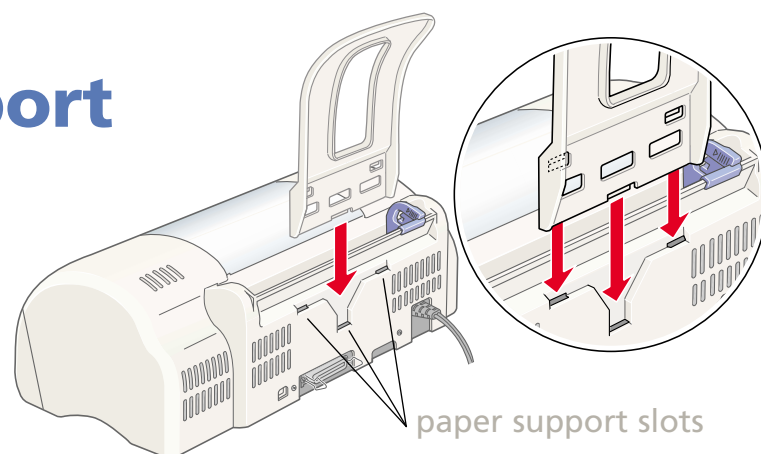
Don't place the printer in areas:

- with high temperature or humidity
- in direct sunlight or dusty conditions
- with poor ventilation
- near sources of heat or electromagnetic interference, such as a cordless telephone base unit

Follow all the "Important Safety Instructions" listed in the *Printer Basics* book.

Put On the Paper Support

Locate the paper support slots on the back of the printer above the ports. Position the paper support so it curves as shown here, then slide it into the slots. (Don't place it in the paper feeder.)

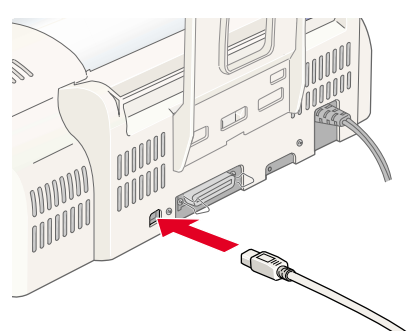


Connect the Printer

Connecting to a USB Port

(Recommended connection for Windows 98, Windows 2000, or Macintosh)

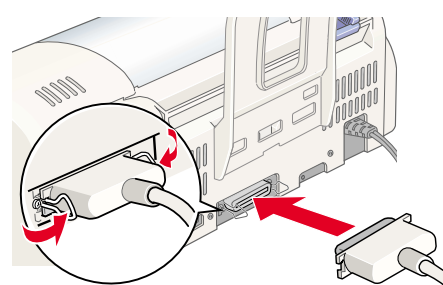
- 1 Make sure the printer and computer are turned off.
- 2 Connect the square end of the USB cable to your printer's USB connector and the flat end of the cable to your computer's USB connector or a first tier USB hub.



If you're using a USB hub, connect the printer's cable to the first tier of the hub or you may experience communication errors. If the printer doesn't work with the hub, connect it directly to a USB port.

Connecting to a PC Parallel Port

- 1 Make sure the printer and computer are turned off.
- 2 Connect the larger end of the parallel cable to your printer's parallel port. Then secure it with the wire clips.
- 3 Connect the other end of the cable to your computer's parallel port and secure it as necessary.



If your computer has multiple parallel ports, connect your printer to the built-in one (LPT1). To use a different port, see your Windows help. Configure your computer to match your printer's maximum speed by enabling ECP/DMA mode, if possible. See your computer documentation.

Turn On the Printer

- 1 Plug the printer's power cord into a grounded electrical outlet.

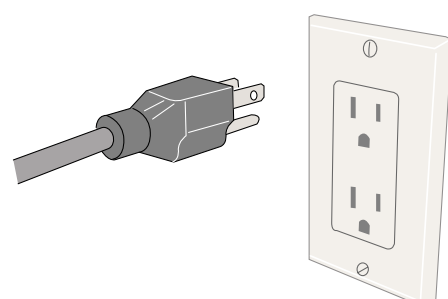


Don't use an outlet that can be turned off by a wall switch or timer, or one on the same circuit as a large appliance. This could damage the printer's power supply.

- 2 Press the power button to turn on the printer. The power light flashes and the error light comes on. The ink cartridge holders move into loading position.



Always use the power button to turn the printer on or off. Never use an external switch, such as a power strip switch.



Install the Ink Cartridges



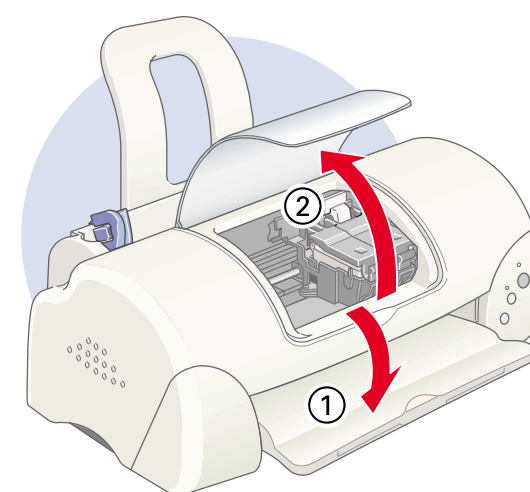
Follow these ink cartridge precautions and the others in your *Printer Basics* book:

- Use the cartridges packed with your printer the first time you install ink cartridges or your printer won't charge properly.
- Install both ink cartridges, and leave them installed for all types of printing, or the printer won't work.
- Remove the yellow tape seal from the ink cartridges or you'll permanently damage them. Don't remove the clear seals from the bottom or ink will leak out.
- Don't touch the green chips on the cartridges. This prevents normal operation and printing.
- Never turn off the printer when the power light is flashing, unless the printer hasn't moved or made any noise for more than 5 minutes.

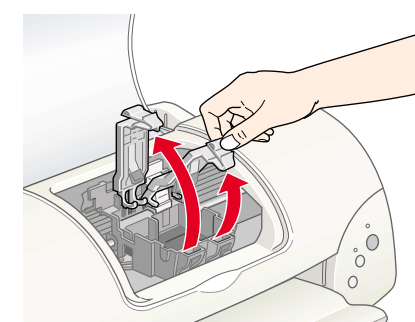


Keep ink cartridges out of the reach of children and do not drink the ink. If ink gets on your skin, wash the area thoroughly with soap and water. If ink gets in your eyes, flush them immediately with water.

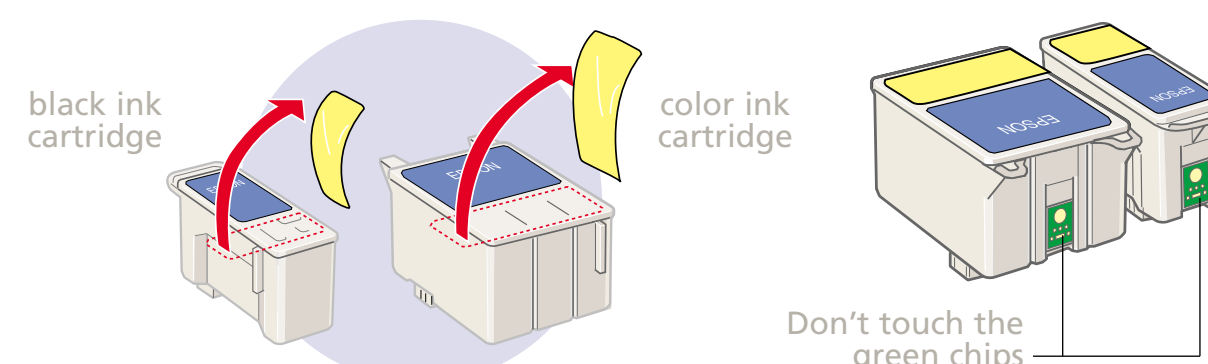
- 1 Lower the printer's output tray and open the cover.



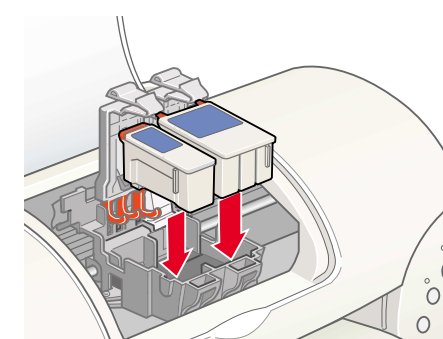
- 2 Lift up the two ink cartridge clamps.



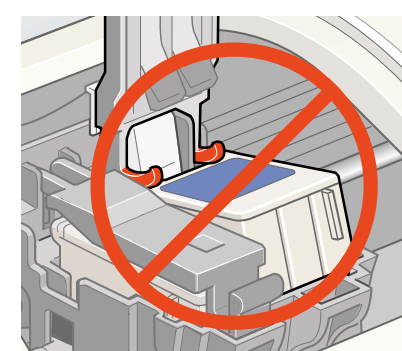
- 3 Unwrap the ink cartridges, then remove only the yellow part of the tape seal on top. Don't pull off the blue part.



- 4 Tilt each cartridge forward slightly as you lower it into its holder. Hang the tabs on the back of the ink cartridges on the hooks on the holder clamps.



Don't place the cartridges *under* the holder clamp hooks; you may damage the clamp when you close it.



- 5 Close the ink cartridge clamps.

- 6 Press the ink cartridge replacement button to begin charging the ink delivery system, then close the printer cover.

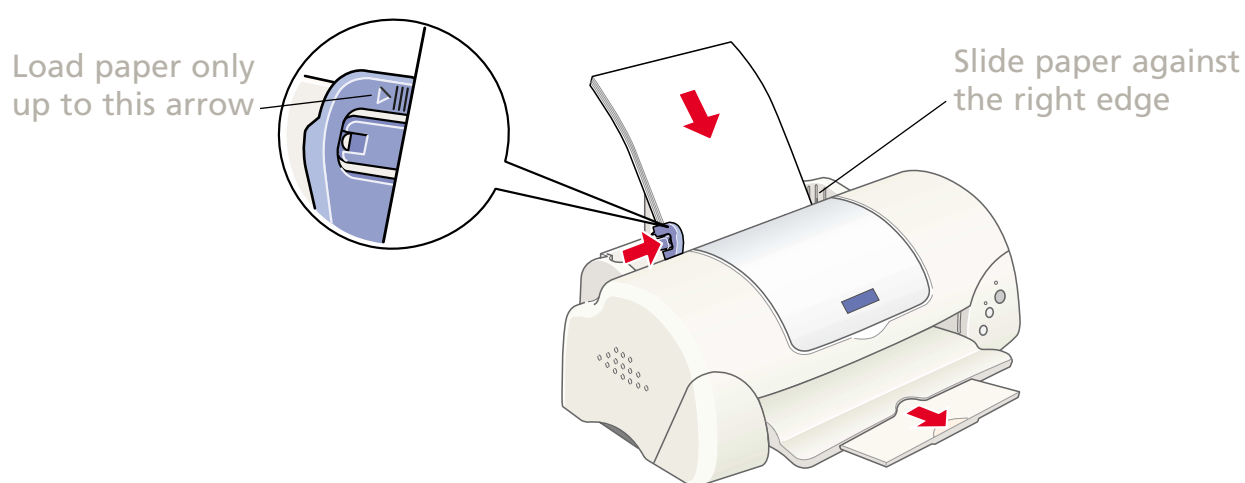


Charging takes about two minutes. The power light flashes and the printer makes various sounds until it's finished. Don't turn off the printer or interrupt charging or it will start over, using more ink than necessary. Charging is finished when the power light stops flashing and stays on.

Install the Ink Cartridges

Put In Paper

Open the output tray extension. Set a stack of plain paper lightly in the paper feeder; don't force it in. Place it against the right edge, slide the left edge guide against the paper.



Install the Software

Locate the CD-ROM that came with your printer and follow the instructions here for your system.

Windows

1 Press the power button to turn on your printer, if it's not already on.

2 Turn on your computer and wait until you see your Windows program icons. (On Windows 2000 or Windows NT®, log on as necessary.)



If you see a screen about Windows detecting your printer, click **Cancel**. You can't install your printer software that way.

3 Insert your printer software CD-ROM in a CD-ROM or DVD drive.

4 Double-click the **My Computer** icon on your desktop.

5 Double-click the **EPSON** CD-ROM icon.

6 Double-click the **EPSON** icon to start the installer.

7 Read the license agreement and click **Agree**. You see the Main Menu.

8 Click **Install Printer Driver**. You see the printer driver installation screen.

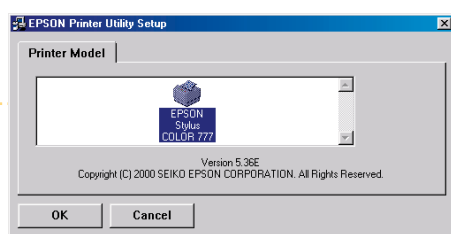
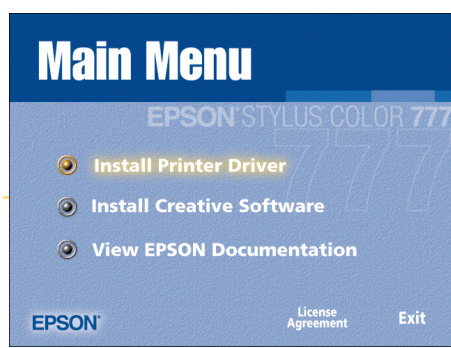
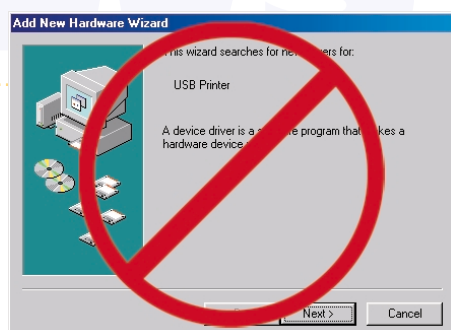
9 Make sure your printer model is highlighted, then click **OK**. The installer copies files to your computer and displays a series of windows on your screen.

10 When it's finished, click **OK**.

11 You see the EPSON Product Registration screen. Follow the on-screen instructions to register your printer. At the last screen, click **Done**.

12 At the Main Menu, click **Exit**. Then click **Yes** and restart your computer. Leave in the CD-ROM as your system restarts.

Now you're ready to install your creative software and EPSON documentation.



Macintosh

1 Press the power button to turn on your printer, if it's not already on.

2 Turn on your Macintosh and wait until you see your program icons.

3 Insert your printer software CD-ROM in a CD-ROM or DVD drive.

4 Double-click the **EPSON** icon in the CD-ROM folder. (If your CD-ROM folder doesn't open automatically, double-click the **EPSON** CD-ROM icon.)

5 Read the license agreement and click **Agree**. You see the Main Menu.

6 Click **Install Printer Driver**.

7 At the next screen, click **Install**. Follow the instructions on the screen to install your printer driver, select a default paper size, and restart your Macintosh.

8 After restarting, you see the EPSON Product Registration screen. Follow the instructions on the screen to register your printer. At the last screen, click **Quit**. Leave the CD-ROM in the drive.



If you choose to print a registration form, you'll need to select your printer in the Chooser (described in the next steps) before your form will print.

9 Open the Chooser from the Apple menu.

10 Click the **SC 777** icon, then click your USB port icon. Turn on background printing, if you want, then close the Chooser.

Now you're ready to install your creative software and EPSON documentation.



Install the Creative Software and View EPSON Documentation

1 Return to your printer software CD-ROM's Main Menu:

Windows: Double-click the **My Computer** icon, double-click your **EPSON** CD-ROM icon, then double-click the **EPSON** icon. You see the Main Menu.

Macintosh: Double-click the **EPSON** icon in the EPSON CD-ROM folder. You see the Main Menu.

2 Click **Install Creative Software**. You see a submenu.

3 Select the button for the software you want to install. Then click the **Install** button and follow the instructions on the screen.



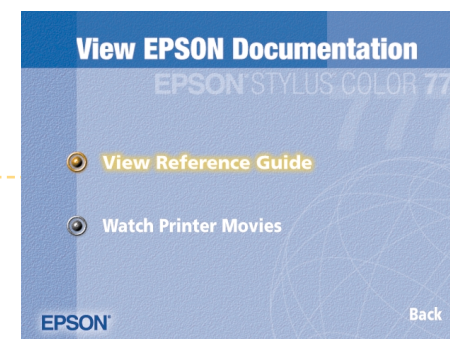
When you install Corel Print House™ 2000, you'll need to enter this product serial number: **PR2NO-73721P2658**. The installation may also restart your system. If it does, return to step 1 to access the Main Menu again.



4 When you're finished installing software, click **Back** to return to the Main Menu.

5 Click **View EPSON Documentation**. You see a submenu.

You can view the electronic *Reference Guide* or watch Fix-it Flix™ movies to learn how to replace ink cartridges, clean the print head, or load paper. For details, see your *Printer Basics* book.



You need an Internet browser, such as Netscape Navigator® or Microsoft® Internet Explorer (version 3.0 or later) to view the electronic manual. See your *Printer Basics* book for details.

6 When you're finished, click **Back** to return to the Main Menu.

7 Click **Exit** to exit the installer.

Now you're ready to print with your EPSON Stylus Color 777/777i printer! For simple step-by-step instructions, see the *Printer Basics* book.



To share your printer over a network, see the electronic *Reference Guide* for configuration instructions.



EPSON and EPSON Stylus are registered trademarks of SEIKO EPSON CORPORATION. Fix-it Flix is a service mark of Epson America, Inc. General Notice: Other product names are for identification purposes only and may be trademarks of their respective owners. EPSON disclaims any and all rights in those marks. Copyright © 2000 by Epson America, Inc. Printed on recycled paper. 8/00

CPD-10841