

Owner's Manual



SW Communications Adapter (SWCA)

About Xantrex

Xantrex Technology Inc., is a world-leading supplier of advanced power electronics and controls with products from 50 watt mobile units to 1 MW utility-scale systems for wind, solar, batteries, fuel cells, microturbines, and backup power applications in both grid-connected and stand-alone systems. Xantrex products include inverters, battery chargers, programmable power supplies, and variable speed drives that convert, supply, control, clean, and distribute electrical power.

Trademarks

Trace and Xantrex are registered trademarks of Xantrex International.

Notice of Copyright

SW Communications Adapter (SWCA) Owner's Manual © April 2002 Xantrex Technology Inc. All rights reserved.

Disclaimer

While every precaution has been taken to ensure the accuracy of the contents of this guide, Xantrex International assumes no responsibility for errors or omissions. Note as well that specifications and product functionality may change without notice.

Since the use of this manual and the conditions or methods of installation, operation, use and maintenance of the unit are beyond the control of Xantrex Technology Inc., the company does not assume responsibility and expressly disclaims liability for loss, damage, or expense arising out of or any way connected with such installation, operation, use, or maintenance.

Due to continual improvement through product updates, photographs and/or illustrations used in this manual may not *exactly* match your unit. Xantrex Technology Inc., reserves the right to update this product without notice or releasing an updated manual when *fit, form or function* are not affected.

Date and Revision

April 2002, Revision A

Part Number

973-0022-01-01

Contact Information

Web:	www.xantrex.com
Email:	dpm@xantrex.com
Phone:	360.435.8826
Fax:	360.435.2229

IMPORTANT SAFETY INSTRUCTIONS

This manual contains important safety instructions that should be followed during the installation and maintenance of this product.

To reduce the risk of electrical shock, and to ensure the safe installation and operation of this product, the following safety symbols have been placed throughout this manual to indicate dangerous conditions and important safety instructions.



WARNING - A DANGEROUS VOLTAGE OR CONDITION EXISTS IN THIS AREA. USE EXTREME CAUTION WHEN PERFORMING THESE TASKS.
AVERTISSEMENT - UNE TENSION OU CONDITION DANGEREUSE EXISTE DANS CETTE ZONE. FAIRE PREUVE D'EXTRÊME PRUDENCE LORS DE LA RÉALISATION DE CES TÂCHES.



CAUTION - This procedure is critical to the safe installation or operation of the unit. Follow these instructions closely.
ATTENTION - Cette procédure est essentielle à l'installation ou l'utilisation de l'unité en toute sécurité. Suivre ces instructions de près.



NOTE - This statement is important. Follow instructions closely.
NOTE - Cette déclaration est importante. Suivre les instructions de près.

- All electrical work must be done in accordance with local, national, and/or international electrical codes.
- Before installing or using this device, read all instructions and cautionary markings located in the manual, and on the inverter, the batteries, and the PV array.
- Do not expose this unit to rain, snow or liquids of any type. This product is designed only for indoor usage.
- This product contains no user-serviceable parts. Do not attempt to repair this unit.

Table of Contents

IMPORTANT SAFETY INSTRUCTIONS	iii
1.0 INTRODUCTION	1
2.0 INSTALLATION	3
To install the SWCA	3
Connecting the SWCA to a Computer using a Modem	4
Requirements	4
Additional Possible Requirements	4
Connecting Multiple SWCAs to a Single Computer	4
Advanced Monitoring Software	5
Installation Concerns	5
Multiple SWCAs	5
Positive Ground or PV Ground Fault Protection Installations	5
Installing the SWCPS DOS Program	8
3.0 OPERATION	9
Using the SWCPS DOS Program	9
SWCA DOS Display Emulation Software	9
Virtual Control Panel	9
Function Keys and Other Displays	10
The SWCA Programming Menu	10
The SWCA Programming Menu Function Keys	11
LED Control Indicators	12
Keyboard Commands	13
Starting the Program	14
ID Numbers	14
Changing the PC's COM Port Number	14
Accessing HELP Information from the SWCPS Program	15
Accessing the SETUP MENU from the SWCPS Program	15
Switching Between Multiple SWCA Adapters/inverters	15
Exiting the SWCPS Program	15
Use of the SWCA with Terminal Emulation Programs	16
Making a New Connection	16
Telephone Number	17
COM Port Values	18
Testing the SWCA	19
4.0 TROUBLESHOOTING	21

Table of Contents (continued)

APPENDIX A – PRODUCT AND SYSTEM INFORMATION	A-1
Warranty	A-1
Return Material Authorization Policy	A-2
Return Material Procedure	A-2
Service Information	A-3

List of Figures

Figure 1-1	SW Communications Adapter (SWCA)	1
Figure 2-1	SW Inverter/Charger Remote Port Location	3
Figure 2-2	SWCAs in Multiple-Inverter Installations	6
Figure 2-2a	Enlargement of Pin Assignments and Color Coding on Custom-made Serial Port Adapter	7
Figure 2-2b	Enlargement of Pin Assignments and Color Coding for 25-foot (4-conductor, telephone standard) Cable	7
Figure 2-2c	Enlargement of Pin Assignments and Color Coding on SWCA Adapter	7
Figure 3-1	Virtual Display using DOS Emulation Program	9
Figure 3-2	SWCA Programming Menu Display	10
Figure 3-3	Making a New Connection	16
Figure 3-4	Telephone Number Dialog Box	17
Figure 3-5	Com 1 Properties	18

List of Tables

Table 3-1	The SWCA Programming Menu	11
Table 3-2	LED Control Indicator Definitions	12
Table 3-3	Keyboard Commands for using Terminal Emulation Programs	14
Table 4-1	Troubleshooting the SWCA	21

1.0 INTRODUCTION

The Sine Wave Communications Adapter (SWCA) allows any SW series inverter/charger to be connected to a computer serial port or directly to a modem to be controlled and monitored over long distances.

The SWCA package includes the following items:

- SWCA adapter (gray plastic housing with green LED, phone jack and a 25-pin connector)
- Custom-made Serial Port Adapter (black plastic housing with phone jack and 9-pin connector)
- 25-foot, 4-conductor phone cable (with RJ11 jack tabs on the same side of the cable)
- 3.5" floppy disk with DOS program SWCPS.EXE (simulates the inverters control panel)
- SWCA Owner's Manual

Please be sure all of these parts are included before trying to use the SWCA.

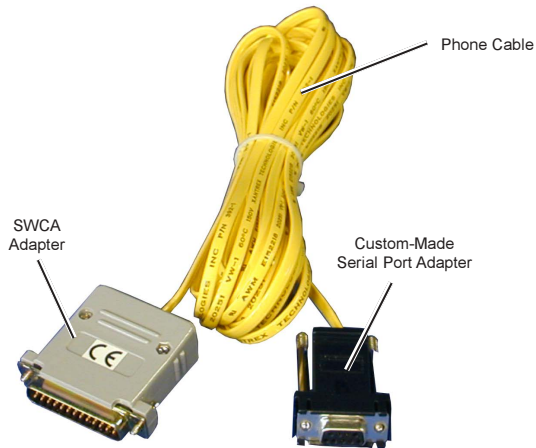



Figure 1-1
SW Communications Adapter (SWCA)


2.0 INSTALLATION

The SWCA converts the REMOTE port on the SW series inverter/charger into a standard RS232 type communications port interface.


 See Figure 2-1 for the location of the REMOTE PORT on the SW inverter/charger.

TO INSTALL THE SWCA

1. Connect the SWCA adapter to the SW series inverter/charger *remote* port located on the left end of the inverter, near the AC wiring compartment.

 **NOTE:** *There are two ports located on the inverter – one is used for the stacking cable and the other is for the remote control port. Make sure you connect the SWCA to the correct port. If a SW series remote control is being used, it will have to be disconnected while the SWCA is in use.*

2. Connect the phone cable to the phone jack on the gray SWCA housing and to the black serial port adapter.
3. Plug the serial port adapter into the computer serial port.

 **NOTE:** *On some computers, a DB9-to-DB25 adapter may be needed to allow connection.*

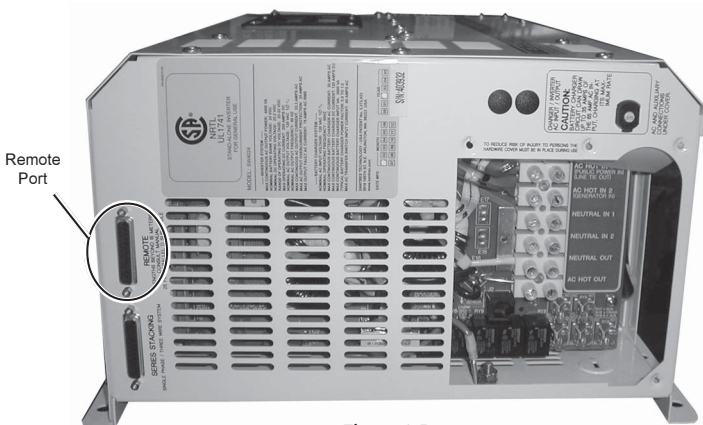



Figure 2-1
SW Inverter/Charger Remote Port Location

 **NOTE:** *The location of the REMOTE PORT may vary slightly depending upon the model of SW inverter/charger being used. All models should be labeled, however, to simplify the identification and location of the port.*

2.0 INSTALLATION

Connecting the SWCA to a Computer using a Modem

The SWCA can be connected directly to a modem for use in remote sites where a computer may not be available.

Requirements

To use a modem, the following is required:

- a terminal emulation program,



See *SECTION 3.0 OPERATION, Use of the SWCA with Terminal Emulation Programs.*

- a modem capable of auto answer and supporting a 9600 baud connection,
- an adapter for the DB9 connection from the phone cable to serial port adapter,
- a **NULL MODEM** adapter will be required for most applications. Contact the modem provider and modem documentation for more information.

Additional Possible Requirements

The modem at the inverter location might need to be DC powered if it is necessary to connect to the inverter during a fault condition where the inverter has shut off its AC output.

Connecting Multiple SWCAs to a Single Computer

Up to eight SWCAs can be used with a single computer serial port. The phone cable four conductors are simply run in parallel using standard phone cable line “splitters”. The splitters must connect the wires of the same color together – do not switch the colors around.

Before connecting multiple adapters to a serial port, connect each adapter individually to ensure it operates properly. The adapter ID number must be changed by using the DOS program provided on the disk before they are connected to the same computer serial port. The ID number can only be changed with a single adapter connected to the computer’s serial port.

Advanced Monitoring Software

The SWCA was developed to change the SW inverter raw data output to an RS232 protocol output. The SWCA code only manipulates the inverter's display or remote (SWRC) keypad strokes. The included DOS software emulates these keystrokes.

There are companies that have used these keystroke's bits of information (coming out of the SWCA) to develop advanced monitoring software. This software can provide monitoring and data logging capability. Additional information on these programs can be found at www.righthandeng.com or www.mauisolarsoftware.com.



NOTE: Xantrex Technology Inc. assumes no responsibility for the use or function of these advanced monitoring software programs.

INSTALLATION CONCERNS

Multiple SWCAs

If using multiple SWCAs and multiple inverters, the green wire must be isolated from each other as shown in Figure 2-2 on page 6.



NOTE: This could be a red wire - depending on the cable installation from the SWCA).

Positive Ground or PV Ground Fault Protection Installations

When using the SWCA in inverter installations that have DC ground fault protection (PVGFP) or where the inverter is connected in a "positive ground" configuration, it is recommended that an opto-isolator be connected somewhere between the SWCA and the computer com port. Opto-isolators can be obtained through www.blackbox.com (part SP400A-R3 and PS576 - 9Vdc power supply).

2.0 INSTALLATION

Installation Concerns (continued)

SWCAs IN MULTIPLE INVERTER INSTALLATIONS

Drawing shows female RJ11 (telephone) connectors from external view.

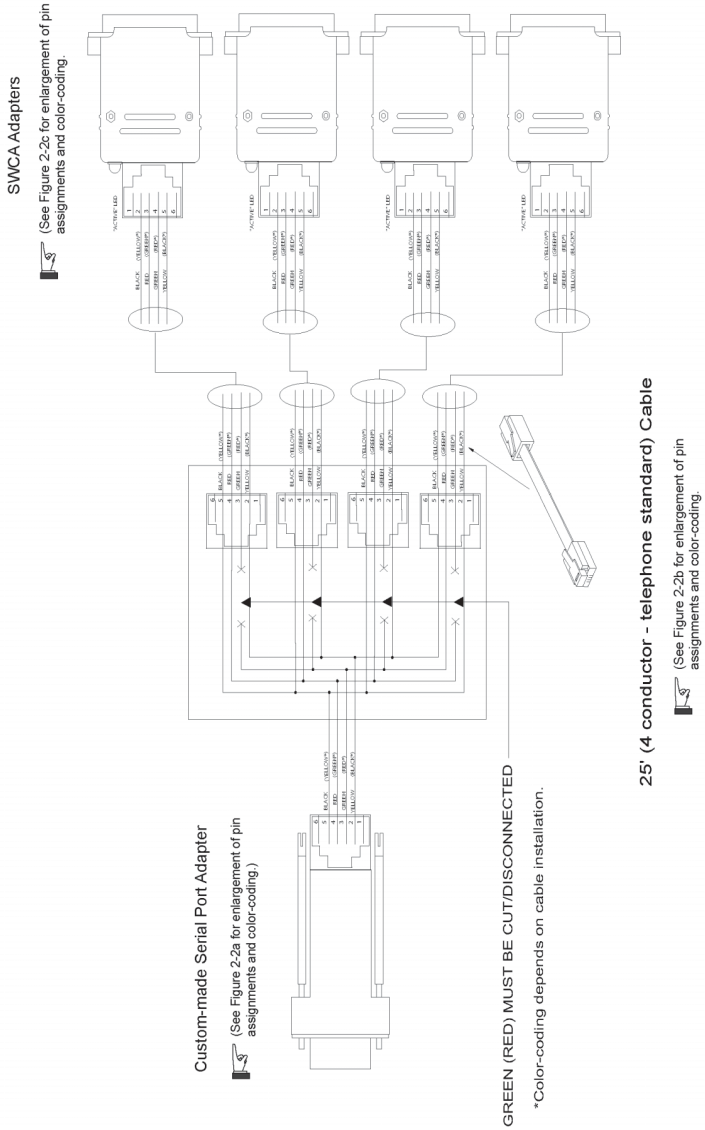
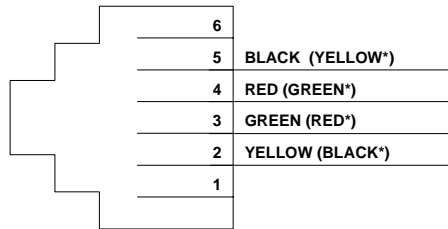
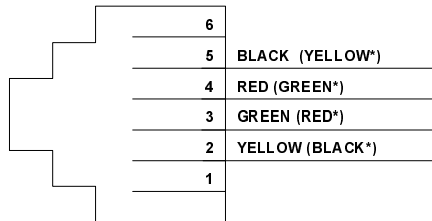


Figure 2-2
SWCAs in Multiple-Inverter Installations



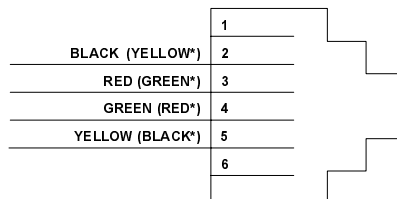
*Depending on the Cable Installation

Figure 2-2a
Enlargement of Pin Assignments and Color Coding
on Custom-made Serial Port Adapter



*Depending on the Cable Installation

Figure 2-2b
Enlargement of Pin Assignments and Color Coding
for 25-foot (4-conductor, telephone standard) Cable



*Depending on the Cable Installation

Figure 2-2c
Enlargement of Pin Assignments and Color Coding on SWCA Adapter

2.0 INSTALLATION

INSTALLING THE SWCPS DOS PROGRAM

A control panel simulation software program included on the floppy disk allows an IBM-compatible personal computer to operate as a virtual control panel for up to eight SW series inverter/chargers.



For other computer platforms, See *SECTION 3.0 OPERATION, Use of the SWCA with Terminal Emulation Programs*, on page 9.

To install the software, insert the floppy disk into your computer floppy drive and copy the file **swcps.exe** from the floppy disk provided to the hard disk on the computer. Remember the location of this file on the hard disk for later reference. Alternately, the program can be run directly from the floppy disk.

3.0 OPERATION

Function Keys and Other Displays

On the virtual control panel simulation, the buttons of the real control panel have been replaced with labels shown as F1 through F10. These refer to the function keys of the computer keyboard which are located either above or next to the main keyboard area. Each function key is associated with a specific inverter operation. Pressing the appropriate function key causes the display on both the inverter and the PC screen to change accordingly.

The virtual control panel also shows the LCD display window on the inverter's control panel. This will show the same information that is available at the inverter. When no adapter is available, the text "ADAPTER OFFLINE" appears. When an SWCA has been successfully connected, the LCD display window of the control panel simulator shows what is displayed on the inverter LCD display (e.g., adapter 3).

To the right of the LCD display area on the control panel simulator is an area where the status of the inverter's LED indicators are displayed. Any active LEDs are displayed by the label description of the LEDs function being shown. If the LED is flashing on the inverter, then the label description of the LED will also flash on the control panel simulator.

Since the same menu system is used with the control panel simulator as with the inverter itself, the operation of the SWCA will be familiar to anyone who has programmed a SW series inverter/charger system. The only difference is the use of the function keys instead of the buttons.

The SWCA Programming Menu

The SWCA Programming Menu provides the means to change the SWCA ID number or for changing the adapter's configuration code. It also provides the means for applying a textual identification labels.

Below the "LCD" display on the computer version, the word "ADAPTER" appears. This shows which inverter is being accessed. To access the different inverters, simply enter the ID number of the inverter (1-8) that you want to control by using the computer's numeric keys.

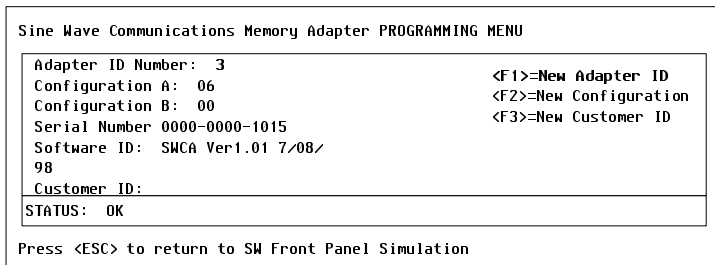


Figure 3-2
SWCA Programming Menu Display

The SWCA Programming Menu Function Keys

Programming features are accessed by pressing ALT+P and by using the function keys as described in Table 3-1.

Key	Purpose
F1	Changes SWCA ID number from the default of 1 to any number up to 8. After changing the ID number, write the adapters new ID number on the outside of the adapter's gray housing to make later identification of the adapter easier.
F2	Changes the adapter's configuration code. This alters the operation of the adapter. <i>Do not change this code from the default value of "06".</i>
F3	For typing in any text string to allow later identification of the adapter. Type in desired information and press <Enter>.
ECS	Leaves the programming menu.

Table 3-1
The SWCA Programming Menu



*NOTE: If the program does not find an adapter it indicates a **TIMEOUT ERROR**. Check the adapter and cable for proper connection and retry the program.*

3.0 OPERATION

LED Control Indicators

The codes indicate the status of the inverter's LEDs. The two letter codes are as follows:

Abbreviation	Definition
IN	Inverting
LT	Line Tie
A1	AC1 IN
A2	AC2 IN
BK	Bulk
FL	Float
ER	Error
OC	Over Current

Table 3-2
LED Control Indicator Definitions

If no codes display, it is because there are no LEDs on or the adapter is not responding.



NOTE: If an LED is flashing, it may not appear each time you pressed "1" because it was not illuminated when the SWCA sent the data to the computer. A flashing LED should be indicated by the LED two letter code being repeated on the display.

Keyboard Commands

The following keystrokes enable navigation through the menus and provide the means to change available settings.

Keystroke	Function
1-8	Select inverter: 1 through 8 is the inverter's ID number. 1 is the default.
L	Menu Headings –
R	Menu Headings +
U	Menu Itme – (towards top)
D	Menu Itme + (towards bottom)
- or _	Set Point – (lower value)
+ or =	Set Point + (higher value)
I	Inverter On/OFF Menu (same as the RED button on the inverter control panel)
G	Generator On/OFF Menu (same as the GREEN button on the inverter control panel)
<Ctrl> <S>	Setup Menu (same as pushing Generator and On/OFF Menu at the same time)
? or /	LED Status
V	Version number of SWCA
T	Set terminal mode If you see lots of strange characters display, trying pressing "T" for terminal mode.

Table 3-3
Keyboard Commands for using Terminal Emulation Programs

3.0 OPERATION

Starting the Program

From Windows:

1. Open **MY COMPUTER** or **WINDOWS EXPLORER**.
2. Locate the file “**swcps.exe**” and double-click it.

or

1. Click **START**.
2. Select **RUN**.
3. Type “**swcps**” and press <Enter>.

From DOS (or a DOS prompt within Windows):

1. Locate the file “**swcps.exe**”.
2. Type “**swcps**” and press <Enter>.

When the program starts, a line drawing of the SW series control panel will appear on the computer screen. You can resize the MSDOS window for better viewing of the control panel if the labeling is not clear.

ID Numbers

Once the program has started, it looks for an SWCA programmed with an ID number of “1”. This is the default ID number of all adapters. If two adapters are connected to a PC with the same ID number, you will not be able to communicate with either until the adapters have different ID numbers.



Refer to Table 3-1 on page 11 for information on accessing the SWCA Programming Menu to reprogram the adapters with a different ID number.

The program also assumes that the SWCA is connected to a serial port with a COM number of 1. If you are using a COM port other than one, refer to the paragraph in this section titled *Changing the PC's COM Port Number*.

Changing the PC's COM Port Number

To change the COM port number that the control panel simulator DOS program uses to find the adapter, add the COM port ID number (1-4) after the DOS command used to start the SWCPS program as follows:

```
C:> SWCPS 2
```

This command causes the program to look at the COM 2 port on the PC for the SWCA adapters.

Accessing HELP Information from the SWCPS Program

Help is available while using the SWCPS program by pressing F10 on the computer keyboard.

To leave the help screen, press the ESC key to return to control panel simulation program.

Accessing the SETUP MENU from the SWCPS Program

To access the inverter *SETUP MENU*, press ALT-F8 together. This feature is available for inverters with Rev 4.01 and higher software versions.

To leave the *SETUP MENU*, press F7 which returns you to the *SET INVERTER* main menu display.

Switching Between Multiple SWCA Adapters/inverters

To select another inverter, simply press the number key for the SWCA adapter that was programmed in and written on the outside of the adapter as previously discussed. Use numbers from 1 to 8.

Exiting the SWCPS Program

To exit the SWCPS program, press ALT-X. You can also use the ESC key to quit as well.

3.0 OPERATION

USE OF THE SWCA WITH TERMINAL EMULATION PROGRAMS

Modem connection requires the use of a terminal emulation program as described in the following sections. A modem is required at both the inverters and at the computer, with a phone line available to make the connection.

The SW Communications Adapter (SWCA) supports use with “terminal emulation” programs. Any computer that has available serial communications port and terminal emulation software can communicate with the SW series inverter using a cable and modem connection.

Making a New Connection

1. Start the terminal emulation software of your choice.
2. Enter “SWCA” in the Name location.
3. Select the desired icon.
4. Click “OK”.

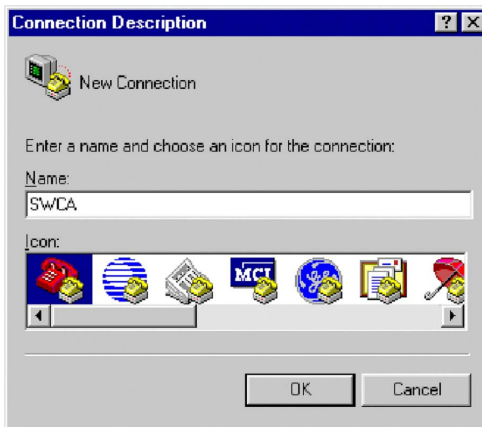


Figure 3-3
Making a New Connection

Use of the SWCA with Terminal Emulation Programs (continued)

Establishing the Connection

1. Enter Country code: (e.g., United States of America (1))
2. Enter Area code: (e.g., 360)
3. Enter Phone Number: (e.g., 435-8826)
4. For connections to the SWCA with a cable, select "Direct to COM1".
(If you are using a port other than COM1, choose the com port you are using.)
5. For connections to the SWCA with a modem, select "xxx Bps Data Fax Modem" (where "xxx" is the transmission speed of the modem being used).
6. Click OK.

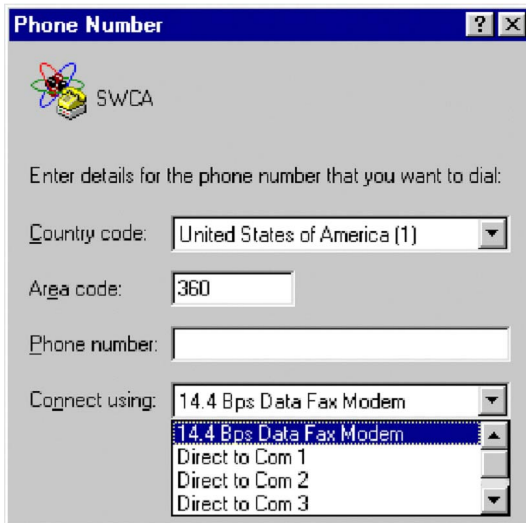



Figure 3-4
Telephone Number Dialog Box

3.0 OPERATION

COM Port Values

You need to enter the following values for the COM port as shown in Figure 3-5.

Bits per second: 9600 BAUD
Data bits: 8
Parity: No or None
Stop Bits: 1
Flow control: Either setting

 **NOTE:** These are the only acceptable values

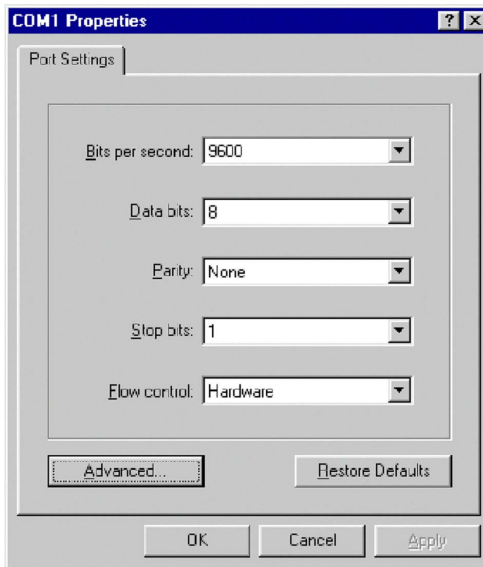


Figure 3-5
COM1 Properties

Click OK and a blank window opens.

TESTING THE SWCA

In order to test the SWCA, it must be plugged it into an inverter that is powered up on batteries or a suitable power supply. Press the number "1". If everything is correct, the inverter should reply with a "UNIT1" and possibly some two character codes.

3.0 OPERATION

4.0 TROUBLESHOOTING

Symptom	Recommendation
<p>Display reads: ADAPTER OFFLINE</p> <p>This is displayed when running the DOS display emulation program when there is no adapter response.</p>	<ol style="list-style-type: none">1. Check the ID number of the adapter you are trying to access. Ensure it is correct. This will display when there is no adapter with the ID number you are entering.2. Check the connection from the adapter to the remote port.3. Check the connection from the COM Port to the remote port.4. Check the LED on the SWCA Adapter.<ol style="list-style-type: none">a. If it illuminates when connected to the inverter's remote port, then the adapter is recognized.b. If it does not illuminate when connected to the inverter's remote port, then the adapter is malfunctioning and needs to be replaced.
Data (via modem) is not recognizable.	Ensure the BAUD rate for the modem and the dial-up program is fixed at 9600.
Modem is not connecting	Run the DOS emulation program to determine if the adapter is functioning and all connections to the adapter are correct.

Table 4-1
Troubleshooting the SWCA

4.0 TROUBLESHOOTING

APPENDIX A – PRODUCT AND SYSTEM INFORMATION

WARRANTY

Xantrex Technology Inc., warrants its power products against defects in materials and workmanship for a period of two (2) years from the date of purchase, established by proof of purchase or formal warranty registration, and extends this warranty to all purchasers or owners of the product during the warranty period. Xantrex does not warrant its products from any and all defects:

- arising out of material or workmanship not provided by Xantrex or its Authorized Service Centers;
- when the product is installed or exposed to an unsuitable environment as evidenced by generalized corrosion or biological infestation;
- resulting from abnormal use of the product, alteration, or use in violation of the instructions;
- in components, parts, or products expressly warranted by another manufacturer.

Xantrex Technology Inc., agrees to supply all parts and labor to repair or replace defects covered by this warranty with parts or products of original or improved design, at the company's option. Xantrex Technology Inc., also reserves the right to improve the design of its products without obligation to modify or upgrade those previously manufactured. Defective products must be returned to Xantrex Technology Inc., or its Authorized Service Center in the original packaging or equivalent. The cost of transportation and insurance on items returned for service is the responsibility of the customer. Return transportation (UPS Ground or equivalent) as well as insurance on all repaired items is paid by Xantrex Technology Inc.

All remedies and the measure of damages are limited to the above. Xantrex Technology Inc., shall in no event be liable for consequential, incidental, contingent, or special damages, even if Xantrex Technology Inc., has been advised of the possibility of such damages. Any and all other warranties, expressed or implied, arising by law, course of dealing, course of performance, usage of trade or otherwise, including, but not limited to, implied warranties of merchantability and fitness for a particular purpose, are limited in duration for a period of two (2) years from the original date of purchase.

Some states or countries do not allow limitations on the term of an implied warranty, or the exclusion or limitation of incidental or consequential damage, which means the limitations and exclusions of this warranty may not apply to you. Even though this warranty gives you specific legal rights, you may also have other rights which vary from state to state.

APPENDIX A – PRODUCT & SYSTEM INFORMATION

RETURN MATERIAL AUTHORIZATION POLICY

You must obtain a Return Material Authorization (RMA) number from Xantrex before returning a product directly to Xantrex. Products returned without an RMA number or shipped collect will be refused. When you contact Xantrex to obtain service, be prepared to supply the serial number of your product and its date of purchase as well as information about the installation and use of the unit. Record this information in "Information About Your System" on page A-3 of this guide.

RETURN MATERIAL PROCEDURE

If you are returning a product, follow this procedure:

1. Obtain an RMA number and a shipping address from Xantrex.
2. Package the unit safely, preferably using the original box and packing materials. Include the following:
 - The RMA number
 - A copy of your dated proof of purchase
 - A return address where the repaired unit can be shipped
 - A contact telephone number
 - A brief description of the problem
3. Ship the unit freight prepaid to the address provided in step 1.

APPENDIX A – PRODUCT & SYSTEM INFORMATION

SERVICE INFORMATION

Xantrex Technology Inc. takes great pride in its products and makes every effort to ensure your unit fully meets your independent powering needs.

If your product needs repair, contact our Customer Service department at: (360) 435-8826 to obtain an RMA# and shipping information; or, fax this page with the following information to: (360) 474-0616.

Please provide:

Part Number: _____

Purchase Date: _____

Problem: _____

Include a telephone number where you can be reached during business hours and a complete return shipping address (P.O. Box numbers are not acceptable).

Name: _____

Address: _____

City: _____

State / Province: _____

Zip / Postal Code: _____

Country: _____

Phone: (____) _____

FAX: (____) _____

E-mail Address: _____

APPENDIX A – PRODUCT & SYSTEM INFORMATION

Notes:



xantrex

Smart Choice for Power

t 1 360 435 8826

f 1 360 435 2229

dpm@xantrex.com

www.xantrex.com