

# CompactFlash/SDIO Connection Kit with *Bluetooth*<sup>®</sup> Wireless Technology

*Featuring a Socket CompactFlash/SDIO card and  
Windows CE software for adding Bluetooth capability  
to Pocket PC 2000/2002/2003 mobile computers*

## User's Guide



# Table of Contents

<b>CHAPTER 1 INTRODUCTION</b>	<b>4</b>
Overview	4
Contents of the Connection Kit	5
Installation and Usage Steps Summary	6
<b>CHAPTER 2 BASIC SETUP</b>	<b>7</b>
STEP 1: Register the Card	7
STEP 2: Prepare Network Information	7
STEP 3: Install the Software	8
STEP 4: Complete the <i>Bluetooth</i> Setup Wizard	11
STEP 5: Insert the Card	13
STEP 6: Get Connected!	14
STEP 7: Dial-up to Your Network	18
<b>CHAPTER 3 FEATURES</b>	<b>29</b>
Turn Radio Transmitter ON/OFF	29
<i>Bluetooth</i> ActiveSync	30
<i>Bluetooth</i> LAN Access	33
<i>Bluetooth</i> Faxing	36
<b>CHAPTER 4 ADVANCED FEATURES</b>	<b>39</b>
Set up Your <i>Bluetooth</i> Card	40
Assign COM Ports	41
Discover <i>Bluetooth</i> Device(s)	42
Bond with Discovered Device(s)	43
View Device Properties	45
Set up Your Favorite Device	46
Change Views	47
Delete a Device from the Folder	48
<b>CHAPTER 5 SOCKET OBEX</b>	<b>49</b>
Exchange Business Cards	50
Send a Contact	52
Send a File	54
Browse Remote Device	56
Receive Contact or File	62
Enable File Sharing	62
<b>CHAPTER 6 THE SOCKET DIALER</b>	<b>63</b>
<b>CHAPTER 7 BLUETOOTH PRINTING</b>	<b>66</b>

<b>APPENDIX A SPECIFICATIONS</b>	<b>69</b>
CompactFlash Card	69
SDIO Card	70
<b>APPENDIX B SAFETY AND USAGE TIPS</b>	<b>71</b>
<b>APPENDIX C AUTOMATIC PHONE CONNECTIONS</b>	<b>75</b>
<b>APPENDIX D TROUBLESHOOTING</b>	<b>76</b>
<b>APPENDIX E SUPPORT RESOURCES</b>	<b>79</b>
Socket On-Demand Support (SOS)	79
Live Technical Support	79
<b>LIMITED WARRANTY</b>	<b>81</b>
<b>COPYRIGHT NOTICE</b>	<b>83</b>
<b>REGULATORY COMPLIANCE</b>	<b>84</b>
CompactFlash Card	84
SDIO Card	87

# Chapter 1 Introduction

## Overview

The Socket CF/SDIO Connection Kit with *Bluetooth* Wireless Technology for Windows CE makes it easy to add *Bluetooth* capability to a Pocket PC 2000/2002/2003. It's perfect for connecting any of these mobile computers wirelessly to your favorite *Bluetooth* enabled phone, LAN access point, computer or printer.



Socket's card is the only plug-in card to incorporate all *Bluetooth* components, including antenna, within the CompactFlash Type I or SDIO form factor.

## Packages Available

The Connection Kits for Windows CE include a CF/SDIO card and software, including drivers, the *Bluetooth* Setup Wizard, the Get Connected! Wizard, the *Bluetooth* Devices folder, Socket OBEX and the Socket Dialer. There are also features for *Bluetooth* ActiveSync and *Bluetooth* LAN Access.

For people using notebook computers running Windows 98\*, Me, 2000 or XP, Socket offers two options. The CF Connection Kit and Adapter package includes a CF Card, CF-to-PC Card adapter plus software support for both notebook computers and Windows CE-based devices. The package is available online at: [www.socketcom.com/shop](http://www.socketcom.com/shop)



For users who already own the Connection Kit for Windows CE, the Windows Upgrade Kit comes with a CF-to-PC Card adapter and software for Windows notebooks. You can purchase the upgrade kit separately online at:

[www.socketstore.com/product.asp?sku=2014297](http://www.socketstore.com/product.asp?sku=2014297)

---

\* Windows 98 and Windows 98 SE

### **Software Features**

For quickly connecting your mobile computer to a *Bluetooth* enabled phone, use the Get Connected! Wizard. Afterwards, you can use the Socket Dialer to directly dial a number from your Contacts list.

Turn Transmitter OFF
Get Connected!
Advanced Features ▶
Bluetooth ActiveSync
Bluetooth LAN Access
About...

In addition to phones, Socket's software also makes it easy to connect to devices like computers, access points, and printers. The ActiveSync option guides you through connecting and synchronizing with a computer. Similarly, the LAN Access option helps you connect to a *Bluetooth* enabled LAN access point. To connect to a printer or other type of device, use the advanced features found in the *Bluetooth* Devices folder.

The Transfer via *Bluetooth* option enables you to exchange business cards and files with another *Bluetooth* enabled device that supports OBEX. You can even use one mobile computer to browse the contents of another.

Software updates: [www.socketcom.com/support/support\\_bluetooth.asp](http://www.socketcom.com/support/support_bluetooth.asp)

### **About This User's Guide**

This *User's Guide* explains how to install and use the *Bluetooth* Card. The term "Pocket PCs" refers to Pocket PC 2000s, Pocket PC 2002s and Pocket PC 2003s.

## **Contents of the Connection Kit**

The Socket *Bluetooth* Connection Kit includes these items:

- A Socket card (CompactFlash card Type I or SDIO)
- Software Installation CD
- Software installation guide with copyright, warranty, and regulatory compliance information

## Installation and Usage Steps Summary

Basic installation and operation of the *Bluetooth* Card for use with a *Bluetooth* phone can be completed in seven steps.

### **BASIC SETUP AND USE WITH A *BLUETOOTH* PHONE**

- STEP 1: Register the card
- STEP 2: Prepare network information
- STEP 3: Install the software
- STEP 4: Complete the Socket *Bluetooth* Setup Wizard
- STEP 5: Insert the *Bluetooth* Card into your mobile computer
- STEP 6: Get Connected!
- STEP 7: Dial-up to your network

### **FEATURES**

- Turn transmitter ON/OFF
- *Bluetooth* ActiveSync
- *Bluetooth* LAN Access

### **ADVANCED FEATURES**

- Set up your *Bluetooth* Card
- Use the *Bluetooth* Devices folder
  - View device properties
  - Set up your favorite devices
  - View/modify *Bluetooth* COM ports
  - Discover other *Bluetooth* device(s)
  - Bond with another *Bluetooth* device
  - Change views
  - Delete a device from your folder

### **OBEX**

- Exchange business cards
- Send a contact
- Send a file
- Browse remote device
- Receive contact or file
- Enable file sharing



### **SOCKET DIALER**

### **BLUETOOTH PRINTING**

*Note: There are some important safety and usage guidelines you should read before operating the Bluetooth Card. Please refer to Appendix B, "Safety and Usage Tips."*

## Chapter 2 Basic Setup

This chapter covers the minimum steps you must complete to install and use the *Bluetooth* Card.

### STEP 1: Register the Card

Socket highly recommends that all users register their product. Registered users receive priority for technical support. You can register the card online at: [www.socketcom.com/prodreg/](http://www.socketcom.com/prodreg/).

The screenshot shows the Socket Communications, Inc. website's Product Registration and On-Line Technical Support page. The page has a blue header with the Socket logo and navigation links: HOME, SEARCH, CONTACT US, ABOUT US, PRODUCTS, EMBEDDED, SUPPORT, and WHERE TO BUY. The main content area is titled "Product Registration" and includes a welcome message and two bullet points. The first bullet point describes the Socket On-Line Support (SOS) virtual technical support assistant. The second bullet point describes the registration process for new users. To the right of the text is a box for the SOS assistant. Below the text is a form titled "Product Registration / Technical Support" with two sections: "I am a new user" and "I am a returning user". The "I am a new user" section has a "Country/Region" dropdown menu and a "Register >" button. The "I am a returning user" section has "Email Address" and "Password" input fields and a "Sign-in >" button.

socket  
The Mobile Connection

Socket Communications, Inc. HOME | SEARCH | CONTACT US

ABOUT US | PRODUCTS | EMBEDDED | SUPPORT | WHERE TO BUY

» Product Registration

Welcome to Socket's Product Registration and On-Line Technical Support web page. We have several levels of Customer Support in order to better serve our customers.

- At any time you can access **Socket On-Line Support (SOS)**. This virtual technical support assistant can help you with your product support questions or FAQs for Bar Code Scanners, Bluetooth, Cordless, Digital Phone Card, GPS, Wireless LAN, Modems, and Serial products. SOS responds immediately to your inquiry, and no product registration is needed to use the system.
- Alternatively, if you would like personal assistance from one of Socket's technical support representatives, please register your product using the form below and follow the online process to submit an email inquiry. **Please allow 48 hours for a response.**

**Socket On-Line Support**

Virtual technical support assistant for Bar Code Scanners, Bluetooth, Cordless, Digital Phone Card, GPS, Wireless LAN, Modems, and Serial.

Click here SOS

Product Registration / Technical Support

**I am a new user**

Please select your Country or Region.

Country/Region  
Select a Country

Register >

**I am a returning user**

Welcome back. Please sign in.

Email Address

Password

Sign-in >

### STEP 2: Prepare Network Information

Consult with your network administrator/MIS technician to obtain any necessary settings for your network (e.g. IP addresses, dial-up number, user name, password, etc.).

## STEP 3: Install the Software

Follow these steps to install the software BEFORE inserting the Socket card.

1. Use ActiveSync and a serial/Ethernet/USB cable or cradle to make an active connection between the mobile computer and a host PC.



2. Insert the *Bluetooth Connection Kit Installation CD* into the host PC.

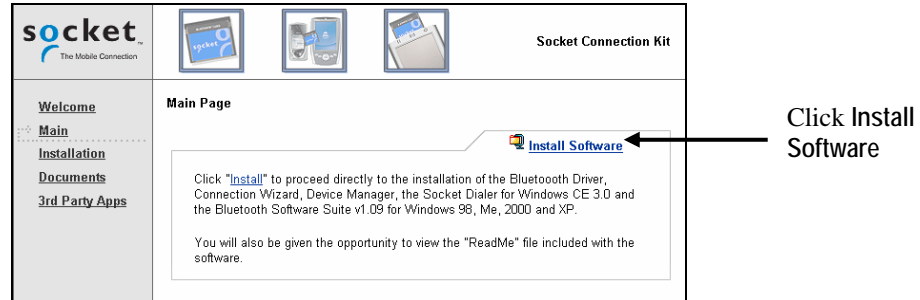


3. Use **My Computer** or **Windows Explorer** to access your CD-ROM drive. In the CD, click on **SETUP.EXE**
4. The Socket Connection Kit Setup Center will launch in Internet Explorer. The Setup Center is an HTML-based guide to help you through the installation process. Read the information in the first screen, then click **Next**.

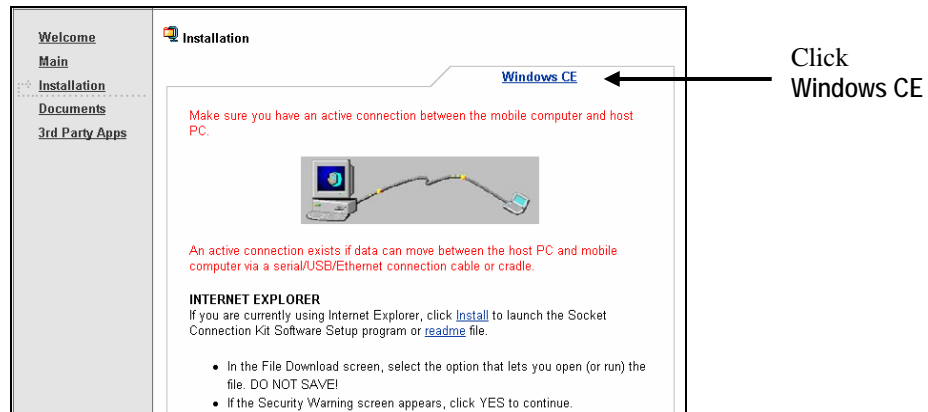




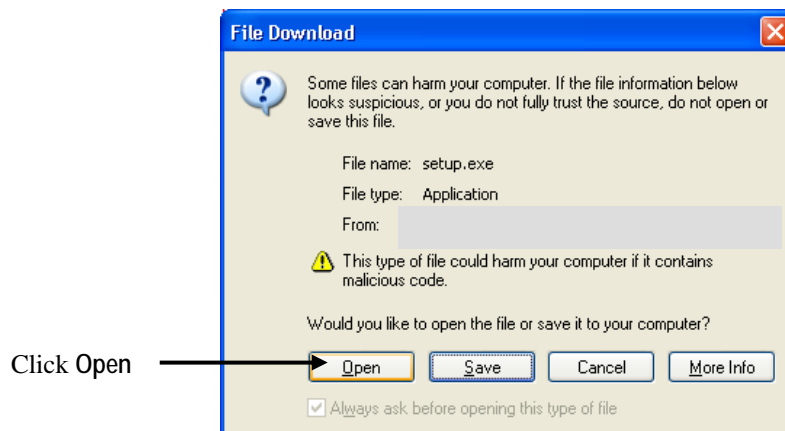
5. On the Main Page, click on the **Install Software** link.



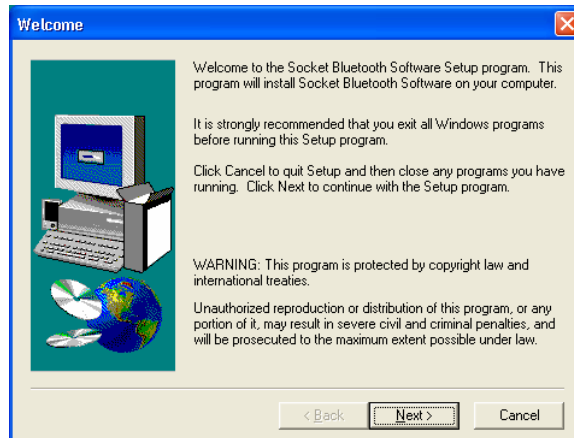
6. The Installation Page will appear. Read the instructions for Windows CE, then click on the **Windows CE** link.



7. In the File Download screen, click **Open**.



8. The Socket *Bluetooth* Software Setup program will begin. Follow the wizard to install the software on your mobile computer.



9. After installing the primary software for the Connection Kit, you can choose to also install the software for Socket OBEX and/or the Socket Dialer. Follow the same procedure to install these optional software programs.

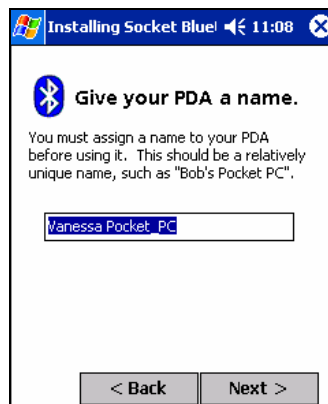
*Note: The Socket Dialer is not compatible with all Bluetooth enabled phones. Socket has verified compatibility with Nokia and Ericsson phones and incompatibility with the Motorola 270c, NTT DoCoMo Paldio 633S, and Sony au C413S phones. Results may vary with other phones that are not officially supported by the Socket Connection Kit.*

## STEP 4: Complete the *Bluetooth* Setup Wizard

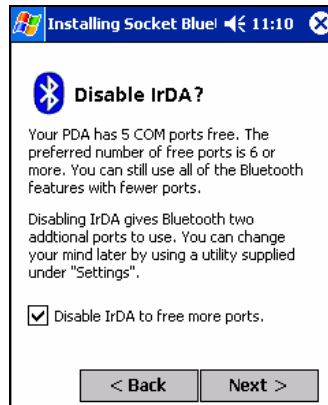
1. After you install the software, the Socket *Bluetooth* Setup Wizard will automatically launch on your mobile computer. Tap Next>.



2. Give your mobile computer a friendly name. Tap Next>.



3. If your mobile computer has fewer than 6 COM ports free, the Disable IrDA? Screen will appear. If desired, disable IrDA to free more ports. Tap Next>.



*Note: This will disable the IR port on a Pocket PC. To readjust the IrDA settings, go to Start | Settings | System| IrDA. Some devices do not allow you to disable IrDA.*



4. In the next screen, choose which two ports and services you plan to use most. After making your selections, tap Next>.



*Note: You cannot disable the Bluetooth Phone port.*

5. In the last screen, read the instructions and tap Finish.
6. Soft reset your mobile computer by pressing the reset button. This is necessary for changes to take effect.

## STEP 5: Insert the Card

***Important!***


***Do NOT insert the card upside down or shove the card in too hard. Damage may occur!***

***Pocket PC 2003 only: Wait for the device reset to finish before you insert the card!***

Insert the card into your mobile computer's slot. Make sure the card is right-side up, with the blue label on top.

Insert a CompactFlash or SDIO card directly into a slot of its size. When properly inserted, the CF card will be fully contained within the slot, whereas the SDIO card will protrude a little from the slot.




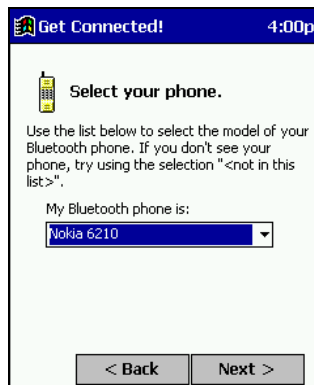
After the mobile computer recognizes the card, the *Bluetooth* icon  will appear in the task tray (visible in the **Today** screen).

## STEP 6: Get Connected!

The Get Connected! Wizard guides you through a one-time setup process that prepares the mobile computer and phone for *Bluetooth* connections. The wizard varies depending on what phone you want to connect to.

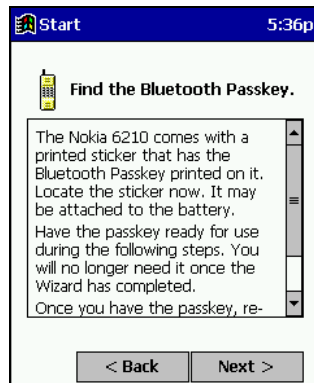
### Ericsson, Nokia 6210, NTT DoCoMo, Sony Phones

1. Tap on the *Bluetooth* task tray icon  (visible from the Today screen). In the pop-up menu, select Get Connected!
2. Follow the *Bluetooth* "Get Connected!" Wizard. In the second screen, use the drop-down list to select your *Bluetooth* phone. The wizard will provide tailored instructions based on your selection.

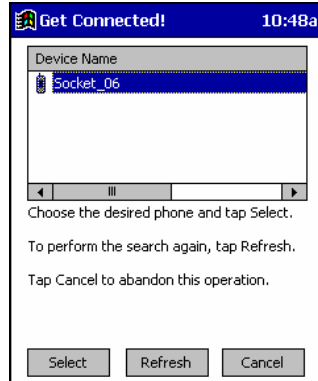


*This example is for a Nokia 6210 phone. Your phone may differ.*

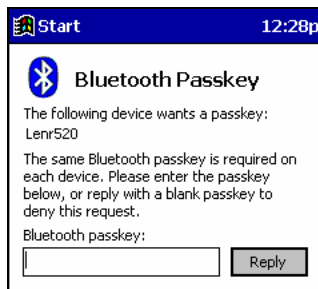
3. Follow the next screen(s) to prepare your specific phone for *Bluetooth* connections. You may need to do 1, 2 or all of the following steps:
  - a. Naming your *Bluetooth* phone
  - b. Setting your *Bluetooth* phone in Discoverable mode
  - c. Preparing your *Bluetooth* passkey



4. When the search is complete, a list of the discovered *Bluetooth* phones will appear. Choose the phone you wish to connect to, and tap **Select**. A service discovery phase will begin, about 5-10 seconds.



5. As prompted in the next screen, prepare your phone for bonding. For instructions on setting your phone to “Bondable” or “Pairable” mode, refer to your phone manual. Have your passkey ready, then tap **Next**.
6. In the next screen, enter the passkey. Tap **Reply**.




*Note: Exchanging passkeys allows the phone and mobile computer to set up an encrypted data link for secure communications.*

7. The mobile phone may then either automatically accept the passkey or ask you to enter one. If prompted for a passkey, use the same one you entered on the mobile computer.
8. Tap **Finish**. After successfully connecting, the phone will appear in the *Bluetooth Devices* folder. In the *Today* screen, the *Bluetooth* icon will also blink. You will not need to run the *Get Connected!* Wizard again unless you plan to switch between different phones.

*Note: You may also switch between different phones by assigning a new “favorite phone” in the Bluetooth Devices folder.*

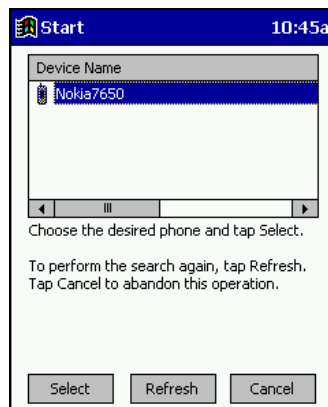
## **Motorola Timeport 270C, Nokia 3650/6310/7650/8910/8910i**

1. Tap on the *Bluetooth* task tray icon  (visible from the Today screen). In the pop-up menu, select **Get Connected!**
2. Follow the *Bluetooth* "Get Connected!" Wizard. In the second screen, use the drop-down list to select your *Bluetooth* phone. The wizard will provide tailored instructions for your phone.

*Note: The screens below are for the Nokia 7650.*



3. As directed in the next two screens, assign the phone a unique name and set the phone in Discoverable mode. Then tap **Next>**.
4. The mobile computer will begin to search for the phone. When the search is over, a list of the discovered *Bluetooth* phones will appear.

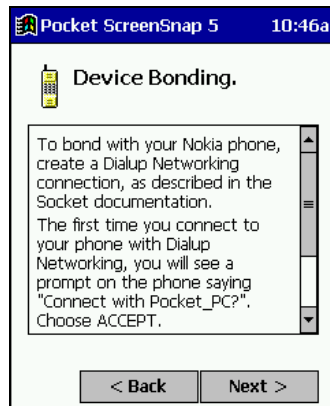


Choose the phone you wish to connect to, and tap **Select**. A service discovery phase will begin, about 5-10 seconds.

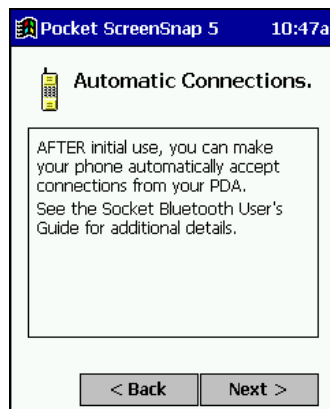


5. The next two screens describe procedures you can only complete outside of the wizard. Read through each screen but do not complete the described procedures until you exit the wizard. Directions for these procedures are provided in *STEP 7: Dial-up to Your Network*, starting on the next page. The two procedures are:

**Bonding with your phone** — This must be completed in order to complete the *Bluetooth* connection and involves dial-up networking.



**Automatic Connections** — This procedure is optional but will make future *Bluetooth* connections more convenient.



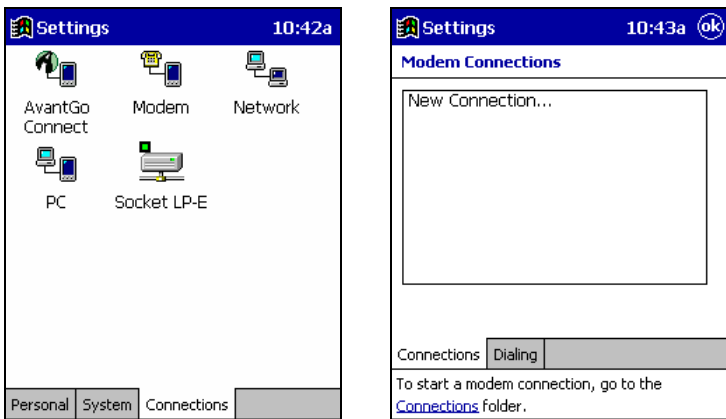
6. Continue to the last screen of the wizard and tap **Finish**. Now proceed to STEP 6 to complete the bonding process and, if desired, set up automatic connections.

# STEP 7: Dial-up to Your Network

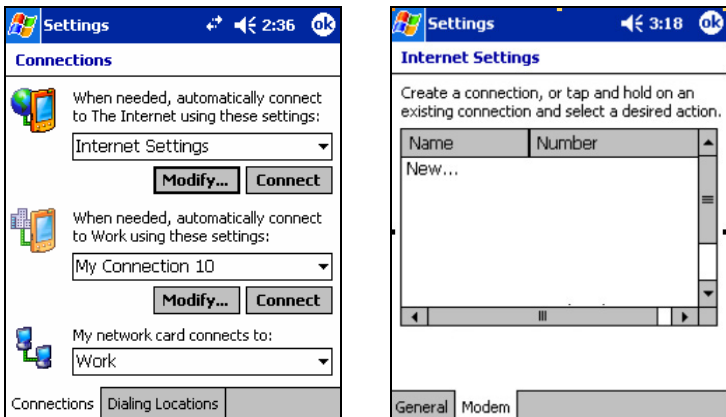
Complete the following steps to create a new *Bluetooth* connection. Before setting up dial-up networking, prepare yourself with dial-up information and other necessary settings for your office network or ISP.

## Pocket PC 2000/2002

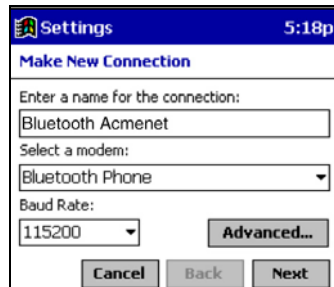
- 1. Pocket PC 2000 — Go to Start | Settings | Connections | Modem. In the next screen, tap New Connection...



Pocket PC 2002 — Go to Start | Settings | Connections. Tap on the Connections icon. In the top field, select Internet Settings. Tap Modify... In the next screen, tap New...

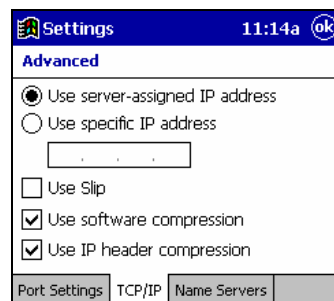


2. In the next screen, enter a name for the dial-up connection. For the modem, select *Bluetooth Phone*. For the Baud Rate, select 115200. Tap **Advanced...**



*Note: Remember what you name the connection. You will need it when you start the connection.*

3. The **Port Settings** screen will appear.  
If needed, tap on the **TCP/IP** and/or **Name Servers** screens to enter any necessary settings for your office network or ISP. Tap **ok**.

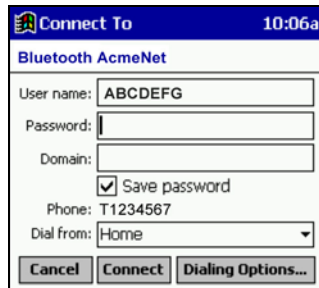


4. Tap **Next**.
5. In the **Phone number** field, enter the dial-up number. Tap **Next**.
6. Uncheck **Wait for dial tone before dialing**. Tap **Finish**.



7. Now you are ready to start the connection.

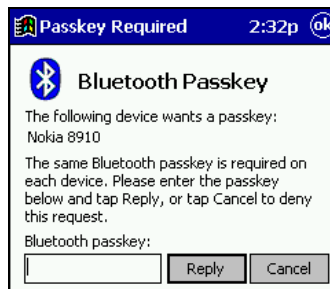
Pocket PC 2000 — Go to **Start | Programs | Connections**. Tap on the *Bluetooth* connection you just set up. Make sure the dialing settings are correct. Tap **Connect**.



Pocket PC 2002 — In the **Connections** screen, under **Internet Settings**, tap **Connect**. In **Network Log On**, verify the dialing settings. Tap **OK**.

8. **ONLY FOR MOTOROLA TIMEPORT 270C OR NOKIA 3650/6310/7650/8910/8910i:**

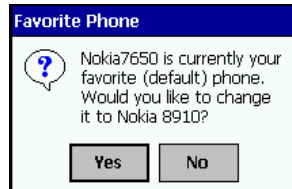
- After you tap **Connect** for the first time, the phone will display a message asking if you want to bond. On Motorola, enter **GRANT**; on Nokia, enter **ACCEPT**.
- Make up a 4-16 digit passkey, enter it on the phone, then enter it on the Pocket PC.



*Note: The Bluetooth icon on the Today screen will blink to indicate a connection.*

- After successfully bonding with your phone, you may want to set up your phone to automatically bond with your Pocket PC without requiring a passkey every time. This option is available with some Motorola and Nokia phones. See Appendix C, “Automatic Phone Connections,” for instructions.

9. To use a different *Bluetooth* phone for dial-up networking, you can use the same connection setup, but you must make the new phone your favorite. Just run the **Get Connected! Wizard** again, select the new phone, and make it your new **Favorite** when prompted.



Alternatively, you can use the *Bluetooth* Devices folder to change your favorite phone (see Chapter 4 for instructions).

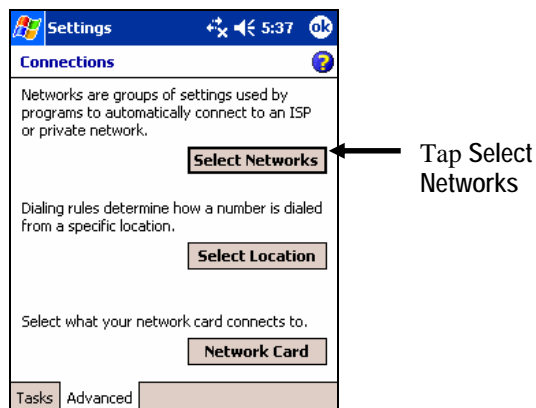
## **Pocket PC 2003**

*Note: These instructions are for a standard dial-up connection to an Internet Service Provider (ISP). If you want to connect to a work network and/or VPN/proxy server, please refer to your Pocket PC 2003 documentation for instructions.*

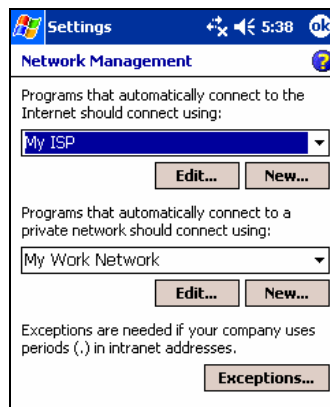
1. Go to Start | Settings | Connections | Connections.



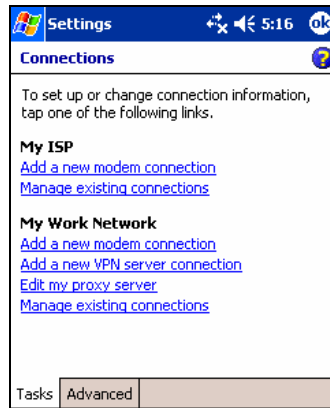
2. In the next screen, tap on the Select Networks button.



3. In the Network Management screen, make sure My ISP is selected in the top field, and My Work Network is selected in the bottom field. Tap ok.

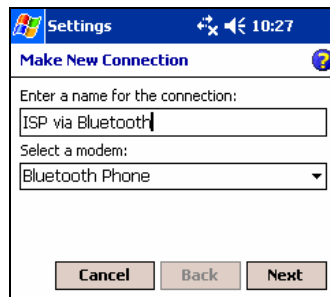


4. Tap on the Tasks tab. In most cases, you should tap **Add a new modem connection** under **My ISP**.

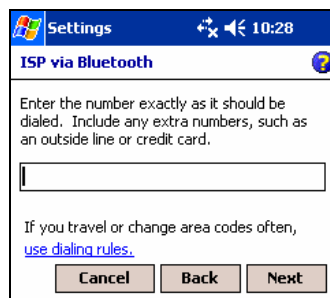


5. In the next screen, enter the following:
  - Enter a name... Enter a name, such as “ISP via *Bluetooth*”
  - Select a modem: *Bluetooth* Phone.

Tap **Next**.

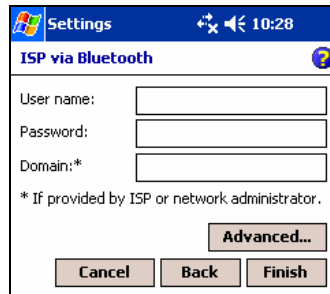


6. In the next screen, enter the dial-up number exactly how it should be dialed from your *Bluetooth* phone. Include the country and area code if needed.



*Note: If you plan to travel or change area codes often, tap on use dialing rules to configure different dialing locations.*

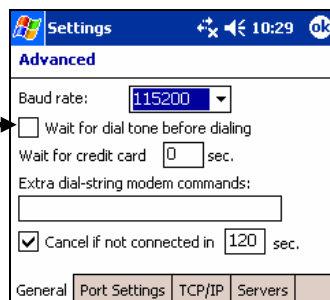
7. In the next screen, enter the User name and Password. Tap on the Advanced button.



8. In the General screen, enter the following settings:

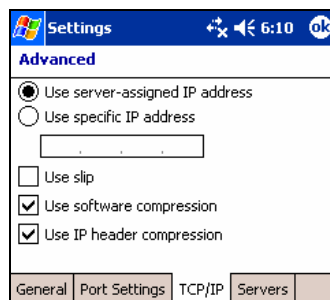
- Baud rate: 115200
- Wait for dial tone before dialing: Unchecked

Uncheck →



9. If your network uses DHCP, tap ok. In the last screen, tap Finish.

If you need to enter IP addresses, tap on the TCP/IP and Servers tabs to enter the necessary settings. Tap ok. In the last screen, tap Finish.

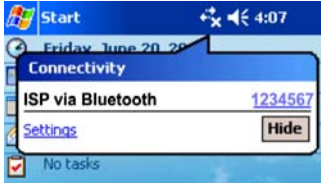


Now you have finished creating a connection and are ready to dial up to your network. Socket recommends using either of two methods for dialing in and connecting to your network.



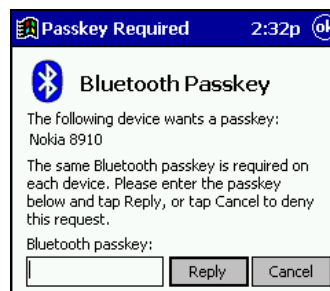
➤ METHOD 1: TAP ON THE CONNECTION ICON

- a) Tap on the Connection icon in the navigation bar at the top of the screen. It should have an “X” to show that you are not connected.
- b) A bubble should appear with the dial-up connection you just created. Verify the phone number, then tap on the phone number. The phone will try to connect.



*Note:*

- Multiple connections may be listed. Tap on the phone number of the connection you want to dial.
  - If the connection you want is not listed, tap on **Settings**. Tap **Manage Existing Connections** and select the connection you want to use. Tap **ok**.
- c) Depending on your phone and connection settings, you may need to enter a passkey and/or a password before the phone will start to dial:
    - If you have a **Nokia 3650/6310/7650/8910/8910i** or **Motorola Timeport 270C**, you must complete the bonding process:
      - a. The first time you try to connect, the phone will ask if you want to bond. On Motorola, enter **GRANT**; on Nokia, enter **ACCEPT**.
      - b. Make up a 4-16 digit passkey, enter it on the phone, then enter it on the Pocket PC.



- c.After successfully bonding with your phone, you may want to set up your phone for automatic connections. See Appendix C, “Automatic Phone Connections,” for instructions.

- If you did not save the dial-up password, the Network Log On screen may appear. Enter the Password and tap OK.



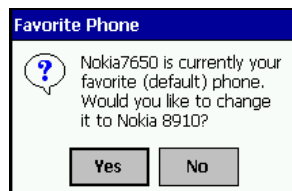
- d) The device will begin dialing.



Connection icon: (Navigation bar at top of screen) indicates an active dial-up or network connection



- e) To use a different *Bluetooth* enabled phone for dial-up networking, you can use the same connection setup, but you must make the new phone your favorite. Just run the *Get Connected! Wizard* again, select the new phone, and make it your new *Favorite* when prompted.



Alternatively, you can use the *Bluetooth* Devices folder to change your favorite phone (see Chapter 4 for instructions).

➤ METHOD 2: DIAL AUTOMATICALLY FROM THE APPLICATION

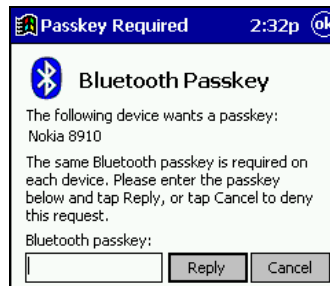
*Note: After you have set up a dial-up connection, the Connection Manager will automatically try to connect whenever you insert the card and try to use Pocket Internet Explorer, Pocket Inbox, or any other program that uses a dial-up connection.*

- a) Start the program that uses a dial-up connection. Enter a request for receiving and/or transmitting information (e.g., in Pocket Internet Explorer, enter a new URL and tap “Go”). The Pocket PC will automatically try to connect.



*Note: If the phone number of dialing location is wrong, tap Settings. Tap Manage Connections and Edit the properties of your connection.*

- b) Depending on your phone and connection settings, you may need to enter a passkey and/or a password before the phone will start to dial:
- If you have a **Nokia 3650/6310/7650/8910/8910i** or **Motorola Timeport 270C**, you must complete the bonding process:
    - a. The first time you try to connect, the phone will ask if you want to bond. On Motorola, enter GRANT; on Nokia, enter ACCEPT.
    - b. Make up a 4-16 digit passkey, enter it on the phone, then enter it on the Pocket PC.



- c. After successfully bonding with your phone, you may want to set up your phone for automatic connections. See Appendix C, “Automatic Phone Connections,” for instructions.
- If you did not save the dial-up password, the Network Log On screen may appear. Enter the Password and tap OK.

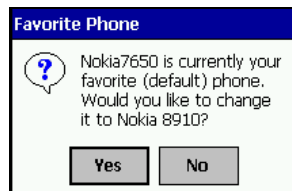


- c) When the Pocket PC starts calling, you should see the call status on both the Pocket PC screen and phone display. After the Pocket PC connects, it will receive/transmit the information as requested (e.g., Pocket Internet Explorer will display the requested website).

Connection icon: (Navigation bar at top of screen) indicates an active dial-up or network connection



- d) To use a different *Bluetooth* enabled phone for dial-up networking, you can use the same connection setup, but you must make the new phone your favorite. Just run the **Get Connected! Wizard** again, select the new phone, and make it your new *Favorite* when prompted.




Alternatively, you can use the *Bluetooth* Devices folder to change your favorite phone (see Chapter 4 for instructions).

## Chapter 3 Features

This chapter explains how to turn the *Bluetooth* ON/OFF and how to use the *Bluetooth* ActiveSync and *Bluetooth* LAN Access options.

### Turn Radio Transmitter ON/OFF

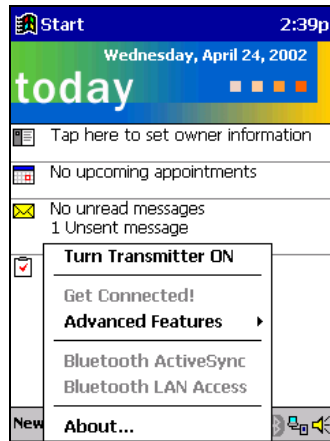
You may want to turn off the radio transmitter to save power or if you are entering an area with radio restrictions (e.g., an airplane).

1. After you insert the *Bluetooth* Card, the *Bluetooth* icon  should appear in the task tray (visible from the *Today* screen). Tap on the icon.
2. In the pop-up menu, select **Turn Transmitter OFF**.



*Note: If you installed Socket OBEX, the menu will also list Transfer via Bluetooth.*


3. The *Bluetooth* Card radio transmitter will shut off. The *Bluetooth* icon in the task tray will become gray, as will relevant menu options (e.g., *Get Connected!*).

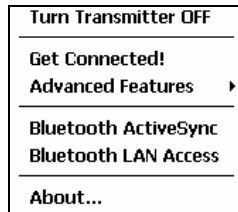


4. To turn the radio transmitter back on, tap on the gray *Bluetooth* icon. In the pop-up-menu, select **Turn Transmitter ON**.

## Bluetooth ActiveSync

This section explains how to use the *Bluetooth* ActiveSync feature. It helps you quickly and easily ActiveSync to a notebook or desktop computer with ActiveSync v3.x installed.

1. Tap on the *Bluetooth* icon . In the pop-up menu, select *Bluetooth ActiveSync*.



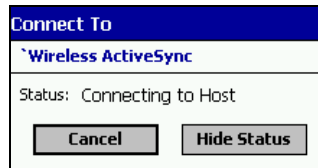
*Note: If you installed Socket OBEX, the menu will also list Transfer via Bluetooth.*

2. The next screens will vary depending on if your *Bluetooth* Devices folder contains any computers, and if one is chosen as your favorite. Please refer to the appropriate scenario:

SCENARIO #1: Your *Bluetooth* Devices folder contains a favorite desktop computer.



- (a) When you tap *Bluetooth ActiveSync*, your mobile computer will automatically try to connect to your favorite computer.
- (b) The *Connect To* screen will appear, reporting that it is trying to connect to *Wireless ActiveSync*.



- (c) After a successful connection is made, the status screen will report **Connected**. Now you are ready to synchronize files, if desired.

SCENARIO #2: Your *Bluetooth* Devices folder contains no favorite desktop computer.



- (a) When you tap on *Bluetooth ActiveSync*, a screen will appear that allows you to choose which computer to connect to in your *Bluetooth* Devices folder. Choose a computer from the list and tap **Select**, or tap **Find** to search for another computer.



*Note: If the computer you want to connect to is not listed, tap **Find** to begin a search. Proceed as described in Scenario #3 on the next page.*

- (b) Your mobile computer will attempt to connect to your selected computer.



- (c) After a successful connection is made, the status screen will report **Connected**. Now you are ready to synchronize files, if desired.



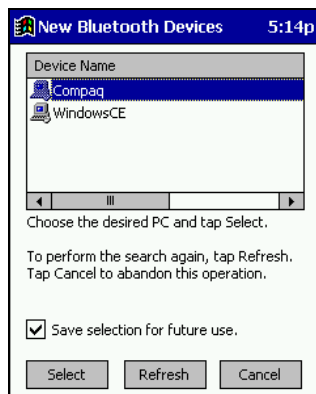
SCENARIO #3: Your *Bluetooth* Devices folder contains no computers.

- (a) When you tap on *Bluetooth ActiveSync*, a *Bluetooth Device Search* will automatically begin.



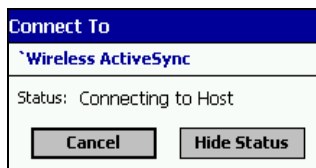
*Note: You can also start the device search by tapping Find in the Bluetooth Devices screen. See Scenario #2 on the previous page.*

- (b) After the search is complete, select the computer you wish to ActiveSync with and tap Select. If the computer is not listed, make sure the computer id discoverable and tap Refresh to search again.



If you would like to save the new computer to your Bluetooth Devices manager, check **Save selection for future use**.

- (c) After you tap **Select**, a service discovery phase will begin.
- (d) The **Connect To** screen will appear, reporting that it is trying to connect to **Wireless ActiveSync**.




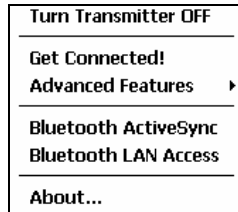
- (e) After a successful connection is made, the status screen will report **Connected**. Now you are ready to synchronize, if desired.



## Bluetooth LAN Access

This section explains how to use the *Bluetooth* LAN Access feature to quickly and easily connect to a *Bluetooth*-enabled LAN access point.

1. Tap on the *Bluetooth* icon . In the pop-up menu, select *Bluetooth LAN Access*.



*Note: If you installed Socket OBEX, the menu will also list Transfer via Bluetooth.*

2. The next screens will vary depending on if your *Bluetooth* Devices folder contains any access points, and if one is chosen as your favorite. Please refer to the appropriate scenario:

SCENARIO #1: Your *Bluetooth* Devices folder contains no favorite access point.



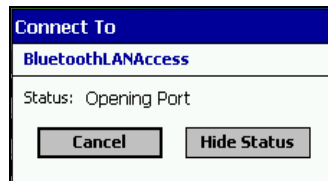
- (a) When you tap *Bluetooth* LAN Access, a screen will appear that allows you to choose which access point to connect to in your *Bluetooth* Devices folder. Choose an access point from the list and tap Select.



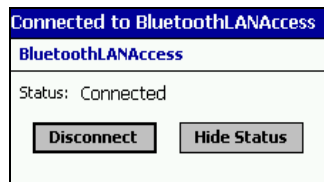
If you would like to save the new access point to your Bluetooth Devices manager, check *Save* selection for future use.

*Note: If your access point is not listed, tap Find and proceed as described in Scenario #3.*

- (b) Your mobile computer will try to connect to the selected access point.



- (c) If your LAN requires a passkey, a screen will appear, asking for the passkey. Enter the passkey, then tap **OK**.
- (d) After a successful connection is made, the status screen will report **Connected**.

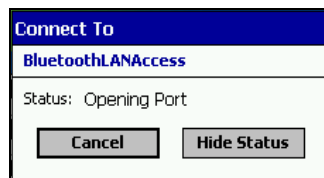


- (e) Now you are ready to access your LAN for Internet access, files, etc.

SCENARIO #2: Your *Bluetooth Devices* folder contains a favorite access point.



- (a) When you tap *Bluetooth LAN Access*, your mobile computer will automatically try to connect with your favorite access point.



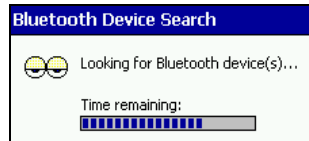
- (b) If your LAN requires a passkey, a screen will appear, asking for the passkey. Enter the passkey, then tap **OK**.
- (c) After a successful connection is made, the status screen will report **Connected**.



- (d) Now you are ready to access your LAN for Internet access, etc.

SCENARIO #3: Your *Bluetooth* Devices folder has no access points.

- (a) When you tap *Bluetooth* LAN Access, the mobile computer will automatically begin to search for new *Bluetooth* devices.



*Note: You can also start the device search by tapping Find in the Bluetooth Devices screen. See Scenario #2 on the previous page.*

- (b) After the search is complete, select the access point you wish to connect to. Tap Select. If the access point is not listed, tap Refresh to search again.



If you would like to save the new access point to your Bluetooth Devices manager, check **Save** selection for future use.

- (c) After you tap Select, a service discovery phase will begin.



- (d) If the LAN requires a Passkey, a screen will appear, asking for the Passkey. Enter the passkey, then tap OK.
- (e) After a successful connection is made, the screen will report Connected.

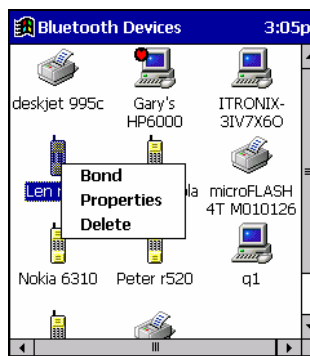


- (f) Now you are ready to access your LAN for Internet access, files, etc.

## Bluetooth Faxing

Many *Bluetooth* phones and other types of *Bluetooth*-enabled devices support faxing. This chapter explains how to use such a device with the *Bluetooth* Card and your mobile computer for wireless faxing. The *Socket Bluetooth* Connection Kit does not include faxing software. You must obtain *Bluetooth* faxing software separately from a third party.

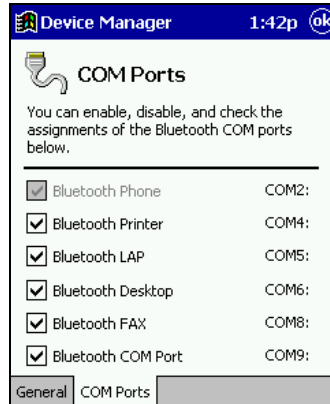
1. If using a *Bluetooth* phone, use the Get Connected! Wizard to connect to the phone. If using another type of *Bluetooth*-enabled device, use the Device Discovery Wizard to connect it to your mobile computer.
2. Make sure your *Bluetooth*-enabled device supports faxing.
  - In the *Bluetooth* Devices folder, select the device.
  - View the device's properties by either tapping on the properties icon or tapping Device | Properties. On a Pocket PC, you can also tap and hold your stylus on the device. In the pop-up menu, select Properties.



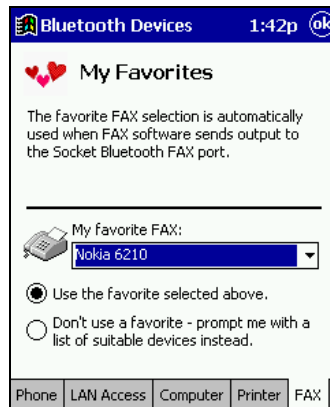
- Tap on the Services tab. Make sure Fax is listed. Tap ok.



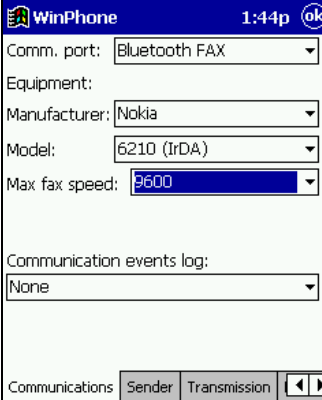
3. Make sure a COM port is enabled for faxing.
  - Tap on the *Bluetooth* icon. Select **Advanced Features**, then **My Bluetooth Device**. Tap on the **COM Ports** tab.
  - In the **COM Ports** screen, make sure *Bluetooth Fax* is checked.
  - Note the COM port number assigned to faxing. You may need this to configure your fax software. Tap **ok**.



4. Assign your *Bluetooth* phone as your favorite fax.
  - In the *Bluetooth* Devices folder, tap **Tools | My Favorites**.
  - Tap on the **FAX** tab.
  - Select **Use the favorite selected above**, then select your phone from the drop-down menu. Tap **ok**.



5. Now you are ready to use your fax software. While configuring the fax connection, select either *Bluetooth FAX* or the COM port assigned to *Bluetooth* faxing.



The image shows a 'WinPhone' configuration window with a blue title bar. The title bar contains the text 'WinPhone' on the left, '1:44p' in the center, and an 'ok' button on the right. The main area of the window contains several configuration options, each with a label and a dropdown menu:

- 'Comm. port:' with a dropdown menu showing 'Bluetooth FAX'.
- 'Equipment:' with a dropdown menu.
- 'Manufacturer:' with a dropdown menu showing 'Nokia'.
- 'Model:' with a dropdown menu showing '6210 (IrDA)'.
- 'Max fax speed:' with a dropdown menu showing '9600'.
- 'Communication events log:' with a dropdown menu showing 'None'.

At the bottom of the window, there is a 'Communications' section with two buttons: 'Sender' and 'Transmission'. To the right of these buttons are two small square buttons with left and right arrow symbols.

## Chapter 4 **Advanced Features**


This chapter explains optional steps you may choose to perform while installing and/or using the *Bluetooth* Card.

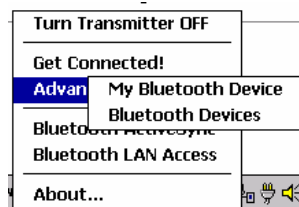
The steps covered in this chapter include:

- Setting up your *Bluetooth* Card
- Viewing and enabling/disabling *Bluetooth* COM ports
- Using the *Bluetooth* Device Discovery Wizard
- Using the *Bluetooth* Device Bonding Wizard
- Viewing device properties
- Setting up a Favorite Device
- Changing views
- Deleting an item from the *Bluetooth* Devices folder

## Set up Your *Bluetooth* Card

*Note: If you use the Get Connected! Wizard which is recommended for normal usage, then this step is not necessary. This step would be used to change the friendly name of your mobile computer.*

1. After you insert the *Bluetooth* Card, the *Bluetooth* icon  should appear in the task tray (visible from the Today screen). Tap on the icon.
2. In the pop-up menu, select **Advanced Features**, then **My *Bluetooth* Device**.



*Note: If you installed Socket OBEX, the menu will also list Transfer via Bluetooth.*

3. In the **My *Bluetooth* Device** screen, you can modify the **Friendly Name** and make any desired configuration changes. When done, tap **OK**.




*Note:*

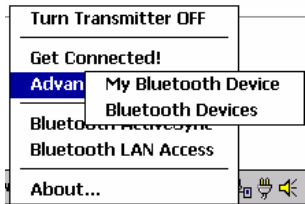
- *In normal phone connect operation, Discoverable mode is not needed and should be disabled.*
- *If you do enable Discoverable mode (e.g., for ActiveSync), note that it does not shut off by itself. To save power, remember to disable it when not needed.*
- *Connectable, Use Authentication, and Use Encryption are also not required for printing or dial-up networking applications.*
- *Check Use Authentication to enable the Use Encryption option.*



# Assign COM Ports

Follow these steps to view and/or modify the *Bluetooth* COM ports.

1. Tap on the *Bluetooth* icon  (in the *Today* screen). Select *Advanced Features* then *My Bluetooth Device*.

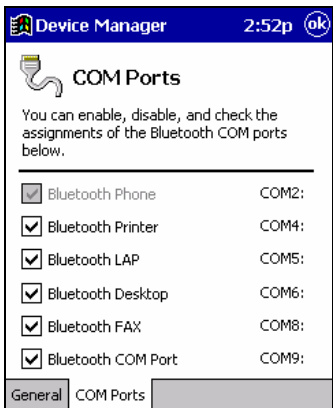


*Note: If you installed Socket OBEX, the menu will also list Transfer via Bluetooth.*

2. The *My Bluetooth Device* screen will appear. Tap on the *COM Ports* tab.




3. As needed, view and/or enable/disable the *Bluetooth* COM port assignments. Tap *ok*.

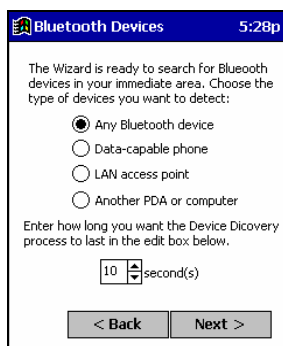


*Note: The Bluetooth Phone port cannot be disabled.*

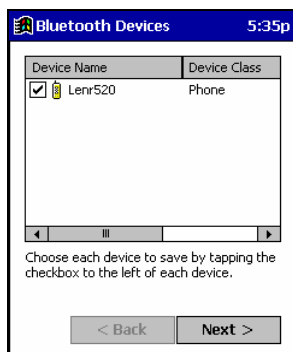
## Discover *Bluetooth* Device(s)

Follow these steps to discover other *Bluetooth* devices nearby, including non-phone devices. The Device Discovery Wizard is a more detailed alternative to using the *Bluetooth* “Get Connected!” Wizard, *Bluetooth* ActiveSync or *Bluetooth* LAN Access options. The Device Discovery Wizard allows you to discover any type of *Bluetooth* device.

1. If not open, launch the *Bluetooth* Devices folder: tap on the *Bluetooth* icon (in the *Today* screen). Select **Advanced Features**, then *Bluetooth* Devices.
2. In the *Bluetooth* Devices Folder, tap on the Device Discovery icon . Or you can tap on Tools. In the pop-up menu, select Device Discovery.
3. Follow the *Bluetooth* Device Discovery Wizard to search for *Bluetooth* devices nearby. When prompted, select the device type you seek.



4. When the search is complete, a screen will report the discovered *Bluetooth* devices. Check the box next to any device you wish to save information about, (i.e., any devices you wish to connect to). Tap **Next>**.



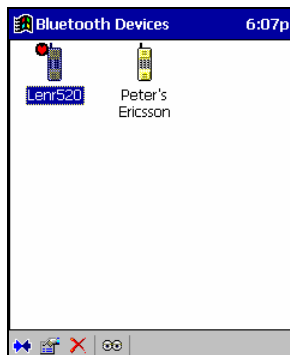
5. A service discovery phase will begin, 5-10 seconds per chosen device.
6. In the next screen, tap **Finish**.


## Bond with Discovered Device(s)

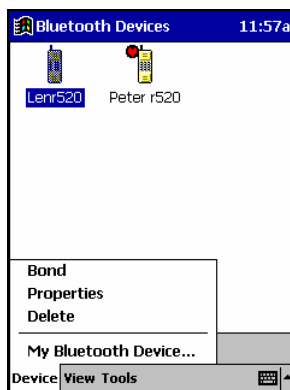
Follow these steps to bond with an already discovered *Bluetooth* device. In most cases, bonding is for establishing secure communications with a *Bluetooth*-enabled phone. This is a more detailed alternative to using the *Bluetooth* “Get Connected! Wizard.”

*Important!*

- *Do not try to bond with a Motorola Timeport 270C or Nokia 6310!*
  - *Do not use this method to bond with a printer! The third-party printing software included on the installation CD also handles bonding.*
1. If not open, launch the *Bluetooth* Devices folder: Tap on the *Bluetooth* icon (in the *Today* screen). Select *Advanced Features*, then *Bluetooth Devices*.
  2. Tap and hold your stylus on the *Bluetooth* device you want to bond with. In the pop-up menu, select **Bond**.



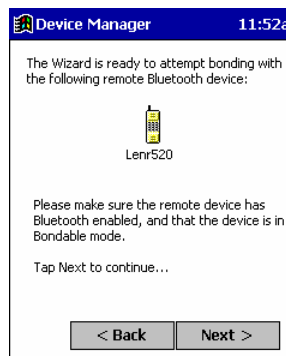
3. Alternatively, after selecting a device, tap on the **Bond** icon . Or tap on **Device**, then select **Bond**.



4. The *Bluetooth* Device Bonding Wizard will launch. Follow the wizard to bond with your selected device.



5. As prompted, make sure the *Bluetooth* device that you want to bond with is in Bondable mode.



6. If the remote device is set up to accept bonding, a *Bluetooth* Passkey screen will appear. To continue bonding, enter the correct passkey and tap Reply.



7. When you have successfully bonded with the other device, tap **Finish**.

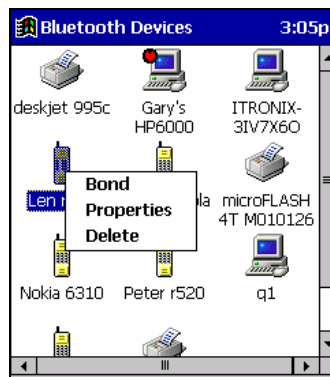
## View Device Properties

Follow these steps to view the properties of an already discovered device.

1. If not open, launch the *Bluetooth Devices* folder.  
Tap on the *Bluetooth* icon (in the *Today* screen for Pocket PCs). Select *Advanced Features* then *Bluetooth Devices*.

2. Select a device. Tap on the *Properties* icon , or tap on *Device* then select *Properties*.

Alternatively, you can tap and hold your stylus on the *Bluetooth* device you want to view information about. In the pop-up menu, select *Properties*.



3. Use the *General* and *Services* screens to research device properties.

If needed, assign a new device type icon by tapping on the arrow buttons in the *General* screen. You can also use the *Device name* field to rename the device. When done, tap *ok* for the setting to take effect.



## Set up Your Favorite Device

Follow these steps to set up default devices in the *Bluetooth* Devices folder.

*Note: The Get Connected! Wizard automatically assigns the favorite phone.*

1. Tap on Tools and select My Favorites.
2. Tap on the tab for the type of device you would like to set a favorite for. If needed, use the arrow buttons to scroll and find the tab you need.




*Note: Tabs will appear only for COM ports you have enabled. To enable a port, refer to the “Assign COM Ports” section earlier in this chapter.*

3. To select a favorite device, select Use the favorite selected above. In the drop-down menu, select your device. Tap ok.
4. After setting a device as your favorite, its icon will appear in the *Bluetooth* Devices folder with a heart next to it.



### ***What if I can't connect to a device in the Bluetooth Devices folder, or I can't select it as my favorite?***

*You can connect to a device only if its services have been successfully discovered. Follow these steps to perform a service discovery:*

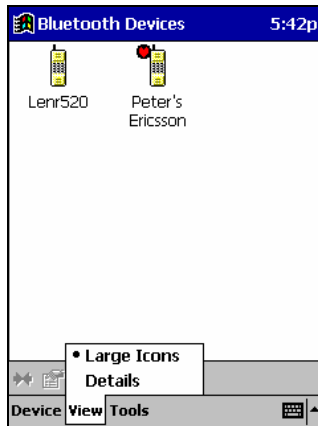
*With the device selected in the folder, tap on Properties , then select the Services tab. Tap the Update button.*

*Please report any devices that you have problems discovering services for. Email [askBluetooth@socketcom.com](mailto:askBluetooth@socketcom.com)*

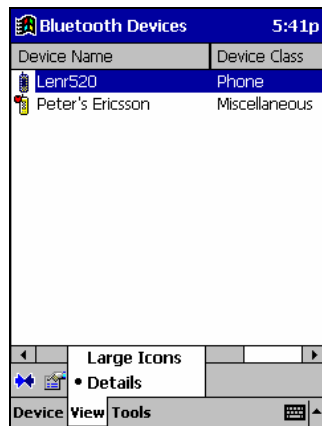
## Change Views

You can switch between the Large Icons or Details views for the *Bluetooth* Devices folder.

1. In *Bluetooth* Devices, tap on *View*.
2. In the pop-up menu, choose between Large Icons or Details.



*Large Icons view*



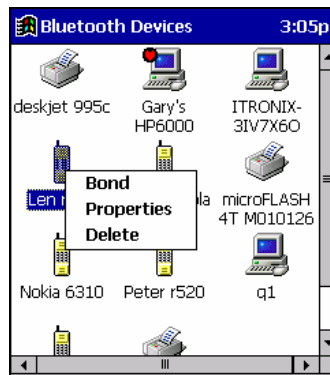
*Details view*


*Note: In Details view, scroll right to see the current Bonded status.*

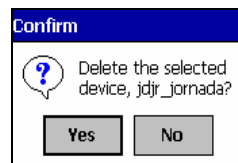
## Delete a Device from the Folder

If you no longer plan to connect with it, you can delete a device from the *Bluetooth* Devices folder.

1. If not open, launch the *Bluetooth* Devices folder.
2. Pocket PCs only: Tap and hold your stylus on the device you wish to delete. In the pop-up menu, select Delete.



3. Alternatively, after selecting a device, tap on the Delete icon . Or tap on Device then select Delete.
4. A Confirm screen will appear. Tap Yes.





## Chapter 5 Socket OBEX

This chapter explains how to use the Socket OBEX (object exchange) application to trade business cards, contacts or files with another *Bluetooth* device that supports OBEX.

Socket's *Bluetooth* OBEX application supports five operations:

- Exchange Business Cards
- Send a Contact
- Send a File
- Browse Remote Device
- Receive Contact or File
- Enable File Sharing

The first four operations — exchange business cards, send a contact, send a file, and browse remote device — are client-oriented. They involve initiating an object exchange.

The last two operations — receive contact or file and enable file sharing — are server-oriented. They involve accepting objects in an exchange initiated by another *Bluetooth* device.

### ***IMPORTANT!***

***If you have not done so already, be sure to run the OBEX Installer from the Socket Bluetooth Card Installation CD. Otherwise, you will not be able to perform any OBEX operations with the Bluetooth Card.***

***After you install Socket OBEX, the Transfer via Bluetooth option will appear in the Bluetooth menu for you to select OBEX operations.***

## Exchange Business Cards

1. Make sure both *Bluetooth* devices have a business card assigned to it.

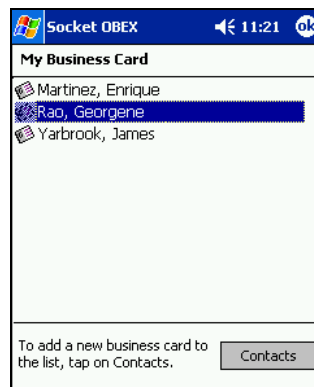
*Note: If each device does not have a business card assigned to it, you will not be able to exchange business cards.*

To assign a business card to your mobile computer, do the following:

- Tap on the *Bluetooth* icon. In the pop-up menu, tap **Advanced Features | My Bluetooth Device**.
- Tap on the **Object Sharing** tab. Under **My business card**, tap **Assign...**



- In the next screen, select your business card and tap **ok**. If your business card is not listed, tap on the **Contacts** button to create one.

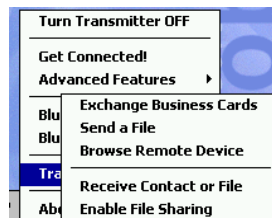


- When you return to the **Object Sharing** screen, tap **ok**.

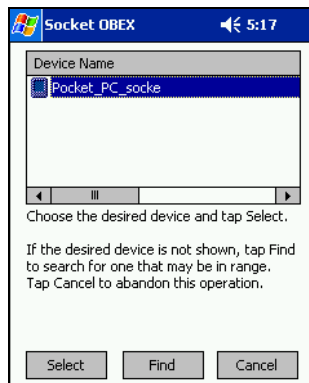
2. Make sure the other *Bluetooth* device is set up to receive a contact. The device must support the OBEX Object Push profile.

*Note: If the other device is also using the Socket Bluetooth Connection Kit, you can set it up to receive a contact by tapping the Bluetooth icon. In the pop-up menu, tap Transfer via Bluetooth | Receive Contact or File.*

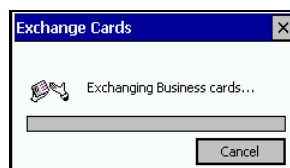
3. Now you are ready to exchange business cards. Tap on the *Bluetooth* icon. In the pop-up menu, tap Transfer via *Bluetooth* | Exchange Business Cards.



4. If your mobile computer has no devices in the *Bluetooth* Devices Folder, then it will begin to search for *Bluetooth* devices nearby.
5. Select the *Bluetooth* device you wish to exchange business cards with. If the device is not listed, tap Find.



6. Your mobile computer will begin to exchange business cards. After the exchange, the new business card should appear in your Contacts list.



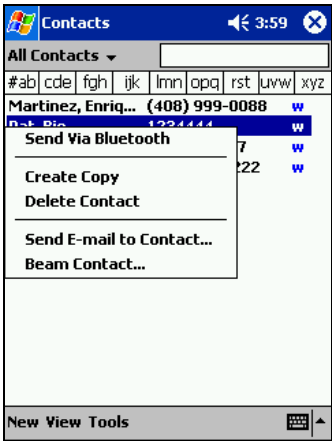
*Note: Depending on the remote device's capabilities, it may only accept your business card but not send one to your device..*

# Send a Contact

1. Make sure the other *Bluetooth* device is set up to receive a contact. It must support the OBEX Object Push server profile. Refer to the documentation that came with the device for instructions.

*Note: If the other device is also using the Socket Bluetooth Connection Kit, you can set it up to receive a contact by tapping the Bluetooth icon. In the pop-up menu, tap Transfer via Bluetooth | Receive Contact or File.*

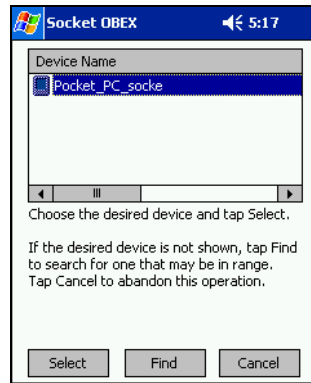
2. Now you are ready to send a contact. Go to your Contacts folder.
3. Tap and hold your stylus on the contact(s) you would like to send. In the pop-up menu, select **Send Via Bluetooth**.



4. If your mobile computer has no devices in the *Bluetooth Devices* Folder, then it will begin to search for *Bluetooth* devices nearby.



5. Select the *Bluetooth* device you wish to send the contact(s) to. If the desired device is not listed, tap **Find**.



6. Your mobile computer will process and send the contact(s).

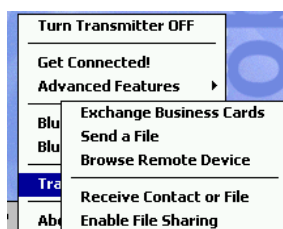


## Send a File

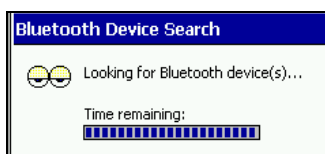
1. Make sure the other *Bluetooth* device is set up to receive a file. It must support the OBEX Object Push server profile. Refer to the documentation that came with the device for instructions.

*Note: If the other device is also using the Socket Bluetooth Connection Kit, you can set it up to receive a file by tapping the Bluetooth icon. In the pop-up menu, tap Transfer via Bluetooth | Receive Contact or File.*

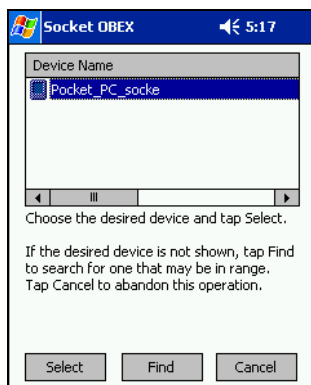
2. Now you are ready to send a file. Tap on the *Bluetooth* icon. In the pop-up menu, tap Transfer via *Bluetooth* | Send a File.



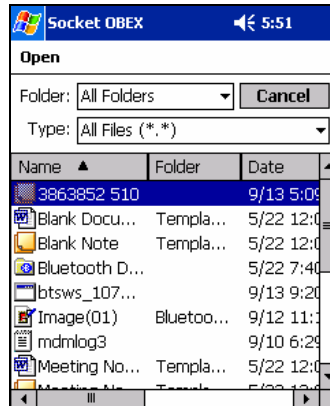
3. If your mobile computer has no devices in the *Bluetooth* Devices Folder, then it will begin to search for *Bluetooth* devices nearby.



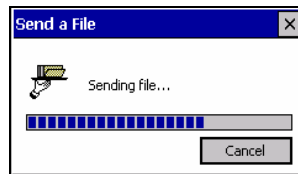
4. Select the *Bluetooth* device you wish to send a file. If the desired device is not listed, tap Find.



5. In the next screen, tap on the file you wish to send. You can use the **Folder** and **Type** drop-down menus to search for your file. Also, you can scroll horizontally to view the folder, date, size, type, and location of each file.



6. Your mobile computer will send the file.



## Browse Remote Device

The *Bluetooth* File Explorer lets your mobile computer share files with another *Bluetooth* device. The other device must support the OBEX File Transfer server profile.

This section covers the following file transfer operations:

- Prepare for file transfer
- Send/receive file(s) or folder(s)
- Create a folder
- Delete file(s) or folder(s)
- Refresh remote view
- Connect/disconnect
- Exit the program

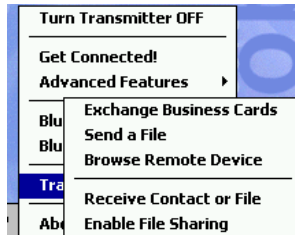
*Note: “Local device” refers to the mobile computer you are running the Socket OBEX from. “Remote device” refers to the Bluetooth device you are trying to transfer files with.*

### Prepare for File Transfer

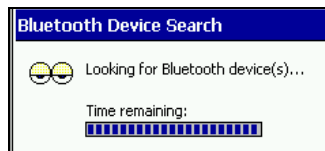
1. Make sure the remote device has file sharing enabled. It must support the OBEX File Transfer server profile.

*Note: If the other device is also using the Socket Bluetooth Connection Kit, you can enable file sharing by tapping the Bluetooth icon. In the pop-up menu, tap Transfer via *Bluetooth* | Enable File Sharing.*

2. Now you are ready to browse the remote device. Tap on the *Bluetooth* icon. In the pop-up menu, tap Transfer via *Bluetooth* | Browse Remote Device.

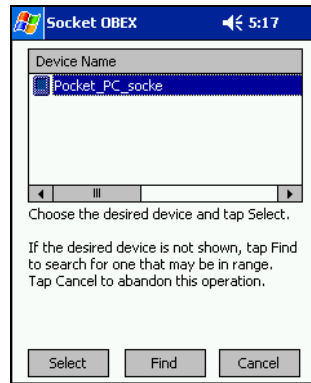


3. If your mobile computer has no devices in the *Bluetooth* Devices Folder that supports OBEX File Transfer, then it will begin to search for *Bluetooth* devices nearby.





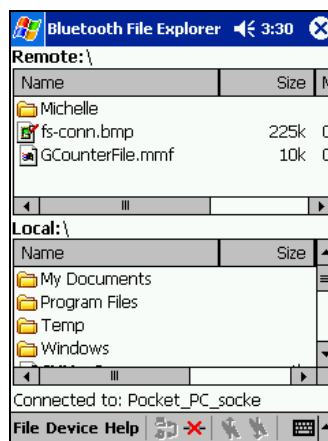
4. Select the *Bluetooth* device you wish to browse. If the desired device is not listed, tap Find.



5. Your mobile computer will begin to establish a file sharing connection.

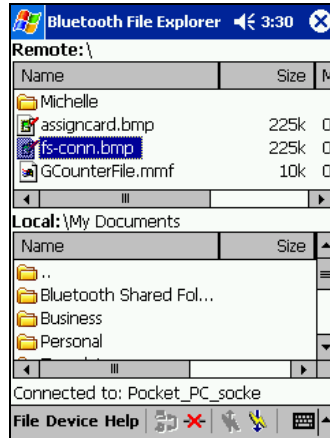


6. After the devices successfully connect, the *Bluetooth File Explorer* will appear. Half of the screen shows contents of the remote device, while the other half shows contents of your device (the local device). The very bottom of the screen reports the connection status.



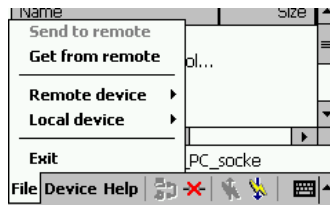
### Send/Receive File(s) or Folder(s)



1. Select the file(s) or folder(s) that you wish to transfer. You can only select items from one device per transfer session.
  - Single-tap items to select them for transfer.
  - Double-tap on a folder to open it and see its contents.



*Note: A copy of the selected items will be transferred, not the original.*

2. There are two different ways to initiate the transfer.



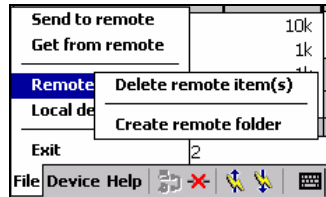
- Tap on the File menu. Select **Send to remote** or **Get from remote**, as applicable. The inappropriate option should be gray.
  - Tap on the Send to remote icon  or Get from remote icon , as applicable. The inappropriate icon should be gray.
3. A screen will report the status of the transfer.



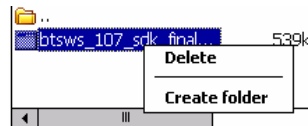
4. After the transfer, a copy of each selected item should appear in the other device.

### **Create a Folder**

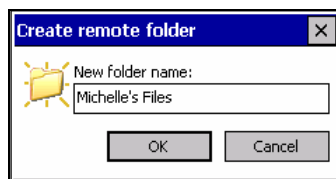
1. Tap on the File menu. Select Remote device or Local device, wherever you want to create a folder, then tap Create remote folder or Create local folder, as applicable.



2. Alternatively, on Pocket PCs, you can tap and hold your stylus on an item in either the remote or local device that you wish to put in a new folder. In the pop-up menu, select Create folder.



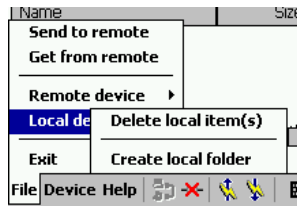
3. In the next screen, enter a name for your new folder. Tap OK.



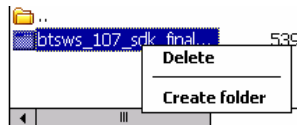
4. The new folder should be listed under the appropriate device.

### **Delete File(s) or Folder(s)**

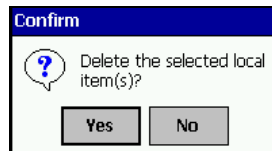
1. Select item(s) that you wish to delete. You can only delete item(s) from one device at a time.
2. Tap on the File menu. Select Remote device or Local device, wherever the item(s) are located, then tap Delete remote item(s) or Delete local item(s), as applicable.



3. Alternatively, on Pocket PCs, you can tap and hold your stylus on an item in either the remote or local device that you wish to put in a new folder. In the pop-up menu, select Delete folder.

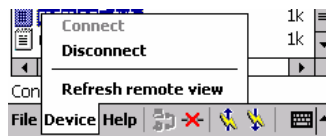


4. In the Confirm screen, tap Yes.



### **Refresh Remote View**

1. Tap on the Device menu. Select Refresh remote view.



2. Your local device will begin to read the contents of the remote device.
3. After a few seconds, the view of the contents of the remote device will be refreshed.

## Connect/Disconnect

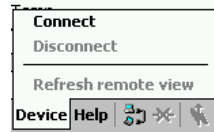
To connect to the remote device, do the following:

1. Make sure the remote device has file sharing enabled.
2. Start the connection process by either of two methods:

- Tap on the Device menu. Select Connect.



- Tap on the Connect icon



3. In the next screen, select the device you wish to connect to. Tap Select. Your mobile computer will attempt to connect to the device selected.

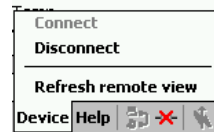
To disconnect from the remote device, do the following:

1. Start the disconnection process by either of two methods:

- Tap on the Device menu. Select Disconnect.



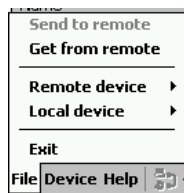
- Tap on the Connect icon



2. Your mobile computer will disconnect from the remote device. Afterwards, no contents will be listed for the remote device.

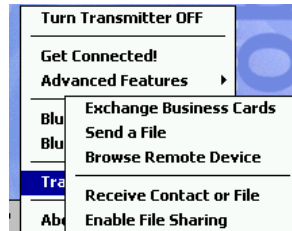
## Exit Bluetooth File Explorer

To exit the *Bluetooth* File Explorer, tap File | Exit.

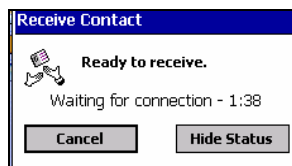


## Receive Contact or File

1. Tap on the *Bluetooth* icon. In the pop-up menu, tap Transfer via *Bluetooth* | Receive Contact or File.



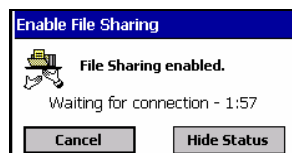
2. The Receive Contact or File status screen will appear. Your mobile computer will wait two minutes for the contact or file.



3. After successfully connecting to the remote device, the screen will report **Connected** then disappear. The new contact or file should now be on your device.
4. If two minutes passes before you receive the item, tap **Wait Again**.
5. After you receive the file or contact, the “Receive Contact or File” feature is automatically disabled.

## Enable File Sharing

1. Tap on the *Bluetooth* icon. In the pop-up menu, tap Transfer via *Bluetooth* | Enable File Sharing.
2. The Enable File Sharing status screen will appear. Your mobile computer will wait two minutes for the remote device to connect.



3. After successfully connecting to the remote device, the screen will report **Connected**.
4. If two minutes passes before you connect, tap **Wait Again**.
5. File sharing will be enabled until you end it by tapping **Cancel**.

## Chapter 6 The Socket Dialer

This chapter explains how to assign a dialing prefix and use the Socket Dialer to dial a number directly from your Contacts list. The Socket Dialer makes it quick and easy to perform dial-up networking.

If you have not done so already, be sure to run the Dialer Installer from the *Socket Bluetooth Card Installation CD*. While installing the program, you can also assign the dialing prefix.

*Note: The Socket Dialer has been verified to work with Nokia and Ericsson phones and is known not to work with the Motorola 270c, NTT Docomo Paldio 633S or Sony au C413S phone. Results may vary with other phones that are not listed as being supported by the Socket Bluetooth system.*

### **Assign a Dialing Prefix**

If you have not already assigned a dialing prefix during the install process, you can do so by following these steps:

1. Go to Start | Settings | System. Tap on Socket Dialer.

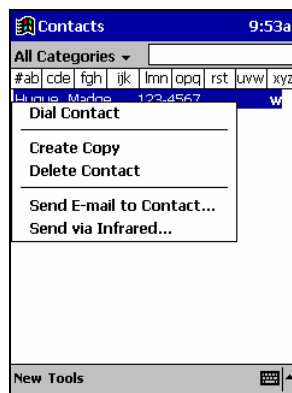


2. Select the appropriate Dialing Prefix, then tap ok.



## Use the Socket Dialer

1. To use the dialer, the mobile computer must already be connected to the *Bluetooth* phone. You can use the Get Connected! Wizard to do this. Also, the *Bluetooth* phone must be selected as your favorite.
2. Go to Start | Contacts.
3. Tap and hold your stylus on the contact you wish to dial to. In the pop-up menu, select Dial Contact. Alternatively, you can tap on Tools and select Dial Contact.

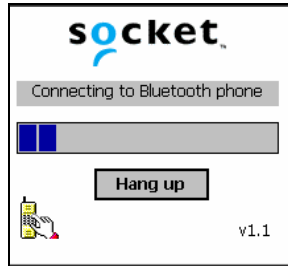


4. If you have multiple phone numbers for a contact, a screen will appear listing them, including any dialing prefix you may have assigned. Select the phone number you wish to dial.





5. Your mobile computer will connect to your phone and begin dialing.



Note: The Socket Dialer can dial a phone number containing any of the 17 following non-numeric characters:

\* # + . / ! @ - \ space A B C D T P W

Additionally, the following string can be included in a phone number:

(,')

The Socket Dialer can not dial a phone number containing non-numeric characters other than those listed above.

Socket recommends that you follow the standard Microsoft Outlook format for phone numbers.

## Chapter 7 Bluetooth Printing

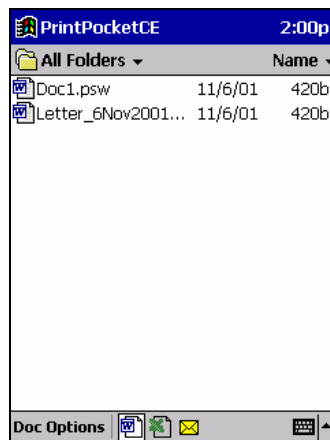
This chapter explains how to print from a *Bluetooth*-enabled printer, using the PrintPocketCE software included on the *Socket Bluetooth Card Installation CD*. The *Socket Bluetooth* Connection Kit includes a 30-day trial version of PrintPocketCE. For a full version, please visit: [www.fieldsoftware.com](http://www.fieldsoftware.com)

If you have not done so already, be sure to install the PrintPocketCE program. To find the install for this program on the installation CD, go to the Third Party folder, then the Field Software folder.

1. Start the printing program. Go to Start | Programs | PrintPocketCE.
2. In the welcome screen, tap OK.



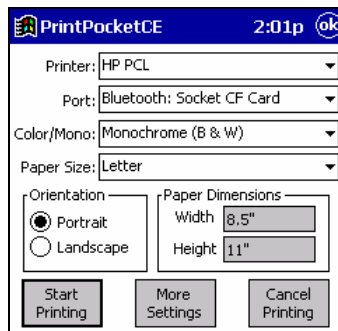
3. In the main screen, tap on the file you wish to print.



To locate your file:

- Tap on the Word icon at the bottom of the screen to view a list of Pocket Word docs, TXT, or RTF files.
- Tap on the Excel icon to view a list of Pocket Excel files
- Tap on the yellow envelope icon to view email messages.
- Tap on the Doc/Excel/Email Options menu and select another type of printing (e.g., Go to email printing).
- Use the folders drop-down menu to switch between folders.

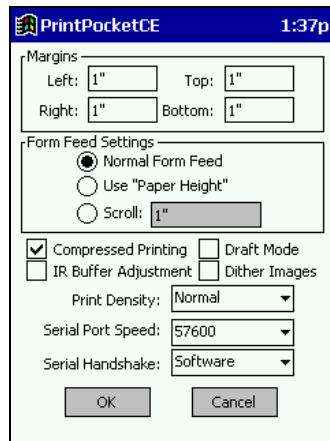
4. The next screens let you adjust the printer settings. Make sure the correct printer is chosen. For **Port**, choose **Bluetooth: Socket CF Card**. Make any other necessary printer settings.



*Note: for a Pocket Excel file, the first screen lets you adjust printing properties. Tap **Continue** to select the correct printer and port.*

*Instead of **Bluetooth: Socket CF Card**, you can choose the **COM** port assigned to your Bluetooth printer.*

If needed, tap on **More Settings** to adjust margins, form feed, and other settings. Tap **OK** to return to the main printing screen.



When done adjusting the settings, tap **Start Printing**.

5. The mobile computer will search for a *Bluetooth* printer. After the search, the *Bluetooth* Devices folder will appear. Select the *Bluetooth* printer, then tap **Select**.



If the mobile computer fails to detect the *Bluetooth* printer, make sure the printer is on, discoverable, and in range. Tap **Find** to repeat the search.

6. The document will begin printing.
7. To exit the program, tap **Doc Options**. In the pop-up menu, tap **Exit**.

# Appendix A Specifications

## CompactFlash Card

### *Physical Characteristics:*

**Dimensions:** 36.4 x 42.8 x 3.3 mm

**Mass:** 10 g

### *Power Consumption (3.3 V Supply):*

**Idle:** 16 mA    **Typical:** 40 mA    **Maximum:** 90 mA

### *Interface Standards:*

**CompactFlash Interface:** CompactFlash I/O, Type I

**With CompactFlash-to-PC Card Adapter:** PCMCIA, Type II

**Serial Communications:** TTL

**Software Compatibility:** Windows COM port

### *Hardware Compatibility:*

#### **Standard Card (without PC Card adapter):**

Pocket PC 2000/2002/2003 with CompactFlash I/O slot

#### **With CompactFlash-to-PC Card adapter:**

Pocket PC 2000/2002/2003 with PC Card slot.

**Software Included:** *Socket Connection Kit Installation CD*

**Compatible Applications:** *PrintPocketCE*

**Warranty: CompactFlash Card:** Three years

### *Certification:*

FCC: Part 15, Section 15.247

Industry Canada: RSS 210

Bluetooth 1.1

ETS EN300 328-2

ETS EN301 489-1

ETS EN301 489-17

TELEC 01NYDA1342

CompactFlash Spec. 2.0

## SDIO Card

### *Physical Characteristics:*

**Dimensions:** 40 x 24 x 2.1 mm

**Mass:** 4 g (maximum)

### *Power Consumption (3.3 V Supply, in Tx/Rx):*

**Typical:** 50 mA    **Maximum:** 100 mA

### *Interface Standards:*

**SDIO Interface:** SDIO

**Serial Communications:** TTL

### *Operating System Support:*

Any Pocket PC 2000/2002/2003 running SDIO Now! software

### *Software Compatibility:*

Windows COM port

### *Hardware Compatibility:*

#### *Standard Card*

Pocket PC 2000/2002/2003 with SDIO slot

### *Software Included:*

Socket Connection Kit Installation CD

### *Compatible Applications:*

PrintPocketCE

### *Warranty:*

**SDIO Card:** Three years

### *Certification:*

FCC: Part 15, Section 15.247

Industry Canada: RSS 210

Bluetooth 1.1

SDIO card Type-B for Bluetooth 1.0

ETS EN300 328-2

ETS EN301 489-1

ETS EN301 489-17

TELEC

**CE0681!**

 01NYCA1058

## Appendix B Safety and Usage Tips

### About *Bluetooth* and Health

*Bluetooth* wireless technology allows you to use short-range radio signals to connect a variety of devices, such as mobile phones, Pocket PCs, notebook computers, printers, LAN access points, and many other devices at home or work. These radio signals replace the cables that have traditionally connected these devices.

*Bluetooth* products have small radio transmitters and receivers. Output power is normally very low, only 1 mW (1/1000 of a watt). This gives a working range of approximately 10 meters.

The maximum exposure levels from *Bluetooth* products are far below recommended safety guidelines. At most, typical *Bluetooth* devices (1mW) reach only one percent of the prescribed safety levels.

### CompactFlash Card

#### Product Care

- Do not expose your product to liquid, moisture or extreme humidity.
- Do not expose your product to extreme high or low temperatures.
- Do not expose your product to lit candles, cigarettes, or cigars, or to open flames, etc.
- Do not drop, throw or try to bend the product, as rough treatment could damage it.
- Do not paint your product, as the paint could obstruct parts and prevent normal use.
- Do not attempt to disassemble your product: a broken warranty seal will void the warranty. The product does not contain consumer serviceable components. Should your *Bluetooth* Card need service, please contact Socket technical support at: [support@socketcom.com](mailto:support@socketcom.com).
- Treat your product with care. Keep in a clean and dust-free place.
- Changes or modifications of this product, not expressly approved by Socket, may void the user's authority to operate the equipment.

#### Antenna Care

Do not place a metallic shield around your *Bluetooth* Card since it will reduce the radio transmission efficiency.

### **Efficient Use**

For optimum performance, please make sure that there is no metal surrounding your *Bluetooth* Card.

### **Driving**

RF energy may affect some electronic systems in motor vehicles, such as car stereo, safety equipment, etc. Check with your vehicle manufacturer's representative to be sure that your *Bluetooth* Card will not affect the electronic system in your vehicle.

### **Aircraft**

- Turn off your *Bluetooth* Card antenna before boarding any aircraft.
- To prevent interference with communications systems, you must not use your *Bluetooth* Card while the plane is in the air.
- Do not use it on the ground without permission from the crew.

### **Radio Frequency Exposure**

Your *Bluetooth* Card is a radio transmitter and receiver. When in operation, it communicates with a *Bluetooth*-equipped mobile phone, mobile computer or other device by receiving and transmitting radio frequency (RF) magnetic fields in the frequency range 2400 to 2500 MHz. The output power of the radio transmitter is 0.001 Watt.

The *Bluetooth* Card unit is designed to be in compliance with the RF exposure limits set by national authorities and international health agencies<sup>1</sup> when installed or used separately from other antennas or radio transmitters.

---

<sup>1</sup> Examples of RF exposure standards and guidelines:

ICNIRP, "Guidelines for limiting exposure to time-varying electric, magnetic, and electromagnetic fields (up to 300 GHz)", International Commission on Non-Ionizing Radiation Protection (ICNIRP), Health Physics, vol. 74, pp 494-533, April 1998.

99/519/EC, EU Council Recommendation on the limitation of exposure to the general public to electromagnetic fields 0 Hz – 300 GHz, Official Journal of the European Communities, July 12, 1999.

ANSI/IEEE C95.1-1992, "Safety levels with respect to human exposure to radio frequency electromagnetic fields, 3 kHz to 300 GHz", The Institute of Electrical and Electronics Engineers, Inc., New York, 1991.

FCC Report and Order, ET Docket 93-62, FCC 96-326, Federal Communications Commission (FCC), August 1996.

Radiocommunications (Electromagnetic Radiation Human Exposure) Standard 1999, Australian Communications Authority (ACA), May 1999.



## SDIO Card

### Product Care and Usage

- The SDIO *Bluetooth* Card is susceptible to physical damage. Do not hit the corners of the card or forcefully pull the card out of your device, or permanent damage can occur!
- Do not disassemble, modify or repair this unit. There is danger of fires, electrical shock, damage to the unit, and injury. Any repair is impossible. Do not remove the label and do not paste other labels. It may cause malfunction. Disassembling or remodeling this unit will invalidate the warranty and any other service plan.
- Do not use this unit in an area where people wearing pacemakers may be nearby (such as in a crowded train).
- People wearing a pacemaker should use the system at least 22 cm from the pacemaker.
- Do not use this unit in medical facilities such as hospitals or in other places near medical electronic equipment. Likewise, do not attach medical electronic equipment to the *Bluetooth* Card.
- Do not use the unit near automatic doors, fire detection devices, or other automatically controlled devices.
- Do not use this unit in an aircraft or place where this unit may electromagnetically affect other devices.
- If the *Bluetooth* SDIO Card gives any electromagnetic interference to other devices, either turn off the mobile computer containing the *Bluetooth* Card or eject the *Bluetooth* Card from the mobile computer.
- Do not put the unit in your mouth.
- Do not use this unit in a bath or any other area where liquid may be spilt on the unit. Do not use this unit in an environment with high humidity or expose it to rain or mist. There is a risk of electrical shock.
- Do not expose your product to extreme high or low temperatures, or to rapidly changing temperatures.
- Do not insert any metal objects such as staples or paper clips into the unit.
- Do not touch the unit during or immediately after use in a mobile computer slot. There is a danger of burns from high heat levels. People with sensitive skin should also use caution.
- Do not place the unit in direct sunlight, in a closed car, near a heating device or any other location where the temperature may become high.
- Do not place the unit in a location where the temperature becomes extremely low.
- Do not place the unit in a location where the temperature changes rapidly.
- Do not place the unit in an extremely dusty location.

- Do not use the unit near a microwave oven or in areas where there is a risk of electrical shock, static electricity or electromagnetic interference.
- Do not use the *Bluetooth* Card in a place with risk of strong vibration.
- Do not use benzene or paint thinner to clean the *Bluetooth* Card.

#### **Restrictions**

- The *Bluetooth* SDIO Card was not designed to be used with systems directly responsible for sustaining human life. Avoid using this product with such systems (e.g., medical equipment for life support, surgery, etc.).
- When this product is to be used in installations responsible for human safety or the maintenance of public installations (e.g., main control or safety systems in nuclear power plants, mass transportation systems, etc.), special transport, maintenance, operation, and wiring (i.e., safety systems installed in close consultation with a Socket representative) becomes necessary. Please contact an authorized Socket service center.

## Appendix C Automatic Phone Connections

Some *Bluetooth* enabled phones let you set up automatic connections with devices they have successfully bonded with, without requiring you to manually enter a password every time you try to connect. If you would like to set up automatic connections between your phone and your mobile computer, follow the appropriate instructions below for your specific phone.

### **Motorola Timeport 270C:**

- On the phone, press MENU.
- Scroll to **Settings**, then press SELECT.
- Scroll to **Connection**, then press ON.
- On *Bluetooth* Link, press SELECT.
- Scroll to **Devices**, then press SELECT.
- Choose your mobile computer, then press EDIT.
- Scroll to **Access:Ask**, then press CHANGE.
- Scroll to **Automatic**, then press SELECT. Press DONE.

### **Nokia 3650/7650:**

- On the phone, press MENU.
- Scroll to **Connectivity**, then press Options.
- The **Open** option should be highlighted. Press Select.
- The *Bluetooth* option should be highlighted. Press Options.
- The **Open** option should be highlighted. Press Select.
- Scroll to the right tab to access the Paired devices list. Highlight your mobile computer, then press Options.
- Scroll to **Set as authorised**, then press Select.
- In the confirmation screen, press Yes .

### **Nokia 6310/8910/8910i:**

- On the phone, press MENU.
- Scroll to **10 Bluetooth**, then press SELECT.
- Scroll to **4 View Paired Devices**, then press SELECT.
- Highlight the Pocket PC, then press OPTIONS.
- Scroll to **3 Request Connection Authorization**, then press NO.

## Appendix D Troubleshooting

### SYMPTOM:

- I cannot connect to a device in my folder.

POSSIBLE REASONS	SOLUTION
The services for the devices have not been discovered.	In the <b>Bluetooth Devices</b> folder, tap on the <b>Properties</b> icon. Tap on the <b>Services</b> tab. In the <b>Services</b> screen, tap on the <b>Update</b> button.

### SYMPTOM:

- When I use the Get Connected! Wizard to connect to my phone, I get a screen that says *Partial Success*.

POSSIBLE REASONS	SOLUTION
The phone is not in Bondable mode.	Set your phone to Bondable mode. If needed, consult your phone's documentation for help.
The passkey is incorrect.	Make sure the same passkey is entered on the phone and your mobile computer. If using a pre-assigned passkey for the phone, verify that your passkey is accurate.

### SYMPTOM:

- When I insert the *Bluetooth Card*, I get a message that says *Unrecognized Card*.

POSSIBLE REASONS	SOLUTION
You did not install the software for the <i>Bluetooth Card</i> yet.	Remove the card and install the software.

**SYMPTOM:**

- My mobile computer cannot find any *Bluetooth* devices nearby.

POSSIBLE REASONS	SOLUTION
You are too far from other <i>Bluetooth</i> devices.	Move closer to the other <i>Bluetooth</i> device(s), within a range of 10 meters.
The <i>Bluetooth</i> device(s) nearby are not turned on.	Turn on the <i>Bluetooth</i> device(s) you wish to find.
The <i>Bluetooth</i> device(s) are not in discoverable mode.	Set the <i>Bluetooth</i> device(s) to discoverable mode. If needed, consult the device's documentation for help.

**SYMPTOM:**

- My mobile computer keeps powering down to protect memory contents.

POSSIBLE REASONS	SOLUTION
Your mobile computer's battery is low.	Recharge the battery.
The <i>Bluetooth</i> Card has been in Discoverable mode for a long time. This mode requires a lot of battery power and should be turned off whenever not needed.	Tap on the <i>Bluetooth</i> icon, then select <b>My <i>Bluetooth</i> Device</b> . Uncheck Discoverable.

**SYMPTOM:**

- When I try to connect my *Bluetooth* phone and mobile computer, the phone thinks that I am using a different mobile computer that I previously paired with the phone.

POSSIBLE REASONS	SOLUTION
The phone remembers the name and address of the mobile computer it last paired with via your <i>Bluetooth</i> Card.	Manually delete the pairing device and name from your phone. Refer to your phone's user documentation for instructions.

**SYMPTOM:**

- I can't make my Ericsson R520 phone discoverable.

POSSIBLE REASONS	SOLUTION
You attempted to bond with the phone, and when the phone presented a "pairing query," you entered No. This prevents the phone from being discoverable until it is reset.	Reset the phone by removing its battery.

## Appendix E Support Resources

### Socket On-Demand Support (SOS)

Socket On-Demand Support (SOS) is a virtual technical support assistant that focuses in on your specific question to provide the specific answers you need. SOS provides the quickest turnaround time and is the best place to start for technical support.



To access SOS, visit: [www.socketcom.com/support](http://www.socketcom.com/support) and click on the SOS icon.

A screenshot of the Socket SOS (Socket On-Line Support) web interface. The header shows the 'socket' logo with the tagline 'The Mobile Connection' and the text 'Welcome to SOS: Socket On-Line Support'. The main content area explains that SOS is a virtual technical support assistant and lists supported products: 56K Modem Card, Bluetooth Cards, Cordless 56K Modem, Digital Phone Cards, Wireless LAN Cards, Bar Code Scanners, Bluetooth GPS, Cordless Serial Adapter, and Serial I/O Cards. It also mentions that if SOS cannot answer an inquiry, users can submit questions to a Technical Support Engineer. At the bottom, there is a form with 'Name' (set to 'Guest') and 'Product' (a dropdown menu with 'Please select an option') fields, followed by a 'Submit' button.

If SOS cannot answer your inquiry, you can submit your question to a technical support engineer after the session. Your interaction session will be saved for reference to better serve you.

*Note: To help expedite live technical support, you will be asked to register your product and provide some information about your system configuration and environment.*

### Live Technical Support

**IMPORTANT!** To obtain technical support for your product, you must first register your product online at [www.socketcom.com/prodreg](http://www.socketcom.com/prodreg).



**socket**  
The Mobile Connection

Socket Communications, Inc. [HOME](#) | [SEARCH](#) | [CONTACT US](#)

[ABOUT US](#) | [PRODUCTS](#) | [EMBEDDED](#) | [SUPPORT](#) | [WHERE TO BUY](#)

### » Product Registration

Welcome to Socket's Product Registration and On-Line Technical Support web page. We have several levels of Customer Support in order to better serve our customers.

- At any time you can access [Socket On-Line Support \(SOS\)](#). This virtual technical support assistant can help you with your product support questions or FAQs for Bar Code Scanners, Bluetooth, Cordless, Digital Phone Card, GPS, Wireless LAN, Modems, and Serial products. SOS responds immediately to your inquiry, and no product registration is needed to use the system.
- Alternatively, if you would like personal assistance from one of Socket's technical support representatives, please register your product using the form below and follow the online process to submit an email inquiry. **Please allow 48 hours for a response.**

**Socket On-Line Support**

Virtual technical support assistant for Bar Code Scanners, Bluetooth, Cordless, Digital Phone Card, GPS, Wireless LAN, Modems, and Serial.

[Click here](#) 

#### Product Registration / Technical Support

**I am a new user**

Please select your Country or Region.

Country/Region  
Select a Country ▼

[Register >](#)

**I am a returning user**

Welcome back. Please sign in.

Email Address

Password

[Sign-in >](#)

After product registration, you will be presented with an option to 'submit a problem'. Click on this option to submit an email request for technical support. If we are unable to resolve your support inquiry via email, we can arrange for a technical support engineer to call you at a specific time.

*Please refrain from disassembling the CompactFlash or SDIO card.  
Disassembly of this device will void the product warranty.*



## Limited Warranty

Socket Communications Incorporated (Socket) warrants this product against defects in material and workmanship, under normal use and service, for the following period from the date of purchase:

Plug-in card: Three years

Incompatibility is not a defect covered by Socket's warranty. During the warranty period, Socket will, at its option, repair or replace the defective product at no charge when furnished with proof of retail purchase, provided that you deliver the product to Socket or to an authorized Socket Service Center.

The returned product must be accompanied by a return material authorization (RMA) number issued by Socket or by Socket's Authorized Service Center. If you ship the product, you must use the original container or equivalent and you must pay the shipping charges to Socket. Socket will pay shipping charges back to any location in the contiguous United States. This warranty applies only to the original retail purchaser and is not transferable.

Socket may, at its option, replace or repair the product with new or reconditioned parts and the returned product becomes Socket's property. Socket warrants the repaired or replaced products to be free from defects in material or workmanship for ninety (90) days after the return shipping date, or for the duration of the original warranty period, whichever is greater.

This warranty does not cover the replacement of products damaged by abuse, accident, misuse or misapplication, nor as a result of service or modification other than by Socket.

SOCKET IS NOT RESPONSIBLE FOR INCIDENTAL OR CONSEQUENTIAL DAMAGES RESULTING FROM BREACH OF ANY EXPRESS OR IMPLIED WARRANTY, INCLUDING DAMAGE TO PROPERTY AND, TO THE EXTENT PERMITTED BY LAW, DAMAGES FOR PERSONAL INJURY. THIS WARRANTY IS IN LIEU OF ALL OTHER WARRANTIES INCLUDING IMPLIED WARRANTIES OF MERCHANTABILITY AND FITNESS FOR A PARTICULAR PURPOSE.

Some states do not allow limitation of implied warranties, or the exclusion or limitation of incidental or consequential damages, so that the above limitations or exclusions may not apply to you. This warranty gives you specific legal rights and you may also have other rights which vary from state to state.

This product may contain fully tested, recycled parts, warranted as if new.

For warranty information, phone (510) 744-2700.

## Limited Software Warranty

**LIMITED WARRANTY.** SOCKET warrants that the original disk or CD ROM is free from defects for 90 days from the date of delivery of the SOFTWARE.

**CUSTOMER REMEDIES.** SOCKET'S entire liability and your exclusive remedy shall be, at SOCKET'S option, either (a) return of the price paid or (b) replacement of the SOFTWARE which does not meet SOCKET'S Limited Warranty and which is returned to SOCKET with a copy of your receipt. Any replacement SOFTWARE will be warranted for the remainder of the original warranty period or 30 days, whichever is longer. THESE REMEDIES ARE NOT AVAILABLE OUTSIDE OF THE UNITED STATES OF AMERICA.

**NO OTHER WARRANTIES.** SOCKET disclaims all other warranties, either express or implied, including but not limited to implied warranties of merchantability and fitness for a particular purpose, with respect to the SOFTWARE and the accompanying written materials. This limited warranty gives you specific legal rights. You may have others which vary from state to state.

**NO LIABILITY FOR CONSEQUENTIAL DAMAGES.** In no event shall SOCKET or its suppliers be liable for any damages whatsoever (including, without limitation, damages for loss of business profits, business interruption, loss of business information, or other pecuniary loss) arising out of the use of or inability to use the SOFTWARE, even if SOCKET has been advised of the possibility of such damages. Because some states do not allow the exclusion or limitation of liability for consequential or incidental damages, the above limitation may not apply to you.

**EXPORT LAW ASSURANCES.** You may not use or otherwise export or reexport the SOFTWARE except as authorized by United States law and laws of the jurisdiction in which the SOFTWARE was obtained. In particular, but without limitation, none of the SOFTWARE may be used or otherwise exported or reexported (a) into (or to a national or resident of) a United States embargoed country or (b) to anyone on the U.S. Treasury Department's list of Specially Designated Nationals or the U.S. Department of Commerce's Table of Denial Orders. By using the SOFTWARE, you represent and warrant that you are not located in, under control of, or a national or resident of any such country or on any such list.

**GOVERNMENT END USERS.** If the SOFTWARE is supplied to the U. S. Government, the SOFTWARE is classified as "restricted computer software" as defined in clause 52.227-19 of the FAR. The U. S. Government's rights to the SOFTWARE are as provided in clause 52.227-19 of the FAR.

**CONTROLLING LAW AND SEVERABILITY.** This License shall be governed by the laws of the United States and the State of California. If for any reason a court of competent jurisdiction finds any provision, or portion thereof, to be unenforceable, the remainder of this License shall continue in full force and effect.

## Copyright Notice

Copyright © 2003-2004 Socket Communications, Inc. All rights reserved.

Socket, the Socket logo and Mobility Friendly are registered trademarks of Socket Communications, Inc. *Bluetooth* Card is a trademark of Socket Communications, Inc. *Bluetooth* and the *Bluetooth* logos are trademarks owned by *Bluetooth* SIG, Inc., U.S.A. and licensed to Socket Communications, Inc. All other brand and product names are trademarks of their respective holders.

The *Bluetooth* Card includes technology licensed under United States Patent Nos. 4,543,450, 4,603,320, 4,686,506, and 4,972,470.

Reproduction of the contents of this manual without the permission of Socket Communications is expressly prohibited. Please be aware that the products described in this manual may change without notice.

Feel free to contact SOCKET COMMUNICATIONS at:

**Socket Communications, Inc.**  
37400 Central Court  
Newark, CA 94560

Phone: (510) 744-2700  
Fax: (510) 744-2727

Other than the above, Socket Communications can assume no responsibility for anything resulting from the application of information contained in this manual.

Socket Communications requests that you refrain from any applications of the Socket *Bluetooth* Card that are not described in this manual. Socket Communications also requests that you refrain from disassembling the *Bluetooth* Card. Disassembly of this device will void the product warranty.

You can track new product releases, software updates and technical bulletins by visiting Socket's web page at: [www.socketcom.com](http://www.socketcom.com).

## Regulatory Compliance

### CompactFlash Card

The Socket *Bluetooth* Card is designed to be compliant with the rules and regulations in locations where they are sold and will be labeled as required. This product is type approved — users are not required to obtain license or authorization before using.

#### **Radio Frequency Interference Requirements**

This device complies with part 15 of the FCC rules and Industry Canada RSS 210. Operation is subject to the following conditions: (1) This device may not cause harmful interference, and (2) this device must accept any interference received, including interference that may cause undesired operation.

This equipment is also ETS EN300 328-2, ETS EN301 489-1 and ETS EN301 489-17 compliant. These limits are designed to provide reasonable protection against harmful interference when the equipment is operated in a commercial environment.

This equipment generates, uses, and can radiate radio frequency energy and, if not installed and used in accordance with the instruction manual, may cause harmful interference to radio communications. Operation of this equipment in a residential area is likely to cause harmful interference, in which case the user will be required to correct the interference at his or her own expense.

This equipment generates and radiates radio-frequency energy. To comply with FCC RF exposure compliance requirements, the following antenna installation and device operating configurations must be satisfied: (1) Users are not permitted to make changes or modify the system in any way, and (2) connecting external antennas to the card is prohibited. This device and its antenna must not be co-located or operated with any other antenna or transmitter.

To comply with Industry Canada RF exposure compliance requirements, the following antenna installation and device operating configurations must be satisfied: “The installer of this radio equipment must ensure that the antenna is located or pointed such that it does not emit RF field in excess of Health Canada limits for the general population; consult Safety Code 6, obtainable from Health Canada’s website [www.hc-sc.gc.ca/ehp/ehd/catalogue/rpb.htm](http://www.hc-sc.gc.ca/ehp/ehd/catalogue/rpb.htm)”

If this equipment does cause harmful interference to radio or television reception, which can be determined by turning the equipment off and on,

the user may try to correct the interference by one or more of the following measures:

- Reorient or relocate the receiving antenna of the radio or television.
- Increase the distance separating the equipment and the receiver.
- Connect the equipment to an outlet on a different branch circuit than that of the receiver.
- Consult the dealer or an experienced radio/TV technician for help.

The user may find the following booklet helpful: *How to Identify and Resolve Radio-TV Interference Problems*. This booklet is available from the U.S. Government Printing Office, Washington, D.C. 20402.

### **Canada Certification**

The marking of “IC:xxxxxx-yyyyy” on the *Bluetooth* card means: “xxxxxx-yyyyy” is the certification number, and the term “IC” before the equipment certification number only signifies that Industry Canada technical specifications were met.

### **Radio Frequency Interference Requirements – Canada**

This Class B digital apparatus meets the requirements of the Canadian Interference-Causing Equipment Regulations. Cet appareil numérique de la Classe B respecte toutes les exigences du Règlement sur le Matériel Brouilleur du Canada.

NOTE: To comply with FCC and Industry Canada exposure requirements, this device is approved for operations in a user’s hand when there is a distance of 20 cm or more between the device antenna and the user’s body.

### **CE Marking & European Union Compliance**

Products intended for sale within the European Union are marked with a CEMark which indicates compliance to applicable Directives and European Normes (EN), as follows. Amendments to these Directives or ENs are included: Normes (EN), as follows:

#### **Applicable Directives:**

- Radio and Telecommunications Terminal Equipment Directive 1999/5/EC
- Low Voltage Directive 73/23/EEC

**Applicable Standards:**

- EN 55 022 – Limits and Methods of Measurement of Radio Interference Characteristics of Information Technology Equipment.
- EN 50 082-1 – Electromagnetic Compatibility – General Immunity Standard, Part 1: Residential, Commercial, Light Industry.
- IEC 801.2 – Electromagnetic Compatibility for Industrial Process Measurement and Control Equipment, Part 2: Electrostatic Discharge Requirements.
- IEC 801.3 – Electromagnetic Compatibility for Industrial Process Measurement and Control Equipment, Part 3: Radiated Electromagnetic Field Requirements.
- IEC 801.4 - Electromagnetic Compatibility for Industrial Process Measurement and Control Equipment, Part 4: Electrical Fast Transients Requirements.
- EN 60 950 + Amd 1 + Amd 2 – Safety of Information Technology Equipment Including Business Equipment.

## SDIO Card

The Socket *Bluetooth* Card is designed to be compliant with the rules and regulations in locations where they are sold and will be labeled as required. This product is type approved — users are not required to obtain license or authorization before using.

This product has been certified as conforming to technological standards. Therefore, the following actions are punishable by law:

- Disassembly or modification of this product.
- Removal of identification labels on the back of this product.

The frequency used by this product is also used by industry, scientific and medical devices, such as microwave ovens, as well as wireless detectors for motion detectors, such as those requiring licenses used on manufacturing lines or similar radio transmitters. (all these wireless devices will be called “other wireless transmitters” below).

1. Before using this system, confirm that other wireless transmitters are not in use nearby.
2. In the unlikely event that there is electronic interference between this system and other wireless transmitters, quickly change the operating frequency of this system, change the location of operation, or stop operating the unit (cease signal transmission).
3. If other electrical interference or related problems should occur, contact Socket technical support at +1-510-744-2720.

### **Radio Frequency Interference Requirements (FCC)**

This device complies with part 15 of the FCC rules. Operation is subject to the following two conditions: (1) this device may not cause harmful interference, and (2) this device must accept any interference received, including interference that may cause undesired operation.

**CAUTION:** Change or modification not expressly approved by the party responsible for compliance could void the user’s authority to operate this equipment.

#### **Radio Frequency Exposure Compliance:**

In order for this device to comply with FCC rules, under the provision of Part 15.247(b)(c), it must operate in a manner that ensures that the public is not exposed to radio frequency energy levels in excess of the Maximum Permissible Exposure (MPE) limits.

It is recommended that the antenna of this device be placed at least 20 cm or more from its user and any nearby persons, during continuous and extended data transmission. The users of this device should ensure that the operation of this device is in compliance with these provisions.

**Radio Frequency Interference Requirements (Industry Canada)**

To prevent radio interference to the licensed service, this device is intended to be operated indoors and away from windows to provide maximum shielding. Equipment that is installed outdoors is subject to licensing.

This equipment generates, uses, and can radiate radio frequency energy and, if not installed and used in accordance with the instruction manual, may cause harmful interference to radio communications. Operation of this equipment in a residential area is likely to cause harmful interference, in which case the user will be required to correct the interference at his or her own expense.

**Europe R&TTE Directive**

This equipment complies with the R&TTE directive 1999/5/EC and has been provided with the CE mark accordingly.

Note that the radio frequency band used by this equipment has not been harmonized in all the EU.

Applicable area (nation):

Austria, Belgium, Denmark, Finland, France, Germany, Greece, Iceland, Ireland, Italy, Luxembourg, Norway, Portugal, Spain, Sweden, Switzerland, The Netherlands, United Kingdom



Printed in U.S.A.