

MANUFACTURING

NUMBERS:

9210700  
9210702  
9210704  
9210706  
9210708  
9210710  
9210712  
9210714  
9210716  
9210720  
9210722



Antunes Foodservice Equipment  
DIVISION OF A.J. ANTUNES & CO.

A BRAND OF A.J. ANTUNES & CO.  
**roundup**  
ANTUNES FOODSERVICE EQUIPMENT®

# **VERTICAL CONTACT TOASTER**

**Models VCT-1000**



P/N 1010807 Rev. E 06/06



# **Owner's Manual**

## TABLE OF CONTENTS

<b>Owner information</b> .....	<b>2</b>	<b>Maintenance</b> .....	<b>11</b>
General.....	2	Daily.....	11
Warranty Information .....	2	Replacing the Release Sheet (Every 4 - 6 weeks) .....	12
Service/Technical Assistance .....	3	Replacing Optional Belt Wraps and Measuring the	
<b>Important Safety Information</b> .....	<b>4</b>	Conveyor Belt Chains and Optional Roller Tensioners	
<b>Specifications</b> .....	<b>5</b>	(Every 3 - 6 months).....	12
Electrical Ratings.....	5	Conveyor Belt Chains.....	13
Electrical Cord & Plug Configurations .....	5	Adjusting conveyor Belt Chains.....	13
Model Designation.....	5	Replacing the Optional Roller Tensioners .....	14
Dimensions.....	6	Replacing the Spring Tensioners.....	14
<b>Installation</b> .....	<b>7</b>	Measuring the Optional Roller Tensioners .....	14
Unpacking.....	7	<b>Troubleshooting</b> .....	<b>15</b>
Assembling the Unit .....	7	<b>Wiring Diagram</b> .....	<b>17</b>
Installing the Optional Belt Wraps and Roller		<b>Replacement Parts</b> .....	<b>18</b>
Tensioners .....	8	<b>Optional Parts – VCT-1000</b> .....	<b>23</b>
Equipment Setup .....	9	<b>LIMITED WARRANTY</b> .....	<b>24</b>
<b>Operation</b> .....	<b>10</b>		
Operating Instructions .....	10		
Safety Features .....	10		

## OWNER INFORMATION

### General

The Vertical Contact Toaster, Model VCT-1000, is designed for contact toasting of buns. The toaster design allows the operator to place buns on both sides of the heated Platen at the same time. Buns are placed into the top of the toaster and uniform, golden brown, warm buns are then retrieved at the bottom of the toaster in approximately 10 seconds.

This manual provides the safety, installation and operating procedures for the Vertical Contact Toaster. We recommend that all information contained in this manual be read prior to installing and operating the unit.

Your Vertical Contact Toaster is manufactured from the finest materials available and is assembled to Roundup's strict quality standards. This unit has been tested at the factory to ensure dependable trouble-free operation.

### Warranty Information

Please read the full text of the Limited Warranty in this manual.

If the unit arrives damaged, contact the carrier immediately and file a damage claim with them. Save all packing materials when filing a claim. Freight damage claims are the responsibility of the purchaser and are not covered under warranty.

The warranty does not extend to:

- Damages caused in shipment or damage as result of improper use.
- Installation of electrical service.
- Normal maintenance as outlined in this manual.
- Malfunction resulting from improper maintenance.
- Damage caused by abuse or careless handling.
- Damage from moisture into electrical components
- Damage from tampering with, removal of, or changing any preset control or safety device.

**IMPORTANT! Keep these instructions for future reference. If the unit changes ownership, be sure this manual accompanies the equipment.**

**OWNER INFORMATION (continued)****Service/Technical Assistance**

If you experience any problems with the installation or operation of your unit, contact your local Roundup Authorized Service Agency.

Fill in the information below and have it handy when calling your authorized service agency for assistance. The serial number is on the specification plate located on the rear of the unit.

Purchased From: \_\_\_\_\_

Date of Purchase: \_\_\_\_\_

Model No.: \_\_\_\_\_

Serial No.: \_\_\_\_\_

Mfg. No.: \_\_\_\_\_

Refer to the service agency directory included with your unit.

Authorized Service Agency

Name: \_\_\_\_\_

Phone No.: \_\_\_\_\_

Address: \_\_\_\_\_

Use only genuine Roundup replacement parts in this unit. Use of replacement parts other than those supplied by the manufacturer will void the warranty. Your Authorized Service Agency has been factory trained and has a complete supply of parts for this toaster.

You may also contact the factory at 1-877-392-7854 if you have trouble locating your local authorized service agency.

A.J. Antunes & Co. reserves the right to change specifications and product design without notice. Such revisions do not entitle the buyer to corresponding changes, improvements, additions or replacements for previously purchased equipment.

## IMPORTANT SAFETY INFORMATION

Throughout this manual, you will find the following safety words and symbols that signify important safety issues with regards to operating or maintaining the equipment.

### **WARNING**

**GENERAL WARNING.** Indicates information important to the proper operation of the equipment. Failure to observe may result in damage to the equipment and/or severe bodily injury or death.

### **WARNING**

**ELECTRICAL WARNING.** Indicates information relating to possible shock hazard. Failure to observe may result in damage to the equipment and/or severe bodily injury or death.

### **CAUTION**

**GENERAL CAUTION.** Indicates information important to the proper operation of the equipment. Failure to observe may result in damage to the equipment.

### **WARNING**

**HOT SURFACE WARNING.** Indicates information important to the handling of equipment and parts. Failure to observe caution could result in personal injury.

In addition to the warnings and cautions in this manual, use the following guidelines for safe operation of the unit.

- Read all instructions before using equipment.
- For your safety, the equipment is furnished with a properly grounded cord connector. Do not attempt to defeat the grounded connector.
- Install or locate the equipment only for its intended use as described in this manual. Do not use corrosive chemicals in this equipment.
- Do not operate this equipment if it has a damaged cord or plug, if it is not working properly, or if it has been damaged or dropped.
- This equipment should be serviced by qualified personnel only. Contact the nearest Roundup authorized service facility for adjustment or repair.
- Do not block or cover any openings on the unit.
- Do not immerse cord or plug in water.
- Keep cord away from heated surfaces.
- Do not allow cord to hang over edge of table or counter.

The following warnings and cautions appear throughout this manual and should be carefully observed.

- Turn the unit off, disconnect the power source and allow unit to cool down before performing any service or maintenance on the unit.
- The procedures in this chapter may include the use of chemical products. These chemical products will be highlighted with bold face letters followed by the abbreviated HCS (Hazard Communication Standard). See Hazard Communication Standard manual for the appropriate Material Safety Data Sheets (MSDS).
- The toaster should be grounded according to local electrical codes to prevent the possibility of electrical shock. It requires a grounded receptacle with separate electrical lines, protected by fuses or circuit breaker of the proper rating.
- Bread may burn. Therefore toasters must not be used near or below curtains or other combustible walls and materials. Failure to maintain safe operating distances may cause discoloration or combustion.
- Failure to use Release Sheets may result in damage to the equipment and loss of warranty coverage.
- All electrical connections must be in accordance with local electrical codes and any other applicable codes.

### IMPORTANT SAFETY INFORMATION (continued)

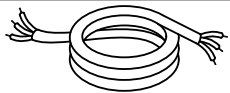
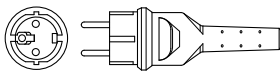
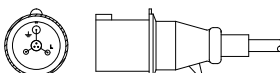

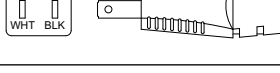
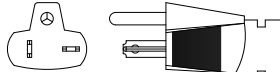
- WARNING ELECTRICAL SHOCK HAZARD. FAILURE TO FOLLOW THESE INSTRUCTIONS COULD RESULT IN SERIOUS INJURY OR DEATH.
  - Electrical ground is required on this appliance.
  - Do not modify the power supply cord plug. If it does not fit the outlet, have a proper outlet installed by a qualified electrician.
- Do not use an extension cord with this appliance.
- Check with a qualified electrician if you are in doubt as to whether the appliance is properly grounded.
- If Power Cord is damaged, it must be replaced by a Power Cord available from the manufacturer or an Authorized Service Agency

### SPECIFICATIONS

#### Electrical Ratings

Model/Mfg. #	Volts	Watts	Amp.	Hertz
VCT-1000CF 9210700, 706, & 9210716, 722	120	1800	15.0	60
VCT-1000CV 9210702, 708, 714, & 720	208/240	2600/ 3455	12.5/ 14.4	60
VCT-1000HI 9210704 & 710	208/240	2600/ 3455	12.5/ 14.4	50
VCT-1000HC 9210712	220/240	1775/ 2125	8.07/ 8.85	50

#### Electrical Cord & Plug Configurations

Letter Code*	Description	Configuration
H	Harmonized Cord	
C	Commercial Cord	
(H)C**	CEE 7/7, 16 Amp., 250 VAC (Assembly Only).	
(H)I	IEC-309, 16 Amp., 250 VAC., Pin & Sleeve (Assembly Only).	
(C)F***	5-15P, 15 Amp., 120 VAC., Non – Locking (Assembly Only).	
(C)V	6-20P, 20 Amp., 250 VAC., Non – Locking (Assembly Only).	

\* Used in Model Designation

\*\* Indicates that the plug comes with a Commercial Cord.

\*\*\* Indicates that the plug comes with a Harmonized Cord.

#### CAUTION

All electrical connections must be in accordance with local electrical codes and any other applicable codes.

#### WARNING

ELECTRICAL SHOCK HAZARD. FAILURE TO FOLLOW THE INSTRUCTIONS IN THIS MANUAL COULD RESULT IN SERIOUS INJURY OR DEATH.

- Electrical ground is required on this appliance.
- Do not modify the power supply cord plug. If it does not fit the outlet, have a proper outlet installed by a qualified electrician.
- Do not use an extension cord with this appliance.
- Check with a qualified electrician if you are in doubt as to whether the appliance is properly grounded.

#### Model Designation

##### VCT-1000XX

##### TYPE OF POWER CORD

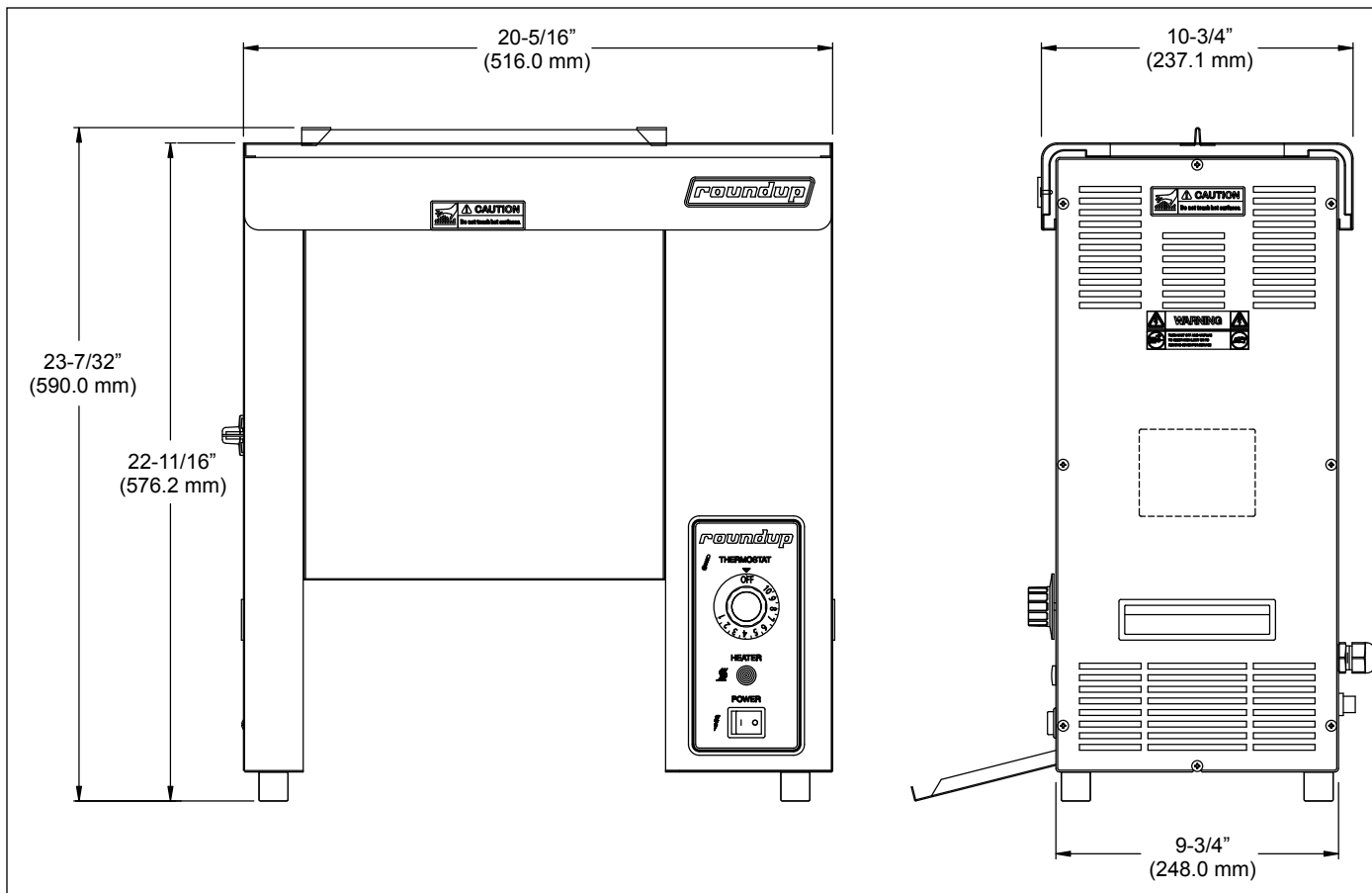
H = HARMONIZED  
C = COMMERCIAL

##### TYPE OF PLUG

C = CEE 7/7 Schuko  
I = IEC-309  
F = NEMA 5-15P  
V = NEMA 6-20P

## SPECIFICATIONS (continued)

### Dimensions



## INSTALLATION

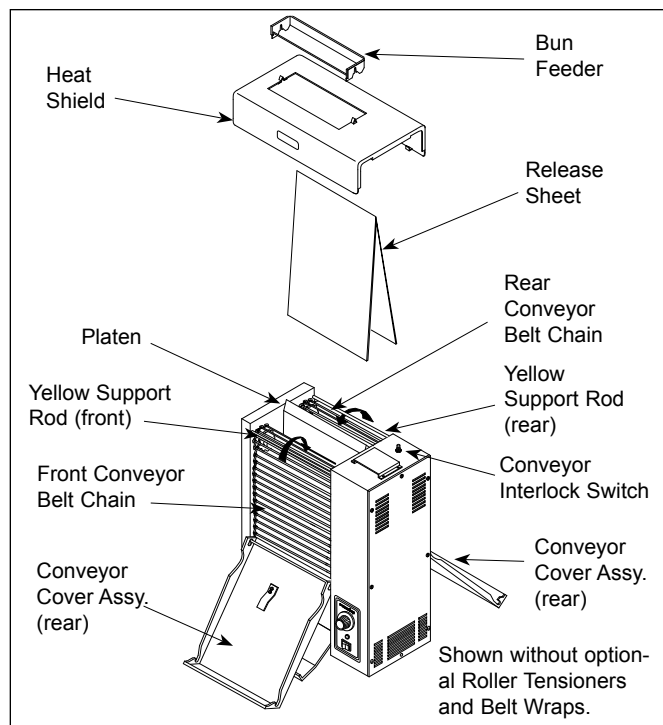
## Unpacking

1. Remove unit and all packing materials from shipping carton.
2. Open the large box. It should contain:
  - Bun Feeder (Figure 1).
  - Bun Chute (Figure 2)
  - 2 Release Sheets (Figure 1).
  - Authorized Service Agency Directory
  - Owner's Manual
3. Remove all packing materials and protective coverings from the unit and parts.

**NOTE: If any parts are missing or damaged, contact Antunes Technical Service IMMEDIATELY at 1-877-392-7854.**

## Assembling the Unit

**NOTE: The factory has pre-installed a Release Sheet over the Platen (Figure 1). Verify that it is properly in place before proceeding.**



### Figure 1. Toaster and Accessories

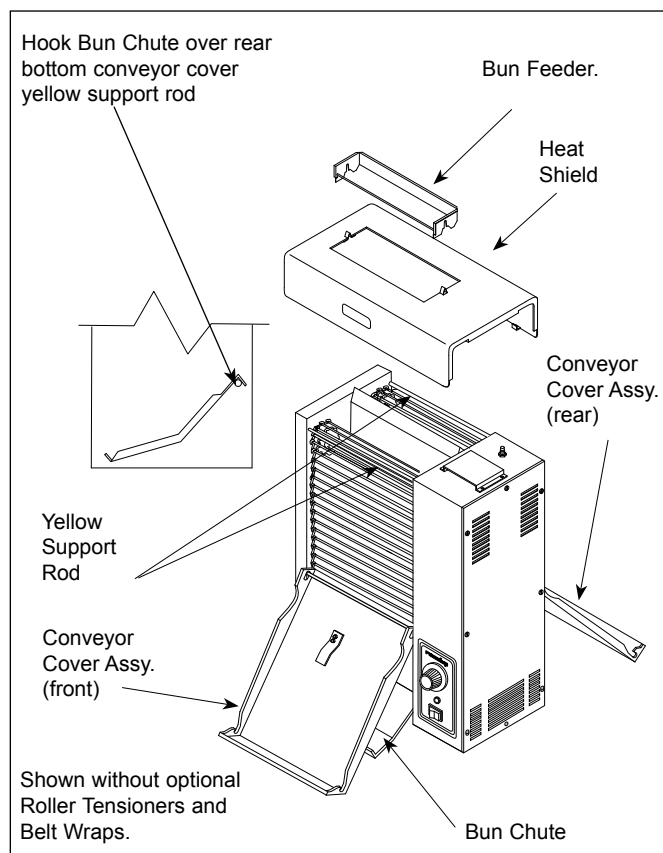
**⚠ CAUTION ⚠**

Failure to use Release Sheets may result in damage to the unit and loss of warranty coverage.

1. Install the Bun Feeder (Figure 1) and Bun Chute (Figure 2).

**IMPORTANT: Make sure Heat Shield Assembly is properly seated and engages the Conveyor Interlock Safety Switch (see Figure 1). The conveyors will not rotate unless the Heat Shield is in place and correctly engages the Conveyor Interlock Safety Switch.**

**NOTE: Check the Release Sheet to make sure it is not caught in the conveyor. Additional Release Sheets can be obtained through your authorized service agency under part no. 7000249 (3 pack) or 7000250 (10 pack).**



### Figure 2. Installing Bun Chute

## INSTALLATION (continued)

### Installing the Optional Belt Wraps and Roller Tensioners

**NOTE:** Beltwraps and Roller Tensioners are REQUIRED on models with manufacturing number 9210716 and 9210722.

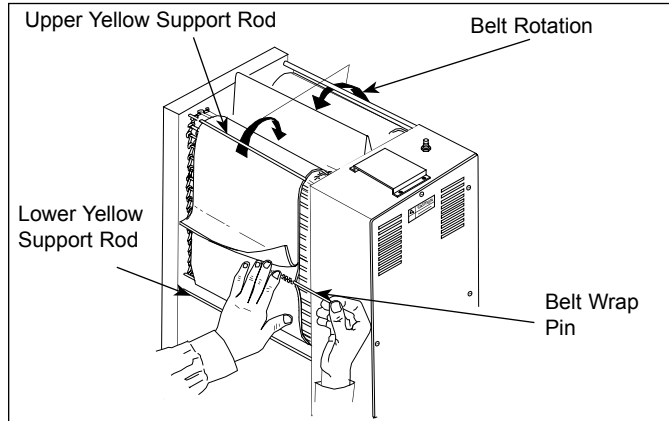
#### INSTALLING BELT WRAPS

**NOTE:** Depending on toaster usage and how well they are cleaned daily, the Belt Wraps should last between 3 - 6 months. Additional Belt Wraps may be purchased from your Authorized Service Agency.

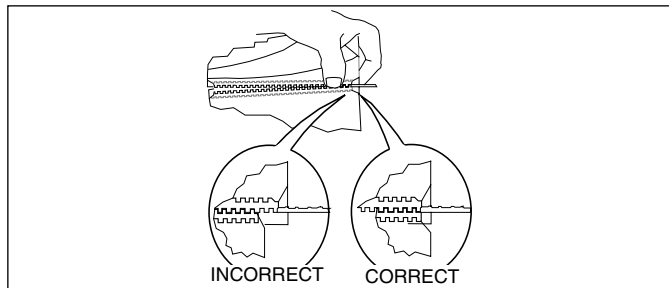
1. Ensure that the Rocker Switch (power On/Off) is set to OFF, the power cord is unplugged, and the unit is cool before proceeding.
2. Remove the Bun Feeder and Heat Shield and set the Bun Thickness Compression Knobs to 6 and 6 (Figure 7).
3. Open both Conveyor Covers and install the Belt Wraps around the Conveyor Belt Chains inside the yellow rods with the "zipper" flap exposed and hanging down (Figures 3 & 4).
4. Close the Conveyor Cover(s), set the Compression Control Knobs back to their normal settings and reinstall the Heat Shield and Bun Feeder.

#### INSTALLING OPTIONAL ROLLER TENSIONERS

1. Install the Tensioner Assembly and reassemble the unit (Figure 5).
2. Make sure the spacers are placed inside the Tensioner arm. The spacers are smaller than the holes to allow the Tensioner to pivot freely.



**Figure 3. Installing Optional Belt Wraps**



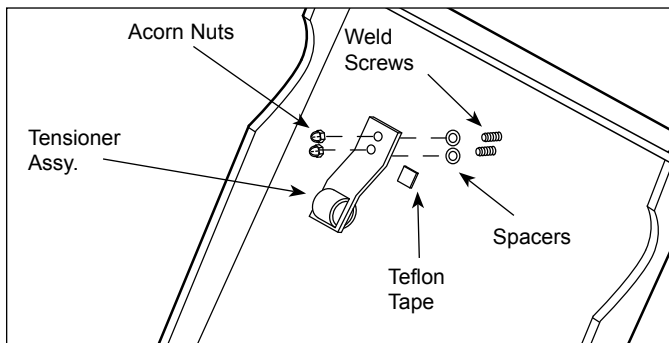
**Figure 4. Aligning Belt Teeth**

#### ⚠ CAUTION ⚠

Align the ends of the Belt Wrap properly (Figure 13) or the Belt Wrap may be damaged.

#### ⚠ CAUTION ⚠

Position the Belt Wrap **UNDER** the upper and lower yellow support rods or damage to the unit may occur.



**Figure 5 Installing Optional Roller Tensioner Assembly**



**INSTALLATION (continued)****Equipment Setup**

When placing the toaster into service, pay attention to the following guidelines.

- Make sure power to the unit is off and the toaster is at room temperature.
- Do not block or cover any openings on the unit.
- Do not immerse cord or plug in water.
- Keep cord away from heated surfaces.
- Do not allow cord to hang over edge of table or counter.
- Connect the unit to the power supply. Refer to the specification plate for the proper voltage.

**⚠ WARNING ⚠**

ELECTRICAL SHOCK HAZARD. FAILURE TO FOLLOW THE INSTRUCTIONS IN THIS MANUAL COULD RESULT IN SERIOUS INJURY OR DEATH.

- Electrical ground is required on this appliance.
- Do not modify the power supply cord plug. If it does not fit the outlet, have a proper outlet installed by a qualified electrician.
- Do not use an extension cord with this appliance.
- The toaster should be grounded according to local electrical codes to prevent the possibility of electrical shock. It requires a grounded receptacle with separate electrical lines, protected by fuses or circuit breaker of the proper rating.
- Check with a qualified electrician if you are in doubt as to whether the appliance is properly grounded.

**⚠ CAUTION ⚠**

All electrical connections must be in accordance with local electrical codes and any other applicable codes.

**⚠ CAUTION ⚠**

Bread may burn. Therefore toasters must not be used near or below curtains or other combustible walls and materials. Failure to maintain safe operating distances may cause discoloration or combustion.

## OPERATION

### Operating Instructions

1. Set the Bun Thickness Compression Knobs (Figure 7) to the desired settings.

**NOTE:** After initial run of 4-6 buns, adjust controls according to the desired finished product.

2. Turn the Rocker Switch (power On/Off) to on (Figure 6).
3. Turn the temperature control to 10. Allow 30 minutes warm-up time before proceeding.
4. Drop buns into toaster (Figure 6). Cut sides of heel and crown must face each other.
5. Toasted product will drop into the bun landing area (Figure 6).
6. Test at least 4 buns before putting toaster into service. Turn temperature control to lower setting for lighter toasting or to higher setting for darker toasting.
7. Turn the Rocker Switch (power On/Off) to off when finished toasting and follow the daily cleaning procedures.

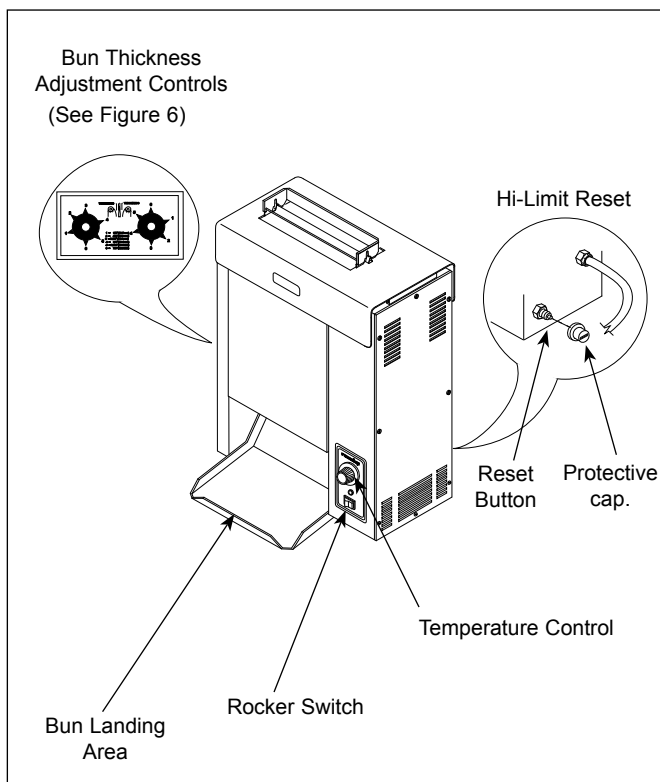


Figure 6. Toaster Controls

### Safety Features

#### HI-LIMIT RESET BUTTON

A Hi-Limit Control turns off electrical power to the heater if the unit overheats. To reset this control, allow sufficient time (10-15 minutes) for the unit to cool down, Remove the protective cap, and fully depress the reset button located at the rear of the unit (Figure 6).

If the unit requires continuous resetting, contact your Authorized Service Agency.

#### CONVEYOR INTERLOCK SAFETY SWITCH

A Conveyor Interlock Safety Switch is located on top of the unit under the Heat Shield (Figure 1). The Conveyor Belt Chains will not rotate unless the Heat Shield is in place and activating the Conveyor Interlock Safety Switch properly.

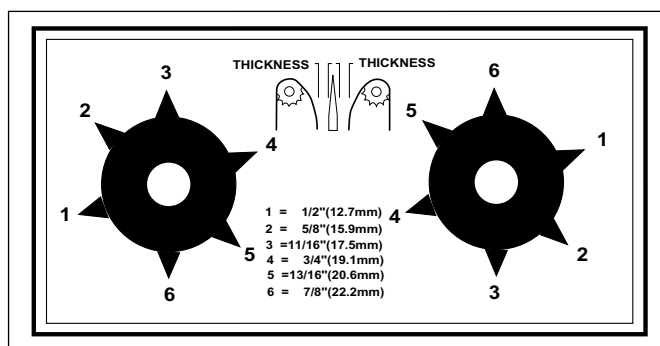


Figure 7. Bun Thickness Compression Knobs

### MAINTENANCE

#### ⚠ CAUTION ⚠

Turn the unit off, disconnect the power source and allow the unit to cool down 30 minutes before performing any service or maintenance on the unit.

#### ⚠ CAUTION ⚠

To prevent damage to the unit, do not use abrasive cleaners on the Release Sheet or belt wrap.

#### ⚠ CAUTION ⚠

Failure to use Release Sheets may result in damage to the unit and loss of warranty coverage.

### Daily

#### CLEANING THE RELEASE SHEET, THE OPTIONAL BELT WRAPS, CONVEYOR BELT CHAINS, AND TOASTER

##### Tools Required:

- Heat resistant gloves
  - Clean towels
  - Multipurpose Detergent Solution
  - Sanitizer Solution
1. Turn the Rocker Switch (power On/Off) to OFF, unplug the power cord, and allow the unit to cool for 30 minutes.
  2. Put on heat resistant gloves. Remove the Bun Feeder, Heat Shield, and Bun Chute (Figure 1). Wipe them with a damp sanitized towel and allow them to air dry.
  3. Remove the Release Sheet and place it on a clean, flat dry surface. Wipe the silver side with a **clean** towel dampened with **Multipurpose Detergent Solution** immediately followed by a second clean towel dampened with sanitizer and allow it to air dry before continuing. Repeat this step on the reverse side of the Release Sheet.
  4. Open the front Conveyor Cover and firmly wipe the Belt Wrap (if used) or Conveyor Belt Chain from left to right and top to bottom with a clean towel dampened with **Multipurpose Detergent Solution** immediately followed by a second clean towel dampened with sanitizer solution.

5. Close the front Conveyor Cover, open the rear Conveyor Cover, and clean the Belt Wrap (if used) or Conveyor Belt Chain as described in Step 4.
6. Close the rear Conveyor Cover, Reinstall the Heat Shield, plug in the power cord, turn the unit on, count 10 seconds, then turn the unit off and unplug the unit. **This will allow the uncleaned sections to be exposed.**
7. Open the rear Conveyor Cover again, clean the newly exposed section of the Belt Wrap (if used) or the Conveyor Belt Chain in the same manner as before. Close the Conveyor Cover.
8. Open the front Conveyor Cover again and clean the newly exposed section of the Belt Wrap (if used) or Conveyor Belt Chain in the same manner as before.
9. Close the front Conveyor Cover and wipe down the outside of the toaster with a clean, damp, sanitized towel.
10. Install the Release Sheet, using the reverse side, by draping it over both sides of the Platen with the crease centered on the Platen.

**NOTE: Rotate from side to side daily or weekly to prolong the life of the Release Sheet.**

11. Install the Bun Chute so the hooks are installed over the lower rear yellow Support Rod. Install the Heat Shield with the Release Sheet retainer clips securely over the Release Sheet and Platen.
12. Reinstall the Bun Feeder and plug in the unit.

**Important! Make sure the Heat Shield is activating the Conveyor Safety Interlock Switch. The Conveyors will not rotate unless the Heat Shield is in place and the Conveyor Safety Interlock Switch is activated.**

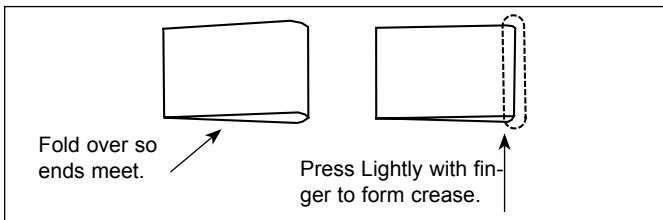
**Note: Check the Release Sheet to make sure it is not caught in the Conveyor. Additional release Sheets can be obtained through your Authorized Service Agency under P/N 7000249 (3 Pack) or 7000250 (10 Pack).**

## MAINTENANCE (continued)

### Replacing the Release Sheet (Every 4 - 6 weeks)

**NOTE:** Depending on toaster usage and on how well it is cleaned daily, the Release Sheet should last between 45 - 60 days.

1. Remove and discard the Release Sheet.
2. Lay a new Release Sheet on a clean, dry surface and fold it in half lengthwise and gently crease it at the fold using only your fingers.
3. Install the Release Sheet just as you would after daily cleaning (see diagram below).



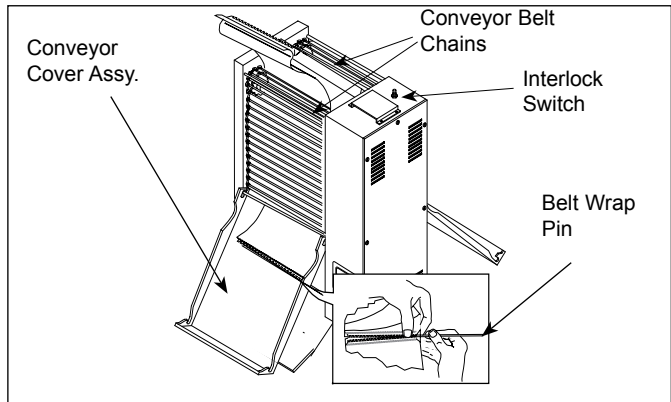
### Replacing Optional Belt Wraps and Measuring the Conveyor Belt Chains and Optional Roller Tensioners (Every 3 - 6 months)

#### REPLACING BELT WRAPS

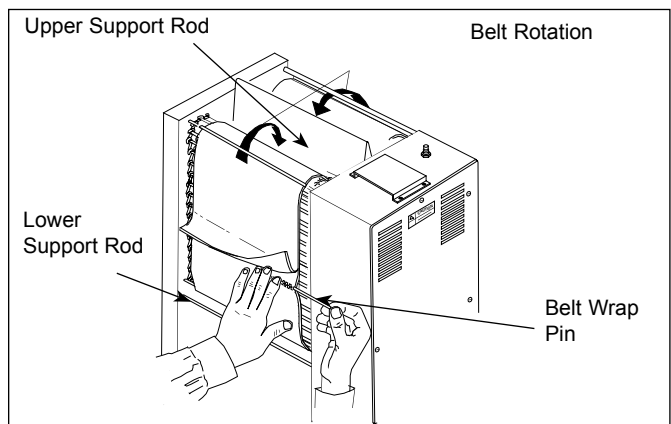
**NOTE:** Depending on toaster usage and how well they are cleaned daily, the Belt Wraps should last between 3 - 6 months. Additional Belt Wraps may be purchased from your Authorized Service Agency.

1. Turn unit off, unplug the power cord, and allow the unit to cool before proceeding.
2. Remove the Bun Feeder and Heat Shield and set the Bun Thickness Compression Knobs to 6 & 6.
3. Open both Conveyor Covers and pull the Belt Wrap Pin out of the “zipper” (Figure 8).
4. Remove and discard the old Belt Wrap(s).
5. Clean both Conveyor Belt Chains just as you would clean the Belt Wraps during daily cleaning (Figure 8).
6. Install the new Belt Wrap(s) around the Conveyor Belt Chains inside the yellow rods with the “zipper” flap exposed and hanging down (Figures 9 & 10).

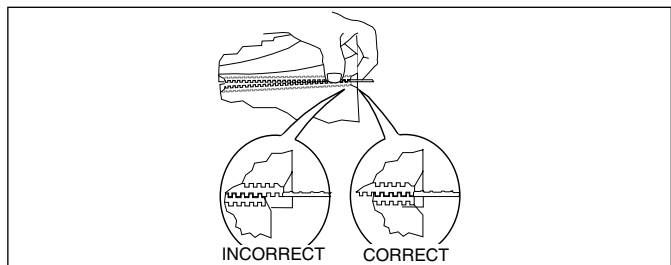
7. Close the Conveyor Cover(s), set the Bun Thickness Compression Knobs back to their normal settings and reinstall the Heat Shield and Bun Feeder.



**Figure 8. Removing Optional Belt Wrap**



**Figure 9. Installing Belt Wrap**



**Figure 10. Aligning Belt Teeth**

#### ⚠ CAUTION ⚠

Align the ends of the Belt Wrap properly (Figure 13) or the Belt Wrap may be damaged.

#### ⚠ CAUTION ⚠

Position the Belt Wrap UNDER the upper and lower yellow support rods or damage to the unit may occur.

**NOTE:** The Bun Thickness Compression Knobs (Figure 7) must be set to “6 & 6” prior to measuring or removing or reinstalling the Conveyor Belt Chains.

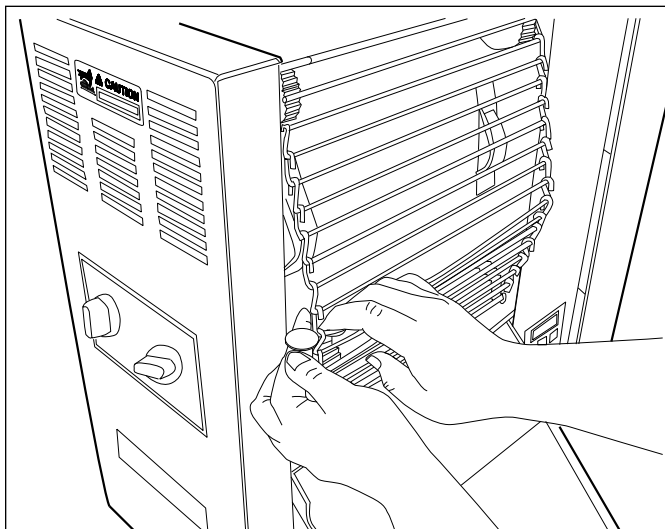
### Conveyor Belt Chains

#### ⚠ WARNING ⚠

Turn the unit off, disconnect the power source and allow the unit to cool down before performing any service or maintenance on the unit.

### MEASURING CONVEYOR BELT CHAINS

Facing the toaster, locate the approximate center-point of the Conveyor Chain. Pull the Conveyor chain away from the edge of the toaster. Stand a U.S. Dime, 11/16” (1.8 cm) coin on end between the frame and the chain. If the gap is significantly wider than the coin, REMOVE links as described below. Then, measure the gap again to make sure it is not too tight. Check the opposite side of the toaster using the same measurements.



### ADJUSTING CONVEYOR BELT CHAINS

After a period of time, the Conveyor Chain links will wear and the Conveyor Belt chain will stretch, eventually skipping on the lower sprockets. This is easily remedied by removing one or more conveyor links from each side of the belt. There are two 1/2” small links on each side of the conveyor belt. The rest of the links are large, 3/4” long (Figure 11).

### REMOVE CONVEYOR BELT CHAINS

1. If required, perform steps 1 - 4 under **Replacing Belt Wraps** on the previous page.
2. Disconnect the Conveyor Belt Chain by squeezing any two links together and unhooking both ends of one link (Figure 11). Needle-nose pliers may be used.
3. To shorten a stretched Conveyor Belt Chain, remove one 1/2” link from the belt.
4. Reassemble the Conveyor Belt Chain onto the sprockets as described below in Replacing Conveyor Belt Chains.

**NOTE:** If the belt is too short to be reassembled, remove an additional 1/2” small link and install a 3/4” large link. This will shorten the belt 1/4” overall.

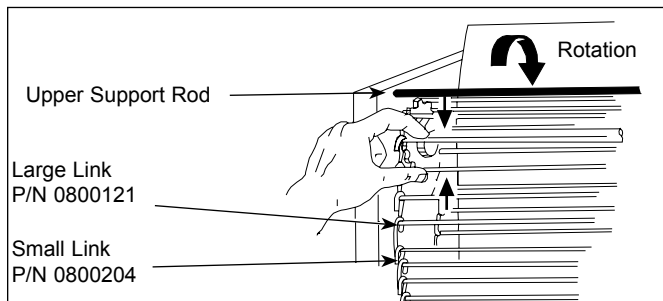
### REPLACING CONVEYOR BELT CHAINS

1. Remove the old Conveyor Belt Chain as described above.
2. Place the replacement Conveyor Belt Chain on the top sprockets with hook ends down. Check for correct positioning (Figure 11).

**NOTE:** The ends of the hooks must point down. (Figure 11).

3. Wrap the Conveyor Belt Chain around the top and lower sprockets and connect by hooking both ends together.

**NOTE:** Make sure the Conveyor Belt Chain is installed under the upper support rod and over the lower support rod.

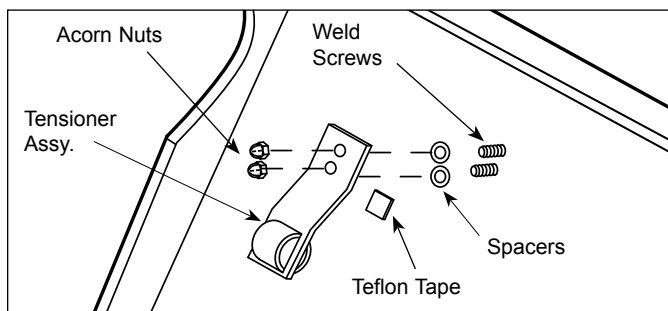


**Figure 11. Removing Conveyor Belt Chain**

## MAINTENANCE (continued)

### Replacing the Optional Roller Tensioners

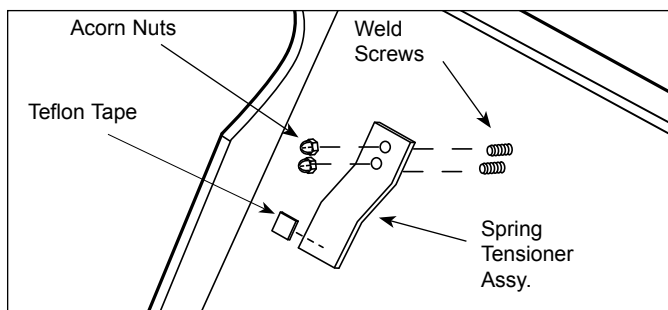
1. Remove the acorn nuts and old roller Tensioner Assembly (Figure 12).
2. Replace Tensioner Assembly, and reassemble.
3. Make sure the spacers are placed inside the Tensioner arm. The spacers are smaller than the holes to allow the Tensioner to pivot freely.



**Figure 12. Replacing Roller Tensioner Assy.**

### Replacing the Spring Tensioners

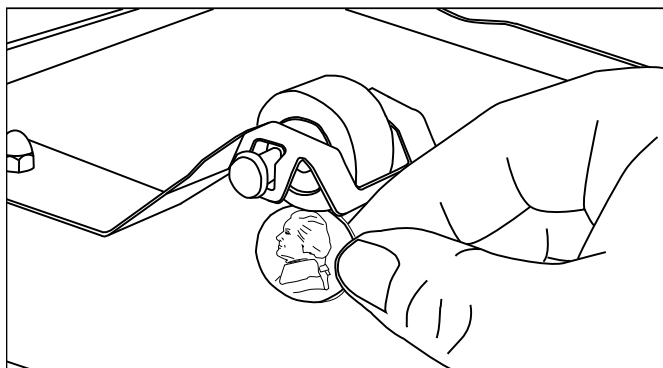
1. Remove the acorn nuts (Figure 13).
2. Remove old Spring Tensioner Assembly.
3. Replace Tensioner Assembly and reassemble unit.



**Figure 13. Replacing Spring Tensioner Assy.**

### Measuring the Optional Roller Tensioners

1. Measure the Roller Tensioner on both inner Conveyor Covers (Figure 14)). Adjust or replace any damaged ones as recommended. The space between the inner Conveyor Cover and bottom of the Tensioner wheel should be  $13/16"$  (2.1 cm) or the height of a U.S. Nickel.



**Figure 14. Measuring Roller Tensioner**

**TROUBLESHOOTING**
**⚠ WARNING ⚠**

To avoid possible personal injury and/or damage to the unit, inspection, test and repair of electrical equipment should be performed by qualified service personnel. The unit should be unplugged when servicing, except when electrical tests are required. Use extreme care during electrical circuit tests. Live circuits will be exposed.

<b>Problem</b>	<b>Possible Cause</b>	<b>Corrective Action</b>
No heat and conveyor belts do not move.	Toaster is installed incorrectly.	Perform the installation and operating procedures found in the Installation and Operation sections of this manual.
	Inoperable power cord or Rocker Switch.	Check receptacle for correct voltage (see the Specifications section of this manual).  If necessary, contact your maintenance person or Authorized Service Agency for service.
	Hi-Limit Control is tripped.	Reset the Hi-Limit Control (see Figure 6 in the Operations section of this manual).
	Wiring Problem.	Contact your maintenance person or Authorized Service Agency for service.
No heat but Conveyor Belt Chains move.	Wiring Problem.	Contact your maintenance person or Authorized Service Agency for service.
	Inoperative Platen.	
	Inoperable Thermostat	
Platen is hot but Conveyor Belt Chains do not rotate.	Heat Shield not installed.	Install Heat Shield (Figure 2)..
	Conveyor Safety Interlock switch not activated by the heat shield..	Re-install the Heat Shield correctly so that the Heat Shield applies appropriate pressure on the Conveyor Safety Interlock switch.
	Spring Tensioner Assembly or Roller Tensioner is damaged or missing.	Replace Spring Tensioner or Roller Tensioners if damaged or missing.
	Conveyor Belt Chain links too loose.	Adjust Conveyor Belt Chain length as described in the Maintenance section of this manual.
	Inoperable Drive Motor.	Contact your maintenance person or Authorized Service Agency.
	Loose Drive Motor Sprocket Setscrew.	
	Drive Motor Chain has fallen off sprocket(s).	
Conveyor Belts Chains hesitate to rotate and/or "skip" on sprockets.	Inoperable Safety Interlock Switch.	
	Conveyor Belt Chains installed incorrectly.	Install Conveyor Belt Chains to match Figure 11. Be sure that the ends of the hooks are facing down.
	Conveyor Belt Chains too loose.	Adjust Conveyor Belt Chain length as described in the Maintenance section of this manual.
	Spring Tensioner Assembly or Roller Tensioner is damaged or missing.	Replace Spring Tensioner Assembly or Roller Tensioners if damaged or missing.

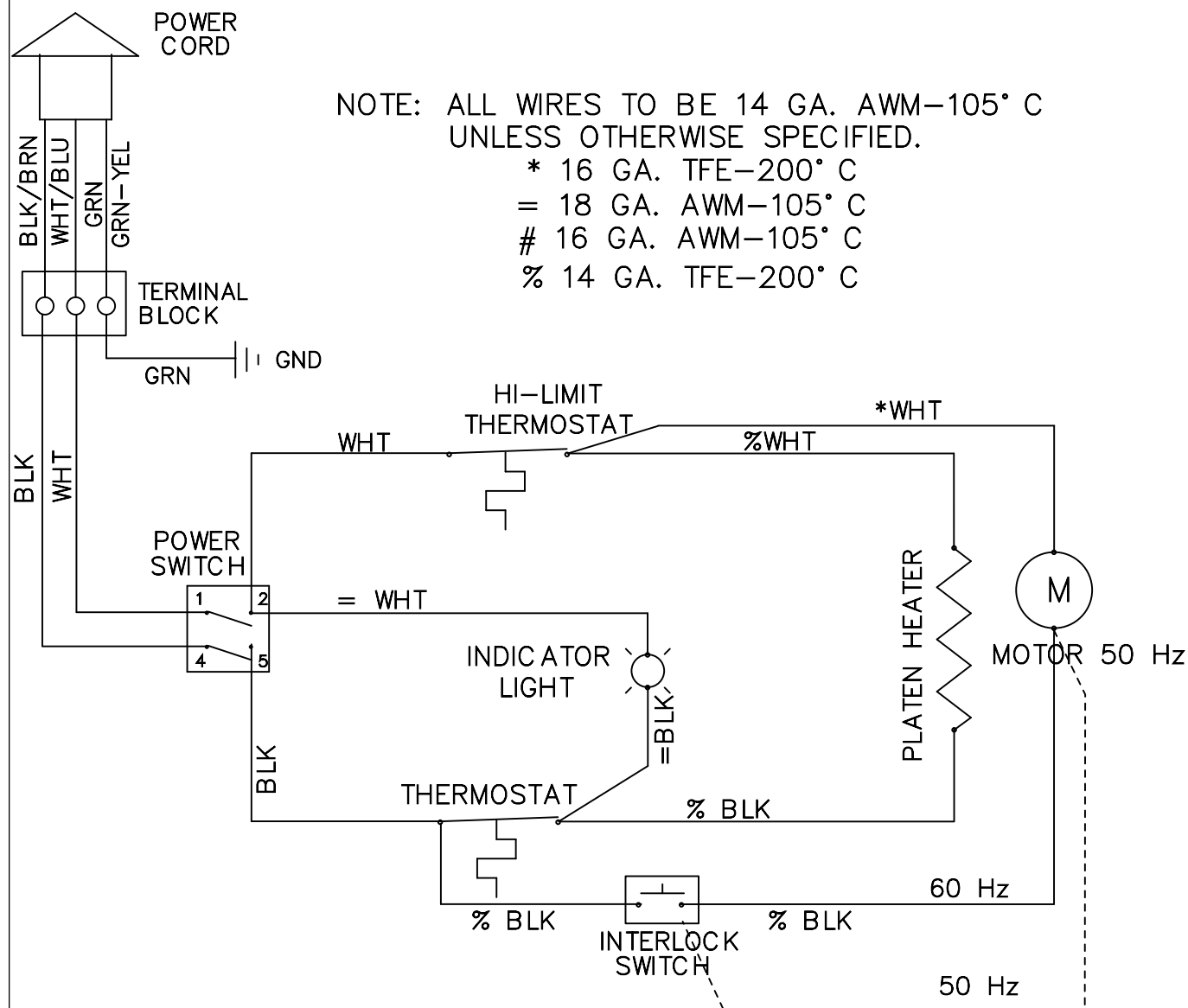
## TROUBLESHOOTING (continued)

Problem	Possible Cause	Corrective Action
Product is overly-toasted or Platen heat is too high or drop time is too slow.	Temperature set too high.	Set temperature control to a lower setting.
	Bun Thickness Compression Knobs set improperly.	Measure bun thickness and set Bun Thickness Compression Knobs correctly (Figure 7).
	Buns sticking on Release Sheet.	Clean or replace Release Sheet according to the procedure in the Maintenance section of this manual.
	Conveyor Cover Assembly not installed properly.	Re-install Conveyor Cover Assembly.
	Loose sprocket setscrews.	Check drive chain for kinks, broken or bent links, or other damage. Check motor sprocket and drive sprockets; tighten setscrew on flat of shaft if required. Check for damaged/worn sprocket and replace as required.
	Conveyor Belt Chain too loose.	Adjust Conveyor Belt Chain length as described in the Maintenance section of this manual.
	Spring Tensioner Assembly or Roller Tensioner is damaged or missing.	Replace Spring Tensioner Assembly or Roller Tensioner if damaged or missing.
Product is under toasted or Platen heat is too low or drop time is too fast.	Bun Thickness Compression Knobs set improperly.	Measure bun thickness and set Bun Thickness Compression Knobs correctly.
	Wiring problem.	Contact your maintenance person or Authorized Service Agency for service.
	Inoperable Thermostat.	
	Conveyor Drive Motor inoperable or incorrect conveyor motor installed in toaster.	
Product is getting stuck or Conveyor Belt Chains stop when product is toasting.	Bun Thickness Compression Knobs Set improperly.	Measure bun thickness and set Bun Thickness Compression Knobs correctly.
	Release Sheet not cleaned properly or is missing.	Clean or replace Release Sheet as described in the Maintenance section of this manual..
	Conveyor Drive motor inoperative or incorrect conveyor motor installed in toaster.	Contact your maintenance person or Authorized Service Agency for service.
	Conveyor Drive Chain loose, worn, or broken. Loose motor drive sprocket.	Check drive chain for kinks, broken or bent links, or other damage. Check motor sprocket and drive sprockets, tighten setscrew on flat of shaft if required. Check for damaged/worn sprockets and replace as required.
	Conveyor Belt Chain too loose.	Adjust Conveyor Belt Chain length as described in the Maintenance section of this manual.
	Spring Tensioner Assembly or Roller Tensioner is damaged or missing.	Replace Spring Tensioner Assembly or Roller Tensioner if damaged or missing.



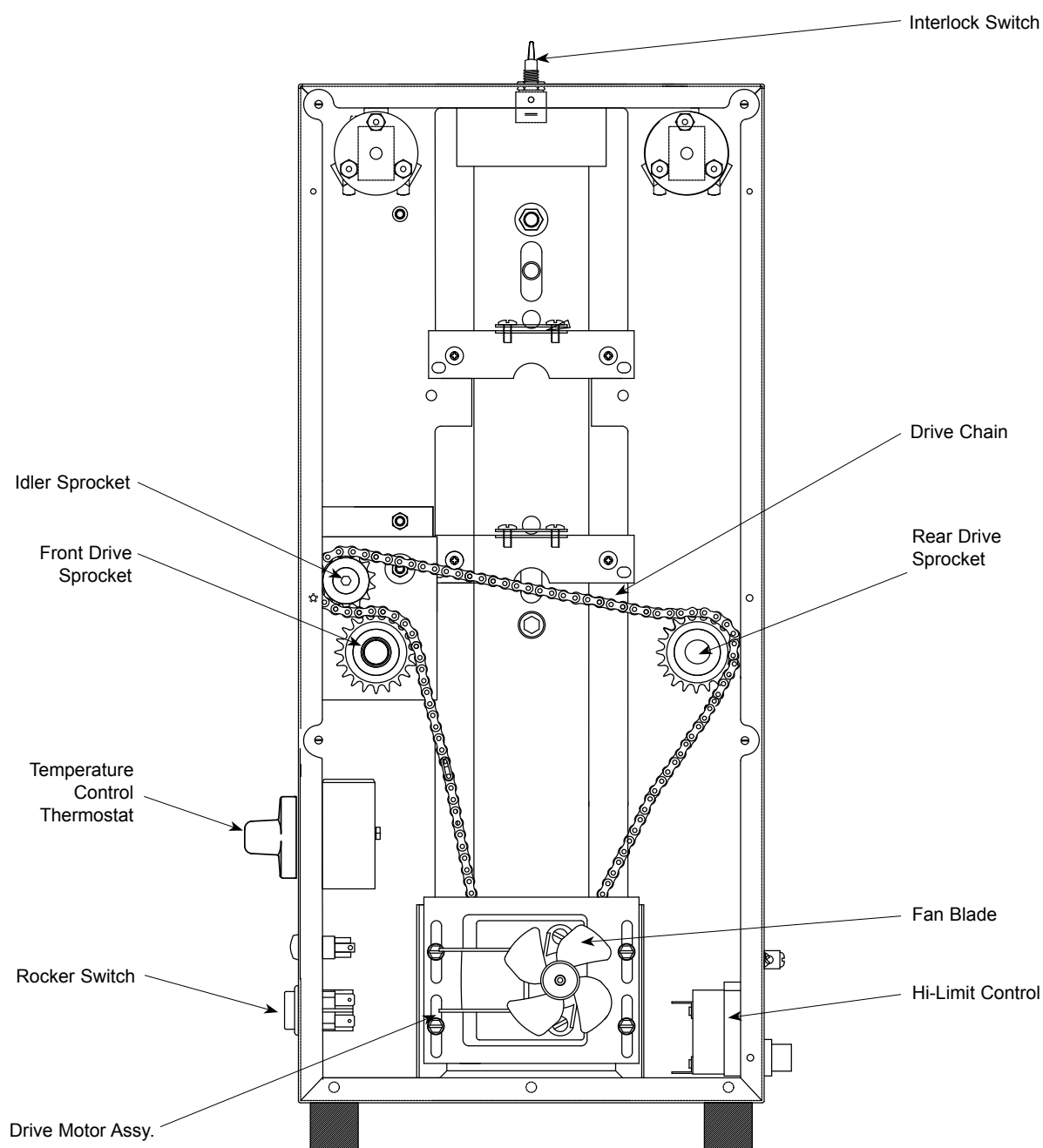
### WIRING DIAGRAM

Pictorial Wiring Diagram  
VCT-1000

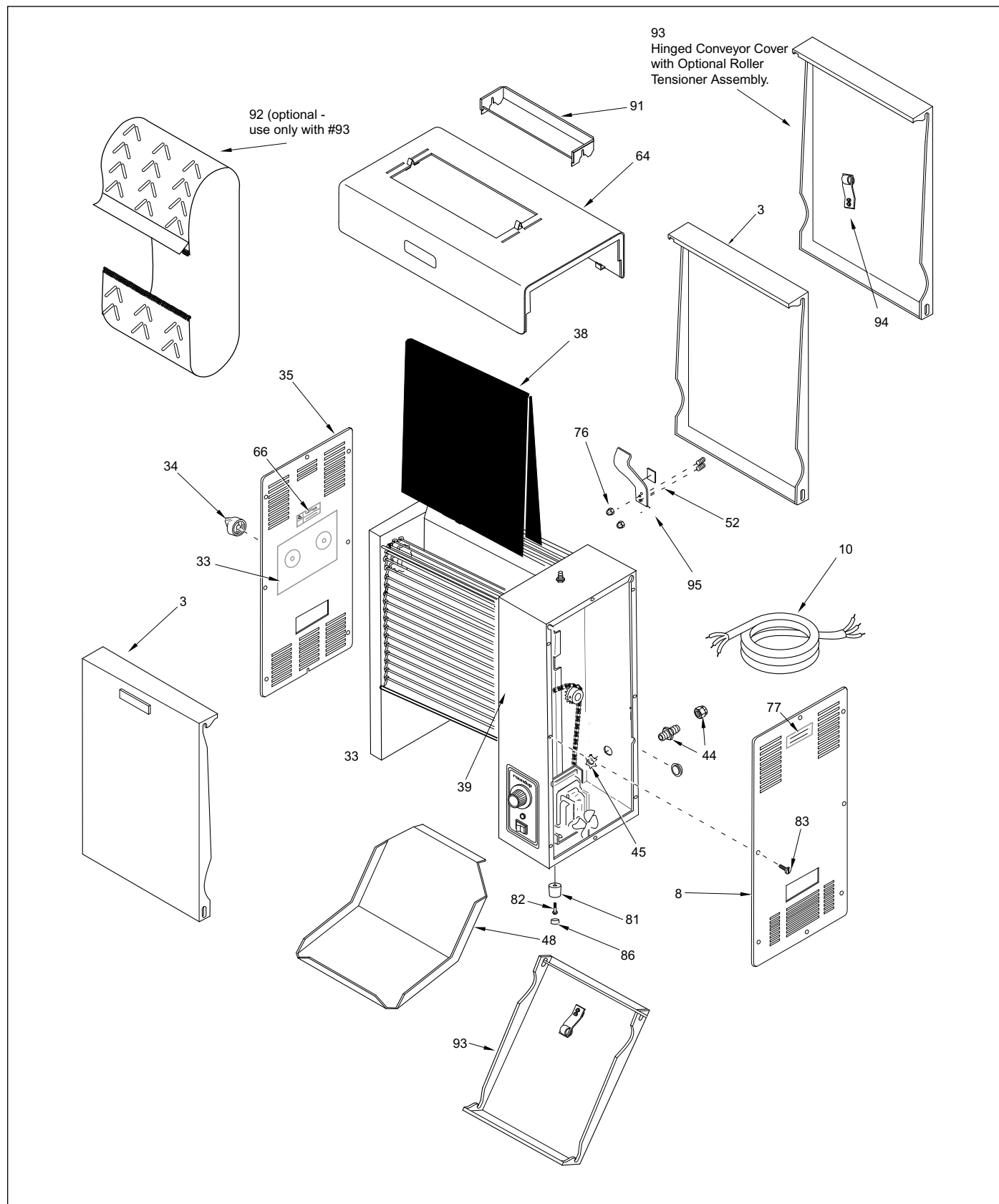


## REPLACEMENT PARTS

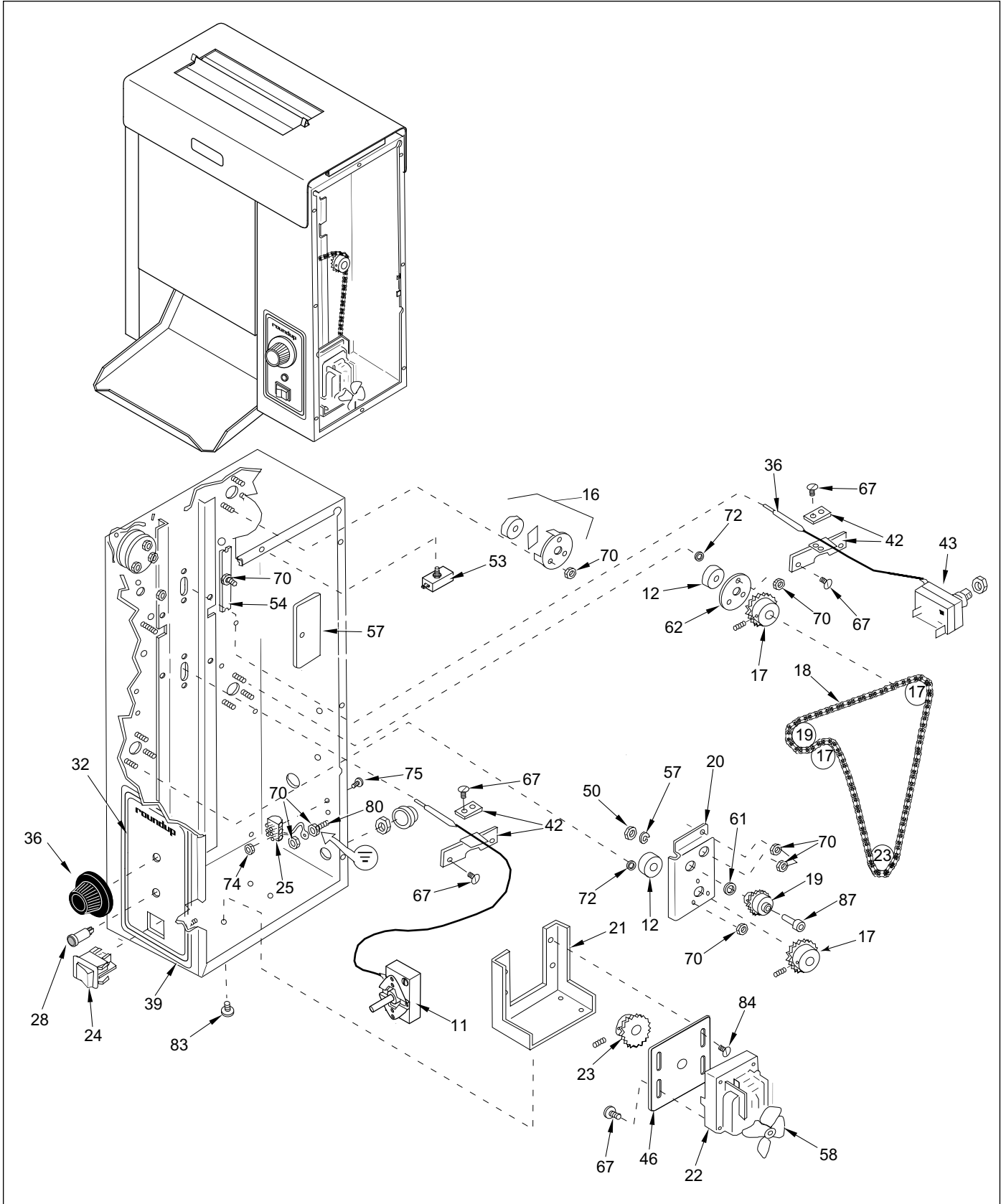
### Parts Identification



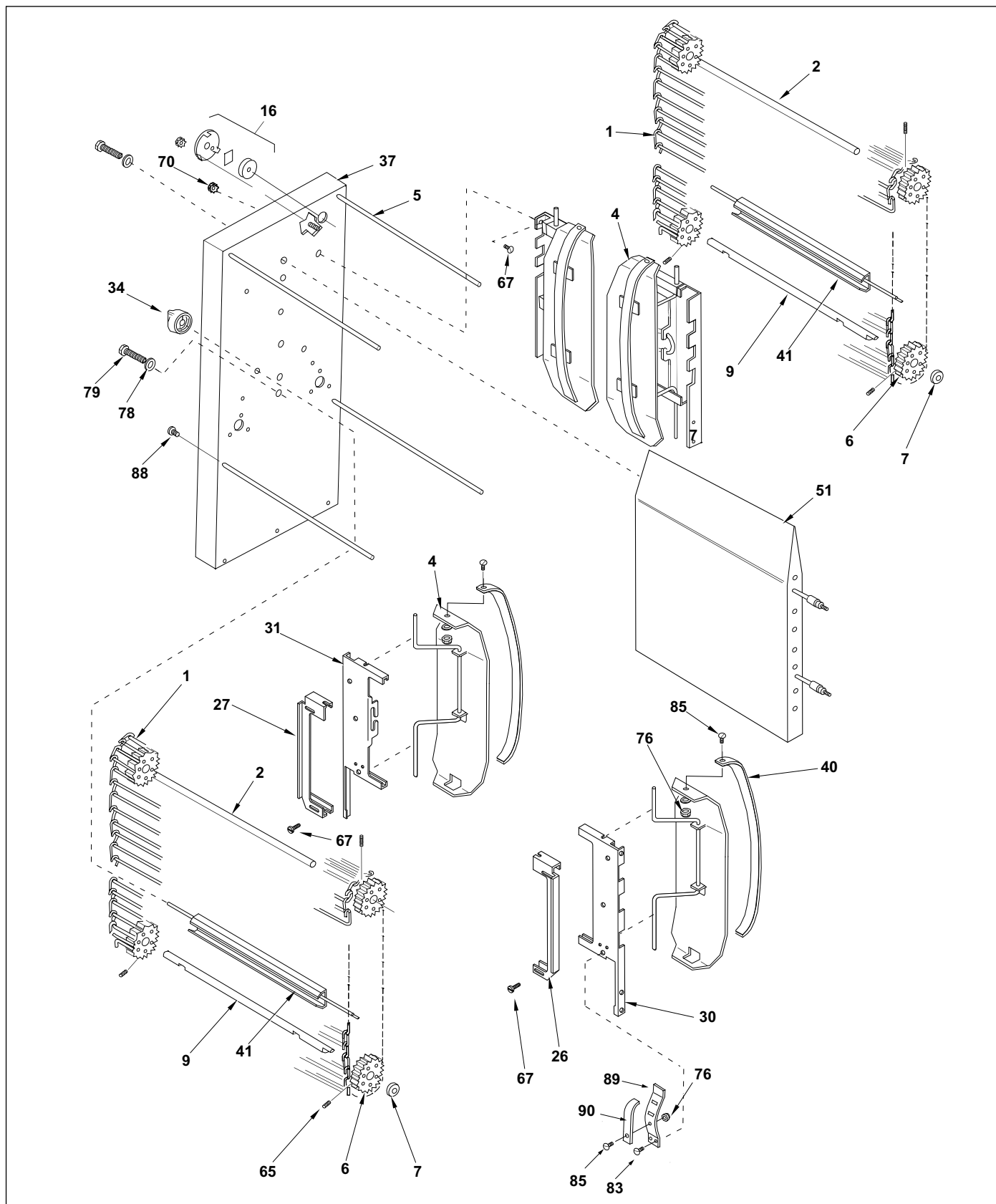
### REPLACEMENT PARTS (continued)



## REPLACEMENT PARTS (continued)



### REPLACEMENT PARTS (continued)



## REPLACEMENT PARTS (continued)

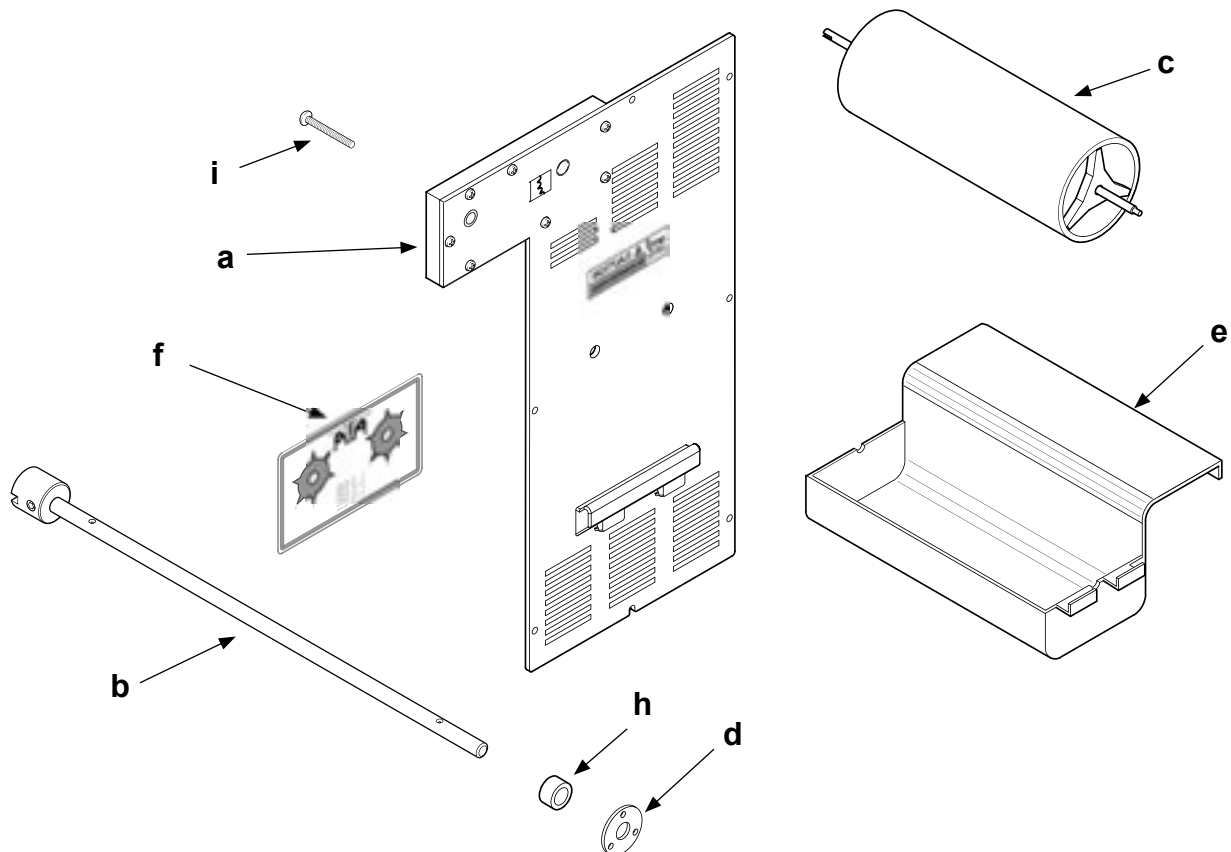
Item	Part No.	Description	Qty.
1	0011266	Conveyor Belt (Consists of below)	2
	0800204	1/2" Pitch Link, Small	2
	0800121	3/4" Pitch Link, Large	38
2	2150117	Idler Shaft	2
3	0011609	Conveyor Cover Assy. (Includes #95)	2
4	0010475	Tensioner Assy. (Incl. #40, 76, 85)	4
5	0800332	Rod, Conveyor Cover	4
6	7000207	Sprocket (Includes #65)	8
7	7000199*	Spacer Kit	2
8	0011444	Control Cover	1
9	2150118	Drive Shaft	2
10	0700452	Power Cord/Plug, NEMA 6-20P	1
	0700463	Power Cord/Plug, NEMA 5-15P	1
	0700437	Power Cord/Plug, IEC-309	1
	0700453	Power Cord/Plug, CEE 7/7	1
11	4030355	Thermostat, 600° F	1
12	7000296	Ball Bearing (2-Pak)	1
16	7000167	Bearing & Retainer Kit	6
16A	7000224	Bearing & Retainer Kit (Includes 6 of P/N# 7000167)	1
17	2150181	Drive Sprocket	2
18	2150187	Drive Chain	1
	2150215	Drive Chain (for MFG #9210714 & 720)	1
19	0011299	Idler Sprocket & Bearing	1
20	0011300	Bracket, Idler Sprocket Includes 50, 57, 61, 19, & 87)	1
21	0503589	Bracket, Motor Mounting	1
22	7000240	Drive Motor Kit 230 V (Incl. #58)	1
	7000282	Drive Motor Kit 120V (Incl. #58)	1
	7000271	Drive Motor Kit 230 V (for MFG # 9210714 & 720)	1
23	2150199	Sprocket, Motor (MFG# 9210700, 702, 706, & 708)	1
	2150211	Sprocket, Motor (MFG# 9210704 and 9210710, 9210712)	1
	2150112	Motor Sprocket (for MFG #9210714 & 720)	1
	2150173	Sprocket, Motor (Mfg. No. 9210716 & 722))	1
24	4010137	Rocker Switch, On/Off (250V)	1
	4010151	Rocker Switch, On/Off (125V)	1
25	4060355	Terminal Block	1
26	0503495	Retainer, Tension Bracket, RH	2
27	0503507	Retainer, Tension Bracket, LH	2
28	4060229	Indicator Light, Amber (250V)	1
	4060323	Indicator Light, Amber (125V)	1
29	0011374	Spring Tensioner Assy.	2
30	0503496	Tensioner Bracket, Right	2
31	0503497	Tensioner Bracket, Left	2
32	1000899	Label, Control	1
33	10P1047*	Label, Dial (Pack of 10)	1
34	2100253	Knob, Cam	2
35	0011445	Cover, End Housing	1
36	2100133	Knob, Thermostat Control	1
37	0021170	Weldment, End Housing	1
38	7000249	Release Sheet (Pack of 3)	-
	7000250	Release Sheet (Pack of 10)	-
39	0021194	Weldment, Control Housing	1

Item	Part No.	Description	Qty.
40	7000121	Slide Rail Kit (Incl. Qty. 2 Slide Rails for Tensioners)	2
41	0021207	Conveyor Cam	2
42	7000176	Thermocouple Retainer Kit	2
43	4030332	High Limit Control	1
44	0400251	Strain Relief	1
	0400315	Strain Relief (mfg # 9210704 only)	1
45	0400138	Locknut, 1/2"	1
46	0503590	Bracket, Motor	1
48	0503385	Bun Chute	1
50	331P101*	Nut, Hex, 5/16 x 18"	1
51	7000200	Platen (208 VOLT)	1
	7000229	Platen (120 VOLT)	1
	7000289	Platen (MFG# 9210712) (230 Volt)	1
52	2100266	Teflon Tape	2
53	4010107	Interlock Switch	1
57	0503608	Cover Plate	2
58	4000170	Fan Blade, Motor	1
59	2100256	Teflon Tape, Hi-Temp	8
61	212P118*	Flat Washer, 5/16"	1
62	0500464	Retainer, Bearing	1
64	0011528	Heat Shield Assy.	1
65	325P163	Set screw, 1/4-28 x 5/16"	8
66	100P864*	Label, Caution Hot	1
67	308P154*	Screw, #10-32 x 3/8"	2
68	306P104*	Screw, #6-32 x 1/4"	8
69	406P107*	Cable Tie	1
70	308P143*	Nut, #8-32, "KEPS"	6
71	310P103*	Screw, #10-32 x 1/4"	4
72	310P140*	Washer, #10	6
73	308P101*	Nut, #8-32	3
74	306P101*	Nut, Hex, #6-32	2
75	306P123*	Screw, #6-32 x 7/8"	2
76	308P145*	Nut, Hex Acorn, #8-32	14
77	100P900*	Label, Service	1
78	325P104*	Washer, 1/4"	4
79	325P109*	Screw, 1/4-20 x 1/2"	4
80	308P124*	Screw, 1-Way, #8-32 x 1/2"	1
81	210P230	Bumper, Recess Leg, 1"	4
82	310P136*	Screw, #10-32 x 1-1/4"	4
83	308P133*	Screw, #8-32 x 1/4"	12
84	308P183*	Screw, Hex Head, #8-32 x 3/8"	4
85	308P181*	Screw, Flat Hd., #8-32 x 3/8"	4
86	218P145*	Cover, Leg, Bumper	4
87	331P103*	Shoulder Bolt, 5/16-18 x 1"	1
88	306P105*	Screw, #6-32 x 1/2"	1
89	0503455	Tension Spring, Inner	4
90	2100259	Slide Bar	4
91	0011549	Bun Feeder	1
92	7000192	Belt Wrap (optional for Mfg. No. 9210716 and 722)	1
93	0011491	Conveyor Cover Assy. (9210706, 708, 710, & 716, 722) (Includes #94)	1
94	7000186	Roller Tensioner Kit (2-Pak)	1
95	0011374	Spring Tensioner (Includes #52)	2

\* Only available in packages of 10.

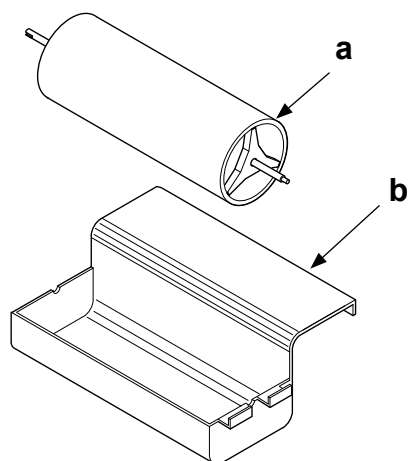
**OPTIONAL PARTS – VCT-1000**

**Mechanical Butter Wheel Kit (model 7000298) Requires Professional Installation.**



Item	Part No.	Description	Qty.
1	7000298	Butter Wheel Kit (consists of the following):	
a	0011552	End Housing Cover Assy.	1
b	0011573	Idler Shaft Assembly	1
c	0021320	Roller Weldment	1
d	0500464	Retainer, Bearing	1
e	0503987	Pan, Butter	1
f	1001047	Label, Dial Compression	1
g	1010773	Instruction Sheet (not shown)	1
h	2120107	Spacer, Aluminum	1
i	3080162	#8-32x1-1/4 Screw (not shown)	1

**Mechanical Butter Wheel Kit  
(model 7000238)**



Item	Part No.	Description	Qty.
1	7000238	Butter Wheel Kit (consists of the Following)	
a	0020205	Butter Roller Weldment	1
b	0021232	Butter Tray Weldment	1

## LIMITED WARRANTY

Equipment manufactured by Roundup Food Equipment Division of A.J. Antunes & Co. has been constructed of the finest materials available and manufactured to high quality standards. These units are warranted to be free from mechanical and electrical defects for a period of one year from date of purchase or 18 months from shipment from factory, whichever occurs first, under normal use and service, and when installed in accordance with manufacturer's recommendations.

To insure continued proper operation of the units, follow the maintenance procedure outlined in the Owner's Manual.

1. This warranty does not cover cost of installation, defects caused by improper storage or handling prior to placing of the Equipment. This warranty does not include overtime charges or work done by unauthorized service agencies or personnel. This warranty does not cover normal maintenance, calibration, or regular adjustments as specified in operating and maintenance instructions of this manual, and/or labor involved in moving adjacent objects to gain access to the Equipment. This warranty does not cover consumable items such as Platen Release Sheet and Conveyor Belt Wraps. **This warranty does not pay travel, mileage, or any other charges for an authorized service agency to reach the equipment location.**
2. Roundup reserves the right to make changes in design or add any improvements on any product. The right is always reserved to modify equipment because of factors beyond our control and government regulations. Changes to update equipment do not constitute a warranty charge.
3. If shipment is damaged in transit, the purchaser should make a claim directly upon the carrier. Careful inspection should be made of the shipment as soon as it arrives and visible damage should be noted upon the carrier's receipt. Damage should be reported to the carrier. This damage is not covered under this warranty.
4. Warranty charges do not include freight or foreign, excise, municipal or other sales or use taxes. All such freight and taxes are the responsibility of the purchaser.
5. THIS WARRANTY IS EXCLUSIVE AND IS IN LIEU OF ALL OTHER WARRANTIES, EXPRESSED OR IMPLIED, INCLUDING ANY IMPLIED WARRANTY OR MERCHANTABILITY OR FITNESS FOR A PARTICULAR PURPOSE, EACH OF WHICH IS HEREBY EXPRESSLY DISCLAIMED. REMEDIES DESCRIBED ABOVE ARE EXCLUSIVE AND IN NO EVENT SHALL ROUNDUP BE LIABLE FOR SPECIAL CONSEQUENTIAL OR INCIDENTAL DAMAGES FOR THE BREACH OR DELAY IN PERFORMANCE OF THIS WARRANTY.



A.J. Antunes & Co.

A.J. Antunes & Co.  
Headquarters/Manufacturing  
180 Kehoe Boulevard  
Carol Stream, Illinois 60188 USA  
Phone (630) 784-1000  
Toll Free (800) 253-2991  
Fax: (630) 784-1650

Antunes Equipment  
Manufacturing (Suzhou) Ltd.,  
9 Hou Ju Road, Building #24,  
S&T Park, SND  
Suzhou, Jiangsu, China 215011  
Phone: 86-512-6841-3637  
Fax: 86-512-6841-3907

[www.ajantunes.com](http://www.ajantunes.com)