



SDU50 and SDU90 Shortening Disposal Units

Project _____
 Item _____
 Quantity _____
 CSI Section 11400 _____
 Approval _____
 Date _____

Shortening Disposal Units

Models

PSDU50

PSDU90



Standard Features

- 9.6" (244 mm) drain height (with cover open) allows unit to fit under most fryers to permit direct draining of fryers into unit
- Heavy-duty manual pump can empty 50 lbs. (25 liters) of oil in less than 60 seconds
- Large 7" (178 mm) wheels provide easy transporting of oil, even across parking lots; and no lifting is necessary
- One-year warranty

Options & Accessories

- 24" hose
- 48" hose

Specifications

Specifically designed for the removal of waste oil from the kitchen

Dean provides the answer for the transportation of waste oil from the kitchen to the disposal container, with shortening disposal units, available in 50- and 90-lb. (25 and 45 liter) capacities.

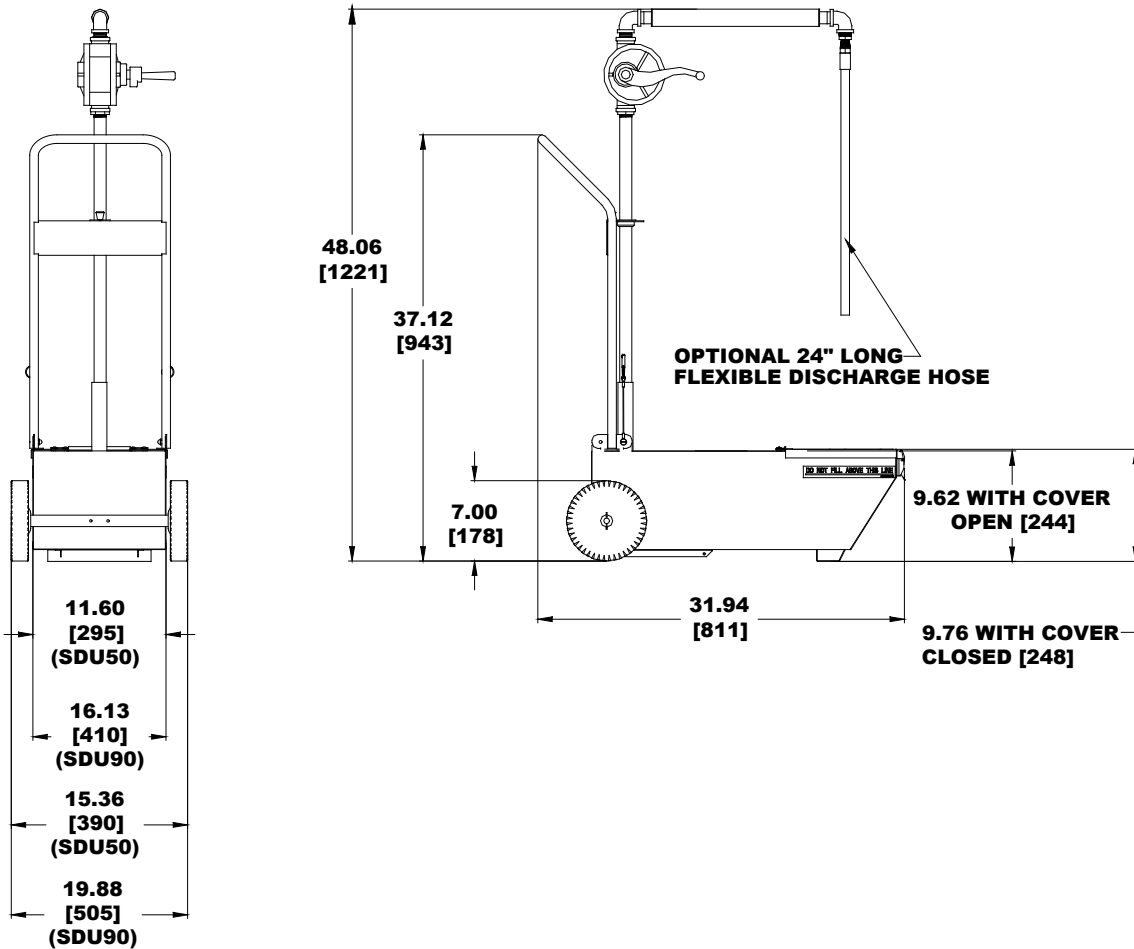
The low center of gravity provides stability when transporting or operating the unit. The heavy-duty manual pump is located at a convenient height; so there is no stooping or bending required. Also, there is no lifting required to operate the unit.

5489 Campus Drive
Shreveport, LA 71129 USA

Tel: 318-865-1711
Tel: 1-800-221-4583
Fax: 318-868-5987
E-mail: info@dean.enodis.com

<http://dean.enodis.com>
Bulletin No. 830-0044 11/07
Litho in U.S.A. ©Frymaster, LLC

Enodis®



DIMENSIONS

MODEL NO.	SHORTENING CAPACITY	ASSEMBLED SIZE (mm)			DRAIN HEIGHT (mm)	NET WEIGHT	SHIPPING INFORMATION			SHIPPING DIMENSIONS		
		HEIGHT	WIDTH	LENGTH			WEIGHT	CLASS	CUBE	HEIGHT	WIDTH	LENGTH
PSDU50	50 lbs. (25 liters)	48.06" (1221)	15.36" (390) Overall 11.60" (295) Tank Only	31.94" (811)	9.62" (244) w/door open	45 lbs. (20 kg)	62 lbs. (28 kg)	85	7	20" (508)	21" (533)	30" (762)
PSDU90	90 lbs. (45 liters)	48.06" (1221)	19.88" (505) Overall 16.13" (410) Tank Only	31.94" (811)	9.62" (244) w/door open	49 lbs. (22 kg)	67 lbs. (30 kg)	85	10	20" (508)	23" (584)	39" (991)

SHORT TERM SPECIFICATION

Shall be DEAN shortening disposal unit, Model # _____
_____, only _____" wide x _____" deep with _____ oil
capacity

ORDERING DATA

Please specify:
SDU50 -- 50 lb. (28 L) capacity
SDU90 -- 90 lb. (50 L) capacity