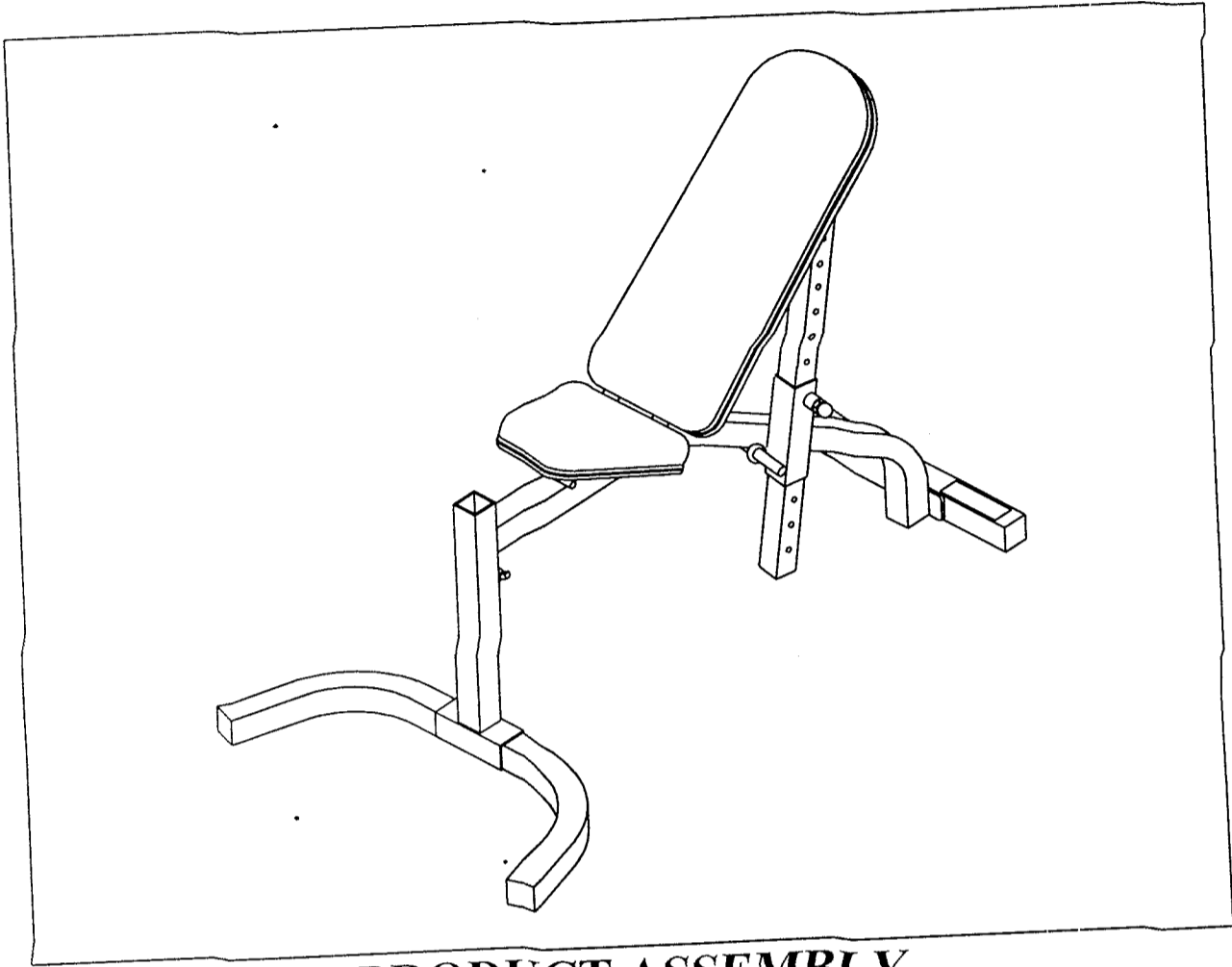


**874104  
MULTI-ANGLE BENCH**



**PRODUCT ASSEMBLY  
INSTRUCTIONS SHEETS**

874104  
2/15/95

**874104 MULTI-ANGLE BENCH ASSEMBLY PARTS LIST**

**SORT AND COUNT ALL PARTS BEFORE BEGINNING ASSEMBLY**

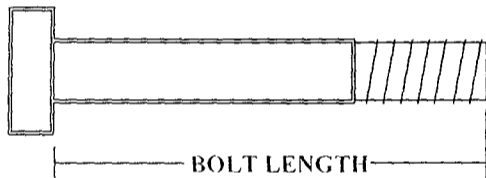
**HARDWARE:**

ITEM	NAME/DESCRIPTION	QTY
1.	3/8 X 3 IN. BOLT .....	4
2.	3/8 X 1-1/4 IN. BOLT .....	6
3.	1/2 X 8 IN. BOLT .....	1
4.	3/4 IN. WASHER .....	1
5.	3/8 IN. WASHER .....	14
6.	3/8 IN. LOCK WASHER .....	6
7.	3/8 IN. LOCK NUT .....	4
8.	1/2 IN. LOW HEIGHT LOCK NUT.....	1
9.	3/4 IN. FLANGE BEARING .....	4
10.	STAR LOCK COLLAR .....	2
11.	SPRING PIN ASSEMBLY .....	1
12.	1/2 X 1 IN. SPRING .....	1
13.	PAL NUT .....	1
14.	THUMBSCREW .....	1
15.	2 IN. SQ. END CAP .....	6
16.	1-3/4 IN. SQ. END CAP .....	2
17.	PARAGLIDE STRIP (8 PER) .....	1

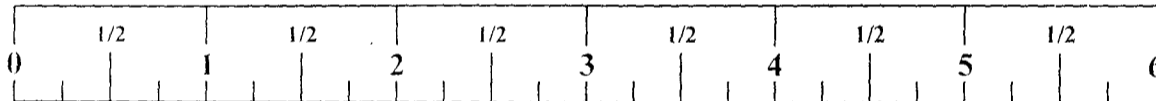
**WELDMENTS/PARTS:**

ITEM	NAME/DESCRIPTION	QTY
1.	BENCH FRAME WLDMT .....(6475401).....	1
2.	SWIVEL WLDMT .....(6474901).....	1
3.	ADJUSTMENT SLIDE WLDMT .....(6415001).....	1
4.	PAD SUPPORT WLDMT .....(6517101).....	1
5.	REAR BASE TUBE .....(6236501).....	1
6.	FRONT BASE TUBE .....(6259101).....	1
7.	HINGE TAB .....(6406401).....	2
8.	U-PIN .....(6406501).....	1
9.	SEAT PAD .....(6452501).....	1
10.	BACK PAD .....(6517201).....	1

**NOTE: BOLT LENGTH IS MEASURED FROM THE UNDERSIDE OF THE HEAD OF THE BOLT.**



**BOLT LENGTH RULER:**



## 874104 MULTI-ANGLE BENCH ASSEMBLY INSTRUCTIONS

### **THANK YOU**

FOR PURCHASING THE *874 MULTI-ANGLE BENCH*. PLEASE SAVE THESE ASSEMBLY INSTRUCTIONS FOR YOUR PERSONAL REFERENCE, AND ADDITIONAL SERVICE INFORMATION.

### **\*\*\*IMPORTANT\*\*\***

- THE *874 MULTI-ANGLE BENCH* MUST BE ASSEMBLED ON A FLAT, LEVEL SURFACE TO ASSURE ITS PROPER FUNCTION.
- IF YOU EXPERIENCE ANY PROBLEM WITH THE ASSEMBLY OF THIS PRODUCT, PLEASE CONTACT YOUR DEALER OR YOUR PARABODY CUSTOMER SERVICE REPRESENTATIVE AT: 1-800-328-9714
- **TOOLS REQUIRED:** RATCHET, 9/16 SOCKET or WRENCH, ADJUSTABLE WRENCH, and RUBBER MALLET or HAMMER

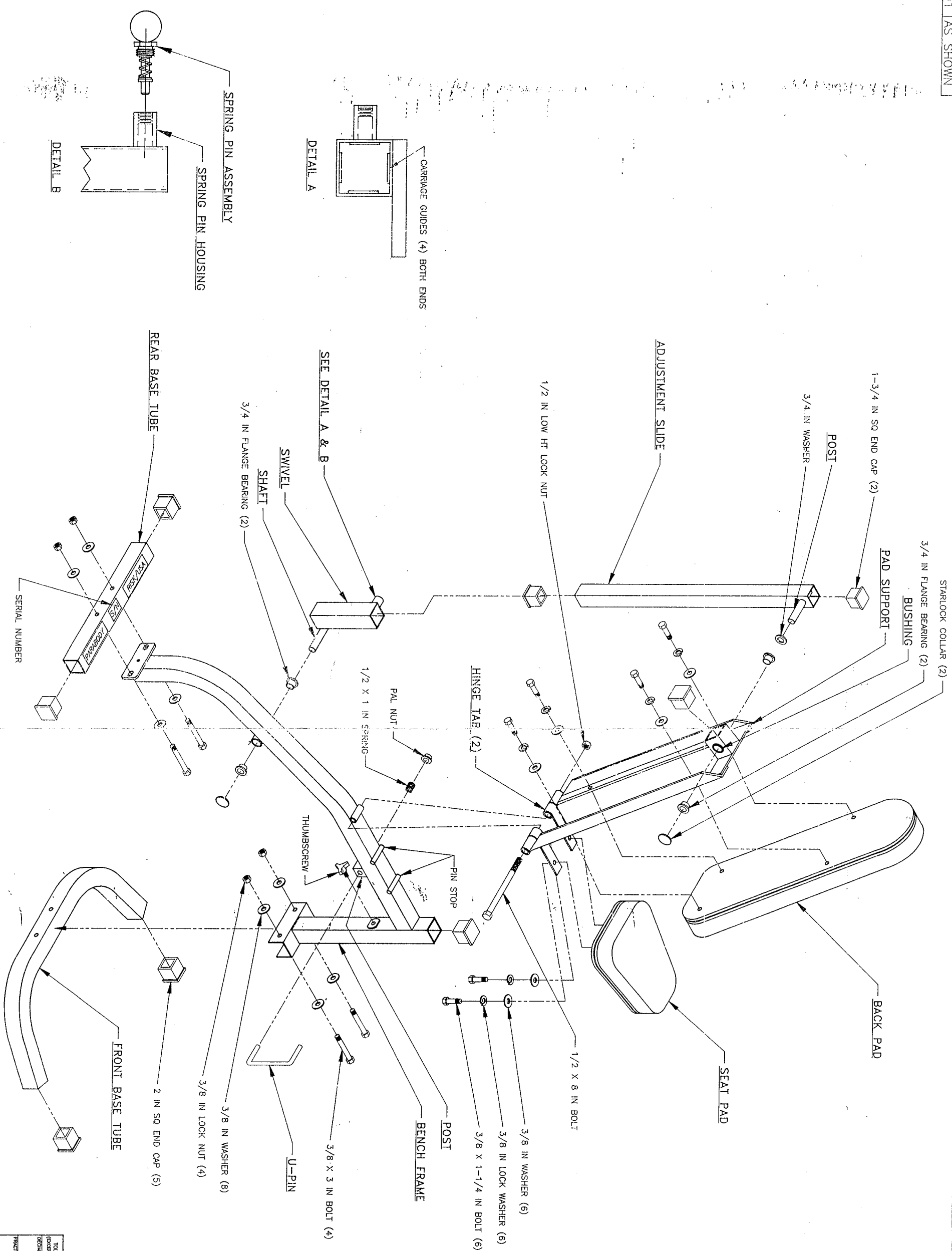
1. Insert one (1) U-PIN through the **POST** on the **BENCH FRAME**, as shown on drawing. Slide one (1) 1/2 X 1 IN. SPRING over the U-PIN. Attach one (1) PAL NUT to the end of the U-PIN.
2. Insert two (2) 2 IN. SQ. END CAPS into both ends of the **REAR BASE TUBE** as shown on drawing.
3. **SECURELY** assemble the **REAR BASE TUBE** to the **BENCH FRAME** as shown on drawing, using two (2) 3/8 X 3 IN. BOLTS, four (4) 3/8 IN. WASHERS, and two (2) 3/8 IN. LOCK NUTS.
4. Insert two (2) 2 IN. SQ. END CAPS into both ends of the **FRONT BASE TUBE** as shown on drawing.
5. **SECURELY** assemble the **FRONT BASE TUBE** to the **BENCH FRAME** as shown on drawing, using two (2) 3/8 X 3 IN. BOLTS, four (4) 3/8 IN. WASHERS, and two (2) 3/8 IN. LOCK NUTS.
6. Insert one (1) 2 IN. SQ. END CAP into the end of the **PAD SUPPORT** as shown on drawing.
7. Loosely assemble the **PAD SUPPORT** and two (2) **HINGE TABS** to the **BUSHING** on the **BENCH FRAME** using one (1) 1/2 X 8 IN. BOLT and one (1) 1/2 LOW HEIGHT LOCKNUT. (**DO NOT OVERTIGHTEN THE BOLT. THE PAD SUPPORT MUST ROTATE FREELY.**)
8. Attach eight (8) PARAGLIDE STRIPS to both ends of the **SWIVEL** as shown in (**DETAIL A**) using the following steps:
  - Thoroughly clean all surfaces where the PARAGLIDE STRIPS are to be attached.
  - Remove paper backing from the PARAGLIDE STRIPS and firmly apply them to all shown surfaces.

## 874104 MULTI-ANGLE BENCH ASSEMBLY INSTRUCTIONS

---

9. SECURELY Assemble one (1) SPRING PIN ASSEMBLY to the SWIVEL, as shown in (DETAIL B).
10. Insert two (2) 3/4 IN. FLANGE BEARINGS into the BUSHING on the BENCH FRAME as shown on drawing.
11. Insert the SHAFT of the SWIVEL through the 3/4 IN. FLANGE BEARINGS on the BENCH FRAME as shown on drawing, and SECURE in place with one (1) STAR LOCK COLLAR.
12. Insert two (2) 3/4 IN. FLANGE BEARINGS into the BUSHING on the PAD SUPPORT as shown on drawing.
14. Insert two (2) 1-3/4 IN. SQ. END CAPS into both ends of the ADJUSTMENT SLIDE as shown on drawing.
15. Slide one (1) 3/4 IN. WASHER over the SHAFT of the ADJUSTMENT SLIDE. Insert the SHAFT of the ADJUSTMENT SLIDE through the 3/4 IN. FLANGE BEARINGS on the PAD SUPPORT as shown on drawing, and SECURE in place with one (1) STAR LOCK COLLAR.
16. Pull back the SPRING PIN on the SWIVEL, and insert the ADJUSTMENT SLIDE, down to the first adjustment hole. Release the SPRING PIN into the hole.
17. SECURELY attach the BACK PAD to the PAD SUPPORT using four (4) 3/8 X 1-1/4 IN. BOLTS, four (4) 3/8 IN. LOCK WASHERS, and four (4) 3/8 IN. WASHERS.
18. SECURELY attach the SEAT PAD to the HINGE TABS using two (2) 3/8 X 1-1/4 IN. BOLTS, two (2) 3/8 IN. LOCK WASHERS, and two (2) 3/8 IN. WASHERS.
19. To adjust the SEAT PAD for the LEG EXTENSION position, pull out on the U-PIN. Rotate the U-PIN back pass the FIRST PIN STOP. Release the U-PIN, and allow it to rest up against the FIRST PIN STOP.
20. To adjust the SEAT PAD for the DECLINE or INCLINE position, rotate the U-PIN back to the SECOND PIN STOP.
21. The extra 2 IN. SQ. END CAP is for the top of the UPRIGHT TUBE on the BENCH FRAME. If attachments will be used, this CAP will not be needed.
22. Insert one (1) THUMBSCREW into the UPRIGHT TUBE of the BENCH FRAME as shown on drawing. This will be used for securing attachments in place.

REVISIONS			
REV	DESCRIPTION	DATE	APP'D
A	NEW RELEASE	1/27/71	JRS



TOLERANCES (UNLESS OTHERWISE SPECIFIED)	~
FRACTIONAL	~
DECIMAL	~
ANGULAR	~
TITLE ASSY INST, 874104 SIZE DRAWING NO. D SHEET 1 OF 1 DATE JWE 2/95 64755 1/25 1/25 1/25	