

AC0101



Illustrated Parts List

Model Series

AC0101

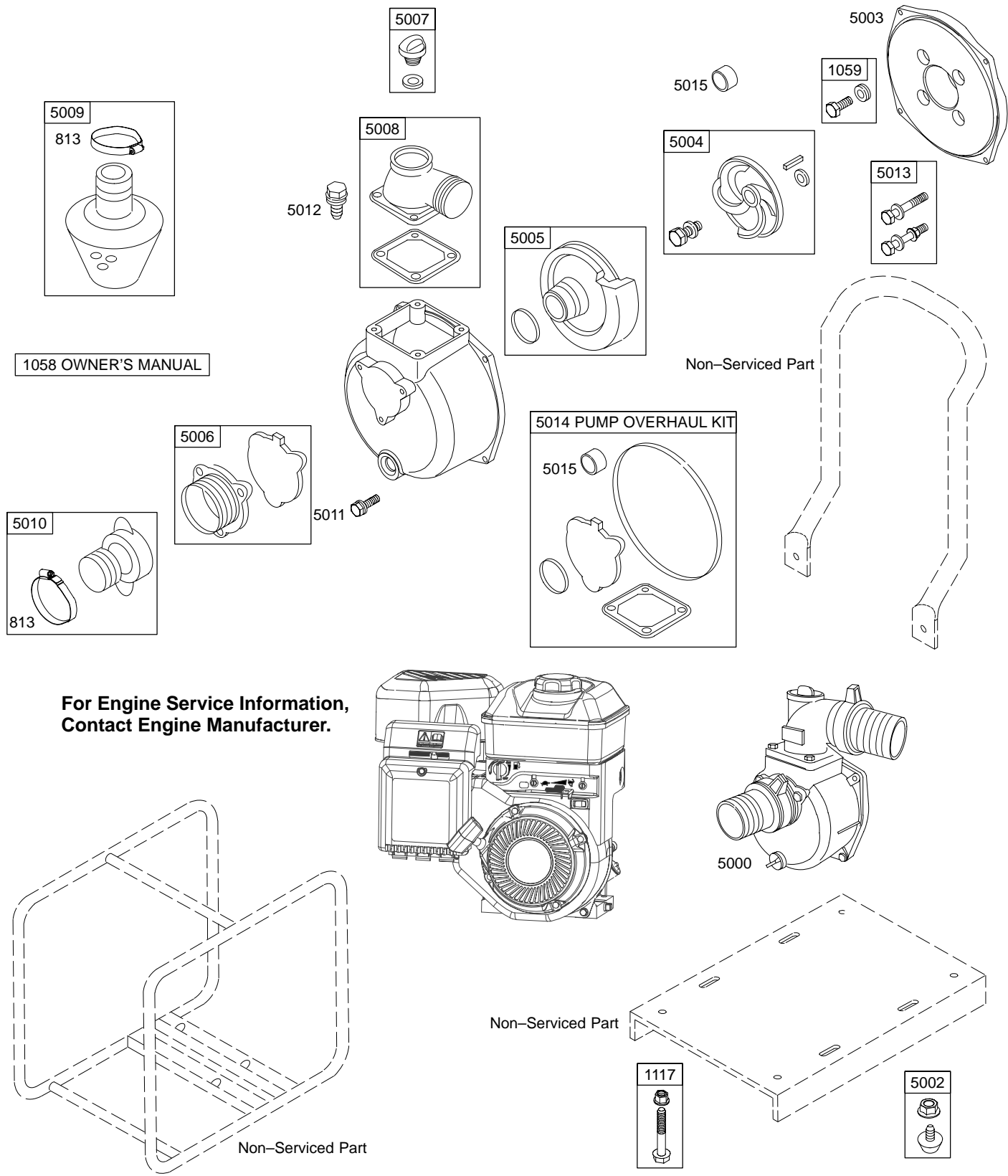
2" Water Pump



PRINTED IN U.S.A.

COPYRIGHT by BRIGGS & STRATTON CORPORATION
All rights reserved. No part of this material may be reproduced or transmitted,
in any form or by any means, electronic or mechanical, including photocopying,
recording or by any information storage and retrieval system, without permission
in writing from Briggs & Stratton Corporation.

AC0101



REF. NO.	PART NO.	DESCRIPTION	REF. NO.	PART NO.	DESCRIPTION	REF. NO.	PART NO.	DESCRIPTION
813	865110	Clamp	5000	865085	Pump-Water 2" Outlet	5011	865104	Screw (Inlet Flange)
1058	MS5234	Owner's Manual Used on Type No(s). 0001, 0002, 0003.	5002	865089	Foot-Rubber Used on Type No(s). 0001.	5012	865106	Screw (Outlet Flange)
		Note _____	5003	865087	Bracket-Flange	5013	865108	Kit-Screw/Nut (Pump Housing to Flange)
	MS5238	Owner's Manual Used on Type No(s). 0005.	5004	865090	Impeller	5014	865114	Kit-Pump Overhaul
1059	865112	Kit-Screw/Washer (Flange to Crankcase Cover)	5005	865092	Volute	5015	865148	Seal-Impeller
1117	865147	Screw (Engine Mount)	5006	865094	Flange-Inlet			
			5007	865096	Drain-Water			
			5008	865098	Flange-Outlet			
			5009	865100	Strainer-Water			
			5010	865102	Coupling-Water			