

HomeLink® Series

Phoneline 10M Integrated PC Card



Use this User Guide to Install the PCM200HA

User Guide

 **LINKSYS®**

COPYRIGHT & TRADEMARKS

Copyright © 2001 Linksys, All Rights Reserved. HomeLink is a registered trademark of Linksys. Microsoft, Windows, and the Windows logo are registered trademarks of Microsoft Corporation. All other trademarks and brand names are the property of their respective proprietors.

LIMITED WARRANTY

Linksys guarantees that every HomeLink Phoneline 10M Integrated PC Card is free from physical defects in material and workmanship under normal use for one (1) year from the date of purchase. If the product proves defective during this warranty period, call Linksys Customer Support in order to obtain a Return Authorization number. BE SURE TO HAVE YOUR PROOF OF PURCHASE AND BARCODE FROM THE PRODUCT'S PACKAGING ON HAND WHEN CALLING. RETURN REQUESTS CANNOT BE PROCESSED WITHOUT PROOF OF PURCHASE. When returning a product, mark the Return Authorization number clearly on the outside of the package and include your original proof of purchase.

IN NO EVENT SHALL LINKSYS' LIABILITY EXCEED THE PRICE PAID FOR THE PRODUCT FROM DIRECT, INDIRECT, SPECIAL, INCIDENTAL, OR CONSEQUENTIAL DAMAGES RESULTING FROM THE USE OF THE PRODUCT, ITS ACCOMPANYING SOFTWARE, OR ITS DOCUMENTATION. LINKSYS DOES NOT OFFER REFUNDS FOR ANY PRODUCT. Linksys makes no warranty or representation, expressed, implied, or statutory, with respect to its products or the contents or use of this documentation and all accompanying software, and specifically disclaims its quality, performance, merchantability, or fitness for any particular purpose. Linksys reserves the right to revise or update its products, software, or documentation without obligation to notify any individual or entity. Please direct all inquiries to:

Linksys P.O. Box 18558, Irvine, CA 92623.

FCC STATEMENT

This equipment complies with FCC Rules Part 68. Located on the bottom of the HomeLink Phoneline 10M Integrated PC Card is the FCC Registration Number. You must provide this information to the telephone company if requested.

The HomeLink Phoneline 10M Integrated PC Card has been tested and found to comply with the limits for a Class B digital device, pursuant to Part 15 of the FCC Rules. These limits are designed to provide reasonable protection against harmful interference in a residential installation. This equipment generates, uses, and can radiate radio frequency energy and, if not installed and used according to the instructions, may cause harmful interference to radio communications. However, there is no guarantee that interference will not occur in a particular installation. If this equipment does cause harmful interference to radio or television reception, which is found by turning the equipment off and on, the user is encouraged to try to correct the interference by one or more of the following measures:

- Reorient or relocate the receiving antenna
- Increase the separation between the equipment or device
- Connect the equipment to an outlet other than the receiver's
- Consult a dealer or an experienced radio/TV technician for assistance

UG-PCM200HA NC AC

Table of Contents

Introduction	1
Package Contents	2
Getting to Know the 10M Phonenumber Integrated PC Card	3
Installing the 10M Integrated PC Card	4
Windows 98 and ME Installation and Setup	6
Windows 2000 Installation and Setup	15
Troubleshooting	18
Appendix	21
Sharing Your Files and Printers	21
Starting Over in Windows 98, ME, or 2000	23
Manually Installing the Network Components in Windows 98 and Millennium	29
Fax and Modem Compatibility	30
Specifications	31
Warrant Information	32
Contact Information	33

Introduction

The Linksys Phonenumber 10M Integrated PC Card

Congratulations on your purchase of the Linksys HomeLink Phonenumber 10M Integrated PC Card. The Linksys HomeLink Phonenumber 10M Integrated PC Card now offers instant connectivity to multiple PC's over a home's existing telephone lines. You can network any notebook computer by connecting it to any standard phone line. There's no need for a switch, a hub, or even any additional cables—the network runs on standard home-grade telephone wires just like the ones you use everyday.

The HomeLink Phonenumber 10M Integrated PC Card is the ultimate in versatile connectivity for mobile users. The 32-Bit PC Card is equipped with two standard RJ-11 telephone ports. You can connect to any 1Mbps or 10Mbps HomeLink network without swapping cards. The card fits into any standard 32-Bit Cardbus slot, leaving room for a 56K modem or other PC Card in dual-slot notebooks. You can share files, printers, and CD-ROM drives at 10Mbps without interrupting regular telephone service. Since your HomeLink network runs on regular telephone cables, there's no extra hardware to buy. Just plug it into any standard wall jack and you're networked!

The Linksys HomeLink Phonenumber 10M Integrated PC Card utilizes advanced technology approved by the Home Phonenumber Networking Alliance (HomePNA). This new technology lets your phone line carry computer data as well as regular telephone voice service. You can talk on the telephone and share resources over a network at the same time. Every standard telephone jack in the home is capable of hosting a PC—you can connect up to 30 computers, thus transforming the home's telephone wiring into an easily expandable network. Want to add more PCs? Just put a HomeLink card in the computer and plug it into your phone jack. It's that simple!

Package Contents for the Phoneline 10M Integrated PC Card



- One Phoneline 10M Integrated PC Card with Two RJ-11 Ports
- One Standard Telephone Cable
- One Driver CD-ROM
- One User Guide and Registration Card



Getting to Know the Phoneline 10M Integrated PC Card

LEDs

- Link** The green LED will remain lit when the Phoneline 10M Integrated PC Card is connected.
- Rx** The Receive LED will blink green when data is being received across the the phone cable.
- Tx** The Transfer LED will blink green when data is being transmitted across the phone cable.

The RJ-11 Ports

- Phone:** The Phone port will allow you to connect a standard telephone to your PCM200HA. You may also use the phone port to connect to another HomeLink-equipped PC or into a phone jack.
- HomeLink:** Use the HomeLink port to connect to your existing HomeLink network.

Installing the Phoneline 10M Integrated PC Card

Installing the Hardware

1. Power off your PC.
2. Locate your PC's card slot. The slot is usually located on the side of the PC. If your computer has more than one slot, insert the HomeLink Phoneline 10M Integrated PC Card into the first slot as shown in the picture below (slots are usually numbered in sequential order starting with 0 or 1). After verifying that the HomeLink Phoneline 10M Integrated PC Card's hardware and software are working correctly, you can always move the card to a different slot later if needed.



3. Attach one end of the telephone cable to the HomeLink card's HomeLink port. Connect the other end of the cable into the telephone jack in your wall.

The hardware installation is complete.

Connecting to a Phoneline Network

Computers on a HomeLink network can be connected in one of two ways. They can be daisy chained through their HomeLink port to another HomeLink PC in a string, or they can be connected directly to a phone jack. The diagram below shows a HomeLink phoneline network that uses both types of connections.



To connect your HomeLink PCs together in your HomeLink network:

1. **Connect one end of your telephone cabling** to your Phoneline 10M Integrated PC Card's **HomeLink** port.
2. **Connect the other end of that telephone cable** into another computer's **HomeLink** port or directly into a phone jack.

Your computer is now connected to your Phoneline network.

- If your computer runs **Windows 98 or ME**, go to page 6 now for instructions on installing your Windows 98 or ME driver.
- If your computer runs **Windows 2000**, go to page 15 now for instructions on installing your Windows 2000 driver.

Windows 98 and ME Installation & Setup

Overview

After physically installing the Phoneline 10M Integrated PC Card in your notebook computer, follow these instructions to install the device driver. The installation procedure for the device driver will vary slightly depending on which version of Windows 98 or ME you are using, and on your current system configuration. Please have your Windows 98 or ME Installation CD or diskettes available during installation. If at any time during the installation you encounter problems, consult the Troubleshooting section.

Installing the Device Driver

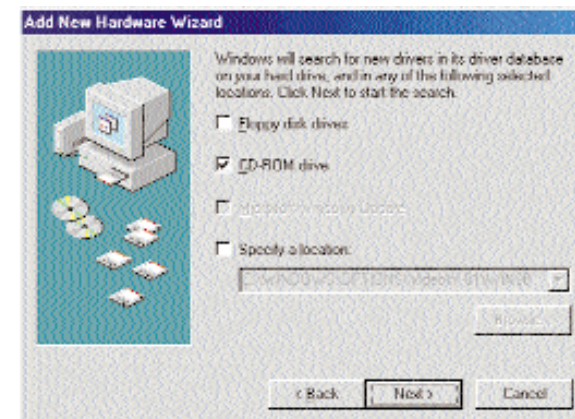
1. If you haven't already, start up your computer.
2. Windows 98 or ME will automatically detect the presence of the Phoneline 10M Integrated PC Card in your computer.
3. When the **Add New Hardware Wizard** window appears, insert the **Phoneline 10M Integrated PC Card Driver** CD into your CD-ROM drive. Click **Next**.



4. Select **Search for the best driver for your device (Recommended)**. Click **Next**.



5. Select "CD-ROM drive". Click **Next** to continue.



6. A window will open saying that Windows is now ready to install the **Linksys Phoneline 10M Integrated PC Card** driver (seen on the next page). Click **Next**.

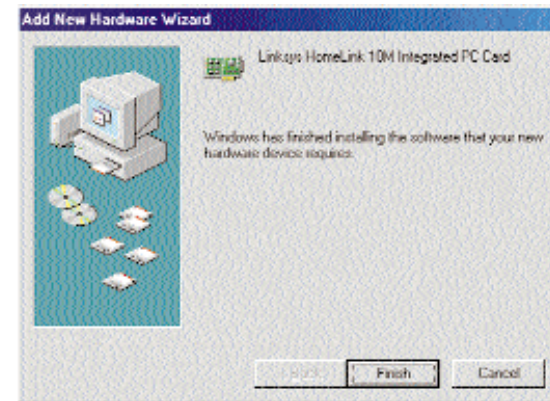


7. Windows will begin copying the PC Card's driver files to your PC. Refer to the chart below to help guide you through the process.

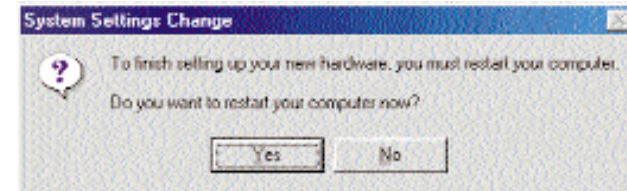
Under no circumstance are you to click Cancel or Skip!

MESSAGE	INSTRUCTIONS
<ul style="list-style-type: none"> If your PC asks for the Linksys Setup or Driver CD 	<ol style="list-style-type: none"> Click OK. Ensure that the Driver CD is in your PC's CD-ROM drive. Type "d:\\" in the "Copy files from:" box. Click OK.
<ul style="list-style-type: none"> If you are asked to supply your Windows 98 Installation Files or Disks 	<ol style="list-style-type: none"> Click OK. If you have a Windows 98 CD-ROM, type "d:\win98" in the "Copy files from:" box, where "d:" is your CD-ROM drive. If you have a Windows ME CD-ROM, type "d:\win9x" in the "Copy files from:" box, where "d:" is your CD-ROM drive. If you don't have a Windows 98 CD-ROM, type: "c:\windows\options\cabs." If you don't have a Windows ME CD-ROM, type: "c:\windows\options\install." Click OK.
<ul style="list-style-type: none"> If you are asked for a file that includes "PCM200HA" in its name 	<ol style="list-style-type: none"> Insert the Driver CD into your PC's CD-ROM drive. Type "d:\\" in the "Copy files from:" box. Click OK
<ul style="list-style-type: none"> If you receive a Version Conflict error 	<ol style="list-style-type: none"> Choose to keep the newest version of the file by clicking Yes.

8. Windows will finish installing the software onto your PC. Click **Finish**.




9. When asked if you want to restart your PC, remove the Driver CD and click **Yes**.



10. If Windows does not ask you to restart your PC, click the **Start** button, choose **Shut Down**, choose **Restart**, then click **Yes**.

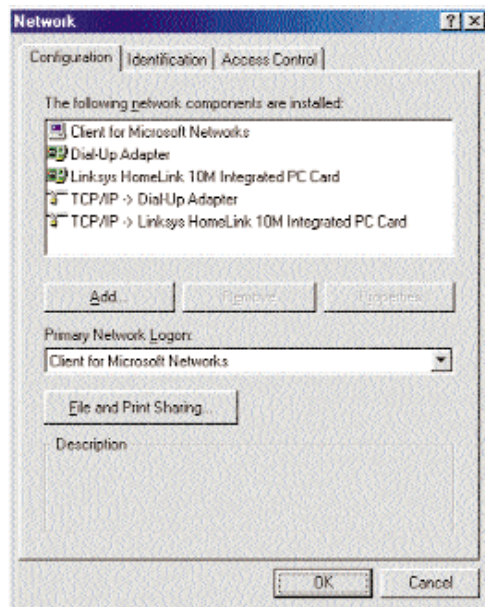
The Windows 98/ME driver installation is complete. Please continue on to the next section, which will provide instructions for configuring Windows 98/ME's network Control Panel. Consult your network administrator for your network configuration information if necessary.



Note: From this point on, you must provide Windows with a User name and Password every time you are prompted to do so. Remember to click **OK** to properly log into Windows. If you click **Cancel** or hit the **Escape (ESC)** key, you will not log into the network.

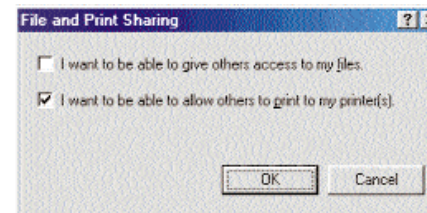
Network Component Configuration for Windows 98 and Millennium

- Once you are back at the Windows desktop, click on **Start**, then **Settings**, then **Control Panel**, and then double-click the **Network** icon.
- The Network window will appear (below). Click on the **Configuration** tab. A window similar to the one below will appear. There may be other components listed in addition to the ones shown below (for example, *Dial-Up Adapter*), which is normal. If any of the components shown below are missing, however, you'll need to manually install them. If that's the case, refer to *Manually Installing the Network Components* in the Appendix now.
 - Client for Microsoft Networks*
 - Dial-Up Adapter*
 - Linksys HomeLink Phonenumber 10M Integrated PC Card*
 - TCP/IP Dial-Up Adapter*
 - TCP/IP Linksys HomeLink Phonenumber 10M Integrated PC Card*

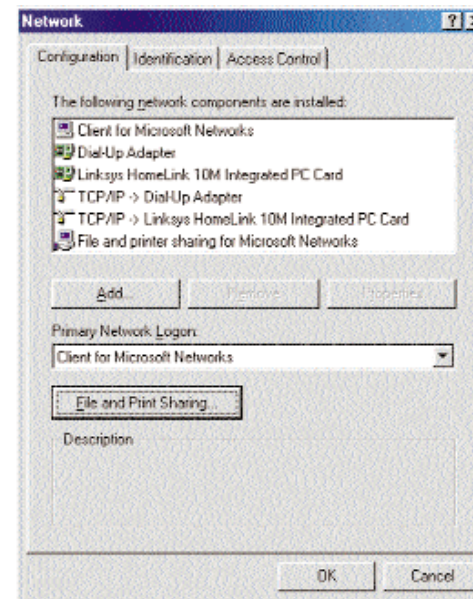


- Click on the **Configuration** tab, followed by the **File and Print Sharing** button. The *File and Print Sharing* window will appear.

- If you'd like others to be able to access the files on your PC's hard drive, select **I want to be able to give others access to my files**.
- If you'd like to share your printer with other users on the network, select **I want to be able to allow others to print to my printer**.

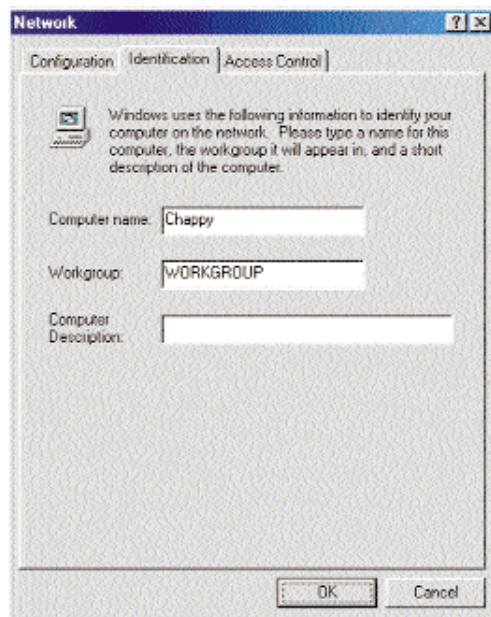


- Click the **OK** button. File and Printer Sharing for Microsoft Networks should now appear in the list of installed components.



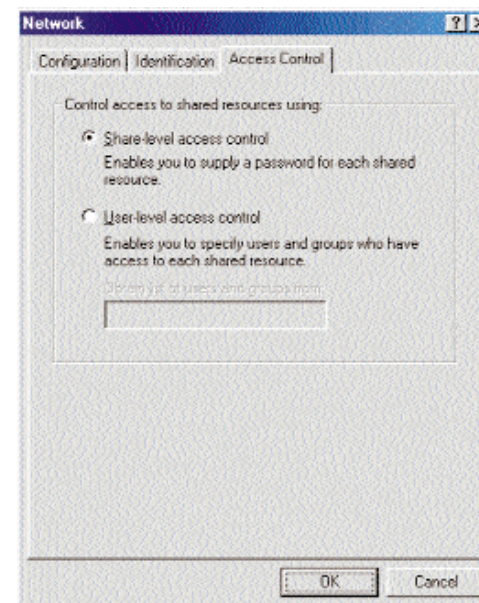
- After ensuring that all of the listed network components are installed on your system, ensure that **Client for Microsoft Networks** is listed in the *Primary Network Logon* box.

8. Click on the **Identification** tab. Type **the name of your computer** in the *Computer Name* box. Choose a name that is unique from the other computer names on the network. Do not click **OK** when you have completed these fields.

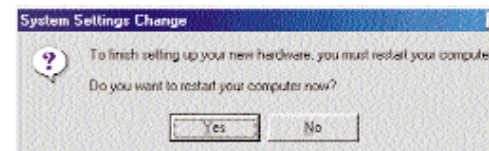


9. Type the **name of your workgroup** in the *Workgroup* box. The Workgroup name should be the same Workgroup Name in use by all of the other PCs on the network. Do not click **OK** when you have completed these fields.
10. Enter a **description of your computer** in the *Computer Description* box. *This box is optional.* Do not click **OK** when you have completed these fields.

11. *Optional:* Choose the **Access Control** tab. Ensure that *Shared-level access control* is selected. If the setting is on User-Level access control and you can't change it, skip to problem 6 in the Troubleshooting section.



12. Click the **OK** button. Your system may or may not ask you for your Windows CD-ROM or the location of the Windows installation files. If you have your Windows 98 CD-ROM, go to D:\win98 (where D: is your CD-ROM Drive) or to C:\windows\options\cabs if you don't. Or, for Windows ME, go to D:\win9x (where D: is your CD-ROM Drive) if you have your Windows CD-ROM, or to C:\windows\options\install if you don't.
13. Once Windows has copied the necessary files, the *System Settings Change* window (see next page) will appear. Remove all disks from your PC and click on **Yes** to restart your PC. If you don't see this window, simply shut down Windows 98 or ME and restart your PC. Remember to remove the driver disk and CD-ROM, if necessary, prior to rebooting.

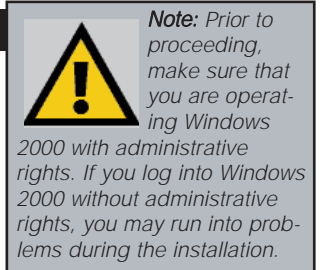


14. A Logon window will appear, requiring you to enter a username and password. Make up a username and password and click **OK**. Do not click the **ESC** or **Cancel** buttons, or you won't be able to log onto the network. If the network logon does not appear or if it does not allow you to log on, refer to problems 4 and 5 in the Troubleshooting section.
15. Once you are at the Windows desktop, double-click on the **Network Neighborhood** icon. You should see an icon for the entire network and the names of the other PCs on the network.
 - **If you can see your computer along with all the other computers on the network in Network Neighborhood, then the Windows network configuration is complete. Continue with *Sharing Your Files and Printers* in the Appendix if you want data from your PC to be available to others on the network. File and Printer Sharing, however, can be configured at a later time.**
 - If you don't see anything at all in Network Neighborhood, press the **F5** key on your keyboard a few times to refresh the screen. If that doesn't work, go to problem 9 of the Troubleshooting section.
 - If you only see your own computer in Network Neighborhood, skip to problem 7 of the Troubleshooting section.
 - If you see all computers on the network except yours press the **F5** key a few times. If, after a minute or so, you still can't see your own PC, see problem 8 of the Troubleshooting section.
 - If you only see computers that are running the same operating system as you and you don't see any others, go to problem 11 of the Troubleshooting section.

Windows 2000 Installation & Setup

Overview

After physically installing the Phoneline 10M Integrated PC Card in your computer, follow these instructions to install the network driver. The installation procedure for the network driver will vary slightly depending on which version of Windows 2000 you are using, and on your current system configuration. If at any time during the installation you encounter problems, consult the Troubleshooting section.



Installing the Driver in Windows 2000

After physically installing the PC Card in your computer, follow these instructions to install the network driver.

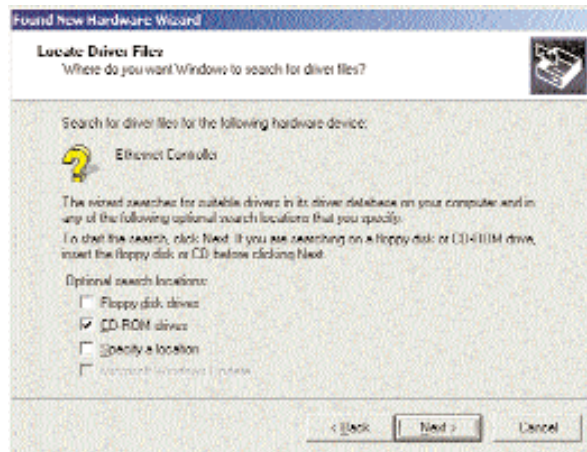
1. **Start your computer** and Windows 2000. Log in if you are asked to with administrator's rights.
2. Windows will display the **Found New Hardware Wizard** box. Click **Next**. Insert the **Linksys HomeLink Phoneline 10M Integrated PC Card Driver CD** into your CD-ROM drive.



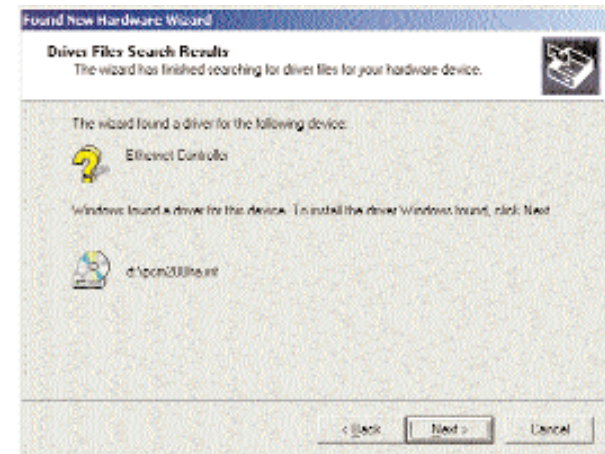
3. The **Install Hardware Device Drivers** dialog box will appear. When **Linksys HomeLink Phoneline 10M Integrated PC Card** is displayed, select “*Search for a suitable driver for my device (Recommended)*”. Click **Next**.



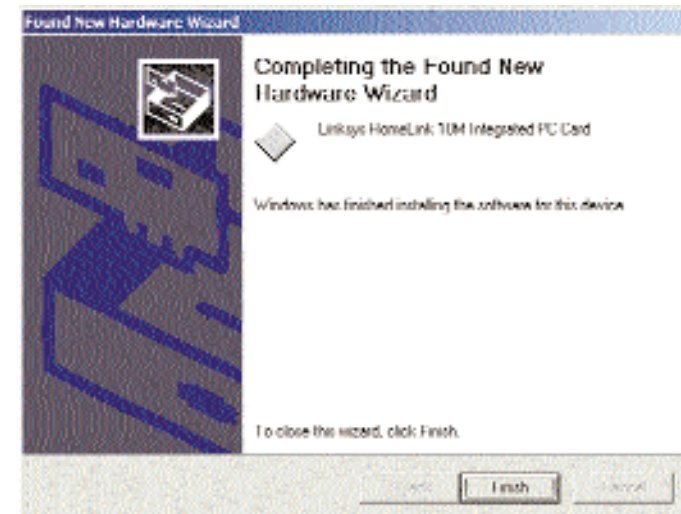
4. The **Locate Driver Files** dialog box will appear. Select the **CD-ROM** drive option. Click **Next**.



5. The **Driver File Search Results** dialog box will appear. Click **Next**.



6. The **Completing the Found New Hardware Wizard** dialog box will appear. Click **Finish**.



7. Remove the CD from the CD-ROM drive. *NOTE: Windows 2000 will not ask require you to restart your computer.*

The Windows 2000 driver installation is complete. If you want to share files or printers, refer to your Windows 2000 documentation or check with your system administrator.

Troubleshooting

1. The HomeLink Phoneline 10M Integrated PC Card does not fit correctly into my PCMCIA slot.
 - Your laptop is not equipped with a 32-Bit Cardbus PC slot.
2. Windows doesn't detect new hardware with the Phoneline PC Card hardware installed, or it continues to detect the card each time you restart your PC.
 - You might not have inserted the PC card correctly or securely into the appropriate slot of your computer. Check that the card is securely inserted into the appropriate slot.
 - Try inserting your card into an alternate PC slot.
 - You may have previously aborted a new hardware setup. Follow the directions on page 23.
 - Your system might not be Plug-and-Play compatible, your PC's Plug-and-Play settings may not be enabled, or your PC may have Plug-and-Play options not supported by Windows 98 or ME. If you are not sure, contact your PC's manufacturer.
3. Windows can't locate the driver for the Phoneline Card device.
 - You may have inserted the wrong CD into your floppy drive.
 - The CD may be defective or files may be missing. Make sure the disk has a few files in d:\ starting with or containing PCM or PCM200.
4. The Windows Logon screen doesn't appear after you restart your computer.
 - Click on **Start, Shut Down**, then select *Log Off*. If this doesn't solve the problem, your PC's manufacturer may have disabled Windows' networking. Contact your computer's manufacturer for help.
5. After entering a username and password, a window appears that reads, "No Domain Server could be found to validate your Username and Password."
 - Click on **Start, Settings, Control Panel**. Double-click on **Network**. Click on the **Configuration** tab. Under The *Following Network Components are Installed* box, highlight *Client for Microsoft Networks* and click on the **Properties** button. Once you are in the *Client For Microsoft Networks Properties* window, make sure that *Log on to Windows NT Domain* is unchecked. Once you have made sure that it is unchecked click on the **OK** button and restart your computer.

6. On the Access Control Tab, User Level Access is selected, but Shared Level Access is grayed out and not accessible.
 - You previously had your primary network logon set to *Client for NetWare Networks*. On the **Configuration** tab of the *Network Properties* window, ensure that your primary network logon is set to *Client for Microsoft Networks*.
 - Your personal web server PC or Microsoft Front Page may require you to choose a user level for security reasons.
7. In Network Neighborhood you can only see your self and no other computers on the network.
 - Make sure that the cables are connected correctly. Make sure you are getting Link or Activity lights on both the Phoneline Card and your hub. Try changing to a new cable that you know is working.
 - Your workgroup name may be different from other computers on your network. Make sure each PC on the network is using the same workgroup name and protocol.
 - Try using the Find Computer function (see problem 11).
8. In Network Neighborhood, you can see all other computers on the network but not yourself, and all other computers can see each other and not your computer.
 - You may have not have enabled File and Printer Sharing. To do so, go to page 21.
 - The network card might not be setup properly. Try reinstalling the card's drivers. To clean your system of the old installation, go to page 23 and then re-install.
9. Network Neighborhood is Empty.
 - Verify that your Microsoft Client is installed. See the Windows 98 or ME setup instructions in this guide for directions. Verify that you have logged in correctly. Refresh the screen by pressing **F5** several times.
10. You receive DHCP Errors in Windows.
 - If you are connecting to a DHCP server, check your cabling and connection. If you require TCP/IP to be configured, check with your network administrator or your Windows documentation for proper settings.
 - If you don't have a DHCP server on your network and your network setup doesn't require TCP/IP, you may remove the TCP/IP component from Windows' networking. To do this, click on **Start, Settings, Control Panel**, then double-click on **Network**. Click once on the **component entry** with the words *TCP/IP* and *Linksys* or *TCP/IP* on its own, then click on the **Remove** button. Click **OK** when finished and restart your PC.

11. In Network Neighborhood you can only see computers running the same operating system as your computer (i.e., your PC is running Windows 98 and it can only see other Windows 98 computers and not any computer running Windows 2000).
- Choose **Start, Find, Computer** and type the name of the computer in the window that comes up and click **Find Now**.
 - Now make sure that you are using the same protocol(s) and workgroup name on the 98 and 2000 computers. To do this, click **Start, Settings, Control Panel** on two computers running different Windows operating systems. Click on the **Network** icon, choose the **Configuration** tab, then click on the **Identification** tab for Workgroup name. Compare the protocols on both computers and make sure that they are the same. If any protocols are missing, refer to page 29 to install any needed protocol(s).
 - If all computers are using the same protocol(s) and Workgroup name, and Windows 98 computers can't see Windows 2000 computers, enable NetBIOS on all the computers using Windows 98 and 2000. Follow these instructions:
 - The IPX/SPX-compatible protocol should be installed on all Windows computers (see page 29 if you need to add this protocol). Bring up the properties of the IPX/SPX-compatible protocol by clicking on **Start, Settings, Control Panel**, then double-click the **Network** icon. Choose the **Configuration** tab and highlight *IPX/SPX-compatible Protocol*. Click on **Properties**. Now, to install NetBIOS, click on the **NetBIOS** tab. Put a check next to *I want to enable NetBIOS over IPX/SPX*. Click **OK**, then **OK** again. Windows will copy the appropriate files to your computer. When asked to restart your PC, remove any floppy disks and click **OK**. Be sure to do this on all of your computers that are having trouble seeing your entire network.

Appendix

Sharing Your Files and Printers

Overview

By sharing your files and printers, other PCs on your network will be able to access the resources on your PC.

Before sharing your files and printers, you should prepare your computer to be used with any file servers that may be on the network. If you are **not** using Windows 98 or ME with an NT, 2000, or NetWare file server, or if you are not sure if you have a file server, continue below.

Enabling File Sharing

1. Double-click your **My Computer** icon. A window of available disk drives will appear.
2. Using your right mouse button, click once on the drive or folder that you want to make available to other users.
3. Click on **Sharing**, followed by the **Sharing** tab. Click on **Share As**.
4. In the Share Name box, enter a name for the drive or folder you are sharing. This can be any drive on your PC—floppy drive, hard drive, CD drive, zip drive, etc.
5. Decide on the type of access that you want to give other users.
 - **Read-Only access** allows other users to view the files on the selected drive.
 - **Full access** allows other users to create, change, or delete files on the selected drive.
 - **Depends on Password** allows other users to have Read-Only and/or Full access to the selected drive, depending on the password that you decide to give them.
6. If you want to assign access passwords, type the passwords into the Password boxes.

Note: If you are only using your PC to access the Internet, it is highly recommended that you create passwords for your shares.

7. When you're done, click on the **Apply** button, followed by **OK**. Repeat steps 1-7 for any drive or folder you desire to share on the network.

You have successfully enabled File Sharing on your PC. Your selected drives or folders can now be accessed by other network users. If a user tries to access one of your password-protected drives or folders, he or she will be asked for the appropriate Read-Only or Full-Access password. Continue on if you wish to share your PC's printer over the network.

Enabling Printer Sharing

1. Double-click on the **My Computer** icon.
2. Double-click the **Printers** folder. A window of available printers will appear.
3. Using your right mouse button, click once on the printer that you want to share with other users. Click on **Sharing**, followed by the **Sharing** tab.
4. Click on **Share As**. In the Share Name box, give a name to the printer you want to share. If you want to assign a password to the printer so that only certain users can access it, type a password in the Password box.
5. Click on the **Apply** button, followed by **OK**. Your printer(s) are now shared.

Note: Any printer you wish to share from your PC must be physically connected to your PC.

Note: Not all printers may be shared on the network. Others may require special instructions. Refer to your printer's user guide or contact your printer manufacturer if you think this may be the case with your printer.

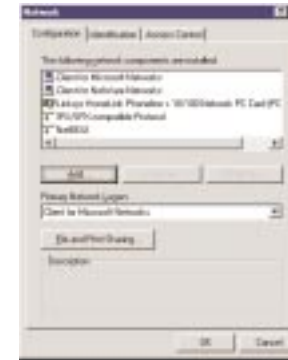
The Printer Sharing setup and installation is complete. Your printer can now be accessed by other network users. The printer's driver may have to be installed on other PCs. Consult your printer's documentation.

Starting Over in Windows 98, ME, or 2000

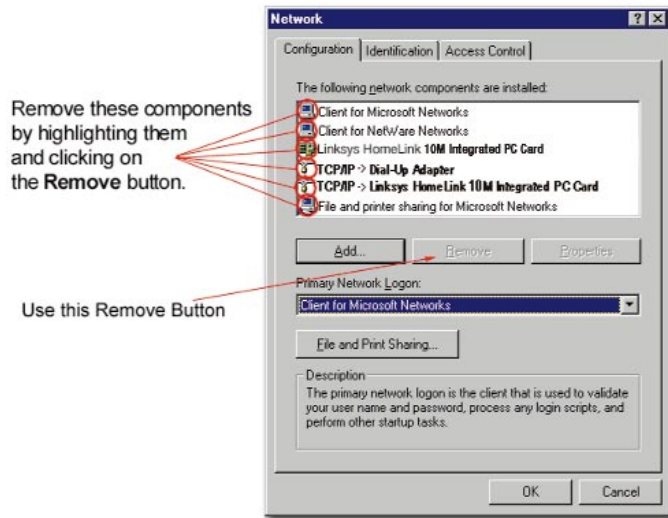
The following instructions are for Windows 98 or ME. To start over in Windows 2000, go to page 27.

Starting Over in Windows 98 or ME

1. At the desktop click on the **Start** Button, highlight **Settings**, click on **Control Panel**.
2. Double-click on the **Network** Icon.
3. If the Configuration box has a component called Dial-Up Adapter, skip forward to step 5. If it doesn't, continue with step 4.

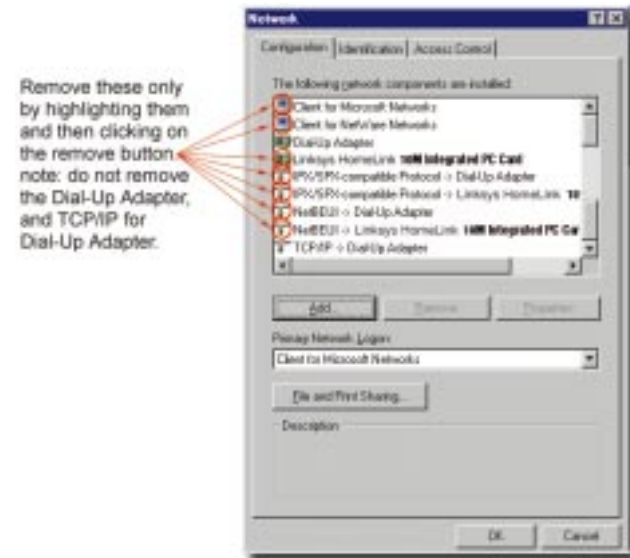


4. Remove any instance of the name Linksys in the box. This includes *IPX/SPX...Linksys*, *NetBEUI...Linksys*, and *TCP/IP...Linksys*. Also remove *Client for Microsoft Networks*, *Client for NetWare Networks*, and *File and Printer Sharing for Microsoft Networks*.

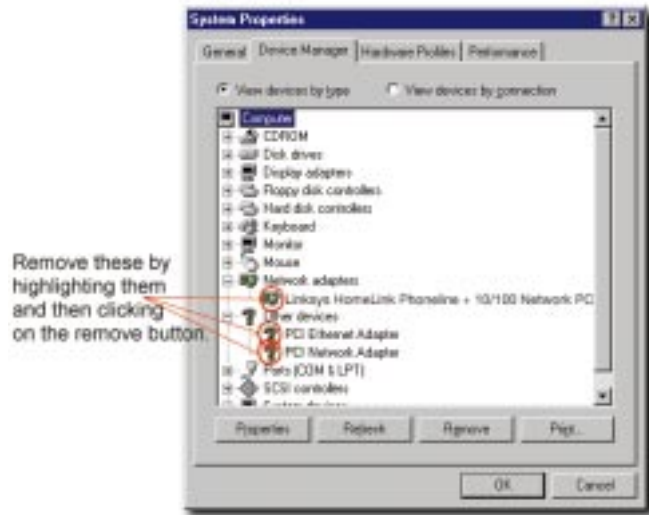


In some cases, removing one of these components may in turn automatically remove other components as well. If this happens, skip ahead to step 6.

5. For PCs with Dial-Up Networking and/or an AOL adapter, remove any instance of the name Linksys, all IPX/SPX protocols, all NetBEUI, all Clients, and File and Printer Sharing for Microsoft Networks. Do **not** remove *Dial-Up Adapter*, *AOL Adapter*, *TCP/IP-Compatible Protocol-AOL Adapter* or *TCP/IP-Compatible Protocol-Dial-Up Adapter*.



6. When you have completed the removal of all unnecessary components, click **OK**. When asked to restart, click **No**.
7. Return to the Windows **Control Panel**. Double-click on the **System** Icon. The **System Properties** window will appear. Click on the **Device Manager** Tab.
8. Scroll down to the **Network Adapters** listing and expand it by clicking on the **plus** [+] sign.



9. Remove all devices with the name *Linksys* in its description. (If at any point you are asked to restart the computer, Click **No**).
10. Scroll down to the **Other Devices** listing. Click the **plus** [+] sign. Remove *PCI Ethernet Controller* or *PCI Ethernet Adapter*. (If Other Devices is not listed, proceed to the next step.)
11. Click the **Close** button, shut down Windows, and restart your computer.
12. After your computer has restarted, turn to page 6 for Windows 98 or Millennium setup instructions.

Starting Over in Windows 2000

1. Click the **Start** button, choose **Settings**, choose **Control Panel**, then double-click the **System** icon. The **System Properties** window will open.
2. Choose the *Hardware* tab.
3. Click the *Device Manager* button. The *Device Manager* window will open.

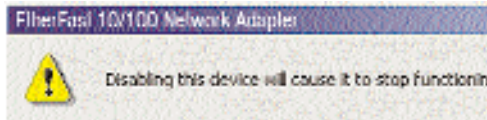


4. Click the plus sign (+) beside *Network Adapters*. The *HomeLink Phoneline 10M Integrated Adapter* listing should appear.

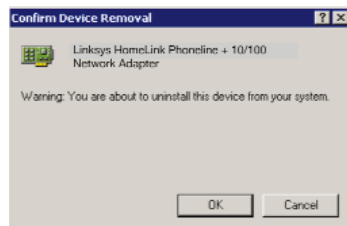
5. Right-click on *HomeLink Phoneline 10M Integrated Adapter*. A pop-up menu should open (below).



6. First, choose **Disable**.
7. When asked if you want to Disable the device, click **Yes**.



8. Right-click on the *HomeLink Phoneline 10M Integrated Adapter* again. This time, select **Uninstall**. Click **OK**.



9. The *Network Adapters* category should be removed from the *Device Manager* listing.
10. Click the **OK** button, and restart your computer.

Manually Installing Network Components in Windows 98 or Millennium

There may be times when you will need to manually install missing Windows networking components.

1. Click on **Start, Settings, then Control Panel**.
2. Double-click the **Network** icon. The Network window appears.
3. Click the **Configuration** tab. Make sure that the following network components are installed.
 - *Client for Microsoft Networks*
 - *Dial-Up Adapter*
 - *Linksys HomeLink Phoneline 10M Integrated PC Card*
 - *TCP/IP Dial-Up Adapter*
 - *TCP/IP Linksys HomeLink Phoneline 10M Integrated PC Card*

There may be other components listed in addition to the ones shown above. If any of the above components are missing, add them as follows.

Client for Microsoft Networks

If you plan on connecting to an NT or 2000 file server or peer-to-peer network, click the **Add** button. Highlight *Client* and click **Add**. Choose **Microsoft** as the manufacturer in the *Network Client* box. Highlight *Client for Microsoft Networks* and click **OK**. Click **OK** again if you are done adding components; otherwise, continue adding the components you need. The computer will begin copying files to your system. When the installation is complete, you will be asked if you want to reboot. Click **OK**.

IPX/SPX-compatible Protocol

Click the **Add** button. Choose *Protocol* and click the **Add** button. Select *Manufacturer* and choose **Microsoft**. Under the *Network Protocol* box, highlight *IPX/SPX-compatible protocol*. Click **OK**. Click **OK** again if you are done adding components; otherwise, continue adding the components you need. The computer will begin copying files to your system. When the installation is complete, you will be asked if you want to reboot. Click **OK**.

NetBEUI

Click the **Add** button. Select *Protocol*, then click **Add**. Under *Manufacturer*, highlight **Microsoft**. Under *Network Protocol*, highlight **NetBEUI**. Click **OK**. Click **OK** again if you are done adding components; otherwise, continue adding the components you need. The computer will begin copying files to your system. When the installation is complete, you will be asked if you want to reboot. Click **OK**.

TCP/IP

Click the **Add** button. Select *Protocol*, then click **Add**. Under *Manufacturer*, highlight **Microsoft**. Under *Network Protocol*, highlight **TCP/IP**. Click **OK**. Click **OK** again if you are done adding components; otherwise, continue adding the components you need. The computer will begin copying files to your system. When the installation is complete, you will be asked if you want to reboot. Click **OK**.

Modem and Fax Compatibility

If you want to have a phoneline network and a phone in one room with just one phone jack, you can still attach your phone or fax to the jack by using a telephone jack splitter.

Plug your telephone or fax machine into one of the splitter's ports, and your HomeLink Phoneline 10M Integrated PC Card into the other.

Specifications

Model Number:	PCM200HA
Bus Type:	32-Bit Cardbus
Standards:	HPNA 1.0, 1.1, &2.0 Compatible
Ports:	Two RJ-11 Standard Modular Telephone Ports (Phone, HomeLink)
Speed:	Up to 10Mbps
Cabling:	Standard Modular Telephone Cable (with RJ-11 connectors)
Topology:	Daisy Chain
LED Status Lights:	Link, Rx, Tx

Environmental

Power:	3V DC, 180mA, 30mA Sleep Mode
Dimensions:	4.7" x 2.6" x 0.75"
Unit Weight:	1.8 oz.
Certifications:	FCC Class B, CE Mark Commercial
Operating Temperature:	32°F to 122°F (0°C to 50°C)
Storage Temperature:	-4°F to 158°F (-20°C to 70°C)
Operating Humidity:	10% to 85% Non-Condensing
Storage Humidity:	5% to 90% Non-Condensing

Warranty Information

BE SURE TO HAVE YOUR PROOF OF PURCHASE AND A BARCODE FROM THE PRODUCT'S PACKAGING ON HAND WHEN CALLING. RETURN REQUESTS CANNOT BE PROCESSED WITHOUT PROOF OF PURCHASE.

IN NO EVENT SHALL LINKSYS' LIABILITY EXCEED THE PRICE PAID FOR THE PRODUCT FROM DIRECT, INDIRECT, SPECIAL, INCIDENTAL, OR CONSEQUENTIAL DAMAGES RESULTING FROM THE USE OF THE PRODUCT, ITS ACCOMPANYING SOFTWARE, OR ITS DOCUMENTATION. LINKSYS DOES NOT OFFER REFUNDS FOR ANY PRODUCT.

LINKSYS OFFERS CROSS SHIPMENTS, A FASTER PROCESS FOR PROCESSING AND RECEIVING YOUR REPLACEMENT. LINKSYS PAYS FOR UPS GROUND ONLY. ALL CUSTOMERS LOCATED OUTSIDE OF THE UNITED STATES OF AMERICA AND CANADA SHALL BE HELD RESPONSIBLE FOR SHIPPING AND HANDLING CHARGES. PLEASE CALL LINKSYS FOR MORE DETAILS.

Contact Information

For help with the installation or operation of this product, contact Linksys Customer Support at one of the phone numbers or Internet addresses below.

Sales Information	800-546-5797 (LINKSYS)
Tech Support	800-326-7114
RMA Issues	949-261-1288
Fax	949-261-8868
Email	support@linksys.com
Web	http://www.linksys.com
FTP Site	ftp.linksys.com



<http://www.linksys.com>

© Copyright 2001 Linksys, All Rights Reserved.
Printed in the USA.