

Quick start guide

EN	Quick start guide	1
FR	Guide de démarrage rapide	11
ES	Guía de inicio rápido	21
DE	Kurzanleitung	31
IT	Guida di riferimento rapido	41



- 1 Connect
- 2 Install
- 3 Enjoy

PHILIPS

Need help?

Look up our Support Centre website

www.philips.com/support

or

Call our Customer Care helpline in your country

Besoin d'aide ?

Visitez la page Web de notre centre d'assistance à l'adresse

www.philips.com/support

ou

Appelez le centre client de votre pays

¿Necesita ayuda?

Consulte nuestra página Web de Soporte técnico,

www.philips.com/support

o

Llame a nuestra Línea de atención al cliente de su país

Support?

Besuchen Sie unser Support Center auf

www.philips.com/support

oder

wenden Sie sich einfach an den telefonischen Kundendienst
Ihres jeweiligen Landes

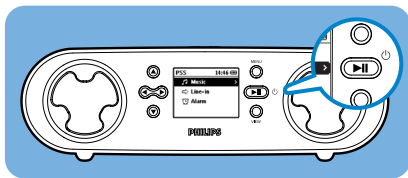
Country	Helpdesk	Tariff / min	Keep ready
Europe			
Austria	0820 901115	€0.20	Das Kaufdatum. Modellnummer und Serial nummer
Belgium	070 253 010	€0.17	La date d'achat la référence et le numéro de série du produit
Denmark	3525 8761	Lokal tarif	Indkøbsdato, type-, model- og serienummer
Finland	09 2290 1908	Paikallinen hinta	Ostopäivä ja tarkka mallinumero ja sarjanumero
France	08 9165 0006	€0.23	La date d'achat la référence et le numéro de série du produit
Germany	0180 5 007 532	€0,12	Das Kaufdatum. Modellnummer und Serial nummer
Greek	0 0800 3122 1223	1 αστική μονάδα	Την ημερομηνία αγοράς και τον ακριβή κωδικό μοντέλου και τον αριθμό σειράς του προϊόντος σας
Ireland	01 601 1161	Local tariff	Date of Purchase. Model number and Serial number
Italy	199 404 042	€0.25	La data di acquisto, numero di modello e numero di serie
Luxemburg	26 84 30 00	Tarification locale	La date d'achat, la référence et le numéro de série du produit
Netherlands	0900 0400 063	€0.20	De datum van aankoop, modelnummer en serienummer
Norway	2270 8250	Lokal tarif	Datoen da du kjøpte produktet & modellnummer & serienummeret
Portugal	2 1359 1440	Preço local	A data de compra, número do modelo e número de série
Spain	902 888 785	€0,15	Fecha de compra y número del modelo y número de serie
Sweden	08 632 0016	Lokal kostnad	Inköpsdatum, modellnummer och serienummer
Switzerland	02 2310 2116	Ortstarif	Das Kaufdatum. Modellnummer und Serial nummer
UK	0906 1010 017	£0.15	Date of Purchase, Model number and Serial number
North America			
Canada	1-800-661-6162 (Francophone) 1-888-744-5477 (English / Spanish)	Free	Date of Purchase, Model number and Serial number
USA	1-888-744-5477	Free	Date of Purchase, Model number and Serial number
South America			
Argentina	11 4544 2047	Tarifa local	Fecha de compra y número del modelo y número de serie
Brazil	0800 701 02 03 (Except Sao Paulo) 2121 0203 (Sao Paulo)	Grátis Preço local	A data de compra, número do modelo e número de série
Chile	600 744 5477	Tarifa local	Fecha de compra y número del modelo y número de serie
Mexico	01 800 504 6200	Gratis	Fecha de compra y número del modelo y número de serie
Asia			
China	4008 800 008	本地费率	购买日期、型号及序号
Hong Kong	2619 9663	本地费率	購買日期、型號及序號
Korea	02 709 1200	관세	구매일자, 모델 번호, 시리얼 번호

- 2 Getting started with ShoqBox
- 2 Registration
- 3 Is there a manual?
- 3 Don't forget about upgrades
- 3 Accessories
- 4 Overview of controls and connections
- 6 Basic first steps
 - 6 Connect
 - 7 Install
 - 9 Enjoy
- 10 Troubleshooting
- 10 Need Help?
- 10 Disposal of your old product

Getting started with ShoqBox

Please take some time to read this before using your ShoqBox. We hope you enjoy your ShoqBox.

Press and hold **▶||** for 2 seconds to power on/off ShoqBox.



Try out all the functions of your ShoqBox:

- **Music** playback. Remember to use **Windows Media Player 10** to transfer your music from your computer to ShoqBox (for details regarding music transfer, please refer to your user manual on the by-packed CD-ROM)
- **Line-in** mode to play your favorite external audio sources, like music from your laptop or other digital audio player.
- **Alarm**. Wake up your way to alarm buzzer or to your favorite music.

Remember to set your time and alarm using the **MENU** options.

Registration

Since it is possible for you to upgrade your product, we recommend that you register your product on www.philips.com/register so we can inform you as soon as new free upgrades become available.

Is there a manual?

You have a detailed user manual and FAQ on the CD by-packed with your ShoqBox. Spend some time with it to know all the features available. You can also download the same file from this website: www.philips.com/support

Don't forget about upgrades

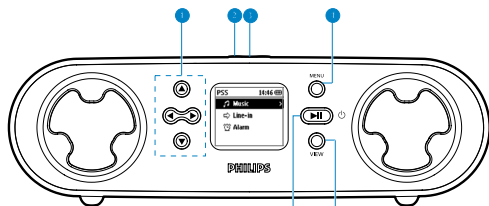
We know you will enjoy your product for a long time. For best performance, we recommend that you regularly check in to www.philips.com/support for free upgrades of the latest software and Device Manager for your product. These downloads will help you to optimize your product's performance and to take advantage of our future support of new audio formats. Enjoy your new music experience.

Accessories

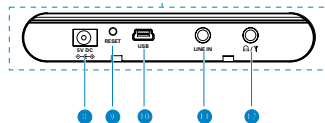
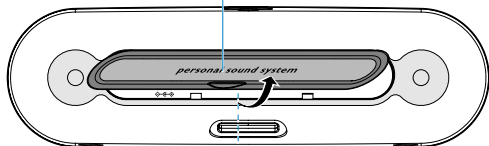
- 1 x multi-voltage 5V AC/DC power adapter/charger
- 1 x travel case to protect your ShoqBox
- 1 x line-in cable to connect ShoqBox to any audio source, like your laptop
- 1 x USB cable to connect ShoqBox to your PC
- 1 x CD-ROM with Windows Media Player, Philips Device Manager and user manuals







Overview of controls and connections

Front panel view



Rear panel view



1	Navigation	   	Scroll up / Previous / Fast rewind Scroll down / Next / Fast forward Back to previous level Go to next level
2	Volume controls	+ -	Increase volume Decrease volume
3	Bass boost	DBB	Enables or disables Dynamic Bass Boost to enhance bass tones
4	MENU	MENU	Access sub-menu of the current selection for more options
5	POWER / PLAY / PAUSE	▶▶	Press and hold for 2 seconds to power on / off ShoqBox, Play / Pause
6	VIEW	VIEW	Toggles between Root menu and music playback screen / current navigation screen
7	Connections cover		
8	5V DC		Charger /adapter connection for power supply
9	Reset opening		Press here using a pin if the ShoqBox "hangs" or "freezes". Note: your music content will not disappear.
10	USB		USB connector for USB2.0 transfers music files from the PC to ShoqBox
11	Line in		3.5mm socket for line-in audio cable: connects to LINE OUT / headphone socket of your laptop or auxiliary equipment
12	Headphone socket	 / 	3.5mm jack for headphones (not included) FM antenna socket (Not applicable to PSS231)

Charging

- ① Connect the supplied multi-voltage adaptor/charger to your ShoqBox by plugging it into the 5V DC connector at the back of your product under the ShoqBox back cover and then plug the other end into a standard mains power outlet.
- ② The battery will be fully charged in 4 hours when charging it for the first time and 70% charged in 1 hour for quick charge.

Note: Rechargeable battery has a limited number of charge cycles and may eventually need to be replaced by the Philips service center. Battery life and number of charge cycles vary by use and settings.

When the battery is nearly empty, you will hear beep sounds and see the battery low screen.

If you do not charge your ShoqBox at this point, the player will automatically switch off.

It may take a few minutes for charging indication to appear if your battery has been fully depleted.

2 Install

A Installing software

IMPORTANT!

Always install the software from the CD even if you may have **Windows Media Player**. Any additional utility applications (for example to upgrade and repair your player) will otherwise not be installed.

What you need before software installation:

- PC with Windows XP (SP1 or above)
 - Internet connection with Microsoft Internet Explorer 6.0 or higher
 - CD-ROM drive
 - USB port
 - 500 MB hard disk space recommended
- ① Insert the CD supplied with your product into the CD ROM drive of your PC.
 - ② Follow the onscreen instructions to complete the installation of **Windows Media Player** and **Philips Device Manager**.
 - ③ You may need to restart your PC after software installation.
 - ④ If the installation program does not start automatically, browse the CD contents via Windows Explorer and run the program by double clicking on the file ending with .exe.

Lost your CD? Don't worry, you can download the CD contents from www.philips.com/support or www.usasupport.philips.com (for U.S. residents).

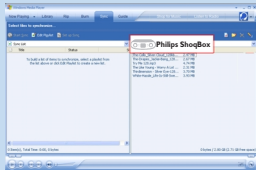
B Connecting your ShoqBox to the PC via the USB port

Open the connections cover at the back of your ShoqBox. Connect the included adapter to your ShoqBox and to the main power supply. Connect the smaller end of your USB cable to your ShoqBox and the bigger end to your computer's USB port.

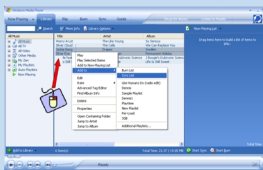


Your ShoqBox will be recognized by your computer and is ready for music transfer.

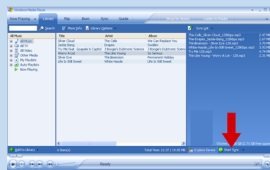
C Transferring music



Start **Windows Media Player**. Select **Sync** tab. In the pull down menu on the right pane, select **Philips** or **Philips ShoqBox** as the destination.



Select **Library** tab. Click to highlight the song you want to copy. Drag and drop the song into the Sync List on the right pane.



Click **Start Sync** button at the bottom of the screen to start synchronization.

3 Enjoy

A Powering on / off

Power on: Press and hold **▶||** for 2 seconds to power on ShoqBox

Power off: Press and hold **▶||** again

Note: Your device automatically powers down if there is no operation and no music played for 10 minutes.



B Select a music track to play


Use the navigation keys to the left of the display to select a song for playback.

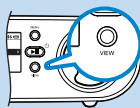
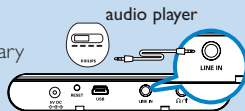
Play a song by pressing **▶||**. Press the same key to pause the music.

As with most digital audio players, there is no stop key.

C Line-in mode: for playback of external sources

You can use your ShoqBox to act as a powerful mini speaker:

- 1 Connect the included audio cable between **LINE IN** on ShoqBox to the **LINE OUT** /  connection on your auxiliary equipment.
- 2 On ShoqBox, press **VIEW** and select line-in to enter the Line in mode.
- 3 Operate the controls on your auxiliary equipment to playback.
- 4 Adjust the volume on both ShoqBox and your device.



VIEW



Troubleshooting

Please refer to the FAQ on www.philips.com/support or the Troubleshooting section of the ShoqBox user manual of the CD by-packed with your ShoqBox.

In rare cases, your player may "FREEZE". Don't panic, just insert a pencil or pin into the **RESET** hole located on the back of ShoqBox and press and hold the pin until the device shuts down. Then press power to restart. The available content on your player will not be erased.

If nothing happens, recharge the battery for at least 4 hours and try to switch on or reset again. If this does not work, you might have to repair your player with **Philips Device Manager**.

It may take a few minutes for charging indication to appear if your battery has been fully depleted.

Need Help?

User Manual

Refer to the User Manual on the CD.

Online Help

www.philips.com/support

Disposal of your old product

Your product is designed and manufactured with high quality materials and components, which can be recycled and reused.



When this crossed-out wheeled bin symbol is attached to a product it means the product is covered by the European Directive 2002/96/EC

Please inform yourself about the local separate collection system for electrical and electronic products.

Please act according to your local rules and do not dispose of your old products with your normal household waste. The correct disposal of your old product will help prevent potential negative consequences for the environment and human health.



 Be responsible
Respect copyrights

Printed in China

Specifications are subject to change without notice.
Trademarks are the property of Koninklijke Philips Electronics N.V.
or their respective owners
2005 © Koninklijke Philips Electronics N.V. All rights reserved.

www.philips.com
wk6092

