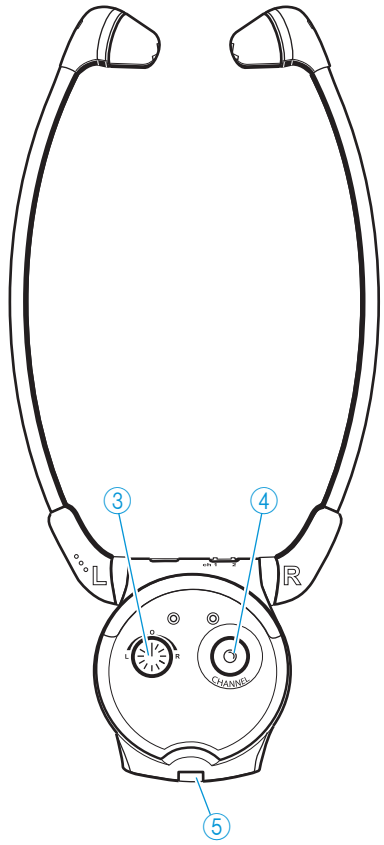
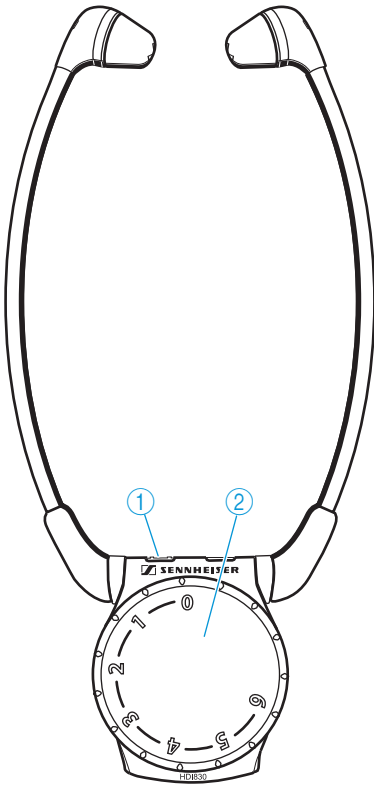


# Infrared Receiver HDI 830





# Contents

<b>Safety instructions</b> .....	2
<b>The HDI 830 receiver</b> .....	4
<b>Delivery includes</b> .....	4
<b>Product overview</b> .....	4
<b>Using the HDI 830</b> .....	5
Switching the receiver on/off .....	5
Setting the receiver to the frequency of the transmission system .....	6
Adjusting the balance .....	6
Replacing and charging the rechargeable battery .....	7
<b>Cleaning and caring for the HDI 830</b> .....	8
Cleaning the receiver .....	8
Cleaning the earpads .....	8
<b>If a problem occurs...</b> .....	9
<b>Accessories and spare parts</b> .....	10
<b>Specifications</b> .....	11
<b>Manufacturer Declarations</b> .....	12

# Safety instructions

- Read this instruction manual carefully and in full before using the device.
- Make this instruction manual easily accessible to all users at all times. Always include this instruction manual when passing the device on to third parties.
- Do not use the device in situations which require special attention (e.g. when performing skilled jobs).
- Always keep the device dry and do not expose it to extreme temperatures.
- The headphones generate magnetic fields, which can be hazardous to people who have pacemakers or implanted defibrillators. Keep connected headphones at least 1.2" (3 cm) away from cardiac pacemakers and implanted defibrillators.
- Use the device with care and store it in a clean, dust-free environment.
- This receiver allows you to set higher volumes than conventional headphones. This can cause hearing damage in persons with healthy hearing and especially in children.

## Proper use of the device

Proper use includes:

- using the device for professional purposes,
- having read this instruction manual, especially the "Safety instructions" section,
- using the device within the operating conditions and limitations described in this instruction manual.

"Improper use" means using the device other than as described in this instruction manual, or under operating conditions which differ from those described herein.

## Safety instructions for the lithium polymer rechargeable battery

The BA 300 battery is a lithium polymer rechargeable battery. If abused or misused, this rechargeable battery may be damaged. Please understand that Sennheiser does not accept liability for damage arising from abuse or misuse.

### WARNING!



In extreme cases, the rechargeable battery may even present a

- heat hazard
- fire hazard
- explosion hazard
- smoke or gas hazard



Do not heat above 70°C/158°F, e.g. do not expose to sunlight or throw into a fire.



Do not expose to moisture.



Do not short-circuit.



Do not mutilate or dismantle.



Store the devices/ rechargeable batteries in a cool and dry place at room temperature.



Charge rechargeable batteries only with the appropriate Sennheiser charger.



When not using the rechargeable battery for extended periods of time, charge it regularly (every six months for about one hour).



Charge rechargeable batteries only at ambient temperatures between 10°C/50°F and 40°C/104°F.



Do not charge the rechargeable battery if the device is obviously defective.



Return defective devices or devices with defective batteries to your specialist dealer.

## The HDI 830 receiver

The HDI 830 receiver can be used together with infrared transmission systems which operate on a carrier frequency of 2.3 or 2.8 MHz. For charging the receiver, use the L 300 10-10 charger (see "Accessories and spare parts" on page 10).

## Delivery includes

Delivery of the HDI 830 includes:

- 1 HDI 830 receiver with BA 300 lithium-polymer rechargeable battery
- 2 pairs of spare earpads
- 1 instruction manual
- 1 quick start guide for display at the receiver counter

## Product overview

There is an image providing an overview of the receiver on the inside cover of this instruction manual.



### Overview of receiver

- |                     |                            |
|---------------------|----------------------------|
| ① Channel indicator | ④ Channel selection button |
| ② Volume control    | ⑤ Battery compartment      |
| ③ Balance control   |                            |

# Using the HDI 830

## Switching the receiver on/off

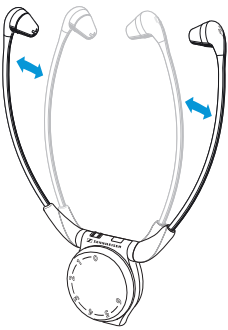
### CAUTION!



### Hearing damage due to high volumes!

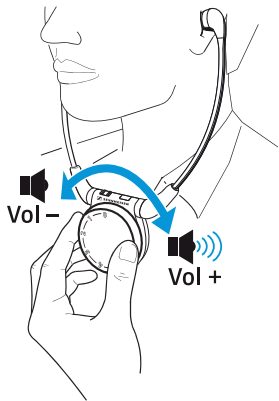
This receiver allows you to set higher volumes than conventional headphones. This can cause hearing damage in persons with healthy hearing and especially in children.

- ▶ Set the volume on the receiver to a low value.
- ▶ Do not continuously expose yourself to high volumes.



### Switching the receiver on and off

- ▶ Pull the earbows of the receiver apart. The receiver switches on automatically.
- ▶ Take the receiver off. The receiver switches off automatically after 30 seconds.



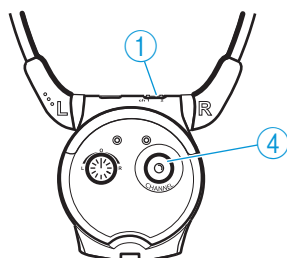
### Adjusting the volume

- ▶ Use the volume control ② to adjust the volume to a sufficient and comfortable level.

## Setting the receiver to the frequency of the transmission system

You can set the receiver to the frequency of the transmission system yourself or have the frequency preset by your Sennheiser partner.

To set a frequency **on the receiver**:



- ▶ Put the receiver on.
- ▶ Press the channel selection button (4) until you have found the frequency of your transmission system.

On the receiver, the channel indicator (1) can light up as follows:

Channel indicator lit	Frequency	You hear the sound in
	2.3 + 2.8 MHz	stereo
	2.8 MHz	mono

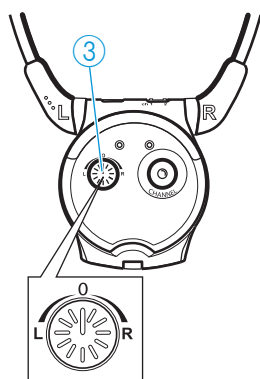
### Note:

The channel indicator (1) goes off after 30 seconds.

To set a **fixed frequency** and to deactivate the channel selection button (4):

- ▶ Contact your Sennheiser partner.

## Adjusting the balance



The balance control allows for right/left balance adjustment. Adjust the balance so that you can hear equally well with both ears.

- ▶ Turn the balance control (3) to the left **L** or right **R** to increase the volume for the corresponding ear.



## Replacing and charging the rechargeable battery

- ▶ Charge the rechargeable batteries in the charging compartment of the L 300 10-10 charger.

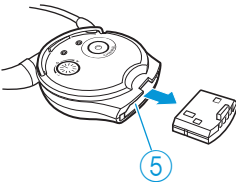
For further information on the features and functions of the charger, please refer to the instruction manual of the L 300 10-10 charger.



- ▶ Before using the rechargeable batteries for the first time, charge them **for about three hours**.
- ▶ After use, place the receiver back into the charging compartment of the L 300 10-10 charger.  
The receiver switches off automatically.

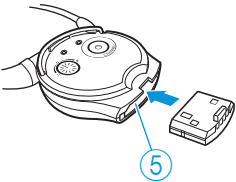
When the rechargeable battery is discharged, you can continue to use the receiver with an optional spare rechargeable battery:

- ▶ Remove the discharged battery from the receiver and charge it in the L 300 10-10 charger.



To remove the discharged battery from the receiver:

- ▶ Pull the battery out of the receiver's battery compartment ⑤.



To insert the receiver's battery:

- ▶ Insert the battery into the receiver as shown.
- ▶ Slide the battery into the battery compartment ⑤ as far as it will go.

### Notes:

- With a fully charged rechargeable battery, the **operating time is up to 12 hours**.
- Always store the receiver in the L 300 10-10 charger to ensure that it is fully charged. The intelligent battery charging technology prevents overcharging.
- Do not store the receiver on a glass dummy head, chair armrest, or similar for long periods of time as this can reduce the contact pressure of the earbows. Furthermore, with the earbows pulled apart, the receiver remains switched on.

# Cleaning and caring for the HDI 830

## Cleaning the receiver

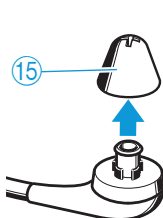
**CAUTION!**



- Liquids can damage the electronics of the device. Liquids entering the housing of the device can cause a short circuit and damage the electronics.
- ▶ Keep all liquids far away from this device.
  - ▶ Do not use any cleaning agents or solvents.

- ▶ Clean your receiver using only a slightly damp cloth.

## Cleaning the earpads



- ▶ Carefully remove the earpads 15 from the receiver.
- ▶ Clean the earpads 15 using warm soapy water or an ultrasound cleaning device and rinse thoroughly.
- ▶ Dry the earpads 15.

- ▶ Put the earpads back on the receiver.

**Note:**

For reasons of hygiene, you should replace the earpads 15 from time to time. Spare earpads are available from your Sennheiser dealer (see "Accessories and spare parts" on page 10).

## If a problem occurs...



### You cannot hear anything?

Possible cause	Solution
Is there a free line of sight between receiver and transmission system?	Remove obstacles in the light path between receiver and transmission system.
Are transmission system and receiver exposed to direct sunlight?	Avoid exposure to direct sunlight.
Is the volume of the receiver too low?	Increase the volume by turning the volume control ② (see page 5).
Is the rechargeable battery inserted properly into the receiver and fully charged?	Remove the rechargeable battery and reinsert it into the receiver. If this doesn't help: recharge the rechargeable battery (see page 7).
Is the receiver out of range?	Move the receiver closer to the transmission system.

### You can hear the sound only with one ear?

Possible cause	Solution
Is the balance adjusted correctly?	Turn the balance control ③ to the left or right (see page 6).

### You hear warning signals?

Warning signal	Meaning
 6 short beeps	The receiver is not receiving a signal from the transmission system: <ul style="list-style-type: none"> <li>The transmission system and receiver are too far apart from one another. The receiver switches off automatically after 3 minutes.</li> <li>The transmission system is switched off.</li> </ul>
 2 long beeps	The rechargeable battery is almost flat.

If a problem occurs that is not listed in the above tables or if the problem cannot be solved with the proposed solutions, please contact your Sennheiser partner for assistance.

## Accessories and spare parts

---

**CAUTION!** Danger of damage to the device!

Components from other manufacturers (e.g. for power supply or rechargeable battery) may cause damage to the device and will invalidate the warranty.

- ▶ Use only original Sennheiser accessories and spare parts.
- 



The following HDI 830 accessories are available from your specialist dealer:

Cat. no.	Accessory/spare part
500898	BA 300 spare rechargeable battery
502710	L 300 10-10 charger
528123	Earpads (silicone, black), 5 pairs
528124	Earpads (silicone, transparent), 5 pairs
528125	Earpads (foam, black), 5 pairs
531428	Swivel heads for earpads, 10

## Specifications

Modulation	FM, stereo
Receiving frequencies	2.3 MHz/2.8 MHz
Frequency response	50 Hz–16,000 Hz
Maximum SPL	125 dB (SPL)
Signal-to-noise ratio (1 mV, peak deviation)	typ. 75 dBA
THD	< 1%
Operating time	up to 12 hours
Charging time for rechargeable battery	approx. 3 hours
Power supply	via BA 300 lithium polymer rechargeable battery (3.7 V/150 mAh)
Weight	approx. 68 g (incl. rechargeable battery)
Dimensions	approx. 240 x 128 x 26 mm

The device meets the following standards:

Europe		<b>EMC:</b> EN 55013, EN 55020 <b>Safety:</b> EN 60065, UL 2054
USA		47CFR15_B
Canada	IC	ICES-003

# Manufacturer Declarations

## Warranty

Sennheiser electronic GmbH & Co. KG gives a warranty of 24 months on this product.

Current warranty information is available on the Internet at [www.sennheiser.com](http://www.sennheiser.com) or from your Sennheiser partner.

## CE Declaration of Conformity



This device is in compliance with the essential requirements and other relevant provisions of Directives 2004/108/EC and 2006/95/EC.

The declaration is available on the internet at [www.sennheiser.com](http://www.sennheiser.com).

## Rechargeable and Non-Rechargeable Batteries



Dispose of only discharged used rechargeable batteries and used batteries at a specialist dealer or in a battery collection container.

## Statements regarding FCC and Industry Canada

This device complies with Part 15 of the FCC Rules and with RSS-210 of Industry Canada. Operation is subject to the following two conditions: (1) this device may not cause harmful interference, and (2) this device must accept any interference received, including interference that may cause undesired operation.

This equipment has been tested and found to comply with the limits for a Class B digital device, pursuant to Part 15 of the FCC Rules. These limits are designed to provide reasonable protection against harmful interference in a residential installation. This equipment generates, uses and can radiate radio frequency energy and, if not installed and used in accordance with the instructions, may cause harmful interference to radio communications. However, there is no guarantee that interference will not occur in a particular installation. If this equipment does cause harmful interference to radio or television reception, which can be determined by turning the equipment off and on, the user is encouraged to try to correct the interference by one or more of the following measures:

- Reorient or relocate the receiving antenna.
- Increase the separation between the equipment and receiver.

- Connect the equipment into an outlet on a circuit different from that to which the receiver is connected.
- Consult the dealer or an experienced radio/TV technician for help.

This class B digital device complies with the Canadian ICES-003.

Changes or modifications made to this equipment not expressly approved by Sennheiser electronic Corp. may void the FCC authorization to operate this equipment.

Before putting the device into operation, please observe the respective country-specific regulations!



Sennheiser electronic GmbH & Co. KG  
Am Labor 1, 30900 Wedemark, Germany  
[www.sennheiser.com](http://www.sennheiser.com)

Printed in China  
Publ. 04/09  
528269/A02