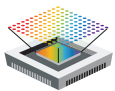
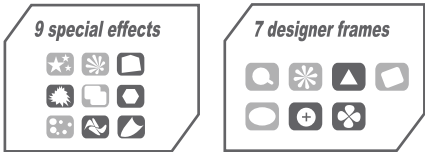


Webcam user manual for special effect software



Latest CMOS Sensor,allowing the fullest expression of your senses

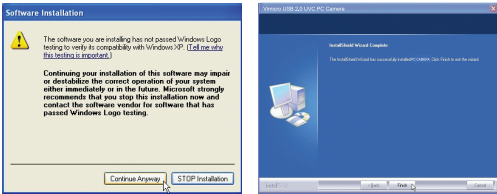
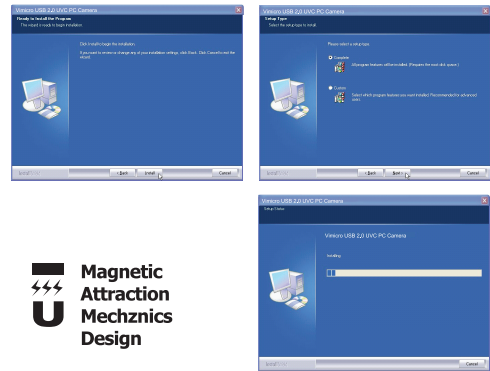


1 Installing driver

1-1 installing WebCam driver

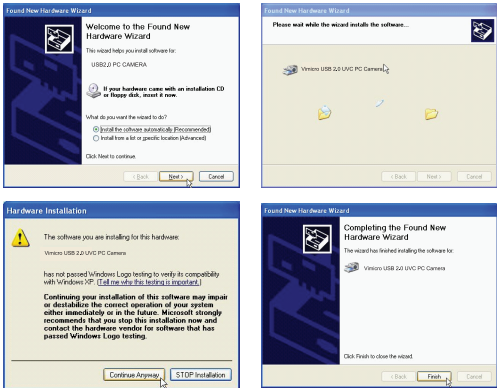
Step 1: Turn on your computer or notebook and close all the programs running under the Windows system
Step 2: Select the driver of your webcam and follow the on-screen instructions to complete the driver installation
Step 3: Please refer to the pictures to complete the Webcam driver installation

▼Load the installation CD-ROM driver wait few seconds for Auto Run Menu to run.



1-2 Installing Hardware

Step1: Please plug the product in to the USB port on your computer; it will be detected after a few seconds. Under Windows ME you will need the system CD-ROM. Please prepare your systems CD-ROM
Step 2: Please refer to the pictures to complete the hardware installation



1-3 Check Device

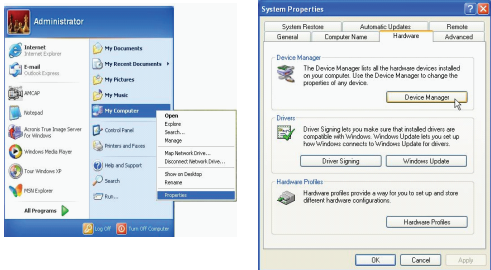
Step 1: Check the "Imaging Devices" under "Device Manager" to see if the below device is shown and make sure that no exclamation mark appears
A.Select "My Computer" -> "Properties"
B.Select "Hardware" of the "Device Manager"
C.Check "WEBCAM Device" is shown and make sure no exclamation mark appears

▲Please note: Please ignore this step if your model does not come with the built in Mic

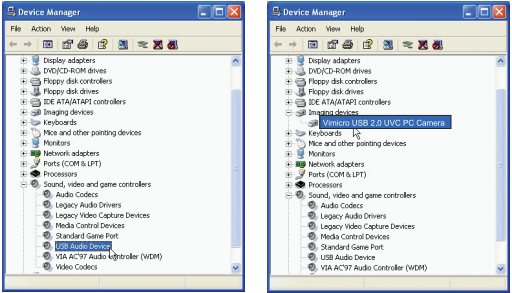
Step 2. Check 『Control Panel』->『Sounds Audio Devices』->『Audio』->『Sound recording』, if you want to use the embedded microphone you must make sure the setting is on 『USB Camera』

Step 3. Please refer to the pictures to complete check device

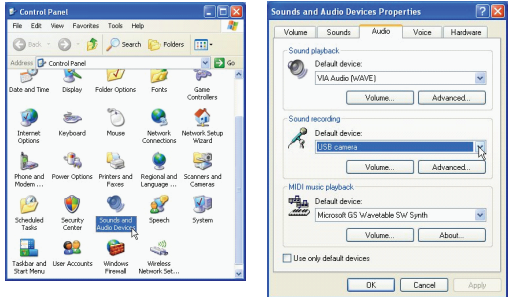
▼Select 『My Computer』->『Properties』



▼Check 『WEBCAM Device』 is shown and make sure no exclamation mark appears



▼Check 『Control Panel』->『Sounds Audio Devices』->『Audio』->『Sound recording』, if you want to use embedded microphone you must make sure the setting is on『USB Camera』



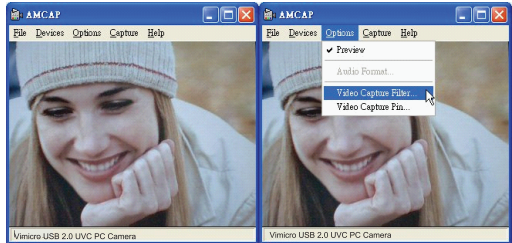
▲Please note: for the UVC version, must install the driver to activate the special effect functions and photo frames

2 Advanced setting

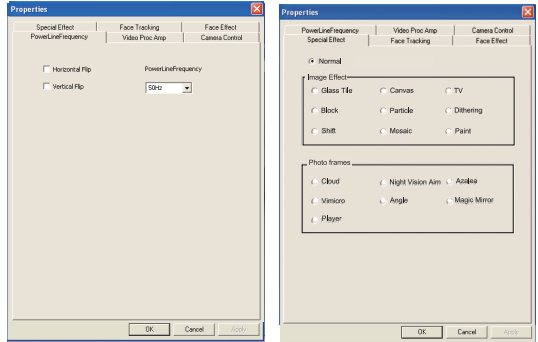
2-1 AMCAP High-level setting

Step 1: Open 『Properties』->『USB Webcam』->『AMCAP』
Step 2: If you find that the video is not stable while previewing. Please open 『AMCAP』 Select 『Options』->『Video Capture Filter...』->『Settings』 set video frequency at 60Hz or 50Hz.
Step 3:Select 『Capture Source』
Step 4. Select 『Options』->『Video Capture Pin...』,Setup stream format 『Output Size』
Step 5. Select 『File』->『Set Capture』, Set up for AVI image capture location.

▼Open 『AMCAP』 Select 『Options』->『Video Capture Filter...』

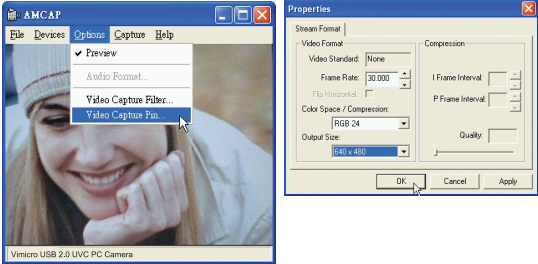


▼Set video frequency at 60Hz or 50Hz and select 『Capture Source』



▲To avoid blurry images, choose the mode of "50Hz" or "60Hz" dependant on your power source environment or video output signal system. Usually AC 220-50Hz/AC 110-60Hz

▼Select 『Options』->『Video Capture Pin...』,Setup stream format 『Output Size』



Questions and Answers

Q1:What should I do when videos drop frame or lag ?
Ans: WebCam supports "Auto White Balance" and "Auto Exposure". Your camera will activate these functions automatically when the light is not sufficient. You can disable "Auto Exposure" if it causes light delay problems.

Q2: Why is it that my friend can not hear my voice when using MSN?
Ans: 1.Check the "Sounds and Audio Devices Properties" on the Device Manager and make sure "Sound recording" is on default to use the PC camera.

2.Check if your network use firewall (many company have use firewall).

Check if your friends using different versions of IM software that might not compatible with yours.

Q3:How to take 1.3 Mega pixels snapshots?

Ans:
Select 『Options』->『Video Capture Pin...』,Then set the 『VOutput Size』 at VGA(640 X 480)
Then Select 『Options』->『Video Capture Filter...』->『Settings』 Set VGA Size in SXGA
The different available resolutions are VGA(640 X480), SVGA(800X600), SXGA(1280X960)