

TECHNIKA ADVANCED

IDTV User Guide



Model No	19-208
	19-208W
	22-208
	22-208W



Important Guarantee Information.

Congratulations on purchasing this television. We hope you have many years of trouble free enjoyment from your purchase.

Your product is covered under the manufacturers guarantee for 12 months from date of purchase.

In the event of a fault being diagnosed, please refer to the frequently asked questions/troubleshooting section at the rear of this user guide.

If you are still unable to remedy the fault, try resetting the TV to factory settings, (details in this user guide) or contact the helpline.

In the event that a fault is diagnosed, the helpline will arrange to collect the TV from your home or work address, return it to our service centre, repair the item and then return it to you.

If we believe we cannot offer a permanent repair, we will replace the item.

Sky Media UK LTD – Helpline Information

Telephone **0871 2000 463**

Email: **service@skymediauk.co.uk**

Internet: **www.skymediauk.co.uk**

The telephone opening hours are Monday to Friday 8.30am to 6pm, Saturday 9am – 5pm.

On the web site, you can register your product and guarantee, if you do it within 7 days of purchase, you will also receive an extra **FREE** 3 months warranty, making the warranty 15 months from date of purchase.

You must retain all packaging materials as you will need these in the event of warranty/service support.

If you need to call the helpline, you will need the following information.

Model Number _____ (Can be found on rear of TV)

Serial Number _____ (Can be found on rear of TV)

Date of purchase _____ (Can be found on sales receipt)

Keep this important information about how to re-tune your TV during the digital TV switchover

When does switchover happen?

The exact date you switch depends on the transmitter you are served by. To check when you switch, go to Digital UK's postcode checker on www.digitaluk.co.uk Check your ITV news service or look at Teletext page 106 to see what TV region you're in.



Important information regarding the digital TV switchover

Television in the UK is going digital, bringing us all more choice and new services. Starting late 2007 and ending in 2012, television services in the UK will go completely digital, TV region by TV region.

How the switchover affects your TV equipment.

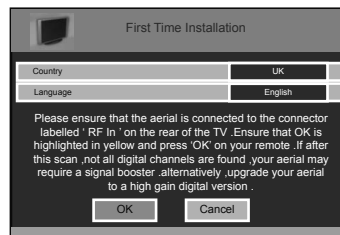
Your new TV has a digital tuner built in, which means it is ready to receive the Freeview signal by simply connecting it into your aerial socket (you can check if you can get digital TV through your aerial now or whether you will have to wait until the switchover at www.digitaluk.co.uk)

When the TV switchover happens in your area, there are at least two occasions when you will need to re-tune your TV in order to continue receiving your existing TV channels and also to pick up new ones. Digital UK, the body leading the digital switchover, will advise you when you need to retune during the switchover.

How to retune.

Retuning your TV is a very quick and simple process. We recommend that you retune every few months to ensure you are receiving the very latest TV and radio channels that are broadcast.

- In digital/freeview mode, on the remote control press 'LCD menu' quickly followed by 8-8-8-8 (so press the number 8 four times)
- You will now enter the 'First time installation' mode. (if you do not, please refer to the section called 'getting started' later in this user guide)



- Simply press 'OK' or 'Enter' on the remote control and your TV will retune.

If you do not retune your TV when advised to do so by Digital UK, you may lose some or all of your channels until you do re-tune.

If you are missing any channels, it may be that they are not available in your area, or that your TV aerial needs upgrading.

For help and support regarding the digital switchover, please contact Digital UK:

Telephone: 08456 50 50 50

Digital UK website: www.digitaluk.co.uk

If you require technical or warranty support on this television, please contact the manufacturer helpline, do not contact Digital UK unless your query is regarding the digital switchover.

WARNINGS

Caution

This television contains no user serviceable parts. Please refer to the manufacturer or authorised repair agent in the event of malfunction. Do not remove the back cover from the television.

Warning

To reduce the risk of fire, electric shock or damage to the television, do not expose it to dust, rain or moisture, or place any objects filled with liquids on or near the television.

Do not place the television in a confined space, ensure that nothing can obstruct the ventilation openings at the rear of the television.

Do not place naked flames on or near the television.

Dispose of this television and any components including batteries in an environmentally friendly manner. If in doubt, please contact your local authority for details of recycling.

Your LCD TV should be cleaned using a dry or slightly damp cloth. You should not use an alcohol based cleaner

Safety

For your safety, this appliance is fitted with a fused moulded 3 pin mains plug. Should the fuse need to be replaced, ensure that any replacement is of the same amperage and approved with the BSI mark. (V)

Never try and replace the mains plug unless you have adequate qualifications and are legally authorised to do so. In the event that a replacement Mains cable is required, contact the manufacturer for a suitable replacement.

Never use the television if it is damaged in any way.

Always place the television on a flat level surface avoiding anywhere which may be subject to strong vibration. Ensure the television is not placed on top of the power cable as the weight of the television may damage the cable and cause a safety hazard.

Never place mobile phones, speakers or any other device which may cause magnetic or radio interference with the television. If interference is apparent, move the device causing the interference away from the television.

Packaging

Please save the packaging for the television as you will need this in the event of warranty/service repair or support. We are unable to carry out warranty/service if you are unable to package it correctly. The safest way to package your item in the event of warranty/service repair is in its original box/packaging

WARNINGS

Screen Burn

A characteristic of LCD TV Panels is that displaying the same image for a long time may cause a permanent after-image to remain on the screen. This is called screen burn.

Examples of images that you need to be aware of are as follows (this is not an all-inclusive list):

- **TV Channel Logos:** e.g. Shopping channel logos and pricing displays—especially if they are bright and stationary. Moving or low-contrast graphics are less likely to cause ageing of the screen.
- **Time Displays**
- **Teletext:** Do not view a stationary page for long periods of time.
- **TV/DVD Menus:** e.g. Listings of DVD disk content.
- **Pause Mode:** Do not leave the TV in pause mode for long periods of time, e.g. When watching DVDs or videos.

Note: To prevent screen burn if viewing any of the above for long periods of time, reduce contrast and brightness when viewing. Once burn-in occurs it will never disappear completely.

How do I dispose of this product?

UK: Waste electrical products should not be disposed of with household waste. Separate disposal facilities exist. For your nearest facilities, please see www.recycle-more.co.uk or instore for details.

ROI: Produced after 13th August 2005. Waste electrical products should not be disposed of with household waste. Please recycle where facilities exist. Check with your Local Authority or retailer for recycling advice.





CONTENTS

SETTING UP YOUR TV

- What is included in the box	8
- Attaching/Removing the stand & wall mounting	9
- Tuning in TV	10
- Digital Switchover Re-Tune	10
- Remote control buttons and their functions	11
- TV buttons and their functions	12
- Inputs and Connections	13
- Choosing Mode/Source	13

TV MENU OPERATION

PICTURE SETTINGS MENU	14 - 15
- Selecting Picture Mode Preset	14
- Adjusting Contrast	14
- Adjusting Brightness	14
- Adjusting Colour	14
- Adjusting Tint	15
- Adjusting Sharpness	15
- Adjusting Colour Temperature	15
- Dynamic Noise Reduction	15
SOUND SETTINGS MENU	16
- Adjusting Volume	16
- Selecting Sound Mode Preset	16
- Adjusting Bass	16
- Adjusting Treble	16
- Adjusting Balance	16
TUNING SETTINGS MENU	17
- Adjusting Country	17
- Auto Tuning	17
- Manual Tuning	17
- Program Edit / Changing Channel Position	17
- Common Interface Slot	18
TIMER SETTINGS MENU	18
- Sleep Timer	18
- On Screen Display Timer	18
GENERAL SETTINGS MENU	19 - 20
- On Screen Menu Language	19
- Adjusting Picture Format	19
- Blue Screen	19
- System Lock	19
- First Time Installation	20
- Reset television to factory settings	20

CHANNEL SERVICES

- Using Digital TV teletext	20
- Using 7 day TV Guide	20
- Using Analogue TV teletext	21

PC OPERATION

- Connecting to a PC	22
- Auto Configuration of Screen	23
- Phase	23
- Clock	23
- Horizontal Position	23
- Vertical Position	23
- Position Reset	23

DVD MENU OPERATION

- System Set Up	24
- Adjusting TV System	24
- Adjusting Picture Format	24
- Return to Default	24
- Audio Set Up	25
- Adjusting Tone	25
- Digital Set Up	25
- Adjusting Dynamic Range	25
- Adjusting the sound	25
- Changing Regions	25

USING WITH SKY DIGITAL 27

CONNECTING A GAMES CONSOLE

Connecting a games console	28
----------------------------	----

GENERAL INFORMATION

- Trouble Shooting	29
- Technical Specifications	30
- Index	31

If you experience any problems with this Television,
Please contact the helpline.

Customer Support/Technical Helpline

Sky Media UK LTD

Telephone: 0871 2000 463

Email: service@skymediauk.co.uk

WHAT IS INCLUDED IN THE BOX

Accessories

Included with this TV are the following accessories:

1x - User Guide Book



1x - RF lead



1x - Quick Start Guide



1x - 3.5mm jack to phono cable



1x - Remote control



2x - AAA batteries



1x - TV



Please save your packaging as you will need this in the event of warranty/service repair or support. We are unable to carry out warranty/service if you are unable to package it correctly. The safest way to package your item in the event of warranty/service repair is in it's original box/packaging.

ATTACHING/REMOVING THE STAND & WALL MOUNTING

Attaching the stand

Fig 1



Fig 2



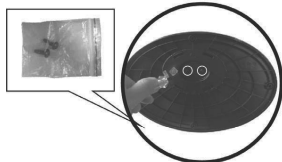
Fig 3



Fig 4



Fig 5



Removing the stand for wall mounting

- 1) Remove the screws shown
- 2) The stand will now come off



IMPORTANT— BEFORE DRILLING ANY HOLES IN THE WALL ENSURE YOU ARE NOT DRILLING WHERE THERE COULD BE ANY ELECTRIC WIRES, WATER OR GAS PIPES

THIS TV REQUIRES A VESA 100 WALL MOUNT, OR EQUIVALENT



100

- 1) Remove the four screws highlighted below.
- 2) The wall mount can now be easily attached to the mounting holes on the rear of the TV. These holes are indicated in the picture below



Important – If wallmounting this TV, only use the screws already provided in the wallmounting holes. Using other screws which are longer could cause irreparable damage to internal parts.

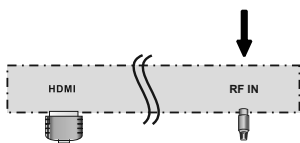
GETTING STARTED - INITIAL SET UP

IMPORTANT - AFTER TUNING DO NOT PRESS ANY BUTTONS FOR 20 SECONDS SO THE CHANNEL INFORMATION CAN BE STORED.

TUNING IN

IMPORTANT — Please ensure the TV has reached room temperature before connecting the power for the first time

- 1) Connect the mains lead to your electrical outlet
- 2) Connect the RF cable supplied to the **'RF IN'** on the rear of the TV and connect the other end of the cable to your TV Aerial outlet



- 3) Switch on the television using the rocker switch located on the side of the TV
- 4) Install batteries in the remote control and press the [STANDBY] button to turn on the TV.



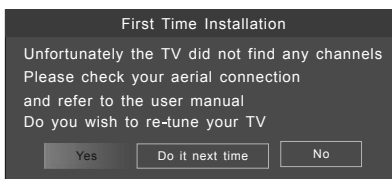
The 'First Time Installation' menu should now appear. If it does not, please press [LCD-MENU] then 8-8-8-8 and the menu will appear.

- 5) Press [OK] on the remote control whilst 'OK' is highlighted on screen.

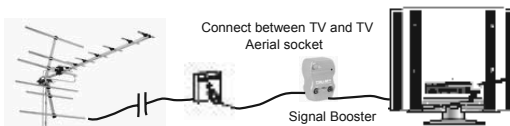


Tuning will now take place.

If no channels are found the following screen will appear, please refer to additional information below.



TYPICAL SET-UP

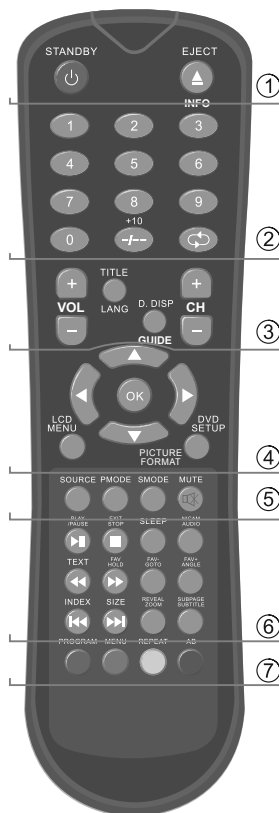


Once you have connected a 'Signal booster' you will need to retune the TV in order to receive all of the channels.

If the TV finds some, but not all, of the Digital channels, the TV is functioning correctly but the signal being received is not strong enough. (The signal strength needs to be above 85% - you can see the signal strength the TV is receiving when you change channels/ programmes) you will need to increase the signal reception in order to receive all of the channels available. The most economical way to do this is by purchasing and connecting a 'signal booster' in between the TV and the TV aerial socket. If this does not solve the problem, you will need to upgrade the TV aerial to a digital hi-gain compatible aerial

REMOTE CONTROL BUTTONS

- ① STANDBY**
Switch on TV when on standby or vice versa
- EJECT / INFO**
DVD mode: To eject disc
Digital/analogue mode: To display channel information
- ② NUMBER BUTTONS**
Digital/analogue mode: 0 – 9 to select a TV channel directly.
The channel will change after 2 seconds.
Teletext mode: To enter a page number
- /-**
Analogue mode: To enter a channel of 2 digits i.e. channel 15
- ↶**
Digital/analogue mode: To return to the previous channel viewed
- ③ VOL+/-**
To increase / decrease the sound level
- TITLE/LANG**
DVD mode: To display the DVD title menu
Digital mode: To change the audio language (if available)
- D.DISP/GUIDE**
DVD mode: To display the current disc information
Digital mode: To open the TV Guide menu
- CH +/-**
To increase or decrease the channel being watched
- ④ NAVIGATION BUTTONS (▲/▼/◀/▶/OK)**
Allows you to navigate the on-screen menus and adjust the system settings to your preference
- LCD MENU**
To display OSD menu
- DVD SETUP/PICTURE FORMAT**
DVD mode: To display the DVD setup menu
All other modes: to switch the screen between the different picture formats
- ⑤ SOURCE**
Press to display the source menu
- P.MODE**
Press repeatedly to cycle through the available picture modes
- Standard → Personal → Movie → Sport → Mild → Game
- S.MODE**
Press repeatedly to cycle through the available sound modes
- Voice → Music → Theatre → Personal
- MUTE**
Press to mute the sound and press again to restore

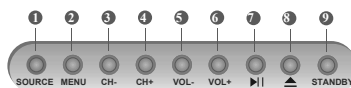


- ⑥ PLAY/PAUSE**
Press to play or pause the DVD playing.
- EXIT/STOP**
Digital mode: Exit the Digital menu.
DVD mode: Stop the DVD playing.
- SLEEP**
Press repeatedly to cycle through the sleep options
15min → 30min → 45min → 60min → 75min → 90min → 105min → 120min
- NICAM/AUDIO**
Digital mode: press to select NICAM.
DVD mode: press to select DVD audio channels.
- TEXT(Fast reverse)**
Teletext mode: press to enter the teletext mode.
DVD mode: press to play a DVD program in fast rewind mode.
- FAV/HOLD**
Digital mode: press to display FAV menu.
Teletext mode: press hold on or off for current page display.
DVD mode: press to play a DVD program in fast forward mode
- FAV-/GOTO**
Digital mode: decrease fav channel.
DVD mode: press to go to DVD.
- FAV+/ANGLE**
Digital mode: increase fav channel.
DVD mode: select different angle of DVD
- INDEX(PREV)**
Teletext mode: request the index page.
DVD mode: press to replay the current program from the previous chapter.
- SIZE(NEXT)**
Teletext mode: change the display size.
DVD mode: press to advance forward to the next chapter.
- REVEAL/ZOOM**
Teletext mode: To reveal or hide the hidden words.
DVD mode: select the zoom to change picture size.
- SUBPAGE/SUBTITLE**
Teletext mode: Sub coded page access.
Digital mode: To switch the dialogue at the bottom off the screen
- ⑦ Program**
To select the DVD program playback.
- MENU**
To display the DVD disc menu
- REPEAT**
Repeat playback.
- AB**
Press to AB playback.

TV BUTTONS & THEIR FUNCTIONS

TOP PANEL BUTTONS

1	Displays the input source menu
2	Displays Menu/OSD
3	Program/Channel down and menu down
4	Program/Channel up and menu up
5	Volume down and menu left
6	Volume up and menu right
7	DVD - Play/Pause
8	DVD - Eject
9	Standby On/Off



Choosing Mode/Source

To switch between the different connections is very easy.

- 1) Press [SOURCE] - The following will appear
- 2) Press [V] or [^] to select the input you require.
- 3) Press [OK]

Connecting HD Ready Devices

There are two options for HD.

- 1) By connecting via HDMI cable (not included) – this provides both HD picture and sound.
- 2) By connecting via Component (YPbPr) cable (not included) – this provides HD picture. Source should be set to YPbPr. For Sound, connect in to the 3.5mm audio input YPbPr/AV (not included)

SOURCE MENU

TV/ANALOGUE
DIGITAL/FREEVIEW
HDMI
SCART
YPbPr/COMPONENT
S-VIDEO
VGA/PC
DVD

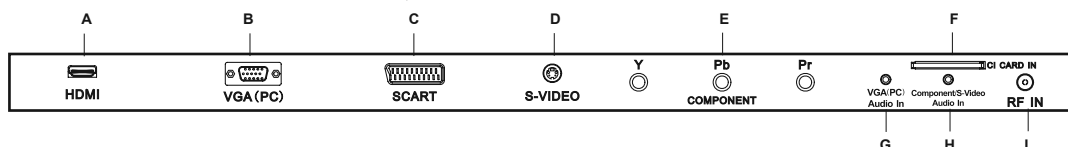
Scroll $\downarrow \uparrow$ on the required input source and press OK

INPUTS & CONNECTIONS

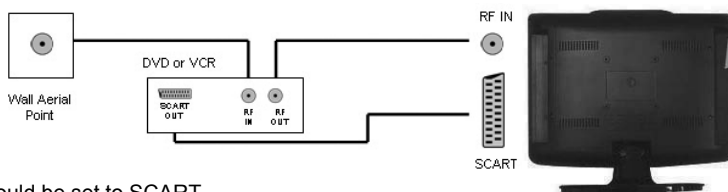
REAR CONNECTIONS



A	HDMI	HDMI input
B	VGA (PC)	VGA-PC input
C	SCART	SCART input
D	S-VIDEO	S-Video input
E	YPbPr	Component input
F	CI CARD IN	CI Port input
G	VGA (PC) Audio In	3.5mm PC Audio input
H	Component/ S-Video Audio In	3.5mm Component/S-Video Audio input
I	RF IN	RF input



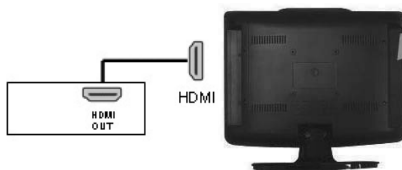
CONNECTING A DVD RECORDER OR VIDEO RECORDER



Source should be set to SCART

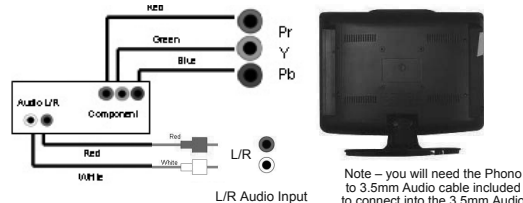
CONNECTING A HIGH DEFINITION DEVICE

OPTION A – HDMI



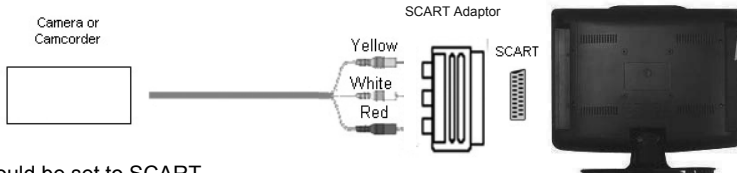
Source should be set to HDMI

OPTION B – COMPONENT & AUDIO CABLES



Source should be set to YPbPr/COMPONENT

CONNECTING A CAMERA OR CAMCORDER



Source should be set to SCART

TV MENU OPERATION

PICTURE SETTINGS MENU

Lets you adjust picture mode, contrast, brightness, colour, tint and sharpness to enhance the viewing experience.

PLEASE NOTE – YOU CAN ONLY MAKE ADJUSTMENTS TO CONTRAST, BRIGHTNESS & COLOUR WHEN PICTURE MODE IS SET TO 'PERSONAL'.

Selecting Picture Mode Preset

Switch between different preset picture options

Standard	All settings are set to 50
Personal	Lets you manually alter all the settings
Movie	Set to enhance when watching a movie
Sport	Set to enhance when watching a sport
Mild	Set to be lighter in colour and less bright
Game	Set to enhance when playing a games console

- 1) Press [LCD-MENU] to enter menu
- 2) Press [V] to highlight Picture Mode
- 3) Press [>] to navigate through the various options



- 4) Press [EXIT] to exit

Adjusting Contrast (Only available when Picture Mode is set to Personal)
Switch the balance between black and white

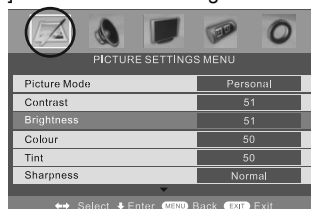
- 1) Press [LCD-MENU] to enter menu
- 2) Press [V] to highlight Contrast
- 3) Press [>] to increase the contrast or [<] to decrease the contrast



- 4) Press [EXIT] to exit

Adjusting Brightness (Only available when Picture Mode is set to Personal)
Increase or decrease the brightness of the picture

- 1) Press [LCD-MENU] to enter menu
- 2) Press [V] to highlight Brightness
- 3) Press [>] to increase the brightness or [<] to decrease the brightness



- 4) Press [EXIT] to exit

Adjusting Colour (Only available when Picture Mode is set to Personal)
Increase the colour from black and white to vivid

- 1) Press [LCD-MENU] to enter menu
- 2) Press [V] to highlight Colour
- 3) Press [>] to increase the colour or [<] to decrease the colour



- 4) Press [EXIT] to exit

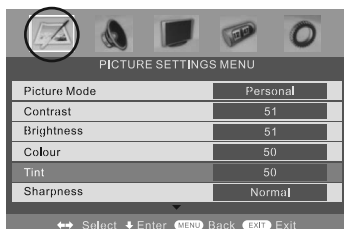
TV MENU OPERATION

PICTURE SETTINGS MENU

Adjusting Tint (only available on some sources)

Lets you increase or decrease the level of tint within the picture

- 1) Press [LCD-MENU] to enter menu
- 2) Press [V] to highlight Tint
- 3) Press [>] to increase the tint or [←] to decrease the tint



- 4) Press [EXIT] to exit

Adjusting Sharpness

You can change the sharpness between the different preset options

Normal	For standard use
Sharp	For pictures with little movement
Sharpest	For pictures with nearly no movement
Soft	For pictures with large amount of movement
Softest	For pictures with lots of movement

- 1) Press [LCD-MENU] to enter menu
- 2) Press [V] to highlight Sharpness
- 3) Press [>] to navigate through the various options



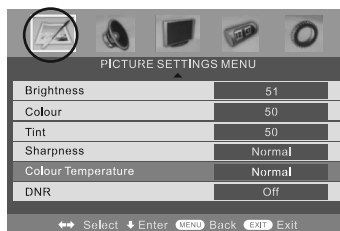
- 4) Press [EXIT] to exit

Adjusting Colour Temperature (only available on some sources)

There are 3 presets for colour temperature

Normal	Standard setting
Warm	Increased red within the picture
Cold	Increased blue within the picture

- 1) Press [LCD-MENU] to enter menu
- 2) Press [V] to highlight Colour Temperature
- 3) Press [>] to navigate through the various options

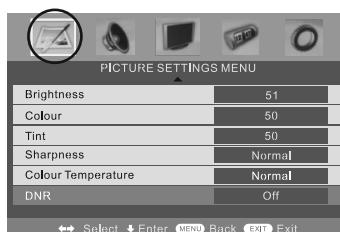


- 4) Press [EXIT] to exit

Dynamic Noise Reduction

Reduces the interference in the picture.

- 1) Press [LCD-MENU] to enter menu
- 2) Press [V] to highlight DNR
- 3) Press [>] to switch between OFF, LOW, MID & HIGH



- 4) Press [EXIT] to exit

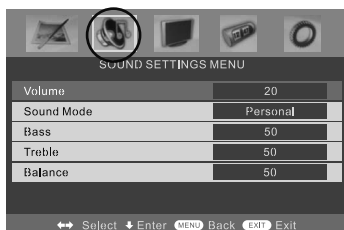
TV MENU OPERATION

SOUND SETTINGS MENU

Adjusting Volume

Lets you adjust the volume of the television

- 1) Press [LCD-MENU] to enter menu
- 2) Press [>] to move to Sound Settings Menu
- 3) Press [V] to highlight Volume
- 4) Press [>] to increase the volume or [<] to decrease the volume



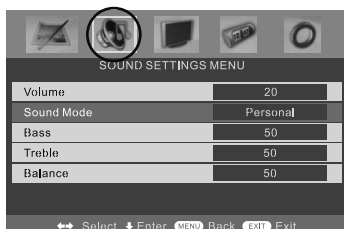
- 5) Press [EXIT] to exit

Selecting Sound Mode Preset

Switch between different preset sound options

Voice	Emphasises voice over other sounds
Music	Emphasises music over voices
Theatre	Provides liver and full sound for movies
Personal	Selects your personal sound settings

- 1) Press [LCD-MENU] to enter menu
- 2) Press [>] to move to Sound Settings Menu
- 3) Press [V] to highlight Sound Mode
- 4) Press [>] to navigate through the various options



- 5) Press [EXIT] to exit

Adjusting Bass

To adjust the amount of bass within the sound

- 1) Press [LCD-MENU] to enter menu
- 2) Press [>] to move to Sound Settings Menu
- 3) Press [V] to highlight Bass
- 4) Press [>] to increase the bass or [<] to decrease the bass



- 5) Press [EXIT] to exit

Adjusting Treble

To adjust the amount of treble within the sound

- 1) Press [LCD-MENU] to enter menu
- 2) Press [>] to move to Sound Settings Menu
- 3) Press [V] to highlight Treble
- 4) Press [>] to increase the treble or [<] to decrease the treble



- 5) Press [EXIT] to exit

Adjusting Balance

To switch the sound between the left and right speakers

- 1) Press [LCD-MENU] to enter menu
- 2) Press [>] to move to Sound Settings Menu
- 3) Press [V] to highlight Balance
- 4) Press [>] to increase the balance or [<] to decrease the balance



- 5) Press [EXIT] to exit

TV MENU OPERATION

TUNING SETTINGS MENU (Only Freeview & Analogue TV modes)

Adjusting Country

If you are moving country you may wish to change the Country Settings

- 1) Press [LCD-MENU] to enter menu
- 2) Press [>] to move to Tuning Settings Menu
- 3) Press [V] to highlight Country
- 4) Press [>] to alter the chosen country

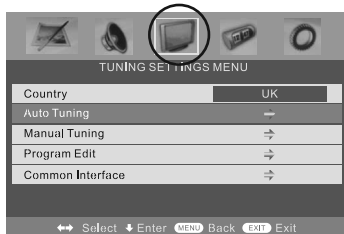


- 5) Press [EXIT] to exit

Auto Tuning

Scan for all channels based on the current settings

- 1) Press [LCD-MENU] to enter menu
- 2) Press [>] to move to Tuning Settings Menu
- 3) Press [V] to highlight Auto Tuning



- 4) Press [>] to enter Auto tuning
- 5) Press [OK] to start the tuning
- 6) Press [EXIT] to exit

Manual Tuning

You may wish to manual search if you can't find a certain channel or if you wish to connect to a Satellite/Cable box via RF/Aerial connector

- 1) Press [LCD-MENU] to enter menu
- 2) Press [>] to move to Tuning Settings Menu
- 3) Press [V] to highlight Manual Tuning
- 4) Press [>] to enter manual tuning
- 5) Press [>] to highlight Start Screen



- 6) Press [>] to start
- 7) Press [EXIT] to exit

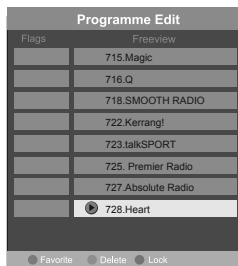
Program Edit / Changing Channel Position (Only Freeview & Analogue TV modes)

You can change the analogue channel position to suit your requirements.

- 1) Press [LCD-MENU] to enter menu
- 2) Press [>] to move to Tuning Settings Menu
- 3) Press [V] to highlight Program Edit



- 4) Press [>] to enter the program edit menu
- 5a) Freeview mode – Press the [Green] button to add the selected channel to your favorite, press it a second time to remove. Press the [Yellow] to delete the channel from the list. WARNING – this will remove the channel complete from the TV. Press [Blue] to lock a channel (to do this the Child Lock function must be set "ON")
- 5b) Analogue TV mode – Press the [>] to select the change you wish to move. Move to the new location and press [OK]



- 6) Press [EXIT] to exit

TV MENU OPERATION

Common Interface Slot (Only in Freeview Mode)

Pay per view services require a "smartcard" to be inserted into the TV. If you subscribe to a pay per view service the provider will issue you with a 'CAM' card "smartcard". The CAM can then be inserted into the COMMON INTERFACE PORT. To access the card follow the steps below.



CAM and smartcard

- 1) Press [LCD-MENU] to enter menu
- 2) Press [>] to move to Tuning Settings Menu
- 3) Press [V] to highlight Common Interface
- 4) Press [>] to enter the menu



- 5) Press [EXIT] to exit

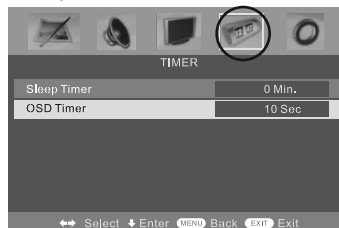
TIMER SETTINGS MENU

Lets you adjust the OSD timing and the sleep timer

Sleep Timer

Lets you set the sleep timer so the television automatically switches off after a certain amount of time.

- 1) Press [LCD-MENU] to enter menu
- 2) Press [>] to move to Timer Settings Menu
- 3) Press [V] to highlight Sleep Timer
- 4) Press [>] to increase the time to the required amount



- 5) Press [EXIT] to exit

On Screen Display Timer

Lets you adjust the amount of time the On Screen Menu stays on the screen before disappearing.

- 1) Press [LCD-MENU] to enter menu
- 2) Press [>] to move to Timer Settings Menu
- 3) Press [V] to highlight OSD Timer
- 4) Press [>] to increase the time and [<] to reduce the time



- 5) Press [EXIT] to exit

TV MENU OPERATION

GENERAL SETTINGS MENU

Lets you adjust the language, picture size, blue screen, add child lock, complete first time installation and reset the television.

On Screen Menu Language

Lets you change the on screen menu language.

- 1) Press [LCD-MENU] to enter menu
- 2) Press [>] to move to General Settings Menu
- 3) Press [V] to highlight Language
- 4) Press [>] to change the language

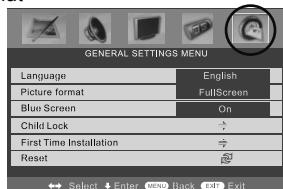


- 5) Press [EXIT] to exit

Picture Format

Lets you adjust the picture format

- 1) Press [LCD-MENU] to enter menu
- 2) Press [>] to move to General Settings Menu
- 3) Press [V] to highlight Picture Format
- 4) Press [>] to change the picture format

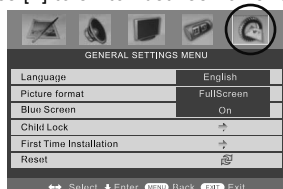


- 5) Press [EXIT] to exit

Blue Screen

Changes the background when there is no input between clear and a blue background

- 1) Press [LCD-MENU] to enter menu
- 2) Press [>] to move to General Settings Menu
- 3) Press [V] to highlight Blue Screen
- 4) Press [>] to switch between on and off



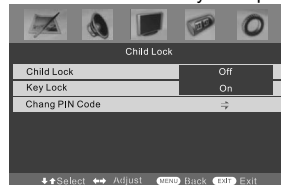
- 5) Press [EXIT] to exit

Child Lock/Key Lock

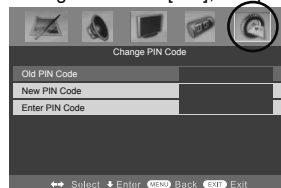
Allows you to lock certain channels and content so that it can not be viewed by children

- 1) Press [LCD-MENU] to enter menu
- 2) Press [>] to move to General Settings Menu
- 3) Press [V] to highlight Child Lock

- 4) To switch on child lock or key lock press [>]



- 5) To change Pin Code enter menu. Enter the old pin code (Default is blank), then enter the new pin code and enter it again. Press [OK], the pin is now changed

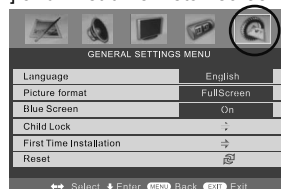


- 6) Press [EXIT] to exit

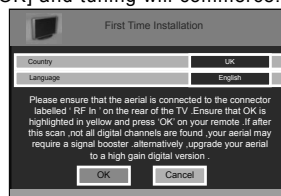
First Time Installation

Allows you to reset the television for first time tuning.

- 1) Press [LCD-MENU] to enter menu
- 2) Press [>] to move to General Settings Menu
- 3) Press [V] to highlight First Time Installation
- 4) Press [>] and First time install screen will appear



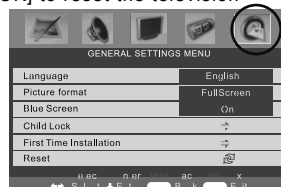
- 5) Press [OK] and tuning will commence.



Reset television to factory settings

You may wish to reset the menus to factory settings e.g. if you have forgotten a changed password

- 1) Press [LCD-MENU] to enter menu
- 2) Press [>] to move to General Settings Menu
- 3) Press [V] to highlight Reset
- 4) Press [OK] to reset the television



- 5) Press [EXIT] to exit

Please note – you can also reset the television to factory settings by pressing [LCD-MENU] then 8-8-8-8

7 DAY TV GUIDE & DIGITAL TELETEXT

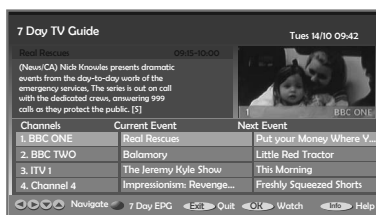
7 DAY TV GUIDE

TV Guide is available in Digital TV mode. It provides information about forthcoming programmes (where supported by the broadcasted channel).

You can view the start and end time of all programs and on all channels for the next 7 days.

It is very simple to operate.

- 1) Press [GUIDE]. The following now and next menu will appear.



- 2) Navigate through the now and next menu using the [>], [<], [V] and [/] buttons
- 3) Press the [BLUE] button to enter the 7 day menu. Reminders can now be added by pressing [OK].



- 4) Press [EXIT] to exit the 7 day TV Guide.

Digital TV Teletext

With Digital TV (Freeview) there is also digital teletext available on some channels. Simply follow the on screen commands. Here is an example of the BBC digital teletext service.

- 1) To start digital teletext press RED button.



- 2) To select the information you require you can scroll using [V] or [/] and press [OK] alternatively you can key the page number for example [3][0][0] followed by [OK]



You can then navigate using the colour buttons (Red, Green, Yellow, Blue), the [V] [/] buttons and numbers.

If you wish to exit at anytime press [TEXT]

TELETEXT OPERATION (ANALOGUE TV ONLY)

Teletext is a service offered by some broadcasters.

Teletext Operation

- 1) To start digital teletext press the RED button (BBC channels) or the TEXT buttons (Other channels)

Here is an example of BBC1



- 2) You can now navigate to the page you require in a number of ways:
 - a) Press the page you require using the number buttons i.e. page 302, by pressing [3][0][2]
 - b) Press the colour buttons, these will take you to the page indicated on screen for each colour
- 3) To exit Teletext press [TEXT] twice at any time

Other buttons

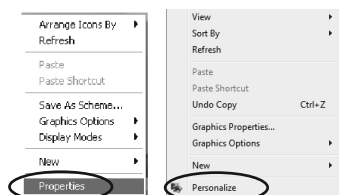
[SIZE] this increases or decreases the size of the text on screen
 [INDEX] some pages are more than one page long this button displays the number of pages
 [REVEAL] if there is an answer or something hidden this will display it
 [SUBPAGE] displays the sub page if it exists
 [HOLD] This stops the pages changing when there are multiple pages

USING THE TELEVISION AS A COMPUTER MONITOR

IMPORTANT – Before connecting the computer to the television you must ensure the computer settings are correct for the television. You MUST do this using your old monitor.

WINDOWS XP, WINDOWS VISTA

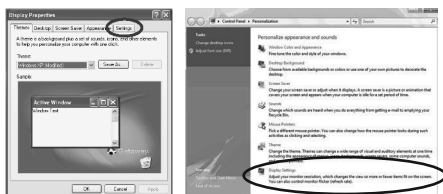
- 1) Switch on your computer
- 2) When finishing booting up right click your mouse anywhere on the screen



XP Screen

VISTA Screen

- 3) Left click your mouse on Properties/Personalise



XP Screen

VISTA Screen

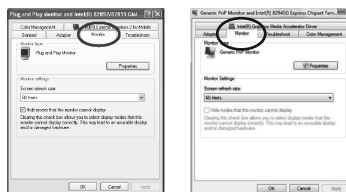
- 4) Left click your mouse on Setting/Display Settings. Ensure the screen resolution is set to what is shown in the technical specifications section toward the rear of this user guide. To correct the resolution to that of the television move the slider.



XP Screen

VISTA Screen

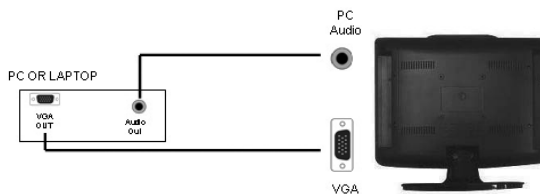
- 5) Left click your mouse on Advance/Advance Settings and left click on Monitor



XP Screen

VISTA Screen

- 6) Left click on the drop down for Screen refresh rate and select 60 Hertz.
- 7) Click on Apply, then click Yes and the settings will be saved.
- 8) Now switch off your computer and connect the television (as shown below)



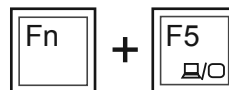
- 9) Re-start your computer and switch the source to VGA

CONNECTING A LAPTOP

In addition to the above if you are connecting a laptop to the television you will also need to activate the VGA connection on the laptop.

This can vary based on the brand of laptop you have.

- 1) Connect the laptop to the television
- 2) On the Laptop push buttons



The screen will now switch to the television.

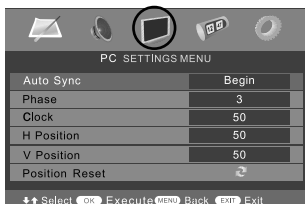
PC MENU OPERATION (VGA)

VGA MENU

Auto Configuration of Screen

Lets you automatically configure the television to be used as a computer monitor

- 1) Press [LCD-MENU] to enter menu
- 2) Press [>] to select PC settings
- 3) Press [V] to select Auto Sync
- 4) Then press [>] for the TV to automatically configure itself



- 5) Press [EXIT] to exit

Phase

To adjust delay time of phase in order to reduce the noise of picture

- 1) Press [LCD-MENU] to enter menu
- 2) Press [>] to select PC settings
- 3) Press [V] to select Phase
- 4) Then press [>] or [<] to increase or decrease the phase

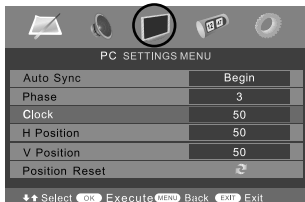


- 5) Press [EXIT] to exit

Clock

Alter this in order to reduce the noise within the picture

- 1) Press [LCD-MENU] to enter menu
- 2) Press [>] to select PC settings
- 3) Press [V] to select Clock
- 4) Then press [>] or [<] to increase or decrease the clock

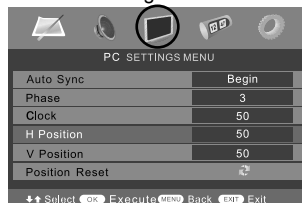


- 5) Press [EXIT] to exit

Horizontal Position

Changes the horizontal position of the picture

- 1) Press [LCD-MENU] to enter menu
- 2) Press [>] to select PC settings
- 3) Press [V] to select H-Position
- 4) Then press [>] or [<] to move the picture to left or right

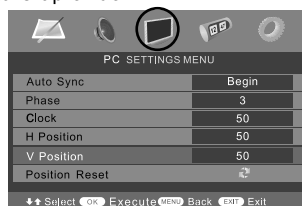


- 5) Press [EXIT] to exit

Vertical Position

Changes the vertical position of the picture

- 1) Press [LCD-MENU] to enter menu
- 2) Press [>] to select PC settings
- 3) Press [V] to select V-Position
- 4) Then press [>] or [<] to move the picture up or down

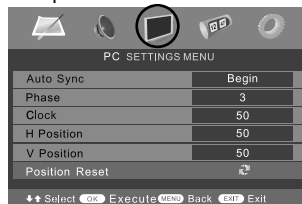


- 5) Press [EXIT] to exit

Position Reset

To position of the picture to the factory settings

- 1) Press [LCD-MENU] to enter menu
- 2) Press [>] to select PC settings
- 3) Press [V] to select Position Reset
- 4) Then press [>] or [<] to move the picture up or down



- 5) Press [EXIT] to exit

DVD MENU OPERATION

HOW TO PLAY DVD'S

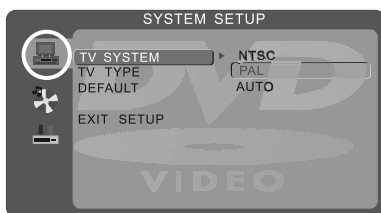
The DVD player has an automatic DVD feature which means when you insert a disc it will automatically switch source and start to play. If you disc does not play please refer to frequently ask questions section of the user guide.

SYSTEM SET UP

Adjusting TV System

Lets you adjust between NTSC, PAL, AUTO (PAL is default for the UK)

- 1) Press [DVD-SETUP] to enter menu
- 2) Press [>] to select TV System
- 3) Press [V] to select Default
- 4) Press [V] or [^] to highlight NTSC, PAL or AUTO
- 5) Press [OK] to confirm

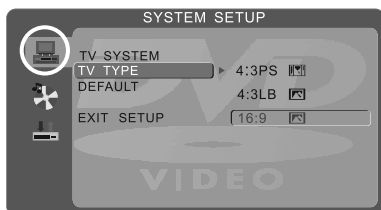


- 6) Press [DVD-SETUP] to exit

Adjusting Picture Format

This lets you select the format of the picture that is being shown between 16:9, 4:3 LetterBox and 4:3.

- 1) Press [DVD-SETUP] to enter menu
- 2) Press [>] to select TV System
- 3) Press [V] to select TV Type
- 4) Press [>] to enter menu
- 5) Press [V] or [^] to highlight 4:3PS, 4:3LB or 16:9
- 6) Press [OK] to confirm

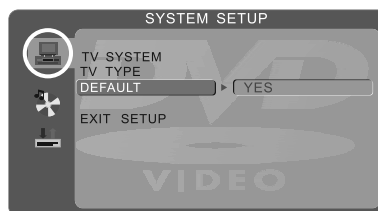


- 7) Press [DVD-SETUP] to exit

Returning to Default

This lets you switch the DVD menus show above back to Default settings

- 1) Press [DVD-SETUP] to enter menu
- 2) Press [>] to select TV System
- 3) Press [V] to select Default
- 4) Press [>] to enter menu
- 5) Press [>] to highlight Yes
- 6) Press [OK] to confirm



- 7) Press [DVD-SETUP] to exit

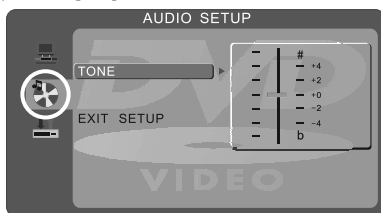
DVD MENU OPERATION

AUDIO SET UP

Adjusting Tone

Lets you increase or decrease the Tone of the sound

- 1) Press [DVD-SETUP] to enter menu
- 2) Press [V] to select Audio Set Up
- 3) Press [>] to enter menu
- 4) Press [V] to select Tone
- 5) Press [>] to enter menu
- 6) Press [V] or [Λ] to increase or decrease the tone
- 7) Press [OK] to confirm



- 8) Press [DVD-SETUP] to exit

DIGITAL SET UP

Adjusting Dynamic Range

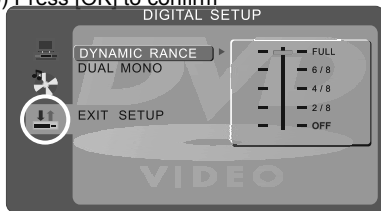
This is the difference between the quietest and loudest sounds. This setting works only with DVD discs recorded in Dolby digital.

FULL: Set this to listen with the range recorded on the disc.

4/8: Set this to listen with a range equivalent to a normal television.

2/8: Set this to listen with a smaller difference between the maximum and minimum volume.

- 1) Press [DVD-SETUP] to enter menu
- 2) Press [V] twice to select Digital Set Up
- 3) Press [>] to select Dynamic Range
- 4) Press [>] to enter menu
- 5) Press [V] or [Λ] to increase or decrease the Dynamic range
- 6) Press [OK] to confirm

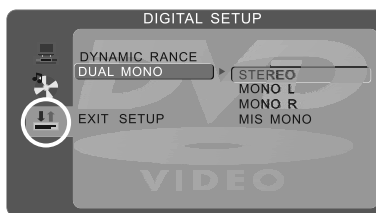


- 7) Press [DVD-SETUP] to exit

Adjusting the Sound

Lets you change the sound between Stereo, Mono Left, Mono Right and Mixed Mono.

- 1) Press [DVD-SETUP] to enter menu
- 2) Press [V] twice to select Digital Set Up
- 3) Press [>] to enter menu
- 4) Press [V] to select Dual Mono
- 5) Press [>] to enter menu
- 6) Press [V] or [Λ] to switch between Stereo, Mono L, Mono R and Mix Mono
- 7) Press [OK] to confirm



- 8) Press [DVD-SETUP] to exit

Changing Regions

This TV/DVD player is pre-set to play Region 2 DVDs. In the event you wish to use the TV/DVD in another country that uses different region discs, please visit www.skymediauk.co.uk. Select 'product support', 'Changing Region'



USING WITH SKY DIGITAL / VIRGIN MEDIA

You may wish to use your TV with Sky Digital, Virgin Media or another cable or Satellite box

There are a number of connection options, the best being connecting via SCART cable.

Connecting via SCART

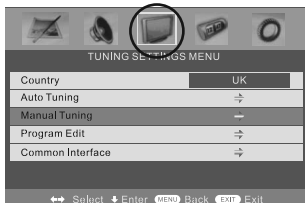
- 1) Connect the SCART cable from the Cable/Satellite Box to SCART of the TV
- 2) Press [SOURCE]
- 3) Press [V] or [/\] to select SCART
- 4) Press [OK]

The channel your Cable/Satellite box is displaying will now be shown on the TV.

You may wish to share your Sky Digital signal around the home by using an RF connection.

Connecting via RF

- 1) Connect the RF cable from the RF output socket of the sky/cable box to the 'RF IN' of the TV.
- 2) Switch the TV to analogue TV mode
- 3) Press [LCD-MENU] to enter menu
- 4) Press [>] twice to select Tuning Settings Menu
- 5) Press [V] to select Manual Tuning



- 6) Press [>] to enter Auto tuning
- 7) Press [OK] to start tuning

Once tuning is complete the first channel will appear. Press [CH+] to move through the channel until you find the Sky channel. The channel can then be moved if you wish, please refer to the Tuning Setting menu – Program Edit section of the manual.

USING WITH SKY DIGITAL REMOTE CONTROL (BSKYB) OR UNIVERSAL REMOTE CONTROL

You may wish to use your Sky Digital or a universal remote control to operate some of the functions of this TV. For this you require a 'code' that needs to be programmed into your Sky Digital or universal remote control.

For codes for universal remote controls, please visit our website where you will find the very latest information and codes.

For codes for Sky/Sky+Sky HD, please note that at the point of manufacture, BSKyB have not launched the code required for this model of TV. They are due to launch a new remote control which should include the necessary code to operate the functions of the TV during 2010 (called revision 9).

Please check our website for updates, alternatively, see below some alternative options of remote controls that are available.



One for All

Sky Originals

The One for All remote controls shown above will operate all of the functions of the Sky box in the same way the original remote control will, in addition, they will also operate the functions of this model of TV. The One for All versions are available to purchase from the helpline/website. The original Sky remote controls are shown for comparison purposes

If you require any further information, you can contact us:

www.skymediauk.co.uk
email - service@skymediauk.co.uk
Tel - 0871 2000 463

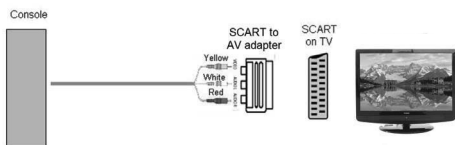
CONNECTING A GAMES CONSOLE

Connecting a games console can sometimes seem very difficult. We have simplified it to three options depending on the cables that you have.

Option 1 – Connecting via Scart to AV adapter

If you are supplied with a cable from the console which has YELLOW, RED & WHITE connectors you must connect via a SCART to AV adapter (Some console include this)

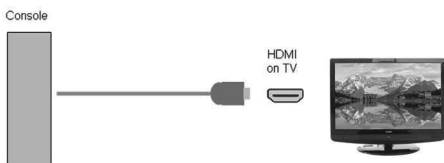
TV source should be set to SCART.



Option 2 – Connecting via HDMI cable

If you are supplied with a HDMI cable is the easiest option. A HDMI cable can output both video and audio and enables you to enjoy digital-quality video and audio with minimal loss of picture quality.

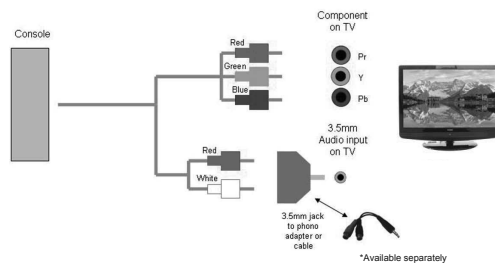
TV Source should be set to HDMI.



Option 3 – Connecting via Component cable

If you are supplied with a cable from the console which has RED, GREEN, BLUE, RED & WHITE connectors you must connect via Component (for picture) and by 3.5mm to phono cable (for sound).

TV Source should be set to Component.



FREQUENTLY ASKED QUESTIONS

Question:	Solution:
I have tuned in Digital TV but I am not receiving any or all of the channels and/or the channels I receive are breaking up	<ol style="list-style-type: none"> 1) Check you are in an area that can receive Freeview. Visit www.freeview.co.uk or call 08701 111 270. 2) Check you have a suitable aerial. Many indoor aerials will say they are digital ready, but you will not get a good signal 3) Consider purchasing a signal booster, it is much cheaper than a digital aerial and cures 70% of poor signal problems. 4) Failing the above for now use the analogue TV, until the signal becomes stronger in your area. <p>For best performance we recommend using an outdoor hi-gain digital aerial. If you are receiving some digital stations first try to connect a signal booster in between the TV and TV aerial socket</p>
The sound quality is high pitched?	Go into the sound settings menu as shown earlier in the manual and increase the level of the bass and decrease the treble
I have inserted a disc but it is not playing	<ol style="list-style-type: none"> 1) Ensure you have inserted put the disc in facing the correct way forward 2) Ensure the disc is clean and is not scratched 3) Some copied discs will not play. 4) Check the DVD is a region 2 disc – to change the region of the DVD player, refer to 'Changing Regions' in the DVD section of this user guide
The subtitles are switched on when I am watching a DVD	Each time you press [Subtitles] button you switch between the different languages. Off is one of the options. If you still have subtitles on, access through the DVD disc menu and switch off
I have connected the TV to my VCR via SCART but it is not recording	In addition to connecting via SCART, you should connect the aerial cable from the wall socket to VCR and another aerial cable from the VCR to the TV

If you are still experiencing problems please contact the Helpline
Customer Support/Technical Helpline
Sky Media UK LTD

Telephone: 0871 2000 463

Email: service@skymediauk.co.uk

Visit our web site www.skymediauk.co.uk for further Trouble shooting and frequently asked questions.

TECHNICAL SPECIFICATION

		LCD19-208, LCD19-208W	LCD22-208, LCD22-208W
Panel	Size (Inches)	19"	22"
	Resolution	1440 x 900	1680 x 1050
	Contrast Ratio	1000:1	1000:1
	Brightness cd/m ²	300	300
Input Signal	PC RGB	Yes	Yes
	RF	75 ohm Antenna / PAL-SECAM	
	Video	1 x SCART, 1 x S-Video, 1 x Component (YPbPr - 1080i)	
	Sound	1 x 3.5mm jack for PC, 1 x 3.5mm jack for YPbPr/S-Video	
	HDMI	1 (Up to 1080i)	
Speaker Output	Watts (RMS)	2 x 3	2 x 3
DVD player		Yes	Yes
Power	Voltage	100-240v 47-63Hz 1.5A 60W (Standby <2W)	100-240v 50/60Hz 1.5A 70W (Standby <2W)
Dimensions	Inc Stand	464W x 410H x 210D	523W x 440H x 210D
	Exc Stand	464W x 358H x 95D	523W x 388H x 95D
Weight	Net (Kgs)	5.0	5.3
	Gross (Kgs)	6.0	6.5

INDEX

7 day TV Guide	20	Manual Tuning	17
Adjusting Country	17	On Screen Display Language	19
Analogue TV teletext	21	On Screen Display Timer	18
Attaching/Removing the stand & wall mounting	9	Phase	23
Auto Tuning	17	Picture Format	19
Balance	16	Picture Format - DVD	24
Bass	16	Picture Mode Presets	14
Blue Screen	19	Position Reset	23
Brightness	14	Program Edit / Channel Position	17
Changing Regions	25	Remote control buttons and their functions	11
Child Lock / Key Lock	19	Reset Television	19
Clock	23	Return to Default	24
Colour Settings	14	Sharpness	15
Colour Temperature	15	Sky Digital	27
Common Interface Slot	18	Sleep Timer	18
Configuration of Screen	23	Sound Mode Presets	16
Connecting to a PC	22	Source	13
Connecting to a games console	28	Technical Specifications	30
Contents	7	Tint	15
Digital Switchover information	2 - 3	Tone	25
Digital TV teletext	20	Treble	16
Dynamic Noise Reduction	15	Trouble Shooting	29
Dynamic Range	25	TV buttons and their functions	12
First Time Installation	19	TV System	24
Guarantee Information	1	Vertical Position	23
Horizontal Position	23	Volume	16
Index	31	Warnings	4 - 5
Initial Set Up	10	What is included in the box	8
Inputs and Connections	13		

OPTIONAL ACCESSORIES AND SPARE PARTS

If you need to order replacement parts for your TV, please visit our web site or call the helpline.

If you wish to wall mount your TV, we have a range of fully tested and compatible wall mounts available to order from the helpline or via our web site.

If you wish to purchase a Sky or Sky+ remote control that includes the latest software/codes to operate both your Sky Box as well as this TV, these are available to order from the helpline or web site. Our Sky / Sky+ remote controls operate your Sky or Sky+ box in exactly the same way your current Sky / Sky+ remote does and our versions also look very similar to the Sky equivalent models, albeit slightly smaller in size, they will also operate many of your TV's functions including Power on/off, channel up/down, volume up/down as well as many other functions.



Replacement remote control



Our Sky/Sky+ Remote controls



Wall Mounts





TECHNIKA ADVANCED