

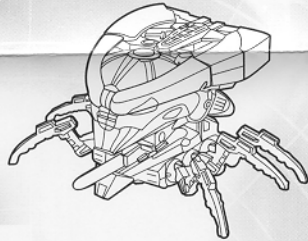
TRANSFORMERS

ROBOTS IN DISGUISE™

AGES 5+
25902/25900 Asst.



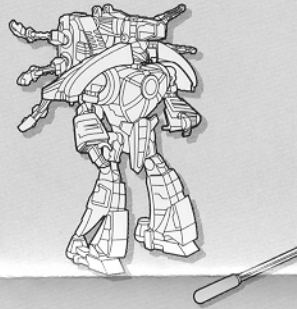
MEGABOLT™



INSTRUCTIONS

P/N 629080000

SET INCLUDES:



WARNING:

CHOKING HAZARD—Small parts.
Not for children under 3 years.

transformers.com



™, ® & © 2003 Hasbro.
All Rights Reserved.
© denotes Reg. U.S. Pat. & TM Office.
Manufactured under license from
Takara Co., Ltd. © TX/NAS.

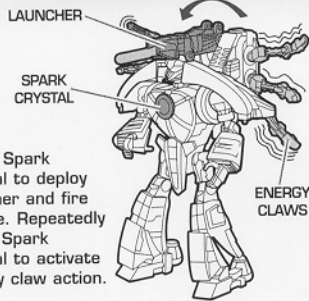
NOTE: Some parts are made to detach if excessive force is applied and are designed to be re-attached if separation does occur. Adult supervision may be necessary for younger children.

CHANGING TO BATTLE PLATFORM

▶ 1



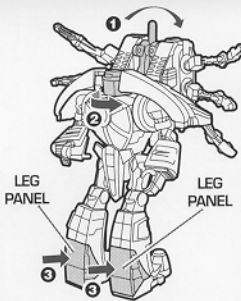
Load missile in back with notch toward rear of figure.



Press Spark Crystal to deploy launcher and fire missile. Repeatedly press Spark Crystal to activate energy claw action.

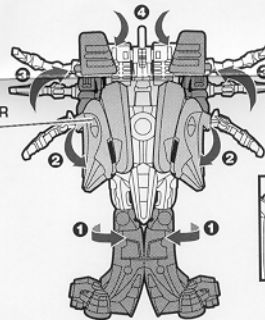
▶ 2

Return launcher to continue conversion. Rotate robot head and close leg panels.



▶ 3

SHOULDER PANEL

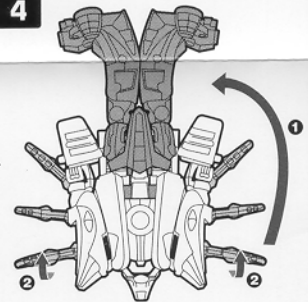


Rotate lower legs at knees. Position shoulder panels as shown. Raise arms above head. Rotate hands down, tucking fingers into upper arms.



SHOULDER HINGE

▶ 4



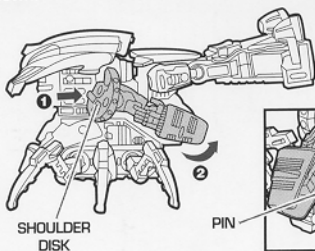
Pivot lower torso down slightly. Rotate hips and legs completely around. Rotate energy claws.

▶ 5

Pivot shoulder disks outward and back, allowing arms to rotate under hips. Fit pins on lower arm shields into holes as shown.



HOLES



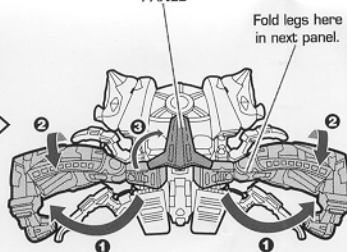
SHOULDER DISK

PIN

▶ 6

TOP PANEL

Fold legs here in next panel.

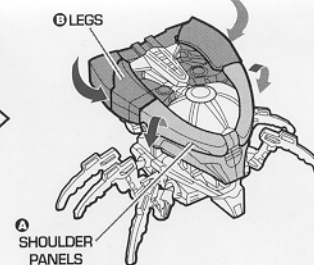


Move legs apart and rotate all leg parts into position shown. Rotate top panel.

▶ 7

Ⓐ LEGS

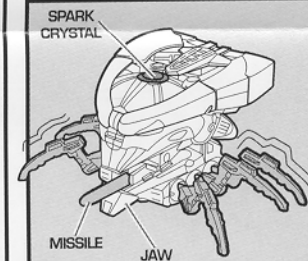
Ⓐ Fold small link on shoulder disk down and close shoulder panels around central housing, pushing pins into holes at front.



Ⓐ SHOULDER PANELS

Ⓐ Bending legs at joint shown in previous panel, fold inward to position shown. Push rib into slot at rear bottom of robot feet to hold together.

BATTLE PLATFORM MODE



MISSILE JAW

Press down and roll for crawling leg action. Lower jaw to fire missile by pressing Spark Crystal.

Reverse the order of the instructions to convert back into robot.