



Since 1987

ViewCam

User's manual

Model :PK-635

www.a4tech.com

Contents	page
Introduction	2
System's Requirements	2
Package Include	2
USB PC Camera	3
Specification	3
Installing Camera's Driver	4
Checking connection of your camera	13
Uninstalling Driver	13
VP-EYE program	14
Troubleshooting	24

I Introduction

Welcome to the World of Digital Imaging.

The following information will guide you to install and use the PC Camera to its full capabilities.

I System's requirements

Personal Computer, Laptop, Desktop, or IBM Compatible Computer with Pentium 166MHz minimum, and with an active USB (universal serial bus) port.

Windows 98/ME/2000/XP, CD-ROM drive, color monitor, mouse and keyboard. For videoconference, Internet connection must be equipped.

I Package includes

PC Camera
(With USB cable)



CD Installation Disc & User's Guide



I USB PC Camera



I Specification

Image Sensor:	1/4 " CMOS, 640×480pixels
Frame Rate:	30fps@640x480, @600x800, @320x240, @160x120
Lens:	F=2.4, f=4.9mm
View Angle:	54 degree
Focus Range:	Automatic focus, 10cm to infinity
Exposure Control:	Automatic
White Balance:	Automatic

Still Image Capture	800x600, 640X480, 352x288, 320x240, 176x144,
Res.:	160x120
Flicker Control:	50Hz, 60Hz and None
Computer Port	USB port

I Installing camera's driver

Driver's Installation Instruction for Windows 98/ME/2000/XP

NOTE: Please Uninstall All Previous Installed WEBCAM BEFORE

Installing A4 TECH ViewCAM. DO NOT CONNECT A4 TECH

ViewCAM TO THE COMPUTER UNTIL ITS DRIVER IS INSTALLED!

1. Insert the included CD into the CD-ROM: The Auto-run Menu Window will popup, move the mouse cursor to and click on "Install viewCAM".

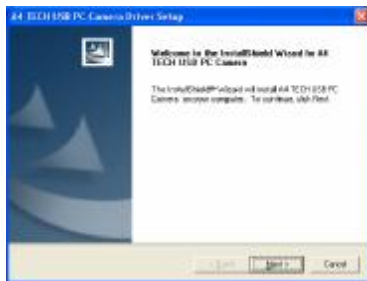
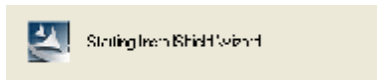


2. Please select your ViewCAM model and click on the product image to install (As the right image). Then dialogue box will appear on the computer screen as below:

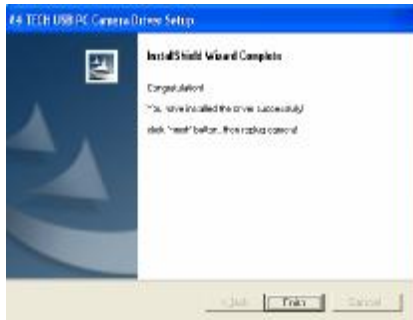


3. Follow the on screen instruction to complete the installation

process



4. When the Installation Process is completed



5. Click “Finish” to complete installation. Now, the shortcut Amcap and Zoom images will appear on the computer



6. Plug the PC Camera’s USB cable to the computer’s USB Port, and restart your computer.

Amcap Usage

After installation of view cam driver, you can pre-view image and set the adjustments for the properties sheet through the image application software which comes with the product.

Image-preview



Click **Hamcap** button on the desktop and the Amcap image application will pop-up or from “start” to “application” “A4TECH USB PC Camera H”, and click “Amcap” by mouse the application image will appear shown as below





if Amcap image fails to appear, please select the preview below
“ Options “shown as follows :



Device description

Go to “Devices” and select “A4 Tech USB PC Camera H”.
(Refer to below diagram)

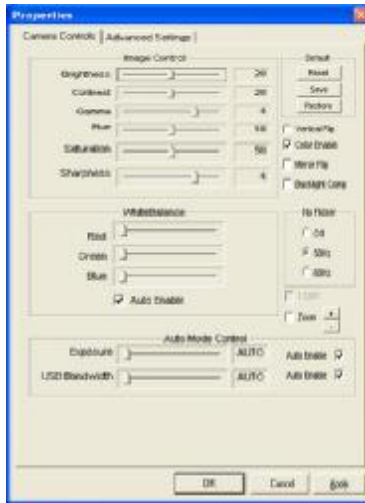


Properties page configuration

Go to “Options”, then select “Video Capture Filter...”(Refer to below diagram)



The Properties configuration page will pop-up as below:



Most settings can be adjusted here


Advanced settings


PK-5 offers the image special effect and video special effect settings for the users, our design engineers have defined 15 special effect settings, by using them, it will allow you to operate easily and edit the images more efficiently. Shown as below.



Digital View Cam adjustable focus description

PK-5 can provide 10 times adjustable focus function under CIF(352×288) resolution, accompanying digital adjustable

control pole  . Level-sliding zoom image and the special filter make images more clear, See the control page and select

the options after adjusted focus '+' , ' — '  or select digital

adjustable focus control pole



Before adjustment



after adjusted

NOTE : It totally supports QQ、MSN ...etc video chat software under 352*288、320*240、176*144、160*120 ...etc resolutions.

I Checking connection of your camera

1. Plug the USB cable to the computer's USB Port.
2. Restart your computer when Installation is completed.
3. Double click "My Computer" icon->Control Panel->System->Device Manager ->Imaging Device; if you see "A4 Tech USB PC Camera", then your camera is now installed.

For Windows 2000 /XP:

Double click "My Computer" icon->Control Panel->System->Hardware->Device Manager->Imaging Device; if you see "A4 Tech USB PC Camera H", then your camera is installed.

I Uninstalling Driver

Click "Start" from the task bar and choose "Programs".
Select "A4 Tech USB PC Camera H" -> "Uninstall" and follow the instructions.



I VP-EYE

The latest version of VP-EYE offers a new look that makes image editing much more fun and intuitive. There are a lot of improvements and enhancements that comes with VP-EYE 4.0 , here are some of the new features that you can expect in VP-EYE 4.0.

1. Enter the setup interface of the ViewCam driver installation



2. Click "VP-EYE" for increment application installation, the below interface as shown in the picture will automatically pop up for your setup, according to the four rotundity buttons displayed by the interface.

Note: please wait 20—60 seconds in working order if you click "VP-EYE", because your computer need time to read the date of this program.



- I Click " program assembly names " by moving mouse cursor , now ,you can name or modify the default name under " My Computer -Start -all Programs " for the convenience to run.
- I When you click " VP-EYE application " by moving the mouse cursor ,this means that you can start to install 7 usual applications in "VP-EYE" for the default installation.
- I Click " Installation" option by moving mouse cursor , this means that you can execute the virtual & optional installation as per usual applications in "VP-EYE "
- I Click "Select catalogue" by moving mouse cursor. this means that you can select the disk types and directory for installation.



1. Monitoring a view (Video Monitor 2.0)

The Video Monitor can be used in many ways, such as video monitoring, recording and playback.



Close– close the Video Monitor

Message indicator – show whether you have new messages

Security indicator – show whether security mode is working

Minimize– minimize the Video Monitor window to an icon on the toolbar

On top/Not on top– force Video Monitor always on top of the desktop or

not.

Setting– change the video monitor settings (General, Timer, Security, Message, Alarm)

Playback– retrieve captured image data

Help– explain how to use Video Player

Message– start recording a video message

Security– enter into security mode

2. Recording a Video (Video E-Mail)

The Video E-Mail is your digital recorder. Set the video size and start recording. you may attach the player program mmvem.exe while sending the e-mail. This program decompresses the video and audio data, shows the video on your screen. It is easy to download the player from our web site if someone can not open the VEM file created by Video E-Mail program.

3. Playing with your camera (Video Games)

There have three games (Gophers, Black Jack, and Fishing)in VP-EYE. All three work with your camera.

Important: For best results playing any of these games, move the camera to a position where you can easily move your hands in front of the camera. Before the game logo appears, the camera will be calibrated. During the calibration, it is important not to move the camera. After proper calibration, the camera will be more capable of detecting your hand movements.

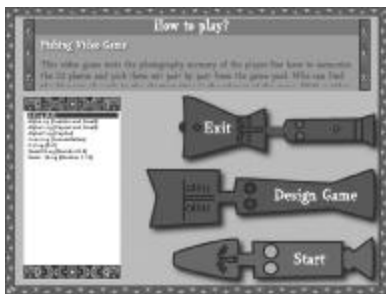
Gophers: Requires a camera to play. Object of the game is to hit the gophers. Beware of snakes.



Black Jack: Requires a camera to play. Object of the game is to get 21 or less. Be careful, you have to have more points than the dealer to win. Same rules as Las Vegas 21.



Fishing: Requires a camera and a mouse to play. Object of the game is to find matching photo cards. Use the camera to make your own photo cards, then send your game to a friend.



4. Making a photo album (Photo EZ)

Use Photo EZ to create one or more photo albums. Each photo can include additional information like date, author, place and other

comments. Looking for a certain photo in all your albums? Search will look for all photos matching your search criteria. In addition, you can apply basic and special effects to your photos.



5. Sending a greeting card (Photo Greeting Cards)

Use Photo Greeting Cards to create electronic cards. Photo Greeting Cards has 20 categories containing over 100 different cards. Give it a try! Select a card, add some text, add your voice then make some final changes. There you have it, an electronic card! Next, send it to your family or a friend. Select a category then select a card.

- **Photo**— add a photo, maybe a snapshot of you

- **Record**– add background music or record your voice
- **Flip**– flip your photo side to side
- **Scale scroll bar** – adjust the size of your photo
- **Opacity scroll bar** – adjust the background of your photo
- **Save**– save your card to a file
- **Print**– print your card on paper
- **Email**– send your card to a friend



6. Having fun with your photos (Photo Special Effects)



Use Photo Special Effects to add special effects to your photos. Photo Special Effects has more than 50 different special effects. The effects are separated into color manipulation, transformation and blurring categories. It is fun, easy and fast to add special effects to your favourite photos. Give it a try!

7. Digital Movie Producer



It is a powerful and easy-to-use program for editing and converting video data. The user interface is simple. It may convert the photos acquired by digital camera into a video file. You may also add photo in the video stream or put two video streams into one. It allows you to add music and record the sound into the video file. Anyone can enjoy the fun of making video file by a few steps of this program!

If you need more information about VP-EYE please log onto website : <http://www.mmedia.com.tw>

I Troubleshooting

Question 1: Computer can't detect the View Cam

Solving Method: Check if computer's OS (Operating System), BIOS, USB Port or installation errors occurs.

Steps: Windows 95 doesn't support USB port. You have to update your OS to Windows 98 or above to support USB port and ensure BIOS Setup and USB settings are available. If the problem still occurs, please try connecting the USB ViewCam to your machine via another USB socket.

Question 2: My video image is too dim or too light.

Solving Method: Adjust the brightness and contrast background.

Steps: Because the ViewCam can be easily affected by light, therefore, we suggested proceeding from usage environment and screen object such as increasing object brightness or moving light source.

Question 3: Color is defective

Problem: After installation, if you found the image is not as expected as you want. Is the color part defective?

Solving Method: Adjust the color settings related to video snapping course options or have the color settings related set as "default"

Question4: Blank screen or black screen

Symptom: During the usage course after the image frame pops up, the Blank screen or black screen will occur?

Method 1: Make sure that the ViewCam driver is installed fine.

Method 2: Ensure the "Preview" under "Option" tab is selected and applied.

Method 3: If your computer OS is first version of WIN 98, then you

need to update the OS to WIN98 SE or above or download DirectX8.0 or version above patch application from site then reset your computer.

Question 5: Bloom screen occurs during the course of usage

Method 1: Check if USB power is clean, because the ViewCam is easily affected. If the USB power wave is too large, then such problem will occur. You may use another computer to test it.

Method 2: Check if the driver conflicts with other computer hardware devices.

Method 3: Check the ViewCam driver and match it with ViewCam model; in addition also use other video cards to confirm if the current video card and its driver are incompatible with ViewCam.

Question 6: The ViewCam can't work normally under the laptop/notebook

Because the USB ViewCam can easily conflicts with video card, therefore, please follow this path: " my computer----> control panel -----> system-----> device management ----->Video Card

And other pointing devices ----->A4tech View Cam ", then define and double-click "A4tech.port View Cam ". After opened a

window, please check the tab "resource" to find the conflict information. If it is conflicted with other video card, you should try to change an IRQ of them.

Question 7: Remote video isn't smooth as expected

This issue is caused by two reasons:

The actual net band with is not enough and you are suggested to modify the conference properties to decrease the video occupying bandwidth or to reduce the contemporaneous windows numbers

2) Please check the computer CPU space occupying rate and if it is too high then please decrease it to reduce the contemporaneous windows numbers.

Question 8: How come I couldn't hear any sound via MSN Messenger even after the successful installation of the driver?

1. Maybe the micro voice is not enable, so please click the voice icon in the system tray at the right bottom of computer screen to check if the micro voice is enable, if not, please enable it in the control volume.

2. Sometimes, the MSN messenger is too old to support both sound card and your ViewCam, so please upgrade your MSN

messenger to support your ViewCam and sound card.

Question 9: How come the system always asks me to install the driver while I have successfully installed?

A: Because you have plugged the ViewCam before installation. Please follow the steps below to do the installation again.

1. Unplug the ViewCam from your computer
2. Uninstall the former AMCAP driver
3. Restart your computer;
4. Install the driver;
5. Restart your computer;
6. Plug the ViewCam into your computer and let it search the hardware;
7. Restart your computer, and you should find it is ok now!

Question 10: There hasn't any prompt authentication through the Microsoft micro sign in the installation process, the system maybe unstable if continue installing possibly. How deal with it?

Method: please still click " continue to install" .

Because this camera could not cause the unstable status of

computer system.

TECH SUPPORT

For tech support, please visit our website at www.a4tech.com or email us at support@a4tech.com