



Competitive Comparison

Xerox Phaser® 8560MFP vs. HP Color LaserJet 2820/2840AiO

The Phaser 8560MFP is a true workgroup MFP—without compromise

- Superior performance
- Better print quality and more consistent color
- True concurrency
- More paper capacity
- Legendary solid ink ease-of-use
- Automatic two-sided printing, copying and scanning
- Better productivity features
- Xerox Total Satisfaction Guarantee




PRINT FEATURES	Phaser 8560MFP	HP LaserJet 2820/2840AiO
Faster print speed • Greater productivity and ability to support larger workgroups	Up to 30 ppm color / black	Up to 4 ppm color Up to 20 ppm black
Faster first-page-out time¹ • Less waiting so you can meet those fast-approaching deadlines	As fast as 6 seconds (print) / 15 seconds (copy)	As fast as 35 seconds color As fast as 24 seconds black
Automatic two-sided printing • Save time and money...and a lot of effort	Available with print, copy and scan functions	Not available with print, copy, and scan functions (manual only)
Better media handling • Get more flexibility and creative freedom with your choice of heavier media types	Tray 1 (MPT): 60 to 220 gsm Main Tray: 60 to 120 gsm	MPT: 60 to 177 gsm (non-HP papers) Up to 220 gsm (HP papers only) Main Tray: 60 to 105 gsm
Larger media capacity • Over 4-times the maximum paper input capacity for fewer interventions and the ability to load different media types in separate trays	Standard input: 625 sheets Maximum input: 1,675 sheets Up to 4 media trays	Standard input: 125/375 sheets Maximum input: 375 sheets Up to 2 media trays
Superior print quality and more consistent color • Solid ink technology generates incredibly smooth and consistent color and print quality. Details and registration are amazingly accurate. Color control is an intuitive snap with its automatic Xerox color options	Vibrant finish Consistent color	Flat finish Exhibits banding and poor transfer
Better language support • Genuine Adobe® PostScript® 3™ for truer, more accurate printing	Adobe PostScript 3, PCL 5c emulation, direct PDF printing	PostScript 3 emulation, PCL 6
COPY FEATURES		
Faster copies from ADF¹ • Spend less time waiting for your copies—in both color and black-and-white	11 ppm color 11 ppm black	4 ppm color 2 ppm black
Dual-side ADF¹ • Automatic two-sided copying saves time and boosts productivity while lowering costs	Up to 9 sheets per minute in color/black (18 ppm effective throughput)	Not available: single-side copying only
Simple and intuitive control panel • Spend less time learning and more time being productive	Large 6-line LCD display Indicator lights for status	Small 2-line display No indicator lights
Standard and advanced copy features • The 8560MFP offers greater flexibility with powerful features that are often found only in high-end copiers • The HP 2800 series lacks many of the advanced features found in high-end copiers	Original Type: (Text, Graphics, Mix, Photo); Reduce/Enlarge; Lighten/Darken; Color/Black; Output quality: (Fast, Standard, Enhanced, Photo) ;Simplex/Duplex: (2-1, 2-2, 1-2, 1-1); Edge erase; Image shift; N-up; Booklet; Posters; Gutter erase; Password protect color copy access; Color balance; Cover Pages; Auto Cropping; Background Mask	Original Type: (Draft, Text, Mixed); Reduce/Enlarge; Lighten/Darken; Color/Black; Simplex: (1-2, 1-1); N-up: (2 up, 4 up)
More versatile copying • With the Phaser 8560MFP there is no need to worry about what tray is used for copying legal-size originals	Flat Bed and ADF: up to legal size	Flat Bed: up to letter-size only Requires ADF for legal-size originals

1. Times based on Phaser 8560MFP and HP 2840AiO testing (mixed graphics and text documents; default quality mode).



Competitive Comparison

SCAN FEATURES	Phaser 8560MFP	HP LaserJet 2820/2840AiO
Faster ADF scan speeds <ul style="list-style-type: none"> The Phaser 8560MFP uses a dual-head scanner to scan both sides of a page at once—a huge benefit over HP's single-head scanner 	Color: 15 ppm Black: 15 ppm 	Color: 2 ppm Black: 5 ppm
More scan destinations <ul style="list-style-type: none"> Unlike the 2800 series, users can scan a file to the Phaser 8560MFP device's hard drive and reprint it at a later time 	Scan to: PC / Mac, Mailbox, TWAIN, Email (via Xerox Scan Utility), Desktop, Public / Private folders	Scan to PC folder, email, network
More file formats <ul style="list-style-type: none"> Unlike the HP device, the Phaser 8560MFP does not require any third-party scanning software to output different file formats 	BMP, GIF, JPEG, TIFF, PDF	JPEG only (scanning multipage documents requires TIFF or PDF formats)
FAX FEATURES		
PC Fax <ul style="list-style-type: none"> The Phaser 8560 makes faxing easier by utilizing the same driver that users are familiar with By contrast, HP requires the user to install a separate driver for printing and faxing 	Embedded in print driver for simplicity	2820: Fax not available 2840: Requires a separate fax driver
More speed / group dials	Up to 200 / 100 dials	Up to 120 / 20 dials
Higher fax resolutions	Up to 400 dpi	Up to 300 dpi
SYSTEM FEATURES		
Faster processor	600 MHz	264 MHz
More memory <ul style="list-style-type: none"> Over five-times the standard memory and four-times the maximum memory means the Phaser 8560MFP can handle more complex tasks quicker and more reliably 	512 MB standard 1 GB maximum	96 MB standard 244 MB maximum
Hard drive	40 GB standard	Hard drive not available
MFP vs. All-in-One <ul style="list-style-type: none"> Unlike the HP device, the Phaser 8560MFP can print, scan, copy, and queue print jobs concurrently, as well as retrieve scan jobs while performing these functions 	True multitasking	No multitasking
Better device management <ul style="list-style-type: none"> Xerox offers automated self-help tools—reduce support requests to the help desk If the Phaser 8560MFP needs attention, it will provide detailed and graphical onscreen alerts—or connect the user to the same extensive Knowledge Base that Xerox technicians use 	PrintingScout on-screen alerts, PhaserSMART on-line troubleshooting, Job Accounting, Usage Analysis Tool, Email alerts on supplies status, Configuration SIM for hot swapping configuration settings between devices	HP Toolbox provides limited alert functionality (Lab results indicate that it is not consistent)
Easy driver and software installation¹ <ul style="list-style-type: none"> With the Phaser 8560MFP, installation of Print, Network Scan and PC Fax drivers is only five mouse-clicks away With the HP 2800 series, initial install of only the print drivers consisted of 20 unpack screens plus 13 driver-decision screens 	1:40 using Walkup Technology	22:40 + 1 call to HP help desk to disable computer protection + 1 reboot
Easy driver software removal <ul style="list-style-type: none"> Unlike the HP 2800 series, the Phaser 8560MFP requires no extra programs to remove its software 	1:23 with no reboot	Over 13 minutes using 2 HP programs, 1 Windows program and 2 PC reboots
Security highlights <ul style="list-style-type: none"> Secure Print on the Phaser 8560MFP means “your eyes only” printing—each job is stored on its hard drive until a PIN is entered. And with Image Overwrite, a user's sensitive data will be permanently erased when the user is finished Scan to the Phaser 8560MFP device's Public or Private Folders as well as password protect access to color copying Use the Phaser 8560MFP device's Host Access List to limit computers that can print or scan to the device 	Color access restrictions, SSL – encrypts user data, Secure printing via hard drive, Color copy access restriction via PIN, CWIS: user-type-access-restrictions for both embedded pages as well as front panel menus and content. Personal Print (store secure jobs for later use!)	Secure printing only via memory

1. Times based on Phaser 8560MFP and HP 2840 testing (mixed graphics and text documents; default quality mode).

Competitive Comparison

Other Xerox Phaser 8560MFP Advantages

Simple design = simple maintenance

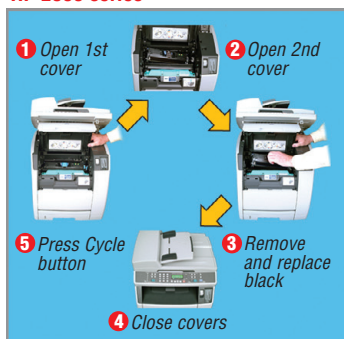
The 8560MFP device's solid ink technology is legendary for its ease of use. Loading ink is as easy as loading a stapler — even a child can do it.

The HP device, as you can see in the photo series below, is complicated. Opening its front cover engages dozens of breakable plastic moving parts. And there are far more steps required to replace toner cartridges than for the Phaser 8560MFP.

8560MFP



HP 2800 series



Black Toner



Yellow Toner



Magenta Toner

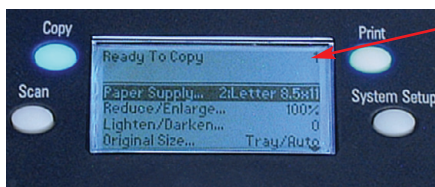


Cyan Toner

Front panel display eliminates guesswork

The 8560MFP device's front panel display is larger and shows more helpful information, including animated graphics to aid in maintenance.

The HP 2800 series' front panel is smaller, provides less information at a glance, and requires more button-pushing to find what you need.



Xerox 8560MFP

6-line display complete with animations

Limited 2-line display with no animation



HP 2800 AiO series

Real-world performance

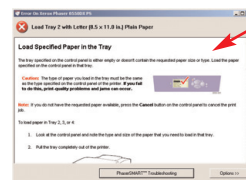
The 8560MFP has a dramatic performance advantage over HP's LaserJet AiO in both specifications and most importantly real-world performance.

	8560MFP	HP 2800 series
Monochrome e-mail (1 page) ²	8 seconds	24 seconds
Excel spreadsheet (1 page) ²	8 seconds	35 seconds
Real estate PDF (2 pages) ²	15 seconds	37 seconds
PowerPoint presentation on paper (8 pages) ²	49 seconds	295 seconds
Complex multilayered file ²	48 seconds	493 seconds

²All pages printed in default print mode on letter-size media.

Xerox PrintingScout

The 8560MFP device's proactive PrintingScout tool provides instant, detailed, and graphical on screen alerts with instructions on what to do. Advantages include productivity gains plus reduction in support requests to the help desk.



Xerox PrintingScout

Easy-to-understand instructions get users printing fast