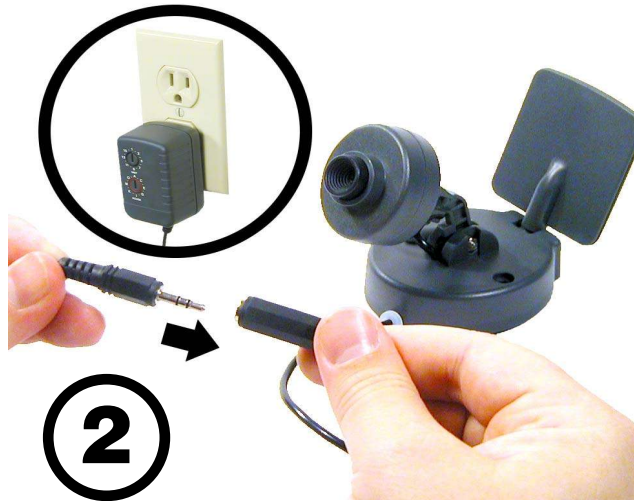


Quick Start

Your camera is ready to go out of the box! All you have to do is:



You can get more help with your XCam2 Wireless Camera on the X10 web site:

<http://www.x10.com/support>

GUIDE:
IN58A



Copyright 2002 X10 Wireless Technology, Inc. All rights reserved.

Set the camera up near your TV for immediate results!