

**BIONAIRE**

**PERMAtech™** air cleaner

MODEL: BAP1552-CN



Read instructions before operating.  
Retain for future reference.

**Instruction Leaflet**

**INFO-LINE**

If after having read this leaflet, you have any questions or comments on your air cleaner, call **1-800-253-2764** in North America. 122336/9100040003022

## ▲ AIR CLEANER SAFETY

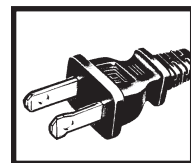
### PLEASE READ AND SAVE THESE IMPORTANT SAFETY INSTRUCTIONS

When using electrical appliances, basic safety precautions should always be followed to reduce the risk of fire, electric shock, and injury to persons, including the following:

- Read all instructions before using appliance.
- If the filter is covered by a bag when shipped: remove plastic bag before use.
- Keep the cords out of heavy traffic area. To avoid fire hazard NEVER put cords under rugs, near heat registers, radiators, stoves or heaters.
- To protect against electrical hazards DO NOT immerse in water or other liquids. Do not use near water.
- Close supervision is necessary when any appliance is used by or near children or disabled persons.
- Always unplug the air cleaner before moving it, opening the grill, changing the filters, or whenever the appliance is not in use. Be sure to pull by the plug and not the cord.
- NEVER drop or insert any object into any openings.
- Do not operate any appliance with a damaged cord or plug, if motor fan fails to rotate, after the appliance malfunctions, or if it has been dropped or damaged in any manner. Return appliance to manufacturer for examination, electrical or mechanical adjustment or repair.
- Use appliance only for the intended household use as described in this manual. Any other use not recommended by the manufacturer may cause fire, electrical shock or injury to persons. The use of attachments not recommended or sold by Jarden Consumer Solutions may cause hazards.
- Do not use outdoors.
- Never block the air openings, or place on soft surface, such as bed or sofa, as this could cause the unit to tip over thus blocking the air intake opening.
- Keep appliances away from heated surfaces and open flames.
- DO NOT attempt to repair or adjust any electrical or mechanical functions on these appliances. Doing so will void the warranty. The inside of these appliances contain no user serviceable parts. All servicing should be performed by qualified personnel only.
- **WARNING:** To reduce the risk of fire or electrical shock, DO NOT use these appliances with any solid-state speed control device.
- DO NOT place anything on top of these appliances.

## PLEASE SAVE THESE INSTRUCTIONS

### CONSUMER SAFETY INFORMATION



THIS APPLIANCE HAS A POLARIZED PLUG (one blade is wider than the other). To reduce the risk of electric shock, this plug is intended to fit in a polarized outlet only one way. If the plug does not fit fully in the outlet, reverse the plug. If it still does not fit, contact a qualified electrician to install the proper outlet.

### DO NOT DEFEAT THE SAFETY PURPOSE OF THIS POLARIZED PLUG IN ANY WAY.

The length of the cord used on this product was selected to reduce the hazards of becoming tangled in, or tripping over a longer cord. If a longer cord is necessary an approved extension cord may be used. The electrical rating of the extension cord must be equal to or greater than the rating of the air cleaner. Care must be taken to arrange the extension cord where it cannot be pulled on by children or accidentally tripped over.

### IONIZER

Your Air Cleaner has an independently controlled ionizer, which, when turned on, releases negative ions into outgoing filtered air. Ions are tiny particles that carry a positive or negative charge. These ions exist naturally around us, in the air, water and ground. Both positive and negative ions are colorless, odorless and completely harmless.

Negative ions help the air purification process by attaching themselves to very small airborne particles in the room. These particles take on a negative charge and may join with positively charged particles such as dust, pollen, smoke and pet dander to form larger particles that are then more readily captured by the filter system, or they may be attracted to positively charged surfaces like walls or floors.

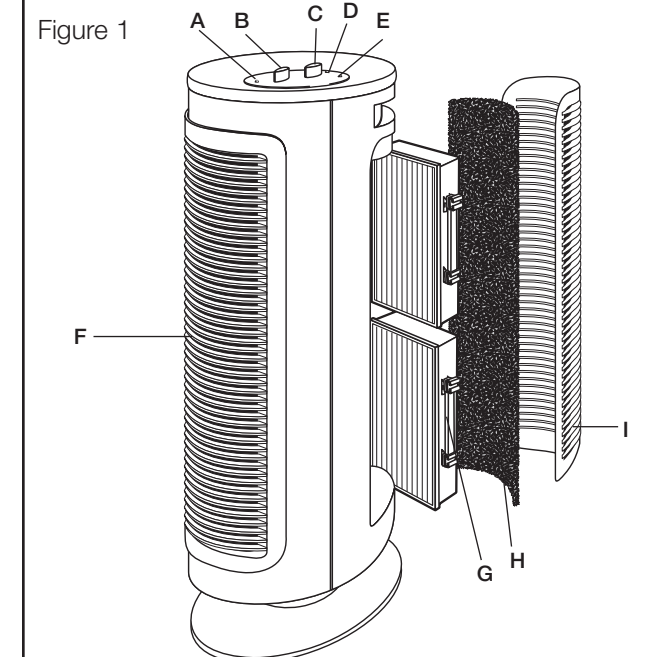
You may also note after extended use, that dust may have collected around the grills or front panel. This is from the ionization affect caused by the negative ions exiting from the air outlet. This is additional evidence of the air cleaning effectiveness of negative ions. The dust can be easily removed with a clean, damp cloth or soft brush.

**NOTE:** It is important to clean the filter at the recommended intervals. Using the ionizer in conjunction with dirty filters may result in dirty particles exiting the air cleaner and being attracted to walls, carpets, furniture or other household objects. These dirty particles may prove very difficult to remove.

## BEFORE USE

1. Carefully unpack your air cleaner.
2. Select a firm, level surface with no obstructions to the air inlets or outlets.
3. If the filter is covered by a bag when shipped, remove plastic bag before use and place filters into unit (See INSTALLING THE FILTERS).

Figure 1



- |                           |                             |
|---------------------------|-----------------------------|
| A. Power Indicator        | F. Filtered Air Outlet      |
| B. Speed Control          | G. PERMAtech™ Filter(2)     |
| C. Ionizer Control        | H. Washable Foam Pre-Filter |
| D. Filter Indicator Light | I. Inlet Grill              |
| E. Ionizer Light          |                             |

## OPERATING INSTRUCTIONS

### IMPORTANT:

- Remove all plastic bags from filters before use.
  - DO NOT POINT FILTERED AIR OUTLET TOWARDS WALL.
1. Plug into a 120V AC electrical outlet.
  2. Select the desired operating speed. Bionaire® Air Cleaners have three speed settings. You can select from HIGH (⚡), MEDIUM (⚡) or LOW (-) by moving the switch to the desired setting.
  3. To release negative ions into the filtered air, move the ionizer switch to ON (☞) and the light will illuminate.

4. For optimum air filtration, it is recommended to operate the air cleaner continuously. Its rugged motor has been designed to give many years of use.

For continuous use, it's recommended to operate the air cleaner at the MEDIUM (⚡) setting. For quieter operation or use in a bedroom, select the LOW (-) setting. When high levels of air pollution are present, select the HIGH (⚡) setting to quickly circulate and filter the room air.

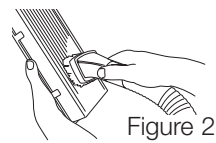
### CLEANING THE PERMAtech™ FILTER

The PERMAtech™ filter is designed to never need replacement. However, we recommend regular cleaning for optimal performance.

- Every few weeks, check the condition of the filter.
- After approximately 3 months of operation, the Filter Indicator Light will alert you to clean the filter before further use.

### TO CLEAN THE FILTER:

1. Turn off and unplug the air cleaner.
2. Remove the air inlet grill by pulling on the tab.
3. Remove and examine the foam pre-filter.
  - If it has collected dust or lint, remove and wash it in warm soapy water. Rinse and drip dry thoroughly before placing it back into the grill inlet.
4. Check the condition of the PERMAtech™ filters and remove if dirty.
5. Clean the PERMAtech™ filter.
  - Using your vacuum cleaner, run the brush attachment along both sides of the filter and clean between the pleated layers (Figure 2).



**IMPORTANT: Do not use water, household cleaners or detergents to clean the PERMAtech™ filter.**

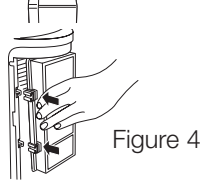
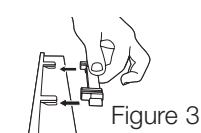
**The filter may appear discolored, even after vacuuming. This is normal and does not affect performance in any way—a new filter is not necessary.**

**If the filter becomes damaged during cleaning, call 1-800-253-2764 to order replacements.**

### REINSTALLING THE PERMAtech™ FILTER AFTER CLEANING

**NOTE:** Use hang tab and filter clips to ensure the filter attaches properly.

1. Make sure the hang tab is securely in place. Align the clip on the top of the PERMAtech™ filter with the rails on the inside of the unit. Gently slide the filter onto the rail (see Figures 3 and 4).
2. Place air inlet grill back onto unit securely.
3. Reset the Filter Indicator Light by inserting a small object (such as a pin or paperclip) into the hole marked (⊙).



### TIPS AND TROUBLESHOOTING

ISSUE	SOLUTION
UNIT WILL NOT OPERATE	<ul style="list-style-type: none"> <li>• Make sure unit is properly plugged in and outlet is energized.</li> <li>• Make sure unit turned ON.</li> </ul>
DECREASED AIR FLOW	<ul style="list-style-type: none"> <li>• Make sure nothing is blocking air inlet and filtered air outlets.</li> <li>• Remove all plastic bags from filters.</li> <li>• Check condition of filters and clean if necessary.</li> <li>• Make sure that the air intake grill is at least 1 to 3 feet from away the wall.</li> </ul>
PERMAtech™ FILTER APPEARS DIRTY, EVEN AFTER VACUUMING CLEAN	<ul style="list-style-type: none"> <li>• This is normal and does not affect performance in any way. A new filter is not necessary.</li> </ul>
EXCESSIVE NOISE	<ul style="list-style-type: none"> <li>• Remove plastic bag(s) from filter(s).</li> <li>• Make sure parts are firmly positioned in place.</li> </ul>

### LEARNING MORE

For a wealth of information about your air cleaner and other Bionaire® products, visit our website at [www.bionaire.com](http://www.bionaire.com).

## 2 YEAR LIMITED WARRANTY

Sunbeam Products, Inc. doing business as Jarden Consumer Solutions or if in Canada, Sunbeam Corporation (Canada) Limited doing business as Jarden Consumer Solutions (collectively "JCS") warrants that for a period of two years from the date of purchase, this product will be free from defects in material and workmanship. JCS, at its option, will repair or replace this product or any component of the product found to be defective during the warranty period. Replacement will be made with a new or remanufactured product or component. If the product is no longer available, replacement may be made with a similar product of equal or greater value. This is your exclusive warranty. Do NOT attempt to repair or adjust any electrical or mechanical functions on this product. Doing so will void this warranty.

This warranty is valid for the original retail purchaser from the date of initial retail purchase and is not transferable. Keep the original sales receipt. Proof of purchase is required to obtain warranty performance. JCS dealers, service centers, or retail stores selling JCS products do not have the right to alter, modify or any way change the terms and conditions of this warranty.

This warranty does not cover normal wear of parts or damage resulting from any of the following: negligent use or misuse of the product, use on improper voltage or current, use contrary to the operating instructions, disassembly, repair or alteration by anyone other than JCS or an authorized JCS service center. Further, the warranty does not cover: Acts of God, such as fire, flood, hurricanes and tornadoes.

### What are the limits on JCS's Liability?

JCS shall not be liable for any incidental or consequential damages caused by the breach of any express, implied or statutory warranty or condition.

Except to the extent prohibited by applicable law, any implied warranty or condition of merchantability or fitness for a particular purpose is limited in duration to the duration of the above warranty.

JCS disclaims all other warranties, conditions or representations, express, implied, statutory or otherwise.

JCS shall not be liable for any damages of any kind resulting from the purchase, use or misuse of, or inability to use the product including incidental, special, consequential or similar damages or loss of profits, or for any breach of contract, fundamental or otherwise, or for any claim brought against purchaser by any other party.

Some provinces, states or jurisdictions do not allow the exclusion or limitation of incidental or consequential damages or limitations on how long an implied warranty lasts, so the above limitations or exclusion may not apply to you. This warranty gives you specific legal rights, and you may also have other rights that vary from province to province, state to state or jurisdiction to jurisdiction.

### How to Obtain Warranty Service

#### In the U.S.A.

If you have any question regarding this warranty or would like to obtain warranty service, please call 1-800-253-2764 and a convenient service center address will be provided to you.

#### In Canada

If you have any question regarding this warranty or would like to obtain warranty service, please call 1-800-253-2764 and a convenient service center address will be provided to you.

In the U.S.A., this warranty is offered by Sunbeam Products, Inc. doing business as Jarden Consumer Solutions located in Boca Raton, Florida 33431. In Canada, this warranty is offered by Sunbeam Corporation (Canada) Limited doing business as Jarden Consumer Solutions, located at 20B Hereford Street, Brampton, Ontario L6Y 0M1.

**PLEASE DO NOT RETURN THIS PRODUCT TO ANY OF THESE ADDRESSES OR TO THE PLACE OF PURCHASE.**

