



Model DFE-550TX  
Ethernet / Fast Ethernet  
Adapter for PCI Bus  
with WOL  
User's Guide

---

Rev. 06 September, 2004

6DFE550TX.06

Printed in Taiwan



RECYCLABLE

**Information in this document is subject to change without notice.**

**© 2004 D-Link Computer Corporation. All rights reserved.**

Reproduction in any manner whatsoever without the written permission of D-Link Computer Corporation is strictly forbidden.

Trademarks used in this text: *D-Link* and the *D-LINK* logo are trademarks of D-Link Computer Corporation; *Microsoft* and *Windows* are registered trademarks of Microsoft Corporation.

Other trademarks and trade names may be used in this document to refer to either the entities claiming the marks and names or their products. D-Link Computer Corporation disclaims any proprietary interest in trademarks and trade names other than its own.

### **FCC Warning**

This equipment has been tested and found to comply with the limits for a Class B digital device, pursuant to Part 15 of the FCC Rules. These limits are designed to provide reasonable protection against harmful interference in a residential installation. This equipment generates, uses and can radiate radio frequency energy and, if not installed and used in accordance with the instructions, may cause harmful interference to radio communications. However, there is no guarantee that interference will not occur in a particular installation. If this equipment does cause harmful interference to radio or television reception, which can be determined by turning the equipment off and on, the user is encouraged to try to correct the interference by one or more of the following measures:

- Reorient or relocate the receiving antenna.
- Increase the separation between the equipment and receiver.
- Connect the equipment into an outlet on a circuit different from that to which the receiver is connected.
- Consult the dealer or an experienced radio/TV technician for help.

Shielded interface cables must be used in order to comply with emission limits.

You are cautioned that changes or modifications not expressly approved by the party responsible for compliance could void your authority to operate the equipment.

This device complies with Part 15 of the FCC rules. Operation is subject to the following two conditions: (1) This device may not cause harmful interference, and (2) This device must accept any interference received, including interference that may cause undesired operation



## Limited Warranty (USA Only)

Subject to the terms and conditions set forth herein, D-Link Systems, Inc. ("D-Link") provides this Limited warranty for its product only to the person or entity that originally purchased the product from:

- D-Link or its authorized reseller or distributor and
- Products purchased and delivered within the fifty states of the United States, the District of Columbia, U.S. Possessions or Protectorates, U.S. Military Installations, addresses with an APO or FPO.

**Limited Warranty:** D-Link warrants that the hardware portion of the D-Link products described below will be free from material defects in workmanship and materials from the date of original retail purchase of the product, for the period set forth below applicable to the product type ("Warranty Period"), except as otherwise stated herein.

1-Year Limited Warranty for the Product(s) is defined as follows:

- Hardware (excluding power supplies and fans) One (1) Year
- Power Supplies and Fans One (1) Year
- Spare parts and spare kits Ninety (90) days

D-Link's sole obligation shall be to repair or replace the defective Hardware during the Warranty Period at no charge to the original owner or to refund at D-Link's sole discretion. Such repair or replacement will be rendered by D-Link at an Authorized D-Link Service Office. The replacement Hardware need not be new or have an identical make, model or part. D-Link may in its sole discretion replace the defective Hardware (or any part thereof) with any reconditioned product that D-Link reasonably determines is substantially equivalent (or superior) in all material respects to the defective Hardware. Repaired or replacement Hardware will be warranted for the remainder of the original Warranty Period from the date of original retail purchase. If a material defect is incapable of correction, or if D-Link determines in its sole discretion that it is not practical to repair or replace the defective Hardware, the price paid by the original purchaser for the defective Hardware will be refunded by D-Link upon return to D-Link of the defective Hardware. All Hardware (or part thereof) that is replaced by D-Link, or for which the purchase price is refunded, shall become the property of D-Link upon replacement or refund.

**Limited Software Warranty:** D-Link warrants that the software portion of the product ("Software") will substantially conform to D-Link's then current functional specifications for the Software, as set forth in the applicable documentation, from the date of original retail purchase of the Software for a period of ninety (90) days ("Warranty Period"), provided that the Software is properly installed on approved hardware and operated as contemplated in its documentation. D-Link further warrants that, during the Warranty Period, the magnetic media on which D-Link delivers the Software will be free of physical defects. D-Link's sole obligation shall be to replace the non-conforming Software (or defective media) with software that substantially conforms to D-Link's functional specifications for the Software or to refund at D-Link's sole discretion. Except as otherwise agreed by D-Link in writing, the replacement Software is provided only to the original licensee, and is subject to the terms and conditions of the license granted by D-Link for the Software. Software will be warranted for the remainder of the original Warranty Period from the date or original retail purchase. If a material non-conformance is incapable of correction, or if D-Link determines in its sole discretion that it is not practical to replace the non-conforming Software, the price paid by the original licensee for the non-conforming Software will be refunded by D-Link; provided that the non-conforming Software (and all copies thereof) is first returned to D-Link. The license granted respecting any Software for which a refund is given automatically terminates.

**Non-Applicability of Warranty:** The Limited Warranty provided hereunder for hardware and software of D-Link's products will not be applied to and does not cover any refurbished product and any product purchased through the inventory clearance or liquidation sale or other sales in which D-Link, the sellers, or the liquidators expressly disclaim their warranty obligation pertaining to the product and in that case, the product is being sold "As-Is" without any warranty whatsoever including, without limitation, the Limited Warranty as described herein, notwithstanding anything stated herein to the contrary.

**Submitting A Claim:** The customer shall return the product to the original purchase point based on its return policy. In case the return policy period has expired and the product is within warranty, the customer shall submit a claim to D-Link as outlined below:

- The customer must submit with the product as part of the claim a written description of the Hardware defect or Software nonconformance in sufficient detail to allow D-Link to confirm the same.
- The original product owner must obtain a Return Material Authorization ("RMA") number from the Authorized D-Link Service Office and, if requested, provide written proof of purchase of the product (such as a copy of the dated purchase invoice for the product) before the warranty service is provided.

- After an RMA number is issued, the defective product must be packaged securely in the original or other suitable shipping package to ensure that it will not be damaged in transit, and the RMA number must be prominently marked on the outside of the package. Do not include any manuals or accessories in the shipping package. D-Link will only replace the defective portion of the Product and will not ship back any accessories.

The customer is responsible for all in-bound shipping charges to D-Link. No Cash on Delivery ("COD") is allowed. Products sent COD will either be rejected by D-Link or become the property of D-Link. Products shall be fully insured by the customer and shipped to D-Link Systems, Inc., 17595 Mt. Herrmann, Fountain Valley, CA92708. D-Link will not be held responsible for any packages that are lost in

- transit to D-Link. The repaired or replaced packages will be shipped to the customer via UPS Ground or any common carrier selected by D-Link, with shipping charges prepaid. Expedited shipping is available if shipping charges are prepaid by the customer and upon request.

D-Link may reject or return any product that is not packaged and shipped in strict compliance with the foregoing requirements, or for which an RMA number is not visible from the outside of the package. The product owner agrees to pay D-Link's reasonable handling and return shipping charges for any product that is not packaged and shipped in accordance with the foregoing requirements, or that is determined by D-Link not to be defective or non-conforming.

**What Is Not Covered:** This limited warranty provided by D-Link does not cover: Products, if in D-Link's judgment, have been subjected to abuse, accident, alteration, modification, tampering, negligence, misuse, faulty installation, lack of reasonable care, repair or service in any way that is not contemplated in the documentation for the product, or if the model or serial number has been altered, tampered with, defaced or removed; Initial installation, installation and removal of the product for repair, and shipping costs; Operational adjustments covered in the operating manual for the product, and normal maintenance; Damage that occurs in shipment, due to act of God, failures due to power surge, and cosmetic damage; Any hardware, software, firmware or other products or services provided by anyone other than D-Link; Products that have been purchased from inventory clearance or liquidation sales or other sales in which D-Link, the sellers, or the liquidators expressly disclaim their warranty obligation pertaining to the product. Repair by anyone other than D-Link or an Authorized D-Link Service Office will void this Warranty.

**Disclaimer of Other Warranties:** EXCEPT FOR THE LIMITED WARRANTY SPECIFIED HEREIN, THE PRODUCT IS PROVIDED "AS-IS" WITHOUT ANY WARRANTY OF ANY KIND WHATSOEVER INCLUDING, WITHOUT LIMITATION, ANY WARRANTY OF MERCHANTABILITY, FITNESS FOR A

PARTICULAR PURPOSE AND NON-INFRINGEMENT. IF ANY IMPLIED WARRANTY CANNOT BE DISCLAIMED IN ANY TERRITORY WHERE A PRODUCT IS SOLD, THE DURATION OF SUCH IMPLIED WARRANTY SHALL BE LIMITED TO NINETY (90) DAYS. EXCEPT AS EXPRESSLY COVERED UNDER THE LIMITED WARRANTY PROVIDED HEREIN, THE ENTIRE RISK AS TO THE QUALITY, SELECTION AND PERFORMANCE OF THE PRODUCT IS WITH THE PURCHASER OF THE PRODUCT.

**Limitation of Liability:** TO THE MAXIMUM EXTENT PERMITTED BY LAW, D-LINK IS NOT LIABLE UNDER ANY CONTRACT, NEGLIGENCE, STRICT LIABILITY OR OTHER LEGAL OR EQUITABLE THEORY FOR ANY LOSS OF USE OF THE PRODUCT, INCONVENIENCE OR DAMAGES OF ANY CHARACTER, WHETHER DIRECT, SPECIAL, INCIDENTAL OR CONSEQUENTIAL (INCLUDING, BUT NOT LIMITED TO, DAMAGES FOR LOSS OF GOODWILL, LOSS OF REVENUE OR PROFIT, WORK STOPPAGE, COMPUTER FAILURE OR MALFUNCTION, FAILURE OF OTHER EQUIPMENT OR COMPUTER PROGRAMS TO WHICH D-LINK'S PRODUCT IS CONNECTED WITH, LOSS OF INFORMATION OR DATA CONTAINED IN, STORED ON, OR INTEGRATED WITH ANY PRODUCT RETURNED TO D-LINK FOR WARRANTY SERVICE) RESULTING FROM THE USE OF THE PRODUCT, RELATING TO WARRANTY SERVICE, OR ARISING OUT OF ANY BREACH OF THIS LIMITED WARRANTY, EVEN IF D-LINK HAS BEEN ADVISED OF THE POSSIBILITY OF SUCH DAMAGES. THE SOLE REMEDY FOR A BREACH OF THE FOREGOING LIMITED WARRANTY IS REPAIR, REPLACEMENT OR REFUND OF THE DEFECTIVE OR NON-CONFORMING PRODUCT. THE MAXIMUM LIABILITY OF D-LINK UNDER THIS WARRANTY IS LIMITED TO THE PURCHASE PRICE OF THE PRODUCT COVERED BY THE WARRANTY. THE FOREGOING EXPRESS WRITTEN WARRANTIES AND REMEDIES ARE EXCLUSIVE AND ARE IN LIEU OF ANY OTHER WARRANTIES OR REMEDIES, EXPRESS, IMPLIED OR STATUTORY

**Governing Law.** This Limited Warranty shall be governed by the laws of the State of California. Some states do not allow exclusion or limitation of incidental or consequential damages, or limitations on how long an implied warranty lasts, so the foregoing limitations and exclusions may not apply. This limited warranty provides specific legal rights and the product owner may also have other rights which vary from state to state.

**For detailed warranty outside the United States, please contact corresponding local D-Link office.**

**Information in this document is subject to change without notice.**

## **Warranty for all Countries and Regions except USA**

### **Wichtige Sicherheitshinweise**

Bitte lesen Sie sich diese Hinweise sorgfältig durch.

Heben Sie diese Anleitung für den spätern Gebrauch auf.

Vor jedem Reinigen ist das Gerät vom Stromnetz zu trennen. Verwenden Sie keine Flüssig- oder Aerosolreiniger. Am besten dient ein angefeuchtetes Tuch zur Reinigung.

Um eine Beschädigung des Gerätes zu vermeiden sollten Sie nur Zubehörteile verwenden, die vom Hersteller zugelassen sind.

Das Gerät ist vor Feuchtigkeit zu schützen.

Bei der Aufstellung des Gerätes ist auf sichern Stand zu achten. Ein Kippen oder Fallen könnte Verletzungen hervorrufen. Verwenden Sie nur sichere Standorte und beachten Sie die Aufstellhinweise des Herstellers.

Die Belüftungsöffnungen dienen zur Luftzirkulation die das Gerät vor Überhitzung schützt. Sorgen Sie dafür, daß diese Öffnungen nicht abgedeckt werden.

Beachten Sie beim Anschluß an das Stromnetz die Anschlußwerte.

Die Netzanschlußsteckdose muß aus Gründen der elektrischen Sicherheit einen Schutzleiterkontakt haben.

Verlegen Sie die Netzanschlußleitung so, daß niemand darüber fallen kann. Es sollte auch nichts auf der Leitung abgestellt werden.

Alle Hinweise und Warnungen die sich am Geräten befinden sind zu beachten. Wird das Gerät über einen längeren Zeitraum nicht benutzt, sollten Sie es vom Stromnetz trennen. Somit wird im Falle einer Überspannung eine Beschädigung vermieden.

Durch die Lüftungsöffnungen dürfen niemals Gegenstände oder Flüssigkeiten in das Gerät gelangen. Dies könnte einen Brand bzw. Elektrischen Schlag auslösen. Öffnen Sie niemals das Gerät. Das Gerät darf aus Gründen der elektrischen Sicherheit nur von autorisiertem Servicepersonal geöffnet werden.

Wenn folgende Situationen auftreten ist das Gerät vom Stromnetz zu trennen und von einer qualifizierten Servicestelle zu überprüfen:

Netzkabel oder Netzstecker sind beschädigt.

Flüssigkeit ist in das Gerät eingedrungen.

Das Gerät war Feuchtigkeit ausgesetzt.

Wenn das Gerät nicht der Bedienungsanleitung entsprechend funktioniert oder Sie mit Hilfe dieser Anleitung keine Verbesserung erzielen.

Das Gerät ist gefallen und/oder das Gehäuse ist beschädigt.

Wenn das Gerät deutliche Anzeichen eines Defektes aufweist.

Bei Reparaturen dürfen nur Originalersatzteile bzw. den Originalteilen entsprechende Teile verwendet werden. Der Einsatz von ungeeigneten Ersatzteilen kann eine weitere Beschädigung hervorrufen.

Wenden Sie sich mit allen Fragen die Service und Reparatur betreffen an Ihren Servicepartner. Somit stellen Sie die Betriebssicherheit des Gerätes sicher.

Zum Netzanschluß dieses Gerätes ist eine geprüfte Leitung zu verwenden, Für einen Nennstrom bis 6A und einem Gerätegewicht größer 3kg ist eine Leitung nicht leichter als H05VV-F, 3G, 0.75mm<sup>2</sup> einzusetzen.

## **WARRANTIES EXCLUSIVE**

IF THE D-LINK PRODUCT DOES NOT OPERATE AS WARRANTED ABOVE, THE CUSTOMER'S SOLE REMEDY SHALL BE, AT D-LINK'S OPTION, REPAIR OR REPLACEMENT. THE FOREGOING WARRANTIES AND REMEDIES ARE EXCLUSIVE AND ARE IN LIEU OF ALL OTHER WARRANTIES, EXPRESSED OR IMPLIED, EITHER IN FACT OR BY OPERATION OF LAW, STATUTORY OR OTHERWISE, INCLUDING WARRANTIES OF MERCHANTABILITY AND FITNESS FOR A PARTICULAR PURPOSE. D-LINK NEITHER ASSUMES NOR AUTHORIZES ANY OTHER PERSON TO ASSUME FOR IT ANY OTHER LIABILITY IN CONNECTION WITH THE SALE, INSTALLATION MAINTENANCE OR USE OF D-LINK'S PRODUCTS.

D-LINK SHALL NOT BE LIABLE UNDER THIS WARRANTY IF ITS TESTING AND EXAMINATION DISCLOSE THAT THE ALLEGED DEFECT IN THE PRODUCT DOES NOT EXIST OR WAS CAUSED BY THE CUSTOMER'S OR ANY THIRD PERSON'S MISUSE, NEGLIGENCE, IMPROPER INSTALLATION OR TESTING, UNAUTHORIZED ATTEMPTS TO REPAIR, OR ANY OTHER CAUSE BEYOND THE RANGE OF THE INTENDED USE, OR BY ACCIDENT, FIRE, LIGHTNING OR OTHER HAZARD.



## **LIMITATION OF LIABILITY**

IN NO EVENT WILL D-LINK BE LIABLE FOR ANY DAMAGES, INCLUDING LOSS OF DATA, LOSS OF PROFITS, COST OF COVER OR OTHER INCIDENTAL, CONSEQUENTIAL OR INDIRECT DAMAGES ARISING OUT THE INSTALLATION, MAINTENANCE, USE, PERFORMANCE, FAILURE OR INTERRUPTION OF A D-LINK PRODUCT, HOWEVER CAUSED AND ON ANY THEORY OF LIABILITY. THIS LIMITATION WILL APPLY EVEN IF D-LINK HAS BEEN ADVISED OF THE POSSIBILITY OF SUCH DAMAGE.

IF YOU PURCHASED A D-LINK PRODUCT IN THE UNITED STATES, SOME STATES DO NOT ALLOW THE LIMITATION OR EXCLUSION OF LIABILITY FOR INCIDENTAL OR CONSEQUENTIAL DAMAGES, SO THE ABOVE LIMITATION MAY NOT APPLY TO YOU.

## **Limited Warranty**

### **Hardware:**

D-Link warrants each of its hardware products to be free from defects in workmanship and materials under normal use and service for a period commencing on the date of purchase from D-Link or its Authorized Reseller and extending for the length of time stipulated by the Authorized Reseller or D-Link Branch Office nearest to the place of purchase.

If the product proves defective within the applicable warranty period, D-Link will provide repair or replacement of the product. D-Link shall have the sole discretion whether to repair or replace, and replacement product may be new or reconditioned. Replacement product shall be of equivalent or better specifications, relative to the defective product, but need not be identical. Any product or part repaired by D-Link pursuant to this warranty shall have a warranty period of not less than 90 days, from date of such repair, irrespective of any earlier expiration of original warranty period. When D-Link provides replacement, then the defective product becomes the property of D-Link.

After an RMA number is issued, the defective product must be packaged securely in the original or other suitable shipping package to ensure that it will not be damaged in transit, and the RMA number must be prominently marked on the outside of the package. The package must be mailed or otherwise shipped to D-Link with all costs of mailing/shipping/insurance prepaid. D-Link shall never be responsible for any software, firmware, information, or memory data of Purchaser contained in, stored on, or integrated with any product returned to D-Link pursuant to this warranty.

Any package returned to D-Link without an RMA number will be rejected and shipped back to Purchaser at Purchaser's expense, and D-Link reserves the right in such a case to levy a reasonable handling charge in addition mailing or shipping costs.

**Software:**

D-Link warrants that its software products will perform in substantial conformance with the applicable product documentation provided by D-Link with such software product, for a period of ninety (90) days from the date of purchase from D-Link or its Authorized Reseller. D-Link warrants the magnetic media, on which D-Link provides its software product, against failure during the same warranty period. This warranty applies to purchased software, and to replacement software provided by D-Link pursuant to this warranty, but shall not apply to any update or replacement which may be provided for download via the Internet, or to any update which may otherwise be provided free of charge.

D-Link's sole obligation under this software warranty shall be to replace any defective software product with product which substantially conforms to D-Link's applicable product documentation. Purchaser assumes responsibility for the selection of appropriate application and system/platform software and associated reference materials. D-Link makes no warranty that its software products will work in combination with any hardware, or any application or system/platform software product provided by any third party, excepting only such products as are expressly represented, in D-Link's applicable product documentation as being compatible. D-Link's obligation under this warranty shall be a reasonable effort to provide compatibility, but D-Link shall have no obligation to provide compatibility when there is fault in the third-party hardware or software. D-Link makes no warranty that operation of its software products will be uninterrupted or absolutely error-free, and no warranty that all defects in the software product, within or without the scope of D-Link's applicable product documentation, will be corrected.

## Table of Contents

---

<b>INTRODUCTION .....</b>	<b>1</b>
ACPI POWER MANAGEMENT .....	1
WAKE ON LAN .....	1
FLOW CONTROL .....	2
IP MULTICASTING .....	2
DMI/DESKTOP MANAGEMENT INTERFACE.....	3
IEEE802.1P PRIORITY TAGGING .....	4
IEEE802.1Q VLANs .....	4
PRODUCT FEATURES.....	5
<b>INSTALLATION.....</b>	<b>6</b>
UNPACKING .....	6
INSTALLING THE ADAPTER .....	6
CONNECTING THE WOL CABLE .....	7
CONNECTING THE NETWORK CABLE .....	8
<i>Connecting for 100Mbps Fast Ethernet.....</i>	<i>9</i>
<i>Connecting for 10Mbps Ethernet.....</i>	<i>9</i>
SOFTWARE INSTALLATION .....	10
VERIFICATION/DIAGNOSTIC PROGRAM .....	10
<i>Adapter Function Test .....</i>	<i>11</i>
<i>Network Operation Test.....</i>	<i>12</i>
<b>TROUBLESHOOTING .....</b>	<b>13</b>
<b>SPECIFICATIONS .....</b>	<b>14</b>

---

# ***Introduction***

Thank you for choosing the D-Link DFE-550TX - the value leader among Fast Ethernet adapters for the PCI-Bus. This introduction gives a general description of the newer networking technologies found on the DFE-550TX.

---

## **ACPI Power Management**

The DFE-550TX adapter complies with the Advanced Configuration and Power Interface 1.0 (ACPI) specifications. ACPI is a new open industry specification providing power management support systems through hardware and operating system cooperation. The DFE-550TX can reduce power consumption by entering Sleep mode along with the host computer. Although in Sleep mode, the network interface card (NIC) will continue to monitor the LAN looking for wake-up packets.

---

## **Wake On LAN**

Wake On LAN (WOL) is an ACPI function allowing a powered down (sleeping) computer to be powered ON from a remote station. To use the WOL feature, the NIC must be WOL capable and the motherboard of the PC must be ACPI compliant.

While powered-down computers Sleep, WOL enabled NICs monitor LAN traffic for valid Wake-up frames. When one is received, the NIC will immediately wake-up and send a signal to the motherboard to power ON the computer.

Some uses for the WOL feature include:

- Forgot a document and out of town? Send a Wake-up signal to your computer and retrieve the needed file.
- Initiate long routines and reports before you get to work.
- Transfer files when the network traffic is low (during late hours).
- Power ON your PC before you arrive to work.
- The MIS department can upgrade software on computers after hours from a remote station.

WOL is very helpful in limiting the power consumption of PCs, workstations, and kiosks.

---

## **Flow Control**

---

The DFE-550TX implements IEEE 802.3x compliant flow control for full duplex, which provides traffic management functions for full-duplex operation. Flow control allows for enhanced full duplex operation with switches. When operating at full duplex (requiring a direct connection to a switch) and the switch's data buffer is about to overflow, a Pause frame will be transmitted to the DFE-550TX. The ensuing idle time keeps the buffer from overflowing and prevents data from being lost. This enhancement can improve network throughput, avoid collisions and prevent lost data, helping the network achieve optimal performance.

---

## **IP Multicasting**

---

The DFE-550TX uses chip-level address filtering when implementing IP Multicasting (defined in RFC 1112). This hardware-based implementation provides a huge performance increase over other interface cards. Formerly, broadcast packets were used for multicasting, but they are a less than ideal solution for transmitting packets to groups. This is

because broadcast packets reach every terminal on the network, creating undue traffic and occupying CPU time on all computers.

IP Multicasting is a much better way to send data to groups, especially since routers and even switches can filter packets so they only reach those stations that are part of the group. The DFE-550TX goes one step further by examining multicast packets on the card itself (rather than using the computer's CPU) and only accepting those packets for the group(s) in which the host belongs, thus conserving CPU utilization.

This can be very useful since more and more multicast data, such as corporate messages to employees, stock quotes, video and audio conferencing, and database replication is transmitted on today's networks.

IP Multicasting can eliminate an organization's need to maintain parallel networks for voice, video and data.

---

## **DMI/Desktop Management Interface**

---

DMI is an Operating System/Network Operating System-independent management framework that allows system vendors to support multiple market/customer segments with a single management strategy. DMI lowers the Total Cost of Ownership (TCO) by providing a common framework for managing desktop systems, mobile systems and servers.

DMI supports a management schema (Management Information Format [MIF]), allowing manageable components to be described within various platforms in a standard descriptive language. MIFs are extensible, allowing the DFE-550TX to export value-added management capabilities. These value-added management features enable remote troubleshooting and higher quality management of computer resources.

---

## **IEEE802.1p Priority Tagging**

---

With the growing number of network applications, local area networks (LANs) must deliver data for a wide variety applications. Email, file transfers, database queries, voice over IP (VoIP), video-conferencing and multimedia must all be delivered to the end-user's. Some of the traffic, such as video-conferencing, is of a higher priority, with a slight delay of packets resulting in noticeable degeneration of video and audio quality, while other traffic, such as email will not be noticeably affected by tiny delays. The large number of programs run over today's networks serves to impede the ability to deliver time-critical data. Even if bandwidth is not usually a problem on your network, during peak hours bursts in network traffic can result in the delay of time-critical traffic.

IEEE802.1p defines seven levels of prioritization for Ethernet packets. High priority packets will be sent through a network using 802.1p-compliant switches first. Lower priority packets will be transferred whenever bandwidth is available. When properly setup, this ensures that time-critical data arrives on time and is not affected by other traffic.

---

## **IEEE802.1Q VLANs**

---

The IEEE802.1Q VLAN can help improve network performance and security by segmenting the network into VLANs. IEEE802.1Q VLANs can limit broadcast and node-to-node (unicast) traffic to a single VLAN. This limits the effects of broadcast storms and provides additional security for your network.

To set up GVRP VLANs, which support dynamic registration, the adapter should be connected to a switch with GVRP VLAN capability.

For VLANs to function, the computer in which this NIC is installed must be using Windows 95 or later as its operating

system.

---

## Product Features

---

Designed for high performance and versatility, the DFE-550TX Adapter provides the following features:

- Plug and Play installation.
- Complies with the IEEE 802.3 10Base-T and 802.3u 100Base-TX Ethernet standards.
- RJ-45 connector for standard network cable connection.
- 100Mbps Fast Ethernet or 10Mbps Ethernet data transfer rates, automatically configured by NWay auto-negotiation.
- Full duplex or half-duplex operation, also NWay configured.
- PCI Bus Master direct memory access for high throughput and low CPU utilization.
- ACPI 1.0 power management compliant.
- Wake-On-LAN power-saving feature allows sleeping PCs to be woken up and used via remote stations.
- IEEE 802.3x Flow Control enabled with full duplex operation, allowing enhanced operation when directly connected to a switch.
- IEEE 802.1Q/VLAN Tagging supported
- VLAN registration using IEEE802.1Q GVRP standard
- IEEE 802.1p Tagging supported
- IP Multicast packet filtering reduces CPU utilization and conserves network bandwidth.
- Sixteen packet counters provide a full range of network management statistics.
- DL10050C D-Link's own 32-bit intelligent Ethernet controller.
- Large 2Kb Tx, 2Kb Rx FIFO buffers synchronize transmissions and buffer data to help prevent packet loss.
- Three LED indicators: Link/Act, Speed (10/100), Full/Half Duplex.
- Drivers for all leading Network Operating Systems.



---

# Installation

Installation of the DFE-550TX 10/100 NWay Ethernet Adapter requires installing the hardware first. Once the interface card has been installed into the host computer, the software can be installed.

---

## Unpacking

**CAUTION:** *Under ordinary circumstances, a DFE-550TX interface card will not be affected by static electricity. However, it is good practice to eliminate static charges by touching a sizable metal object before handling the adapter card.*

Open the shipping carton and carefully remove all items. In addition to this User's Guide, ascertain that you have:

- One DFE-550TX Ethernet Adapter Card.
- DFE-550TX Software CD-ROM.
- WOL Cable.
- Multi Language Installation Guide

---

## Installing the Adapter

1. Shut down the computer, unplug its power cord, and remove the cover.
2. If your order does not include the Boot ROM option, go ahead to Step 3. If your order includes the Boot ROM option, then install the Boot ROM Chip by plugging the chip into the Boot ROM Socket on the DFE-550TX card. The notched end of the Boot ROM Chip must be aligned with the notched end of the Boot ROM Socket. Opposite alignment

will destroy the Boot ROM Chip!

3. Firmly insert the contact edge of the DFE-550TX card into any available PCI Bus expansion slot.
4. Install the bracket screw to secure the card to the computer chassis.
5. At this point, refer to section *Connecting the WOL Cable* to install the WOL Cable between the NIC and the PC motherboard.
6. Replace the computer cover.
7. Reconnect the computer power cord, and switch the computer power on. If the BIOS section of your computer boot program is Plug and Play compliant, then at power-up the BIOS will automatically configure itself for the newly installed DFE-550TX adapter.

**NOTE:** *Due to a fault in some Plug-n-Play BIOS programs, it happens occasionally that a newly installed adapter is assigned an IRQ Number which is already assigned to another device. In such a case, the conflicting IRQ Numbers (IRQ numbers must be unique) will cause faults in the behavior of both devices. If this happens, it is necessary to run the CMOS Setup utility, and manually assign a non-conflicting Interrupt Number to the DFE-550TX.*

---

## Connecting the WOL Cable

---

The WOL Cable<sup>†</sup> is an interconnect cable with standard 3-pin connectors on each end. Please follow the procedures listed below to ensure proper installation of

---

<sup>†</sup> The WOL Cable is an optional component of your DFE-550TX kit. If a cable is not included in your kit, purchase the cable through your local computer retailer.

the WOL cable.

1. Connect either end connector of the WOL Cable to the NIC WOL Connector. Both ends of the WOL Cable are identical, so either end may be used.
2. Examine the PC motherboard and/or refer to the manual for the motherboard to locate the corresponding WOL Connector on the motherboard. The actual location is system dependent, but the motherboard may have a label beside the WOL Connector. After you have located the WOL connector on the motherboard, connect the cable.
3. Power-ON the PC and press <Delete> or <F1> when prompted to enter the PCI/ISA BIOS CMOS Setup. Enable the WOL function or the power-ON function of the PC. The name of this function is system dependent, but may be located in a category heading titled something like *Power Management*. Refer to your computer's manual for more information regarding the CMOS Setup Utility and BIOS settings.

**NOTE:** *If your system's motherboard WOL Connector does not fit the WOL Cable or does not have 3 pins, do not attempt to force a connection or alter the components to fit. Doing so could permanently damage your computer.*

---

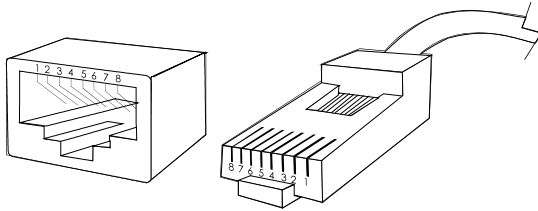
## **Connecting the Network Cable**

---

Category 5 UTP cable qualifies for both 100BASE-TX Fast Ethernet and 10BASE-T Ethernet cabling rules. The maximum length of any single cable segment is 100 meters. Please keep in mind, however, that the maximum cable run between any two stations in a collision domain is 205m.

## Connecting for 100Mbps Fast Ethernet

Category 5 UTP cable is required for Fast Ethernet operation. The maximum cable run between the DFE-550TX and the supporting hub or switch is 100m. The cable must be *straight-through* (not a *crossover* cable), with an RJ-45 plug at each end. Make the network connection by plugging one end of the cable into the RJ-45 jack of the DFE-550TX, and the other end into a normal (non-Uplink) port on the supporting device.



## Connecting for 10Mbps Ethernet

Category 3, Category 4, and Category 5 UTP cable, as well as EIA/TIA-568 100-ohm STP cable all meet Ethernet cabling requirements. The maximum cable run between the DFE-550TX and the supporting hub or switch is 100 meters. The cable must be *straight-through* (not a *crossover* cable) with an RJ-45 connector at each end. Make the network connection by plugging one end of the cable into the RJ-45 jack of the DFE-550TX, and the other end into a normal (non-Uplink) port on the supporting device.

**Note:** The DFE-550TX will use NWay to automatically detect whether it is connected at 10Mbps or 100Mbps and configure itself accordingly. The duplex mode will likewise be auto-negotiated by NWay at the same time, allowing the host computer to be up and running on the network as soon as possible with a minimum of trouble.

---

## **Software Installation**

---

On account of the great variety of network environments in which the DFE-550TX may be used, the instructions for software installation are given as README files on the DFE-550TX Software CD-ROM. Review the root directory and locate the subdirectory containing the appropriate software for use with your network operating system. Access the README file for overview information. For full installation details, see the README file and the referenced instruction files in the subdirectory.

---

## **Verification/Diagnostic Program**

---

This test program verifies configuration of the DFE-550TX as set by the installation procedure, and assists with isolation of any faults in operation. Verification and testing procedures are optional, and will only be useful in the unusual event that there is a fault, such as an interrupt number conflict among your computer expansion cards. If your installation provides normal operation, you might choose to skip these procedures.

The Verification/Diagnostic Program provides two levels of testing: adapter function testing and network operation testing. Adapter testing includes a variety of diagnostic procedures.

Adapter testing does not require substitution of a loopback cable. All procedures of the Adapter test may be carried out with the network cable connection in place.

For the network operation test, the cable connecting your station with its supporting hub must be in place. Network testing involves the broadcast transmission of test packets from the primary station. The test cannot be fully implemented unless a second station on the LAN is available to the network operation test, in order to return the test packets to the primary station.

To run the Verification/Diagnostic Program, proceed with these

steps:

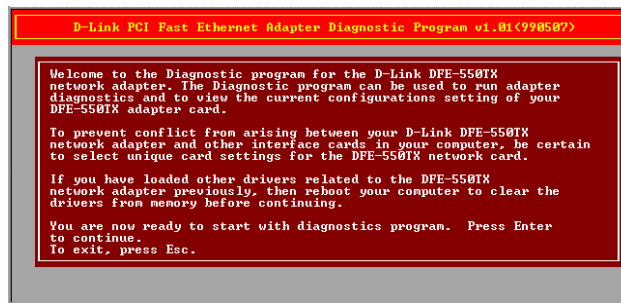
## Adapter Function Test

1. Insert the DFE-550TX Software CD-ROM in an available drive (here shown as CD-ROM drive ). At the DOS prompt (here shown as >), key in:

**DIAG.EXE**

and <RETURN>. The opening screen of the Verification/Diagnostic program will appear.

**NOTE:** *Read the README.TXT, on the CD-ROM, to choose the appropriate diagnostic program for your operating system.*



2. Review the reported configuration data before proceeding to Step 3.
3. The Configuration Data screen also features a Diagnostic Menu. Follow the cues at the foot of the screen to select and run the Adapter Basic Diagnostic program. The adapter function test results will appear onscreen. In the Loopback test, test signals are intercepted and reflected at the MAC level without reaching the network cable. If the results are normal, then go ahead to the Network Operation test, starting with Step 4.

## **Network Operation Test**

4. If you have access to a second station on the LAN, then skip ahead to Step 5. If you do not have access to a second station on the LAN, then the network test will be limited to blind transmission of test packets (none of which will be returned to the primary station). Follow the cues at the foot of the screen to select and run the Network Diagnostic program. Observe the *Packets Sent* line to see a steadily and rapidly increasing packet count. This will indicate normal transmission onto the LAN, and will be the end of your Verification/Diagnostic run. Skip the remaining steps shown below.
5. Remove the DFE-550TX Software CD-ROM from your station's (the primary station's) CD-ROM drive, and insert it into an available drive of a second station on your LAN. At the DOS prompt (here shown as >), key in:

### **DIAG.EXE**

and <RETURN>. The opening screen of the Diagnostic program will appear onscreen at the second station. Follow the cues at the foot of the screen to select and run the Network Test program at the second station. The second station then begins broadcasting test packets, and at the same time is also ready to receive and return test signals transmitted from the primary station newly installed DFE-550TX.

6. Return to the primary station and follow the cues at the foot of the screen to select and run the Network Diagnostic program. Observe the *Packets Sent* and *Packets Received* lines to see that they track together (always showing equal count numbers), which verifies normal network operation.

The most likely causes of failure for any of the diagnostic tests are incorrect options settings, option settings that conflict with the settings of other boards or improper installation. In the event of any failure in diagnostic tests, refer to the *Troubleshooting* section of this guide.

---

# Troubleshooting

If you experience any problems with the adapter, first verify that the appropriate driver is loaded, that the proper grade of cable is employed for the network connection, and that the supporting hub is functioning properly.

1. Ascertain that the adapter card is fully and firmly seated in the slot connector.
2. Check the length and rating of connecting cables.
3. Ascertain that the adapter PCI slot is not deactivated at the BIOS level. The CMOS Setup utility in PCI computers ordinarily provides the option to activate or deactivate PCI slots.
4. Replace the adapter in question with a verified adapter and run NIC (software) diagnostic tests.
5. Install the questioned adapter in another PCI computer and run the tests again.
6. Remove all other PCI adapters from the computer and run the tests again. If the verification/diagnostic run is then normal, then there is probably an interrupt number conflict which will have to be resolved manually by a CMOS Setup utility run after you have reinstalled all of the expansion cards.

The DFE-550TX Adapter features three LED indicators to assist in network diagnostics:

- LINK/ACT Indicator  
A steady *green* LED indicates that the card is receiving power and there is a good link between the DFE-550TX and the device it is connected to. The LED will flash when the adapter is sending or receiving data.
- 100M Indicator  
This LED shows steady green (ON) when operating at 100Mbps. It is dark (OFF) when connected at 10Mbps.
- FULL (duplex) Indicator  
This LED is ON for full duplex connections and OFF when connected at half duplex.



---

# Specifications

Network Type:

- Fast Ethernet 100Base-TX  
IEEE 802.3u standard for 100Mbps baseband CSMA/CD local area network
- Ethernet 10BASE-T  
IEEE 802.3 standard for 10Mbps baseband CSMA/CD local area network

Jumperless Hardware

NWay Auto-negotiation enabled

Media interface: RJ-45

- Interface controller: D-Link DL10050C

EMI Compatibility:

- FCC Class B
- VCCI Class B
- CE Class B
- C-Tick
- BSMI Class B

Host interface: PCI 2.1/2.2 Bus (Bus Master)

Physical Dimensions: 12.0 cm x 5 cm

Environment:

- Storage: -25° ~ 55°C (-13° ~ 131°F)
- Operating: 0° ~ 50°C (32° ~ 122°F)
- Humidity: 10% to 90% non-condensing

Power Consumption: 1 Watts max

PCB Layer: 2 layers

Software drivers for:

- Microsoft Windows 95OSR2, 95, 98, 98 SE
- Microsoft Windows 2000, ME, XP, Server 2003
- Microsoft NT 3.51, 4.0
- Microsoft Windows for Workgroups 3.11
- Novell NetWare Server 4.x, 5.x, 6.x
- Novell NetWare Client 32 for DOS
- Novell NetWare Client for DOS
- NDS2 for DOS driver
- FTP PC/TCP
- Packet Driver
- SCO Open Server 5.0.x
- RPL boot ROM
- PXE Boot ROM
- DMI Driver
- Diagnostic
- Linux RedHat 7.1, 7.3
- IBM LAN support program V1.3x

# **D-Link**® Offices

---

<b>Australia</b>	<b>D-Link Australasia</b> 1 Giffnock Avenue, North Ryde, NSW 2113, Sydney, Australia TEL: 61-2-8899-1800 FAX: 61-2-8899-1868 URL: <a href="http://www.dlink.com.au">www.dlink.com.au</a>
<b>Belgium</b>	<b>D-Link Belgium</b> Rue des Colonies 11, B-1000 Brussels, Belgium TEL: 32 (0)2 517 7111 FAX: 32 (0)2 517 6500 URL: <a href="http://www.dlink-benelux.com">www.dlink-benelux.com</a>
<b>Brazil</b>	<b>D-Link Brasil Ltda.</b> Av das Nações Unidas, 11857, cj 132 – Brooklin Novo São Paulo, Brasil 04578-000 TEL: (55 11) 5503-9320 FAX: (55 11) 5503-9321 URL: <a href="http://www.dlink.com.br">www.dlink.com.br</a>
<b>Canada</b>	<b>D-Link Canada</b> 2180 Winston Park Drive, Oakville, Ontario, L6H 5W1 Canada TEL: 1-905-829-5033 FAX: 1-905-829-5223 URL: <a href="http://www.dlink.ca">www.dlink.ca</a>
<b>Chile</b>	<b>D-Link South America (Sudamérica)</b> Isidora Goyenechea 2934 Oficina 702 Las Condes Fono 2323185, Santiago, Chile TEL: 56-2-232-3185 FAX: 56-2-232-0923 URL: <a href="http://www.dlink.cl">www.dlink.cl</a>
<b>China</b>	<b>D-Link China</b> Room 507/508, Tower W1, The Towers, Oriental Plaza No. 1 East Chang An Ave., Dong Cheng District Beijing, 100738, China TEL: (86-010) 85182533 FAX: (86-010) 85182250 URL: <a href="http://www.dlink.com.cn">www.dlink.com.cn</a>
<b>Denmark</b>	<b>D-Link Denmark</b> Naverland 2, DK-2600 Glostrup, Denmark TEL: 45-43-96-90-40 FAX: 45-43-42-43-47 URL: <a href="http://www.dlink.dk">www.dlink.dk</a>

**Egypt**                    **D-Link Egypt**  
19 El-Shahed Helmy, El Masry, Al-Maza, Heliopolis,  
Cairo, Egypt  
TEL: 202-41-44-295 FAX: 202-41-56-704  
URL: www.dlink-me.com

**Finland**                    **D-Link Finland**  
Pakkalankuja 7A, 3<sup>rd</sup> floor,                    01510 Vantaa,  
Finland  
TEL: 358-9-2707-5080 FAX: 358-9-2707-5081  
URL: www.dlink.fi

**France**                    **D-Link France**  
Le Florilege, No. 2, Allée de la Fresnerie,  
78330 Fontenay le Fleury, France  
TEL: 33-1-3023-8688 FAX: 33-1-3023-8689  
URL: www.dlink-france.fr

**Germany**                    **D-Link Central Europe (D-Link Deutschland  
GmbH)**  
Schwalbacher Strasse 74, D-65760 Eschborn,  
Germany  
TEL: 49-6196-77990 FAX: 49-6196-7799300  
URL: www.dlink.de

**India**                    **D-Link India**  
D-Link House, Kurla-Bandra Complex Rd., Off Cst  
Rd.,  
Santacruz (East), Mumbai, 400 098 India  
TEL: 91-022-652-6696/6578/6623  
FAX: 91-022-652-8914/8476  
URL: www.dlink.co.in & www.dlink-india.com

**Israel**                    **D-Link Israel**  
11 Hamanofim Street, Ackerstein Towers, Regus  
Business Center  
P.O.B. 2148, Hertzelia-Pituach 46120, Israel  
TEL: 972-9-9715700 FAX: 972-9-9715601  
URL: www.dlink.co.il

**Italy**                    **D-Link Mediterraneo Srl/D-Link Italia**  
Via Nino Bonnet n. 6/B, 20154, Milano, Italy  
TEL: 39-02-2900-0676 FAX: 39-02-2900-1723

URL: [www.dlink.it](http://www.dlink.it)

**Netherlands**

**D-Link Netherlands**

Weena 290, 3012 NJ Rotterdam, The Netherlands  
TEL: 31 (0)10 282 1445 FAX: 31 (0)10 282 1331  
URL: [www.dlink-benelux.com](http://www.dlink-benelux.com)

**Norway**

**D-Link Norway**

Karihaugveien 89, N-1086 Oslo  
TEL: 47-23-89-71-89 FAX: 47-22-30-90-85  
URL: [www.dlink.no](http://www.dlink.no)

**Russia**

**D-Link Russia**

Grafsky per., 14, floor 6, Moscow 129626 Russia  
TEL: 7 (095) 744-0099 FAX: 7 (095) 744-0099 #350  
URL: [www.dlink.ru](http://www.dlink.ru)

**Singapore**

**D-Link International**

1 International Business Park, #03-12 The Synergy,  
Singapore 609917  
TEL: 65-6774-6233 FAX: 65-6774-6322  
URL: [www.dlink-intl.com](http://www.dlink-intl.com)

**South Africa**

**D-Link South Africa**

Einstein Park II, Block B  
102-106 Witch-Hazel Avenue  
Highveld Technopark, Centurion, Gauteng, Republic  
of South Africa  
TEL: 27-12-665-2165 FAX: 27-12-665-2186  
URL: [www.d-link.co.za](http://www.d-link.co.za)

**Spain**

**D-Link Iberia**

C/Sabino de Arana, 56 Bajos, 08028 Barcelona,  
Spain  
TEL: 34 93 409 0770 FAX: 34 93 491 0795  
URL: [www.dlink.es](http://www.dlink.es)

**Sweden**

**D-Link Sweden**

P. O. Box 15036, S-167 15 Bromma, Sweden  
TEL: 46-(0)8564-61900 FAX: 46-(0)8564-61901  
URL: [www.dlink.se](http://www.dlink.se)

**Taiwan**

**D-Link Taiwan**

2F, No. 119, Pao-chung Road, Hsin-tien, Taipei,

Taiwan  
TEL: 886-2-2910-2626 FAX: 886-2-2910-1515  
URL: [www.dlinktw.com.tw](http://www.dlinktw.com.tw)

- Turkey**                    **D-Link Turkey**  
Regus Offices Beybi Giz Plaza, Ayazaga Mah. Meydan  
Sok. No. 28  
Maslak 34396, Istanbul-Turkiye  
TEL: 90-212-335-2553 FAX: 90-212-335-2500  
URL: [www.dlink.com.tr](http://www.dlink.com.tr)
- U.A.E.**                    **D-Link Middle East**  
P.O. Box 500376, Office No. 103, Building 3  
Dubai Internet City, Dubai, United Arab Emirates  
TEL: 971-4-3916480 FAX: 971-4-3908881  
URL: [www.dlink-me.com](http://www.dlink-me.com)
- U.K.**                    **D-Link Europe (United Kingdom)**  
4<sup>th</sup> Floor, Merit House, Edgware Road, Colindale,  
London  
NW9 5AB United Kingdom  
TEL: 44-020-8731-5555 FAX: 44-020-8731-5511  
URL: [www.dlink.co.uk](http://www.dlink.co.uk)
- U.S.A.**                    **D-Link Systems, Inc.**  
17595 Mt. Herrmann, Fountain Valley, CA 92708,  
USA  
TEL: 1-714-885-6000 FAX: 1-866-743-4905  
URL: [www.dlink.com](http://www.dlink.com)

---

# ***Registration***

Register your product on-line at:

<http://support.dlink.com/register>

Product registration is entirely voluntary and failure to complete or return this form will not diminish your warranty rights.

# Registration Card (Excluding USA)

**Print, type or use block letters.**

Your name: \_\_\_\_\_  
 Mr./Ms \_\_\_\_\_  
 Organization: \_\_\_\_\_ Dept. \_\_\_\_\_  
 Your title at organization: \_\_\_\_\_  
 Telephone: \_\_\_\_\_ Fax: \_\_\_\_\_  
 Organization's full address: \_\_\_\_\_  
 Country: \_\_\_\_\_ Date of purchase \_\_\_\_\_  
 (Month/Day/Year): \_\_\_\_\_

Product Model	Product Serial No.	* Product installed in type of computer (e.g., Compaq 486)	* Product installed Computer serial No.

(\* Applies to adapters only)

**Product was purchased from:**

Reseller's name: \_\_\_\_\_  
 Telephone: \_\_\_\_\_ Fax: \_\_\_\_\_  
 Reseller's full address: \_\_\_\_\_

- 1. Where and how will the product primarily be used?**  
Home Office Travel Company Business Home Business Personal
- 2. How many employees work at installation site?**  
1 employee 2-9 10-49 50-99 100-499 500-999 1000 or more
- 3. What network protocol(s) does your organization use ?**  
XNS/IPX TCP/IP DECnet Other \_\_\_\_\_
- 4. What network operating system(s) does your organization use ?**  
D-Link LANsmart Novell NetWare NetWare Lite SCO Unix/Xenix  
PC NFS 3Com 3+Open Banyan Vines DECnet Pathwork  
Windows NT Windows NTAS Windows '95 Other \_\_\_\_\_
- 5. What network management program does your organization use ?**  
D-View HP OpenView/Windows HP OpenView/Unix SunNet Manager Novell NMS  
NetView 6000 Other \_\_\_\_\_
- 6. What network medium/media does your organization use ?**  
Fiber-optics Thick coax Ethernet Thin coax Ethernet  
10BASE-T UTP/STP 100BASE-TX 100BASE-T4 100VGAnyLAN Other \_\_\_\_\_
- 7. What applications are used on your network?**  
Desktop publishing Spreadsheet Word processing CAD/CAM  
Database management Accounting Other \_\_\_\_\_
- 8. What category best describes your company?**  
Aerospace Engineering Education Finance Hospital Legal Insurance/Real Estate



Manufacturing       Retail/Chainstore/Wholesale       Government  
 Transportation/Utilities/Communication    VAR    Systemhouse/company    Other \_\_\_\_\_

**9. Would you recommend your D-Link product to a friend?**

Yes    No (why?) \_\_\_\_\_    I don't know yet

**10. Your comments on this product:**

PLEASE  
PLACE STAMP  
HERE

**TO:** \_\_\_\_\_  
\_\_\_\_\_  
\_\_\_\_\_

**D-Link®**