

# **Internal Fax Modem 56K**

## **Quick Installation Guide**

## FCC REGULATORY STATEMENTS

### *FCC Part 68 Registration*

This device complies with FCC Part 68 rules, and the use of this device is subject to the following restrictions:

1. The FCC has established rules which permit this device to be directly connected to the telephone network. Standardized jacks are used for these connections. This equipment should not be used on party lines or coin phones.
2. If this device is malfunctioning, it may also be causing harm to the telephone network; this device should be disconnected until the source of the problem can be determined and until repair has been made. If this is not done, the telephone company may temporarily disconnect service.
3. The telephone company may make changes in its facilities, equipment, operation and procedures; if such changes affect the compatibility or use of this device, the telephone company is required to give adequate notice of the situation with the FCC.
4. If the telephone company requests information on what equipment is connected to their lines, inform them of:
  - a. The telephone number to which this unit is connected.
  - b. The Ringer Equivalence Number (REN).
  - c. The USOC jack required.
  - d. The FCC Registration number.

Items (b) and (d) are indicated on the label. The Ringer Equivalence Number (REN) is used to determine how many devices can be connected to your telephone line. In most areas, the sum of the REN's of all the devices on any one line should not exceed 5.0. If too many devices are attached, they may not ring properly.

### *FCC Part 15 Registration*

This device complies with Part 15 of FCC rules. Operation is subject to the following two conditions:

1. This device may not cause harmful interface, and
2. This device must accept any interface received including interface that may cause undesired operation.

This equipment has been tested and found to comply with the limits for a Class B digital device, pursuant to Part 15 of the FCC Rules. These limits are designed to provide reasonable protection against harmful interference in a residential installation. This equipment generates, uses and can radiate radio frequency energy, and if not installed and used in accordance with the instructions, may cause harmful interference to radio communications. However, there is no guarantee that interference will not occur in a particular installation. If this equipment does cause harmful interference to radio or television reception, which can be determined by turning off and on, the user is encouraged to try to correct the interference by one or more of the following measures:

- Reorient or relocate the receiving antenna.
- Increase the distance between the equipment and receiver
- Connect the equipment into an outlet on a circuit different from that to which the receiver is connected.
- Consult an experienced radio/TV technician for help.

### *CTR 21 pan-European Certification*

This equipment has been approved in accordance with Council Decision 98/482/EC for pan-European single terminal connection to the public switched telephone network (PSTN). However, due to differences between the individual PSTNs provided in different countries, the approval does not, of itself, give an unconditional assurance of successful operation on every PSTN network termination point. In the event of problems, you should contact your equipment supplier in the first instance.

This device is designed to work with the notified networks in all EC member states. Nevertheless, some of the network services in individual countries might not be supported, but they will not affect the normal data and fax applications. For example, the metering charge service in Germany. Besides you may encounter difficulty of using PULSE dialing function in some of the countries, such as Nordic countries. This kind of network compatibility is dependent on the

physical and software settings of this device. If the users are desired to use this device on those networks, they should contact the vendor or supplier first.

# Table of Contents

**HARDWARE INSTALLATION ..... 1**

**SOFTWARE INSTALLATION..... 2**

WINDOWS 95/98/98SE

INSTALLATION..... 2

WINDOWS 2000 INSTALLATION ..... 4

WINDOWS ME INSTALLATION..... 7

WINDOWS XP INSTALLATION ..... 9

WINDOWS NT INSTALLATION ..... 15

## HARDWARE INSTALLATION

### *Precautions:*

*Please be sure you take adequate anti-static precautions when handling this product. The simplest way to achieve this is; before you begin and every minute or so during the hardware installation touch a non-painted surface of the computer's chassis.*

1. Before installing the device, make sure the computer is turned off.
2. Remove the expansion slot cover from the computer.
3. Carefully slide the PCI modem card into an available PCI slot, push it evenly and firmly home and ensure it is screwed securely in place using the mounting screw (PCI slots are 85mm long and positioned 40mm from the PC's rear panel. Generally there are several PCI slots side by side).
4. Plug one end of the telephone cable into the Modem line jack and the other end to the telephone jack in the wall.
5. Replace the cover.
6. After hardware installation is done, move on to the software installation.

# SOFTWARE INSTALLATION

## Windows 95/98/98SE Installation

1. Restart the computer system after the modem is correctly plugged into the PCI slot of your computer. Windows will automatically detect the device. Click **Next**.
2. When the following dialog box appears, insert the device driver compact disc into your CD-ROM drive and click **Next**.



3. Select **Specify a location** and press **Browse** to choose the folder **driver/win95/98** in your CD-ROM drive. Then click **Next**.

### Add New Hardware Wizard



Windows will search for new drivers in its driver database on your hard drive, and in any of the following selected locations. Click Next to start the search.

- Floppy disk drives
- CD-ROM drive
- Microsoft Windows Update
- Specify a location:

E:\Driver\Win9X

Browse...

< Back

Next >

Cancel

4. Click **Next** to continue.

### Add New Hardware Wizard



Windows driver file search for the device:

Generic PCI Modem Enumerator

Windows is now ready to install the best driver for this device. Click Back to select a different driver, or click Next to continue.

Location of driver:



E:\DRIVER\WIN9X\WCRDST9.INF

< Back

Next >

Cancel

5. When the following figure appears, click **Finish**. The Installation program will continue.



### Add New Hardware Wizard



Generic PCI Modem Enumerator

Windows has finished installing the software that your new hardware device requires.

< Back

Finish

Cancel

6. The program will proceed automatically. Click **Finish** to complete software installation.

## Windows 2000 Installation

1. Restart the computer system after the modem is correctly plugged into the PCI slot of your computer. Windows will automatically detect the device. Click **Next**.

### Found New Hardware Wizard



Welcome to the Found New Hardware Wizard

This wizard helps you install a device driver for a hardware device.

To continue, click Next.

< Back

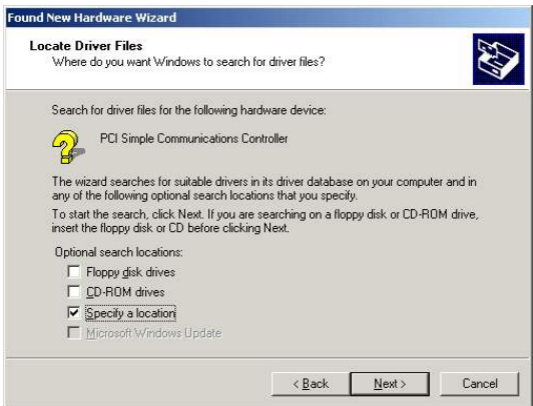
Next >

Cancel

2. Follow the on-screen instructions to proceed.  
(Click **Next** to continue.)



3. Select **Specify a Location**. Click the **Next** button.

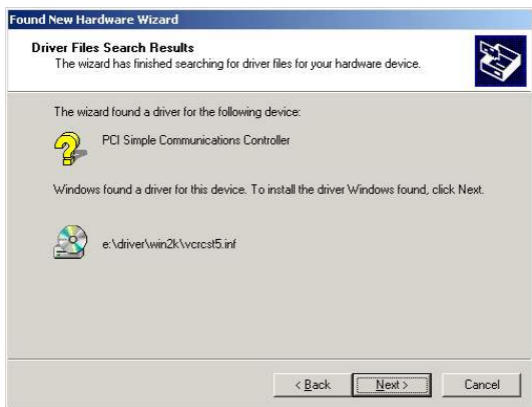


4. Load the Compact Disc that contains the device driver into your CD-ROM drive. Click **Browse** and select the proper file

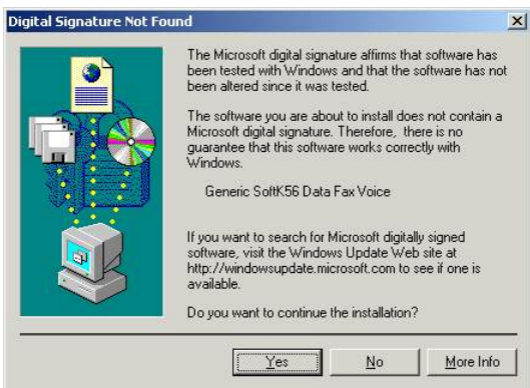
location with the disc drive followed by **Driver\Win2K**.



5. Follow the on-screen instructions to proceed. (Click **Next** to continue.)



6. When Windows prompt you to continue the installation. Select **Yes**.



7. Click **Finish** to complete the software installation.



## Windows ME Installation

1. Restart the computer system after the modem is correctly plugged into the PCI slot of your computer. Windows will automatically detect the device. Select **Specify the location of the driver [Advanced]**, (Click **Next** to continue.).

### Add New Hardware Wizard



Windows has found the following new hardware:

PCI Communication Device

Windows can automatically search for and install software that supports your hardware. If your hardware came with installation media, insert it now and click Next.

What would you like to do?

- Automatic search for a better driver (Recommended)
- Specify the location of the driver (Advanced)

< Back

Next >

Cancel

2. Load the Compact Disc that contains the device driver into your CD-ROM drive. Click **Browse** and select the proper file location with the disc drive followed by **Driver\Millennium**.

### Add New Hardware Wizard



Windows will search for new drivers in its driver database on your hard drive, and in any of the following selected

- Search for the best driver for your device. (Recommended).
  - Removable Media (Floppy, CD-ROM...)
  - Specify a location:
    - E:\Driver\Millennium
    -
- Display a list of all the drivers in a specific location, so you can select the driver you want.

< Back

Next >

Cancel

3. Follow the on-screen instructions to proceed. (Click **Next** to continue.)

### Add New Hardware Wizard



Windows driver file search for the device:

Generic PCI Modem Enumerator

Windows is now ready to install the best driver for this device. Click Back to select a different driver, or click Next to continue.

Location of driver:



E:\DRIVER\MILLEN~5\WCRCST2.INF

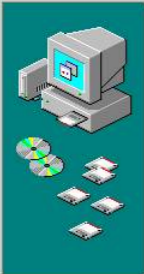
< Back

Next >

Cancel

4. Click **Finish** to complete the software installation.

### Add New Hardware Wizard



Generic PCI Modem Enumerator

Windows has finished installing the new hardware device.

< Back

Finish

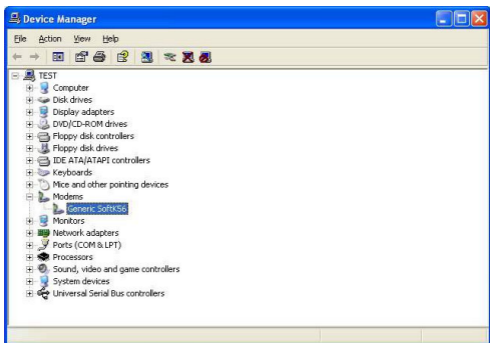
Cancel

## Windows XP Installation

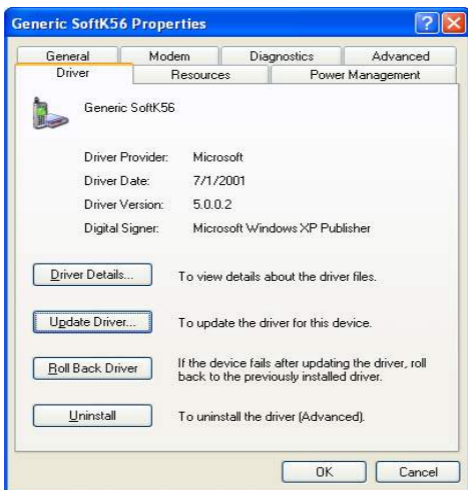
Restart the computer system after the modem is properly plugged into the PCI slot of your computer. Windows XP will automatically detect the device.

1. Go to **Control Panel** → **System** → **Hardware** → **Device Manager** → **Modems**.

When Windows prompt the following picture, Right-click **Generic SoftK56**.  
Select **Properties**.



2. When you see the following picture, select **Driver**. Then click **Update Driver...** button.

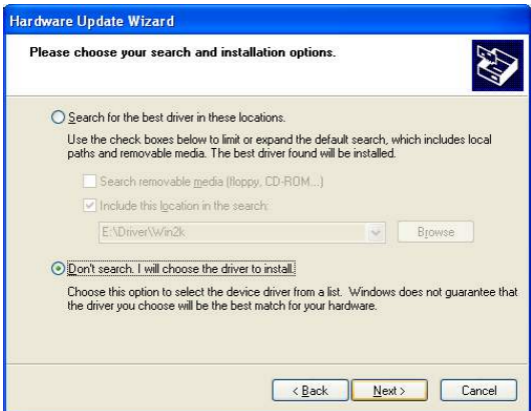


3. Click **OK** and load the device driver Compact Disc into your CD-ROM drive.

4. Select **Install from a list of specific location (Advanced)** when you see the following picture. Click **Next** to continue.

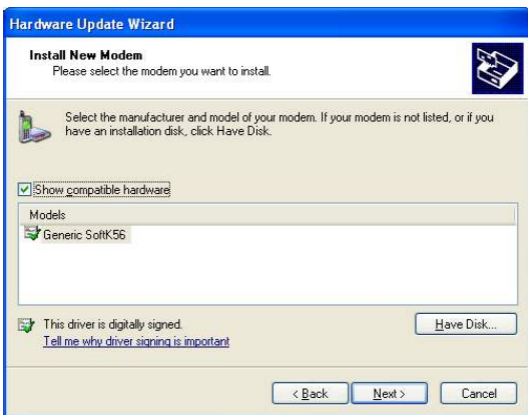


5. Select **Don't search. I will choose the driver to install.** Click **Next**.

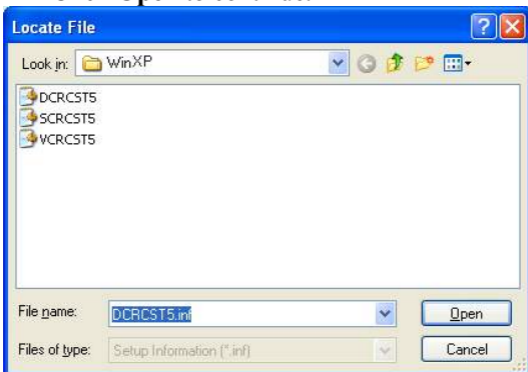


6. Click **Have Disk**.

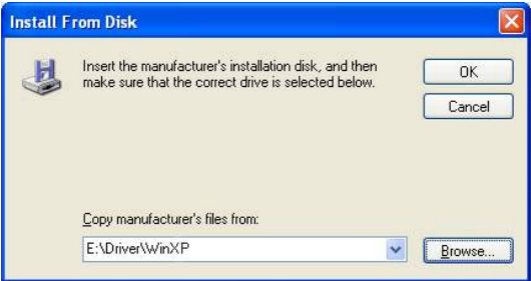




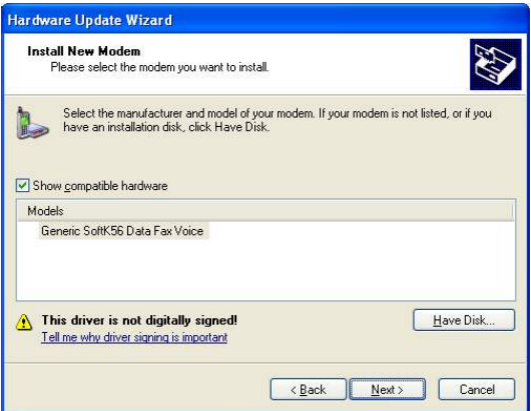
7. Click the **Browse...** button to select the **E:\Driver\WinXP** folder in your CD-ROM drive.
8. Select the **DCRCST5** file in WinXP folder. Click **Open** to continue.



9. Click **OK**.



## 10. Click **Next**.



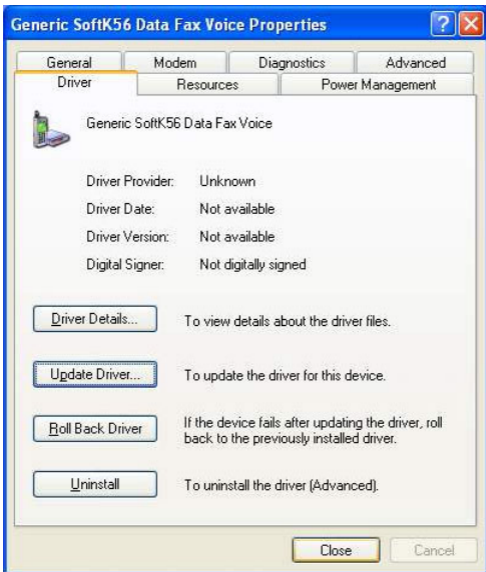
## 11. Click **Continue Anyway** when the following picture appears.



12. The installation program will proceed automatically.
13. Click **Finish** to complete the software installation.



14. Click **Close**.



## Windows NT Installation

1. Reboot the computer system after the modem is correctly plugged into your PCI slot of computer.
2. Load the device driver compact disk in the CD-ROM drive.
3. Start Windows NT.
4. Go to **My Computer**.
5. Click the CD-ROM drive. Click the **driver\winnt** folder. Or you may click the **Browse** button to select the CD-ROM drive and the **driver\winnt** folder.
6. Double-click **setup.exe**. The installation program will proceed automatically.