

VULCAN

CATALOG OF REPLACEMENT PARTS

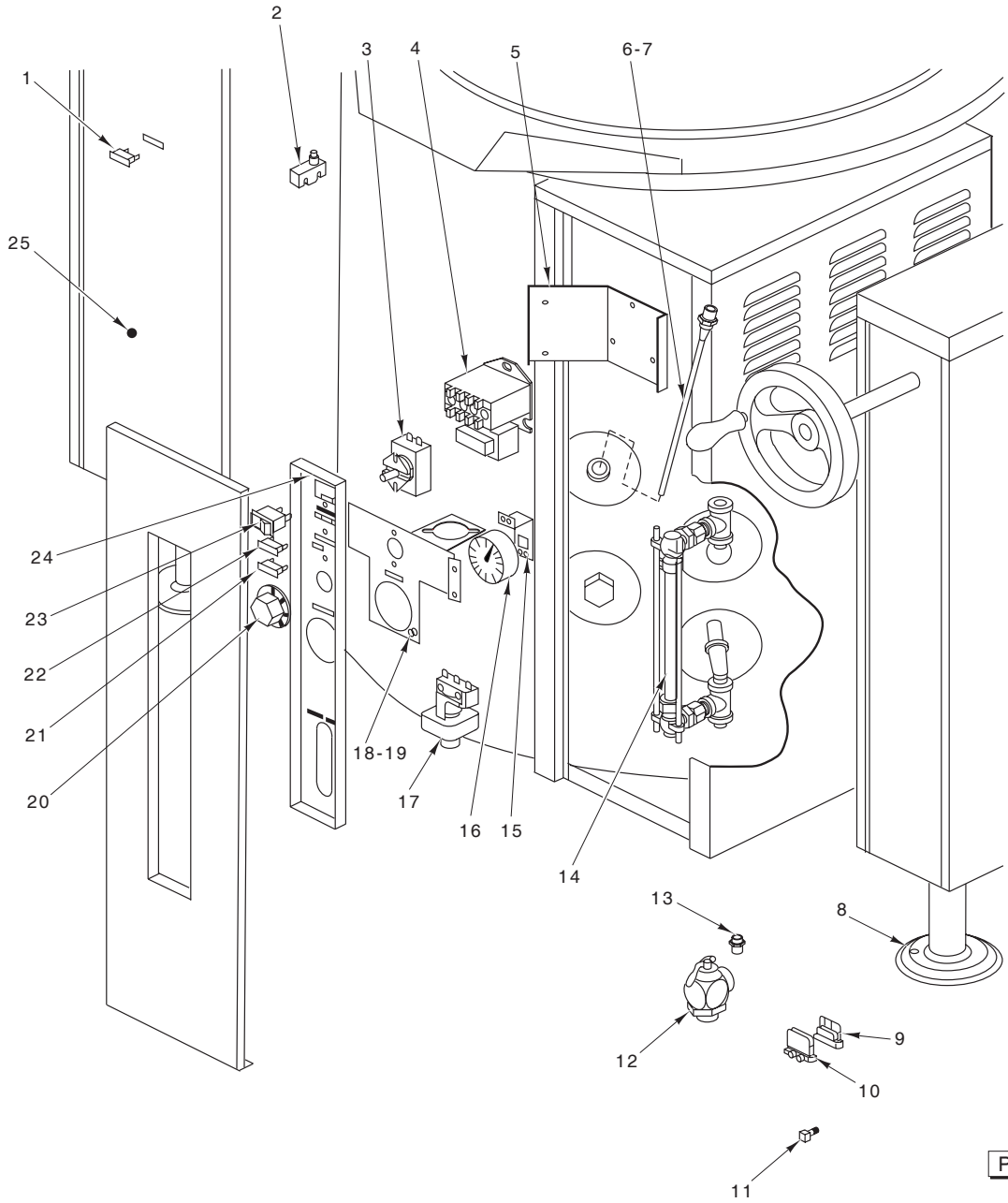
GAS TILTING KETTLES

MODEL

| | |
|---------|-----------|
| VGLT-20 | ML-52994 |
| VGLT-30 | ML-114955 |
| VGLT-40 | ML-52995 |
| VGLT-60 | ML-52996 |



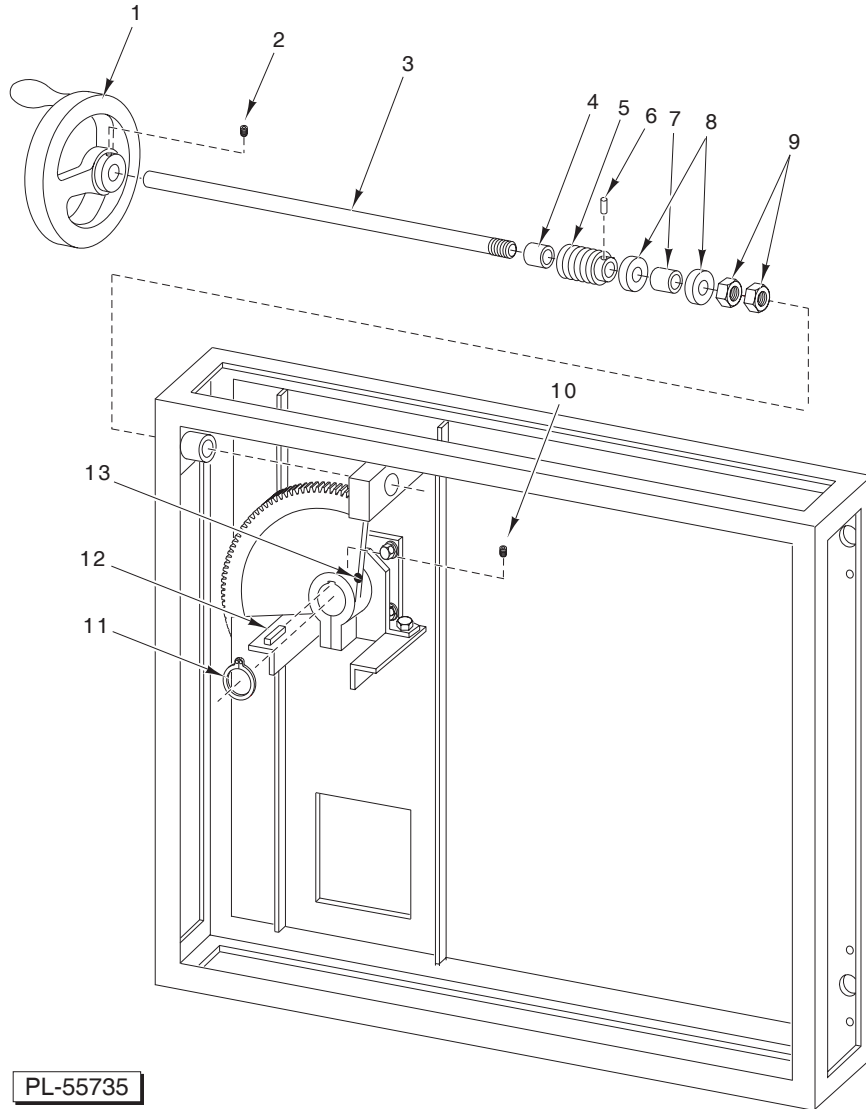
For additional information on Vulcan-Hart Company or to locate an authorized parts and service provider in your area, visit our website at www.vulcanhart.com



CONTROLS AND COMPONENTS

CONTROLS AND COMPONENTS

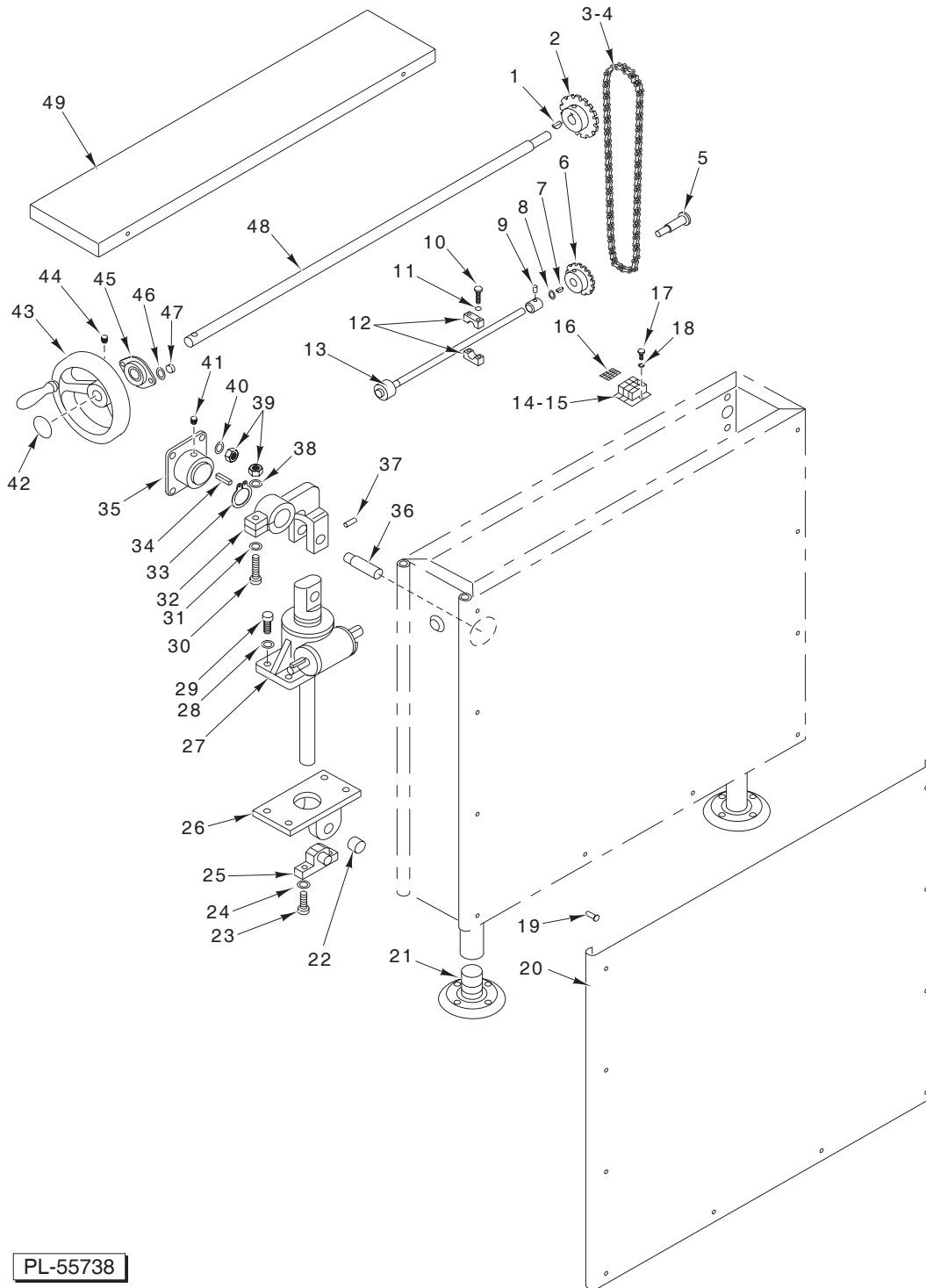
| ILLUS. | PART NO. | NAME OF PART | AMT. |
|----------|-----------|---------------------------------------------------------|------|
| PL-55734 | | | |
| 1 | 00-850589 | Pilot Light – Green (24 V.) | 1 |
| 2 | 00-881971 | Interlock Switch | 1 |
| 3 | 00-844483 | Thermostat | 1 |
| 4 | 00-853021 | L.W. Cut Off (PC Board) (Current Construction) | 1 |
| 5 | 00-844482 | L.W. Mounting Bracket | 1 |
| 6 | 00-851572 | Probe (20 & 40 Gallon) | 1 |
| 7 | 00-851572 | Probe (60 Gallon) | 1 |
| 8 | 00-836958 | Flanged Foot | 4 |
| 9 | 00-840511 | Terminal Block | 2 |
| 10 | 00-843969 | End Section | 1 |
| 11 | 00-844493 | Ground Lug | 1 |
| 12 | 00-844492 | Relief Valve (50 PSI) | 1 |
| 13 | 00-881961 | Vent | 1 |
| 14 | 00-854273 | Sight Glass Assy. | 1 |
| 15 | 00-844488 | Pressure Gauge Bracket | 1 |
| 16 | 00-881979 | Pressure Gauge | 1 |
| 17 | 00-844322 | Pressure Switch | 1 |
| 18 | 00-844489 | Mounting Bracket (20, 30, & 40 Gallon) | 1 |
| 19 | 00-844490 | Mounting Bracket (60 Gallon) | 1 |
| 20 | 00-844487 | Dial | 1 |
| 21 | 00-844486 | Pilot Light – Amber | 1 |
| 22 | 00-844485 | Pilot Light – Red | 1 |
| 23 | 00-844321 | Power Switch | 1 |
| 24 | 00-844484 | Poly Panel | 1 |
| 25 | 00-844481 | Label – Instruction | 1 |
| | 00-850216 | Cover (20 Gallon Kettle) | 1 |
| | 00-850217 | Cover (30 & 40 Gallon Kettle) | 1 |
| | 00-844424 | Cover (60 Gallon Kettle) | 1 |
| | 00-844319 | L.W. Cut Off (Mechanical) (Previous Construction) | 1 |
| | 00-856601 | Bottom Cover VGLT20 | 1 |
| | 00-854293 | Bottom Cover VGLT60 | 1 |
| | 00-851018 | Control Panel Cover (VGLT20, 30, 40) | 1 |
| | 00-851020 | Control Panel Cover (VGLT60) | 1 |



**TILTING MECHANISM
(FOR 20, 30, 40, & 60 GALLON UNITS)
(PREVIOUS CONSTRUCTION)**

**TILTING MECHANISM
(FOR 20, 30, 40, & 60 GALLON UNITS)
(PREVIOUS CONSTRUCTION)**

| ILLUS. | PART NO. | NAME OF PART | AMT. |
|----------|-----------|-------------------------------|------|
| PL-55735 | | | |
| 1 | 00-881962 | Handwheel | 1 |
| 2 | 00-853253 | Set Screw | 1 |
| 3 | 00-854316 | Tilt Shaft | 1 |
| 4 | 00-844455 | Bushing | 1 |
| 5 | 00-855086 | Worm & Segment Gear Kit | 1 |
| 6 | 00-836952 | Tension Pin | 1 |
| 7 | 00-844455 | Bushing | 1 |
| 8 | 00-881963 | Thrust Bearing | 2 |
| 9 | 00-844456 | Jam Nut | 2 |
| 10 | 00-853489 | Set Screw | 1 |
| 11 | 00-844457 | Retaining Ring | 1 |
| 12 | 00-850166 | Key | 1 |
| 13 | 00-855086 | Worm & Segment Gear Kit | 1 |



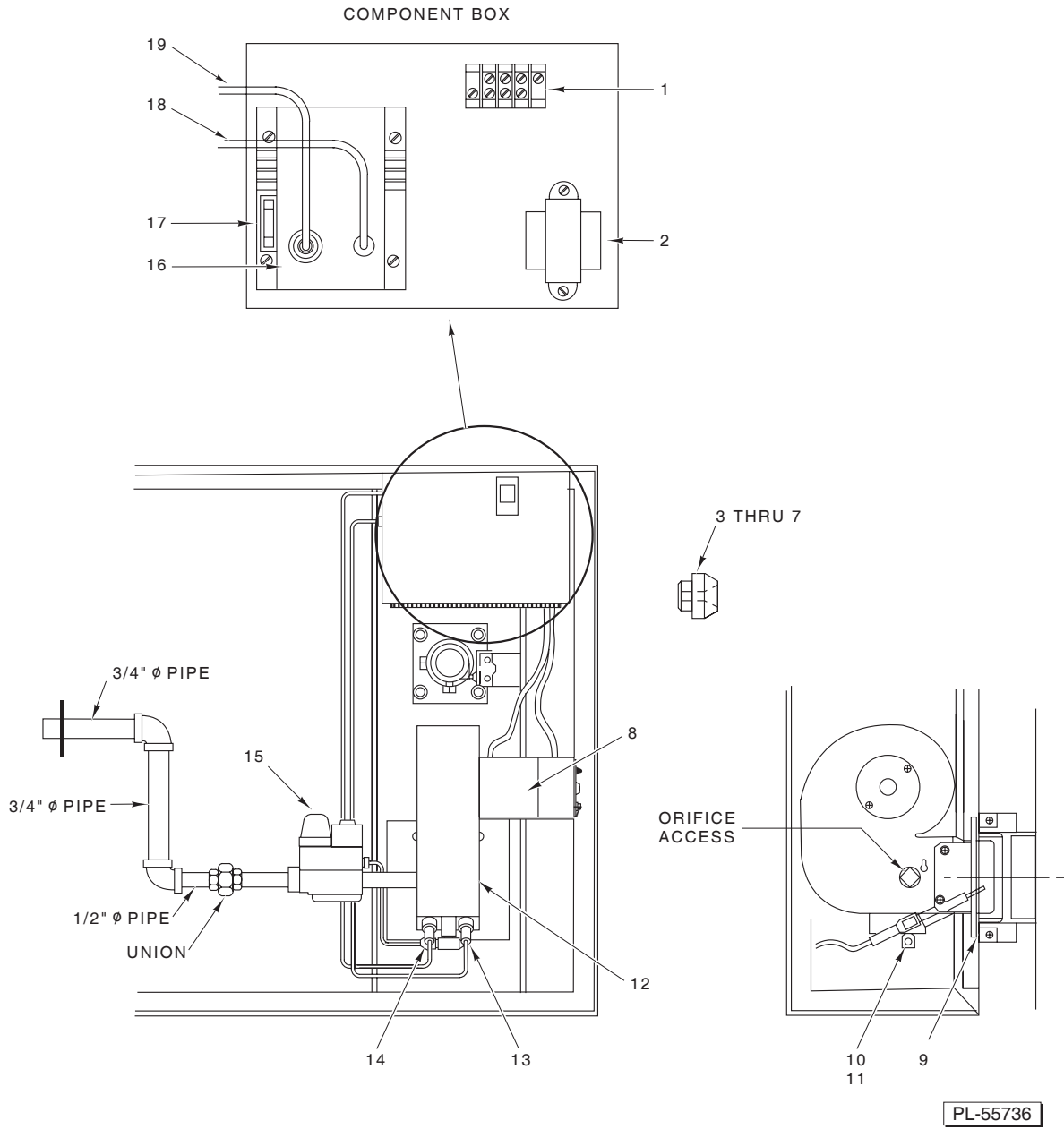
PL-55738

**TILT CONSOLE AND PARTS
(CURRENT CONSTRUCTION)
STARTING WITH S/N AP1028722 (30 GALLON),
AP1028441 (40 GALLON), AP1028356 (60 GALLON)**

**TILT CONSOLE AND PARTS
(CURRENT CONSTRUCTION)
STARTING WITH S/N AP1028722 (30 GALLON),
AP1028441 (40 GALLON), AP1028356 (60 GALLON)**

| ILLUS. PL-55738 | PART NO. | NAME OF PART | AMT. |
|--------------------|-----------------|-------------------------------------------------------|------|
| 1 | 00-854304-00027 | Key | 1 |
| 2 | 00-854304-00030 | Sprocket | 1 |
| 3 | 00-854304-00031 | Chain | 1 |
| 4 | 00-854304-00008 | Link | 1 |
| 5 | 00-854304-00029 | Shaft – Output | 1 |
| 6 | 00-854304-00028 | Sprocket | 1 |
| 7 | 00-854304-00027 | Key | 1 |
| 8 | 00-854304-00026 | Retaining Ring | 1 |
| 9 | 00-854304-00025 | Set Screw 1/4-28 x 3/8 | 1 |
| 10 | 00-854304-00015 | Self-Tapping Screw 10-32 x 1 1/4 Phil. Truss Hd. | 2 |
| 11 | 00-854304-00014 | Washer | 2 |
| 12 | 00-854304-00024 | Shaft Guide | 2 |
| 13 | 00-854304-00023 | Flexible Shaft Assy. | 1 |
| 14 | 00-840511 | Terminal Block | 2 |
| 15 | 00-843969 | End Section | 1 |
| 16 | 00-852016 | Earth ID Tag | 1 |
| 17 | 00-854304-00016 | Self-Tapping Screw 8-32 x 1/4 Slotted Rd. Hd. | 3 |
| 18 | 00-854304-00017 | Washer #8 External | 3 |
| 19 | 00-850073 | Self-Tapping Screw 10-32 x 1/2 Slotted Truss Hd. | 10 |
| 20 | 00-854304-00013 | Side Panel | 1 |
| 21 | 00-836958 | Adjustable Foot | 2 |
| 22 | 00-854304-00012 | Bearing | 2 |
| 23 | 00-854304-00007 | Cap Screw 3/8-16 x 1 1/4 Hex Hd. | 4 |
| 24 | 00-854304-00005 | Washer | AR |
| 25 | 00-854304-00011 | Base Bracket Assy. | 1 |
| 26 | 00-854304-00010 | Base Assy. | 1 |
| 27 | 00-854304-00009 | Screw Jack | 1 |
| 28 | 00-854304-00005 | Washer | AR |
| 29 | 00-854304-00007 | Cap Screw 3/8-16 x 1 1/4 Hex Hd. | 4 |
| 30 | 00-854304-00006 | Cap Screw 3/8-16 x 2 1/8 Hex Hd. | 1 |
| 31 | 00-854304-00005 | Washer | AR |
| 32 | 00-854304-00004 | Arm | 1 |
| 33 | 00-844457 | Retaining Ring | 1 |
| 34 | 00-850166 | Key | 1 |
| 35 | 00-851738 | Trunnion Housing Assy. | 1 |
| 36 | 00-854304-00018 | Pin | 1 |
| 37 | 00-854304-00019 | Set Screw 1/4-20 x 1/2 Soc. Hd. | 1 |
| 38 | 00-854304-00020 | Lockwasher 3/8 | AR |
| 39 | 00-853310 | Nut 3/8-16 Hex | 7 |
| 40 | 00-854304-00020 | Lockwasher 3/8 | AR |
| 41 | 00-854304-00021 | Grease Fitting | 1 |
| 42 | 00-851360 | Tilt Label | 1 |
| 43 | 00-881962 | Handwheel | 1 |
| 44 | 00-853253 | Set Screw | 1 |
| 45 | 00-854304-00002 | Front Bearing | 1 |
| 46 | 00-854304-00022 | Washer | 2 |
| 47 | NS-015-16 | Nut 5/16-18 Hex | 2 |
| 48 | 00-854304-00003 | Tilt Shaft | 1 |
| 49 | 00-854304-00001 | Console Cover | 1 |

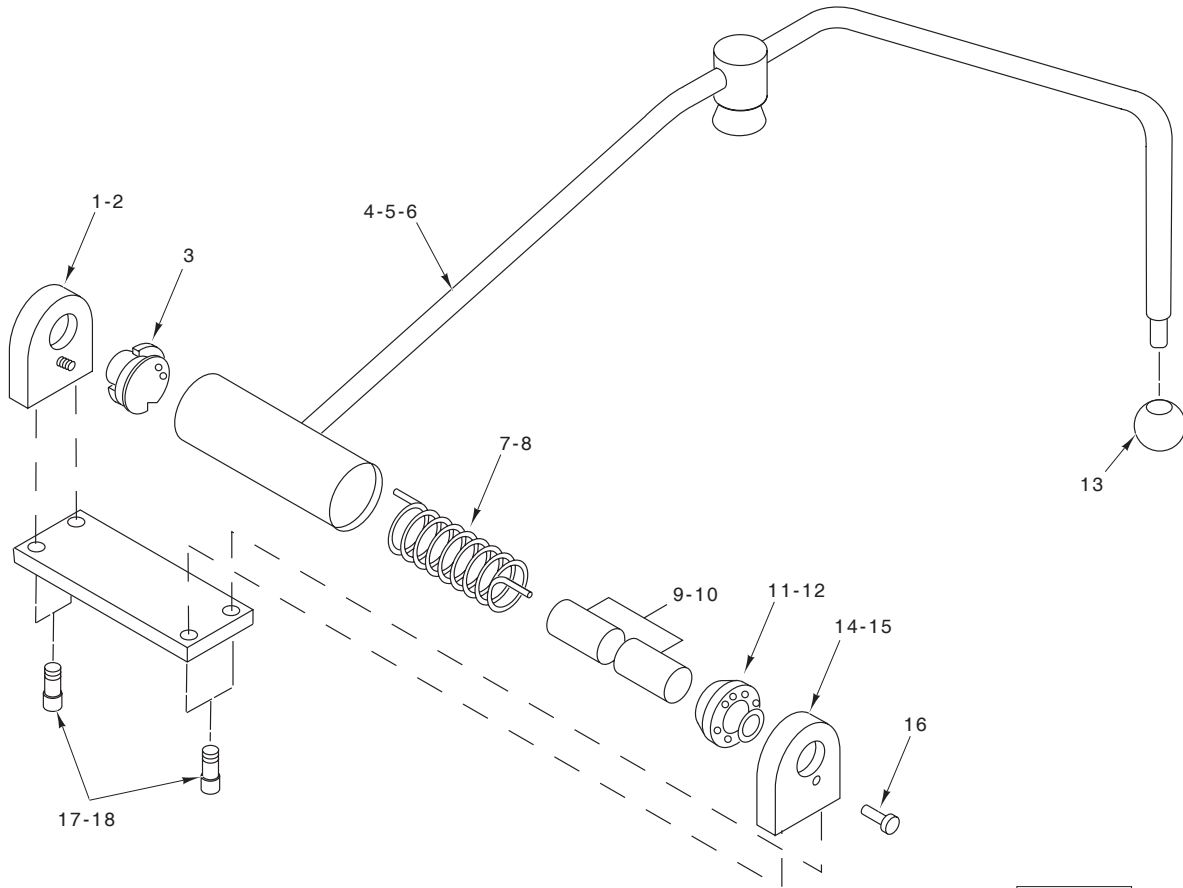
GAS TILTING KETTLES REPLACEMENT PARTS



GAS COMPONENTS

GAS COMPONENTS

| ILLUS. | PART NO. | NAME OF PART | AMT. |
|----------|-----------------|--------------------------------------------------|------|
| PL-55736 | | | |
| 1 | 00-850199 | Terminal Block | 1 |
| 2 | 00-850200 | Transformer | 1 |
| 3 | 00-850207 | Orifice #23 (20 Gallon) (Natural Gas) | 1 |
| 4 | 00-850208 | Orifice #17 (30 & 40 Gallon) (Natural Gas) | 1 |
| 5 | 00-850209 | Orifice #12 (60 Gallon) (Natural Gas) | 1 |
| 6 | 00-850211 | Orifice #32 (30 & 40 Gallon) (LP Gas) | 1 |
| 7 | 00-850212 | Orifice #28 (60 Gallon) (LP Gas) | 1 |
| 8 | 00-850202 | Motor (120 V.) | 1 |
| 9 | 00-850206 | Gasket | 1 |
| 10 | 00-853546-00002 | Orifice Tee #55 (Natural Gas) | 1 |
| 11 | 00-853546 | Orifice Tee #58 (LP Gas) | 1 |
| 12 | 00-851008 | Complete Burner Assy. | 1 |
| 13 | 00-850412 | Ignitor (Sensor) | 1 |
| 14 | 00-850412 | Ignitor | 1 |
| 15 | 00-850201 | Gas Regulator | 1 |
| 16 | 00-850198 | Direct Spark Ignitor Module | 1 |
| 17 | 00-850177 | Fuse (3 Amp.) (250 V.) | 1 |
| 18 | 00-851642 | Sensor Cable | 1 |
| 19 | 00-850197 | Ignition Cable | 1 |
| | 00-855519 | Blower Wheel (VGLT60) | 1 |
| | 00-850442 | Burner Box (VGLT60) | 1 |
| | 00-852957 | Burner Box (VGLT20) | 1 |
| | 00-851837 | Burner Box (VGLT30, VGLT40) | 1 |



PL-55737

SPRING ASSIST HINGE ASSEMBLY

SPRING ASSIST HINGE ASSEMBLY

| ILLUS. | PART NO. | NAME OF PART | AMT. |
|----------|-----------------|-----------------------------------------------------------------------------------------------|------|
| PL-55737 | | | |
| 1 | 00-836993 | End Stop Plate (20, 30, & 40 Gallon) | 1 |
| 2 | 00-836993 | End Stop Plate (60 Gallon) | 1 |
| 3 | 00-836983 | Rotary Disc | 1 |
| 4 | 00-850213 | Handle Assy. (20 Gallon) | 1 |
| 5 | 00-850214 | Handle Assy. (30 & 40 Gallon) | 1 |
| 6 | 00-850215 | Handle Assy. (60 Gallon) | 1 |
| 7 | 00-844367-00035 | Spring (20, 30, & 40 Gallon) | 1 |
| 8 | 00-836990 | Spring (60 Gallon) | 1 |
| 9 | 00-844367-00034 | Cores (20, 30, & 40 Gallon) | 2 |
| 10 | 00-836989 | Cores (60 Gallon) | 2 |
| 11 | 00-836979 | Stationary Disc (20, 30, & 40 Gallon) | 1 |
| 12 | 00-836988 | Stationary Disc (60 Gallon) | 1 |
| 13 | 00-836964 | Knob | 1 |
| 14 | 00-836978 | End Lock Plate (20, 30, & 40 Gallon) | 1 |
| 15 | 00-844367-00040 | End Lock Plate (60 Gallon) | 1 |
| 16 | 00-836986 | Lock Pin | 1 |
| 17 | 00-844367-00036 | Cap Screws (20, 30, & 40 Gallon) | 4 |
| 18 | SC-041-10 | Cap Screws (60 Gallon) | 4 |
| | 00-844459 | Hinge Assy. (20, 30, & 40 Gallon) (Incls. Items 1, 3, 4, 5, 7, 9, 11, 13, 14, 16, & 17) | 1 |
| | 00-844461 | Hinge Assy. (60 Gallon) (Incls. Items 2, 6, 8, 10, 12, 15, & 18) | 1 |

RECOMMENDED SPARE PARTS

| PART NO. | NAME OF PART | AMT. |
|-----------------|------------------------------------------------------|------|
| 00-851572 | Probe (20, 30, 40 Gallon) | 1 |
| 00-854294-00002 | Probe (60 Gallon) | 1 |
| 00-844319 | Low Water Cut Off (Mechanical) | 1 |
| 00-853021 | Low Water Cut Off (PC Board) | 1 |
| 00-844483 | Thermostat | 1 |
| 00-844487 | Thermostat Knob | 1 |
| 00-844321 | Power Switch | 2 |
| 00-850198 | Ignition Module | 1 |
| 00-881991 | Fuse (3-amp 25V) | 2 |
| 00-881992 | Fuse Holder | 2 |
| 00-844322 | Pressure Switch | 1 |
| 00-850207 | Burner Orifice (Nat. Gas) (20 Gallon) (#23) | 2 |
| 00-850210 | Burner Orifice (L.P. Gas) (20 Gallon) (#36) | 2 |
| 00-850208 | Burner Orifice (Nat. Gas) (30/40 Gallon) (#17) | 2 |
| 00-850211 | Burner Orifice (LP. Gas) (30/40 Gallon) (#32) | 2 |
| 00-850209 | Burner Orifice (Nat. Gas) (60 Gallon) (#12) | 2 |
| 00-850212 | Burner Orifice (L.P. Gas) (60 Gallon) (#28) | 2 |
| 00-844492 | Pressure Relief Valve (50 lb.) | 1 |
| 00-881979 | Pressure Gauge | 1 |
| 00-854273 | Sight Glass Assy. | 1 |
| 00-881962 | Air Vent | 1 |
| 00-850200 | Transformer | 1 |
| 00-844327 | Purge Relay | 1 |
| 00-844485 | Red Cooking Light | 1 |
| 00-844486 | Amber Low Water Light | 1 |