



DSL Equipment Installation Guide Netopia® 45413 Router

Version 2.2

©2002 MegaPath Networks Inc. All Rights Reserved.



Table of Contents

Follow Steps 1 through 5 to complete the DSL Equipment Installation

Step 1: Verify Your System Requirements and Documents	3
Step 2: Verify the Contents of Your DSL Equipment Kit	4
Step 3: Install a Telephone Filter on Every Telephone Line	5
Step 4: Install the Netopia® DSL Router	7
Step 5: Configure Your Computer	
Windows® 95 and 98 Dynamic Configuration	8
Windows® 95 and 98 Static Configuration	11
Windows® 2000 Dynamic Configuration	15
Windows® 2000 Static Configuration	17
Windows® NT Dynamic Configuration	19
Installing TCP/IP for Windows	22
Macintosh DHCP Configuration	26
Macintosh Static Configuration	29

Customer Support: **1-877-611-6342**

IMPORTANT NOTE: This guide portrays the typical steps for the installation process. Please follow the instructions. Some computer or network configurations may cause software windows to appear that are not depicted in this guide. Please read and follow the instructions on those screens to continue the installation process. Verify that you are installing your DSL equipment **AFTER** the “Phone Company Commit Date” given to you when you ordered your DSL Internet Service. MegaPath Networks Inc. and its affiliates have no responsibility for any personal injury or property damage which may result from your installation of DSL Equipment as discussed in this guide. MegaPath Networks and its affiliates specifically disclaim any liability for such injury or damage. By proceeding with this installation, you assume all risk of personal injury or property damage. Please consult the documentation provided by your PC vendor to identify any impact on your warranty.



Welcome to MegaPath DSL service. You will find everything you need to install your DSL service in this kit. It is important to carefully and exactly follow the step-by-step instructions for your operating system. Note: Do NOT use the instructions that came with your Netopia.

Step 1: Verify Your System Requirements and Documents

This MegaPath DSL kit was designed for installation on computers operating with Microsoft® Windows® 2000, Windows® ME, Windows® 98, Windows® 95, Windows® NT, and Macintosh computers with operating system version 8.2 and higher.

PC System Requirements: You must also meet the requirements listed below in order to successfully complete the installation of your MegaPath DSL kit.

- PC with a Pentium-class processor
- CD-ROM Drive
- 166 MHz
- 25 Mb free disk space
- 32 Mb RAM
- Built-in Network Interface Card; consult your system's documentation for details. ***Please note: Many systems already have a Network Interface Card installed. If your system already has a card installed, and it is not currently in use, you DO NOT need to install an additional NIC Card.***

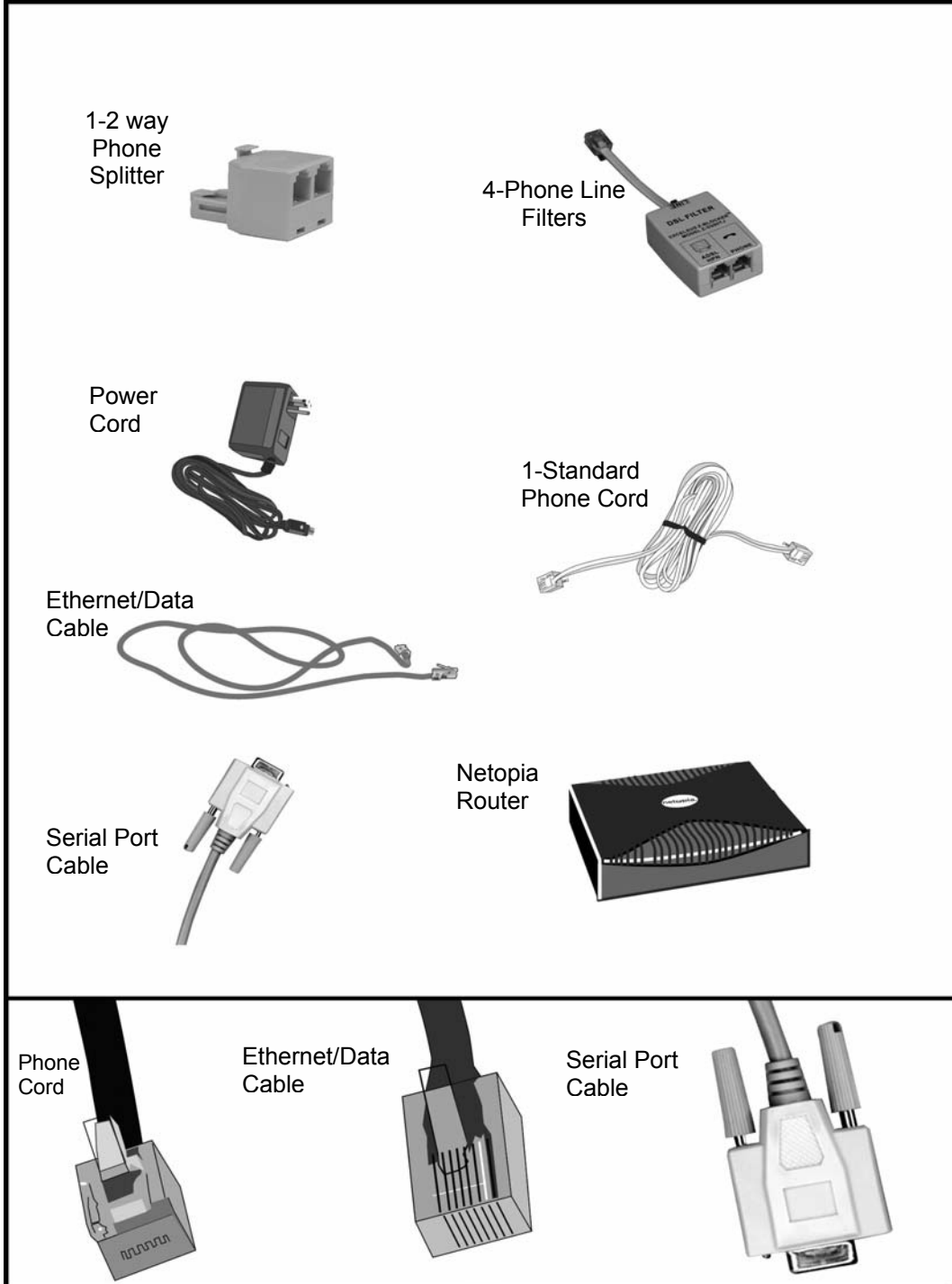
Macintosh System Requirements:

- System 8.2 or higher

You must install this kit AFTER the "Phone Company Commit Date" given to you when you ordered your DSL Internet Service from MegaPath.

Netopia Router

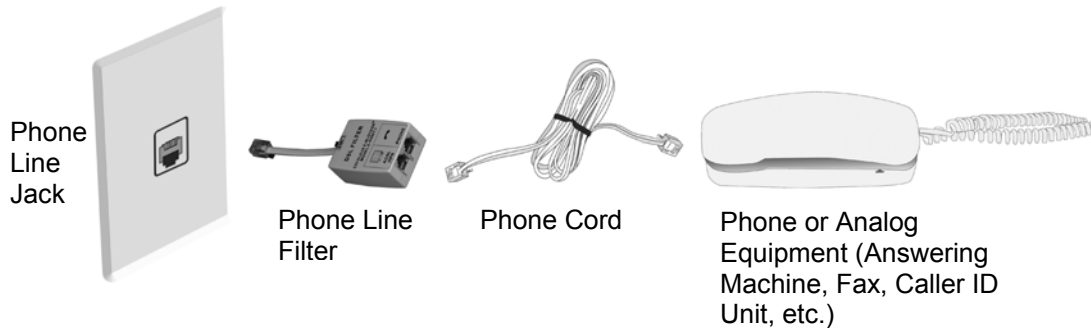
Step 2: Verify the Contents of Your DSL Equipment



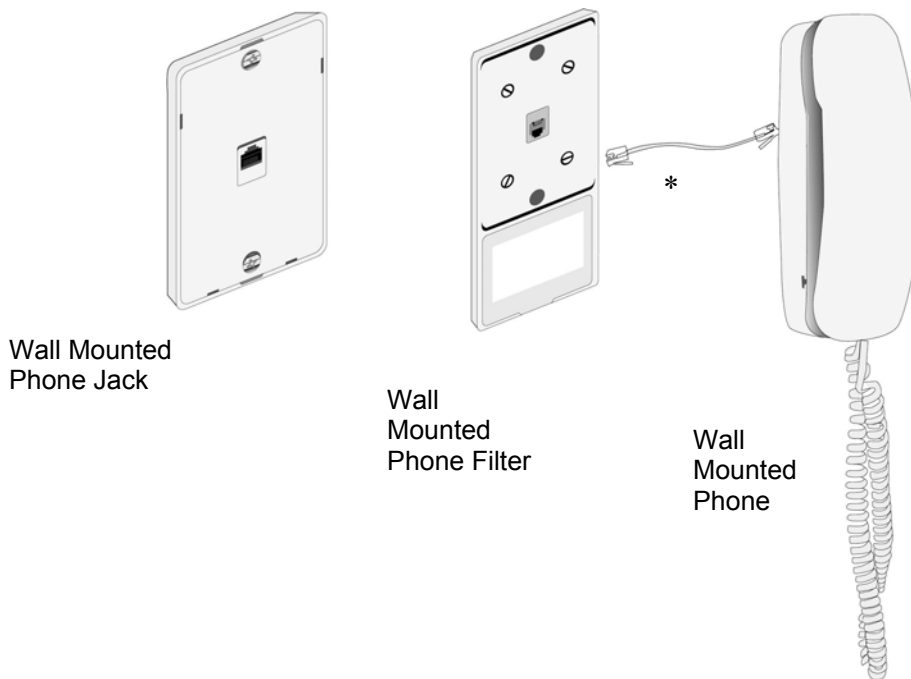
Step 3: Install a Telephone Filter on Every Telephone Line

IMPORTANT: Install filters on every phone jack on your DSL line that will be used for an analog device to prevent interference from the digital signal provided by DSL service. **A filter is required between all phones, answering machines, fax machines, Caller ID units or analog routers and the phone jack for the DSL line. Connect the phone line connected to your router to the side of the filter labeled "ADSL HPN"**

a. Desktop Phones and Analog Devices



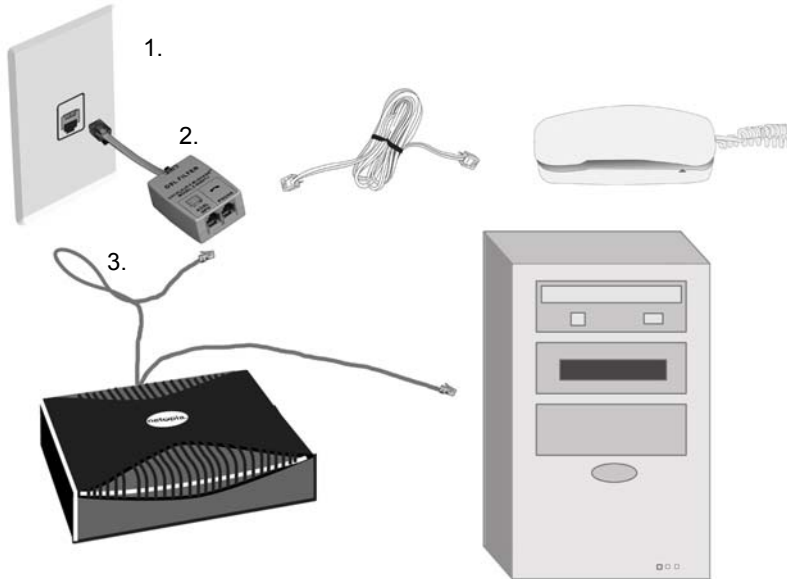
b. Wall Mounted Phones



*Some wall-mounted phones connect directly to the filter and will not need this cord.

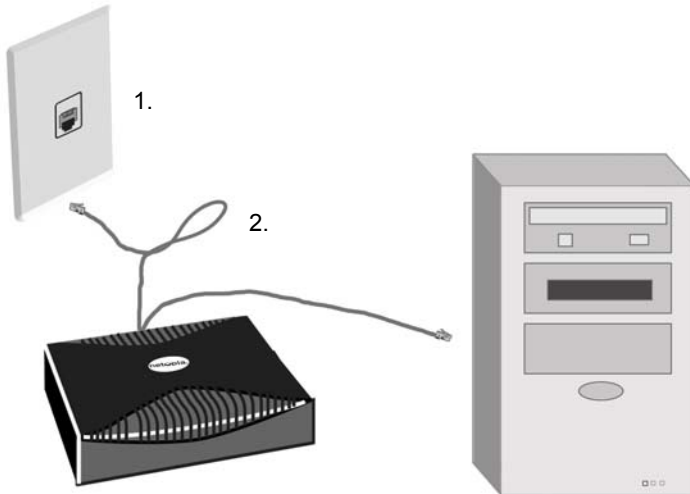


c. DSL Router and Analog Device on the Same Jack



1. Connect the filter to your phone jack.
2. A filter is required between all phones, answering machines, fax machines, Caller ID units or analog routers and the phone jack for the DSL line.
3. Connect the phone line connector to your router to the side of the filter labeled "ADSL HPN".

d. DSL Router Running Directly from the Wall Jack with No Shared Devices



1. Connect the router to your phone jack.
2. No filter is required if the Netopia does not share the line with an analog device.

e. A NIC (Ethernet) card is required to complete this installation. If you do not have an available NIC card, contact your computer vendor or authorized technician to arrange for installation.

NOTE: The NIC card must be properly installed before beginning the installation of the DSL kit components.

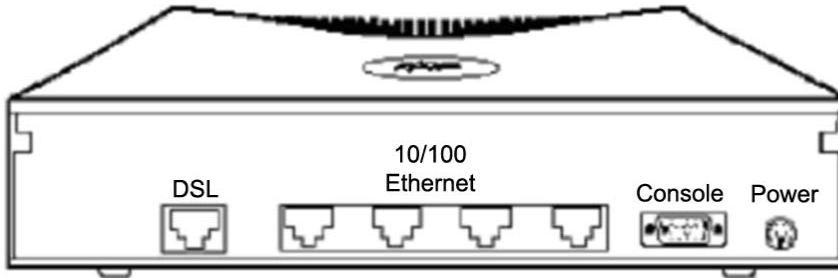
Warnings and Cautions:

Refer to your PC manual for instructions on opening your PC to install new hardware. Follow all safety warnings and precautions as specified by your PC manufacturer.

In Addition:

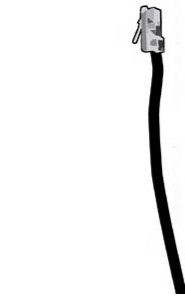
- Back up any important files on your hard drive.
 - Turn off your PC and unplug the power cord.
 - Unplug all cables connecting your PC to the peripheral devices.
- Note the port location of each device so you can easily reconnect the cables later.

Step 4: Install the Netopia® 45413 DSL Router

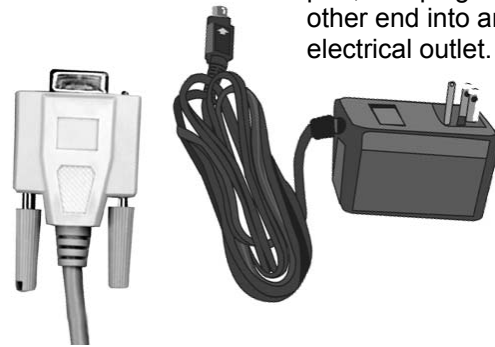


Insert the connector from the power adapter to the power port, and plug the other end into an electrical outlet.

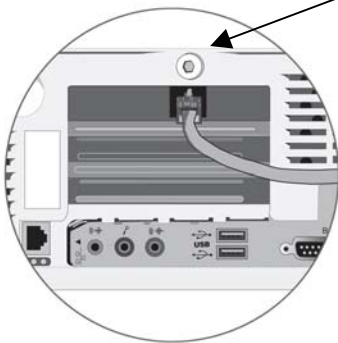
Connect one end of the phone cord to the jack labeled “DSL” on your router, and the other end to the side of the filter labeled “ADSL HPN”. This is not necessary if the router does not share the jack with another analog device such as a phone, answering machine, fax machine, etc.



Plug one end of the Ethernet cable into one of the empty ports labeled Ethernet.



Use Serial Port cable to transfer data between your Router and the PC if you wish to reconfigure the Router. **(This step is not needed for normal installation. Call MegaPath Networks at 1-877-611-6342 before you start to reconfigure the Router.)**



Connect the other end of the Ethernet cable to the Ethernet port on your computer.

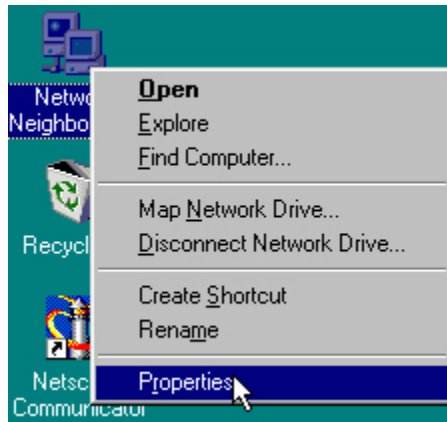
PC Environment

Step 5: Configuring Your Computer

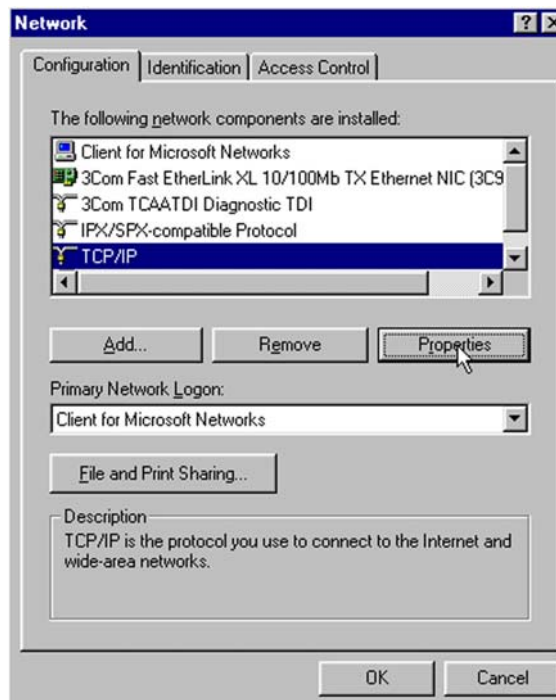
Before you use your new DSL connection, you must have TCP/IP set up on your computer. If you do not see TCP/IP listed in your Network Components, go to page 22 and follow the instructions for installing TCP/IP.

Windows® 95 and Windows® 98 Dynamic Configuration (Recommended)

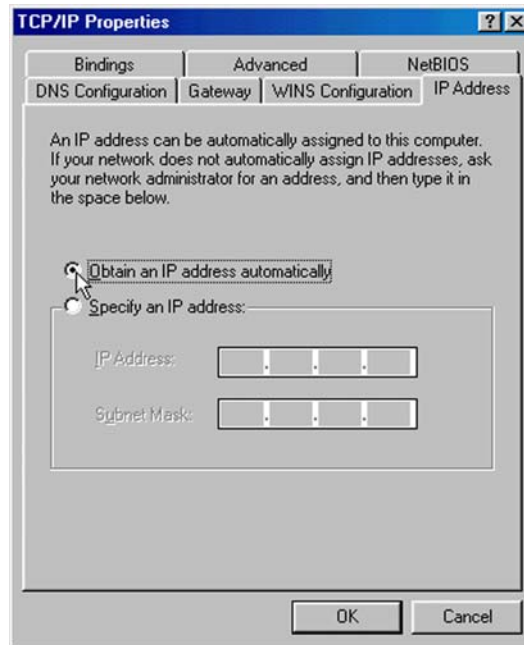
1. Find the Network Neighborhood icon on your desktop. Right click on **Network Neighborhood** and select **Properties**. Once highlighted, left click once on your mouse.



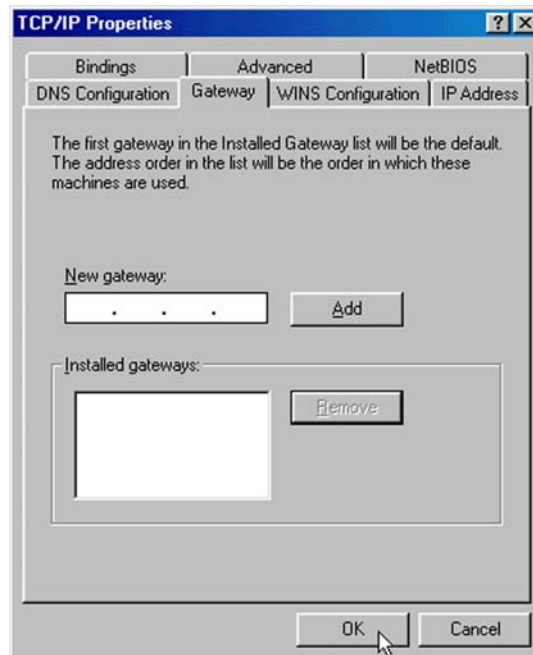
2. Highlight **TCP/IP** and click **Properties**. If you do not see TCP/IP in the list, go to the section in this guide titled *Installing TCP/IP*.



3. Select the *IP Address* tab. Click **Obtain an IP Address automatically**.

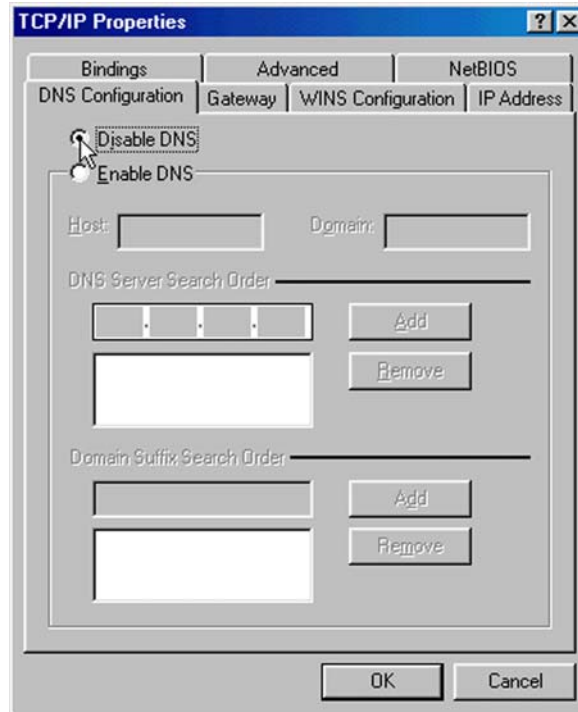


4. Click on the **Gateway** tab. If the box under *Installed Gateways* contains any IP addresses, **highlight the IP addresses** and click **Remove**.





5. Click on the **DNS Configuration** tab. Click **Disable DNS**. Click **OK**.

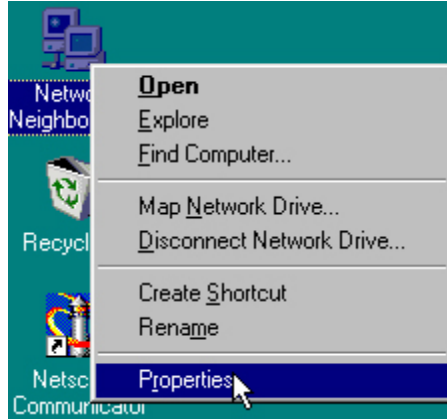


6. When prompted, **reboot** the computer. Click **OK**.

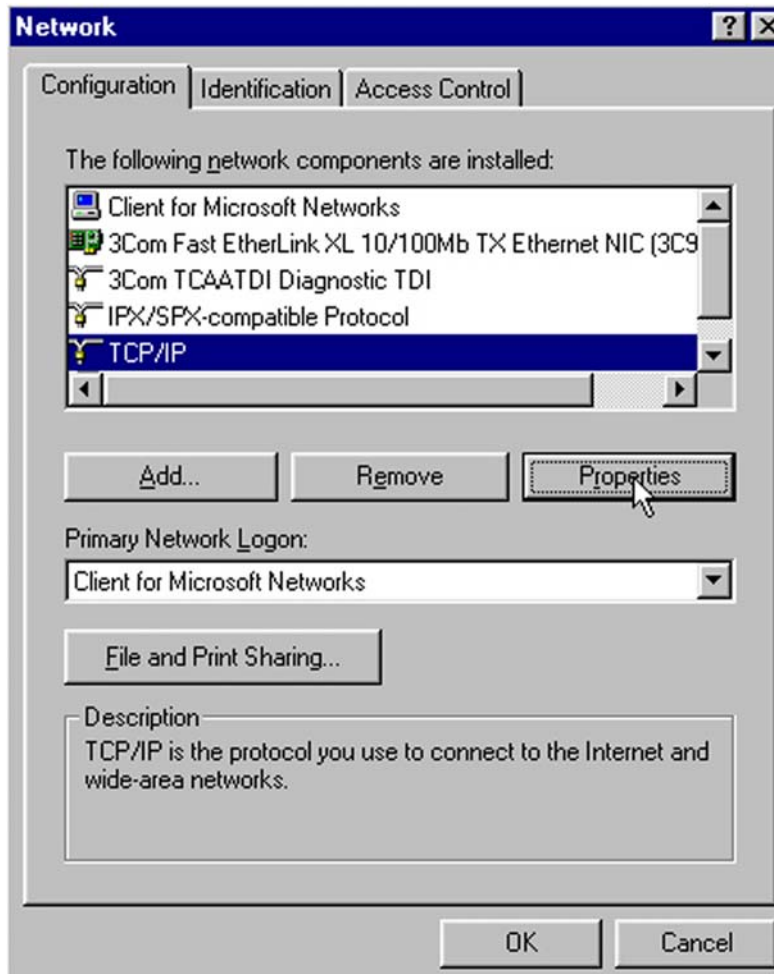
7. To check the success of your setup, open a web browser and visit **www.megapath.net**. While there, you will find more information about additional services as well as setup and other support information.

Windows® 95 and Windows® 98 Static Configuration (Optional)

1. Find the *Network Neighborhood* icon on your desktop. Right click on **Network Neighborhood** and select **Properties**. Once highlighted, **left click** on your mouse.



2. Highlight **TCP/IP** and click on the **Properties** button. If you do not see TCP/IP in the list, go to the section in this guide titled *Installing TCP/IP*.

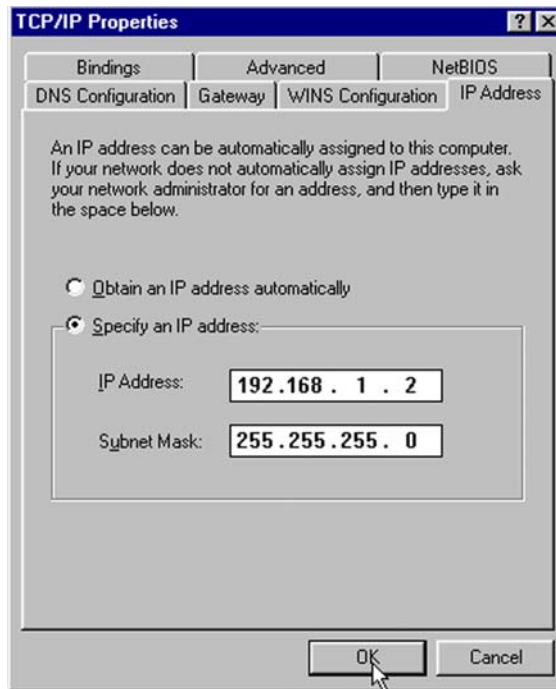


3. Select the **IP Address** tab. Click **Specify an IP Address**. Move your cursor to the IP address dialog box. Enter **192.168.1.2** as your IP address. Your subnet mask is **255.255.255.0**. If you have multiple computers, use the same subnet mask number and different IP addresses for each computer.

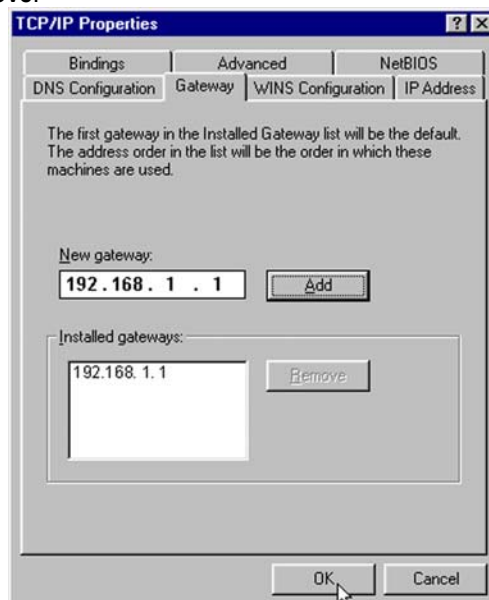
192.168.1.3 - second computer

192.168.1.4 - third computer

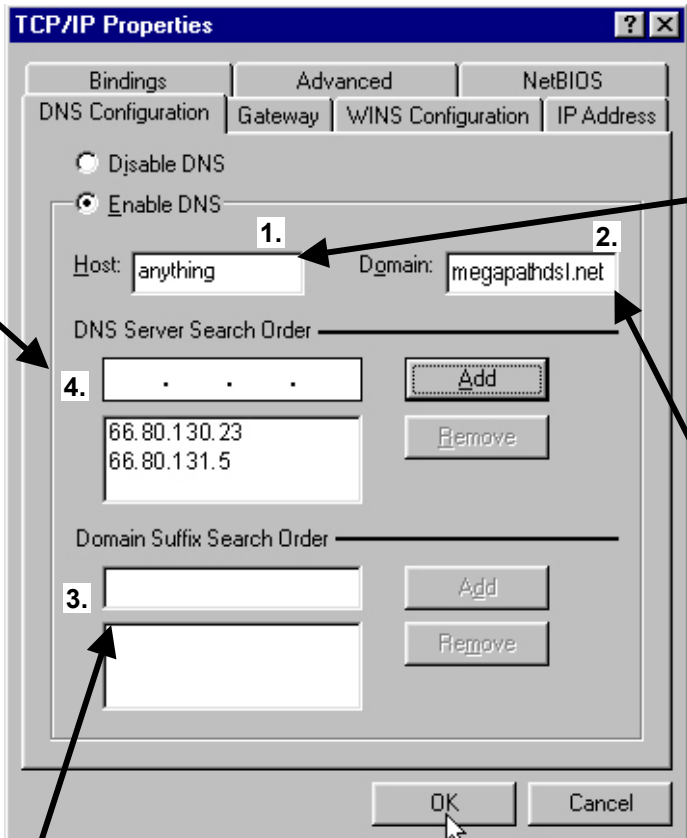
192.168.1.5 - fourth computer



4. Click on the **Gateway** tab. Enter **192.168.1.1** in the box under *New Gateway*. We recommend that you remove all other gateways that might be entered in your system. To do so, highlight the gateway addresses in the box under *Installed Gateways* and click **Remove**.



5. **If you already have an Internet connection**, this window will be populated with the information required by your current Internet provider. It is necessary to remove this information and replace it with the information below. Click on the **DNS configuration** tab. Enter the information as shown below.



1. Move your cursor to the **Host** dialog box. **Highlight** existing content and click your keyboard **Delete** button. Type in the word **anything**.

2. Move your cursor to **Domain** dialog box. **Highlight** existing content and click your keyboard **Delete** button. Type in the word **megapathdsl.net**

3. Move your cursor to this dialog box if it contains information. **Highlight** all of the entries and click the **Remove** button to the right of the dialog box.

4. Move your cursor to this dialog box and enter **66.80.130.23** and click **Add**. The IP address will appear in the box shown in Step 3. Enter **66.80.131.5** and click **Add**. The IP address will appear in the box shown in Step 3.



If you do not already have an Internet Service provider, move your cursor to each dialog box and enter the information as shown.

3. Type in **66.80.130.23** and click **Add**. The IP address will appear in the box shown in box 4.

Type in **66.80.131.5** and click **Add**. The IP address will appear in the box shown in box 4.

1. Type in the word **anything**.

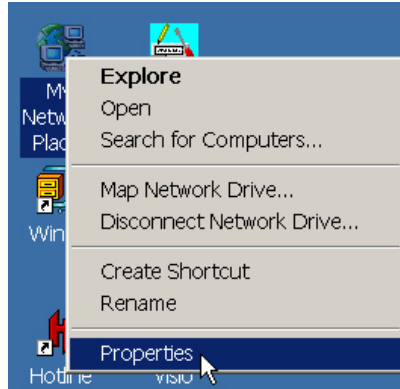
2. Type in the word **megapathdsl.net**.

6. Click **OK**. When prompted, restart the computer.

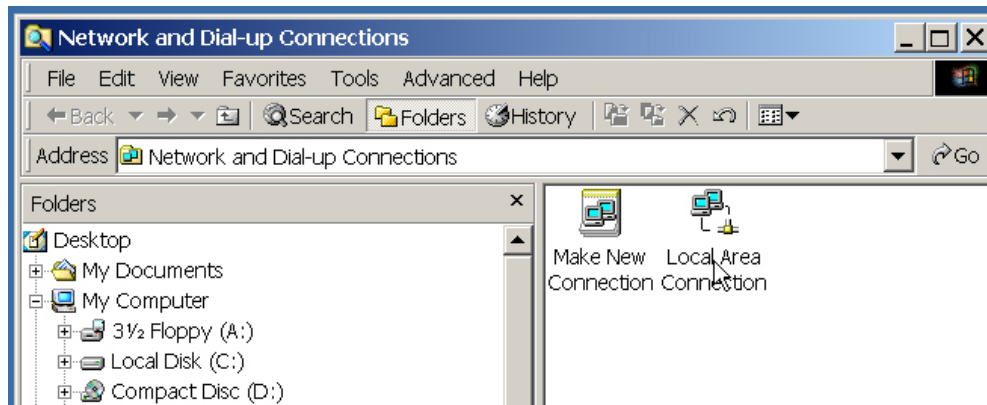
7. To check the success of your setup, open a web browser and visit www.megapath.net. While there, you will find more information about additional services as well as setup and other support information.

Windows® 2000 Dynamic Configuration (Recommended)

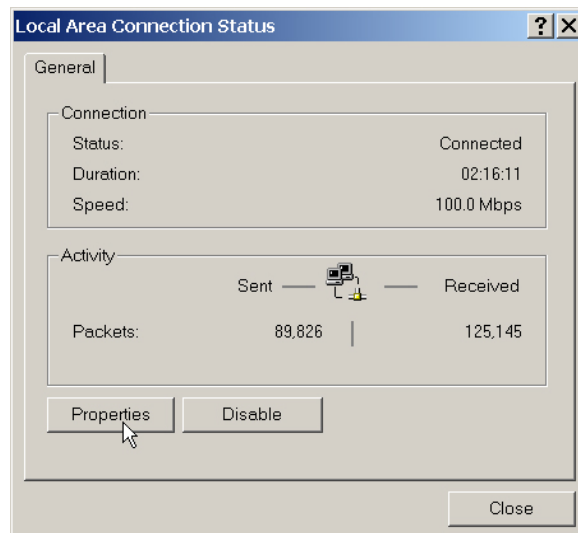
1. Right click on **My Network Places** and select **Properties**. Once highlighted, **left click** once on your mouse.



2. Double click on **Local Area Connection**.

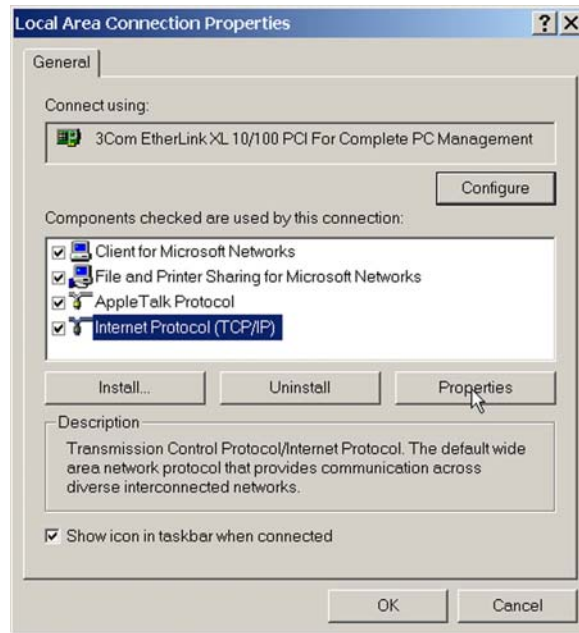


3. Select the **Properties** button.

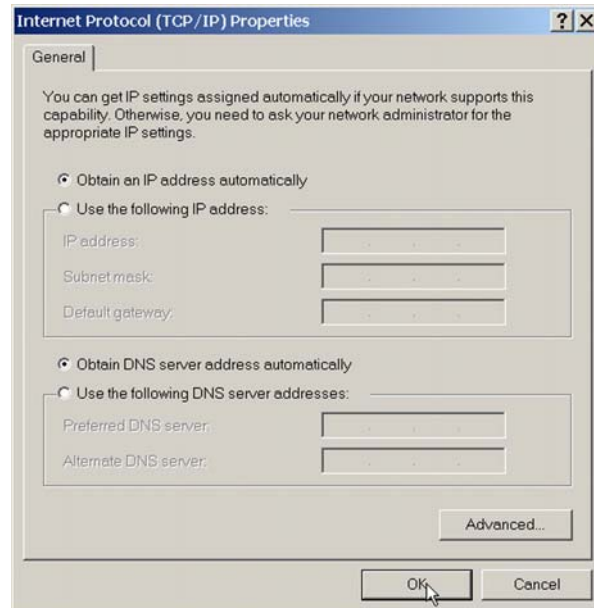




4. Highlight **Internet Protocol (TCP/IP)** and click on the **Properties** button. If you do not see TCP/IP in the list, go to the section in this guide titled *Installing TCP/IP*.



5. Click **Obtain an IP address automatically**. Click **Obtain DNS server address automatically**.



6. Click **OK** twice to close the last two screens and click **Close** to close the last screen. Under most circumstances, Windows 2000 will not require a reboot. If it does, please do so.

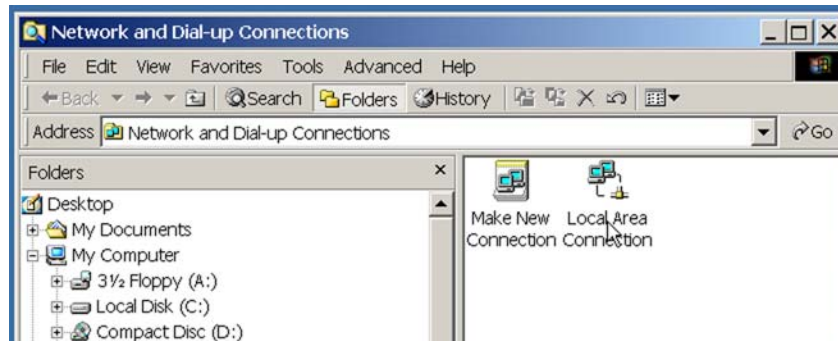
7. To check for the success of your setup, open a web browser and visit **www.megapath.net**. While there, you will find more information about additional services as well as setup and other support information.

Windows® 2000 Static Configuration (Optional)

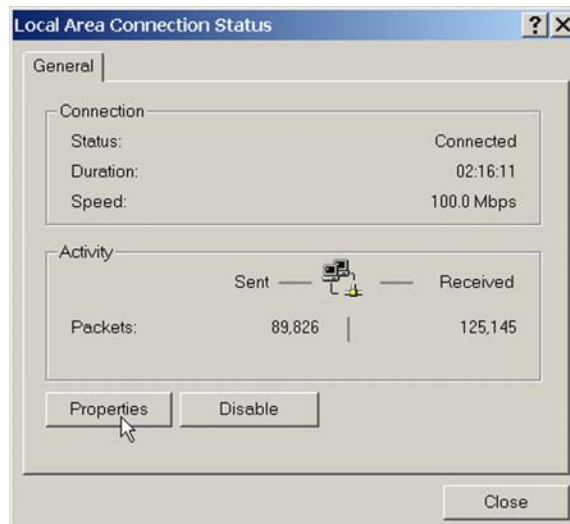
1. Right click on **My Network Places** and select **Properties**. Once highlighted, **left click** once on your mouse.



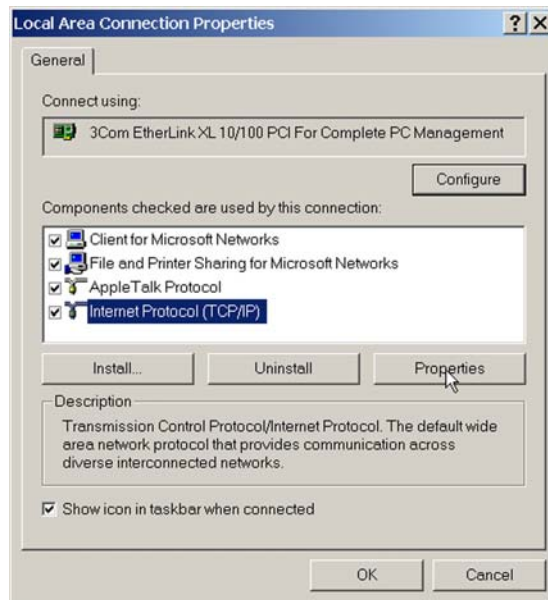
2. Double click on **Local Area Connection**.



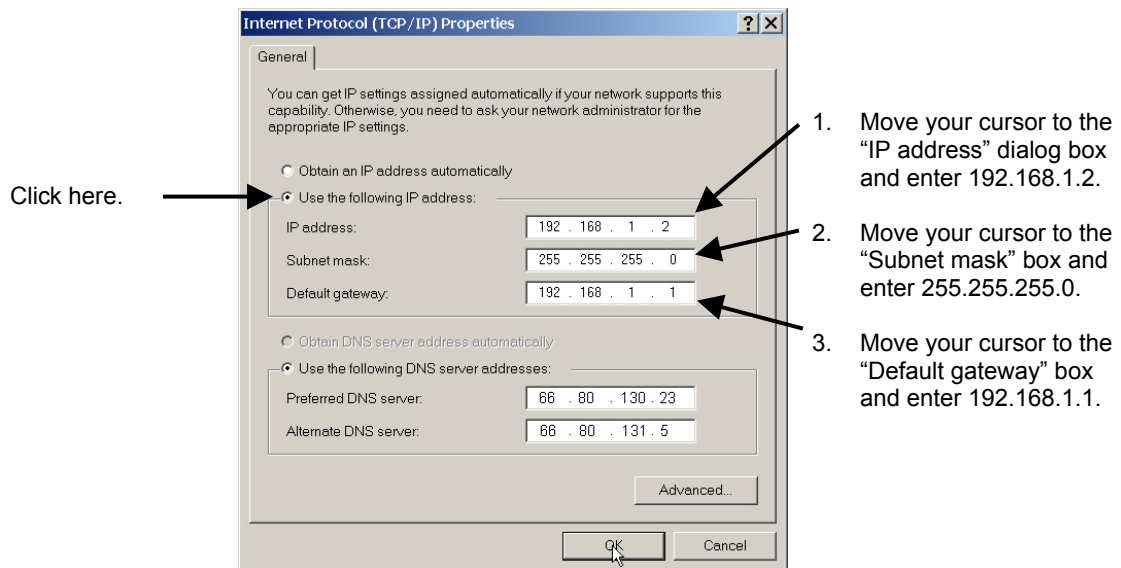
3. Select the **Properties** button.



4. Highlight **Internet Protocol (TCP/IP)** and click on the **Properties** button. If you do not see TCP/IP in the list, go to the section in this guide titled *Installing TCP/IP*.



5. Click **Use the following IP address**. Enter in your **static IP address, Subnet Mask, and Gateway** as shown below.



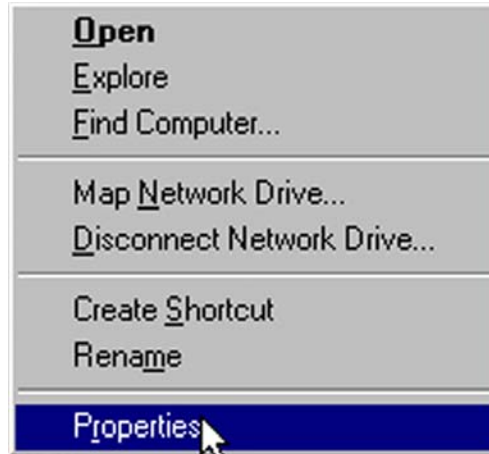
6. Click **OK**. Click **OK** twice to close the last two screens and click **Close** to close the last screen. Under most circumstances, Windows 2000 will not require a reboot. If it does, please do so. If you have multiple computers, use the same subnet mask number and different IP addresses for each computer.

- 192.168.1.3 - second computer.**
- 192.168.1.4 - third computer**
- 192.168.1.5 - fourth computer**

7. Click **OK**. To check for the success of your setup, open a web browser and visit **www.megapath.net**. While there, you will find more information about services as well as setup and other support information.

Windows® NT Dynamic Configuration (Recommended)

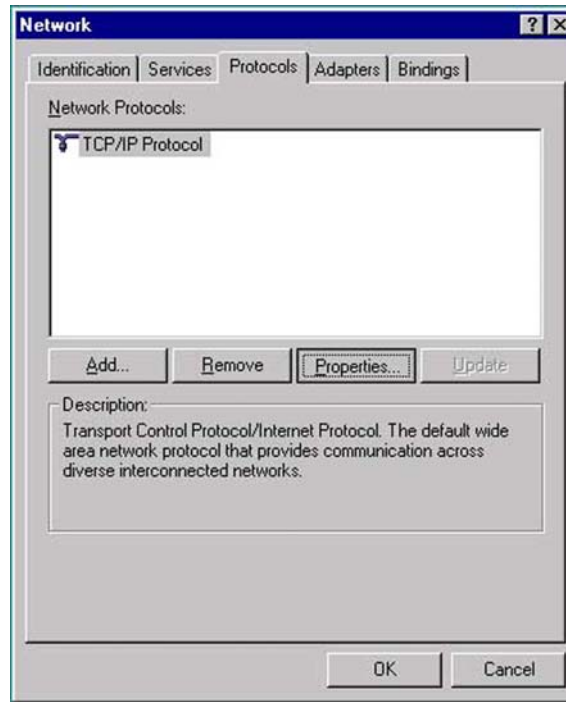
1. Right click on **My Network Places** and select **Properties**. Once highlighted, **left click once** on your mouse.



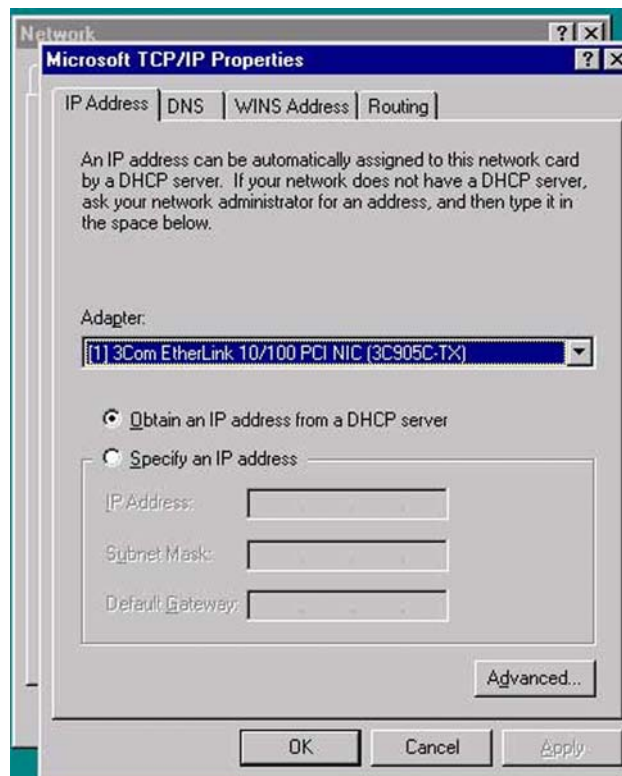
2. Single click on the **Protocols** tab at the top of the window.



3. In the next window, you will see *TCP/IP Properties*. Highlight this, and left click on the **Properties** button at the bottom of the Network Protocols window.

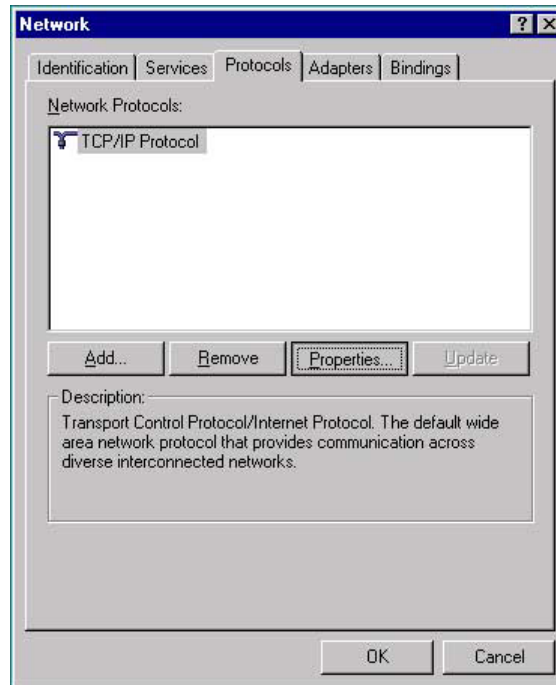


4. The following window will appear. Click on **Obtain an IP address from DHCP server** and then click **OK**.





5. Click **OK** in this window as well. Under most circumstances, Windows NT will not require a reboot. If it does, please do so.

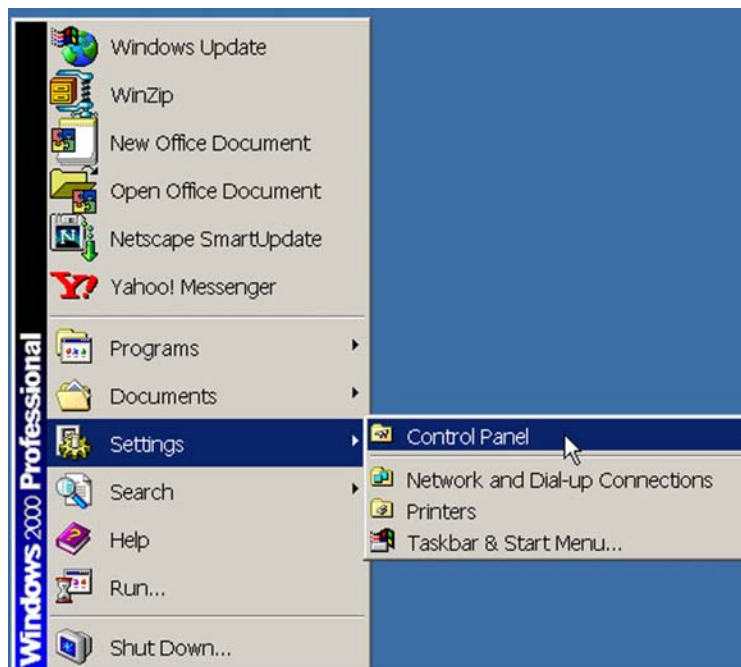


6. To check for the success of your setup, open a web browser and visit **www.megapath.net**. While there, you will find more information about additional services as well as setup and other support information.

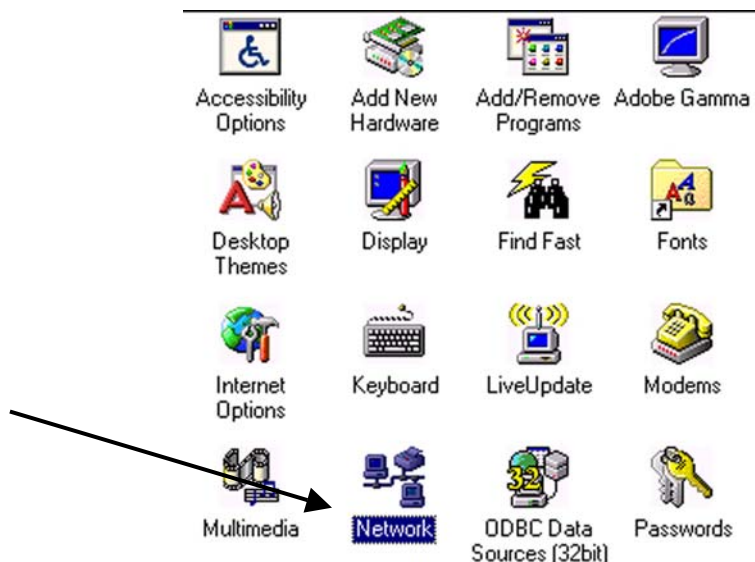
Installing TCP/IP for Windows®

Note: Complete this section only if you do not see TCP/IP listed in your Network Components when you begin configuring your computer. Once completed, return to “Configuring Your Computer.”

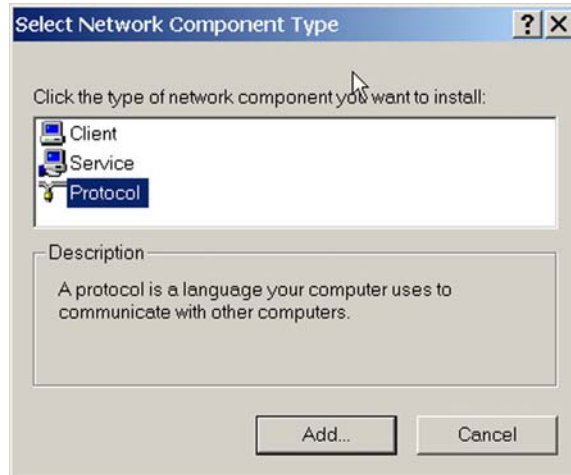
1. From the *Start* menu, open **Settings/Control Panel**.



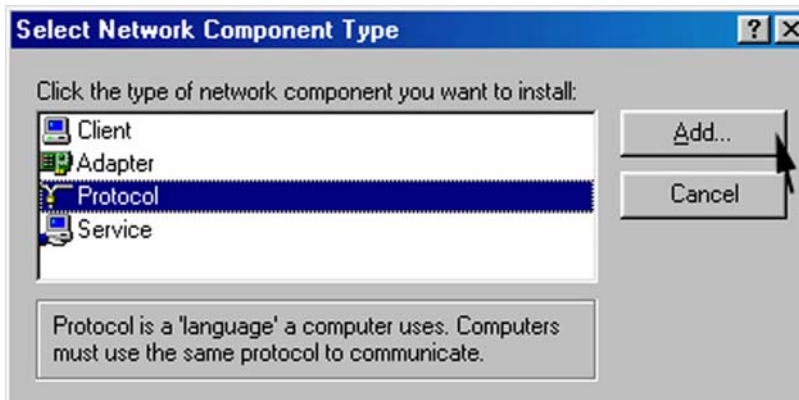
2. Double click the **Network** icon.



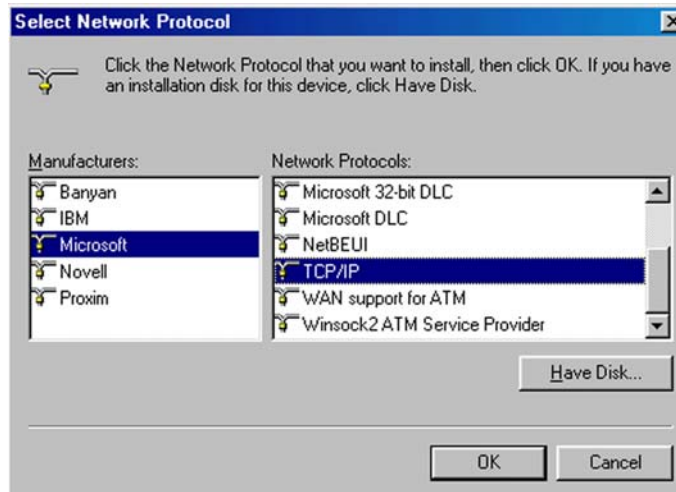
3. Click **Add**.



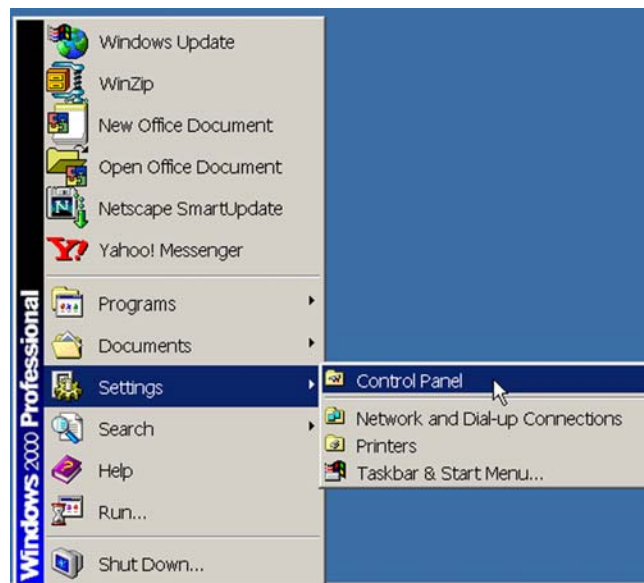
4. Select **Protocol** and click **Add**.



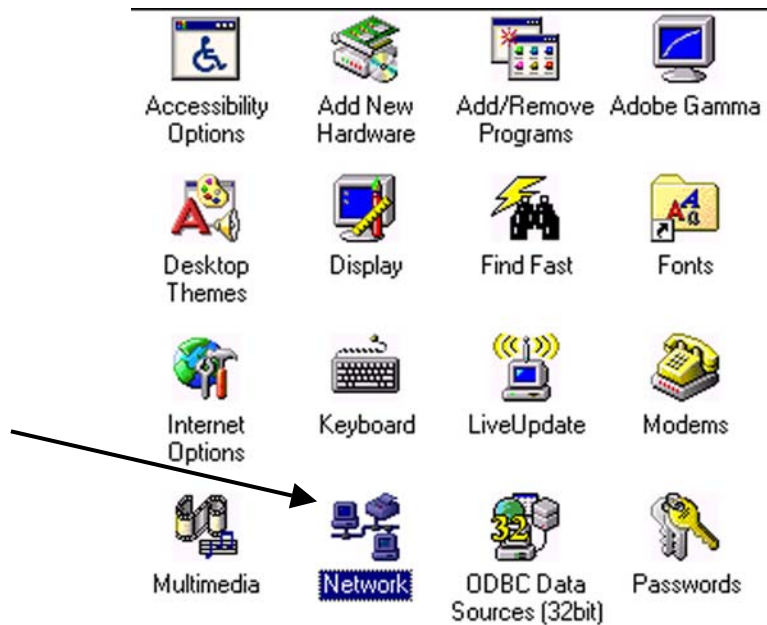
5. Select **Microsoft®** on the left half of the screen, and select **TCP/IP** on the right half of the screen. Click **OK**.



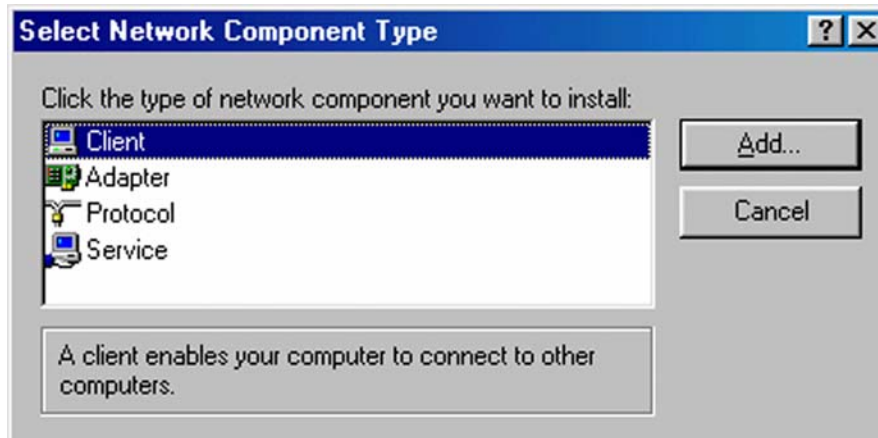
6. From the *Start* menu, open **Settings/Control Panel**.



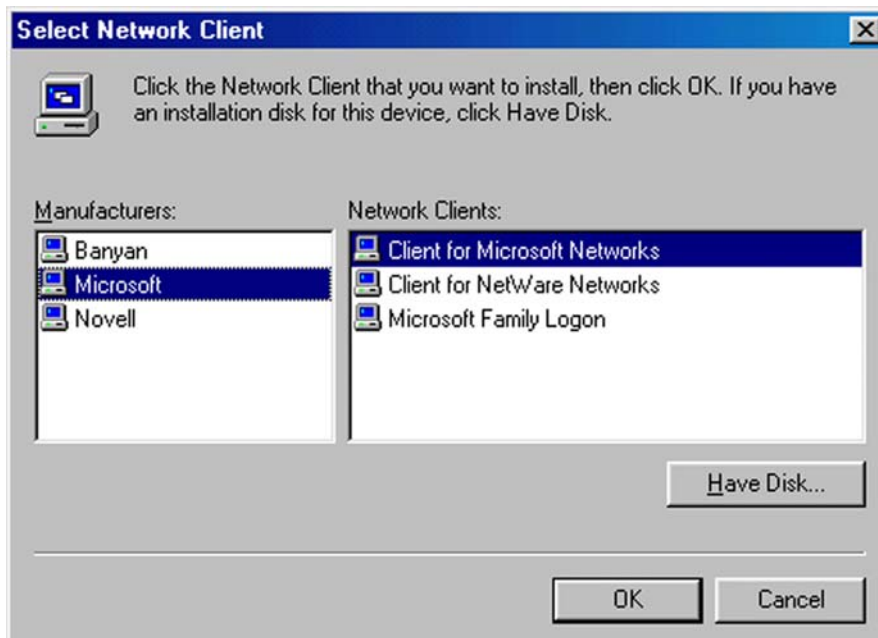
7. Double click the **Network** icon.



8. Choose **Client** on the Network Control panel window.



9. Select **Microsoft** on the left half of the screen, and select **Client for Microsoft Networks** on the right half of the screen. Click **OK**.



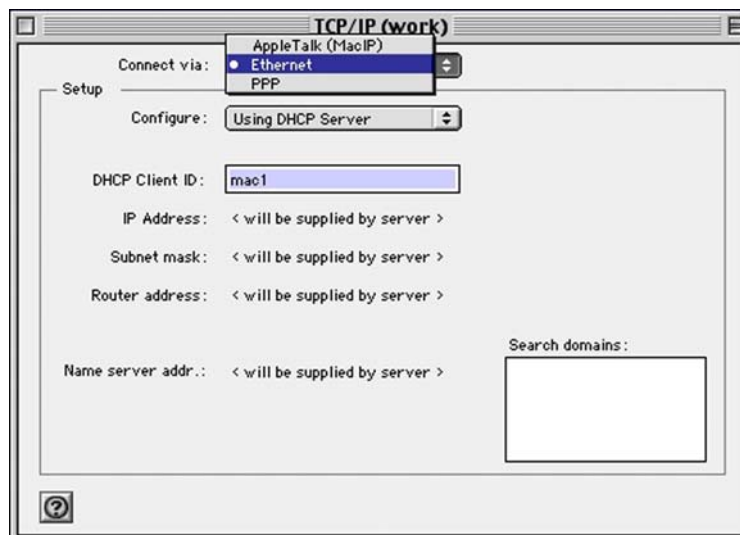
MAC Environment

Macintosh DHCP Configuration (Recommended)

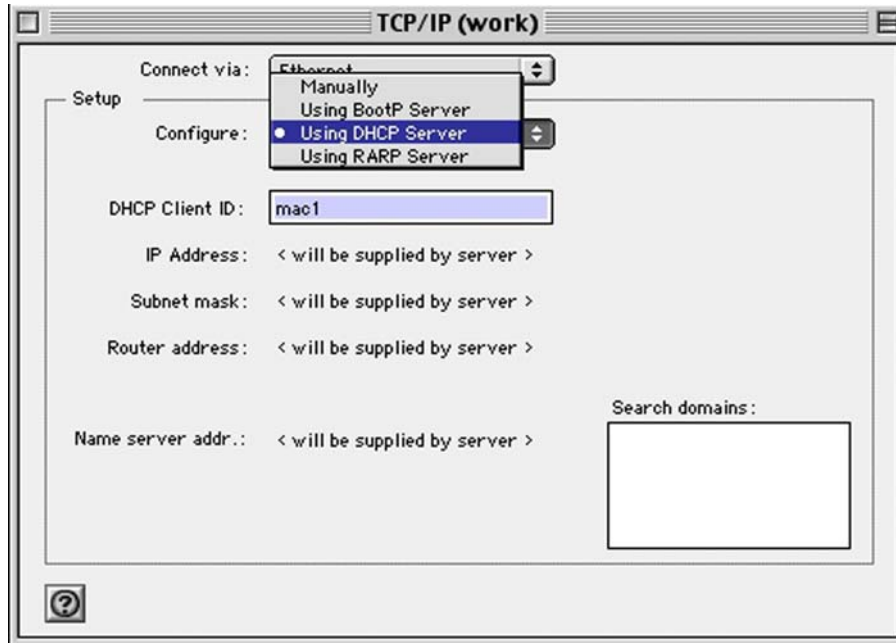
1. Single click the **Apple Menu** and move down to **Control Panels**. Highlight **TCP/IP** and single click once on your mouse.



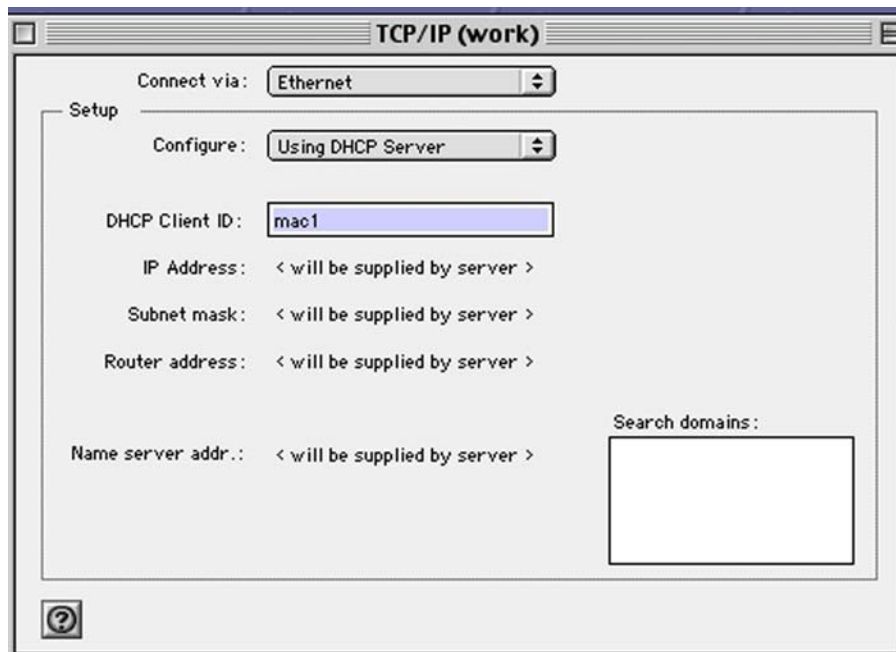
2. Select **Ethernet** form the **Connect via:** pull down menu.



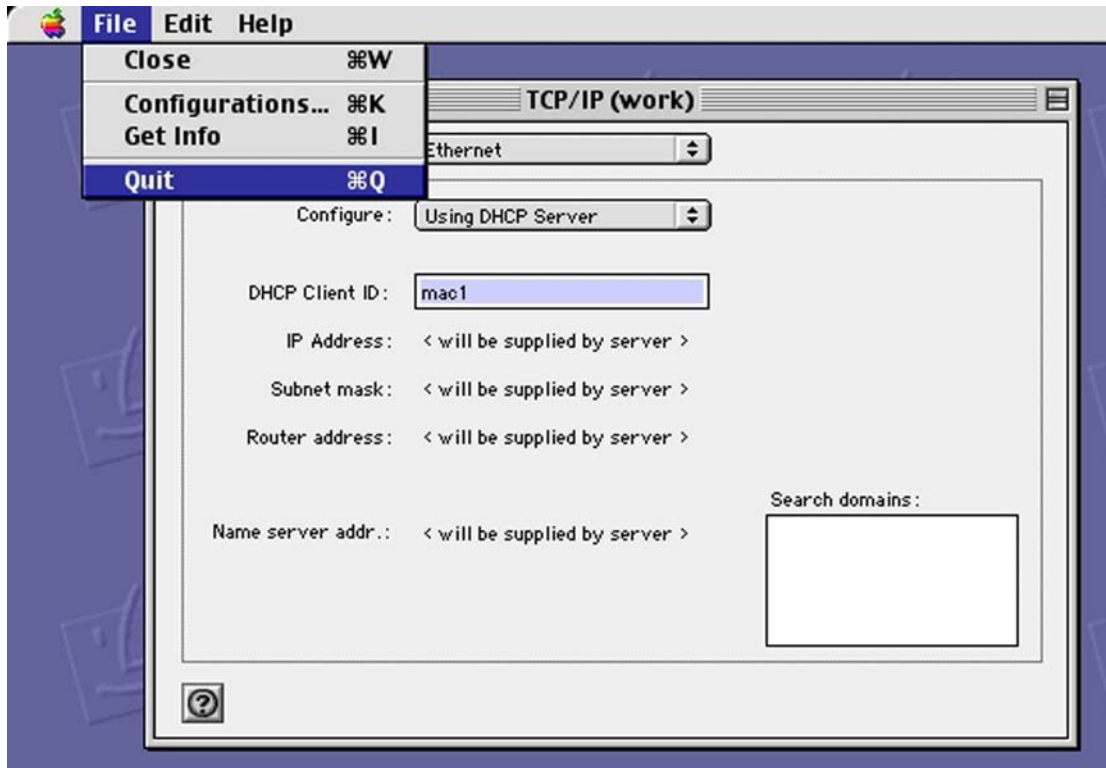
3. Select **Using DHCP Server** from the **Configure** pull down menu.



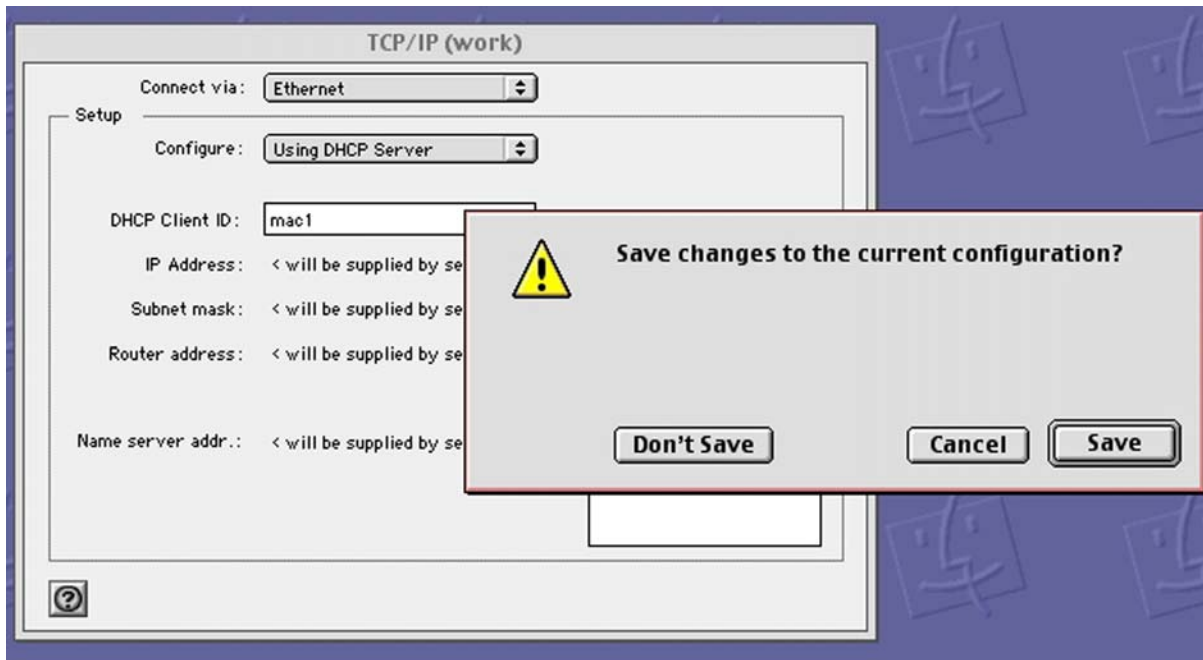
4. **Single click** in the **DHCP Client ID** and enter any name you choose for your Macintosh.



5. Single left click on **File**, then select **Quit**.



6. A warning box will appear asking you to save your settings. Select **Save**, then **restart** your Macintosh.



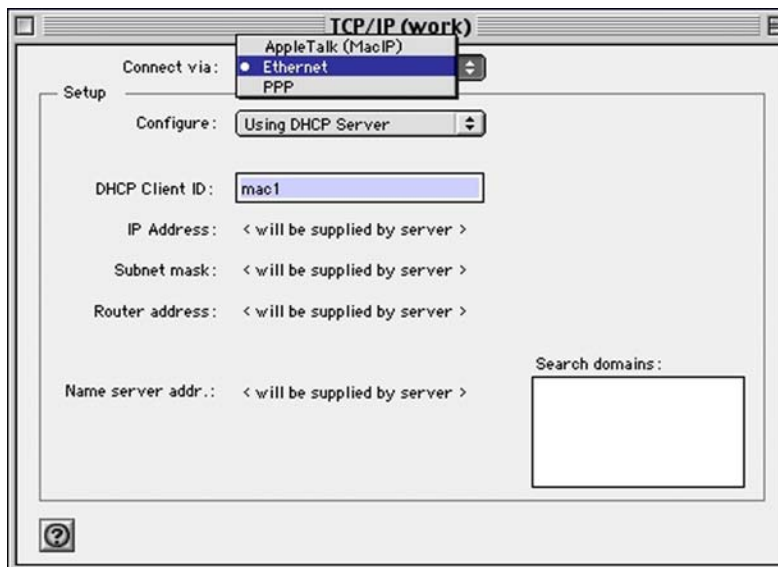
7. To check for the success of your setup, open a web browser and visit www.megapath.net. While there, you will find more information about additional services as well as setup and other support information.

Macintosh Static Configuration

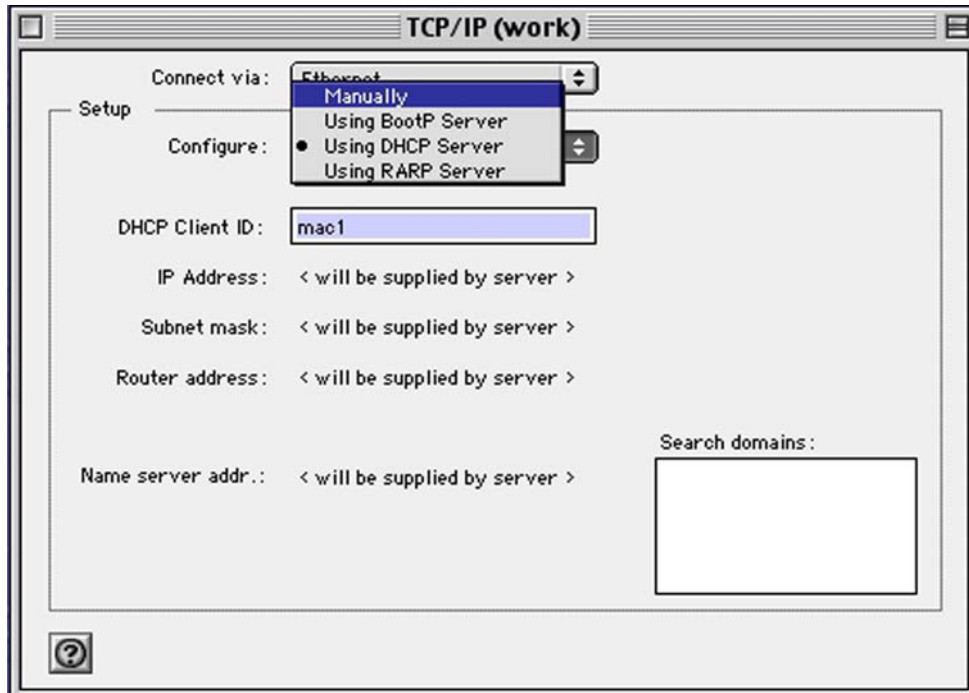
1. Single click the **Apple Menu** and move down to **Control Panels**. Highlight **TCP/IP** and **single click** once on your mouse.



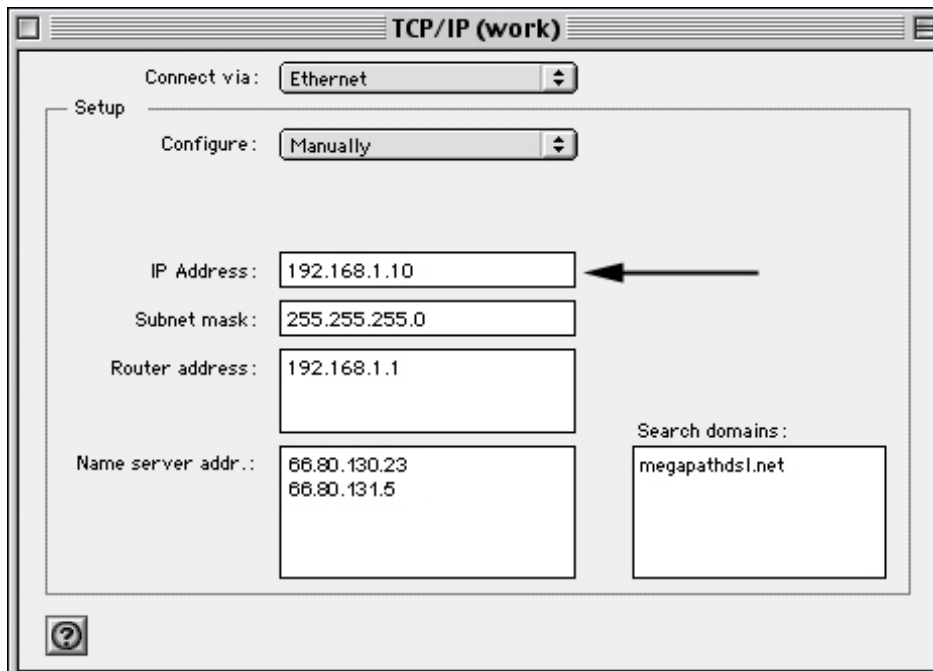
2. Select **Ethernet** from the **Configure** pull down menu.



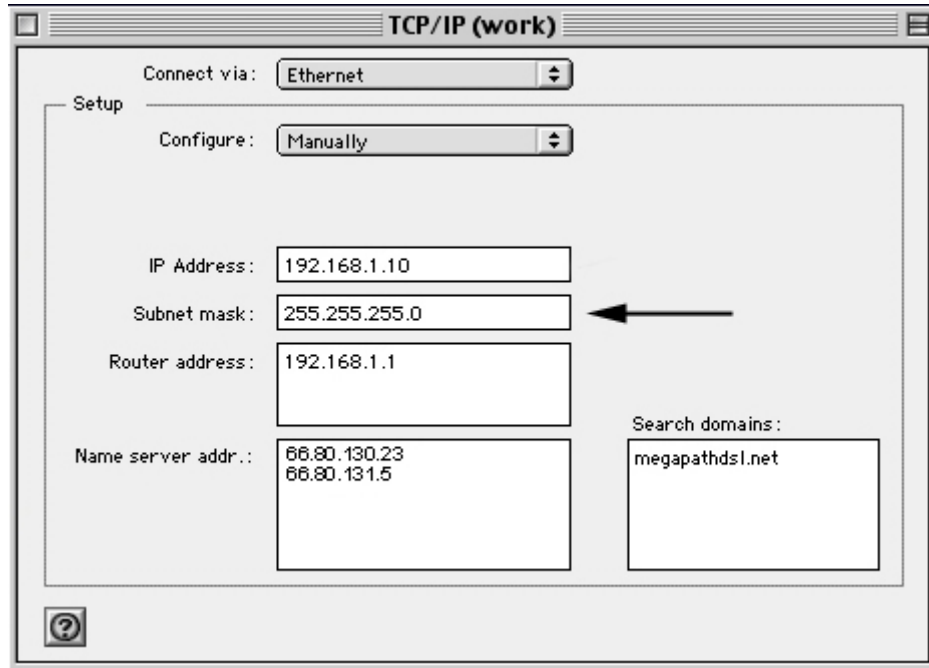
3. Select **Manually** from the **Configure** pull down menu.



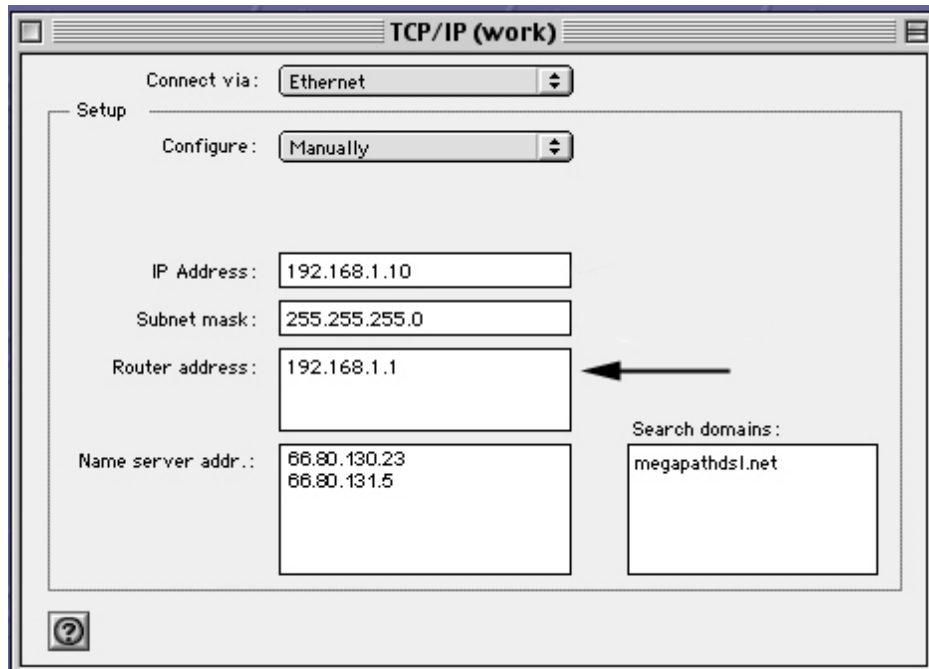
4. Single click in the **IP Address** text box and enter **192.168.1.2** as shown below.



5. Single click in the **Subnet mask** text box and enter your subnet mask. The Subnet Mask is always **255.255.255.0**.

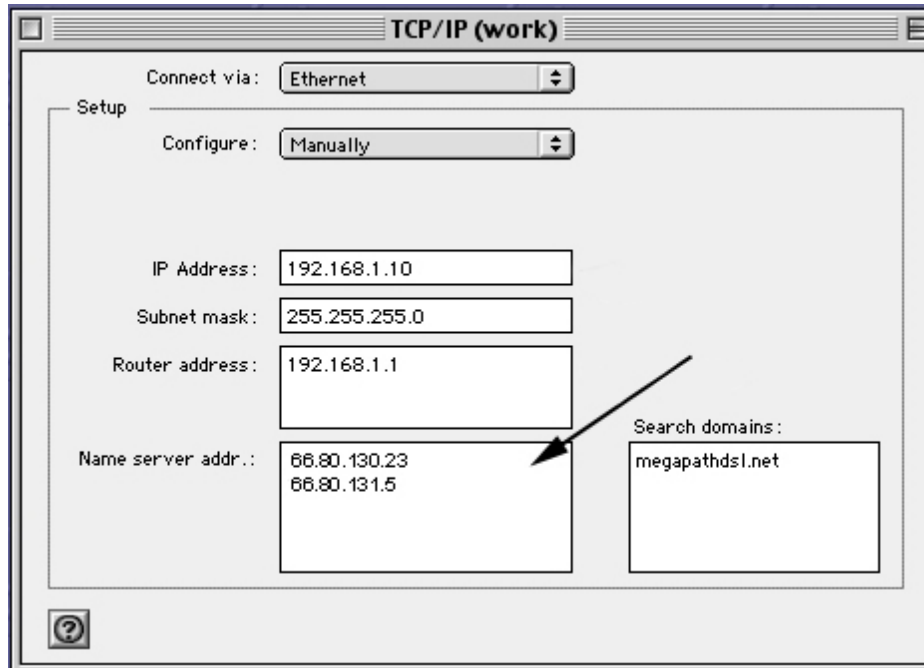


6. Single click in the **Router Address** text box and enter the **LAN IP** of the router. The LAN IP is always 192.168.1.1 as shown below.

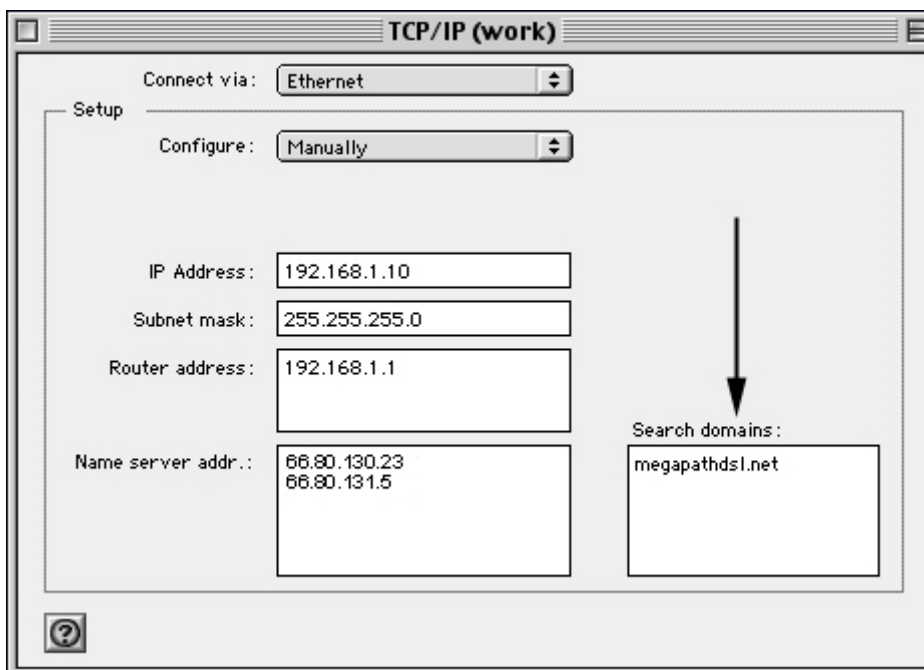


7. **Single click** in the **Name server addr** text box and enter the IP addresses for the domain name servers located where you live.

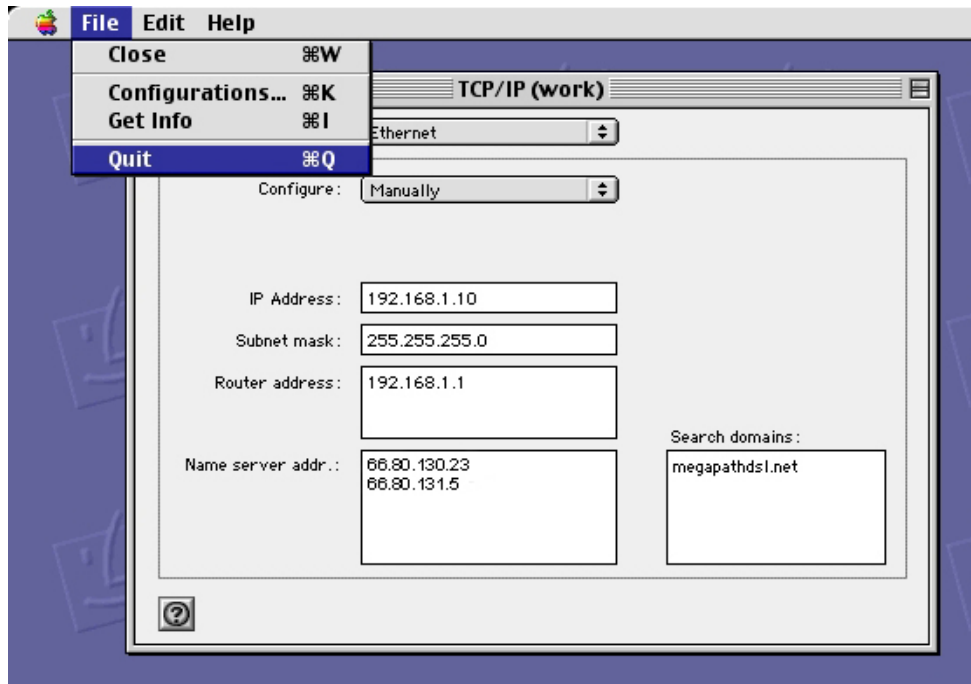
Enter **66.80.130.23** and **66.80.131.5**.



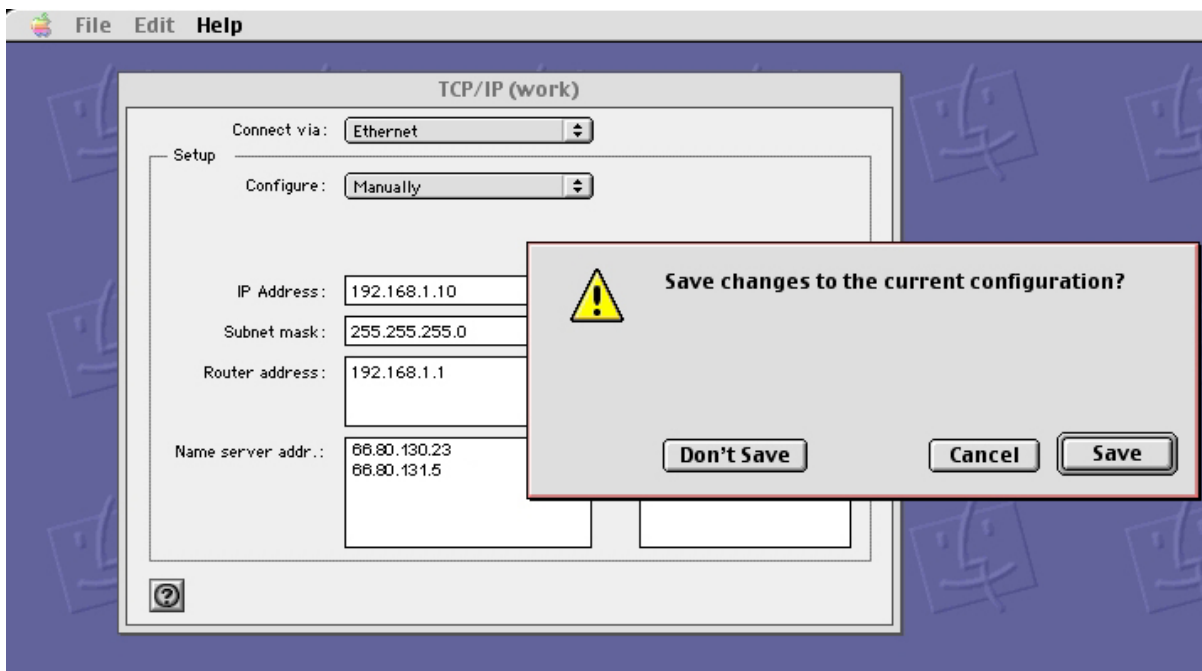
8. Single click in the **Search domains** text box and enter **megapathdsl.net**.



9. Single click on **File**, then select **Quit**.



10. A warning box will appear asking you to save your settings. Select **Save**, then restart your Macintosh.





Troubleshooting

- The **Power**, **Ethernet**, and **DSL** lights (labeled on the face of the router) should all turn solid green within two minutes after the unit is turned on.
- If the **Power** light does not turn solid green (it is also fine if it occasionally flashes amber), check your power cable. Are you connected to a live electrical outlet? Are all of the connections secure?
- If the **Ethernet** light does not turn solid green (it is also fine if it occasionally flashes amber), check your Ethernet connections. Are they secure? Is the PC turned on?
- If the **DSL** light does not turn solid green:
 - Verify that you are installing your DSL equipment AFTER the "Phone Company Commit Date" given to you during the provisioning of your DSL Internet Service.
 - Verify that the telephone line running from the rear of the router is connected directly into the telephone jack or into the side of the in-line filter labeled ADSL HPN.
 - Try another telephone jack in your home.
 - Turn off the router, reboot the computer, turn the router back on and wait for two minutes.
 - If none of these steps cause the DSL light to turn green, please contact **MegaPath Networks** at **1-877-611-6342**.

Warranty On Routers

We do not directly warrant the router or other so-called Customer Premise Equipment (CPE) that you purchase from us. Instead you do receive the original manufacturer's warranty on such equipment. If your router does fail, our Technical Support staff will be glad to assist you in getting it repaired or replaced, whether in or out of warranty.