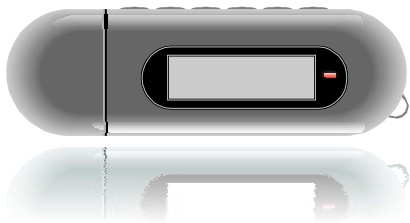


COBY®

MP-C855



**USB-Stick MP3 Player with
LCD Display and FM Radio**



INSTRUCTION MANUAL

Please read this manual carefully before operation.

PRECAUTIONS

	CAUTION WARNING: SHOCK HAZARD, DO NOT OPEN. AVIS: RISQUE DE CHOC ELECTRIQUE. NE PAS OUVRIIR	
CAUTION: TO REDUCE THE RISK OF FIRE AND ELECTRIC SHOCK, DO NOT REMOVE THE COVER (OR BACK) OF THE UNIT. REFER SERVICING ONLY TO QUALIFIED SERVICE PERSONNEL.		



The lightning flash with arrowhead symbol within an equilateral triangle is intended to alert the user to the presence of uninsulated "dangerous voltage" within the product's enclosure that may be of sufficient magnitude to constitute a risk of electric shock.



The exclamation point within an equilateral triangle is intended to alert the user to the presence of important operation and servicing instructions in the literature accompanying the appliance.

For Customer Use:

Enter below the serial number that is located on the unit. Retain this information for future reference.

Model No. _____ MP-C855 _____

Serial No. _____

WARNING:

To prevent fire or shock hazard, do not expose this device to rain or moisture. Dangerous high voltage is present inside the enclosure. Do not open the cabinet.

CAUTION:

To prevent electric shock, match wide blade of plug to wide slot of outlet and fully insert.

WARNING:

Handling the cords on this product will expose you to lead, a chemical known to the State of California to cause cancer, and birth defects or other reproductive harm. **Wash hands after handling.**



For recycling or disposal information about this product, please contact your local authorities or the Electronics Industries Alliance: www.eiae.org.

PRECAUTIONS

PROTECT YOUR HEARING:

Hearing experts advise against the constant use of personal stereos played at high volume. Constant exposure to high volumes can lead to hearing loss. If you should experience ringing in the ears or hearing loss, discontinue use and seek medical advice.

NOTICE:

This product is protected by certain intellectual property rights of Microsoft. Use or distribution of such technology outside of this product is prohibited without a license from Microsoft.

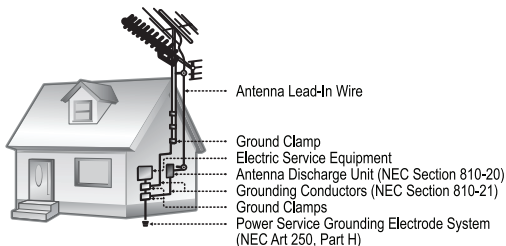
IMPORTANT SAFETY INSTRUCTIONS

- 1. Read Instructions:** All the safety and operating instructions should be read before the product is operated.
- 2. Retain Instructions:** The safety and operating instructions should be retained for future reference.
- 3. Heed Warnings:** All warnings on the product and in the operating instructions should be adhered to.
- 4. Follow Instructions:** All operating and usage instructions should be followed.
- 5. Cleaning:** Unplug this product from the wall outlet before cleaning. Do not use liquid cleaners or aerosol cleaners. Use a damp cloth for cleaning.
- 6. Attachments:** Use only attachments recommended by the manufacturer. Use of other attachments may be hazardous.
- 7. Water and Moisture:** Do not use this product near water (e.g., near a bath tub, washbowl, kitchen sink, laundry tub, in wet basements, or near a swimming pool and the like).
- 8. Accessories:** Do not place this product on an unstable cart, stand, tripod, bracket, or table. Use only with carts, stands, tripods, brackets, or tables recommended by the manufacturer or sold with the product. Any mounting of the product should follow the manufacturer's instructions and should use a mounting accessory recommended by the manufacturer.
- 9.** A product and cart combination should be moved with care. Quick stops, excessive force, and uneven surfaces may cause the product and cart combination to overturn.
- 10. Ventilation:** Slots and openings in the cabinet are provided for ventilation to ensure reliable operation of the product and to protect it from overheating. These openings should never be blocked by placing the product on a bed, sofa, rug, or other similar surface. This product should not be placed in a built-in installation such as a bookcase or rack unless proper ventilation is provided or the manufacturer instructions have been adhered to.
- 11. Power Sources:** This product should be operated only from the type of power source indicated on the rating label. If you are not sure of the type of power supply to your home, consult your product dealer or local power company. For products intended to operate from battery power or other sources, refer to the operating instructions.
- 12. Grounding or Polarization:** This product may be equipped with a polarized alternating-current line plug that has one blade wider than the other. This plug will only fit into the power outlet in one direction. This is a safety feature. If you are unable to insert the plug fully into the outlet, try reversing the direction of the plug. If the plug should still fail to fit, contact an electrician to replace the obsolete outlet. Do not defeat the safety purpose of the polarized plug.



IMPORTANT SAFETY INSTRUCTIONS

13. **Power-Cord Protection:** Power supply cords should be routed so that they are not likely to be walked on or pinched by items placed upon or against them, paying particular attention to cords at plugs, convenience receptacles, and at the point which they exit from the product.
14. **Protective Attachment Plug:** The product may be equipped with an attachment plug with overload protection. This is a safety feature. See the operating instructions for replacement or directions to reset the protective device. If replacement of the plug is required, be sure the service technician has used a replacement plug that has the same overload protection as the original plug as specified by the manufacturer.
15. **Outdoor Antenna Grounding:** If an outside antenna is connected to the product, be sure the antenna system is grounded so as to provide some protection against voltage surges and built-up static charges. Article 810 of the National Electrical Code, ANS/NFPA 70 provides information with regard to proper grounding of the mast and supporting structure, grounding of the lead-in wire to an antenna-discharge unit, size of grounding conductors, location of antenna-discharge unit, connection to grounding electrodes, and requirements for the grounding electrode (see figure).



16. **Lightning:** For added protection for this product, unplug it from the wall outlet and disconnect the antenna or cable system during a lightning storm or when it is left unattended and unused for long periods of time. This will prevent damage to the product due to lightning or power-line surges.
17. **Power Lines:** An outside antenna system should not be located in the vicinity of overhead power lines or other electric light or power circuits, or where it can fall into such power lines or circuits. When installing an outside antenna system, extreme care should be taken to keep from touching such power lines or circuits, as contact with them might be fatal.
18. **Overloading:** Do not overload wall outlets, extension cords, or integral convenience receptacles as this can result in a risk of fire or electric shock.

IMPORTANT SAFETY INSTRUCTIONS

19. **Object and Liquid Entry:** Never push objects of any kind into this product through openings as they may touch dangerous voltage points or shout-out parts that could result in a fire or electric shock. Never spill liquid of any kind on the product.
20. **Servicing:** Do not attempt to service this product yourself as opening or removing covers may expose you to dangerous voltage or other hazards. Refer all servicing to qualified service personnel.
21. **Damage Requiring Service:** Unplug this product from the wall outlet and refer servicing to qualified service personnel under the following conditions: a) when the power-supply or plug is damaged; b) if liquid has been spilled or if objects have fallen into the product; c) if the product has been exposed to rain or water; d) if the product does not operate normally by following the operating instructions. Adjust only those controls that are covered by the operating instructions as improper adjustment of other controls may result in damage and will often require extensive work by a qualified technician to restore the product to its normal operation; e) if the product has been dropped or damaged in any way; f) when the product exhibits a distinct change in performance—this indicates a need for service.
22. **Replacement Parts:** When replacement parts are required, be sure that your service technician has used replacement parts specified by the manufacturer or have the same characteristics as the original part. Unauthorized substitutions may result in fire, electric shock, or other hazards.
23. **Safety Check:** Upon completion of any service or repairs to this product, ask the service technician to perform safety checks to ensure that the product is in proper operating condition.
24. **Wall or Ceiling Mounting:** The product should be mounted to a wall or ceiling only as recommended by the manufacturer.
25. **Heat:** The product should be situated away from heat sources such as radiators, heat registers, stoves, or other products (including amplifiers) that produce heat.

TABLE OF CONTENTS

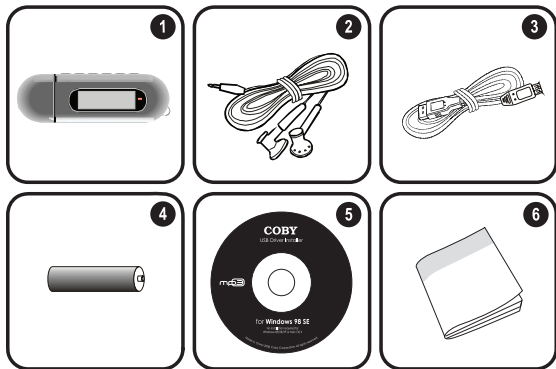
PRECAUTIONS	2
IMPORTANT SAFETY INSTRUCTIONS	4
TABLE OF CONTENTS	7
PACKAGE CONTENTS	9
FEATURES	10
GETTING STARTED	11
MP-C855 at a Glance.....	11
Connecting Headphones	13
Connecting Power	13
Loading a Battery.....	13
USB Power.....	13
Using the MP-C855 Controls	14
Power On/Off.....	14
Hold Switch	14
Reset Function.....	14
Navigating the Menu Interface	14
Main Menu	15
PLAY MUSIC	16
Play Music Controls.....	16
Repeat A-B Mode	17
VOICE	18
Voice Controls	18
Repeat A-B Mode	19
RECORD	20
Record Controls.....	20
FM TUNER	21
FM Tuner Controls	21
Automatically Saving Preset Stations	21
Manually Saving Preset Stations	22
Deleting Preset Stations	22
FM Tuner Menu.....	23
FM Recording Controls	23
SETTING	24
FOLDER	26
Folder Controls	26

TABLE OF CONTENTS

USB CONNECTIONS	27
Minimum PC Requirements	27
USB Driver Installation (Windows 98SE Only).....	27
USB Mode (MSC/MTP)	28
Connecting to a Computer	30
USB-MTP Mode.....	30
USB-MSC Mode	30
Transferring Files.....	31
USB-MTP Mode.....	31
USB-MSC Mode	32
Disconnecting from a Computer	33
USB-MTP Mode.....	33
USB-MSC Mode	33
Build Music Library (USB-MSC Mode Only).....	33
WINDOWS MEDIA PLAYER 10	34
Music File Transfers	34
Creating Playlists.....	36
Automatic Windows Media Playlist Synchronization	38
FIRMWARE UPGRADES	40
Upgrading the Firmware.....	40
ABOUT MP3/WMA MUSIC FILES	41
TROUBLESHOOTING	42
SPECIFICATIONS.....	44

PACKAGE CONTENTS

Please make sure that the items listed below are included in the package. Should an item be missing, please contact the local retailer from which you purchased this product.



1. MP-C855
2. Stereo Earphones
3. USB Extension Cable
4. 1 x "AAA" Battery
5. Installation CD
6. Instruction Booklet

FEATURES

- + 512MB Integrated Flash Memory
- + High-Contrast LCD Display with Backlight
- + Plays MP3 and WMA Digital Music Files
- + Plays Digital Music from most online stores and subscription services*
- + ID3 and LRC support for song and synchronized lyric information display
- + Integrated FM Radio and Recorder
- + Integrated Microphone for Digital Voice Recording
- + Mobile Data Storage Function
- + USB 2.0 for Ultra-Fast File Transfers (up to 40x faster than USB 1.0)

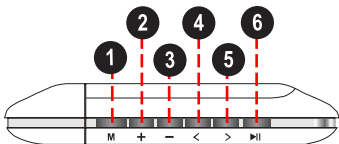
* Music Service must support Windows Media DRM (WMDRM). WMDRM10 requires Windows XP and Windows Media Player 10 or newer.

GETTING STARTED

MP-C855 at a Glance

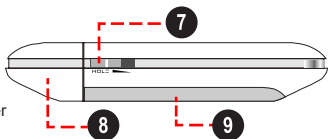
Top View

1. MENU button 
2. Volume + 
3. Volume - 
4. Previous/Reverse 
5. Next/Forward 
6. Play/Pause/Stop 



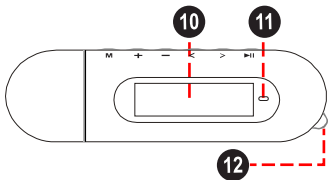
Bottom View

7. HOLD Switch
8. USB Cap
9. Battery Compartment Cover



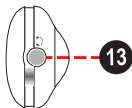
Front View

10. LCD Display
11. Integrated Microphone
12. Neckstrap Hook



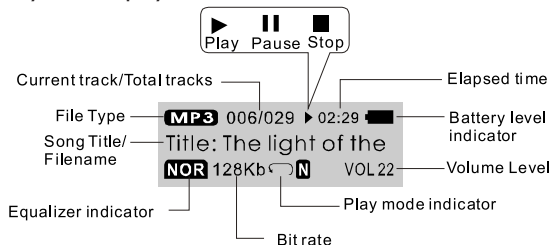
Right View

13. Headphone Out Jack

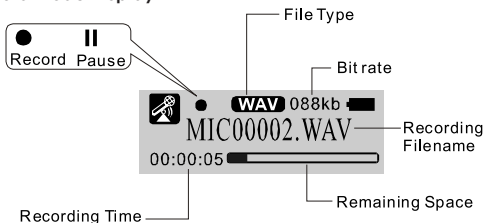


GETTING STARTED

Play Mode Display



Record Mode Display

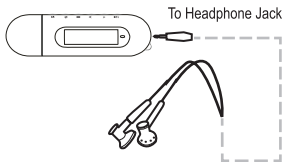


GETTING STARTED

Connecting Headphones

Connect headphones/earphones to the Headphone Out jack for private listening.

- + Lower the volume level before connecting headphones, then gradually increase the volume for comfortable listening.
- + Hearing experts advise against the constant use of personal stereos played at high volume.
- + Constant high-volume use can lead to hearing loss. If you experience ringing in your ears or hearing loss, discontinue use immediately and seek medical advice.

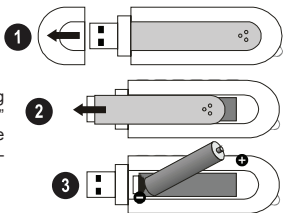


Connecting Power

The MP-C855 operates on 1 x "AAA" battery for music playback.

Loading a Battery

1. Remove the USB Cap.
2. Remove the Battery Cover.
3. Insert 1 x "AAA" battery, taking care to match the "+" and "-" polarities of the battery with the markings inside the battery compartment.
4. Replace the Battery Cover.





USB Power

When the MP-C855 is connected to a computer's powered USB port, it will draw power over the USB connection.

GETTING STARTED

Using the MP-C855 Controls

Power On/Off

- + To turn your player on, press . The LED indicator will light.
- + To turn your player off, hold  for at least 3 seconds. The LED indicator will darken.

Hold Switch

The Hold feature locks (disables) your player's controls to prevent accidental key presses when it is in your pocket or bag.

- + To lock the player's controls, slide the HOLD switch to the right in the direction of the arrow. A Lock icon will be displayed on the screen.



- + To unlock the player's controls, slide the HOLD switch to the left.





Reset Function

You may reset your player if it should freeze or otherwise behave abnormally.

1. Disconnect your player if it is connected to a computer.
2. Remove the battery from the player. Wait 10 seconds, and then replace the battery.
3. Power on your player. Your player has now been reset.

Navigating the Menu Interface

It is easy to use the MP-C855 controls to select menu options, items, and files on your player.

- + To move the selection cursor (highlight), press the arrow keys. To move quickly in any direction, press and hold the arrow keys.
 - ◇ To highlight the previous item to the left (or up), press .
 - ◇ To highlight the next item to the right (or down), press .
- + To confirm and enter the current selection, press .
- + To return to the previous screen, press .

GETTING STARTED

Main Menu

The Main Menu gives you access to the different function modes of your player.

- + To enter the Main Menu, press and hold **M**. To exit the Main Menu, press and hold **M**.
- + To select a function mode in the Main Menu, press **<** or **>** to highlight the mode, and then press **▶** to confirm.



Play Music

Play your digital MP3 or WMA music files.



Voice

Play your digital voice recordings.



Record

Record from the integrated microphone.



FM Tuner

Listen to FM radio broadcasts.
Record FM radio broadcasts.



Setting

Set your player's internal options.



Folder

Play, view, or delete files from your player.

PLAY MUSIC

Enter PLAY MUSIC mode from the Main Menu to play digital MP3 or WMA music files.



PLAY MUSIC mode will play all compatible audio files on your player, regardless of directory.

Play Music Controls

Use the following controls during music playback.

Key	Function
Press	Start/Resume track playback. During playback, press to pause playback.
Hold (2 seconds)	Stop track playback completely.
Press	Play the next track.
Hold	Fast-forward through the current track.
Press	Play the previous track.
Hold	Reverse through the current track.
Press	Decrease the volume level.
Press	Increase the volume level.
Press	Start Repeat A-B Mode.
Hold	Return to Main Menu.



For more information about how to get music onto your player, please refer to the section "Getting Started > Connecting to a Computer > Transferring Music to Your MP-C855".

For more information about digital MP3 and WMA music files, please refer to the section "About MP3/WMA Music Files".

PLAY MUSIC

Repeat A-B Mode

Set a segment of a music track to repeat in a continuous loop. During playback:

- ✦ To set the starting point "A" of the loop, press **M**.
- ✦ To set the end point "B" of the loop, press **M** again. The loop will now play from point "A" to point "B".
- ✦ To resume normal playback, press **M** again.

VOICE

Enter VOICE mode from the Main Menu to play your recorded files (Voice or FM Tuner). If no recordings have been made yet, the display will read "No Files".



- ✦ The first 3 letters of voice recording files are "MIC".
- ✦ The first 2 letters of FM Tuner recording files are "FM".



VOICE mode will play all compatible audio recording files on your player, regardless of directory.

Voice Controls

Use the following controls in VOICE mode.

Key	Function
Press	Start/Resume track playback. During playback, press to pause playback.
Hold (2 seconds)	Stop track playback completely.
Press	Play the next track.
Hold	Fast-forward through the current track.
Press	Play the previous track.
Hold	Reverse through the current track.
Press	Decrease the volume level.
Press	Increase the volume level.
Press	Start Repeat A-B Mode.
Hold	Return to Main Menu.

Repeat A-B Mode

Set a segment of a music track to repeat in a continuous loop. During playback:

- ✦ To set the starting point "A" of the loop, press **M**.
- ✦ To set the end point "B" of the loop, press **M** again. The loop will now play from point "A" to point "B".
- ✦ To resume normal playback, press **M** again.

RECORD

Enter RECORD mode from the Main Menu to record from the integrated microphone (voice).



The MP-C855 can also record from the FM Tuner. Refer to the FM Tuner section for details.

Record Controls

Use the following controls in RECORD mode. Recording will start immediately when RECORD is selected from the Main Menu.

Key	Function
Press	Start/Resume recording. During recording, press to pause recording.
Press	Stop and save the recording. The player will enter VOICE mode automatically to play the recorded file.

- + Recordings are saved to the folder "MICIN.DIR".
- + Recorded voice files are named "MICXXXXX.WAV" where XXXXX corresponds to the numerical sequence in which the recording was made (numbering starts from 00001).

FM TUNER

Enter FM TUNER mode from the Main Menu to listen to or record FM radio broadcasts.



Earphones or headphones must be connected to the headphone jack for radio operation (the earphone cord is used as an FM antenna).

FM Tuner Controls

Use the following controls in FM TUNER mode.

Key	Function
Press	Switch between Preset and Manual tuning.
Press	Preset Tuning: Tune to a higher preset station. Manual Tuning: Tune to a higher frequency.
Hold	Manual Tuning: Auto-seek the next highest frequency.
Press	Preset Tuning: Tune to a lower preset station. Manual Tuning: Tune to a lower frequency.
Hold	Manual Tuning: Auto-seek the next lowest frequency.
Press	Decrease the volume level.
Press	Increase the volume level.
Hold	Enter the FM Tuner Menu.

Automatically Saving Preset Stations

To automatically scan and save all available broadcast frequencies to Preset Station memory:

- + Enter the FM Tuner menu (press and hold).
- + Select and enter "Auto Scan".



There are 30 available Preset Stations. Auto Scan will overwrite any previously stored Preset Stations.

FM TUNER

Manually Saving Preset Stations

- + Manually tune to the station you would like to save as a Preset Station (e.g., "92.7").
- + Enter the FM Tuner menu (press and hold **M**).
- + Select and enter "Save Station". The display will flash "Save?"
- + While the display is flashing "Save?", press **<** or **>** to select a Preset Station number (e.g., "03").
- + Press **▶** to confirm and save. (The station "92.7" has now been saved as Preset Station "03".)



Press **M** to cancel the save process.

Deleting Preset Stations

- + Enter the FM Tuner menu (press and hold **M**).
- + Select and enter "Delete Station". The display will flash "Delete?"
- + While the display is flashing "Delete?", press **<** or **>** to select a Preset Station number to delete (e.g., "03").
- + Press **▶** to confirm and delete. (Preset Station "03" will be deleted.)



Press **M** to cancel the delete process.

FM TUNER

FM Tuner Menu



To enter the FM Tuner menu, press and hold **M** while the player is in FM Tuner mode.

Item	Description
Play Music	Enter PLAY MUSIC Mode. (Select this to exit FM Tuner menu and return to Main Menu).
Voice	Enter VOICE Mode.
Save Station	Save a Preset Station.
Delete Station	Delete a Preset Station
Auto Scan	Automatically scan and save all available broadcast frequencies to Preset Stations.
Record	Start recording the current FM station.

FM Recording Controls

Make digital recordings of FM radio broadcasts.

Use the following controls in RECORD mode. Recording will start immediately when RECORD is selected from the FM Tuner Menu.

Key	Function
Press 	Start/Resume recording. During recording, press  to pause recording.
Press M	Stop and save the recording. The player will enter VOICE mode automatically to play the recorded file.

- + Recordings are saved to the folder "FMIN.DIR".
- + Recorded voice files are named "FMXXXXX.WAV" where XXXXX corresponds to the numerical sequence in which the recording was made (numbering starts from 00001).

SETTING

Enter SETTING mode from the Main Menu to change your player's internal option settings.



The Setting Menu contains 11 options.

- ✦ To select an option, press **<** or **>**. To confirm and enter, press **▶**.
- ✦ To exit the Setting Menu, press **M**.

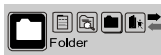
Item	Description
Equalizer	Set a digital equalizer preset. The options are Normal, Pop, Rock, Classic, Jazz, and Bass.
Repeat Mode	Set a Repeat Mode option. The options are Normal, Repeat One, Repeat All, Shuffle Repeat, Dir Normal, Dir All Repeat, Dir Shuffle Repeat.
Contrast	Set the contrast level of the display.
Backlight	Set the backlight option to change the duration of time (in seconds) that the backlight will remain on after a key press. A setting of "Off" will disable the backlight completely. A setting of "On" will keep the backlight on continuously.
Backlight Color	Set the color of the backlight. A setting of "Color All" will change the backlight color with each key press.
Power Set	Set the Power Set option to change the duration of time (in minutes) that the player will remain on when it is idle. A setting of "Disable" will turn this power saving feature off.
Record Set	Set the Recording Quality level for Voice or FM recordings. The options are 32Kbps (lowest quality), 44Kbps, 64Kbps, and 88Kbps (highest quality). Higher quality recordings will take up more memory than lower quality recordings.
Language	Set the Language that the menus appear in.
Version	View your player's firmware information.
Info	View your player's memory information.

SETTING

Item	Description
USB Mode	<p>Set the USB mode to MSC or MTP. For more information on USB modes, see the "Connecting to a Computer" section of this manual.</p> <p>✦ While the player is connected to a computer, you can change the USB mode by pressing and holding M.</p>

FOLDER

Enter FOLDER mode to view, play, or delete files on your player.



You can also connect your player to a computer to easily manage your file library.








The mode that the player is in upon entering FOLDER mode will determine which types of files or folders will be displayed (i.e., Play Music or Voice Mode).

Folder Controls

A directory tree will be displayed on-screen upon entering FOLDER mode from the Main Menu.

- + If you were previously in Play Music mode, only music files will be displayed.
- + If you were previously in Voice mode, only voice recording files will be displayed.

Use the following controls in FOLDER mode.

Key	Function
Press 	Select the next file or folder (down).
Press 	Select the previous file or folder (up).
Press 	<p>If a folder is selected, the folder's contents will be displayed.</p> <p>If a file is selected, an option box will be displayed:</p> <ul style="list-style-type: none">+ Select "Play Now" to play the selected file.+ Select "Delete?" to delete the selected file, and then select "Yes" to confirm the deletion. <p>If the  icon is selected, the previous folder's contents will be displayed.</p>
Press 	Return to Main Menu.

USB CONNECTIONS

Minimum PC Requirements

You can connect the MP-C855 to a computer with a USB port to transfer files to your player or to manage the files on your player. The minimum requirements listed below will allow you to perform basic file management functions; advanced features will require a faster PC and Windows configuration.

- + MS Windows 98SE (Service Pack 1) or ME [USB-MSC];
MS Windows 2000 (Service Pack 3 or above) with Windows Media Player 9 [USB-MSC];
MS Windows XP (Service Pack 1 or above) with Windows Media Player 10 or newer [USB-MTP]
- + Pentium 166 MMX processor (or equivalent)
- + 96MB RAM
- + 50MB of available hard drive space
- + Internet connection
- + Video Display card
- + Sound card
- + USB 1.0 port (a USB 2.0 Hi-Speed port will enable file transfers up to 40 times faster).

New versions of Windows Media Player may be downloaded from the Microsoft website at www.microsoft.com.

USB Driver Installation (Windows 98SE Only)

It is not necessary to install the USB driver if your computer is running Microsoft Windows ME/2000/XP or newer, or Macintosh OS X. Computers running these operating systems will recognize your player automatically when connected.

If your computer is running Windows 98 SE:

1. Insert the Installation CD into your computer's CD or DVD drive. Make sure to place the mini-CD in the center, recessed well of the drive tray.
2. Navigate to MY COMPUTER and double-click on the CD/DVD drive icon (usually "D:").
3. Double-click on the folder "Win98 USB Drivers" and then on the folder "english".

USB CONNECTIONS

4. Double-click on the SETUP icon (SETUP.EXE) to start the USB driver installation program.
5. Follow the on-screen instructions to complete the installation and then restart your computer.



Mini-CDs should only be used in normal tray-loading CD/DVD drives. Mini-CDs may be used in slot-loading drives with the proper adapter; please contact your computer or drive manufacturer for more information.

USB Mode (MSC/MTP)

The MP-C855 can use either **USB-Mass Storage Class (USB-MSC)** mode or **USB-Media Transfer Protocol (USB-MTP)** mode to connect to your computer. Both USB modes allow for simple, high-speed transfers of files between your player and a computer, and allow you to use your computer's operating system to view, manage, and transfer files to your player from your computer

There are, however, a few differences to take note of.

USB-MSC	USB-MTP
Simple plug-and-play support for all major operating systems (Microsoft Windows 98SE/ME/2000, Macintosh OS X, Linux)	Simple plug-and-play support for Microsoft Windows XP with Service Pack 1 and Windows Media Player 10 (or newer)
Supports Windows Media DRM 9	Supports Windows Media DRM 9 (WMDRM9) Supports Windows Media DRM 10 (WMDRM10) -- requires Windows XP and Windows Media Player 10 or newer
--	Windows Media Playlist support
USB 2.0 Hi-Speed file transfers	USB 2.0 Hi-Speed file transfers
Database rebuild required after each USB connection.	Database rebuild not required.

USB CONNECTIONS

In general, USB-MSC mode enjoys wider compatibility with different computers and operating systems, while USB-MTP mode enables advanced features (e.g., playlist synchronization), but requires Windows XP SP1 and Windows Media Player 10 or newer.



To transfer and synchronize encrypted WMDRM10 files, USB-MTP mode (in conjunction with Windows XP and Windows Media Player 10) is required. Most online music stores and subscription services use WMDRM10 files. Please refer to the documentation of either Microsoft or the store from which you purchased your music for more information and support.*

WMDRM9 may be used for music purchases, only. WMDRM10 is necessary for subscription-based services.

Content owners use Windows Media digital rights management technology (WMDRM) to protect their intellectual property, including copyrights. This device uses WMDRM software to access WMDRM-protected content. If the WMDRM software fails to protect the content, content owners may ask Microsoft to revoke the software's ability to use WMDRM to play or copy protected content. Revocation does not affect unprotected content. When you download licenses for protected content, you agree that Microsoft may include a revocation list with the licenses. Content owners may require you to upgrade WMDRM to access their content. If you decline an upgrade, you will not be able to access content that requires the upgrade.

*** A few examples of online music stores that support WMDRM are:** AOL Music Now, Napster To Go, URGE, Virgin Digital, and Y! Music (Yahoo! Music).

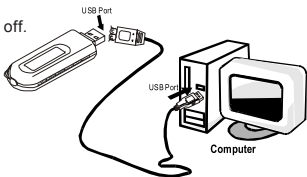


Music purchased and downloaded from the iTunes music store are AAC files encrypted with Apple Fairplay DRM. The MP-C855 does not support AAC file playback. Please use only MP3, WMA, or WAV music files with your player.

USB CONNECTIONS

Connecting to a Computer

1. Make sure the player is turned off.
2. Remove the USB Cap and plug the MP-C855 directly into your computer's USB port. You may choose to use a USB extension cable to connect to a computer.
3. You can switch between USB modes quickly after your player has been connected to the computer. Press and hold **M** during connection to toggle between the USB modes.



USB-MTP Mode

When the MP-C855 is connected under USB-MTP mode:

- + Your computer will automatically recognize the player as an MTP Device. An icon representing your player will appear under "Audio Devices" when you open "My Computer".
- + It may take Windows several minutes to recognize and set up the device the first time it is connected depending on your hardware configuration.

USB-MSC Mode

When the MP-C855 is connected under USB-MSC mode:

- + Your computer will automatically recognize the player as an MTP Device. An icon representing your player will appear as a "Removable Disk" when you open "My Computer".
- + It may take Windows several minutes to recognize and set up the device the first time it is connected depending on your hardware configuration.

USB CONNECTIONS

Transferring Files

The USB 2.0 High-Speed connection makes it easy to transfer music files (or any other data files) quickly between the player and your computer. Simply use the player as you would a floppy disk using basic operating system commands.

If you need further assistance with transferring files, please refer to your operating system's instruction manual or on-screen help. If you are using media management software such as iTunes, Winamp, or Windows Media Player, please refer to their documentation for support.



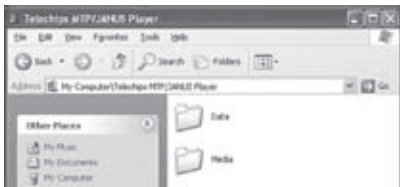
Do not disconnect or otherwise interrupt the player during transmission - this could damage or corrupt the player's firmware or your files. If the player is accidentally disconnected and is not working properly, reset your player (see the Getting Started section for details).

USB-MTP Mode

Files transferred under USB-MTP mode will not be available when using a USB-MSC connection (and vice versa).

When the MP-C855 is connected under USB-MTP mode:

1. Double-click the "My Computer" icon on your desktop and then double-click the MP-C855 icon (MTP HD Multimedia Player).
2. Your player contains two folders: Data and Media.
 - ❖ Drag your media files to the Media folder (e.g., MP3, AVI, JPG, WAV, WMA files).
 - ❖ Drag all other types of files to the Data folder for storage (e.g., TXT, DOC, XLS, etc). Data files are only visible from a computer; these files will not be available from within the player itself.



USB CONNECTIONS

USB-MSC Mode

Files transferred under USB-MSC mode will not be available when using a USB-MTP connection (and vice versa).

When the MP-C855 is connected under USB-MSC mode:

1. Double-click the “My Computer” icon on your desktop and then double-click the MP-C855 icon (Removable Disk).
2. Drag your media files (or other files) to the Removable Disk.
 - ✧ You may choose to use folders/subfolders to organize your media and data.



USB CONNECTIONS

Disconnecting from a Computer

Disconnect your player as instructed below to prevent data loss or file/firmware corruption.

USB-MTP Mode

If you are using a USB-MTP connection, you can simply disconnect the cable from your player.

USB-MSC Mode

1. Double-click the green arrow in the taskbar located on the lower-right side of the computer screen (Safely Remove Hardware).



2. **Safely Remove Hardware:** Select "USB Mass Storage Device" from the list that appears and then click on "Stop".

Stop a Hardware Device:

Select "USB Mass Storage Device" from the list that appears and then click on "OK".
Select "USB Mass Storage Device" from the list that appears and then click on "OK".

3. When the "Safe to Remove Hardware" window appears, click the OK button and disconnect the USB cable from the player and your computer.



Build Music Library (USB-MSC Mode Only)

After disconnecting from a computer, your player will take a few moments to rebuild the music library (file database).

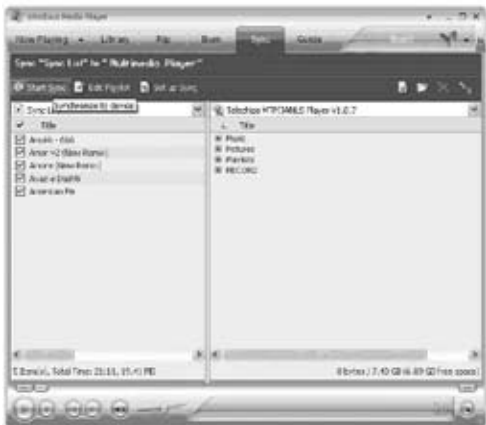
WINDOWS MEDIA PLAYER 10

You can use Windows Media Player 10 (WMP10) and a USB-MTP connection to manage your music media library with Microsoft Windows XP or newer.

Music File Transfers

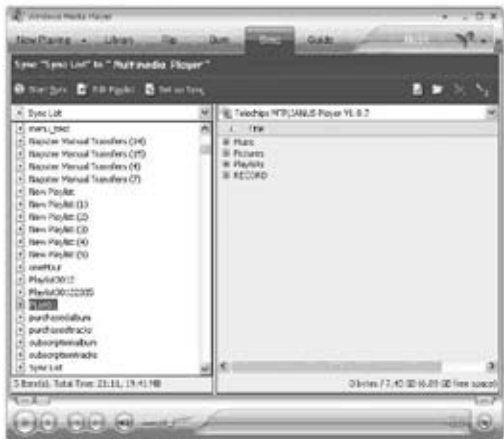
To transfer files using WMP10:

1. Run Window Media Player 10
2. Connect your player to the computer. A “Device Setup” window will appear.
3. In the “Device Setup” window, choose “Synchronize this device with this library for this session only” and click “Finish”.
4. Select “Sync”. There are 2 ways to sync your files with your player:
 - ✧ **Drag your songs, photos, or converted video files to the sync list on the left hand side.** Click “Start Sync” to start transferring the selected files.



WINDOWS MEDIA PLAYER 10

- ✦ **Select a playlist from the “Sync List” drop-down menu. Click “Start Sync” to start transferring the files in the selected playlist.**



For more information and support regarding music transfer and synchronization with Windows Media Player (WMP), please see the help section included with WMP (click Help > Synchronizing Content to Devices).

WINDOWS MEDIA PLAYER 10

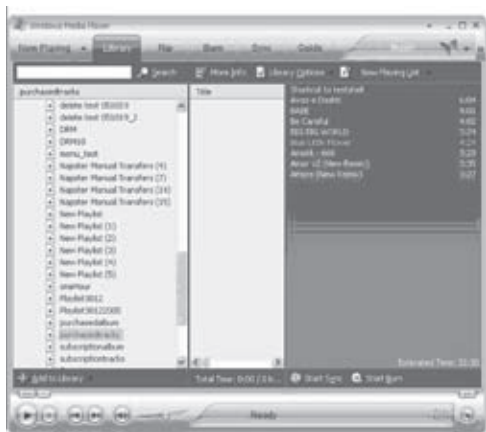
Creating Playlists

Playlists are an easy way to organize and store your favorite music mixes so you can listen to them whenever you want.

When a playlist is transferred using Windows Media Player, every song in the playlist will be transferred as well.

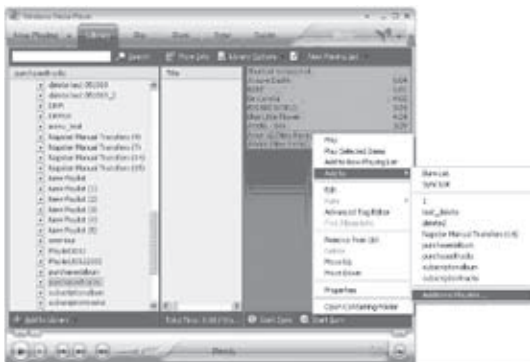
To create playlists using WMP10:

1. Run Window Media Player 10
2. Select "Library" and then drag the desired song(s) to the "Now Playing List" on the right side.



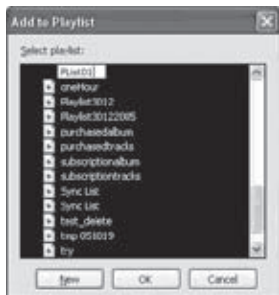
WINDOWS MEDIA PLAYER 10

3. Highlight all of the songs in the “Now Playing List” and then use the mouse to right-click the list. Choose “Add to” and then “Additional Playlists...”



An “Add to Playlist” window will appear.

4. Select “New” and enter the playlist name, then click “OK”. A new playlist will be created.



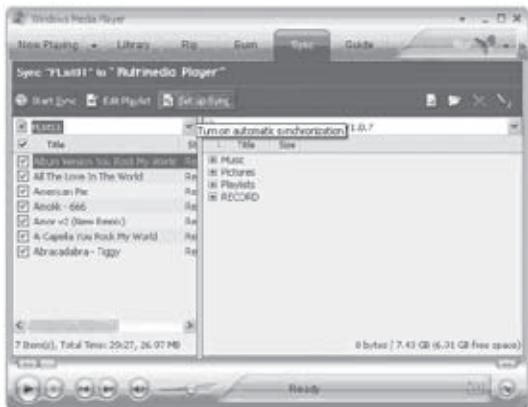
WINDOWS MEDIA PLAYER 10

Automatic Windows Media Playlist Synchronization

By default, WMP is set to transfer and synchronize files manually. You can choose to have Windows Media Player automatically synchronize your playlists when you connect your player to the computer.

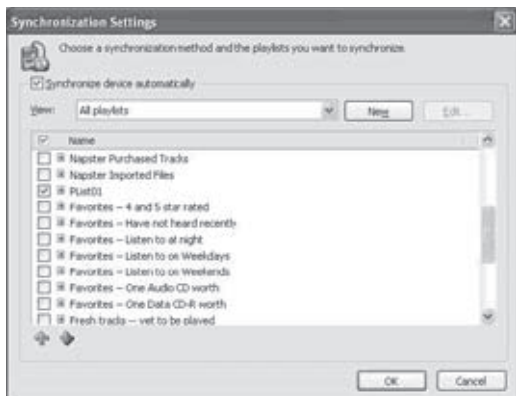
To change the synchronization settings:

1. Connect your player with the computer and run Window Media Player 10.
2. In the SYNC menu, click the “Set up Sync” button. A “Synchronization Settings” window will appear.
3. Check “Synchronize device automatically” and check the playlist(s) you want to sync.



WINDOWS MEDIA PLAYER 10

4. Click “OK” to start the synchronization.



5. When synchronization is complete, disconnect your player from the computer.
6. Turn on your player and select “Music”.
7. The synchronized playlist(s) from WMP will have been added under the “Playlist” category.

FIRMWARE UPGRADES

Upgrading the Firmware

From time to time, COBY may release firmware upgrades to improve the performance of the MP-C855 or to add additional features. Please check the COBY website periodically at www.cobyusa.com to see if new firmware has been released for your player. If you are experiencing abnormal behavior with your player, you may choose to restore (format) your player before updating its firmware.



Do not interrupt the firmware upgrade process — doing so could damage your player and render it inoperable.

See the documentation that is included with the firmware upgrade file for detailed instructions.

1. Connect your player to the computer.
2. Download the latest firmware for your player from www.cobyusa.com. Save this file to the computer.
3. Double-click the downloaded file (you may need a file compression utility installed on your computer). In the window that appears, double-click the file "factory4.exe" to start the upgrade utility.
4. Follow the on-screen instructions to start the upgrade process.
5. When the upgrade is complete, disconnect your player from the computer.
4. Turn on your player to complete the firmware upgrade process.

ABOUT MP3/WMA MUSIC FILES

For more information about digital MP3 and WMA files, please visit our website at www.cobyusa.com.

TROUBLESHOOTING

If you have a problem with this device, please read the troubleshooting guide below and check our website at www.cobyusa.com for Frequently Asked Questions (FAQs) and firmware updates. If these resources do not resolve the problem, please contact Technical Support.

COBY Electronics Technical Support

Address: 56-65 Rust St.
Maspeth, NY 11378

Hours: Monday to Friday, 8:00 AM–11:00 PM EST
Saturday to Sunday, 8:00 AM–11:00 PM EST

Phone: 718-416-3197 or 800-681-2629

Email: techsupport@cobyusa.com

Web: www.cobyusa.com

The player does not turn on.

- ✦ Ensure that the battery retains a charge. Try replacing the battery with a new one.
- ✦ Try resetting your player (remove and replace the battery).
- ✦ Ensure that the Hold switch is disengaged.

The buttons do not work.

- ✦ Ensure that the battery retains a charge. Try replacing the battery with a new one.
- ✦ Ensure that the Hold switch is disengaged.

I cannot transfer files to the player.

- ✦ Ensure that your computer is running a supported operating system.
- ✦ If you are running Microsoft Windows 98 SE, ensure that the USB driver has been properly installed.
- ✦ If using the supplied USB extension cable, ensure that it is securely attached to the player and the PC, or try using another USB cable.
- ✦ If you have connected the player through a USB hub, try connecting the player directly to your computer.

TROUBLESHOOTING

- + Ensure that the player's memory capacity is not full.
- + Ensure that the Hold switch is disengaged.

There is no sound during playback.

- + Check the volume level.
- + Ensure that the headphones are attached securely to the player.

The sound quality of the music is poor.

- + Try playing the file on your computer. If the sound quality is still poor, try downloading the file again or re-encoding the file yourself.
- + Ensure that the bit rate of the file is not too low. The higher the bit rate of the file, the better it will sound. The minimum recommended bitrate is 128kbps for MP3s and 96kbps for WMAs.
- + Try lowering the volume of the player.
- + Ensure that the headphones are attached securely to the player.

The player will not play my music file.

- + Ensure that the file is in a compatible format.
- + The file may be copy-protected and you no longer have authorization to play this file. If you feel this is in error, please contact the service from which you downloaded the file.

The LCD characters are corrupted or something is wrong with the display.

- + Ensure that the correct menu language has been set.
- + Try resetting your player (remove and replace the battery).

The player has malfunctioned.

- + Try resetting your player (remove and replace the battery).
- + Try updating the player's firmware. Please refer to the [Firmware Upgrades](#) section of this manual for detailed instructions.

SPECIFICATIONS

Display Type	128 x 32 Dot-Matrix LCD with Backlight
Memory	512MB Integrated Flash Memory
Audio Format Support	MP3, WMA
DRM Support	WMDRM10
Song Info Support	ID3, LRC
Recording Format	IMA-ADPCM Encoding
FM Frequency Range	87.5 - 108.0MHz
PC Interface	USB 2.0 Hi-Speed (MSC or MTP)
Plug and Play Support	Windows 98SE/2000/ME/XP or newer Mac OS X
Audio Output	3.5mm Stereo (Headphone)
Audio Input	Integrated Microphone
Menu Language Support	English, French, German, Hebrew, Italian, Portuguese, Spanish, Chinese (Trad), Chinese (Simp)
Power Supply	1 x "AAA" Battery
Unit Dimensions	2.2" x 2.87" x 0.82" (WHD)

Specifications and manual are subject to change without prior notice.

NOTES

NOTES

NOTES

COBY Electronics Corp.

56-65 Rust Street
Maspeth, NY 11378

www.cobyusa.com
www.ecoby.com