

tyco
Electronics



Elo Entuitive Touchcomputer

User Guide ESY1529L

Elo Entuitive ESY1529L Touchcomputer Series

entuitive
Touchmonitors



Revision B

Elo Entuitive Touchcomputer User Guide

15.0" LCD Desktop Touchcomputer

ESY1529L Touchcomputer Series



Revision B

P/N 008606

Elo TouchSystems, Inc.

1-800-ELOTOUCH
www.elotouch.com



Copyright © 2005 Elo TouchSystems Inc. All Rights Reserved.

No part of this publication may be reproduced, transmitted, transcribed, stored in a retrieval system, or translated into any language or computer language, in any form or by any means, including, but not limited to, electronic, magnetic, optical, chemical, manual, or otherwise without prior written permission of Elo TouchSystems.

Disclaimer

The information in this document is subject to change without notice. Elo TouchSystems makes no representations or warranties with respect to the contents hereof, and specifically disclaims any implied warranties of merchantability or fitness for a particular purpose. Elo TouchSystems reserves the right to revise this publication and to make changes from time to time in the content hereof without obligation of Elo TouchSystems to notify any person of such revisions or changes.

Trademark Acknowledgments

IntelliTouch, SecureTouch, AccuTouch, Entuitive, and MonitorMouse are trademarks of Elo TouchSystems, Inc.

Other product names mentioned herein may be trademarks or registered trademarks of their respective companies. Elo TouchSystems claims no interest in trademarks other than its own.

Table of Contents

Chapter 1		Chapter 3	
Introduction	1	Safety/Serviceing the Touchcomputer	17
Precautions	1		
About the Product	1	Chapter 4	
Operating System	2	Technical Description	19
Windows Xp Embedded , XP and 2000	2	Block Diagram	19
Windows CE	2	Mother Board Block Daigram	20
Customer Display	2	Connectors on Mother Board	21
Magnetic Stripe Reader (MSR)	2	Computer Specifications	26
Touchscreen	2	Processor	26
Drivers	2	Memory	26
External Connections and Upgrades	3	Green Function	26
External Connections	3	Audio Function	26
Wireless Network Capabilities	3	Operating System	26
CD/DVD Drives	3	Ports	26
Wired Network Connections	3	Real Time Clock	27
Hard Drive for CE Version	3	Windows CE Board Support Package	27
Mouse	3	Panel Connectors	27
Keyboard	4	Display	28
Upgrades and Changes	4	Touchscreen Assembly	29
Accessory Kit	4	External 12 VDC Power Supply	29
		Stand	29
Chapter 2		Customer Display	30
Touchcomputer Setup	7	Optical Parameters	30
Initial Turn On and Software Registration	7	USB MSR	31
Touchcomputer Operating System Setup	7	Specifications	31
Computer Reboots	7		
Testing Pre-installed Devices	7	Chapter 5	
Customer Display Testing	7	Touchcomputer Component Layout	33
Keyboard Card Reader Testing	8	Touchcomputer Assembly	34
HID Card Reader Testing	8	Touchcomputer Exploded View	35
Convert MSR from HID to Keyboard			
emulation	8	Chapter 6	
Convert MSR from Keyboard emulation to		Components	37
HID	8	External 12 VDC Power Supply	37
Controls	15	Cables	37
Power	15	External Cables	37
Technical Assistance	16		
Using the Touchcomputer	16	Chapter 7	
Using the Web	16	Environmental Requirements	39
Using the Phone	16	Temperature Ranges	39
Power and OSD Lockout	16		

Humidity	39
Altitude	39
Regulatory Information	43
Warranty	45
Index	47

INTRODUCTION

Congratulations on your purchase of an Elo TouchSystems Entuitive Touchcomputer. This manual is to help you operate and maintain the Touchcomputer.

Precautions

Follow all warnings, precautions and maintenance as recommended in this user's manual to maximize the life of your unit. See Appendix B for more information on touchmonitor safety.

About the Product

Your LCD Desktop Touchcomputer is a 15" XGA TFT color display with the following features:

The Touchcomputer consists of a 15 inch LCD monitor and a computer in a package approximately the size of a monitor. The Touchcomputer is capable of running Windows CE, Windows 2000, Windows Xp Embedded and Windows XP depending on how the Touchcomputer is configured and the options the user selects. The Touchcomputer consists of an LCD main display with a touchscreen, a backlight inverter, a touch controller, speakers, and a single board computer (SBC). The Touchcomputer also includes an external 12 V $\overline{\text{DC}}$ power Supply, a stand, a chassis and case, and internal and external cables. The Touchcomputer provides an optional Magnetic Stripe Reader and an optional Customer Display. The Touchcomputer does not come with a keyboard or a Mouse, but it does provide external ports to add them. The Touchcomputer has on screen touch to use as a

mouse and an on screen keyboard to take the place of an external keyboard. The Touchcomputer provides the following options.

Operating System

Microsoft® Windows® XP Professional, Microsoft® Windows® XP Embedded, Microsoft® Windows® 2000, Microsoft® Windows® CE.

Windows XP, Windows Xp Embedded and 2000

When Windows XP, Windows Xp Embedded and Windows 2000 are selected, the Touchcomputer will boot from the hard drive, which contains the operating system. No compact Flash will be provided.

Windows CE

When Windows CE is selected as the operating system, the Touchcomputer will boot from the onboard compact flash. No hard drive will be provided.

Customer Display

An optional serial customer display can be selected. No applications software is provided for the Customer Display. A test program is provided to verify the Customer Display is operating properly.

Magnetic Stripe Reader (MSR)

A USB HID (not available in Windows CE version) or USB Keyboard Emulation MSR can be selected. No applications software is provided for the MSR. A test program is provided to verify the MSR is operating properly.

Touchscreen

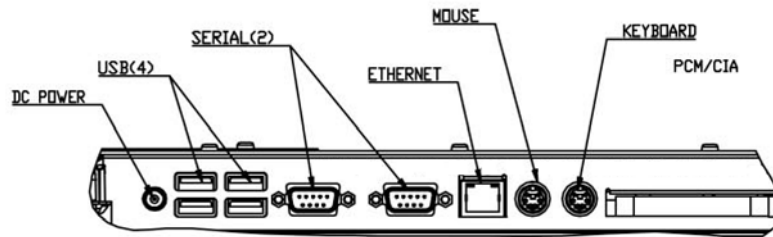
CarrollTouch, AccuTouch or IntelliTouch touchscreens may be selected with a USB interface. No applications software is provided for the touchscreen. A test program is provided to verify the touchscreen is operating properly.

Drivers

Drivers and test programs will be provided with each system to operate all options selected.

External Connections and Upgrades

The following drawing shows the Touchcomputer External connector panel. This panel of connectors is used by the user to make external connections to the Touchcomputer. No external connections, other than power, are needed for the Touchcomputer to operate.



External Connections

Using these external connections, the following capabilities can be provided to the Touchcomputer by the user:

Wireless Network Capabilities

Wireless network capabilities can be provided via a wireless card added to the PCMCIA slot.

CD/DVD Drives

CD/DVD drives can be added using the external USB inputs.

Wired Network Connections

Wired network connections including internet can be made using the Ethernet input.

Hard Drive for CE Version

A hard drive for the CE version of the Touchcomputer can be added using the USB inputs.

Mouse

A mouse can be added using the mouse port.

Keyboard

- A keyboard can be added using the keyboard port.

Upgrades and Changes

A laptop type hard drive can be added internally to the CE version of the Touchcomputer.

- Compact Flash can be added (through the compact flash door in the back of the Touchcomputer) to the Touchcomputer on Windows XP, Windows Xp Embedded and Windows 2000 Touchcomputers.
- Operating System changes between Windows XP, Windows Xp Embedded and Windows 2000 can be made by loading the proper operating system on the internal hard drive.
- Operating system changes between either Windows 2000, Windows Xp Embedded and WindowsXP to Windows CE can be made by adding Compact Flash with the appropriate image and booting from the compact flash.
- Operating system changes from Windows CE to either Windows XP, Windows Xp Embedded or Windows 2000 can be made by adding an internal or external hard drive with the new operating system loaded.

Accessory Kit

An accessory kit will be provided with each monitor. The accessory kit provides the following:

- Touch Tool CD-The touchtool CD contains the drivers and manual for EloTouch touchscreen products. The touch drivers will come loaded with the Touchcomputer. These drivers are provided if the operating system needs to be reloaded.
- Touchcomputer CD-The Touchcomputer CD contains the drivers for devices used with the Touchcomputer, a copy of the Touchcomputer Users Guide, test programs to test the Touchcomputer, a copy of the My-T-Touch software, a copy of the Windows CE image. These are only needed if the operating system needs to be reloaded. A Board support Package (BSP) for Windows CE is included for creating customers own image. See the BSP notes and directions on the CD. See section 4.2.8 for a description of the BSP.
- Quick Install Guide-Shows pictorially how to operate the Touchcomputer.

- US Power Cable
- European Power Cable
- Power Brick
- Applicable Operating System CD(Windows 2000, Windows Xp Embedded or Windows XP)
- No CD is provided for Windows CE (but the image is on the Touchcomputer CD.)
- No serial or USB cables are provided

TOUCHCOMPUTER SETUP

Initial Turn On and Software Registration

Touchcomputer Operating System Setup

The initial setup of the Windows operating system takes approximately 5-10 minutes. Additional time may be needed depending on computers hardware configuration and connected devices. To setup the Windows OS for you computer, turn on your computer and follow the instructions on the screen.

Testing Pre-installed Devices

Touchcomputers come pre installed with several different hardware options. To test these options, click on the following icons on the Windows toolbar on the bottom right of the computer. You may also use the desktop icons. This can only be done with Touchcomputer with options installed.

Customer Display Testing

- Click on the “CD” icon.
- The customer display should change, now displaying the text “Elo TouchSystems Customer Display”.

Keyboard Card Reader Testing

- Click on the “KB MSR TEST” icon.
- Scan a credit card ensure data scanned correctly by seeing applicable information on all three tracks from the credit card.

HID Card Reader Testing

- Click on the “HID MSR TEST” icon
- Click on scan button
- Scan a credit card ensure data scanned correctly by seeing applicable information on all three tracks from the credit card.

Convert MSR from HID to keyboard emulation

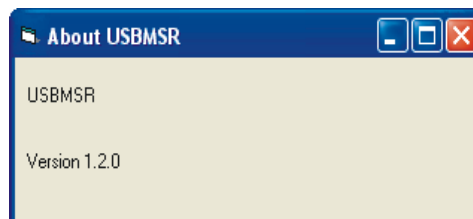
MSR Conversion:

Get program @ http://www.magtek.com/support/software/demo_programs/usb_swipe_insert_reader.asp

1. To convert from HID to Keyboard Emulation Mode.

- 1.1 Double click on HID MSR Icon in desktop.
The following window will appear

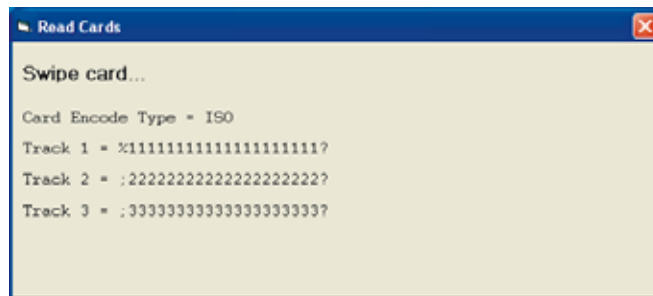
- 1.2 Click on About to verify version



- 1.3 Close About Dialog box.
- 1.4 Click on Read Cards...
- 1.5 This dialog will appear

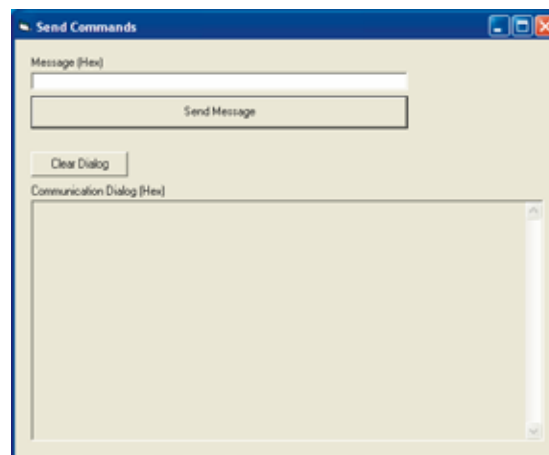


1.6 Swipe Test card.



1.7 Close Read Cards Dialog.

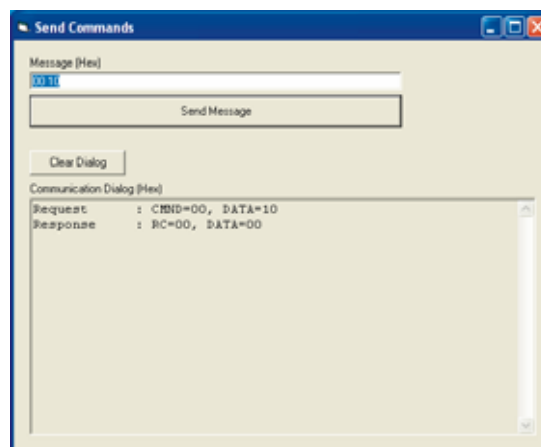
1.8 Click on Send Command. The following dialog box will appear



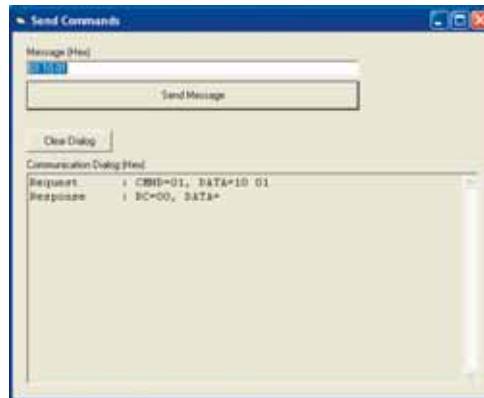
1.9 To send Inquiry MSR type

1.10 Type 00 10 into area under the heading Message(Hex)

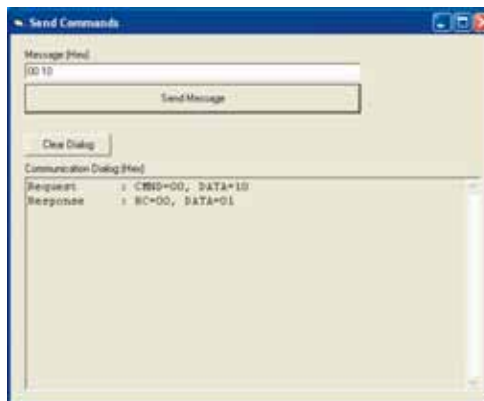
1.11 Then click on Send Message.



- 1.12 The DATA=00 means it's USB HID.
- 1.13 Switch to Keyboard Emulation
- 1.14 Type 01 10 01 into area under the heading Message(Hex)
- 1.15 Then click on Send Message.

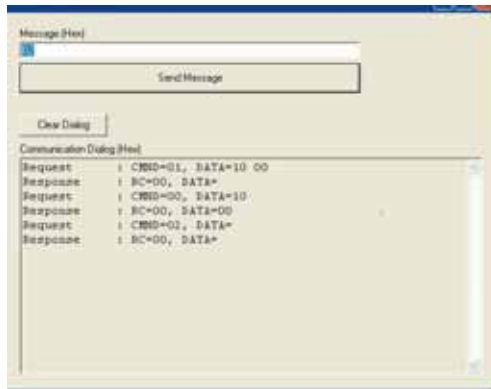


- 1.16 Send Inquiry MSR type
- 1.17 Type 00 10 into area under the heading Message(Hex)
- 1.18 Then click on Send Message.

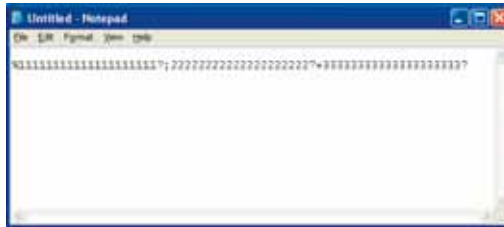


- 1.19 The DATA=01 means it's USB Keyboard Emulation.
- 1.20 You must now reset the MSR by sending the command 02.
- 1.21 Type 02 into area under the heading Message(Hex)

1.22 Then click on Send Message.



1.23 Double click on The KB MSR Test icon in the desktop and slide the test c card. The following icon will appear



1.24 Done.

Convert MSR from keyboard emulation to HID

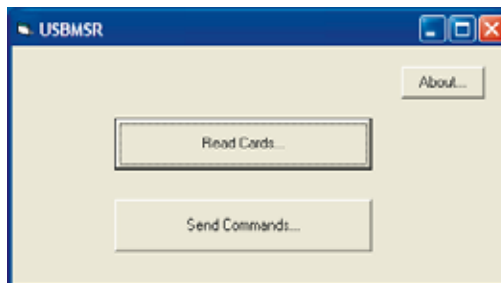
MSR Conversion:

Get program @ http://www.magtek.com/support/software/demo_programs/usb_swipe_insert_reader.asp

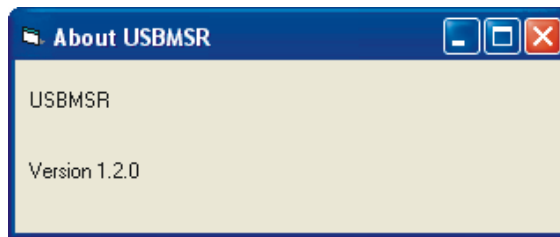
1. To convert from Keyboard Emulation to HID Mode.

1.1 Double click on HID MSR Icon in desktop.

The following window will appear



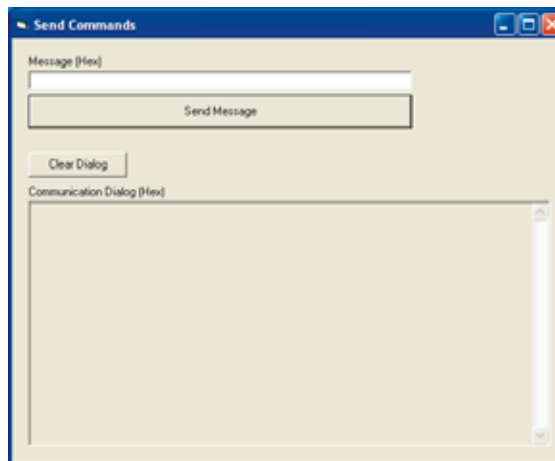
1.2 click on About to verify version



1.3 Close About Dialog.

1.4 Click on Send Commands

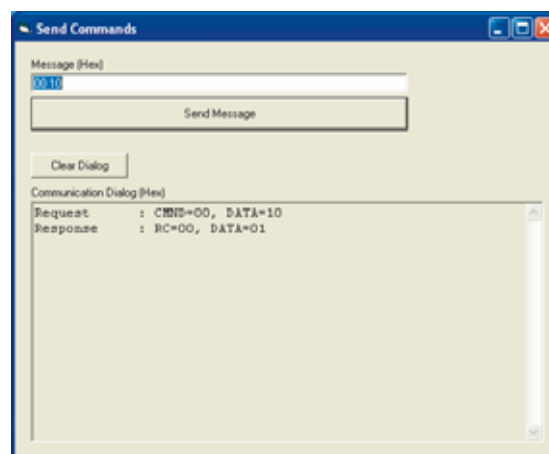
1.5 This Dialog will appear.



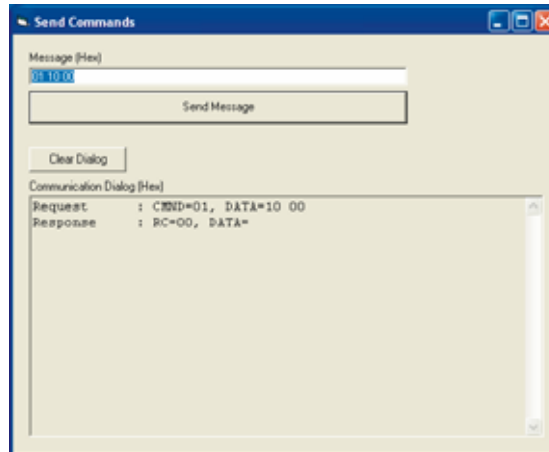
1.6 To send Inquiry MSR type

1.7 Type 00 10 into area under the heading Message(Hex)

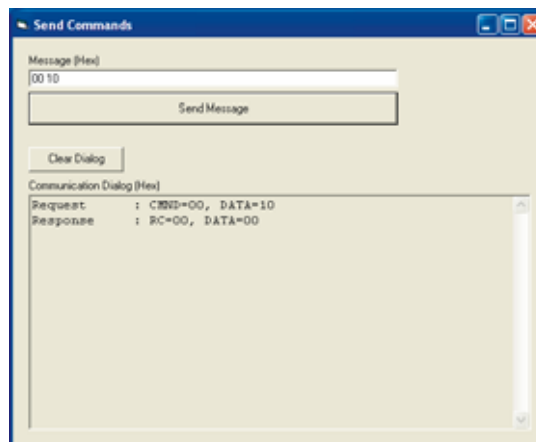
1.8 Then click on Send Message.



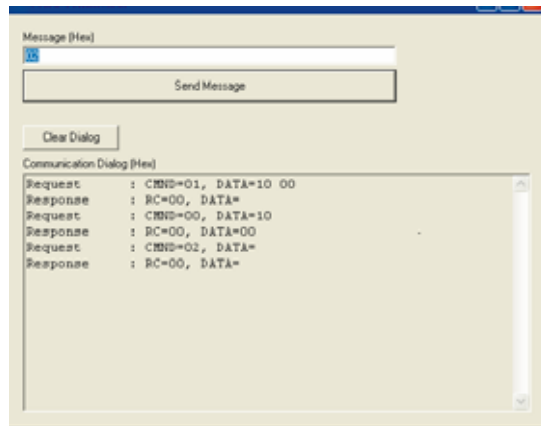
- 1.9 The DATA=01 means it's USB Keyboard Emulation.
- 1.10 Switch to HID
- 1.11 Type 01 10 00 into area under the heading Message(Hex)
- 1.12 Then click on Send Message.



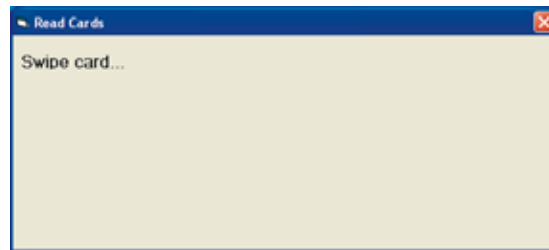
- 1.13 Send Inquiry MSR type
- 1.14 Type 00 10 into area under the heading Message(Hex)
- 1.15 Then click on Send Message.



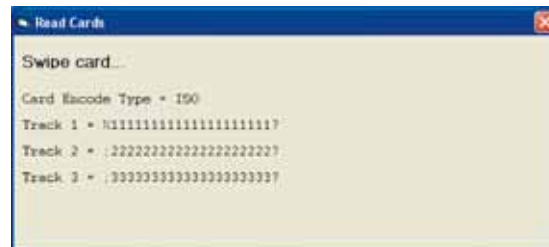
- 1.16 You must now reset the MSR by sending the command 02.
- 1.17 Type 02 into area under the heading Message(Hex)
- 1.18 Then click on Send Message.



- 1.19 Click on Read Cards...
- 1.20 This dialog will appear



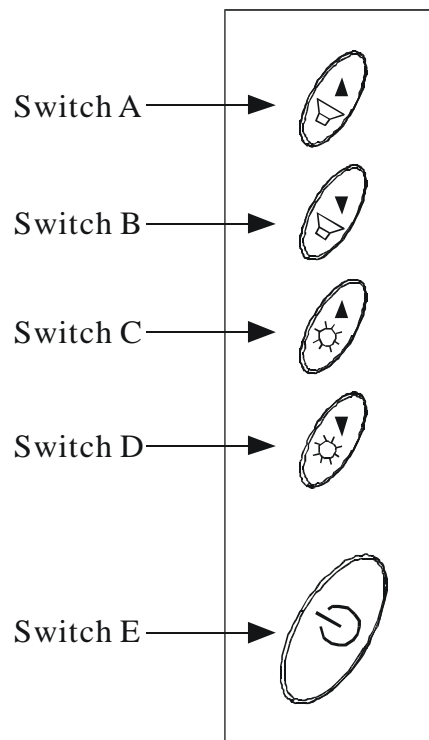
- 1.21 Swipe Test card.



- 1.22 Close Read Cards Dialog.
- 1.23 Done.

Controls

There are two controls to operate the Touchcomputer. There is a brightness control and a volume control. To increase the brightness, press the third button from the top. To decrease brightness, press the fourth button from the top. To increase the volume, press the top button. To decrease volume, press the second button from the top. The Touchcomputer has an On-Screen-Display(OSD) to indicate volume and brightness changes via an on screen bar graph.



Power

To turn power off, press and hold switch 5. To turn on press and hold switch 5 then shut down. To do a hard shutdown, press and hold switch 5. To turn power on, press the power button once. Power should not normally be turned off with the power switch. The pull down menu “shutdown” under START in the lower left corner of the display should be used.

Technical Assistance

There are three methods to obtain contact information for technical assistance on the Touchcomputer.

- Touchcomputer itself
- the Web
- telephone

These methods are described below.

Using the Touchcomputer

You can access the support information by going to the System Properties and clicking on the “Support Information” button. You can get to get to System Properties by either of the following methods:

- Right click “My Computer” and choose “Properties”
- Click on the “Start Button” and select “control panel” and double click on the “System” icon.

Using the Web

www.elotouch.com/support/default.asp

Using the Phone

Call toll-free 1-800-557-1458

Power and OSD Lock Out

Normally the 5 switches on the side of the monitor depicted in the figure in the controls section control power, brightness and volume. The power switch can be made not to operate by activating the power lockout function. The brightness and volume adjustment can be made not to operate by activating the OSD lockout function. The OSD lockout function can be activated by simultaneously pressing Switch 1 and Switch 2. The power lockout function can be activated by simultaneously pressing Switch 1 and Switch 3. When the switches are pressed, OSD lock or power lock will appear. The power lockout state can be set by releasing Switch 1 and Switch 3 in the desired state of power lock or power unlock.

The OSD lockout state can be set by releasing Switch 1 and 2 in the desired state of OSD lock or OSD unlock.

SAFETY/SERVICING THE TOUCHCOMPUTER

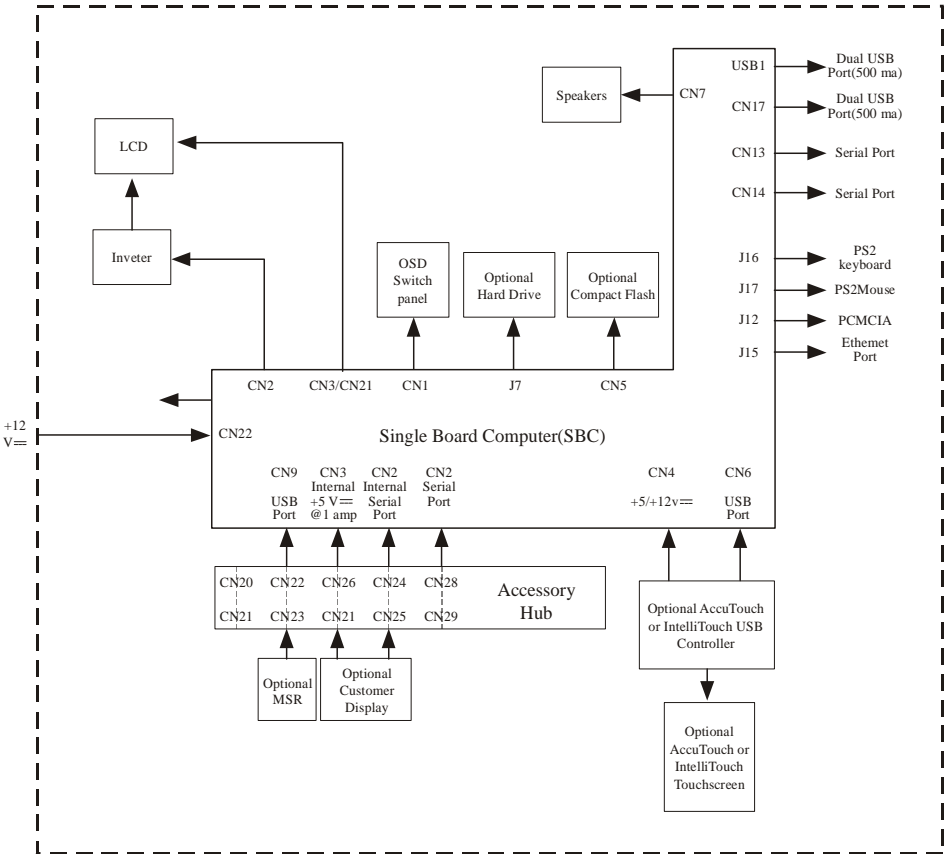
When servicing the computer perform the following:

- Perform an orderly shutdown using the operating system menu.
- Shut down the Touchcomputer and remove all external cables.
- When opening the Touchcomputer, periodically touch any metal parts of the Touchcomputer, such as metal portions of the case or connector shells on the monitor.
- Handle components and cards with care. Do not touch components on the cards. When adding memory, hold it by the edges, not contacts.

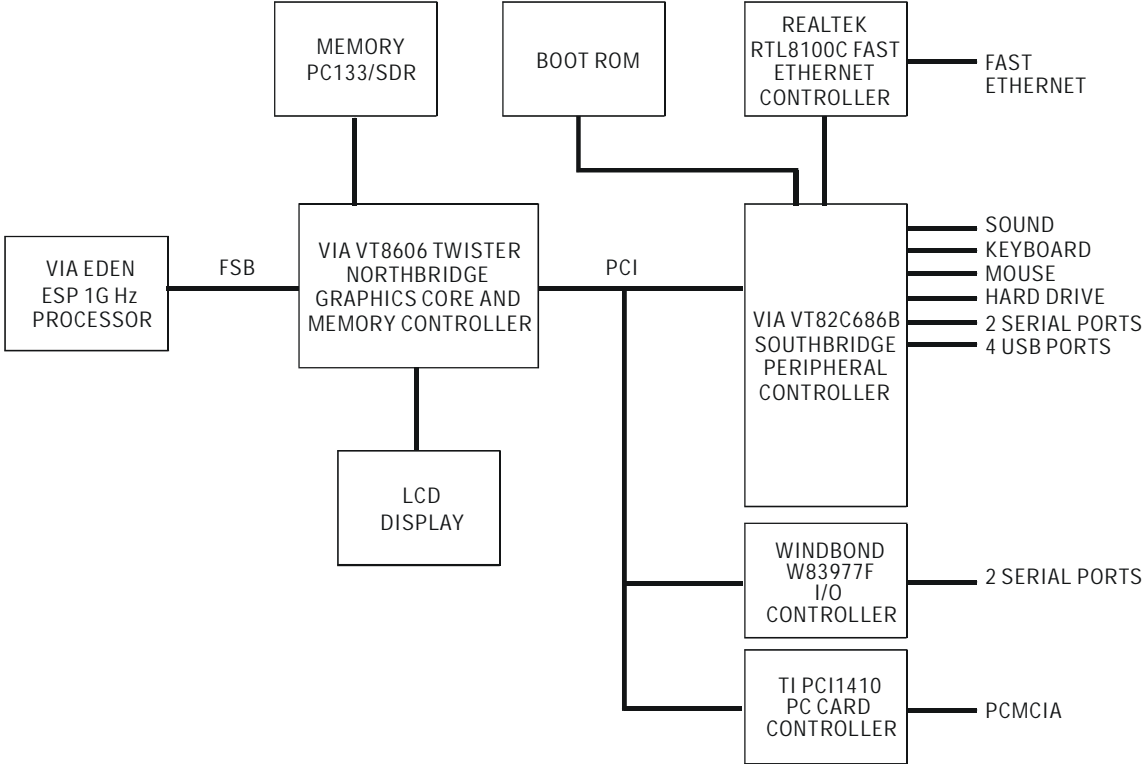
TECHNICAL DESCRIPTION

Block Diagram

The block diagram of the Touchcomputer is shown below:



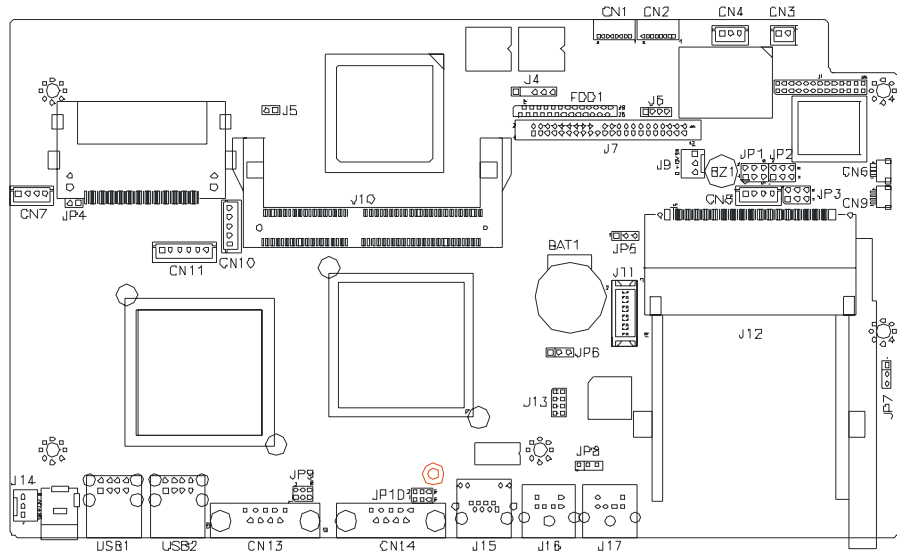
Mother Board Block Diagram



Connectors on Mother Board

The connectors on mother board allows you to connect external devices such as keyboard, floppy disk drives, hard disk drives, printers, etc. The following table lists the connectors on mother board and their respective functions.


Connector Locations on Mother Board



Connectors on Mother Board


- CN1, CN2: COM4 and COM3 Connectors
- CN3: +5V Connector
- CN4: +5V AND +12V Connector
- CN6, CN9: USB Pin Header
- CN10: Panel Inverter Power Connector
- CN11: OSD Panel Board Connector
- CN13, CN14: COM1 and COM2 Serial Ports
- FDD1: Floppy Drive Connector
- USB1, USB2: USB Connectors
- J4: IrDA Connector
- J6: Reset Button and IDE LED
- J7: Primary IDE Connectors
- J9: System Fan Power Connector
- J11: 24-bit LVDS Connector (DF13-20)
- J13: VGA CRT Connector
- J14: System Fan Power Connector
- J16: PS/2 Keyboard Connector
- J17: PS/2 Mouse Connector

CN1, CN2: COM4 and COM3 Connectors



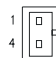
Pin #	Signal Name
1	DCD
2	RXD
3	CTS
4	GND
5	TXD
6	RTS
7	DSR
8	DTR

CN3: +5V Connector



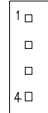
Pin #	Signal Name
1	+5V
2	Ground

CN4: +5V AND +12V Connector



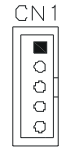
Pin #	Signal Name
1	+5V
2	Ground
3	+12V

CN6, CN9: USB Pin Header




Pin #	Signal Name
1	Ground
2	USB-
3	USB+
4	Vcc

CN10: Panel Inverter Power Connector



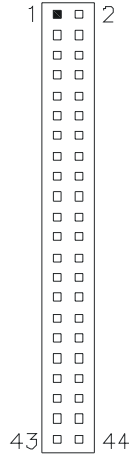
Pin #	Signal Name
1	+12V
2	Ground
3	Bright Adj
4	Ground
5	BKLT ON

CN11: OSD Panel Board Connector



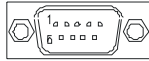
Pin #	Signal Name
1	Vol+
2	Vol-
3	Bright+
4	Bright-
5	Ground
6	Power On/Off

J7: Primary IDE Connectors



Signal Name	Pin #	Pin #	Signal Name
Reset IDE	1	2	Ground
Host data 7	3	4	Host data 8
Host data 6	5	6	Host data 9
Host data 5	7	8	Host data 10
Host data 4	9	10	Host data 11
Host data 3	11	12	Host data 12
Host data 2	13	14	Host data 13
Host data 1	15	16	Host data 14
Host data 0	17	18	Host data 15
Ground	19	20	Key
DRQ0	21	22	Ground
Host IOW	23	24	Ground
Host IOR	25	26	Ground
IOCHRDY	27	28	Host ALE
DACK0	29	30	Ground
IRQ14	31	32	No connect
ASDRAMess 1	33	34	No connect
ASDRAMess 0	35	36	ASDRAMess 2
Chip select 0	37	38	Chip select 1
Activity	39	40	Ground
Vcc	41	42	Vcc
Ground	43	44	N.C.

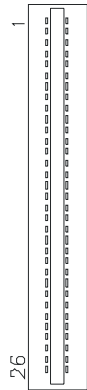
CN13, CN14: COM1 and COM2 Serial Ports



Signal Name	Pin #	Pin #	Signal Name
DCD	1	6	DSR
RXD	2	7	RTS
TXD	3	8	CTS
DTR	4	9	RI
GND	5	10	NC

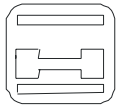
FDD1: Floppy Drive Connector

FDD1 is a slim 26-pin connector and will support up to 2.88MB FDD.



Signal Name	Pin #	Pin #	Signal Name
VCC	1	2	INDEX
VCC	3	4	DRV_SEL
VCC	5	6	DSK_CH
NC	7	8	NC
NC	9	10	MOTOR
DINST	11	12	DIR
NC	13	14	STEP
GND	15	16	WDATA
GND	17	18	WGATE
GND	19	20	TRACK
NC	21	22	WPROT
GND	23	24	RDATA
GND	25	26	SIDE

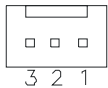
USB1, USB2: USB Connectors



Pin #	Signal Name
1	Vcc
2	USB-
3	USB+
4	Ground

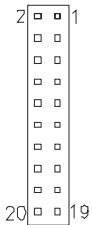
J9: System Fan Power Connector

J9 is a 3-pin header for an optional fan. The fan must be a 12V fan.



Pin #	Signal Name
1	Ground
2	+12V
3	Rotation detection

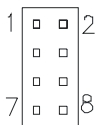
J11: 24-bit LVDS Connector (DF13-20)



Signal Name	Pin #	Pin #	Signal Name
TX0-	2	1	TX0+
Ground	4	3	Ground
TX1-	6	5	TX1+
5V/3.3V	8	7	Ground
TX3-	10	9	TX3+
TX2-	12	11	TX2+
Ground	14	13	Ground
TXC-	16	15	TXC+
5V/3.3V	18	17	ENABKL
+12V	20	19	+12V

J13: VGA CRT Connector

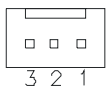
J13 is an 8-pin header for an optional external VGA CRT female connector.



Signal Name	Pin	Pin	Signal Name
Red	1	2	Vcc
Green	3	4	Ground
Blue	5	6	N.C.
N.C.	7	8	N.C.
Ground	9	10	H-Sync
Ground	11	12	V-Sync
Ground	13	14	N.C.
Ground	15	16	N.C.

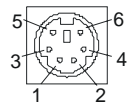
J14: System Fan Power Connector

J14 is a 3-pin header for the optional system fan. The fan must be a 12V fan.



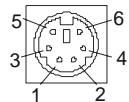
Pin #	Signal Name
1	Ground
2	+12V
3	Rotation detection

J16: PS/2 Keyboard Connector



Pin	Signal Name
1	Keyboard data
2	N.C.
3	GND
4	5V
5	Keyboard clock
6	N.C.

J17: PS/2 Mouse Connector



Pin	Signal Name
1	Mouse data
2	N.C.
3	GND
4	5V
5	Mouse clock
6	N.C.

Computer Specifications

Processor

- VIA Eden 1000MHz low power CPU or equivalent

Memory

- RAM- 512 MB

Green Function

- APM 1.2 compliant

Audio Function

- Stereo one watt capability per channel

Operating System

- Support for WinCE.Net 4.2 Pro+
- Support for Windows Pro 2000
- Support for Windows Xp Pro Sp2
- Support for Windows Xp Embedded

Ports

- Four RS-232 Serial Ports. Two internal ports(CN1 and CN2) and 2 external ports (CN13 and CN14).
- Connectors-External ports shall use standard DB9 connectors.
- Six USB self powered version 1.1 Ports. All ports have the capability to provide 0.5 amps at 5 V_{DC} each. Two ports are internal (CN6 and CN9) and four external (USB1 and USB2).
- The external USB ports shall use two standard dual USB connectors.
- One Ethernet 100/10Base-T Port (J15)
- One PCMCIA version 2.1 Slot (J12)
- PS2 Keyboard (J16)
- PS2 Mouse (J17)

- One Compact Flash Socket (CN5)
- One hard drive socket located on the top of the board (J7)

Real Time Clock

- Battery backed up real time clock that features a multi-century calendar.
- Lithium battery with socket.
- On Screen Display
- Volume Control
- Backlight Brightness

Windows CE Board Support Package

A board support package is available to assist users with custom software development. The board support package contains the following items:

- Installation instructions
- A platform image that can be added to the Wince platform directory.
- A .cec file or equivalent to add the platform features to the platform builder catalog.
- A boot loader to support Ethernet debug and download.
- All testing shall be done with the final image from Elo.

Panel Connectors

The following connectors are available from the outside of the Touchcomputer

- Four USB ports
- Ethernet
- 2 serial port
- PS2 Keyboard (No keyboard provided)
- PS2 Mouse (No mouse provided)
- Board input Power
- PCMCIA Slot with eject button
- Compact Flash

Display

The LCD display consists of an LCD, inverter, and OSD switch module. The performance of the LCD display will be:

Display Size	15.0 diagonal
Native Resolution	1024 x 768 pixels
Display Color Number	16.2 million Colors, 6 Bit+FRC
Display Type	a-Si TFT active . matrix
Typical Contrast Ratio	400:1
Typical/Min	LCD 350 cd/m ²
Brightness	AccuTouch287 cd/m ² IntelliTouch322 cd/m ² CarrollTouch 322 cd/m ²
Typical Display Speed	Rising Time 9 ms / Falling Time16 ms
Typical Vertical Viewing Angle	60 deg (looking down) / 40 deg (looking up) @CR 10
Typical Horizontal Viewing Angle	60 deg (looking from Left) / 60 deg (Looking from Right)CR 10
Chromaticity	Chromaticity coordinates will fall within the values in the table

TABLE 1. Chromaticity Values

	Symbol	Minimum	Typical	Maximum
Chromaticity of White	Wx Wy	0.282 0.288	0.312 0.323	0.343 0.359
Chromaticity of Red	Rx Ry	0.613 0.314	0.620 0.345	0.673 0.377
Chromaticity of Green	Gx Gy	0.260 0.536	0.297 0.528	0.334 0.623
Chromaticity of Blue	Bx By	0.111 0.055	0.145 0.092	0.178 0.130

Touchscreen Assembly

The touchscreen assembly consists of a touchscreen and a controller.

CarrollTouch, AccuTouch or IntelliTouch touchscreens will be provided as options and use one of the USB ports on the SBC.

External 12 V_{DC} Power Supply

The Touchcomputer shall be powered by 12 V_{DC} from a universal type power supply brick with the following characteristics:

- Input voltage 100 to 240 V_{AC}
- Input frequency 50/60 Hz
- Output voltage 12 V_{DC}
- Output line and load regulation +/- 5%
- Output current=4.2 Amps max

Stand

The stand supports the LCD display and provides adjustment for the angle of the display with respect to the viewer.

Customer Display

The Customer Display is a twenty character two line vacuum fluorescent display (VFD). It consists of a VFD and VFD controller. There is a serial version controller and a USB controller. The actual VFD is common to the serial and USB versions. CE will only use the serial as no CE USB driver is available.

Optical Parameters

Characters per row	20
Number of rows	2
Character configuration	5x7 dot matrix
Character Height	9.5 mm
Character width	6.2 mm
Character configuration	ASCII
Character color	Blue green
MTBF	300,000 hours

USB MSR

The USB card reader is a USB port powered MSR which conforms to ISO/ANSI standards. The USB MSR is available in HID and Keyboard emulation versions. The reader shall read all three stripes on a standard credit card or drivers license. The reader shall conform to the USB Human Interface Device class specification Version 1.1 The reader communicates over a USB revision 1.1 port. The MSR is software reconfigurable from HID to keyboard emulation and from keyboard emulation to HID.

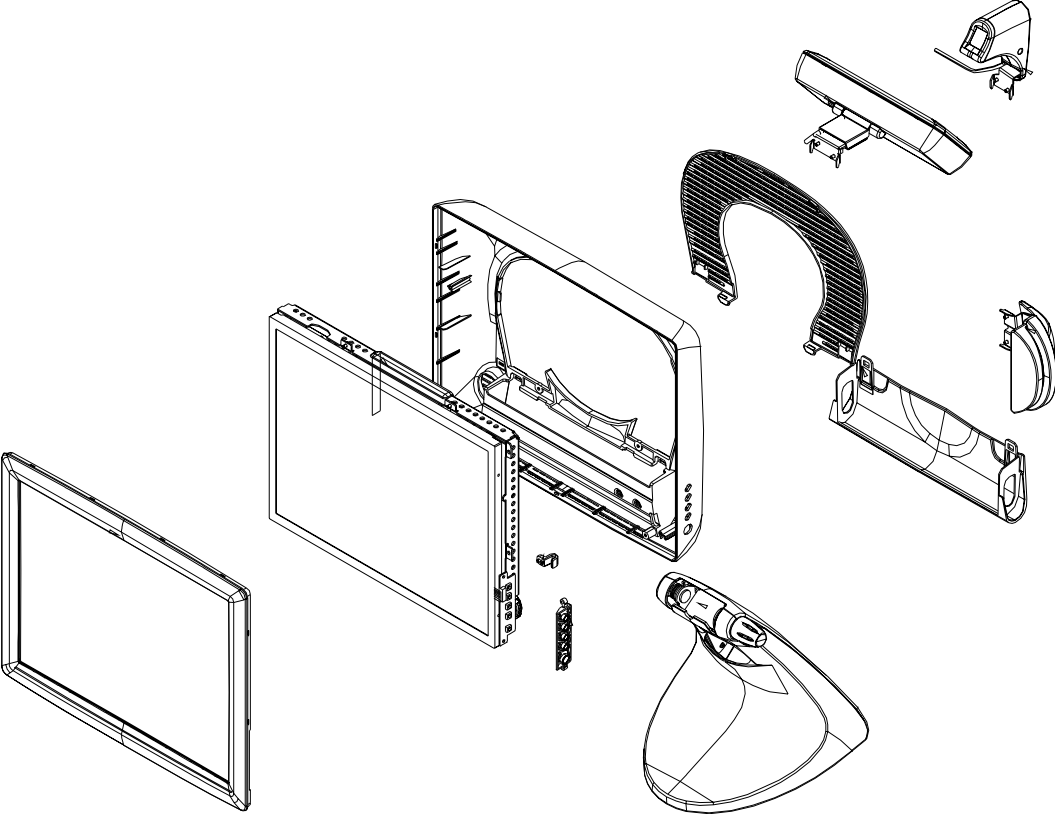
TOUCHCOMPUTER COMPONENT LAYOUT

The figures below show the complete Touchcomputer identifying the major components discussed in Chapter 1.

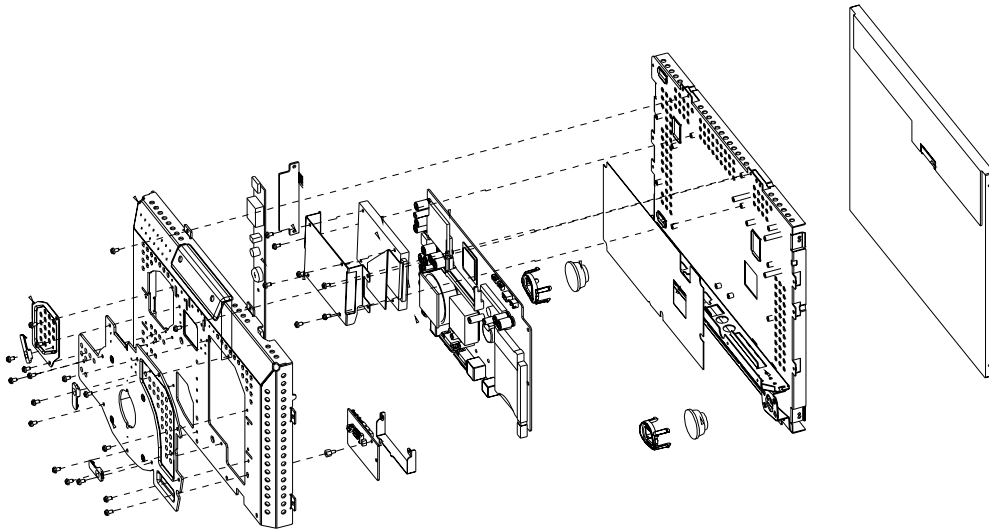
Specifications

Reference Standards	International Standards Organization, American
Conform to applicable standards	National Standards Institute, California Drivers License, American Association of Motor Vehicle Administrators
Power Input	From USB port
Message Format	ASCII
Card Speed	3 to 50 IPS
MTBF	Electronics 125,000 hrs; Head 1,000,000 passes
Operating Current	15 ma max
Suspend current	200 ua max

Touchcomputer Assembly



Touchcomputer Exploded View



COMPONENTS

External 12 V_{DC} Power Supply

The Touchcomputer is powered by 12 V_{DC} from a universal type power supply brick. The power supply shall provide the following capability:

- Input voltage 100 to 240 v_{AC}
- Input frequency 50/60 Hz
- Output voltage 12 v_{DC}
- Output line and load regulation +/- 5%
- Output current 0 to 4.2 Amps

Cables

External Cables

The following cables will be included:

- US power cable for the external power supply
- European power cable for the external power supply
- Power cable from the 12 V_{DC} external supply to the Touchcomputer.

All cables are 6 feet long.

ENVIRONMENTAL REQUIREMENTS

Temperature Ranges

Operating Temperature (Independent of altitude)	0° to 35°
Non-Operating Temperature (Independent of altitude)	-20° to 60°

Humidity

Operating (non-condensing)	20% to 80%
Non-Operating (38.7°C max. wet bulb temperature)	5% to 95%

Altitude

Operating 0 to + 12,000 feet [3,658m].	Equivalent to 14.7 to 10.1 psia
Non-Operating 0 to + 40,000 feet [12,192m].	Equivalent to 14.7 to 4.4 psia.

REGULATORY INFORMATION

I. Electrical Safety Information:

A) Compliance is required with respect to the voltage, frequency, and current requirements indicated on the manufacturer's label. Connection to a different power source than those specified herein will likely result in improper operation, damage to the equipment or pose a fire hazard if the limitations are not followed.

B) There are no operator serviceable parts inside this equipment. There are hazardous voltages generated by this equipment which constitute a safety hazard. Service should be provided only by a qualified service technician.

C) This equipment is provided with a detachable power cord which has an integral safety ground wire intended for connection to a grounded safety outlet.

1) Do not substitute the cord with other than the provided approved type. Under no circumstances use an adapter plug to connect to a 2-wire outlet as this will defeat the continuity of the grounding wire.

2) The equipment requires the use of the ground wire as a part of the safety certification, modification or misuse can provide a shock hazard that can result in serious injury or death.

3) Contact a qualified electrician or the manufacturer if there are questions about the installation prior to connecting the equipment to mains power.

II. Emissions and Immunity Information

A) Notice to Users in the United States: This equipment has been tested and found to comply with the limits for a Class B digital device, pursuant to Part 15 of FCC Rules. These limits are designed to provide reasonable protection against harmful interference in a residential installation. This equipment generates, uses, and can radiate radio frequency energy, and if not installed and used in accordance with the instructions, may cause harmful interference to radio communications.

B) Notice to Users in Canada: This equipment complies with the Class B limits for radio noise emissions from digital apparatus as established by the Radio Interference Regulations of Industrie Canada.

C) Notice to Users in the European Union: Use only the provided power cords and interconnecting cabling provided with the equipment. Substitution of provided cords and cabling may compromise electrical safety or CE Mark Certification for emissions or immunity as required by the following standards:

This Information Technology Equipment (ITE) is required to have a CE Mark on the manufacturer's label which means that the equipment has been tested to the following Directives and Standards:

This equipment has been tested to the requirements for the CE Mark as required by EMC Directive 89/336/EEC indicated in European Standard EN 55 022 Class B and the Low Voltage Directive 73/23/EEC as indicated in European Standard EN 60 950.

D) General Information to all Users: This equipment generates, uses and can radiate radio frequency energy. If not installed and used according to this manual the equipment may cause interference with radio and television communications. There is, however, no guarantee that interference will not occur in any particular installation due to site-specific factors.

1) In order to meet emission and immunity requirements, the user must observe the following:

- a) Use only the provided I/O cables to connect this digital device with any computer.
- b) To ensure compliance, use only the provided manufacturer's approved line cord.
- c) The user is cautioned that changes or modifications to the equipment not expressly approved by the party responsible for compliance could void the user's authority to operate the equipment.

2) If this equipment appears to cause interference with radio or television reception, or any other device:

- a) Verify as an emission source by turning the equipment off and on.
- b) If you determine that this equipment is causing the interference, try to correct the interference by using one or more of the following measures:
 - i) Move the digital device away from the affected receiver.
 - ii) Reposition (turn) the digital device with respect to the affected receiver.
 - iii) Reorient the affected receiver's antenna.
 - iv) Plug the digital device into a different AC outlet so the digital device and the receiver are on different branch circuits.
 - v) Disconnect and remove any I/O cables that the digital device does not use. (Unterminated I/O cables are a potential source of high RF emission levels.)
 - vi) Plug the digital device into only a grounded outlet receptacle. Do not use AC adapter plugs. (Removing or cutting the line cord ground may increase RF emission levels and may also present a lethal shock hazard to the user.)

If you need additional help, consult your dealer, manufacturer, or an experienced radio or television technician.



この装置は、クラスA情報技術装置です。この装置を家庭環境で使用すると電波妨害を引き起こすことがあります。この場合には使用者が適切な対策を講ずるよう要求されることがあります。 VCCI-A



As an ENERGY STAR[®] partner, Elo has determined that this product meets the ENERGY STAR[®] guidelines for energy efficiency.

"The application of this monitor is restricted to special controlled luminous environments. The screen surface tends to reflect annoying light of lamps and sunlight. To avoid these reflections the monitor should not be positioned in front of a window or directed to luminaries. The monitor is in compliance with Reflection Class III according to ISO 13406-2"

"Die Anwendung dieses Bildschirms ist auf speziell kontrollierte Umgebungsbeleuchtungen eingeschränkt. Die Bildschirmoberfläche neigt zu störenden Spiegelungen von Lampen und Sonnenlicht. Um diese Reflexionen zu vermeiden sollte der Monitor nicht auf Fenster und Beleuchtungseinrichtungen ausgerichtet sein. Der Monitor erfüllt nur die Reflexionsklasse III nach ISO 13406-2"

This class A digital apparatus meets all requirements of the Canadian Interference-Causing Equipment Regulations. Cet appareil numérique de la classe A respecte toutes les exigences du Règlement sur le matériel brouilleur du Canada.

This device complies with Part 15 of the FCC Rules. Operation is subject to the following two conditions: (1) This device may not cause harmful interference, and (2) This device must accept any interference received, including interference that may cause undesired operation.

CAUTION:

Danger of explosion if battery is incorrectly replaced. Replace only with the same or equivalent type recommended by the manufacturer. Dispose of used batteries according to the manufacturer's instructions.

VORSICHT:

Explosionsgefährlich bei unsachgemäßen Austausch der Batterie. Ersatz nur durch denselben oder einem vom Hersteller empfohlenem ähnlichen Typ. Entsorgung gebrauchter Batterien nach Angaben des Herstellers.

WARRANTY

Except as otherwise stated herein or in an order acknowledgment delivered to Buyer, Seller warrants to Buyer that the Product shall be free of defects in materials and workmanship. The warranty for the touchmonitors and components of the product is 1 year.

Seller makes no warranty regarding the model life of components. Seller's suppliers may at any time and from time to time make changes in the components delivered as Products or components.

Buyer shall notify Seller in writing promptly (and in no case later than thirty (30) days after discovery) of the failure of any Product to conform to the warranty set forth above; shall describe in commercially reasonable detail in such notice the symptoms associated with such failure; and shall provide to Seller the opportunity to inspect such Products as installed, if possible. The notice must be received by Seller during the Warranty Period for such product, unless otherwise directed in writing by the Seller. Within thirty (30) days after submitting such notice, Buyer shall package the allegedly defective Product in its original shipping carton(s) or a functional equivalent and shall ship to Seller at Buyer's expense and risk.

Within a reasonable time after receipt of the allegedly defective Product and verification by Seller that the Product fails to meet the warranty set forth above, Seller shall correct such failure by, at Seller's options, either (i) modifying or repairing the Product or (ii) replacing the Product. Such modification, repair, or replacement and the return shipment of the Product with minimum insurance to Buyer shall be at Seller's expense. Buyer shall bear the risk of loss or damage in transit, and may insure the Product. Buyer shall reimburse Seller for transportation cost incurred for Product returned but not found by Seller to be defective. Modification or repair, of Products may, at Seller's option, take place either at Seller's facilities or at Buyer's premises. If Seller is unable to modify, repair, or replace a Product to conform to the warranty set forth above, then Seller shall, at Seller's option, either refund to Buyer or credit to Buyer's account the purchase price of the Product less depreciation calculated on a straight-line basis over Seller's stated Warranty Period.

THESE REMEDIES SHALL BE THE BUYER'S EXCLUSIVE REMEDIES FOR BREACH OF WARRANTY. EXCEPT FOR THE EXPRESS WARRANTY SET FORTH ABOVE, SELLER GRANTS NO OTHER WARRANTIES, EXPRESS OR IMPLIED BY STATUTE OR OTHERWISE, REGARDING THE PRODUCTS, THEIR FITNESS FOR ANY PURPOSE, THEIR QUALITY, THEIR MERCHANTABILITY, THEIR NONINFRINGEMENT, OR OTHERWISE. NO EMPLOYEE OF SELLER OR ANY OTHER PARTY IS AUTHORIZED TO MAKE ANY WARRANTY FOR THE GOODS OTHER THAN THE WARRANTY SET FORTH HEREIN. SELLER'S LIABILITY UNDER THE WARRANTY SHALL BE LIMITED TO A REFUND OF THE PURCHASE PRICE OF THE PRODUCT. IN NO EVENT SHALL SELLER BE LIABLE FOR THE COST OF PROCUREMENT OR INSTALLATION OF SUBSTITUTE GOODS BY BUYER OR FOR ANY SPECIAL, CONSEQUENTIAL, INDIRECT, OR INCIDENTAL DAMAGES.

Buyer assumes the risk and agrees to indemnify Seller against and hold Seller harmless from all liability relating to (i) assessing the suitability for Buyer's intended use of the Products and of any system design or drawing and (ii) determining the compliance of Buyer's use of the Products with applicable laws, regulations, codes, and standards. Buyer retains and accepts full responsibility for all warranty and other claims relating to or arising from Buyer's products, which include or incorporate Products or components manufactured or supplied by Seller. Buyer is solely responsible for any and all representations and warranties regarding the Products made or authorized by Buyer. Buyer will indemnify Seller and hold Seller harmless from any liability, claims, loss, cost, or expenses (including reasonable attorney's fees) attributable to Buyer's products or representations or warranties concerning same.



INDEX



A

About the Product, 1
Accessory Kit, 4
Altitude, 39
Audio Function, 26

B

Block Diagram, 19

C

Cables, 37
CD/DVD Drives, 3
Chromaticity, 28
Computer Specifications, 26
Connectors on Mother Board, 21
Controls, 8
Customer Display, 30
Customer Display Testing, 7

D

Display, 28
Display Color, 28
Display Size, 28
Display Type, 28
Drivers, 2

E

External 12 VDC Power Supply, 29,37
External Cables, 37
External Connections, 3
External Connections and Upgrades, 3

G

Green Function, 26

H

Hard Drive for CE Version, 3
Horizontal Viewing Angle, 28
Humidity, 39

I

Initial Turn On and Software Registration, 7

K

Keyboard, 4
Keyboard Card Reader Testing, 8

M

Magnetic Stripe Reader (MSR), 2
Memory, 26
Models, 41
Mouse, 3
Mother Board Block Diagram, 20
MSR Conversation, 8,11

N

Native Resolution, 28

O

Operating System, 26
Optical Parameters, 30

P

Panel Connectors, 27
Ports, 26
Power, 9
Power and OSD lockout, 16
Precautions, 1
Processor, 26

R

Real Time Clock, 27

S

Safety/servicing the Touchcomputer, 33
Specifications, USB MSR, 31
Stand, 29

T

- Technical Assistance, 16
- Technical Description, 19
- Temperature Ranges, 39
- Testing Pre-installed Devices, 7
- Touchcomputer assembly, 34
- Touchcomputer component layout, 33
- Touchcomputer Setup, 7
- Touchcomputer Exploded View, 35
- Touchcomputer Operating System Setup, 7
- Touchscreen, 2
- Touchscreen Assembly, 29
- Touch Tool CD, 4
- Typical Contrast Ratio, 28
- Typical Display Speed, 28
- Typical/Min Brightness, 28

U

- Upgrades and Changes, 4
- USB Card Reader Testing, 8
- USB MSR, 31
- Using the Phone, 16
- Using the Touchcomputer, 16
- Using the Web, 16

V

- Vertical Viewing Angle, 29

W

- Warranty, 45
- Windows CE, 2
- Windows CE Board Support Package, 27
- Windows XP and 2000, 2
- Wired Network Connections, 3
- Wireless Network Capabilities, 3

Check out Elo's Web site!

www.elotouch.com

Get the latest...

• **Product information**

• **Specifications**

• **News on upcoming events**

• **Press releases**

• **Software drivers**

Getting in Touch with Elo

To find out more about Elo's extensive range of touch solutions, visit our Web site at www.elotouch.com or simply call the office nearest you:

USA & Headquarters
Elo TouchSystems, Inc.
301 Constitution Drive,
Menlo Park, CA 94025.

(800) ELO-TOUCH (800-356-8682)
Tel 650-361-4700
Fax 650-361-4747
eloinfo@elotouch.com

Germany
Elo TouchSystems GmbH & Co. KG
Haidgraben 6
D-85521 Ottobrunn
Germany

Tel +49(89)60822-0
Fax +49(89)60822-150
elosales@elotouch.com

Belgium
Elo TouchSystems
Diestsesteenweg 692
B-3010 Kessel-Lo
Belgium

Tel +32(16) 35-2100
Fax +32(16) 35-2101
elosales@elotouch.com

Japan
Touch Panel Systems K.K
Sun Homada Bldg. 2F
1-19-20 Shin-Yokohama,
Kanagawa 222-0033
Japan

Tel +81(45)478-2161
Fax +81(45)478-2180
www.tps.co.jp

tyco

Electronics



USB INTELLIHEAD FOR SWIPE READERS TECHNICAL REFERENCE MANUAL

Manual Part Number 99875320-1P

OCTOBER 2004

PRELIMINARY

MAGTEK[®]

REGISTERED TO ISO 9001:2000

20725 South Annalee Avenue

Carson, CA 90746

Phone: (310) 631-8602

FAX: (310) 631-3956

Technical Support: (651) 415-6800

www.magtek.com

Copyright© 2004
MagTek®, Inc.
Printed in the United States of America

Information in this document is subject to change without notice. No part of this document may be reproduced or transmitted in any form or by any means, electronic or mechanical, for any purpose, without the express written permission of MagTek, Inc.

MagTek is a registered trademark of MagTek, Inc.

IntelliHead™ is a trademark of MagTek, Inc.

USB (Universal Serial Bus) Specification is Copyright© 1998 by Compaq Computer Corporation, Intel Corporation, Microsoft Corporation, NEC Corporation.

REVISIONS

Rev Number	Date	Notes
1	XX Oct 04	Initial Release

Limited Warranty

MagTek, Inc. warrants that the Product described in this document is free of defects in materials and workmanship for a period of one year from the date of purchase where the date of purchase is defined as the date of shipment from MagTek. During this warranty period, MagTek shall, at their option, repair or replace without charge for either parts or labor, any failure, malfunction, defect or nonconformity which prevents the product from performing in accordance with MagTek's published technical specifications and manuals.

This warranty does not apply to wear of the magnetic read head. This warranty shall not apply if the product is modified, tampered with, or subject to abnormal working conditions. This warranty does not apply when the malfunction results from the use of the Product in conjunction with ancillary or peripheral equipment where it is determined by MagTek that there is no fault in the Product itself.

Notification by the Customer to MagTek of any condition described above should be directed to the Customer's MagTek Sales Representative or to MagTek's Help Desk at (651) 415-6800. If the Product is to be returned from the Customer to MagTek, a returned material authorization (RMA) will be issued by MagTek. The Customer shall be responsible for shipping charges to MagTek, (20801 S. Annalee Ave., Carson, CA 90746). MagTek shall be responsible for shipping charges back to the Customer.

Repair or replacement as provided under this warranty is the exclusive remedy. This warranty is in lieu of all other warranties, express or implied.

FCC WARNING STATEMENT

This equipment has been tested and found to comply with the limits for Class B digital device, pursuant to Part 15 of FCC Rules. These limits are designed to provide reasonable protection against harmful interference when the equipment is operated in a residential environment. This equipment generates, uses, and can radiate radio frequency energy and, if not installed and used in accordance with the instruction manual, may cause harmful interference to radio communications. However, there is no guarantee that interference will not occur in a particular installation.

FCC COMPLIANCE STATEMENT

This device complies with Part 15 of the FCC Rules. Operation of this device is subject to the following two conditions: (1) This device may not cause harmful interference; and (2) this device must accept any interference received, including interference that may cause undesired operation.

CANADIAN DOC STATEMENT

This digital apparatus does not exceed the Class B limits for radio noise for digital apparatus set out in the Radio Interference Regulations of the Canadian Department of Communications.

Le présent appareil numérique n'émet pas de bruits radioélectriques dépassant les limites applicables aux appareils numériques de la classe B prescrites dans le Règlement sur le brouillage radioélectrique édicté par le ministère des Communications du Canada.

CE STANDARDS

Testing for compliance to CE requirements was performed by an independent laboratory. The unit under test was found compliant to Class B.

UL/CSA

This product is recognized per Underwriter Laboratories and Canadian Underwriter Laboratories 1950.

TABLE OF CONTENTS

SECTION 1. FEATURES AND SPECIFICATIONS	1
FEATURES	1
CONFIGURATIONS	2
ACCESSORIES	2
REFERENCE DOCUMENTS	2
SPECIFICATIONS	3
SECTION 2. INSTALLATION	5
USB CONNECTION	5
WINDOWS PLUG AND PLAY SETUP	5
MOUNTING	5
SECTION 3. OPERATION	7
CARD READ	7
SECTION 4. USB COMMUNICATIONS	9
HID USAGES	9
REPORT DESCRIPTOR	10
CARD DATA	11
TRACK 1 DECODE STATUS	12
TRACK 2 DECODE STATUS	12
TRACK 3 DECODE STATUS	12
TRACK 1 DATA LENGTH	12
TRACK 2 DATA LENGTH	12
TRACK 3 DATA LENGTH	12
CARD ENCODE TYPE	13
TRACK DATA	13
TRACK 1 DATA	13
TRACK 2 DATA	13
TRACK 3 DATA	13
COMMANDS	14
COMMAND NUMBER	14
DATA LENGTH	14
DATA	14
RESULT CODE	15
GET AND SET PROPERTY COMMANDS	15
SOFTWARE_ID PROPERTY	16
SERIAL_NUM PROPERTY	17
POLLING_INTERVAL PROPERTY	17
MAX_PACKET_SIZE PROPERTY	18
INTERFACE_TYPE PROPERTY	19
SECTION 5. DEMO PROGRAM	21
INSTALLATION	21
OPERATION	21
SOURCE CODE	22
APPENDIX A. USB INTELLIHEAD SWIPE READER	23

FIGURES AND TABLES

Figure 1-1. 3-Track USB IntelliHead	vi
Table 1-1. Specifications	3
Table 2-1. 5-Pin Connector	5
Figure A-1. USB IntelliHead P/N 21030006	24

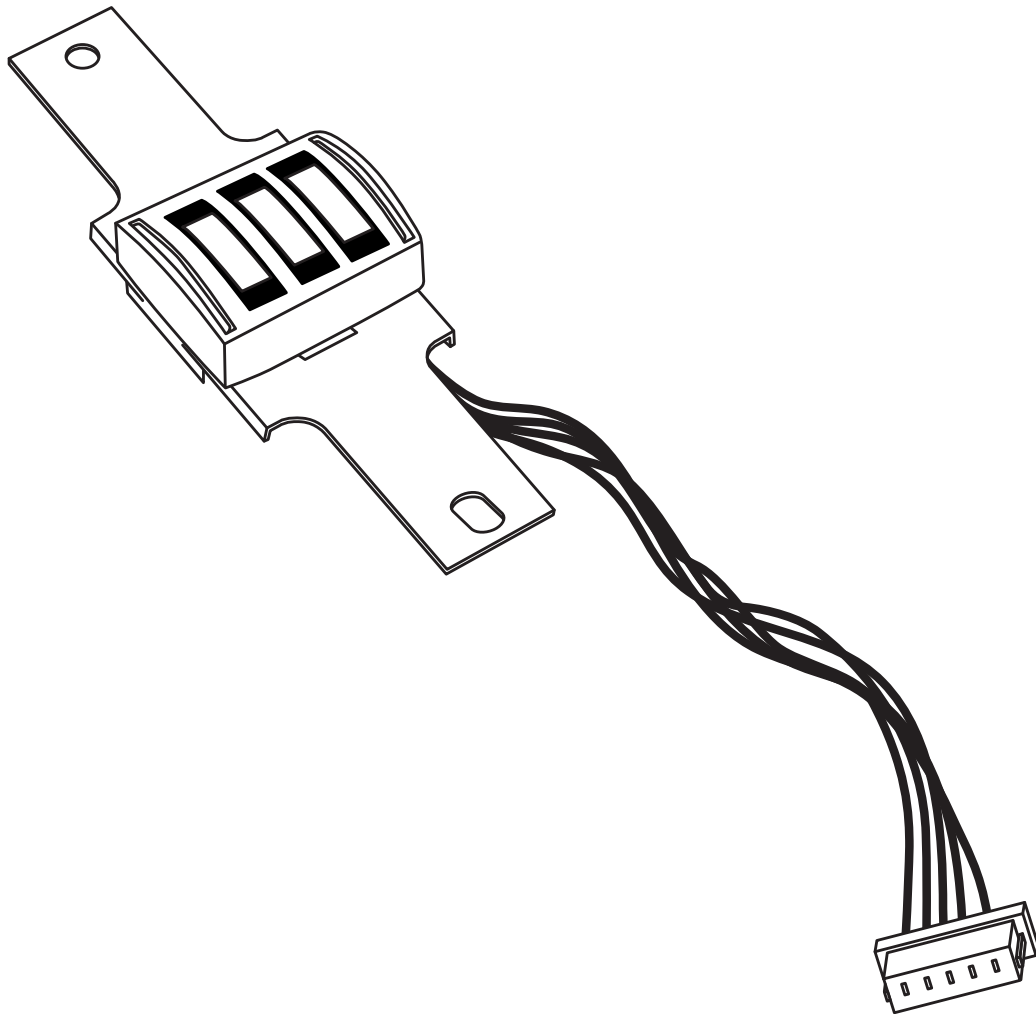


Figure 1-1. 3-Track USB IntelliHead

SECTION 1. FEATURES AND SPECIFICATIONS

The USB (Universal Serial Bus) IntelliHead Swipe Reader is a compact magnetic stripe card reader that conforms to ISO standards. The Reader is compatible with any device with a USB interface. A card is read by sliding it past the head either forward or backward.

The reader conforms to the USB Human Interface Device (HID) Class specification Version 1.1. This allows host applications designed for the latest versions of Windows to easily communicate to the device using standard Windows API calls that communicate to the device through the HID driver that comes with Windows.

Unlike HID keyboard emulation readers, this device does not use keyboard emulation. It behaves like a vendor-defined HID device so that a direct communication path can be established between the Host application and the device without interference such as keystrokes from other HID devices.

A demo program with its source code is available, written in Visual Basic, that exercises the device using the standard Windows API.

FEATURES

Major features of the USB IntelliHead are as follows:

- Powered through the USB – no external power supply required
- Hardware Compatible with PC or any computer or terminal with a USB interface
- Bi-directional card reading
- Reads encoded data that meets ANSI/ISO/AAMVA standards and others such as ISO track 1 format on track 2 or 3.
- Reads up to three tracks of card data
- Compatible with USB specification Revision 1.1
- Compatible with HID specification Version 1.1
- Can use standard Windows HID driver for communications. No third part device driver is required.
- Programmable USB serial number descriptor
- Programmable USB Interrupt In Endpoint polling interval

CONFIGURATIONS

The Configurations are as follows:

Table 1-1. Configurations

Part Number	Description	Cable Length and Connector type	Drawing In
21030006	USB HID IntelliHead 3 tracks	125mm, 5 pin Molex	Appendix A

ACCESSORIES

The accessories are as follows:

Part Number	Description
21042806	USB MSR Demo Program with Source Code (Diskette)
99510026	USB MSR Demo Program with Source Code (WEB)

REFERENCE DOCUMENTS

MagTek *Magnetic Card Reader Design Kit Technical Specification (99821002)*

Axelson, Jan. *USB Complete, Everything You Need to Develop Custom USB Peripherals*, 1999. Lakeview Research, 2209 Winnebago St., Madison WI 53704, 396pp., <http://www.lvr.com>.

USB Human Interface Device (HID) Class Specification Version 1.1.

USB (Universal Serial Bus) Specification, Version 1.1, Copyright© 1998 by Compaq Computer Corporation, Intel Corporation, Microsoft Corporation, NEC Corporation.

USB Implementers Forum, Inc., www.usb.org.

SPECIFICATIONS

Table 1-2 lists the specifications for the USB IntelliHead. Figure 1-2 shows the dimensions for the standard product.

Table 1-1. Specifications

Reference Standards	ISO 7810 and ISO 7811 and AAMVA*
Power Input	5V from USB bus
Recording Method	Two-frequency coherent phase (F2F)
Message Format	ASCII
Card Speed	3 to 50 IPS
MTBF	Electronics: 125,000 hours. Head: 1,000,000 passes

ELECTRICAL

Current	
Normal Mode	15mA
Suspend Mode	200 μ A

MECHANICAL (STANDARD PRODUCT)

Weight	
Cable length	see table 1-1
Connector	see table 1-1

ENVIRONMENTAL

Temperature	
Operating	-40 °C to +70 °C (-40 °F to 158 °F)
Storage	-40 °C to +70 °C (-40 °F to 158 °F)
Humidity	
Operating	10% to 90% noncondensing
Storage	Up to 90% noncondensing
Altitude	
Operating	0-10,000 ft. (0-3048 m.)
Storage	0-50,000 ft. (0-15240 m.)

* ISO (International

SECTION 2. INSTALLATION

This section describes the cable connection, the Windows Plug and Play Setup, and the physical mounting of the unit.

USB CONNECTION

Since the USB IntelliHead is supplied as an OEM product, the installation and system integration will be unique for each application. The reader module must be attached to an appropriate connector which, in turn, connects to the USB hub. The pin numbers for the 5-pin connector are shown in Figure 2-1.

Pin numbers and signal descriptions for the cable shown in the illustration are listed in Table 2-1.

Table 2-1. 5-Pin Connector

Pin Number	Signal	Cable Color
1	VBUS	Red
2	- Data	White
3	+Data	Green
4	Ground	Black
5	Head Case	Brown

WINDOWS PLUG AND PLAY SETUP

On hosts with the Windows operating system, the first time the device is plugged into a specific USB port, Windows will pop up a dialog box, which will guide you through the process of installing a device driver for the device. After this process is completed once, Windows will no longer request this process as long as the device is plugged into the same USB port. The device driver that Windows will install for this device is the driver used for HID devices and it is part of the Windows operating system. When the dialog box pops up, follow the instructions in the dialog box. Sometimes Windows will find all the files it needs on its own without giving any prompts. Other times Windows will need to know the location of the files it needs. If Windows prompts for the file locations, insert the CD that was used to install Windows on your PC and point Windows to the root directory of the CD. Windows should find all the files it needs there.

MOUNTING

Refer to the appropriate Appendix in this document and/or to the *Magnetic Card Reader Design Kit* for complete mounting details.

SECTION 3. OPERATION

CARD READ

A card may be swiped past the read head at any time. The magnetic stripe must face toward the head and may be swiped in either direction. If there is data encoded on the card, the device will attempt to decode the data and then send the results to the host via a USB HID input report. After the results are sent to the host, the device will be ready to read the next card.

SECTION 4. USB COMMUNICATIONS

This device conforms to the USB specification revision 1.1. This device also conforms with the Human Interface Device (HID) class specification version 1.1. The device communicates to the host as a vendor-defined HID device. The details about how the card data and commands are structured into HID reports follow later in this section. The latest versions of the Windows operating systems come with a standard Windows USB HID driver. Windows applications that communicate to this device can be easily developed. These applications can communicate to the device using standard windows API calls that communicate to the device using the standard Windows USB HID driver. These applications can be easily developed using compilers such as Microsoft's Visual Basic or Visual C++. A demonstration program and its source code, written in Visual Basic, that communicates with this device is available. This demo program can be used to test the device and it can be used as a guide for developing other applications. More details about the demo program follow later in this document.

It is strongly recommended that application software developers become familiar with the HID specification the USB specification before attempting to communicate with this device. This document assumes that the reader is familiar with these specifications. These specifications can be downloaded free from www.usb.org.

This is a full speed USB device. This device has a number of programmable configuration properties. These properties are stored in non-volatile EEPROM memory. These properties can be configured at the factory or by the end user. The device has an adjustable endpoint descriptor polling interval value that can be set to any value in the range of 1ms to 255ms. This property can be used to speed up or slow down the card data transfer rate. The device also has an adjustable serial number descriptor. More details about these properties can be found later in this document in the command section.

The device will go into suspend mode when directed to do so by the host. The device will wakeup from suspend mode when directed to do so by the host. The device does not support remote wakeup.

This device is powered from the USB bus. Its vendor ID is 0x0801 and its product ID is 0x0002.

HID USAGES

HID devices send data in reports. Elements of data in a report are identified by unique identifiers called usages. The structure of the device's reports and the device's capabilities are reported to the host in a report descriptor. The host usually gets the report descriptor only once, right after the device is plugged in. The report descriptor usages identify the devices capabilities and report structures. For example, a device could be identified as a keyboard by analyzing the device's report descriptor. Usages are four byte integers. The most significant two bytes are called the usage page and the least significant two bytes are called usage IDs. Usages that are related can share a common usage page. Usages can be standardized or they can be vendor defined. Standardized usages such as usages for mice and keyboards can be found in the HID Usage Tables document and can be downloaded free at www.usb.org. Vendor-defined usages must have a usage page in the range 0xff00 – 0xffff. All usages for this device use vendor-defined magnetic stripe reader usage page 0xff00. The usage IDs for this device are defined in the

USB IntelliHead Swipe Reader

following table. The usage types are also listed. These usage types are defined in the HID Usage Tables document.

Magnetic Stripe Reader usage page 0xff00:

Usage ID (Hex)	Usage Name	Usage Type	Report Type
1	Decoding reader device	Collection	None
20	Track 1 decode status	Data	Input
21	Track 2 decode status	Data	Input
22	Track 3 decode status	Data	Input
28	Track 1 data length	Data	Input
29	Track 2 data length	Data	Input
2A	Track 3 data length	Data	Input
30	Track 1 data	Data	Input
31	Track 2 data	Data	Input
32	Track 3 data	Data	Input
38	Card encode type	Data	Input
20	Command message	Data	Feature

REPORT DESCRIPTOR

The HID report descriptor is structured as follows:

Item	Value (Hex)
Usage Page (Magnetic Stripe Reader)	06 00 FF
Usage (Decoding reader device)	09 01
Collection (Application)	A1 01
Logical Minimum (0)	15 00
Logical Maximum (255)	26 ff 00
Report Size (8)	75 08
Usage (Track 1 decode status)	09 20
Usage (Track 2 decode status)	09 21
Usage (Track 3 decode status)	09 22
Usage (Track 1 data length)	09 28
Usage (Track 2 data length)	09 29
Usage (Track 3 data length)	09 2A
Usage (Card encode type)	09 38
Report Count (7)	95 07
Input (Data, Variable, Absolute, Bit Field)	81 02
Usage (Track 1 data)	09 30
Report Count (110)	95 6E
Input (Data, Variable, Absolute, Buffered Bytes)	82 02 01
Usage (Track 2 data)	09 31
Report Count (110)	95 6E
Input (Data, Variable, Absolute, Buffered Bytes)	82 02 01
Usage (Track 3 data)	09 32
Report Count (110)	95 6E

Item	Value (Hex)
Input (Data, Variable, Absolute, Buffered Bytes)	82 02 01
Usage (Command message)	09 20
Report Count (24)	95 18
Feature (Data, Variable, Absolute, Buffered Bytes)	B2 02 01
End Collection	C0

CARD DATA

Card data is only sent to the host on the Interrupt In pipe using an Input Report. The device will send only one Input Report per card swipe. If the host requests data from the device when no data is available, the device will send a Nak to the host to indicate that it has nothing to send. When a card is swiped, the Input Report will be sent even if the data is not decodable. The following table shows how the input report is structured.

Offset	Usage Name
0	Track 1 decode status
1	Track 2 decode status
2	Track 3 decode status
3	Track 1 data length
4	Track 2 data length
5	Track 3 data length
6	Card encode type
7 – 116	Track 1 data
117 – 226	Track 2 data
227 - 336	Track 3 data

TRACK 1 DECODE STATUS

Bits	7-1	0
Value	Reserved	Error

This is a one-byte value, which indicates the status of decoding track 1. Bit position zero indicates if there was an error decoding track 1 if the bit is set to one. If it is zero, then no error occurred. If a track has data on it that is not noise, and it is not decodable, then a decode error is indicated. If a decode error is indicated, the corresponding track data length value for the track that has the error will be set to zero and no valid track data will be supplied.

TRACK 2 DECODE STATUS

Bits	7-1	0
Value	Reserved	Error

This is a one-byte value, which indicates the status of decoding track 2. Bit position zero indicates if there was an error decoding track 2 if this bit is set to one. If it is zero, then no error occurred. If a track has data on it that is not noise, and it is not decodable, then a decode error is indicated. If a decode error is indicated, the corresponding track data length value for the track that has the error will be set to zero and no valid track data will be supplied.

TRACK 3 DECODE STATUS

Bits	7-1	0
Value	Reserved	Error

This is a one-byte value, which indicates the status of decoding track 3. Bit position zero indicates if there was an error decoding track 3 if this bit is set to one. If it is zero, then no error occurred. If a track has data on it that is not noise, and it is not decodable, then a decode error is indicated. If a decode error is indicated, the corresponding track data length value for the track that has the error will be set to zero and no valid track data will be supplied.

TRACK 1 DATA LENGTH

This one-byte value indicates how many bytes of decoded card data are in the track 1 data field. This value will be zero if there was no data on the track or if there was an error decoding the track.

TRACK 2 DATA LENGTH

This one-byte value indicates how many bytes of decoded card data are in the track 2 data field. This value will be zero if there was no data on the track or if there was an error decoding the track.

TRACK 3 DATA LENGTH

This one-byte value indicates how many bytes of decoded card data are in the track 3 data field. This value will be zero if there was no data on the track or if there was an error decoding the track.

CARD ENCODE TYPE

This one-byte value indicates the type of encoding that was found on the card. The following table defines the possible values.

Value	Encode Type	Description
0	ISO/ABA	ISO/ABA encode format
1	AAMVA	AAMVA encode format
2	reserved	
3	Blank	The card is blank.
4	Other	The card has a non-standard encode format. For example, ISO/ABA track 1 format on track 2.
5	Undetermined	The card encode type could not be determined because no tracks could be decoded.
6	None	No decode has occurred. This type occurs if no magnetic stripe data has been acquired since the data has been cleared or since the device was powered on. This device only sends an Input report when a card has been swiped so this value will never occur.

TRACK DATA

If decodable track data exists for a given track, it is located in the track data field that corresponds to the track number. The length of each track data field is fixed at 110 bytes, but the length of valid data in each field is determined by the track data length field that corresponds to the track number. Track data located in positions greater than the track data length field indicates are undefined and should be ignored. The HID specification requires that reports be fixed in size, but the number of bytes encoded on a card may vary. Therefore, the Input Report always contains the maximum amount of bytes that can be encoded on the card and the number of valid bytes in each track is indicated by the track data length field. The track data is decoded and converted to ASCII. The track data includes all data starting with the start sentinel and ending with the end sentinel.

TRACK 1 DATA

This field contains the decoded track data for track 1.

TRACK 2 DATA

This field contains the decoded track data for track 2.

TRACK 3 DATA

This field contains the decoded track data for track 3.

COMMANDS

Most host applications do not need to send commands to the device. Most host applications only need to obtain card data from the device as described previously in this section. This section of the manual can be ignored by anyone who does not need to send commands to the device.

Command requests and responses are sent to and received from the device using feature reports. Command requests are sent to the device using the HID class specific request Set_Report. The response to a command is retrieved from the device using the HID class specific request Get_Report. These requests are sent over the default control pipe. When a command request is sent, the device will Nak the Status stage of the Set_Report request until the command is completed. This insures that, as soon as the Set_Report request is completed, the Get_Report request can be sent to get the command response. The usage ID for the command message was shown previously in the Usage Table.

The following table shows how the feature report is structured for command requests:

Offset	Field Name
0	Command Number
1	Data Length
2 – 23	Data

The following table shows how the feature report is structured for command responses.

Offset	Field Name
0	Result Code
1	Data Length
2 – 23	Data

COMMAND NUMBER

This one-byte field contains the value of the requested command number. The following table lists all the existing commands.

Value	Command Number	Description
0	GET_PROPERTY	Gets a property from the device
1	SET_PROPERTY	Sets a property in the device

DATA LENGTH

This one-byte field contains the length of the valid data contained in the Data field.

DATA

This multi-byte field contains command data if any. Note that the length of this field is fixed at 22 bytes. Valid data should be placed in the field starting at offset 2. Any remaining data after the valid data should be set to zero. This entire field must always be set even if there is no valid data. The HID specification requires that Reports be fixed in length. Command data may vary in length. Therefore, the Report should be filled with zeros after the valid data.

RESULT CODE

This one-byte field contains the value of the result code. There are two types of result codes: generic result codes and command-specific result codes. Generic result codes always have the most significant bit set to zero. Generic result codes have the same meaning for all commands and can be used by any command. Command-specific result codes always have the most significant bit set to one. Command-specific result codes are defined by the command that uses them. The same code can have different meanings for different commands. Command-specific result codes are defined in the documentation for the command that uses them. Generic result codes are defined in the following table.

Value	Result Code	Description
0	SUCCESS	The command completed successfully.
1	FAILURE	The command failed.
2	BAD_PARAMETER	The command failed due to a bad parameter or command syntax error.

GET AND SET PROPERTY COMMANDS

The Get Property command gets a property from the device. The Get Property command number is 0.

The Set Property command sets a property in the device. The Set Property command number is 1.

The Get and Set Property command data fields for the requests and responses are structured as follows:

Get Property Request Data:

Data Offset	Value
0	Property ID

Get Property Response Data:

Data Offset	Value
0 – n	Property Value

Set Property Request Data:

Data Offset	Value
0	Property ID
1 – n	Property Value

Set Property Response Data:

None

The result codes for the Get and Set Property commands can be any of the codes list in the generic result code table.

Property ID is a one-byte field that contains a value that identifies the property. The following table lists all the current property ID values:

Value	Property ID	Description
0	SOFTWARE_ID	The device's software identifier
1	SERIAL_NUM	The device's serial number
2	POLLING_INTERVAL	The interrupt pipe's polling interval

The Property Value is a multiple-byte field that contains the value of the property. The number of bytes in this field depends on the type of property and the length of the property. The following table lists all of the property types and describes them.

Property Type	Description
Byte	This is a one-byte value. The valid values depend on the property.
String	This is a multiple-byte ASCII string. Its length can be zero to a maximum length that depends on the property. The value and length of the string does not include a terminating NUL character.

SOFTWARE_ID PROPERTY

Property ID: 0
Property Type: String
Length: Fixed at 11 bytes
Get Property: Yes
Set Property: No
Description: This is an 11-byte read only property that identifies the software part number and version for the device. The first 8 bytes represent the part number and the last 3 bytes represent the version. For example this string might be "21088835A02". Examples follow:

Example Get SOFTWARE_ID property Request (Hex):

Cmd Num	Data Len	Prp ID
00	01	00

Example Get SOFTWARE_ID property Response (Hex):

Result Code	Data Len	Prp Value
00	01	32 31 30 34 32 38 30 34 41 30 32

SERIAL_NUM PROPERTY

Property ID: 1
 Property Type: String
 Length: 0 – 15 bytes
 Get Property: Yes
 Set Property: Yes
 Default Value: The default value is no string with a length of zero.
 Description: The value is an ASCII string that represents the device's serial number. This string can be 0 – 15 bytes long. This property is stored in non-volatile EEPROM memory so it will not change when the unit is power cycled. The value of this property, if any, will be sent to the host when the host requests the USB string descriptor. When this property is changed, the unit must be power cycled to have these changes take effect for the USB descriptor. If a value other than the default value is desired, it can be set by the factory upon request. Examples follow.

Example Set SERIAL_NUM property Request (Hex):

Cmd Num	Data Len	Prp ID	Prp Value
01	04	01	31 32 33

Example Set SERIAL_NUM property Response (Hex):

Result Code	Data Len	Data
00	00	

Example Get SERIAL_NUM property Request (Hex):

Cmd Num	Data Len	Prp ID
00	01	01

Example Get SERIAL_NUM property Response (Hex):

Result Code	Data Len	Prp Value
00	03	31 32 33

POLLING_INTERVAL PROPERTY

Property ID: 2
 Property Type: Byte
 Length: 1 byte
 Get Property: Yes
 Set Property: Yes
 Default Value: 10
 Description: The value is a byte that represents the devices polling interval for the Interrupt In Endpoint. The value can be set in the range of 1 – 255 and has units of milliseconds. The polling interval tells the host how often to poll the device for card data packets. For example, if the polling interval is set to 10, the host will poll the device for card data packets every 10ms. This property can be used to speed up or slow down the time it takes to send card data to the host. The trade-off is that speeding up the card data transfer rate increases the USB bus bandwidth used by the device, and slowing down the card data transfer

rate decreases the USB bus bandwidth used by the device. This property is stored in non-volatile EEPROM memory so it will not change when the unit is power cycled. The value of this property, if any, will be sent to the host when the host requests the device's USB endpoint descriptor. When this property is changed, the unit must be power cycled to have these changes take effect for the USB descriptor. If a value other than the default value is desired, it can be set by the factory upon request. Examples follow:

Example Set POLLING_INTERVAL property Request (Hex):

Cmd Num	Data Len	Prp ID	Prp Value
01	02	02	0A

Example Set POLLING_INTERVAL property Response (Hex):

Result Code	Data Len	Data
00	00	

Example Get POLLING_INTERVAL property Request (Hex):

Cmd Num	Data Len	Prp ID
00	01	02

Example Get POLLING_INTERVAL property Response (Hex):

Result Code	Data Len	Prp Value
00	01	0A

MAX_PACKET_SIZE PROPERTY

Property ID: 3

Property Type: Byte

Length: 1 byte

Get Property: Yes

Set Property: Yes

Default Value: 8

Description: The value is a byte that represents the devices maximum packet size for the Interrupt In Endpoint. The value can be set in the range of 1 – 64 and has units of bytes. The maximum packet size tells the host the maximum size of the Interrupt In Endpoint packets. For example, if the maximum packet size is set to 8, the device will send HID reports in multiple packets of 8 bytes each or less for the last packet of the report. This property can be used to speed up or slow down the time it takes to send card data to the host. Larger packet sizes speed up communications and smaller packet sizes slow down communications. The trade-off is that speeding up the card data transfer rate increases the USB bus bandwidth used by the device, and slowing down the card data transfer rate decreases the USB bus bandwidth used by the device. This property is stored in non-volatile EEPROM memory so it will not change when the unit is power cycled. The value of this property will be sent to the host when the host requests the device's USB endpoint descriptor. When this property is changed, the unit must be power cycled to have these changes take effect for the USB descriptor. If a value other than the default value is desired, it can be set by the factory upon request. Examples follow:

Example Set MAX_PACKET_SIZE property Request (Hex):

Cmd Num	Data Len	Prp ID	Prp Value
---------	----------	--------	-----------

01	02	03	08
----	----	----	----

Example Set MAX_PACKET_SIZE property Response (Hex):

Result Code	Data Len	Data
00	00	

Example Get MAX_PACKET_SIZE property Request (Hex):

Cmd Num	Data Len	Prp ID
00	01	03

Example Get MAX_PACKET_SIZE property Response (Hex):

Result Code	Data Len	Prp Value
00	01	08

INTERFACE_TYPE PROPERTY

Property ID: 16 (10 hex)

Property Type: Byte

Length: 1 byte

Get Property: Yes

Set Property: Yes

Default Value: 0 (HID)

Description: The value is a byte that represents the devices interface type. The value can be set to 0 for the HID interface or to 1 for the keyboard emulation interface. When the value is set to 0 (HID) the device will behave as described in the HID manual. When the value is set to 1 (keyboard emulation) the device will behave as described in the keyboard emulation manual. This property should be the first property changed because it affects which other properties are available. After this property is changed, the device should be power cycled before changing any other properties. This property is stored in non-volatile EEPROM memory so it will persist when the unit is power cycled. When this property is changed, the unit must be power cycled to have these changes take effect. If a value other than the default value is desired, it can be set by the factory upon request. Examples follow:

Example Set INTERFACE_TYPE property Request (Hex):

Cmd Num	Data Len	Prp ID	Prp Value
01	02	10	00

Example Set INTERFACE_TYPE property Response (Hex):

Result Code	Data Len	Data
00	00	

Example Get INTERFACE_TYPE property Request (Hex):

Cmd Num	Data Len	Prp ID
00	01	10

Example Get INTERFACE_TYPE property Response (Hex):

USB IntelliHead Swipe Reader

Result Code	Data Len	Prp Value
00	01	00

SECTION 5. DEMO PROGRAM

The demo program, which is written in Visual Basic, can be used to do the following:

- Read cards from the device and view the card data
- Send command requests to the device and view the command responses
- Guide application developers in their application development by providing examples, in source code, of how to properly communicate with the device using the standard Windows APIs

The part numbers for the demo program can be found in this document in Section 1 under Accessories.

INSTALLATION

To install the demo program, run the setup.exe file and follow the instructions given on the screen.

OPERATION

To operate the demo program perform the following steps:

- Attach the device to a USB port on the host.
- If this is the first time the device has been plugged into the host, then follow the instructions on the screen for installing the Windows HID device driver. This is explained in more detail in the installation section of this document.
- Run the demo program.
- To read cards and view the card data, click on the Read Cards button and swipe a card when prompted to do so.
- When finished reading cards, close the dialog box.
- To send commands to the device, click on the send commands button.
- Enter a command in the Message edit box. All data entered should be in hexadecimal bytes with a space between each byte. Enter the command number followed by the command data if there is any. The application will automatically calculate and send the command data length for you. For example, to send the GET_PROPERTY command for property SOFTWARE_ID enter 00 00.
- Press Enter or click on Send message to send the command and receive the result.
- The command request and the command result will be displayed in the Communications Dialog edit box.
- The Clear Dialog button clears the Communication Dialog edit box.

SOURCE CODE

Source code is included with the demo program. It can be used as a guide for application development. It is described in detail, with comments, to assist developers. The book *USB Complete* by Jan Axelson is also a good guide for application developers, especially the chapter on Human Interface Device Host Applications (see “Reference Documents” in Section 1).

APPENDIX A. USB INTELLIHEAD SWIPE READER

The following drawing is provided in this section:

Part Number	Title
--------------------	--------------

21030006	USB-HID INTHD 3TK 125MM WRE, 5P CONN
----------	--------------------------------------

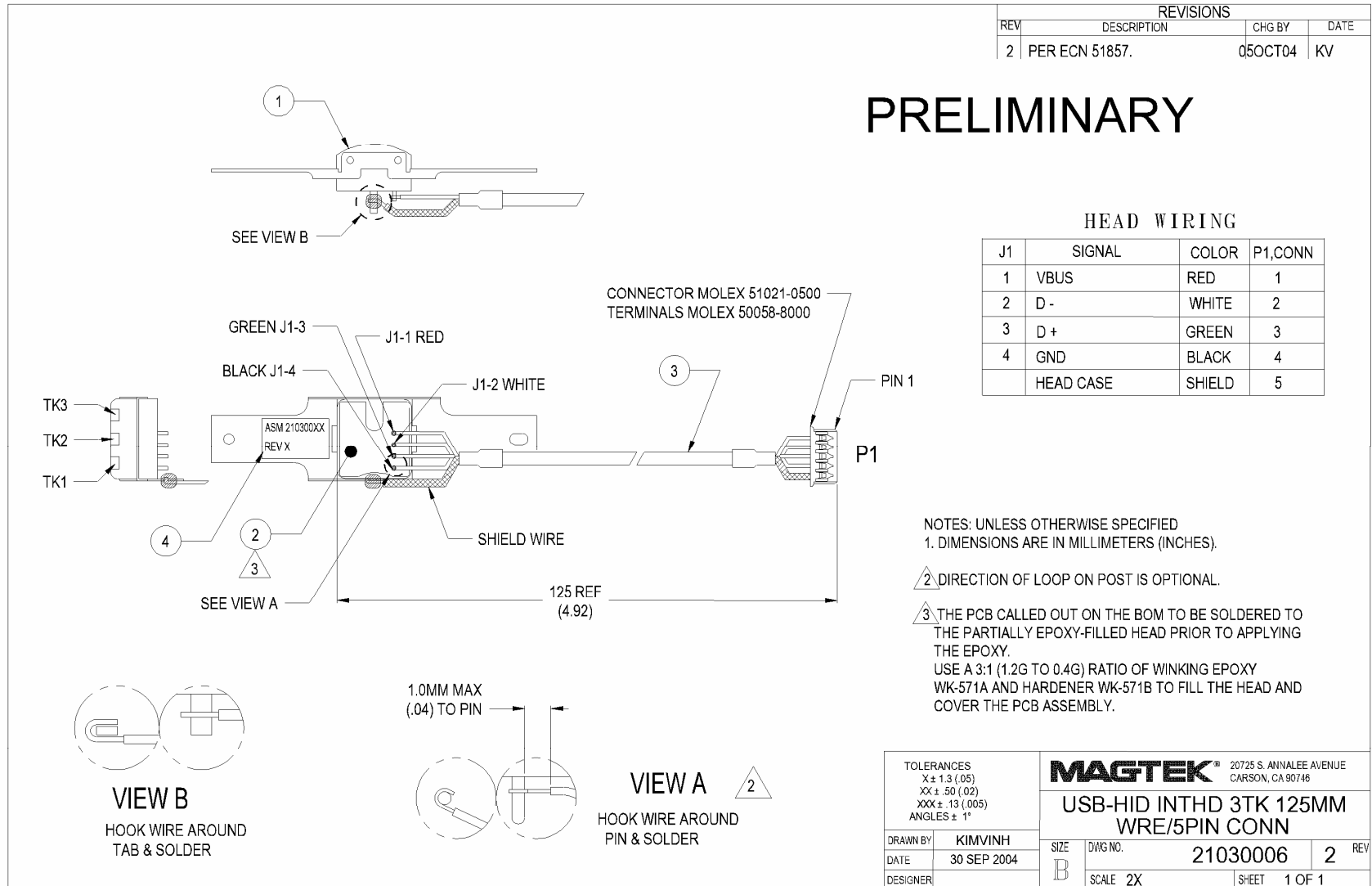


Figure A-1. USB HID IntelliHead, 3-Track, 125mm Wire, 5-Pin Connector

Preliminary to Rev 1 10/20/2004 7:30:02 AM

USB INTELLIHEAD KEYBOARD EMULATION FOR SWIPE READERS TECHNICAL REFERENCE MANUAL

Manual Part Number 99875321-1P

OCTOBER 2004

PRELIMINARY

MAGTEK[®]

REGISTERED TO ISO 9001:2000

20725 South Annalee Avenue

Carson, CA 90746

Phone: (310) 631-8602

FAX: (310) 631-3956

Technical Support: (651) 415-6800

www.magtek.com

Copyright© 2004
MagTek®, Inc.
Printed in the United States of America

Information in this document is subject to change without notice. No part of this document may be reproduced or transmitted in any form or by any means, electronic or mechanical, for any purpose, without the express written permission of MagTek, Inc.

MagTek is a registered trademark of MagTek, Inc.

USB (Universal Serial Bus) Specification is Copyright© 1998 by Compaq Computer Corporation, Intel Corporation, Microsoft Corporation, NEC Corporation.

REVISIONS

Rev Number	Date	Notes
1	XX Oct 04	Initial Release

Limited Warranty

MagTek, Inc. warrants that the Product described in this document is free of defects in materials and workmanship for a period of one year from the date of purchase where the date of purchase is defined as the date of shipment from MagTek. During this warranty period, MagTek shall, at their option, repair or replace without charge for either parts or labor, any failure, malfunction, defect or nonconformity which prevents the product from performing in accordance with MagTek's published technical specifications and manuals.

This warranty does not apply to wear of the magnetic read head. This warranty shall not apply if the product is modified, tampered with, or subject to abnormal working conditions. This warranty does not apply when the malfunction results from the use of the Product in conjunction with ancillary or peripheral equipment where it is determined by MagTek that there is no fault in the Product itself.

Notification by the Customer to MagTek of any condition described above should be directed to the Customer's MagTek Sales Representative or to MagTek's Help Desk at (651) 415-6800. If the Product is to be returned from the Customer to MagTek, a returned material authorization (RMA) will be issued by MagTek. The Customer shall be responsible for shipping charges to MagTek, (20801 S. Annalee Ave., Carson, CA 90746). MagTek shall be responsible for shipping charges back to the Customer.

Repair or replacement as provided under this warranty is the exclusive remedy. This warranty is in lieu of all other warranties, express or implied.

FCC WARNING STATEMENT

This equipment has been tested and found to comply with the limits for Class B digital device, pursuant to Part 15 of FCC Rules. These limits are designed to provide reasonable protection against harmful interference when the equipment is operated in a residential environment. This equipment generates, uses, and can radiate radio frequency energy and, if not installed and used in accordance with the instruction manual, may cause harmful interference to radio communications. However, there is no guarantee that interference will not occur in a particular installation.

FCC COMPLIANCE STATEMENT

This device complies with Part 15 of the FCC Rules. Operation of this device is subject to the following two conditions: (1) This device may not cause harmful interference; and (2) this device must accept any interference received, including interference that may cause undesired operation.

CANADIAN DOC STATEMENT

This digital apparatus does not exceed the Class B limits for radio noise for digital apparatus set out in the Radio Interference Regulations of the Canadian Department of Communications.

Le présent appareil numérique n'émet pas de bruits radioélectriques dépassant les limites applicables aux appareils numériques de la classe B prescrites dans le Règlement sur le brouillage radioélectrique édicté par le ministère des Communications du Canada.

CE STANDARDS

Testing for compliance to CE requirements was performed by an independent laboratory. The unit under test was found compliant to Class B.

UL/CSA

This product is recognized per Underwriter Laboratories and Canadian Underwriter Laboratories 1950.

TABLE OF CONTENTS

SECTION 1. FEATURES AND SPECIFICATIONS	1
FEATURES.....	1
HARDWARE CONFIGURATIONS.....	1
ACCESSORIES.....	2
REFERENCE DOCUMENTS.....	2
SPECIFICATIONS.....	3
SECTION 2. INSTALLATION	5
USB CONNECTION.....	5
WINDOWS PLUG AND PLAY SETUP.....	5
MOUNTING.....	5
SECTION 3. OPERATION	7
CARD READ.....	7
SECTION 4. USB COMMUNICATIONS	9
HOST APPLICATIONS.....	9
CARD DATA.....	9
PROGRAMMABLE CONFIGURATION OPTIONS.....	11
LOW LEVEL COMMUNICATIONS.....	11
HID USAGES.....	11
REPORT DESCRIPTOR.....	12
COMMANDS.....	13
COMMAND NUMBER.....	13
DATA LENGTH.....	13
DATA.....	13
RESULT CODE.....	14
GET AND SET PROPERTY COMMANDS.....	14
SOFTWARE_ID PROPERTY.....	15
SERIAL_NUM PROPERTY.....	16
POLLING_INTERVAL PROPERTY.....	16
TRACK_ID_ENABLE PROPERTY.....	17
TRACK_DATA_SEND_FLAGS PROPERTY.....	18
TERMINATION_CHAR PROPERTY.....	19
SS_TK2_7BITS PROPERTY.....	19
SS_TK3_ISO_ABA PROPERTY.....	20
SS_TK3_AAMVA PROPERTY.....	20
SS_TK3_7BITS PROPERTY.....	20
PRE_CARD_CHAR PROPERTY.....	21
POST_CARD_CHAR PROPERTY.....	21
PRE_TK_CHAR PROPERTY.....	22
POST_TK_CHAR PROPERTY.....	22
ASCII_TO_KEYPRESS_CONVERSION_TYPE PROPERTY.....	22
INTERFACE_TYPE PROPERTY.....	23
SECTION 5. DEMO PROGRAM	25
INSTALLATION.....	25
OPERATION.....	25
SOURCE CODE.....	26
APPENDIX A. USB INTELLIHEAD SWIPE READER	27

FIGURES

Figure 1-1. 3-Track USB Keyboard Emulation IntelliHead	vi
--	----

TABLES

Table 1-2. Specifications.....	3
Table 2-1. 4-Pin Connector.....	5

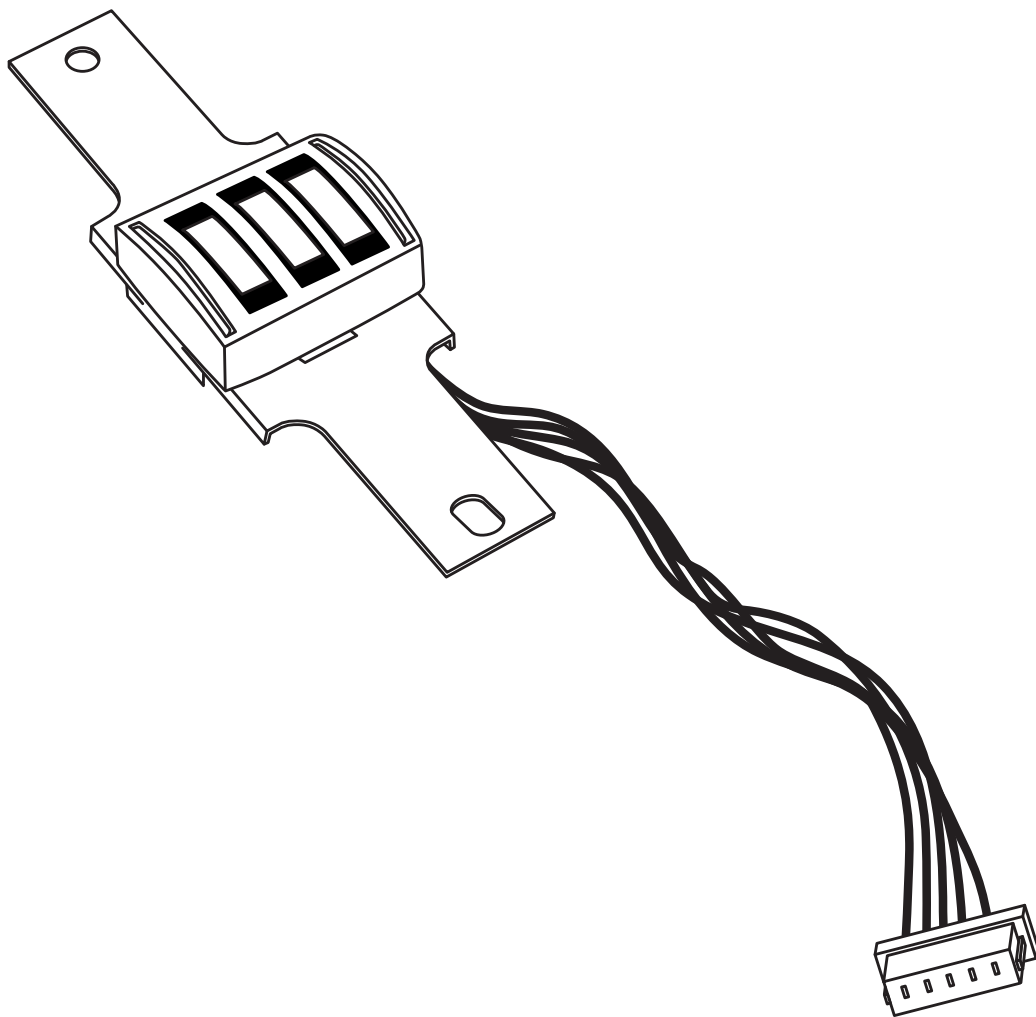


Figure 1-1. 3-Track USB Keyboard Emulation IntelliHead

SECTION 1. FEATURES AND SPECIFICATIONS

The USB (Universal Serial Bus), HID Keyboard Emulation, Swipe Reader is a compact magnetic stripe card reader, which conforms to ISO standards. The Reader is compatible with the PC series of personal computers and emulates the operation of a keyboard. A card is read by sliding it past the head either forward or backward.

The reader emulates a USB Human Interface Device (HID) United States keyboard or optionally all international keyboards using ALT ASCII code keypad key combinations. This allows host applications designed to acquire card data from keyboard input to seamlessly acquire the card data from the USB swipe reader.

Caution

If another keyboard is connected to the same host as this device and a key is pressed on the other keyboard while this device is transmitting, then the data transmitted by this device may get corrupted.

Because of potential "data interleave" issues associated with the USB Keyboard interface, MagTek recommends that the USB Keyboard Emulation MSR product should only be used if the application requires magnetic stripe data to be provided via the keyboard input. If previous applications were based upon RS-232 serial interface MSR's, or if this is a brand new development effort, it is strongly recommended that you use the MagTek's USB IntelliHead product. Please refer to Technical Manual 99875320 for further information regarding the USB IntelliHead.

FEATURES

Major features of the Swipe Reader are as follows:

- Powered through the USB – no external power supply required
- Hardware Compatible with PC or any computer or terminal with a USB interface
- Bidirectional card reading
- Reads encoded data that meets ANSI/ISO/AAMVA standards and others such as ISO track 1 format on track 2 or 3.
- Reads up to three tracks of card data
- Compatible with USB specification Revision 1.1
- Compatible with HID specification Version 1.1
- Can use standard Windows HID drivers for communications. No third part device driver is required.
- Many programmable configuration options
- Non-volatile flash EEPROM memory for configuration storage

HARDWARE CONFIGURATIONS

The hardware configurations are shown in Table 1-1.

Table 1-1. Configurations

Part Number	Description	Cable Length and Connector type	Drawing In
21030007	USB KB IntelliHead 3 tracks	125mm, 5 pin Molex	Appendix A

ACCESSORIES

The accessories are as follows:

Part Number	Description
21042806	USB MSR Demo Program with Source Code (Diskette)
99510026	USB MSR Demo Program with Source Code (WEB)

REFERENCE DOCUMENTS

MagTek *Magnetic Card Reader Design Kit Technical Specification* (99821002)

Axelson, Jan. *USB Complete, Everything You Need to Develop Custom USB Peripherals*, 1999. Lakeview Research, 2209 Winnebago St., Madison WI 53704, 396pp., <http://www.lvr.com>.

USB Human Interface Device (HID) Class Specification Version 1.1.

USB (Universal Serial Bus) Specification, Version 1.1, Copyright 1998 by Compaq Computer Corporation, Intel Corporation, Microsoft Corporation, NEC Corporation.

USB Implementers Forum, Inc., www.usb.org.

SPECIFICATIONS

Table 1-2 lists the specifications for the USB IntelliHead. Figure 1-2 shows the dimensions for the standard product.

Table 1-2. Specifications

Reference Standards	ISO 7810 and ISO 7811 and AAMVA*
Power Input	5V From USB bus
Recording Method	Two-frequency coherent phase (F2F)
Message Format	ASCII
Card Speed	3 to 50 IPS
MTBF	Electronics: 125,000 hours. Head: 1,000,000 passes

ELECTRICAL

Current Normal Mode Suspend Mode	15mA 200 μ A
--	---------------------

MECHANICAL (STANDARD PRODUCT)

Weight	
Cable length	See Table 1-1
Connector	See Table 1-1

ENVIRONMENTAL

Temperature	
Operating	-40 °C to +70 °C (-40 °F to 158 °F)
Storage	-40 °C to +70 °C (-40 °F to 158 °F)
Humidity	
Operating	10% to 90% noncondensing
Storage	Up to 90% noncondensing
Altitude	
Operating	0-10,000 ft. (0-3048 m.)
Storage	0-50,000 ft. (0-15240 m.)

* ISO (International Standards Organization) and AAMVA (American Association of Motor Vehicle Administrators).

SECTION 2. INSTALLATION

This section describes the cable connection, the Windows Plug and Play Setup, and the physical mounting of the unit.

USB CONNECTION

Since the USB IntelliHead is supplied as an OEM product, the installation and system integration will be unique for each application. The reader module must be attached to an appropriate connector which, in turn, connects to the USB hub. The pin numbers for the 5-pin connector are shown in Figure 2-1.

Pin numbers and signal descriptions for the cable shown in the illustration are listed in Table 2-1.

Table 2-1. 5-Pin Connector

Pin Number	Signal	Cable Color
1	VBUS	Red
2	- Data	White
3	+Data	Green
4	Ground	Black
5	Head Case	Brown

WINDOWS PLUG AND PLAY SETUP

On hosts with the Windows operating system, the first time the device is plugged into a specific USB port, Windows will pop up a dialog box, which will guide you through the process of installing a device driver for the device. After this process is completed once, Windows will no longer request this process as long as the device is plugged into the same USB port. The device driver that Windows will install for this device is the driver used for HID keyboard devices and it is part of the Windows operating system. When the dialog box pops up, follow the instructions in the dialog box. Sometimes Windows will find all the files it needs on its own without giving any prompts. Other times Windows will need to know the location of the files it needs. If Windows prompts for the file locations, insert the CD that was used to install Windows on your PC and point Windows to the root directory of the CD. Windows should find all the files it needs there.

MOUNTING

Refer to the appropriate Appendix in this document and/or to the *Magnetic Card Reader Design Kit* for complete mounting details.

SECTION 3. OPERATION

CARD READ

A card may be swiped past the read head at any time. The magnetic stripe must face toward the head and may be swiped in either direction. If there is data encoded on the card, the device will attempt to decode the data and then send the results to the host via a USB HID input report. After the results are sent to the host, the device will be ready to read the next card.

SECTION 4. USB COMMUNICATIONS

This device conforms to the USB specification revision 1.1. This device also conforms with the Human Interface Device (HID) class specification version 1.1. The device communicates to the host as a HID keyboard device. The latest versions of the Windows operating systems come with a standard Windows USB HID keyboard driver.

This is a full speed USB device. This device has a number of programmable configuration properties. These properties are stored in non-volatile EEPROM memory. These properties can be configured at the factory or by the end user. The device has an adjustable endpoint descriptor polling interval value that can be set to any value in the range of 1ms to 255ms. This property can be used to speed up or slow down the card data transfer rate. The device also has an adjustable serial number descriptor. More details about these properties can be found later in this document in the command section.

The device will go into suspend mode when directed to do so by the host. The device will wakeup from suspend mode when directed to do so by the host. The device does not support remote wakeup.

This device is powered from the USB bus. Its vendor ID is 0x0801 and its product ID is 0x0001.

HOST APPLICATIONS

This device can be used with existing applications that acquire card data via keyboard input. Also, applications that communicate to this device can be easily developed. These applications can be developed using compilers such as Microsoft's Visual Basic or Visual C++. To demonstrate this device's card reading capabilities any application that accepts keyboard input such as Window's Notepad can be used.

CARD DATA

The card data is converted to ASCII and transmitted to the host as if it had been typed on a keyboard. Any data with ASCII values 0 – 31 or 127 will be transmitted as their equivalent control code combination. For example a carriage return value 13 (0D hex) will be sent as (^M) where ^ represents the Ctrl key on the keyboard.

Caution

If another keyboard is connected to the same host as this device and a key is pressed on the other keyboard while this device is transmitting, then the data transmitted by this device may get corrupted.

Because of potential "data interleave" issues associated with the USB Keyboard interface, MagTek recommends that the USB Keyboard Emulation MSR product should only be used by customers who have previously used MagTek's Keyboard Wedge MSR, or who are interfacing with an existing PC software application which gathers card data from the keyboard port. If previous applications were based upon RS-232 serial interface MSR's, or if this is a brand new development effort, it is strongly recommended that you use the MagTek's USB IntelliHead

USB HID Keyboard Emulation Swipe Reader

MSR (Non-Keyboard Emulation Version). Please refer to Technical Manual 99875320 for further information regarding the USB IntelliHead HID reader.

The device's programmable configuration options affect the format of the card data.

The card data format for the default configuration is as follows:

[Tk1 SS] [Tk1 Data] [ES] [Tk2 SS] [Tk2 Data] [ES] [Tk3 SS] [Tk3 Data] [ES] [CR]

where:

Tk1 SS = % (7-bit start sentinel)
Tk2 SS = ; (ISO/ABA 5-bit start sentinel)
 @ (7-bit start sentinel)
Tk3 SS = + (ISO/ABA start sentinel)
 # (AAMVA start sentinel)
 & (7-bit start sentinel)
ES = ? (end sentinel)
CR = (carriage return) (0D hex)

All data will be sent in upper case regardless of the state of the caps lock key on the keyboard. If no data is detected on a track then nothing will be transmitted for that track. If an error is detected on a track the ASCII character E will be sent in place of the track data to indicate an error.

The card data format for all programmable configuration options is as follows:

[P11] [P13] [Tk1 SS] [Tk1 Data] [ES] [LRC] [P14] [P5] [P13] [Tk2 SS] [Tk2 Data] [ES]
[LRC] [P14] [P5] [P13] [Tk3 SS] [Tk3 Data] [ES] [LRC] [P14] [P5] [P12]

where:

ES = ? (end sentinel)
LRC = Longitudinal redundancy check character
P5 = Terminating character
P11 = Pre card character
P12 = Post card character
P13 = Pre track character
P14 = Post track character
Tk1 SS = % (7-bit start sentinel)
Tk2 SS = ; (ISO/ABA 5-bit start sentinel)
 P6 (7-bit start sentinel)
Tk3 SS = P8 (ISO/ABA start sentinel)
 P9 (AAMVA start sentinel)
 P10 (7-bit start sentinel)

All fields with the format P# are programmable configuration property numbers. They are described in detail later in this document.

PROGRAMMABLE CONFIGURATION OPTIONS

This device has a number of programmable configuration properties. These properties are stored in non-volatile EEPROM memory. These properties can be configured at the factory or by the end user using a program supplied by MagTek. Programming these parameters requires low level communications with the device. During normal device operation, the device acts like a USB HID keyboard so the host operating system takes care of all low level communications with the device so that the application developer is not burdened with these low level details. Details on how to communicate with the device to change programmable configuration properties follows in the next few sections. These details are included as a reference only. Most users will not need to know these details because the device will be configured at the factory or by a program supplied by MagTek. Most users may want to skip over the next few sections on low level communications and continue with the details of the configuration properties.

LOW LEVEL COMMUNICATIONS

It is strongly recommended that application software developers become familiar with the HID specification the USB specification before attempting to communicate directly with this device. This document assumes that the reader is familiar with these specifications. These specifications can be downloaded free from www.usb.org.

HID USAGES

HID devices send data in reports. Elements of data in a report are identified by unique identifiers called usages. The structure of the device's reports and the device's capabilities are reported to the host in a report descriptor. The host usually gets the report descriptor only once, right after the device is plugged in. The report descriptor usages identify the devices capabilities and report structures. For example, a device could be identified as a keyboard by analyzing the device's report descriptor. Usages are four byte integers. The most significant two bytes are called the usage page and the least significant two bytes are called usage IDs. Usages that are related can share a common usage page. Usages can be standardized or they can be vendor defined. Standardized usages such as usages for mice and keyboards can be found in the HID Usage Tables document and can be downloaded free at www.usb.org. Vendor defined usages must have a usage page in the range 0xff00 – 0xffff. All usages for this device use the standard HID keyboard usages or vendor defined magnetic stripe reader usage page 0xff00. The vendor defined usage IDs for this device are defined in the following table. The usage types are also listed. These usage types are defined in the HID Usage Tables document.

Magnetic Stripe Reader usage page 0xff00:

Usage ID (Hex)	Usage Name	Usage Type	Report Type
20	Command message	Data	Feature

REPORT DESCRIPTOR

The HID report descriptor is structured as follows:

Item	Value(Hex)
Usage Page (Generic Desktop)	05 01
Usage (Keyboard)	09 06
Collection (Application)	A1 01
Usage Page (Key Codes)	05 07
Usage Minimum (224)	19 E0
Usage Maximum (231)	29 E7
Logical Minimum (0)	15 00
Logical Maximum (1)	25 01
Report Size (1)	75 01
Report Count (8)	95 08
Input (Data, Variable, Absolute)	81 02
Report Count (1)	95 01
Report Size (8)	75 08
Input (Constant)	81 03
Report Count (5)	95 05
Report Size (1)	75 01
Usage Page (LEDs)	05 08
Usage Minimum (1)	19 01
Usage Maximum (5)	29 05
Output (Data, Variable, Absolute)	91 02
Report Count (1)	95 01
Report Size (3)	75 03
Output (Constant)	91 03
Report Count (6)	95 06
Report Size (8)	75 08
Logical Minimum (0)	15 00
Logical Maximum (101)	25 66
Usage Page (Key Codes)	05 07
Usage Minimum (0)	19 00
Usage Maximum (101)	29 66
Input (Data, Array)	81 00
Logical Maximum (255)	26 FF 00
Usage Page (vendor defined (MSR))	06 00 FF
Usage (command data)	09 20
Report Count	95 18
Feature (Data, Variable, Absolute, Buffered Bytes)	B2 02 01
End Collection	C0

COMMANDS

Command requests and responses are sent to and received from the device using feature reports. Command requests are sent to the device using the HID class specific request Set_Report. The response to a command is retrieved from the device using the HID class specific request Get_Report. These requests are sent over the default control pipe. When a command request is sent, the device will Nak the Status stage of the Set_Report request until the command is completed. This insures that as soon as the Set_Report request is completed, the Get_Report request can be sent to get the command response. The usage ID for the command message was shown previously in the Usage Table.

The following table shows how the feature report is structured for command requests:

Offset	Field Name
0	Command Number
1	Data Length
2 – 23	Data

The following table shows how the feature report is structured for command responses.

Offset	Field Name
0	Result Code
1	Data Length
2 – 23	Data

COMMAND NUMBER

This one-byte field contains the value of the requested command number. The following table lists all the existing commands.

Value	Command Number	Description
0	GET_PROPERTY	Gets a property from the device
1	SET_PROPERTY	Sets a property in the device

DATA LENGTH

This one-byte field contains the length of the valid data contained in the Data field.

DATA

This multi-byte field contains command data if any. Note that the length of this field is fixed at 22 bytes. Valid data should be placed in the field starting at offset 2. Any remaining data after the valid data should be set to zero. This entire field must always be set even if there is no valid data. The HID specification requires that Reports be fixed in length. Command data may vary in length. Therefore, the Report should be filled with zeros after the valid data.

RESULT CODE

This one-byte field contains the value of the result code. There are two types of result codes: generic result codes and command-specific result codes. Generic result codes always have the most significant bit set to zero. Generic result codes have the same meaning for all commands and can be used by any command. Command-specific result codes always have the most significant bit set to one. Command-specific result codes are defined by the command that uses them. The same code can have different meanings for different commands. Command-specific result codes are defined in the documentation for the command that uses them. Generic result codes are defined in the following table.

Value	Result Code	Description
0	SUCCESS	The command completed successfully.
1	FAILURE	The command failed.
2	BAD_PARAMETER	The command failed due to a bad parameter or command syntax error.

GET AND SET PROPERTY COMMANDS

The Get Property command gets a property from the device. The Get Property command number is 0.

The Set Property command sets a property in the device. The Set Property command number is 1.

The Get and Set Property command data fields for the requests and responses are structured as follows:

Get Property Request Data:

Data Offset	Value
0	Property ID

Get Property Response Data:

Data Offset	Value
0 – n	Property Value

Set Property Request Data:

Data Offset	Value
0	Property ID
1 – n	Property Value

Set Property Response Data:

None

The result codes for the Get and Set Property commands can be any of the codes list in the generic result code table.

Property ID is a one-byte field that contains a value that identifies the property. The following table lists all the current property ID values:

Value	Property ID	Description
0	SOFTWARE_ID	The device's software identifier
1	SERIAL_NUM	The device's serial number
2	POLLING_INTERVAL	The interrupt pipe's polling interval
3	TRACK_ID_ENABLE	Track enable / ID enable
4	TRACK_DATA_SEND_FLAGS	Track data send flags
5	TERMINATION_CHAR	Terminating char / per track or card flag
6	SS_TK2_7BITS	Start sentinel char for track 2 – 7 bit data
7	Reserved for future use	
8	SS_TK3_ISO_ABA	Start sentinel char for track 3 – ISO/ABA
9	SS_TK3_AAMVA	Start sentinel char for track 3 - AAMVA
10	SS_TK3_7BITS	Start sentinel char for track 3 – 7 bit data
11	PRE_CARD_CHAR	Pre card char
12	POST_CARD_CHAR	Post card char
13	PRE_TK_CHAR	Pre track char
14	POST_TK_CHAR	Post track char

The Property Value is a multiple-byte field that contains the value of the property. The number of bytes in this field depends on the type of property and the length of the property. The following table lists all of the property types and describes them.

Property Type	Description
Byte	This is a one-byte value. The valid values depend on the property.
String	This is a multiple byte ASCII string. Its length can be zero to a maximum length that depends on the property. The value and length of the string does not include a terminating NUL character.

SOFTWARE_ID PROPERTY

Property ID: 0
 Property Type: String
 Length: Fixed at 11 bytes
 Get Property: Yes
 Set Property: No
 Description: This is an 11 byte read only property that identifies the software part number and version for the device. The first 8 bytes represent the part number and the last 3 bytes represent the version. For example this string might be “21088837A05”. Examples follow:

Example Get SOFTWARE_ID property Request (Hex):

Cmd Num	Data Len	Prp ID
00	01	00

Example Get SOFTWARE_ID property Response (Hex):

Result Code	Data Len	Prp Value
00	01	32 31 30 34 32 38 30 32 41 30 35

SERIAL_NUM PROPERTY

Property ID: 1
 Property Type: String
 Length: 0 – 15 bytes
 Get Property: Yes
 Set Property: Yes
 Default Value: The default value is no string with a length of zero.
 Description: The value is an ASCII string that represents the device’s serial number. This string can be 0 – 15 bytes long. This property is stored in non-volatile EEPROM memory so it will not change when the unit is power cycled. The value of this property, if any, will be sent to the host when the host requests the USB string descriptor. When this property is changed, the unit must be power cycled to have these changes take effect for the USB descriptor. If a value other than the default value is desired, it can be set by the factory upon request. Examples follow.

Example Set SERIAL_NUM property Request (Hex):

Cmd Num	Data Len	Prp ID	Prp Value
01	04	01	31 32 33

Example Set SERIAL_NUM property Response (Hex):

Result Code	Data Len	Data
00	00	

Example Get SERIAL_NUM property Request (Hex):

Cmd Num	Data Len	Prp ID
00	01	01

Example Get SERIAL_NUM property Response (Hex):

Result Code	Data Len	Prp Value
00	03	31 32 33

POLLING_INTERVAL PROPERTY

Property ID: 2
 Property Type: Byte
 Length: 1 byte
 Get Property: Yes
 Set Property: Yes
 Default Value: 10
 Description: The value is a byte that represents the devices polling interval for the Interrupt In Endpoint. The value can be set in the range of 1 – 255 and has units of milliseconds. The polling interval tells the host how often to poll the device for card data packets. For example, if the polling interval is set to 10, the host will poll the device for card data packets every 10ms. This property can be used to speed up or slow down the time it takes to send card data to the host. The trade-off is that speeding up the card data transfer rate increases the USB

bus bandwidth used by the device, and slowing down the card data transfer rate decreases the USB bus bandwidth used by the device. This property is stored in non-volatile EEPROM memory so it will not change when the unit is power cycled. The value of this property, if any, will be sent to the host when the host requests the device's USB endpoint descriptor. When this property is changed, the unit must be power cycled to have these changes take effect for the USB descriptor. If a value other than the default value is desired, it can be set by the factory upon request. Examples follow:

Example Set POLLING_INTERVAL property Request (Hex):

Cmd Num	Data Len	Prp ID	Prp Value
01	02	02	0A

Example Set POLLING_INTERVAL property Response (Hex):

Result Code	Data Len	Data
00	00	

Example Get POLLING_INTERVAL property Request (Hex):

Cmd Num	Data Len	Prp ID
00	01	02

Example Get POLLING_INTERVAL property Response (Hex):

Result Code	Data Len	Prp Value
00	01	0A

TRACK_ID_ENABLE PROPERTY

Property ID: 3
 Property Type: Byte
 Length: 1 byte
 Get Property: Yes
 Set Property: Yes
 Default Value: 95 (hex)
 Description: This property is defined as follows:

id	0	T ₃	T ₃	T ₂	T ₂	T ₁	T ₁
----	---	----------------	----------------	----------------	----------------	----------------	----------------

Id 0 – Decodes standard ISO/ABA cards only
 1 – Decodes AAMVA, CA DL/ID and 7-bit cards also

T_# 00 – Track Disabled
 01 – Track Enabled
 10 – Track Enabled/Required (Error if blank)

This property is stored in non-volatile EEPROM memory so it will not change when the unit is power cycled. When this property is changed, the unit must be power cycled to have these changes take effect. If a value other than the default value is desired, it can be set by the factory upon request.

TRACK_DATA_SEND_FLAGS PROPERTY

Property ID: 4
 Property Type: Byte
 Length: 1 byte
 Get Property: Yes
 Set Property: Yes
 Default Value: 63 (hex)
 Description: This property is defined as follows:

0	SS	ES	LRC	0	LC	Er	Er
---	----	----	-----	---	----	----	----

SS 0 – Don’t send Start Sentinel for each track
 1 – Send Start Sentinel for each track

ES 0 – Don’t send End Sentinel for each track
 1 – Send End Sentinel for each track

LRC 0 – Don’t send LRC for each track
 1 – Send LRC for each track

Note that the LRC is the unmodified LRC from the track data. To verify the LRC the track data needs to be converted back from ASCII to card data format and the start sentinels that were modified to indicate the card encode type need to be converted back to their original values.

LC 0 – Send card data as upper case
 1 – Send card data as lower case

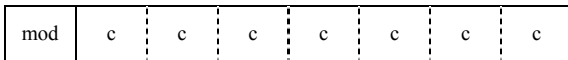
Note that the state of the Caps Lock key on the host keyboard has no affect on what case the card data is transmitted in.

Er 00 – Don’t send any card data if error
 01 – Don’t send track data if error
 11 – Send ‘E’ for each track error

This property is stored in non-volatile EEPROM memory so it will not change when the unit is power cycled. When this property is changed, the unit must be power cycled to have these changes take effect. If a value other than the default value is desired, it can be set by the factory upon request.

TERMINATION_CHAR PROPERTY

Property ID: 5
 Property Type: Byte
 Length: 1 byte
 Get Property: Yes
 Set Property: Yes
 Default Value: 0D (hex) (carriage return)
 Description: This property is defined as follows:



- mod 0 – Send c after card data
 1 – Send c after each track

- c 1-127 – 7 bit ASCII char code
 0 – send nothing

This property is stored in non-volatile EEPROM memory so it will not change when the unit is power cycled. When this property is changed, the unit must be power cycled to have these changes take effect. If a value other than the default value is desired, it can be set by the factory upon request.

SS_TK2_7BITS PROPERTY

Property ID: 6
 Property Type: Byte
 Length: 1 byte
 Get Property: Yes
 Set Property: Yes
 Default Value: 40 (hex) '@'
 Description: This character is sent as the track 2 start sentinel for cards that have track 2 encoded in 7 bits per character format. If the value is 0 no character is sent. If the value is in the range 1 – 127 then the equivalent ASCII character will be sent.

This property is stored in non-volatile EEPROM memory so it will not change when the unit is power cycled. When this property is changed, the unit must be power cycled to have these changes take effect. If a value other than the default value is desired, it can be set by the factory upon request.

SS_TK3_ISO_ABA PROPERTY

Property ID: 8
Property Type: Byte
Length: 1 byte
Get Property: Yes
Set Property: Yes
Default Value: 2B (hex) '+'
Description: This character is sent as the track 3 start sentinel for cards that have track 3 encoded in ISO/ABA format. If the value is 0 no character is sent. If the value is in the range 1 – 127 then the equivalent ASCII character will be sent.

This property is stored in non-volatile EEPROM memory so it will not change when the unit is power cycled. When this property is changed, the unit must be power cycled to have these changes take effect. If a value other than the default value is desired, it can be set by the factory upon request.

SS_TK3_AAMVA PROPERTY

Property ID: 9
Property Type: Byte
Length: 1 byte
Get Property: Yes
Set Property: Yes
Default Value: 23 (hex) '#'
Description: This character is sent as the track 3 start sentinel for cards that have track 3 encoded in AAMVA format. If the value is 0 no character is sent. If the value is in the range 1 – 127 then the equivalent ASCII character will be sent.

This property is stored in non-volatile EEPROM memory so it will not change when the unit is power cycled. When this property is changed, the unit must be power cycled to have these changes take effect. If a value other than the default value is desired, it can be set by the factory upon request.

SS_TK3_7BITS PROPERTY

Property ID: 10 (0A hex)
Property Type: Byte
Length: 1 byte
Get Property: Yes
Set Property: Yes
Default Value: 26 (hex) '&'
Description: This character is sent as the track 3 start sentinel for cards that have track 3 encoded in 7 bits per character format. If the value is 0 no character is sent. If the value is in the range 1 – 127 then the equivalent ASCII character will be sent.

This property is stored in non-volatile EEPROM memory so it will not change when the unit is power cycled. When this property is changed, the unit must be power cycled to have these changes take effect. If a value other than the default value is desired, it can be set by the factory upon request.

PRE_CARD_CHAR PROPERTY

Property ID: 11 (0B hex)
Property Type: Byte
Length: 1 byte
Get Property: Yes
Set Property: Yes
Default Value: 0
Description: This character is sent prior to all other card data. If the value is 0 no character is sent. If the value is in the range 1 – 127 then the equivalent ASCII character will be sent.

This property is stored in non-volatile EEPROM memory so it will not change when the unit is power cycled. When this property is changed, the unit must be power cycled to have these changes take effect. If a value other than the default value is desired, it can be set by the factory upon request.

POST_CARD_CHAR PROPERTY

Property ID: 12 (0C hex)
Property Type: Byte
Length: 1 byte
Get Property: Yes
Set Property: Yes
Default Value: 0
Description: This character is sent after all other card data. If the value is 0 no character is sent. If the value is in the range 1 – 127 then the equivalent ASCII character will be sent.

This property is stored in non-volatile EEPROM memory so it will not change when the unit is power cycled. When this property is changed, the unit must be power cycled to have these changes take effect. If a value other than the default value is desired, it can be set by the factory upon request.

PRE_TK_CHAR PROPERTY

Property ID: 13 (0D hex)
Property Type: Byte
Length: 1 byte
Get Property: Yes
Set Property: Yes
Default Value: 0
Description: This character is sent prior to the data for each track. If the value is 0 no character is sent. If the value is in the range 1 – 127 then the equivalent ASCII character will be sent.

This property is stored in non-volatile EEPROM memory so it will not change when the unit is power cycled. When this property is changed, the unit must be power cycled to have these changes take effect. If a value other than the default value is desired, it can be set by the factory upon request.

POST_TK_CHAR PROPERTY

Property ID: 14 (0E hex)
Property Type: Byte
Length: 1 byte
Get Property: Yes
Set Property: Yes
Default Value: 0
Description: This character is sent after the data for each track. If the value is 0 no character is sent. If the value is in the range 1 – 127 then the equivalent ASCII character be sent.

This property is stored in non-volatile EEPROM memory so it will not change when the unit is power cycled. When this property is changed, the unit must be power cycled to have these changes take effect. If a value other than the default value is desired, it can be set by the factory upon request.

ASCII_TO_KEYPRESS_CONVERSION_TYPE PROPERTY

Property ID: 15 (0F hex)
Property Type: Byte
Length: 1 byte
Get Property: Yes
Set Property: Yes
Default Value: 0 (keymap)
Description: The value is a byte that represents the devices ASCII to keypress conversion type. The value can be set to 0 for keymap (United states keyboard emulation) or to 1 for ALT ASCII code (international keyboard emulation). When the value is set to 0 (keymap), data will be transmitted to the host

according to a United States keyboard keymap. For example, to transmit the ASCII character ‘?’ (063 decimal), the character is looked up in a keymap. For a United States keyboard keymap, the ‘/’ (forward slash) key combined with the left shift key modifier are stored in the keymap to represent the key press combination that is used to represent the ASCII character ‘?’ (063 decimal). When the value is set to 1 (ALT ASCII code), instead of using the keymap, a international keyboard key press combination consisting of the decimal value of the ASCII character combined with the ALT key modifier is used. For example, to transmit the ASCII character ‘?’ (063 decimal), keypad ‘0’ is sent combined with left ALT key modifier, next keypad ‘6’ is sent combined with the left ALT key modifier, last keypad ‘3’ is sent combined with the left ALT key modifier. In general, if this device only needs to emulate United States keyboards then this property should be set to 0 (keymap). If this device needs to be able to emulate all country’s keyboards then this property should be set to 1 (ALT ASCII code). The tradeoffs are as follows. ALT ASCII code mode is slightly slower than keymap mode because more key presses need to be transmitted. Some applications are not compatible with ALT ASCII code mode. This property is stored in non-volatile EEPROM memory so it will persist when the unit is power cycled. When this property is changed, the unit must be power cycled to have these changes take effect. If a value other than the default value is desired, it can be set by the factory upon request. Examples follow:

Example Set INTERFACE_TYPE property Request (Hex):

Cmd Num	Data Len	Prp ID	Prp Value
01	02	0F	00

Example Set INTERFACE_TYPE property Response (Hex):

Result Code	Data Len	Data
00	00	

Example Get INTERFACE_TYPE property Request (Hex):

Cmd Num	Data Len	Prp ID
00	01	0F

Example Get INTERFACE_TYPE property Response (Hex):

Result Code	Data Len	Prp Value
00	01	00

INTERFACE_TYPE PROPERTY

Property ID: 16 (10 hex)
 Property Type: Byte
 Length: 1 byte
 Get Property: Yes
 Set Property: Yes
 Default Value: 1 (keyboard emulation)

USB HID Keyboard Emulation Swipe Reader

Description: The value is a byte that represents the devices interface type. The value can be set to 0 for the HID interface or to 1 for the keyboard emulation interface. When the value is set to 0 (HID) the device will behave as described in the HID manual. When the value is set to 1 (keyboard emulation) the device will behave as described in the keyboard emulation manual. This property should be the first property changed because it affects which other properties are available. After this property is changed, the device should be power cycled before changing any other properties. This property is stored in non-volatile EEPROM memory so it will persist when the unit is power cycled. When this property is changed, the unit must be power cycled to have these changes take effect. If a value other than the default value is desired, it can be set by the factory upon request. Examples follow:

Example Set INTERFACE_TYPE property Request (Hex):

Cmd Num	Data Len	Prp ID	Prp Value
01	02	10	00

Example Set INTERFACE_TYPE property Response (Hex):

Result Code	Data Len	Data
00	00	

Example Get INTERFACE_TYPE property Request (Hex):

Cmd Num	Data Len	Prp ID
00	01	10

Example Get INTERFACE_TYPE property Response (Hex):

Result Code	Data Len	Prp Value
00	01	00

SECTION 5. DEMO PROGRAM

The purpose of this demo program is not to demonstrate card reading with this HID keyboard emulation device. Use a text editor application such as Windows Notepad to demonstrate card reading for this HID keyboard emulation device. Any application that allows user input from a keyboard should be sufficient to demonstrate card reading for this device.

The primary purpose of the demo program, when used with this HID keyboard emulation device, is to allow users to change the device's programmable configuration properties. This is accomplished by sending commands to the device with the demo program. The demo program also comes with source code that can be used as a guide for application developers who want to change the device's programmable configuration properties in an application. However, it is unlikely that application developers will want to change these properties in an application since these properties only need to be set once and can be set at the factory. This program is written in Visual Basic.

Demo programs, version 1.2.0 and newer work on Windows 98, Me, 2000 and XP. Older versions do not support the HID keyboard emulation device on Windows 2000 or XP. These older versions only work on Windows 98 and Me.

When the demo program is run, a button for reading cards is displayed along with a button for sending commands. The card reading option is not supported for this HID keyboard emulation device. Use a text editor application such as Windows Notepad to demonstrate card reading for this HID keyboard emulation device.

The part numbers for the demo program can be found in this document in Section 1 under Accessories.

INSTALLATION

To install the demo program, run the setup.exe file and follow the instructions given on the screen.

OPERATION

To operate the demo program perform the following steps:

- Attach the device to a USB port on the host
- If this is the first time the device has been plugged into the host, then follow the instructions on the screen for installing the Windows HID device driver. This is explained in more detail in the installation section of this document.
- Run the demo program.
- To read cards and view the card data do not use the demo program. Use a text editor program such as Windows Notepad.
- To send commands to the device, click on the send commands button.

- Enter a command in the Message edit box. All data entered should be in hexadecimal bytes with a space between each byte. Enter the command number followed by the command data if there is any. The application will automatically calculate and send the command data length for you. For example, to send the GET_PROPERTY command for property SOFTWARE_ID enter 00 00.
- Press Enter or click on Send message to send the command and receive the result.
- The command request and the command result will be displayed in the Communications Dialog edit box.
- The Clear Dialog button clears the Communication Dialog edit box.

SOURCE CODE

Source code is included with the demo program. It can be used as a guide for application development. It is described in detail, with comments, to assist developers. The book *USB Complete* by Jan Axelson is also a good guide for application developers, especially the chapter on Human Interface Device Host Applications (see “Reference Documents” in Section 1).

APPENDIX A. USB INTELLIHEAD SWIPE READER

The following drawing is provided in this section:

Part Number Title

21030007 USB-KB INTHD 3TK 125MM WRE, 5P CONN

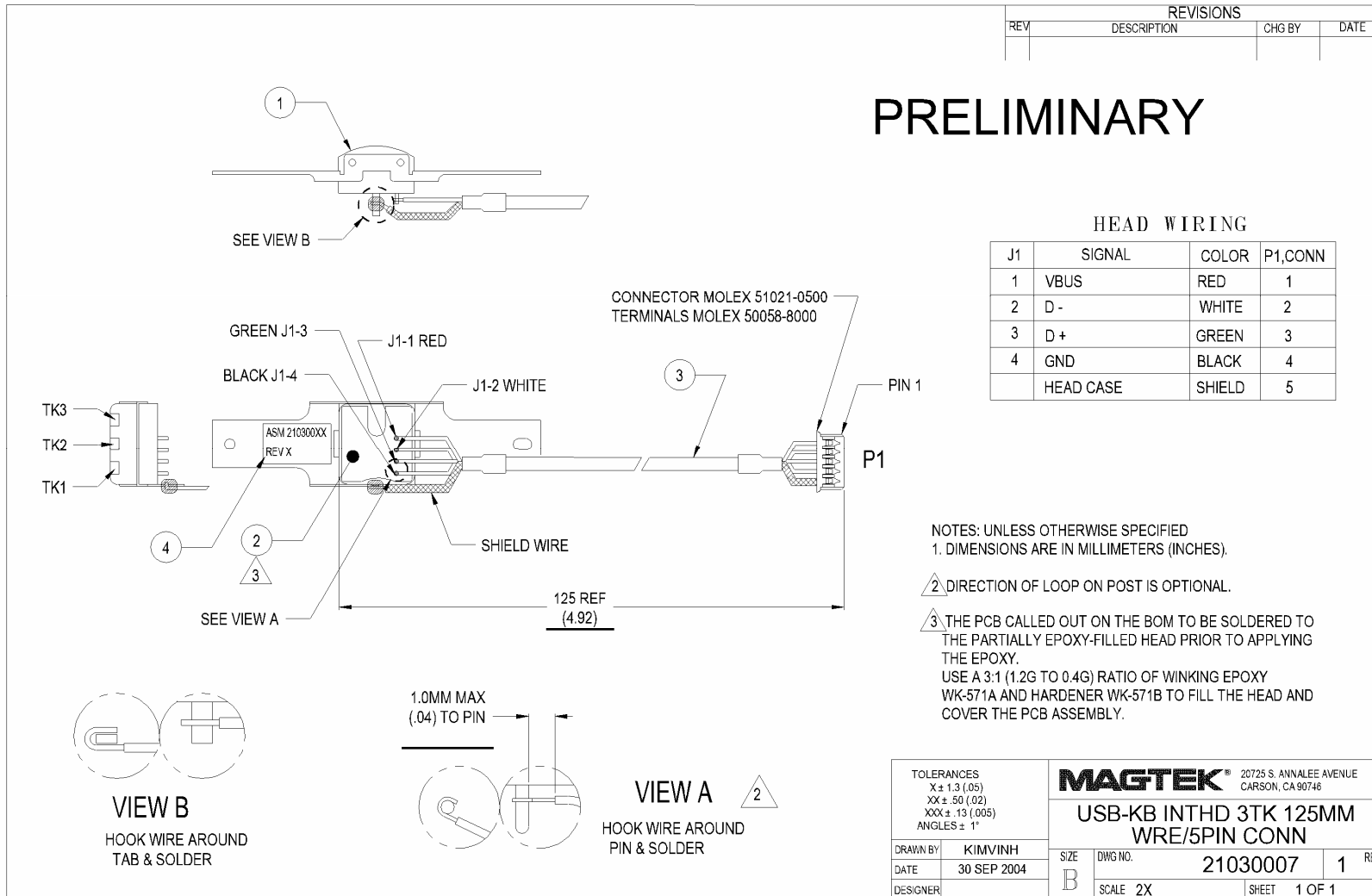


Figure A-1. USB Keyboard Emulation, For Swipe Readers, 125mm Wire, 5-Pin Connector

INSTALLATION GUIDE

LD9000U series



USB Interface Customer Pole Displays

LD9000U, LD9200U, LD9300U, LD9400U, LD9500U, LD9900U, LD9000XU, LD9200XU, LD9300XU, LD9400XU, LD9500XU and LD9900XU

HARDWARE INSTALLATION

Your LD9000U family of pole displays has been pre-assembled to make the installation as simple as possible.

1. Mount the pole display to the metal base plate using the mounting hardware provided.
2. The pole display can be used in a freestanding mode or attached to the counter using the remaining mounting hardware.
3. Connect the female phone jack of the power adapter to the power socket from the pole display.
4. Plug the power adapter into a 120VAC power outlet. Display should show a power on start up message.
5. Plug the USB cable from the pole display into the computer's USB port.

DRIVER INSTALLATION

When hardware is installed correctly, Windows will detect the USB pole display and start device driver installation. Insert the driver diskette into floppy disk drive A and follow instructions on screen to install the driver.

There are two types of drivers available. First one use a specific device name (\\.\LCLD9) to access the pole display directly. Select this driver if you are using OPOS or the POS software was tailored to use this device name. If the POS software is only able to access COM ports for the pole display, use the Virtual COM port device driver.

Installing USB Device Name Drivers:

For Windows 98/ME:

1. When Windows tried to search for a driver, specify a location "A:\Win98" and click [Next].
2. Windows will locate the driver "A:\Win98\LCLD9.inf". Click [Next] to install.
3. If Windows prompts for inserting driver disk again, click [OK] to continue and enter "A:\Win98" in the "Copy files from" dialog box. Then click [OK] to continue.
4. When finished copying the drivers, click [Finish].
5. Remove driver disk and reboot computer.
6. Go to "Device Manager" to check that the pole display has been installed correctly under "Universal Serial Bus Controllers" section.

For Windows 2000/XP:

1. When Windows tried to search for a driver, click on the check box "Specify a location " and click [Next]. Enter "A:\Win2000" for the location and click [Next].
2. If Windows indicates that it also found other drivers that are suitable, click on the check box "Install one of the other drivers".
3. Select driver A:\Win2000\LCLD9.inf and click [Next].
4. When finished installing, click [Finish].
5. Go to "Device Manager" to check that the pole display has been installed correctly under "Universal Serial Bus Controllers" section.

Installing Virtual COM Port Device Drivers:

For Windows 98/ME

1. When Windows tried to search for a driver, specify a location "A:\W98com" and click [Next].
2. Windows will locate the driver "A:LCLD9usb.inf". Click [Next] to install.
3. If Windows prompts for inserting driver disk again, click [OK] to continue and enter "A:\W98com" in the "Copy files from" dialog box. Then click [OK] to continue.
4. When finished copying the drivers, click [Finish].
5. Remove driver disk and reboot computer.
6. Click on [Start] -> [Settings] -> [Control Panel].
7. Click on [Add/Remove Hardware] and then [Next].
8. Windows will search for Plug & Play devices. Click [Next] to continue.
9. When prompted, click on the check box for "No, the device isn't in the list" and click [Next].
10. When prompted again, click on the check box for "No, I want to select the hardware from a list" and click [Next].
11. In the device list, select "Ports (COM & LPT)" and click [Next].
12. Click on [Have Disk] and select "LCI LCLD9 COM Port". Then click [Next].
13. There is no need to change hardware settings. Just click [Next] to continue installation.
14. When finished installing, click [Finish].
15. Remove driver disk and reboot computer.
16. Go to "Device Manager" to check that the pole display has been installed correctly under "Ports (COM & LPT)" section and note down the Port number.

For Windows 2000/XP:

1. When Windows tried to search for a driver, click on the check box "Specify a location " and click [Next]. Enter "A:\W2kCom" for the location and click [Next].
2. If Windows indicates that it also found other drivers that are suitable, click on the check box "Install one of the other drivers".
3. Select driver A:\W2kCom\LD9COM.inf and click [Next].
4. When finished installing, click [Finish].
5. Go to "Device Manager" to check that the pole display has been installed correctly under "Ports (COM & LPT)" section and note down the Port number.

INSTALLATION GUIDE

LD9000 series



Serial Interface Customer Pole Displays

**LD9000, LD9200, LD9300, LD9400, LD9500 and LD9900
LD9000X, LD9200X, LD9300X, LD9400X, LD9500X and
LD9900X**

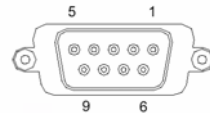
INSTALLATION

Your LD9000 family of pole displays has been pre-assembled to make the installation as simple as possible.

1. Mount the pole display to the metal base plate using the mounting hardware provided.
2. The pole display can be used in a freestanding mode or attached to the counter using the remaining mounting hardware.
3. Connect the round DIN6M connector from the pole display to the round DIN6F connector of the interface cable.
4. Connect the DB9F connector to the computer's serial COM1 or COM2 port.
5. Connect the female phone jack of the power adapter to the male phone jack of the interface cable.
6. Plug the power adapter into a 120VAC outlet.
7. A start up text message (LOGIC CONTROLS POS COMPONENTS) will be present for a short time. When this message disappears the cursor will be displayed at the left-most digit of the top row.

Serial Interface Connector Pinout

1. DCD (tied to pins 4&6)
2. NC
3. RXD from PC
4. DTR (tied to pins 1&6)
5. Ground
6. DSR (tied to pins 1&4)
7. RTS (tied to pin 8)
8. CTS (tied to pin 7)
9. NC



DB9F (to computer)

FUNCTIONAL TEST

The following test sequence will verify that your pole display is working properly. Before you start this procedure, you must install the pole display correctly as outlined under the INSTALLATION section. The functional test should be done under *MSDOS command prompt* by booting up the computer in DOS mode, or shell out to DOS prompt (in Window95/98/ME) or COMMAND prompt (in Windows NT/2000).

NOTE: The actual key entries in the text below are enclosed within quotation marks (" "). Do **not** type the quotation marks as part of your entries.

This test procedure assumes the pole display is connected to COM1 of the computer. If COM2 is being used, type COM2 where COM1 is called out.

Close all opened application programs that use the same COM port before shelling out to DOS COMMAND prompt. Enter the following command lines to open the COM port for communication with the pole display:

Type "MODE COM1 96,N,8,1" and press the ENTER key.
Type "TYPE CON>COM1" and press the ENTER key.

LD9000, LD9300, LD9400, LD9500, LD9900

1. Type "ABCDEFGH" and press ENTER key. The display will show "ABCDEFGH" on the first line.
2. To end the test press Ctrl-C (hold down Ctrl and press C).

LD9200

1. Type "!#1ABCDEFGH" and press ENTER key. The display will show "ABCDEFGH" on the first line.
2. To end the test press Ctrl-C (hold down Ctrl and press C).

Models: LD9000 Series

Customer Displays

2 by 20 character display

USER MANUAL



NOTICE

The manufacturer of the POS pole display makes no representations or warranties, either expressed or implied, by or with respect to anything in this manual, and shall not be liable for any implied warranties of fitness for a particular purpose or for any indirect, special or consequential damages. Information in this document is subject to change without notice and does not represent a commitment on the part of the manufacturer.

FCC NOTICE

This equipment generates, uses, and can radiate radio frequency energy and if not installed and used in accordance with this manual, may cause interference to radio communications. It has been tested and found to comply with the limits for a Class A digital device pursuant to Subpart J of Part 15 of FCC Rules, which are designed to provide reasonable protection against interference when operated in a commercial environment. Operation of this equipment in a residential area is likely to cause interference in which case the user at his own expense will be required to take whatever measures may be required to correct the interference.

LOGIC CONTROLS, INC.

355 Denton Avenue
New Hyde Park, NY 11040

TEL: (516) 248-0400

FAX: (516) 248-0443

Email: lci@logiccontrols.com

<http://www.logiccontrols.com>

TABLE OF CONTENTS

FEATURES	1
MODEL IDENTIFICATION.....	2
CARTON CONTENTS	2
INSTALLATION	3
FUNCTIONAL TEST.....	5
INTERFACE CONNECTION.....	8
SOFTWARE COMMANDS	10
HARDWARE CONFIGURATION.....	14
DISPLAY CHARACTER CODES	15
GENERAL SPECIFICATIONS	16

FEATURES

The LD9000 family of pole displays offers a wide range of high quality features and models to choice from. Listed below are the features incorporated into each pole display. Not all features are available in all models. The model identification chart will assist you in selecting the model best suited to your needs.

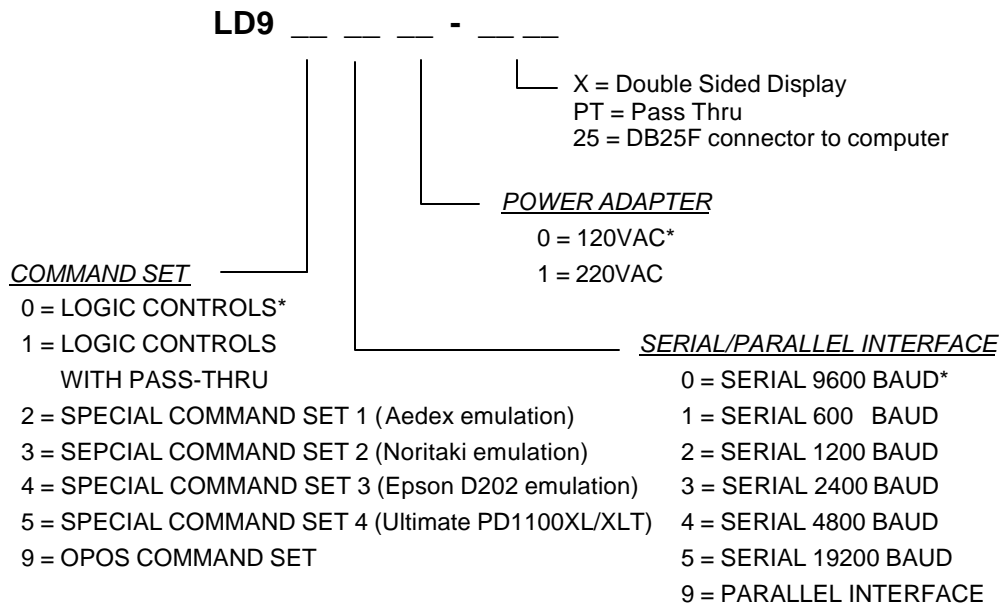
Features - All Models

- Bright blue-green fluorescent display
- Large 9mm character height
- Double sided display available
- Supports high speed serial protocol: up to 19,200 baud rate, 1 stop bit
- Automatic message scrolling
- Two line display with 20 characters per line
- Matched optical lens for better viewing contrast
- Ergonomic design
- Direct RS232C or parallel interface
- Long life and trouble free operation
- Five adjustable viewing angles
- Simple installation
- Available with 120V or 220V Power Adapters

Features - Model dependent

- Emulation of other popular command sets
- Double sided display
- User definable character
- Parallel pass-thru
- True RS232C pass-thru
- Real time clock
- One time message scrolling
- Ability to disable attention code
- Ability to change attention code

MODEL IDENTIFICATION



* Default Values

** Call for description of Command Sets

CARTON CONTENTS

1. Pole display, pre-assembled.
2. Interface cable, comes with a DB9F connector (to computer) and a DIN6F connector (to pole display) as standard equipment. Optional DB25F connector (to computer) is available.
Note: This cable is only supplied with standard serial pole displays with no pass-thru function. Other interface options will have different cables.
3. Transformer adapter 120VAC to 6.0VAC (optional 220VAC).
4. Metal base plate with mounting hardware.
5. Quick Installation Guide.

INSTALLATION

Your PD9000 family of pole displays has been pre-assembled to make the installation as simple as possible.

Serial Interface Non-pass-thru Models Installation

1. Mount the pole display to the metal base plate using the mounting hardware provided.
2. The pole display can be used in a freestanding mode or attached to the counter using the remaining mounting hardware.
3. Connect the round DIN6M connector from the pole display to the round DIN6F connector of the interface cable.
4. Connect the DB9F connector to the computer's serial COM1 or COM2 port.
5. Connect the female phone jack of the power adapter to the male phone jack of the interface cable.
6. Plug the power adapter into a 120VAC outlet.
7. A start up text message (LOGIC CONTROLS POS COMPONENTS) will be present for a short time. When this message disappears the cursor will be displayed at the left-most digit of the top row.

Parallel Interface Non-pass-thru Models Installation

1. Mount the pole display to the metal base plate using the mounting hardware provided.
2. The pole display can be used in a freestanding mode or attached to the counter using the remaining mounting hardware.
3. Connect the DB25M connector to the computer's parallel printer port (LPT1).
4. Connect the female phone jack of the power adapter to the male phone jack of the pole display cable.
5. Plug the power adapter into a 120VAC outlet.
6. A start up text message (LOGIC CONTROLS POS COMPONENTS) will be present for a short time. When this message disappears the cursor will be displayed at the left-most digit of the top row.

Serial Interface Pass-thru Models Installation

- 1 Mount the pole display to the metal base plate using the mounting hardware provided.
- 2 The pole display can be used in a freestanding mode or attached to the counter using the remaining mounting hardware.
- 3 Connect the DB25M connector to the peripheral device or a serial pass-thru terminator (optional accessory). Turn on power of the peripheral device.
- 4 Connect the DB9F connector to the computer's serial COM1 or COM2 port.
- 5 Connect the female phone jack of the power adapter to the male phone jack of the pole display cable.
- 6 Plug the power adapter into a 120VAC outlet.
- 7 A start up text message (LOGIC CONTROLS POS COMPONENTS) will be present for a short time. When this message disappears the cursor will be displayed at the left-most digit of the top row.

Parallel Interface Pass-thru Models Installation

- 1 Mount the pole display to the metal base plate using the mounting hardware provided.
- 2 The pole display can be used in a freestanding mode or attached to the counter using the remaining mounting hardware.
- 3 Connect the DB25F connector to the peripheral device or parallel pass-thru terminator (optional accessory). Turn on power of the peripheral device.
- 4 Connect the DB25M connector to the computer's parallel printer port (LPT1).
- 5 Connect the female phone jack of the power adapter to the male phone jack at the DB25M/DB25F connector.
- 6 Plug the power adapter into a 120VAC outlet.
- 7 A start up text message (LOGIC CONTROLS POS COMPONENTS) will be present for a short time. When this message disappears the cursor will be displayed at the left-most digit of the top row.

FUNCTIONAL TEST

The following test sequence will verify that your pole display is working properly. Before you start this procedure, you must install the pole display correctly as outlined under the INSTALLATION section. The functional test should be done under *MSDOS command prompt* by booting up the computer in DOS mode, or shell out to DOS prompt (in window95/98/ME) or COMMAND prompt (in windows NT/2000).

For double sided displays, the messages will be shown on both sides at the same time.

NOTE: The actual key entries in the text below are enclosed within quotation marks (" "). Do**not** type the quotation marks as part of your entries.

Serial Interface Pole Displays Functional Test

This test procedure assumes the pole display is connected to COM1 of the computer. If COM2 is being used, type COM2 where COM1 is called out.

Close all opened application programs that use the same COM port before going into DOS command prompt. Enter the following command lines to open the COM port for communication with the pole display:

Type "MODE COM1 96,N,8,1" and press the ENTER key.
Type "TYPE CON>COM1" and press the ENTER key.

LD9000, LD9300, LD9400, LD9500 and LD9900

1. Type "ABCDEFGH" and press ENTER key. The display will show "ABCDEFGH" on the first line.
2. To end the test press Ctrl-C (hold down Ctrl and press C).

LD9200

1. Type "!#1ABCDEFGH" and press ENTER key. The display will show "ABCDEFGH" on the first line.
2. To end the test press Ctrl-C (hold down Ctrl and press C).

LD9100-PT, LD9300-PT, LD9400-PT and LD9500-PT

1. Type "ABCDEFGH" and press ENTER key. The display will show "ABCDEFGH" on the first line.
2. Type "^APASSTHRU" (^A is entered as Ctrl-A) and press ENTER key. The data will be passed through to the peripheral (e.g. a printer). These characters are not shown on the display.
3. Type " !#^BNUMBER12345" (^B is entered as Ctrl-B), then press ENTER key. The display will show "NUMBER12345" on the first line.
4. To end the test press Ctrl-C (hold down Ctrl and press C).

LD9200-PT

1. Type " !#1ABCDEFGH" and press ENTER key. The display will show "ABCDEFGH" on the first line.
2. Type "PASSTHRU" and press ENTER key. The data will be passed through to the peripheral (e.g. a printer). These characters are not shown on the display.
3. Type " !#1NUMBER12345", then press ENTER key. The display will show "NUMBER12345" on the first line.
4. To end the test press Ctrl-C (hold down Ctrl and press C).

Parallel Interface Pole Displays Functional Test

This procedure assumes the pole display is connected to the LPT1 port of the computer. If parallel port LPT2 is being used, type LPT2 where LPT1 is called out.

LD9090, LD9390, LD9490, LD9590 and LD9990

1. Type "ECHO ABCDEFGH>LPT1" and press ENTER key. The display will show "ABCDEFGH" on the first line.

LD9290

1. Type "ECHO !#1ABCEDFGH>LPT1" and press ENTER key. The display will show "ABCDEFGH" on the first line.

LD9190-PT, LD9390-PT, LD9490-PT and LD9590-PT

1. Type "ECHO ABCDEFGH>LPT1" and press ENTER key. The display will show "ABCDEFGH" on the first line.
2. Type "ECHO ^**A**PASSTHRU>LPT1" (^**A** is entered as Ctrl-A) and press ENTER key. The data will be passed through to the peripheral (e.g. a printer). These characters are not shown on the display.
3. Type "ECHO !#**B**NUMBER12345>LPT1" (^**B** is entered as Ctrl-B), then press ENTER key. The display will show "NUMBER12345" on the first line.

LD9290-PT

1. Type "ECHO !#1ABCDEFGH>LPT1" and press ENTER key. The display will show "ABCDEFGH" on the first line.
2. Type "ECHO PASSTHRU>LPT1" and press ENTER key. The data will be passed through to the peripheral (e.g. a printer). These characters are not shown on the display.
3. Type "ECHO !#1NUMBER12345>LPT1", then press ENTER key. The display will show "NUMBER12345" on the first line.

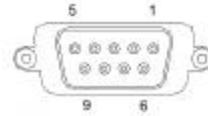
For further testing of OPOS displays (LD9900 and LD9990), follow the instructions in the readme.doc file after software installation.

INTERFACE CONNECTION

Serial Interface Connector Configuration

The pin out configuration for the standard serial pole display is a DB9F connector. It plugs directly into the serial port of the computer.

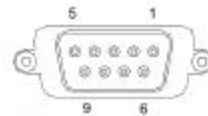
1. DCD (tied to pins 4&6)
2. NC
3. TXD from PC
4. DTR (tied to pins 1&6)
5. Ground
6. DSR (tied to pins 1&4)
7. RTS (tied to pin 8)
8. CTS (tied to pin 7)
9. NC



DB9F (to computer)

For pass-through models, the display cable comes with two connectors. The DB9F is to be connected to the computer while the DB25M is for connection to the peripheral.

1. DCD (tied to pins 4&6)
2. TXD to PC
3. RXD from PC
3. DTR (tied to pins 1&6)
4. Ground
5. DSR (tied to pins 1&4)
6. RTS (tied to pin 8)
7. CTS (tied to pin 7)
8. NC



DB9F (to computer)

1. NC
2. TXD to peripheral
3. RXD from peripheral
4. RTS
5. CTS (tied to pin 20)
6. NC
7. Ground
8. NC
- 9-19 NC
- 20 DTR (tied to pin 5)
- 21-25 NC



DB25M (to peripheral)

Parallel Interface Connector Configuration

All standard parallel pole displays will have a DB25 male connector. It is connected to the printer port of the computer.

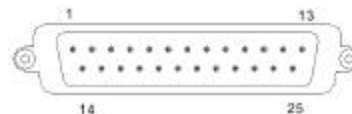
1. –Strobe
2. Data 0
3. Data 1
4. Data 2
5. Data 3
6. Data 4
7. Data 5
8. Data 6
9. Data 7
10. –Ack
11. Busy
- 12-17 NC
- 18-25 Ground



DB25M (to computer)

For pass-through models, the display cable comes with a dual DB25M/F connector. The DB25M is to be connected to the computer while the DB25F is for connection to the peripheral.

1. –Strobe
2. Data 0
3. Data 1
4. Data 2
5. Data 3
6. Data 4
7. Data 5
8. Data 6
9. Data 7
10. –Ack
11. Busy
12. Paper End
13. Select
14. -Auto Feed
15. -Error
16. -Initialize Printer
17. -Select In
- 18-25. Ground



DB25M (to computer)



DB25F (to peripheral)

SOFTWARE COMMANDS

Logic Controls pole displays are controlled by command codes and data from the computer. The model of pole display that you have will determine which command set works with your pole. Refer to the model identification chart for further information.

Commands are transmitted to the pole display as ASCII codes. The command codes listed below are expressed in hexadecimal (base 16) numbers enclosed inside angle brackets < >, in decimal numbers enclosed in parenthesis (), and in ASCII characters enclosed in curly brackets { }. Do not include the brackets as part of the command. ' ^ ' character denotes ' Ctrl ' in the keyboard. Press and hold ' Ctrl ' , then press the next key.

LOGIC CONTROLS COMMAND SET (LD9000, LD9000-X):

- 1. Vertical Scroll Mode <12>, (18), {^R}:**
Data is written into the second row and transferred to the first row when carriage return is received, leaving the second row empty.
- 2. Normal Display Mode <11>, (17), {^Q}:**
Data can be written into either row. Moves to the left most digit of the other row when line is full.
- 3. Brightness Control <04>, (04), {^D}:**
The brightness of the display can be adjusted using this command followed by a data byte <FF>, <60>, <40> or <20>.
- 4. Back Space <08>, (08), {^H}:**
The cursor position moves one digit to the left erasing the previous information.
- 5. Horizontal Tab <09>, (09), {^I}:**
The cursor position shifts one digit to the right without erasing character at original cursor position.
- 6. Line Feed <0A>, (10), {^J}:**
The cursor position moves to the same position in the other row. In vertical scroll mode, if cursor was in second row, the cursor will not move and display will scroll up.

7. **Carriage Return <0D>, (13), {^M}:**
The cursor moves to the left most digit of the row it is in.
8. **Digit Select <10>, (16), {^P}:**
Moves the cursor to any position on the display with this command followed by a data byte of <00> to <27>, or in decimal (00) to (39).
9. **Cursor On <13>, (19), {^S}:**
Turns on the cursor.
10. **Cursor Off <14>, (20), {^T}:**
Turns off the cursor.
11. **Reset <1F>, (31), {^_}:**
All characters are erased and all settings are returned to the power-on reset conditions.
12. **Down Load Font <03><X> <F> <F> <F> <F> <F>:**
Assign a keyboard key (ASCII code <20> to <7F>) to a different style font. The "X" represents the ASCII code for the selected key. The "F" s" represent the 5 segments that will make up the special font.
13. **Message Scroll Left on Top Line
<05><X><X><X> ... <X><0D>:**
Scrolls a continuous message of up to 45 characters from right to left on the top line.
14. **Message Scroll Left on Bottom Line
<1B><06><X><X><X> ... <X><0D>:**
Scrolls a continuous message of up to 45 characters from right to left on the bottom line.
15. **Message Scroll Right on Top Line
<1B><07><X><X><X> ... <X><0D>:**
Scrolls a continuous message of up to 45 characters from left to right on the top line.
16. **Message Scroll Right on Bottom Line
<1B><0B><X><X><X> ... <X><0D>:**
Scrolls a continuous message of up to 45 characters from left to right on the bottom line.

- 17. Both Side Display <1B><0C>, (27)(12), {^[]{^L}:
After this command, all messages followed are displayed on both sides of double sided displays.**
- 18. Front Side Display <1B><0E>, (27)(14), {^[]{^N}:
After this command, all messages followed are displayed only on front side of double sided displays.**
- 19. Back Side Display <1B><0F>, (27)(15), {^[]{^O}:
After this command, all messages followed are displayed only on back side of double sided displays.**
- 20. Clock Display <1B><1A><h><h><3A><m><m>:
Displays real time clock on bottom line in the 12 hour format hh:mm.**
- 21. Smart Message Scroll Left on Top Line
<1B><15><X><X><X> ... <1C> ..<1C> ..<X><0D>:
Scrolls a multi-part message of up to total of 45 characters from right to left on the top line. Message parts are separated by <1C> and each part must be less than 20 characters.**
- 22. Smart Message Scroll Left on Bottom Line
<1B><16><X><X><X> ... <1C> ..<1C> ..<X><0 D>:
Scrolls a multi-part message of up to total of 45 characters from right to left on the bottom line. Message parts are separated by <1C> and each part must be less than 20 characters.**
- 23. Smart Message Scroll Right on Top Line
<1B><13><X><X><X> ... <1C> ..<1C> ..<X><0D>:
Scrolls a multi-part message of up to total of 45 characters from left to right on the top line. Message parts are separated by <1C> and each part must be less than 20 characters.**
- 24. Smart Message Scroll Right on Bottom Line
<1B><14><X><X><X> ... <1C> ..<1C> ..<X><0D>:
Scrolls a multi-part message of up to total of 45 characters from left to right on the bottom line. Message parts are separated by <1C> and each part must be less than 20 characters.**

PASS-THRU COMMAND SET (LD9100-PT, LD9100X-PT):

All software commands of the non-pass-thru single sided model are available with following additional commands for pass-thru and double-sided display control. When power is turned on or after a reset command has been initiated, all text is displayed on the pole display.

Extended Pass-thru Command Set is available as option.

Standard Pass-thru Command Set

- 1. Data to Peripheral <01>, (01), <^A>:**
All data following this command will be sent to the peripheral until a “Data to Display” command is received.
- 2. Data to Display <21><23><02>, (33)(35)(02), {!}{#}{^B}:**
All data following this command will be sent to the pole display until a “Data to Peripheral” command is received.

Extended Pass-thru Command Set

- 1. Data to Peripheral <01><1C><1D><1E>, (01)(28)(29)(30):**
All data following this command will be sent to the peripheral until a “Data to Display” command is received.
- 2. Data to Display <17><18><19><02>, (23)(24)(25)(02):**
All data following this command will be sent to the pole display until a “Data to Peripheral” command is received.

HARDWARE CONFIGURATION

Serial pole displays were factory configured for serial RS232C interface using the following protocol:

- 9600 Baud Rate
- 8 Data Bits
- 1 Stop Bit
- No Parity

Other optional baud rates are available with factory settings. Refer to the model identification chart for further information.

DISPLAY CHARACTER CODES

	D7	0	0	0	0	0	0	0	0	0	0	
	D6	0	0	0	0	1	1	1	1	1	1	
	D5	0	0	1	1	0	0	1	1	1	1	
	D4	0	1	0	1	0	1	0	1	0	1	
D	D	D	D		0	1	2	3	4	5	6	7
3	2	1	0			DP	SP	0	@	P	'	p
0	0	0	0	0								
0	0	0	1	1		DC 1	!	1	A	Q	a	q
0	0	1	0	2		DC 2	"	2	B	R	b	r
0	0	1	1	3	DL	DC 3	#	3	C	S	c	s
0	1	0	0	4	DI M	DC 4	\$	4	D	T	d	t
0	1	0	1	5	MS		%	5	E	U	e	u
0	1	1	0	6			&	6	F	V	f	v
0	1	1	1	7			'	7	G	W	g	w
1	0	0	0	8	BS		(8	H	X	h	x
1	0	0	1	9	HT)	9	I	Y	i	y
1	0	1	0	A	LF		*	:	J	Z	j	z
1	0	1	1	B			+	;	K	[k	{
1	1	0	0	C	CR		,	<	L	\	l	
1	1	0	1	D			-	=	M]	m	}
1	1	1	0	E			.	>	N	^	n	~
1	1	1	1	F		RS T	/	?	O	_	o	

GENERAL SPECIFICATIONS

	<u>LD9000</u>	<u>LD900X</u>
OPTICAL:		
Number of rows	2	2 x 2 sides
Number of digits/row	20	20
Dot matrix	5 x 7	5 x 7
Digit height)	0.374in. (9.5mm)	0.374in. (9.5mm)
Digit width	0.244in. (6.2mm)	0.244in. (6.2mm)
Character config.	ASCII	ASCII
Brightness (typical)	900 cd/m ²	900 cd/m ²
Display color	Blue-Green	Blue-Green
MTBF (hours)	300,000	300,000
MECHANICAL:		
Weight	2.7 lb.	2.7 lb.
Dimensions (in inches)	(w x h x d)	(w x h x d)
Display head	8.50 x 3.37 x 1.75	8.50 x 3.37 x 1.75
Rectangular base	2.12 x 2.0 x 2.25	2.12 x 2.0 x 2.25
Base plate	4.0 x 0.09 x 8.0	4.0 x 0.09 x 8.0
Overall height (typical)	24	24
ELECTRICAL:		
Adapter input power	120VAC, 60Hz; optional 220VAC, 50Hz	
Adapter output power	7.5VAC, 1000mA	
ENVIRONMENTAL:		
Operating temperature	0 to +50 °C	
Storage temperature	-20 to +70 °C	
Relative Humidity	80%, non-condensing	
Vibration (10 to 55 Hz.)	4G' s	
Shock	40G' s	
CABLES & CONNECTORS:		
Serial		
Display cable	6-pin DIN (male)	
Interface cable	6-pin Din (female) DB9 (female); optional DB25 (female)	
Power adapter	Phone jack (male) Phone jack (female)	
Parallel		
Display cable	DB25 (female)	

INSTALLATION GUIDE

LD9000 series



Serial Interface Customer Pole Displays

**LD9000, LD9200, LD9300, LD9400, LD9500 and LD9900
LD9000X, LD9200X, LD9300X, LD9400X, LD9500X and
LD9900X**

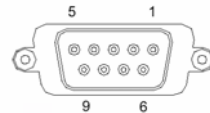
INSTALLATION

Your LD9000 family of pole displays has been pre-assembled to make the installation as simple as possible.

1. Mount the pole display to the metal base plate using the mounting hardware provided.
2. The pole display can be used in a freestanding mode or attached to the counter using the remaining mounting hardware.
3. Connect the round DIN6M connector from the pole display to the round DIN6F connector of the interface cable.
4. Connect the DB9F connector to the computer's serial COM1 or COM2 port.
5. Connect the female phone jack of the power adapter to the male phone jack of the interface cable.
6. Plug the power adapter into a 120VAC outlet.
7. A start up text message (LOGIC CONTROLS POS COMPONENTS) will be present for a short time. When this message disappears the cursor will be displayed at the left-most digit of the top row.

Serial Interface Connector Pinout

1. DCD (tied to pins 4&6)
2. NC
3. RXD from PC
4. DTR (tied to pins 1&6)
5. Ground
6. DSR (tied to pins 1&4)
7. RTS (tied to pin 8)
8. CTS (tied to pin 7)
9. NC



DB9F (to computer)

FUNCTIONAL TEST

The following test sequence will verify that your pole display is working properly. Before you start this procedure, you must install the pole display correctly as outlined under the INSTALLATION section. The functional test should be done under *MSDOS command prompt* by booting up the computer in DOS mode, or shell out to DOS prompt (in Window95/98/ME) or COMMAND prompt (in Windows NT/2000).

NOTE: The actual key entries in the text below are enclosed within quotation marks (" "). Do **not** type the quotation marks as part of your entries.

This test procedure assumes the pole display is connected to COM1 of the computer. If COM2 is being used, type COM2 where COM1 is called out.

Close all opened application programs that use the same COM port before shelling out to DOS COMMAND prompt. Enter the following command lines to open the COM port for communication with the pole display:

Type "MODE COM1 96,N,8,1" and press the ENTER key.
Type "TYPE CON>COM1" and press the ENTER key.

LD9000, LD9300, LD9400, LD9500, LD9900

1. Type "ABCDEFGH" and press ENTER key. The display will show "ABCDEFGH" on the first line.
2. To end the test press Ctrl-C (hold down Ctrl and press C).

LD9200

1. Type "!#1ABCDEFGH" and press ENTER key. The display will show "ABCDEFGH" on the first line.
2. To end the test press Ctrl-C (hold down Ctrl and press C).

SOFTWARE COMMANDS

Logic Controls pole displays are controlled by command codes and data from the computer. Commands are transmitted to the pole display as ASCII codes. The command codes listed below are expressed in hexadecimal (base 16) numbers enclosed inside angle brackets <>, in decimal numbers enclosed in parenthesis (), and in ASCII characters enclosed in curly brackets { }. Do **not** include the brackets as part of the command. ' ^ ' character denotes 'Ctrl' in the keyboard. Press and hold 'Ctrl', then press the next key.

LOGIC CONTROLS COMMAND SET (LD9000, LD9000X):

1. **Vertical Scroll Mode <12>, (18), {^R}:**
Data is written into the second row and scrolled to the first row when carriage return is received, leaving the second row empty.
2. **Normal Display Mode <11>, (17), {^Q}:**
Data can be written into either row. Moves to the left most digit of the other row when line is full.
3. **Brightness Control <04>, (04), {^D}:**
Brightness of the display can be adjusted with this command followed by data byte <FF>, <60>, <40> or <20>.
4. **Back Space <08>, (08), {^H}:**
The cursor position moves one digit to the left erasing the previous information.
5. **Horizontal Tab <09>, (09), {^I}:**
The cursor position shifts one digit to the right without erasing character at original cursor position.
6. **Line Feed <0A>, (10), {^J}:**
The cursor position moves to the same position in the other row. In vertical scroll mode, if cursor was in second row, the cursor will not move and display will scroll up.
7. **Carriage Return <0D>, (13), {^M}:**
The cursor moves to the left most digit of the row it is in.
8. **Digit Select <10>, (16), {^P}:**
Moves the cursor to any position on the display with this command followed by data byte <00> to <27>.
9. **Cursor On <13>, (19), {^S}:**
Turns on the cursor.
10. **Cursor Off <14>, (20), {^T}:**
Turns off the cursor.
11. **Reset <1F>, (31), {^_}:**
All characters are erased and all settings are returned to the power-on reset conditions.
12. **Down Load Font <03><X> <F> <F> <F> <F> <F>:**
Assign a keyboard key (ASCII code <20> to <7F>) to a different style font. The "X" represents the ASCII code for the selected key. The "F"s represent the 5 segments that will make up the special font.
13. **Message Scroll <05><X><X><X> ... <X><0D>:**
Scrolls a continuous message of up to 45 characters from right to left on the top line.
14. **Message Scroll Left on Bottom Line <1B><06><X><X><X> ... <X><0D>:**
Scrolls a continuous message of up to 45 characters from right to left on the bottom line.
15. **Message Scroll Right on Top Line <1B><07><X><X><X> ... <X><0D>:**
Scrolls a continuous message of up to 45 characters from left to right on the top line.
16. **Message Scroll Right on Bottom Line <1B><0B><X><X><X> ... <X><0D>:**
Scrolls a continuous message of up to 45 characters from left to right on the bottom line.
17. **Both Side Display <1B><0C>, (27)(12), {^I} [{}^L]:**
After this command, all messages followed are displayed on both sides of double sided displays.
18. **Front Side Display <1B><0E>, (27)(14), {^I} [{}^N]:**
After this command, all messages followed are displayed only on front side of double sided displays.
19. **Back Side Display <1B><0F>, (27)(15), {^I} [{}^O]:**
After this command, all messages followed are displayed only on back side of double sided displays.
20. **Clock Display <1B><1A><h><h><3A><m><m>:**
Displays real time clock on bottom line in the 12 hour format hh:mm.
21. **Smart Message Scroll Left on Top Line <1B><15><X><X><X> ... <1C> ... <1C> ... <X><0D>:**
Scrolls a multi-part message of up to total of 45 characters from right to left on the top line. Message parts are separated by <1C> and each part must be less than 20 characters.
22. **Smart Message Scroll Left on Bottom Line <1B><16><X><X><X> ... <1C> ... <1C> ... <X><0D>:**
Scrolls a multi-part message from right to left on the bottom line.
23. **Smart Message Scroll Right on Top Line <1B><13><X><X><X> ... <1C> ... <1C> ... <X><0D>:**
Scrolls a multi-part message from left to right on the top line.
24. **Smart Message Scroll Right on Bottom Line <1B><14><X><X><X> ... <1C> ... <1C> ... <X><0D>:**
Scrolls a multi-part message from left to right on the bottom line.

GENERAL SPECIFICATIONS

	<u>LD9000</u>	<u>LD9000X</u>
OPTICAL:		
Number of rows	2	2 x 2 sides
Number of digits/row	20	20
Dot matrix	5 x 7	5X7
Digit height	0.374in. (9.5mm)	0.374in. (9.5mm)
Digit width	0.244in. (6.2mm)	0.244in. (6.2mm)
Character format	ASCII	ASCII
Brightness (typical)	900 cd/m ²	900 cd/m ²
Display color	Blue-Green	Blue-Green
MTBF (hours)	300,000	300,000

MECHANICAL:

Weight	2.7 lb.	2.7 lb.
Dimensions (in inches)	(w x h x d)	(w x h x d)
Display head	8.50 x 3.37 x 1.75	8.50 x 3.37 x 2.25
Rectangular base	2.12 x 2.00 x 2.25	2.12 x 2.00 x 2.25
Base plate	4.0 x 0.09 x 8.0	4.0 x 0.09 x 8.0
Overall height (typical)	8 to 25	8 to 25

ELECTRICAL:

Adapter input power	120VAC, 60Hz; optional 220VAC, 50Hz
Adapter output power	7.5VAC, 1000mA

ENVIRONMENTAL:

Operating temperature	0 to +50 °C
Storage temperature	-20 to +70 °C
Relative Humidity	80%, non-condensing
Vibration (10 to 55 Hz.)	4G's
Shock	40G's

CABLES & CONNECTORS:

Serial

Display cable	6-pin DIN (male)
Interface cable	6-pin DIN (female) DB9 (female); optional DB25 (female) Phone jack (male)
Power adapter	Phone jack (female)