

COBY®

MP-C983



**8GB MICRO HARD DISK MP3 PLAYER with
VIDEO PLAYBACK**



Instruction Manual

Please read this manual carefully before operation.

PRECAUTIONS

	CAUTION <i>RISK OF ELECTRIC SHOCK</i> <i>DO NOT OPEN</i>	
CAUTION: TO REDUCE THE RISK OF FIRE AND ELECTRIC SHOCK, DO NOT REMOVE THE COVER (OR BACK) OF THE UNIT. REFER SERVICING ONLY TO QUALIFIED SERVICE PERSONNEL.		

For Customer Use:

Enter below the serial number that is located on the bottom of the unit. Retain this information for future reference.

Model No. MP-C983

Serial No. _____



The lightning flash with arrowhead symbol within an equilateral triangle is intended to alert the user to the presence of uninsulated "dangerous voltage" within the product's enclosure that may be of sufficient magnitude to constitute a risk of electric shock.



The exclamation point within an equilateral triangle is intended to alert the user to the presence of important operation and servicing instructions in the literature accompanying the appliance.

WARNING:

To prevent fire or shock hazard, do not expose this device to rain or moisture. Dangerous high voltage is present inside the enclosure. Do not open the cabinet.

CAUTION:

To prevent electric shock, match wide blade of plug to wide slot of outlet and fully insert.

WARNING:

Handling the cords on this product will expose you to lead, a chemical known to the State of California to cause cancer, and birth defects or other reproductive harm. ***Wash hands after handling.***

NOTICE:

This product is protected by certain intellectual property rights of Microsoft. Use or distribution of such technology outside of this product is prohibited without a license from Microsoft.

Protect your hearing:

Hearing experts advise against the constant use of personal stereos played at high volume. Constant exposure to high volumes can lead to hearing loss. If you should experience ringing in the ears or hearing loss, discontinue use and seek medical advice.



For recycling or disposal information about this product, please contact your local authorities or the Electronics Industries Alliance: www.eiae.org.

PRECAUTIONS

Regulatory Information

This device complies with part 15 of FCC rules. Operation is subject to the following two conditions:

1. This device may not cause harmful interference, and
2. This device must accept any interference received, including interference that may cause undesired operation.

FCC Notice:

This equipment has been tested and found to comply with the limits for a Class B digital device, pursuant to part 15 of the FCC Rules. These limits are designed to provide reasonable protection against harmful interference in a residential installation. This equipment generates, uses, and can radiate radio frequency energy and, if not installed and used in accordance with the instructions, may cause harmful interference to radio communications. However, there is no guarantee that interference will not occur in a particular installation. If this equipment does cause harmful interference to radio and television reception, which can be determined by turning the equipment off and on, the user is encouraged to try to correct the interference by one or more of the following measures:

- Reorient or relocate the receiving antenna.
- Increase the separation between the equipment and receiver.
- Connect the equipment into an outlet on a circuit different from that to which the receiver is connected.
- Consult the dealer or an experienced radio/ TV technician for help.

If the product suddenly has no response or powers off, an electrostatic discharge may be the cause. In this circumstance, please follow the procedures below for recovery:

- Turn off the unit by pushing and holding the slide button at the right (Power off position) for 15 seconds.
- Turn on the unit again

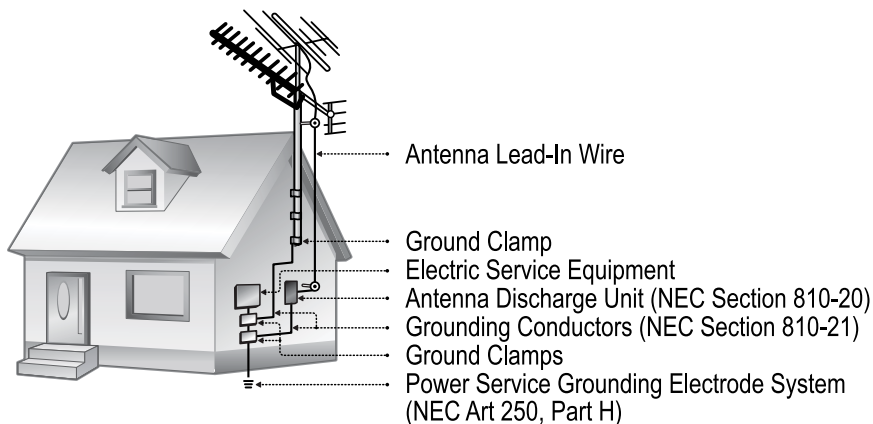
IMPORTANT SAFETY INSTRUCTIONS

1. **Read Instructions:** All the safety and operating instructions should be read before the product is operated.
2. **Retain Instructions:** The safety and operating instructions should be retained for future reference.
3. **Heed Warnings:** All warnings on the product and in the operating instructions should be adhered to.
4. **Follow Instructions:** All operating and usage instructions should be followed.
5. **Cleaning:** Unplug this product from the wall outlet before cleaning. Do not use liquid cleaners or aerosol cleaners. Use a damp cloth for cleaning.
6. **Attachments:** Use only attachments recommended by the manufacturer. Use of other attachments may be hazardous.
7. **Water and Moisture:** Do not use this product near water (e.g., near a bath tub, washbowl, kitchen sink, laundry tub, in wet basements, or near a swimming pool and the like).
8. **Accessories:** Do not place this product on an unstable cart, stand, tripod, bracket, or table. Use only with carts, stands, tripods, brackets, or tables recommended by the manufacturer or sold with the product. Any mounting of the product should follow the manufacturer's instructions and should use a mounting accessory recommended by the manufacturer.
9. A product and cart combination should be moved with care. Quick stops, excessive force, and uneven surfaces may cause the product and cart combination to overturn.
10. **Ventilation:** Slots and openings in the cabinet are provided for ventilation to ensure reliable operation of the product and to protect it from overheating. These openings should never be blocked by placing the product on a bed, sofa, rug, or other similar surface. This product should not be placed in a built-in installation such as a bookcase or rack unless proper ventilation is provided or the manufacturer instructions have been adhered to.
11. **Power Sources:** This product should be operated only from the type of power source indicated on the rating label. If you are not sure of the type of power supply to your home, consult your product dealer or local power company. For products intended to operate from battery power or other sources, refer to the operating instructions.
12. **Grounding or Polarization:** This product may be equipped with a polarized alternating-current line plug that has one blade wider than the other. This plug will only fit into the power outlet in one direction. This is a safety feature. If you are unable to insert the plug fully into the outlet, try reversing the direction of the plug. If the plug should still fail to fit, contact an electrician to replace the obsolete outlet. Do not defeat the safety purpose of the polarized plug.
13. **Power-Cord Protection:** Power supply cords should be routed so that they are not likely to be walked on or pinched by items placed upon or against them, paying particular attention to cords at plugs, convenience receptacles, and at the point which they exit from the product.
14. **Protective Attachment Plug:** The product may be equipped with an attachment plug with overload protection. This is a safety feature. See the operating instructions for replacement or directions to reset the protective device. If replacement of the plug is required, be sure the service technician has used a replacement plug that has the same overload protection as the original plug as specified by the manufacturer.



IMPORTANT SAFETY INSTRUCTIONS

- Outdoor Antenna Grounding: If an outside antenna is connected to the product, be sure the antenna system is grounded so as to provide some protection against voltage surges and built-up static charges. Article 810 of the National Electrical Code, ANS/NFPA 70 provides information with regard to proper grounding of the mast and supporting structure, grounding of the lead-in wire to an antenna-discharge unit, size of grounding conductors, location of antenna-discharge unit, connection to grounding electrodes, and requirements for the grounding electrode (see figure).



- Lightning: For added protection for this product, unplug it from the wall outlet and disconnect the antenna or cable system during a lightning storm or when it is left unattended and unused for long periods of time. This will prevent damage to the product due to lightning or power-line surges.
- Power Lines: An outside antenna system should not be located in the vicinity of overhead power lines or other electric light or power circuits, or where it can fall into such power lines or circuits. When installing an outside antenna system, extreme care should be taken to keep from touching such power lines or circuits, as contact with them might be fatal.
- Overloading: Do not overload wall outlets, extension cords, or integral convenience receptacles as this can result in a risk of fire or electric shock.
- Object and Liquid Entry: Never push objects of any kind into this product through openings as they may touch dangerous voltage points or shout-out parts that could result in a fire or electric shock. Never spill liquid of any kind on the product.
- Servicing: Do not attempt to service this product yourself as opening or removing covers may expose you to dangerous voltage or other hazards. Refer all servicing to qualified service personnel.
- Damage Requiring Service: Unplug this product from the wall outlet and refer servicing to qualified service personnel under the following conditions: a) when the power-supply or plug is damaged; b) if liquid has been spilled or if objects have fallen into the product; c) if the product has been exposed to rain or water; d) if the product does not operate normally by following the operating instructions. Adjust only those controls that are covered by the operating instructions as improper adjustment of other controls may result in damage and will often require extensive work by a qualified technician to restore the product to its normal operation; e) if the product has been dropped or damaged in any way; f) when the product exhibits a distinct change in performance—this indicates a need for service.

IMPORTANT SAFETY INSTRUCTIONS

22. **Replacement Parts:** When replacement parts are required, be sure that your service technician has used replacement parts specified by the manufacturer or have the same characteristics as the original part. Unauthorized substitutions may result in fire, electric shock, or other hazards.
23. **Safety Check:** Upon completion of any service or repairs to this product, ask the service technician to perform safety checks to ensure that the product is in proper operating condition.
24. **Wall or Ceiling Mounting:** The product should be mounted to a wall or ceiling only as recommended by the manufacturer.
25. **Heat:** The product should be situated away from heat sources such as radiators, heat registers, stoves, or other products (including amplifiers) that produce heat.

FEATURES

- Integrated 8GB 1" Micro Hard Drive
- Touchpad control with LED backlight
- 1.8" advanced OLED color display
- Plays MP3, WMA, and WAV digital audio files
- Plays MPEG-4 videos
- Plays Digital Music from most online stores and subscription services*
- Music library groups music files by album name, artist name, song title, genre, year and playlist
- Playlist support (WMP format)
- ID3 and LRC Support for SOng and Synchronized Lyric information display
- Integrated FM Radio and Recorder
- Integrated Microphone for Digital Voice Recording
- View photos and slideshows while enjoying your music collection
- USB 2.0 high-speed transfers
- 20 hours of music playback

**Music Service must support Windows Media DRM (WMDRM). WMDRM10 require Windows XP and Windows Media Player 10 or newer.*

TABLE OF CONTENTS

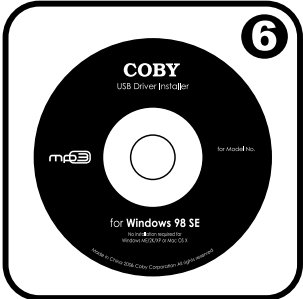
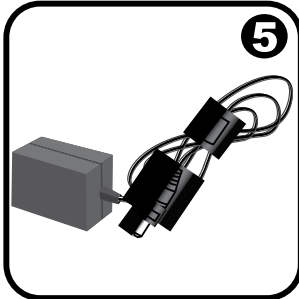
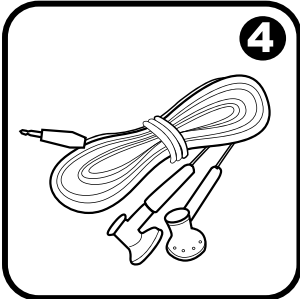
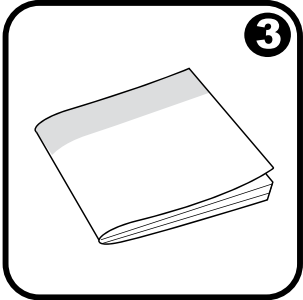
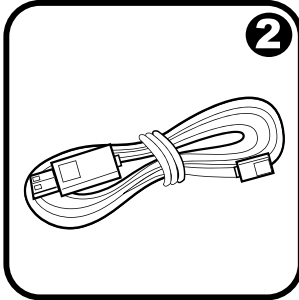
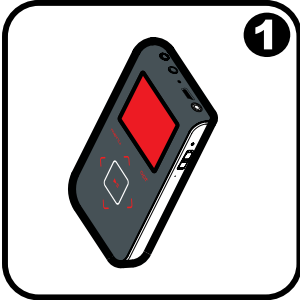
PRECAUTIONS.....	2
IMPORTANT SAFETY INSTRUCTIONS	4
FEATURES	5
TABLE OF CONTENTS.....	6
PACKAGE CONTENTS	8
POWERING YOUR PLAYER.....	9
Charging the Battery.....	9
Turning Your Player On/Off.....	9
Locking/Unlocking Your Player's Keys (Hold).....	9
Resetting Your Player	10
LOCATION OF CONTROLS	11
Top View.....	11
Front View	11
Side View	11
DISPLAY OVERVIEW	12
BASIC OPERATIONS	13
Using the Touchpad Controls	13
Using the Controls to Navigate.....	13
Main Menu Overview	13
Smart Menu Options.....	14
Browsing/Playback	14
Volume	15
EQ (Equalizer).....	15
Repeat.....	15
Shuffle.....	16
Backlight	16
MUSIC MODE.....	17
Browsing Your Music Library	17
Play All	17
Playlists	17
Music Playback Controls	17
QUICK PLAY	18
Quick Play Controls	18
PHOTO MODE.....	19
Browsing Your Photo Library	19
Displaying Your Photos as a Slideshow	19
VIDEO MODE.....	20
Browsing Your Video Library	20

TABLE OF CONTENTS

RECORD MODE.....	21
Voice Recording.....	21
SETTING MODE.....	22
USB CONNECTIONS.....	23
Minimum PC Requirements.....	23
USB Mode Auto-Detection (MSC/MTP).....	23
USB Driver Installation (Required for Windows 98 SE Only).....	24
Connecting to a Computer.....	25
USB-MTP Mode.....	25
USB-MSC Mode.....	26
Transferring Files.....	26
USB-MTP Mode.....	27
USB-MSC Mode.....	27
Disconnecting from a Computer.....	28
USB-MTP Mode.....	28
USB-MSC Mode.....	28
Build Music Library (USB-MSC Mode Only).....	28
VIDEO CONVERSION.....	29
Installation.....	29
Converting Video.....	29
WINDOWS MEDIA PLAYER.....	31
Windows Media Player 9 (WMP9).....	31
Music File Transfers.....	31
Windows Media Player 10 (WMP10).....	32
Music File Transfers.....	32
Creating Playlists.....	33
Automatic Windows Media Playlist Synchronization.....	35
TROUBLESHOOTING.....	38
SPECIFICATIONS.....	40

PACKAGE CONTENTS

Please make sure that the items shown below are included in the package. Should an item be missing, please contact the local retailer from which you purchased this product.



1. COBY MP-C983 MP3 Player
2. USB Cable
3. Instruction Manual
4. Professional Stereo Earphones
5. AC Adapter
6. Installation CD

POWERING YOUR PLAYER

Charging the Battery

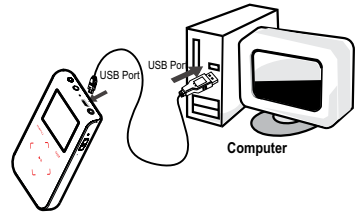
Your player has an integrated rechargeable battery that will provide up to 20 hours of music play time.



The battery should be charged fully (minimum 4 hours) before its initial use to ensure optimum lifetime performance.

To charge your player:

- **USB Charge:** Your player can be charged through a PC USB connection. Plug one end of the USB cable into the player's USB port and plug the other end into the USB port of a powered-on computer.
 - When connected to a USB hub, the hub must be self-powered to charge the player's battery.
 - File transfers will extend the charging time.



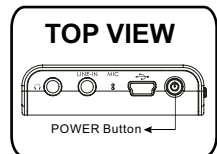
The battery used in this device may present a fire or chemical burn if mistreated. Do not disassemble, incinerate, or heat the battery.

Do not connect the player to a power source other than that which is indicated here or on the label as this may result in the risk of fire or electric shock.

Do not handle the power plug with wet hands. Doing so may cause electric shock.

Turning Your Player On/Off

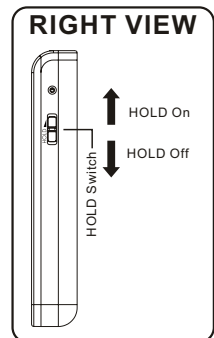
- To turn the player on, press and hold the POWER button until you see the "Initializing" screen.
- To turn the player off, press and hold the POWER button until you see the "Power off". Don't release until the LCD display off.



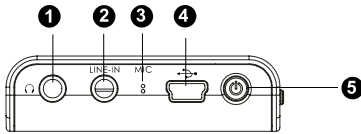
Locking/Unlocking Your Player's Keys (Hold)

When engaged, the Key Lock feature disables your player's controls to prevent accidental key presses when it is in your pocket or bag.

- To lock the player, slide the Power/Key Lock switch to the up. The Lock icon will appear on-screen.
- To unlock the player, slide the Power/Key Lock switch to the down from the Lock position.

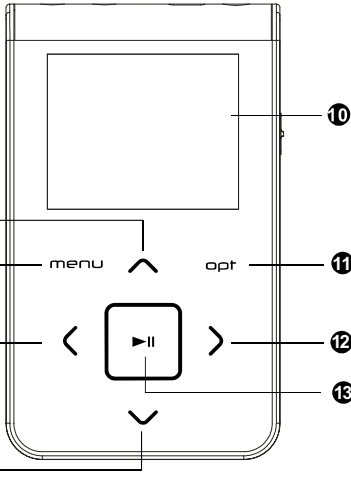


LOCATION OF CONTROLS



Top View

1. Headphone Jack
2. Line-In Jack
3. Microphone
4. USB Port
5. Power On/Off button



Front View

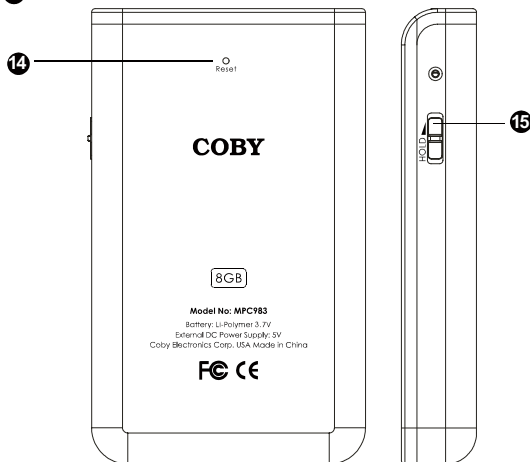
6. Up / Volume +
7. Menu
8. Left / Previous
9. Down / Volume 1
10. LCD Display
11. Opt
12. Right / Next
13. Play/Pause

Back View

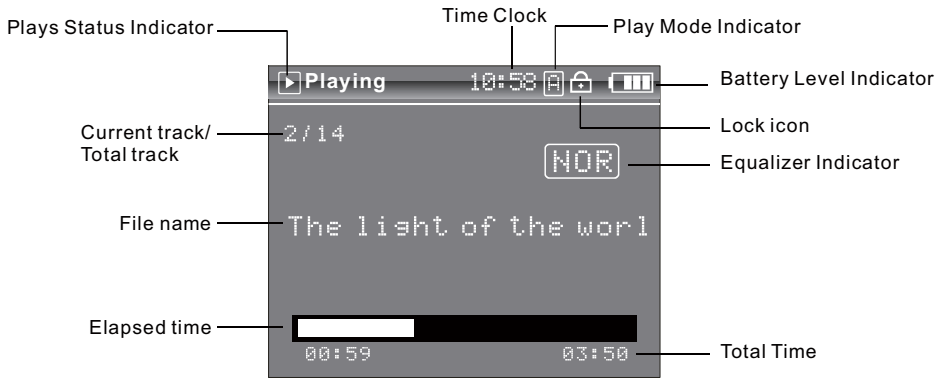
14. Reset

Side View

15. HOLD Switch



DISPLAY OVERVIEW



BASIC OPERATIONS

Using the Touchpad Controls

Your player comes equipped with a touch-sensitive control pad. To use the controls, touch the arrow keys on the front of the player lightly just as you would a button and the controls will light up. If you touch and hold a key, it will register as a continuous button press.

Using the Controls to Navigate

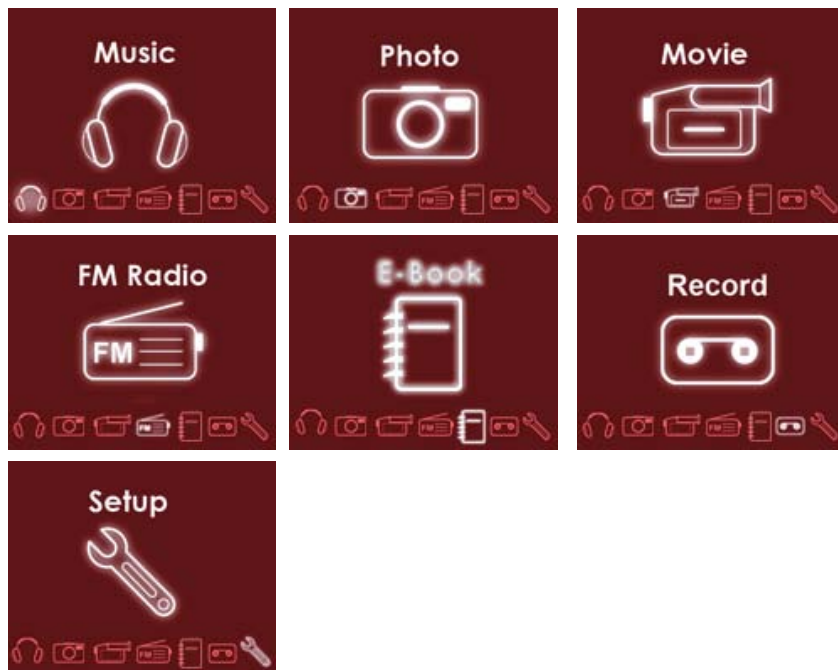
To navigate through the different menu options and files on your player:

- Touch the Arrow keys to move the selection in the direction of the arrow.
 - UP: Moves the selection up.
 - DOWN: Moves the selection down.
 - RIGHT: Enter a selection (i.e., confirm the selection)
 - LEFT: Go back to the previous screen (i.e., "Cancel").
- Press the MENU button to view the Smart Menu.
- Press and hold MENU to return to the Main Menu at any time.

Main Menu Overview

The Main Menu gives you access to the different function modes of your player. To access the Main Menu at any time, press the MENU button.

- Press UP or DOWN to select a mode and then press RIGHT to Enter.



MUSIC MODE

Enter Music mode to play your MP3, WMA, OGG or WAV audio files.

To enter MUSIC mode, select and confirm from the Main Menu.

Upon entering Music mode, you will have the following options: Artist, Album, Song, Genre, Year, Playlist and Favourite.

Playback Controls

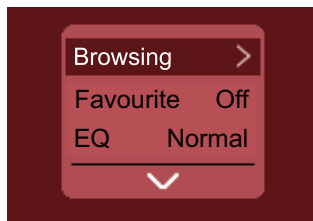
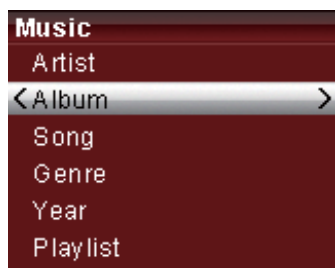
Select a track and press RIGHT to start playback (see the [Music Mode](#) or [Video Mode](#) section for more information). While the track is playing:

- Press RIGHT to play the next track.
- Press LEFT to play the previous track.
- Press and hold RIGHT to fast forward through the track.
- Press and hold LEFT to reverse through the track.
- Press UP to pause playback. Press UP again to resume playback
- Press DOWN to display the Volume Bar.

Smart Menu Options

The Smart Menu gives you quick access to your player's option settings. To access the Smart Menu at any time, press "Opt".

The Smart Menu options are Browsing/Playback, Volume, EQ, Repeat, Shuffle, and Backlight.



Browsing/Playback

This option allows you to browse your media library while a song is being played in the background. Whether this option appears as "Browsing" or "Playback" depends on what you were doing when you accessed the Smart Menu.

- From the "Playing" screen, select "Browsing" to browse your media library.
 - You can also press MENU to return to the Main menu to enter another mode (e.g., you can enter Photo mode to view pictures while music is playing).
- To return to the "Playing" screen, select "Playback" from the Smart Menu.

MUSIC MODE

Favorite On/Off

Use the Favourite function to quickly add a song to your Favourites Playlist. Favourite tracks can be found in by selecting **Music > Favourite**.

EQ (Equalizer)

The Equalizer option optimizes the way your player processes audio signals. The Equalizer options are Normal, Rock, Jazz, Classic, Pop, and User. Select the option which best suits the music you are listening to.

To change the Equalizer options:

1. Highlight EQ in the Smart Menu.
2. Press RIGHT to change the Equalizer setting.

The User EQ setting can be customized in the “Setting” menu; please see the Setting Mode section for more information.

Repeat

The Repeat options can set your player to play tracks again.

To change the Repeat options

1. Highlight Repeat in the Smart Menu.
2. Press RIGHT to change the Repeat setting (Off, One, All).

Shuffle

The Shuffle options can set your player to play tracks in a random order.

To change the Shuffle options

1. Highlight Shuffle in the Smart Menu.
2. Press RIGHT to change the Shuffle setting (Off, On).

Speed

Use the Speed function to adjust playback tempo. The Play options are: 70%, 80%, 90%, 100%, 110%, 120% and 130%.

1. Highlight Speed in the Smart Menu.
2. Press RIGHT to change the Speed setting (70%, 80%, 90%, 100%, 110%, 120% and 130%).

Introduction

Set the Introduction function On to play the first 5 seconds of each track.

1. Highlight Introduction in the Smart Menu.
2. Press RIGHT to change the Introduction setting (On or Off).

PHOTO MODE

Enter Photo mode to display your JPEG photo files.

To enter Photo mode, select and confirm PHOTO in the Main menu.

Browsing Your Photo Library

Upon entering Photo mode, you will see a preview list of all JPEG photos on your player.

- Press the LEFT/RIGHT/UP/DOWN keys to highlight a photo and press ►|| to display.
- While a photo is displayed:
 - Press DOWN to display the next photo in the list
 - Press UP to display the previous photo in the list
 - Press LEFT to return to the photo list.



Smart Menu Options

The Smart Menu gives you quick access to your player's option settings. To access the Smart Menu in Photo Mode, press "Opt".

The Smart Menu options are Playback, Browsing, Set Wallpaper, SlideShow and Show Time.

Playback

Highlight and select this option to back to the Music Playing mode.

Browsing

This option allows you to browse your photo library while a picture is being display.

Set Wallpaper

This option allows you to set the current picture as a Wallpaper when the player is in Music Playing mode.

1. Highlight and select Set Wallpaper in the smart Menu.
2. Press ►|| to confirm.

SlideShow

Set "SlideShow" function On will automatically display all your photos in sequence.

1. Highlight and select SlideShow in the smart Menu.
2. Press RIGHT to change the SlideShow setting (On or Off).

Show Time

This option allows you to set the time interval between slides.

1. Highlight and select Show Time in the smart Menu.
2. Press RIGHT to chang the Show Time setting (1s - 10s).

VIDEO MODE

Enter Video mode to play your XviD-encoded AVI video files.

To enter Video mode, select and confirm VIDEO in the Main menu.

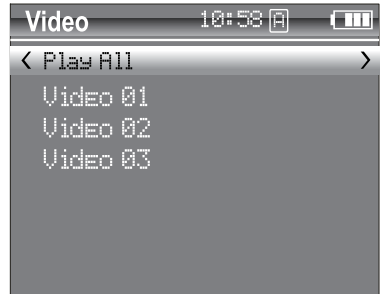


The MP-C983 supports playback of XviD-encoded AVI files. Please see the [Video Conversion](#) section for details on how to create video files that are compatible with your player.

Browsing Your Video Library

Upon entering Video mode, you will see a list of all AVI videos on your player.

- Press the UP/DOWN keys to highlight a video and press ►|| to play it.
- While a video is playing:
 - Press ►|| to pause playback. Press ►|| again to resume playback.
 - Press RIGHT to play the next track.
 - Press LEFT to play the previous track.
 - Press and hold RIGHT to fast forward through the track.
 - Press and hold LEFT to reverse through the track.
 - To return to the video list, pause playback and press LEFT.



FM RADIO MODE

Enter FM Radio Mode to listen the FM Radio broadcasts.



You must have a pair of headphones connected to the headphone jack to receive FM broadcasts; your player will utilize the headphone cord as an antenna.

To enter FM Radio Mode, select and confirm FM Radio from the Main Menu.

Basic FM Radio Operation

Upon entering FM Radio mode, you can tune into stations manually(Normal) or by using preset stations(Preset).

- Press ►|| to toggle between Normal and Preset tuning modes.
 - Normal: Listen to Manually-Tuned Channels.
 - Press RIGHT to tune to higher frequencies; press LEFT to tune to lower frequencies.
 - Preset: Listen to Preset Channels.
 - Press RIGHT to tune to higher Preset channels or LEFT to tune to lower Preset channels.
- To auto-seek the next available broadcast station, press and hold LEFT or RIGHT.
- Press and hold ►|| to automatically detect and save as a preset station any frequency with a signal. This will overwrite any previously saved preset stations.

Smart Menu Option

The Smart Menu gives you quick access to your player's option settings. To access the Smart Menu in Recording Stop Mode, press "Opt".

The Smart Menu options are Add Preset/Del Preset, Start Record, Track, Sense and Area.

Add Preset/Del Preset

- When the player is in Normal Tuning mode, this section will display "Add Preset", highlight and confirm Add Preset to manually save the current station as a preset.
- When the player is in Preset Tuning mode, this section will display "Del Preset", highlight and confirm Del Preset to delete the current preset station.

Start Record

This section allows you to make recordings of FM Radio broadcasts.

1. Tune to the FM broadcast station you would like to record.
2. Press Opt.
3. Highlight and press RIGHT or ►|| to start FM Recording.

During recording:

- To pause recording, press ►|| ; press ►|| again to resume recording.
- To stop and save the recording, press MENU. The recorded file will be named "FM-RCXXX.WAV" where XXX corresponds to the numerical sequence in which the recording was made (numbering starts from 00001).

FM RADIO MODE

Track

This section allows you to set the reception modes between Stereo and Mono.

- Highlight and select Track from the Smart Menu.
- Press RIGHT to change the Track setting (Stereo or Mono).

Sense

This section allows you to set the sensitivity of the Auto-Scan feature among Low, Middle and High.

- Highlight and select Sense from the Smart Menu.
- Press RIGHT to change the Sense setting (Low, Middle or High).

Area

This section allows you to set the the FM frequency range area among World, Europe and Japan.

- Highlight and select Area from the Smart Menu.
- Press RIGHT to change the Area setting (World, Europe or Japan).

E-BOOK MODE

Enter E-BOOK mode to read TXT E-book files.

To enter E-BOOK mode, select and confirm E-BOOK from the Main Menu. Upon entering E-BOOK mode, you can use the file

RECORD MODE

Enter Record mode to make voice recordings through external audio sources: Microphone or Line-In.

To enter Record mode, select and confirm RECORD in the Main menu. Upon entering RECORD mode, you will see a list of previously recorded files (if available).

Smart Menu Options

The Smart Menu gives you quick access to your player's option settings. To access the Smart Menu in Recording Stop Mode, press "Opt".

The Smart Menu options are Playback, REC, Start Record, MIC, Line-In, and FM.

Playback

Select Playback to back to the Music Playing Mode.

REC

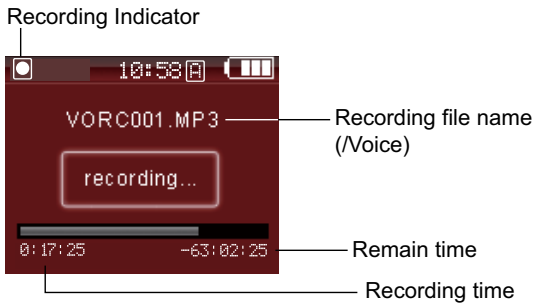
This section allows you change the recording type.

1. Highlight and select REC from the Smart Menu.
2. Press RIGHT to change the REC setting (Voice or Line-in)

Start Record

Select Start Record to start recording from the external audio source that you have set in the REC section.

1. Highlight and select Start Record from the Smart Menu.
2. Press RIGHT or ►|| to start recording.
3. Press ►|| again to pause the recording. Press MENU to stop and save the recording. The



recorded file will be named "VORCXXX.WAV" or AUDIXXX.WAV where XXX corresponds to the numerical sequence in which the recording was made (numbering starts from 001.)

You can play your recorded files using the same controls as you would in Music mode.

RECORD MODE

MIC

This section allows you to set the Microphone Recording Quality.

1. Highlight and select MIC from the Smart Menu.
2. Press RIGHT to change the MIC setting (Low, Middle or High).

Line-In

This section allows you to set the Line-In Recording Quality.

1. Highlight and select Line-In from the Smart Menu.
2. Press RIGHT to change the Line-In setting (Low, Middle or High).

FM

1. Highlight and select FM from the Smart Menu.
2. Press RIGHT to change the FM setting (Low, Middle or High).



Higher-quality recording will take up more memory on your player.

SETTING MODE

Enter the Setting mode to set your player's system options.

To enter Setting mode, select and confirm SETTING in the Main menu.

Upon entering Setting mode, you will have the following options: Sound, Display, General, Time, Rec Quality and Information.

Press UP/DOWN to select a setting and press ►|| to confirm. Press LEFT to back to the previous menu.

Sound

Select and confirm SOUND in the setting menu to set options relating to the way audio is processed by your player. The sound options are: EQ, User, Balance and Beep.

EQ(Equalizer)

Set a digital equalizer preset. The options are: Normal, Rock, Jazz, Classic, Pop and User.

User

Set your customer, user-defined equalizer setting.

1. Press LEFT or RIGHT to select a band to adjust. Select the bands to the left to adjust low (bass) frequencies; select the bands in the middle to adjust mid-frequencies and select the bands to the right to adjust high frequencies (treble).
2. Press UP to raise the selected band level; press DOWN to lower the selected band level.
3. Press ►|| when you are finished to save.

Once this has been set up, you can access this digital equalizer preset through the equalizer menu (please refer to SETTING > SOUND or MUSIC > Smart Menu > EQ section for details).

Balance

Set the left-channel and right-channel levels.

1. Press LEFT to increase the left-channel level(Left); press RIGHT to increase the right-channel level(Right). The center-position (Middle) will result a balanced left/right stereo mix.
2. Press ►|| when you are finished to save.

Beep

Set the beep-tone On or Off when you press a key.

1. Press UP or DOWN to select On or Off.
2. Press ►|| when you are finished to save.

Display

Select and confirm DISPLAY in the setting menu to set options relating to your player's display. The Display options are: Backlight, Brightness, Language and Lyric.

SETTING MODE

Backlight

Set the duration of time (in seconds) that the LCD backlight remains on after a key-press.

1. Press UP or DOWN to select a time(5s, 10s, 30s or 60s).
2. Press ►|| when you are finished to save.

Brightness

Set the Brightness of LCD Screen.

1. Press LEFT or RIGHT to decrease/increase the screen's brightness. A setting of "1" is darkest; a setting of "5" is brightest.
2. Press ►|| when you are finished to save.

Language

Set the language of the player's on screen menu. The language options are: English, French, German, Italian, Spanish, CHS, Japanese, Korean, Portugal and Russian.

1. Press UP or DOWN to select a language option.
2. Press ►|| when you are finished to save.

Lyric

Set song lyric display support on or off. Lyric display requires ".LRC" lyric file which may be found on the internet or may be created with a Lyric file creator. Lyric file can contain synchronized timing information as well as lyric information.

Lyric files must have the same name as its corresponding music file (e.g., "SongTitle1.lrc" and "SongTitle1.mp3") and must be placed in the same directory.

1. Press UP or DOWN to select On or Off.
2. Press ►|| when you are finished to save.

General

Select and confirm GENERAL in the setting menu to set options relating to your player's general features. The general options are: Repeat, Shuffle, Auto Play, Resume, Wallpaper, USB Mode and Load Default.

Repeat

Set Repeat Play Mode on/off, One or All. Select One to repeat current track; select All to play all tracks sequentially.

1. Press UP or DOWN to select a repeat option.
2. Press ►|| when you are finished to save.

Shuffle

Set Shuffle play mode on or off. Select On to play all tracks randomly.

1. Press UP or DOWN to select On or Off.
2. Press ►|| when you are finished to save.

Auto Play

Set the Auto Play feature on or off. When Auto Play is set to ON, your player will automatically resume playback from where it left off when it wakes from standby.

SETTING MODE

1. Press UP or DOWN to select On or Off.
2. Press ►|| when you are finished to save.

Resume

Set the Resume feature on or off. When Resume is set to ON, your player will automatically resume playback when it wakes from standby.

1. Press UP or DOWN to select On or Off.
2. Press ►|| when you are finished to save.

Wallpaper

Set the Wallpaper feature on or off. When Wallpaper is set to ON, the background will display with the picture that you have set in PHOTO mode (please refer PHOTO > Smart Menu > Wallpaper section for more details).

1. Press UP or DOWN to select On or Off.
2. Press ►|| when you are finished to save.

USB Mode

Set the USB Charge on or off. When USB Mode is set to MSC, your player will start charging when it is connected to a computer. When it is set to Auto, your player will connect to the computer automatically.

1. Press UP or DOWN to select MSC or Auto.
2. Press ►|| when you are finished to save.

Load Default

Restore all of the player's setting to their factory-default state.

1. Press UP or DOWN to select Yes or No.
2. Press ►|| when you are finished to save.

Time

Select and confirm TIME in the setting menu to set options relating to your player's internal clock features. The time options are: Sleep time, Data/Time and Auto Page.

Sleep time

Set the sleep time (in minutes). The player will automatically turn off after the set amount of time.

1. Press UP or DOWN to select a Sleep option (Off, 10 Min, 30 Min, 60 Min or 120 Min).
2. Press ►|| when you are finished to save.

A setting of "Off" will disable the Sleep time feature.

Data/Time

Set the internal clock of your player.

1. Press LEFT or RIGHT to select which date or time field to adjust.
 - For the date, the fields are Year, Month, and Date (from left to right).
 - For the time, the fields are Hour, Minute, and Seconds (from left to right).
2. Press UP or DOWN to adjust the value of the selected fields. Press LEFT or RIGHT to move to the next field.

SETTING MODE

3. Press ►|| when you are finished to save.

Auto Page

Set the Auto Page function on or off when the player is in E-BOOK mode.

1. Press UP to DOWN to select On or Off.
2. Press ►|| when you are finished to save.

Rec Quality

Select and confirm REC QUALITY in the setting menu to set options relating to your player's Recording Quality. The Rec Quality options are: MIC, Line_in, FM and VAD.

High-quality recordings will sound best, but will take up more of the player's memory.

MIC

Set the quality of recordings made through the integrated microphone. The options are: Low, Middle and High.

1. Press UP or DOWN to select a MIC option (Low, Middle or High).
2. Press ►|| when you are finished to save.

Line_in

Set the quality of recordings made through the Line-in Jack. The options are: Low, Middle and High.

1. Press UP or DOWN to select a Line-in option (Low, Middle or High).
2. Press ►|| when you are finished to save.

FM

Set the quality of recordings made from the FM Radio. The options are: Low, Middle and High.

1. Press UP or DOWN to select a FM option (Low, Middle or High).
2. Press ►|| when you are finished to save.

VAD

Set the VAD feature on or off. When this is set to ON, your player will detect audio signals from the integrated microphone and automatically pause recording when no signal is detected.

1. Press UP or DOWN to select On or Off.
2. Press ►|| when you are finished to save.

Information

Select and confirm INFORMATION in the setting menu to view information about your player. The information options are: Total Files and Version.

- Total Files: View total number of files that located on your player.
- Version: View information about your player's firmware.

USB CONNECTIONS

Connect the MPC983 to a computer with the USB 2.0 cable provided to:

- Transfer files to and from your player
- Perform basic file management functions.

USB Driver Installation (Required for Windows 98 SE Only)

It is not necessary to install the USB driver if your computer is running Microsoft Windows ME/2000/XP or newer, or Macintosh OS X. Computers running these operating systems will recognize your player automatically when connected.

If your computer is running Windows 98 SE:

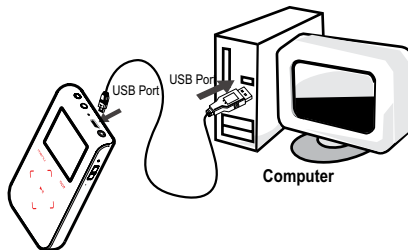
1. Insert the Installation CD into your computer's CD or DVD drive. Make sure to place the mini-CD in the center, recessed well of the drive tray.
2. Navigate to MY COMPUTER and double-click on the CD/DVD drive icon (usually "D:").
3. Double-click on the folder "Win98 USB Drivers" and then on the folder "english".
4. Double-click on the SETUP icon (SETUP.EXE) to start the USB driver installation program.
5. Follow the on-screen instructions to complete the installation and then restart your computer.



Mini-CDs should only be used in normal tray-loading CD/DVD drives. Mini-CDs may be used in slot-loading drives with the proper adapter; please contact your computer or drive manufacturer for more information.

Connecting to a Computer

Connect the player to your computer with the supplied USB cable. Upon connection:



- Your computer will automatically recognize the player as an MTP Device. An icon representing your player will appear under "Audio Devices" when you open "My Computer".
- It may take Windows several minutes to recognize and set up the device the first time it is connected depending on your hardware configuration.



For more information and support regarding music transfer and synchronize with Windows Media Player (WMP), please see the help section including with WMP (Click Help > Synchronizing Content to Devices).

Transferring Files

The USB 2.0 High-Speed connection makes it easy to transfer music, video, photo, and text files (or any other data) quickly between the player and your computer. Simply use the player as you would a floppy disk using basic operating system commands.

USB CONNECTIONS

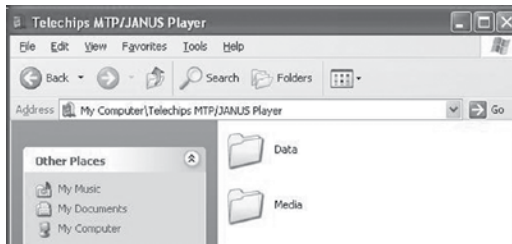
If you need further assistance with transferring files, please refer to your operating system's instruction manual or on-screen help. If you are using media management software such as iTunes, Winamp, or Windows Media Player, please refer to their documentation for support.



Do not disconnect or otherwise interrupt the player during transmission - this could damage or corrupt the player's firmware or your files. If the player is accidentally disconnected and is not working properly, reset your player (see the [Powering Your Player](#) section for details).

Microsoft Windows

1. Double-click the "My Computer" icon on your desktop and then double-click the MPC983 icon (MTP Multimedia Player).



2. Your player contains two folders: Data and Media.
 - Drag your media files to the Media folder (e.g., MP3, WMA files).
 - Drga all other types of files to the Data folder for storage. Data files are only visible from a computer; these files will not be available from within the player itself.

Macintosh OS X

1. Open a finder window. Located the files you would like to transfer from your computer. Select the files/folders with the mouse and press APPLE-C(copy) on the keyboard.
2. Click on the Removable Disk icon located on the left side of the finder window. The computer will display all files and folders currently stored in the player.
3. Press APPLE-V(paste) on the keyboard to transfer the files you selected in Step 1 to the player.

USB CONNECTIONS

Disconnecting from a Computer

Disconnect your player as instructed below to detect data loss or file/firmware corruption.

Microsoft Windows

1. Double-click the green arrow in the taskbar located on the lower-right side of the computer screen (Safely Remove Hardware).



2. **Safely Remove Hardware:**
Select "USB Mass Storage Device" from the list that appears and then click on "Stop".



Stop a Hardware Device: Select "USB Mass Storage Device" from the list that appears and then click on "OK".

3. When the "Safe to Remove Hardware" window appears, click the OK button and disconnect the USB cable from the player and your computer.

Macintosh OS X

1. On the left side of the Finder Window, identify the appropriate Removable Disk icon.
2. Click on the "Eject" arrow on the right of the Removable Disk icon.
3. Disconnect the USB cable from the player and your computer.



VIDEO CONVERSION

Use the video conversion software utility included on the Installation CD to create video files that are suitable for playback on the MP-C983.

Your player supports XviD-encoded AVI files with the following specifications:

- 128 x 128 resolution at 15 frames per second (fps)

Note:

The video conversion software is included for your convenience and is compatible with Microsoft Windows operating systems only. There are many other video conversion utilities available for download or purchase on the internet.

Because the program is licensed free of charge, there is no warranty for the program, to the extent permitted by applicable law. Except when otherwise stated in writing the copyright holders and/or other parties provide the program "as is" without warranty of any kind, either expressed or implied, including, but not limited to, the implied warranties of merchantability and fitness for a particular purpose. The entire risk as to the quality and performance of the program is with you. Should the program prove defective, you assume the cost of all necessary servicing, repair or correction.

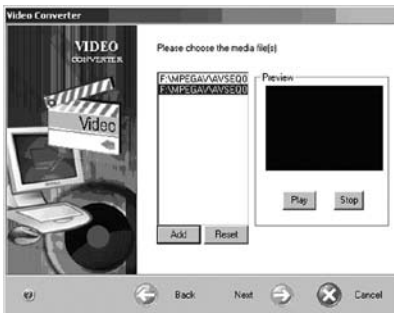
In no event unless required by applicable law or agreed to in writing will any copyright holder, or any other party who may modify and/or redistribute the program as permitted above, be liable to you for damages, including any general, special, incidental or consequential damages arising out of the use or inability to use the program (including but not limited to loss of data or data being rendered inaccurate or losses sustained by you or third parties or a failure of the program to operate with any other programs), even if such holder or other party has been advised of the possibility of such damages.

Installation

Please refer to the Installation CD for software installation procedures.

Converting Video

1. Select the source video file to convert. The source file must be a generic AVI or MPEG-1 format.
2. Start the video conversion software. Click "Add" and choose the source file (you can preview the video in the right panel) and then click "Next".



WINDOWS MEDIA PLAYER

Windows Media Player 9 (WMP9)

You can use Windows Media Player 9 (WMP9) and a USB-MSC connection to manage your music media library with Microsoft Windows 98SE/ME/2000.

Music File Transfers

To transfer files using WMP9:

1. Run Window Media Player 9
2. Connect your player to the computer
3. Select "Copy to CD or Device".
4. Drag the desired songs, photos, or converted video files from the PC to the left pane.
5. Select "Removable Disk".
6. Click "Copy".



WINDOWS MEDIA PLAYER

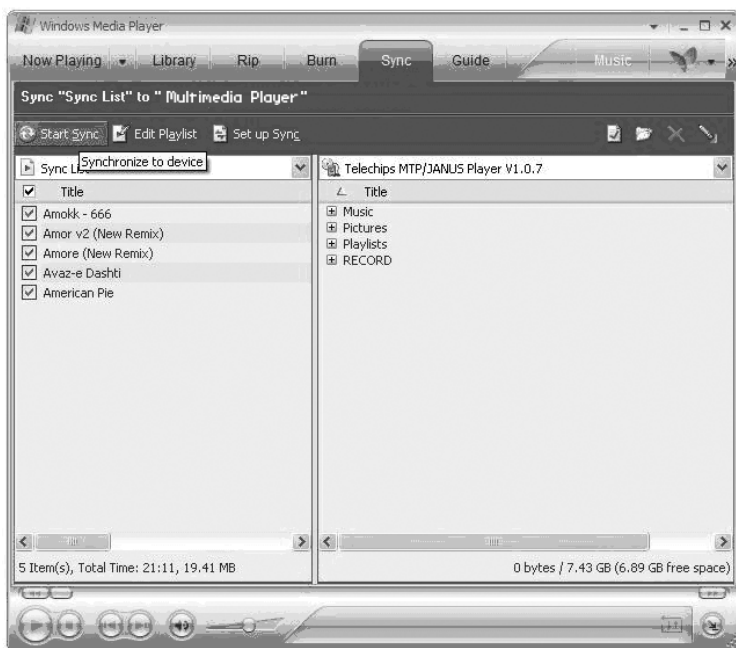
Windows Media Player 10 (WMP10)

You can use Windows Media Player 10 (WMP10) and a USB-MTP connection to manage your music media library with Microsoft Windows XP or newer.

Music File Transfers

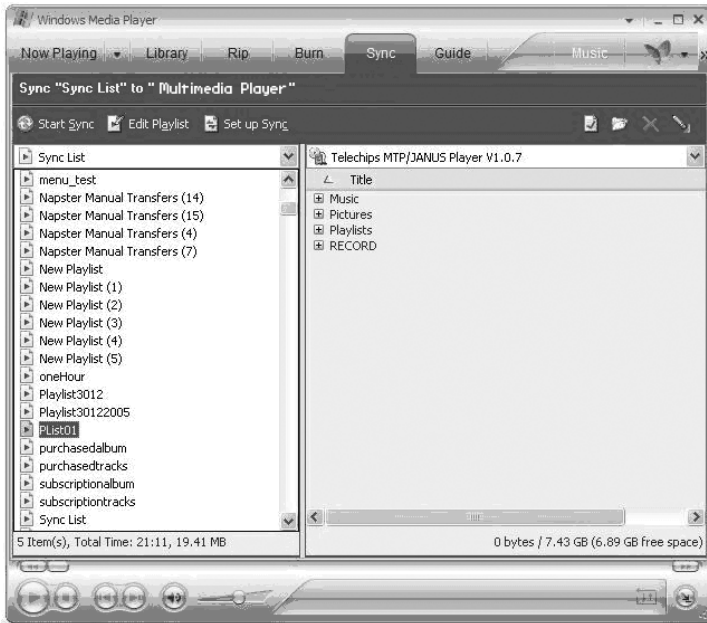
To transfer files using WMP10:

1. Run Window Media Player 10
2. Connect your player to the computer. A "Device Setup" window will appear.
3. In the "Device Setup" window, choose "Synchronize this device with this library for this session only" and click "Finish".
4. Select "Sync". There are 2 ways to sync your files with your player:
 - **Drag your songs, photos, or converted video files to the sync list on the left hand side.** Click "Start Sync" to start transferring the selected files.



WINDOWS MEDIA PLAYER

- **Select a playlist from the “Sync List” drop-down menu.** Click “Start Sync” to start transferring the files in the selected playlist.



For more information and support regarding music transfer and synchronization with Windows Media Player (WMP), please see the help section included with WMP (click Help > Synchronizing Content to Devices).

Creating Playlists

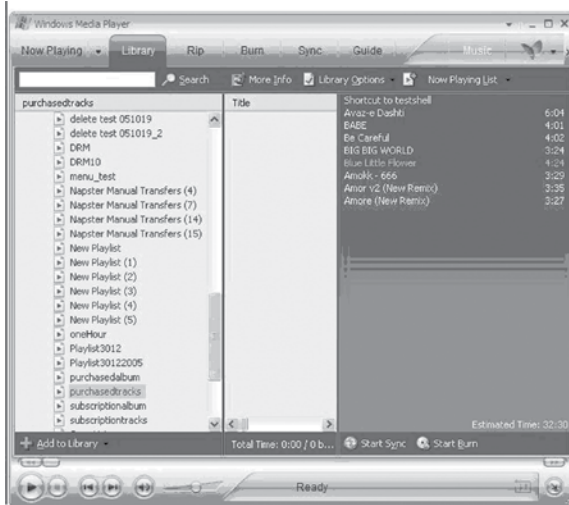
Playlists are an easy way to organize and store your favorite music mixes so you can listen to them whenever you want.

When a playlist is transferred using Windows Media Player, every song in the playlist will be transferred as well.

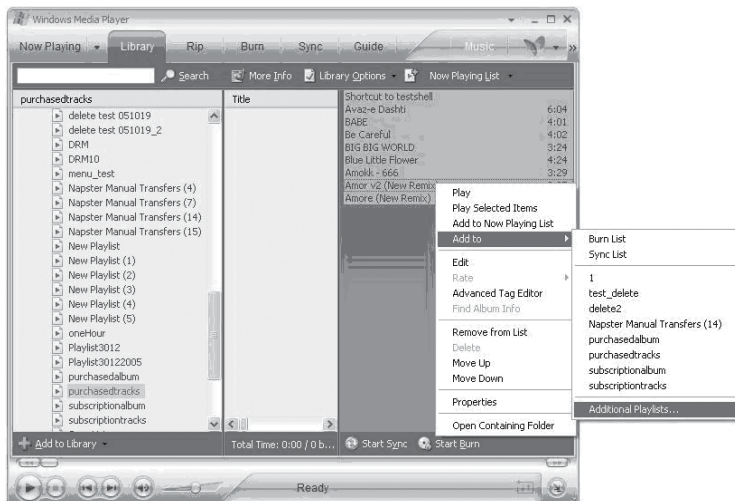
WINDOWS MEDIA PLAYER

To create playlists using WMP10:

1. Run Window Media Player 10
2. Select “Library” and then drag the desired song(s) to the “Now Playing List” on the right side.



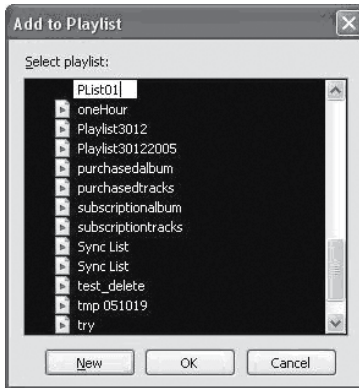
3. Highlight all of the songs in the “Now Playing List” and then use the mouse to right-click the list. Choose “Add to” and then “Additional Playlists...”



An “Add to Playlist” window will appear.

WINDOWS MEDIA PLAYER

4. Select “New” and enter the playlist name, then click “OK”. A new playlist will be created.

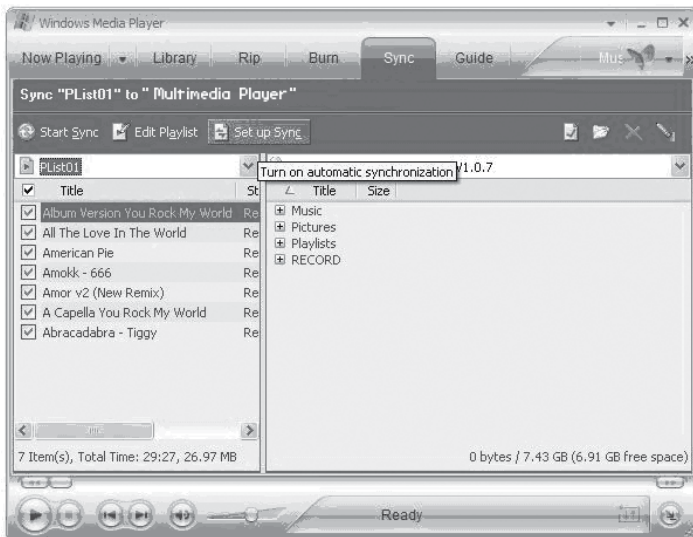


Automatic Windows Media Playlist Synchronization

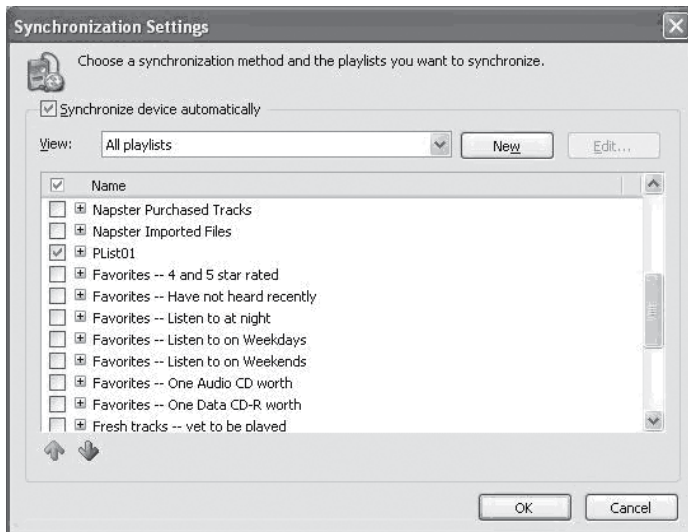
By default, WMP is set to transfer and synchronize files manually. You can choose to have Windows Media Player automatically synchronize your playlists when you connect your player to the computer.

To change the synchronization settings:

1. Connect your player with the computer and run Window Media Player 10.
2. In the SYNC menu, click the “Set up Sync” button. A “Synchronization Settings” window will appear.
3. Check “Synchronize device automatically” and check the playlist(s) you want to sync.



4. Click “OK” to start the synchronization.



5. When synchronization is complete, disconnect your player from the computer.
6. Turn on your player and select “Music”.
7. The synchronized playlist(s) from WMP will have been added under the “Playlist” category.

FIRMWARE UPDATES

From time to time, COBY may release firmware updates to improve MP-C983 performance or to add additional features. Please check the COBY website at www.cobyusa.com periodically to see if new firmware (and update instructions) have been released for your player.

If you are experiencing abnormal behavior with your player, you may choose to first restore (format) the player and then update its firmware.

TROUBLESHOOTING

If you have a problem with this player, please read the troubleshooting guide below and check our website at www.cobyusa.com for Frequently Asked Questions (FAQs) and firmware updates. If these resources do not resolve the problem, please contact Technical Support.

COBY Electronics Technical Support

Hours: Monday to Friday, 8:30 AM–11:00 PM EST
Saturday to Sunday, 9:00 AM–11:00 PM EST

Email: techsupport@cobyusa.com

Phone: 800-681-2629 or 718-416-3197

Web: www.cobyusa.com

The player does not turn on.

- The battery level may be too low. Try charging the player or operate the player on AC power.
- Ensure that the Lock switch is disengaged.
- Reboot the player (slide and hold the Power/Lock switch to the right for several seconds) and try again.

The player does not turn charge when connected to a computer (USB charge).

- Reboot the player (slide and hold the Power/Lock switch to the right for several seconds) and try again.

There is no sound during playback.

- Check the volume level.
- Ensure that the headphones are attached securely to the player.

The sound quality of the music is poor.

- Try playing the file on your computer. If the sound quality is still poor, try downloading the file again or re-encoding the file yourself.
- Ensure that the bit rate of the file is not too low. The higher the bit rate of the file, the better it will sound. The minimum recommended bitrate is 128kbps for MP3s and 96kbps for WMAs.
- Ensure that the headphones are attached securely to the player.

The buttons do not work.

- Ensure that battery is charged or that the player is operating on AC power.
- Ensure that the Lock switch is disengaged.

The player will not play my music file.

- Ensure that the file is in a compatible format (MP3, WMA, or WAV).
- The file may be copy-protected. Use Windows Media Player to transfer the file.
- The file may be copy-protected. Ensure that the license has not expired.

The LCD characters are corrupted.

- Ensure that the correct language has been selected. Try transferring some songs and restart the player to automatically rebuild the Music Library.

TROUBLESHOOTING

The player will not play my video file.

- Ensure that the video file will play on your computer using Windows Media Player 10. If the file works on the computer, use the same computer to convert the video.

I cannot transfer files to the player.

- Ensure that your computer is running a supported operating system.
- If you are running Microsoft Windows 98 SE, ensure that the USB driver has been properly installed.
- Ensure that the supplied USB cable is securely attached to the player and the PC, or try using another USB cable.
- If you have connected the player through a USB hub, try connecting the player directly to your computer.
- Ensure that the player's memory capacity is not full.
- Ensure that there are less than 2500 items loaded on the player.

I transferred files to my player but they are missing from the Music Library

- Ensure that the file is in a supported format (MP3, AVI, JPG, WAV, WMA).
- Ensure that there are less than 2500 items loaded on the player.
- If the player is in MTP mode, ensure that there are less than 2500 items loaded on the player.

I cannot see some files on my computer.

- Ensure that the correct USB mode is in use (MSC or MTP). Files transferred in one mode will not be seen when connected in another mode.

The player has malfunctioned.

- Reboot the player (slide and hold the Power/Lock switch to the right for several seconds).
- Try updating the player's firmware. Please refer to the [Firmware Update](#) section of this manual for detailed instructions.

SPECIFICATIONS

Display Type	1.8" True-Color OLED
Display Resolution	128 x 128
Memory	8GB 1" Micro-HDD 2500 file/folder system limit
Audio Format Support	MP3, WMA, WAV
Video Format Support	MPEG-4 (XviD): 128 x 128, 15fps
Photo Format Support	JPEG
Song Info Support	ID3, Windows Media
PC Interface	USB 2.0 High-Speed Dual-Mode (MSC and MTP)
DRM Support	Windows Media DRM 10 (Requires Windows XP and Windows Media Player 10 or higher) Windows Media DRM 9 (Requires Windows 98SE and Windows Media Player 9 or higher)
Plug and Play Support	Windows 98SE/2000/ME/XP or newer
Audio Output	3.5mm Stereo (Headphone)
Audio Input	Integrated Microphone
Menu Language Support	English, Spanish, Portuguese
Power Supply	Integrated Rechargeable Lithium-ion Battery USB Charge
Unit Dimensions	2.0" x 3.5" x 0.5" (WHD)
Weight	2.1 oz

Specifications and manual are subject to change without notice.

NOTES

NOTES

NOTES

COBY Electronics Corp.

56-65 Rust Street
Maspeth, NY 11378

www.cobyusa.com
www.ecoby.com