

// Freecom

USER MANUAL



MEDIA PLAYER II

EXTERNAL MULTIMEDIA HARD DRIVE / 3.5" / LAN / USB 2.0 / AV

Dear user!

Thank you for buying the **Freecom MediaPlayer II**, a brand-new digital multimedia player that supports dual data access mode via 3.5" HDD inside (not supplied with "Drive In Kit"-model) and 10/100Mbps Network. With this Freecom MediaPlayer II you can easily enjoy Digital Movies, Digital Music, Digital Photos from a 3.5" HDD (when assembled in the device) and from all PC's in your network, directly on your TV or HiFi set. For optimal use and performance we advise you to read this manual carefully before using this product.

Freecom Technologies GmbH • Germany
www.freecom.com

Contents of the box

Please check the contents of the box. At least the following items should be included:

- Freecom MediaPlayer II
- Power adapter
- Remote control (including batteries)
- Audio/Video cable
- USB cable
- Network cable
- CD with manual, safety manual
- Quick Install Guide

Warning !

All rights reserved. The products named in this manual are only used for identification purposes and may be trademarks or registered trademarks of the respective companies. This device was designed for home or office use.

Warning! This device is equipment complying with EN55022 class A. This equipment can cause radio disturbances in a residential area. If this is the case, the user has to take appropriate measures and assume all responsibility and costs for. It may not be used near or with any life-sustaining systems.

Freecom cannot be made liable for any damages, loss of data or damage following thereof -whatsoever (including, without limitation, damages for loss of business profits, business interruption, loss of business information, or other pecuniary loss) arising out of the use of or inability to use this Freecom product, even if Freecom has been advised of the possibility of such damages.

We reserve the right to upgrade our products in keeping with technological advances.

User manual

General Information	page 4
Important note.....	page 4
Specification.....	page 4
Minimum System Requirements	page 5
Precautions	page 6
Warnings and Safety Instructions	page 8

Chapter 1:

Product Overview.....	page 9
Front View	page 9
Back View.....	page 10
Remote control.....	page 11

Chapter 2:

Basic operation	page 13
First steps	page 13
Network Setup under Windows XP and Windows Vista	page 15

Chapter 3:

Using the product.....	page 20
Browse and play the media files	page 20
File Copy	page 22
Setup Menu	page 23

Chapter 4:

Install BT_SAMBA	page 38
Initial installation	page 38
Neighbor Web interface	page 39
BitTorrent Download	page 39
Add new torrent	page 40
Visit neighbor	page 42
Account Management	page 42

General Information

Important note:

The Freecom device has not been developed or conceived for use with disregard to copyrights or other rights to intellectual property. The Freecom device can only be used with material which is the legal property of the user or where the user has a legal licence for this purpose so that such use must be permitted because of these property rights or licenses.

This product is protected by certain intellectual property rights of Microsoft. Use or distribution of such technology outside of this product is prohibited without a license from Microsoft.

Specification

USB host	Support multiple USB storage
USB port	USB 2.0 high speed port
Network connection	RJ45 10/100 M connect
Video output	Composite video / component video / HDMI
Audio output	Stereo / digital HDMI / coaxial
Audio	Format: MP3, WMA, WAV, AAC, OGG, AC3 Bit rate: MP3 32 kbps - 320 kbps WMA 32 kbps - 192 kbps
Video	Video codecs: MPEG 1/2/4, DivX, XviD File types: RM, RMVB, VOB, DAT, AVI, MPG, MPEG, TS
Subtitle	SSA, SMI, SRT, SUB
Picture	JPG / BMP
Picture play mode	Slide show
Power adapter	AC input: 100V~240 V, 50/60 Hz DC output: 12 V, 2 A
Dimension	203 × 164.4 × 51 mm
Weight	About 800 g (Without hard drive)

Minimum System Requirements

PC:

- Intel Pentium III / AMD Duron 900 MHz or higher
- 256 MB RAM (Vista: 512 MB RAM) or higher
- Available USB 2.0, 1.1 Port (USB 2.0 recommended)*
- Available 10/100 Ethernet LAN Port, RJ45 (100 Mbps recommended) or WLAN
- LAN Cable
- For playback on TV, a TV set with PAL or NTSC system is required.
- Supported HDD: Compatible with standard 3.5" SATA Hard Drive
- Internet connection for online warranty registration, software updates and downloads
- Operating system: Windows 2000, Windows XP, Windows Vista

Mac:

- PowerPC G3/G4/G5, Power Book G3/G4 or Intel Mac
- 256 MB RAM or higher
- Available USB 2.0, 1.1 Port (USB 2.0 recommended)*
- Available 10/100 Ethernet LAN Port, RJ45 (100 Mbps recommended) or WLAN
- LAN Cable
- For playback on TV, a TV set with PAL or NTSC system is required.
- Supported HDD: Compatible with standard 3.5" SATA Hard Drive
- Internet connection for online warranty registration, software updates and downloads
- Operating system: Mac OS X v10.3 or higher

ATTENTION! This device has no built-in WLAN. For WLAN support, you have to use a WLAN USB dongle which is optionally available on www.freecom.com.

* USB 2.0 is downwards compatible to USB 1.1. To achieve optimal performance from the Freecom MediaPlayer II your PC should be equipped with an USB 2.0 port.

Precautions

Please read the following in this manual carefully for proper use.

Copyright

- Freecom can not be held responsible for the use of illegal software, audio sources, video sources etc. The user and/or owner of the Freecom MediaPlayer II is legally responsible for the content on the device.

Check supported codec

- The Freecom MediaPlayer II may not play back all media files. Please check the codec type and ensure this is supported by the MediaPlayer II. Please note that possible errors in the media file or use of unrecognized characters may result in improper playback.

Cautions for USB Device

- Connect the power adapter as well when you connect Freecom MediaPlayer II to a PC.
- Do not connect the Freecom MediaPlayer II with a USB cable of more than 3 metres long. Doing so may result in low transfer speeds and/or bad connection.
- We recommend you to use the supplied USB cable by our company.
- If you connect this device to USB 1.1 Host Adapter, the speed is USB 1.1 (Max. 12 Mbps), so we recommend you to connect to USB 2.0 for full speed of max. 480 Mbps.

Cautions for USB Host

- Not all USB devices may be supported by the USB Host port. Please check the compatibility before use or purchase.

Cautions when inserting a HDD

- Only 3.5" SATA type HDD can be used.
- We recommend you to use more than 6 GB HDD. In case you use a harddrive with less than 6 GB, it may cause data loss.

Cautions when using Network connection

- When the Freecom MediaPlayer II is connected to a PC using the Windows file sharing option, be sure to use the Windows Network sharing function.
- The sharing function may not be functioning properly as a result of errors in Windows or the user's computer environment. Freecom can not be held responsible for this.
- Depending on user's network performance and computer environment, data transfer through network may have intermittent data cut-offs.
- Depending on user's wireless network performance and computer environment, data transfer through wireless network may have intermittent data cut-offs.

Cautions for possibility of causing Radio Waves to cross

- Freecom MediaPlayer II may cause Radio Waves to cross, so it is recommended to be alert when you keep devices near the Freecom MediaPlayer II. Especially concerning your health.

Data Backup

- We strongly recommend you to make a data backup to another safe medium. Freecom can not be held responsible for data damage or data loss on the built-in hard drive.

Cautions for drop, shock

- Do not drop the device. It may cause critical damage to the hard drive.

Do not insert materials

- Do not insert any material in the Freecom MediaPlayer II. This may cause a defect or malfunction of the device.

Do not disassemble or modify

- Do not disassemble or modify the Freecom MediaPlayer II.

Do not stack

- Do not place materials, devices or anything else on the Freecom MediaPlayer II.

Cautions for exposure to water, moisture, etc

- Don't expose Freecom MediaPlayer II to oil, water, dust, moisture or rain and wind. Turn off the Freecom MediaPlayer II immediately if exposed to any moist substance or water.
- Do not expose the Freecom MediaPlayer II to heat, keep away from heated areas. Place the Freecom MediaPlayer II in well ventilated places.

Cautions for magnetic materials

- Keep all magnetic devices away from the Freecom MediaPlayer II. Magnets or magnetic devices like speakers may erase or cause damage to data stored on the hard disk.

Warnings and Safety Instructions

Please read and follow the below mentioned instructions. They should be observed in order to prevent injury to the user, damage to the device and damage to property, as well as to ensure safe use of the product. Not following these instructions may cause the unit to malfunction.

To ensure that your Freecom MediaPlayer II functions properly, please take note of the following precautions. If these are not followed, you may void your warranty and damage the Freecom MediaPlayer II.

- Safely remove the Freecom MediaPlayer II via your operating system - the "unplug or eject hardware" option in the Windows taskbar - before disconnecting the USB cable or power cable and before switching off the device. Failing to do so may result in data loss.
- Do not disconnect the Freecom MediaPlayer II from the PC during file transfer. This may result in data loss and an error to the Freecom MediaPlayer II. If this occurs, please run the ScanDisk utility.
- Do not drop the Freecom MediaPlayer II or expose it to other kinds of sudden mechanical shocks as this may result in data loss and damage to the hard drive.
- Do not use the Freecom MediaPlayer II when the ambient temperature is below 10°C or above 35°C.
- If the Freecom MediaPlayer II is moved from a cool environment to a warmer environment, please allow the drive to acclimatize to the ambient temperature before operating the device. Failing to do so may lead to condensation within the drive enclosure, which in turn may cause the drive to malfunction.
- Do not place liquids or drinks on the Freecom MediaPlayer II. When liquids are spilled and get in contact with the electronics within the drive enclosure, it will damage the drive and will cause the drive to malfunction.
- Do not use the Freecom MediaPlayer II in a dusty environment. Dust inside the enclosure may damage the internal electronics and result in drive malfunction.
- Do not use the Freecom MediaPlayer II near magnetic fields.
- The Freecom MediaPlayer II may generate heat when used for a longer period of time.

Furthermore, warranty does not apply to:


- Damages or problems resulting from misuse, abuse, accident, alteration or incorrect electrical current or voltage.
- Any product tampered with or with a damaged warranty seal
- Any product without a warranty or serial number label.
- Batteries and any consumable items delivered with or in the equipment.

Chapter 1: Product Overview

1.1 Front View



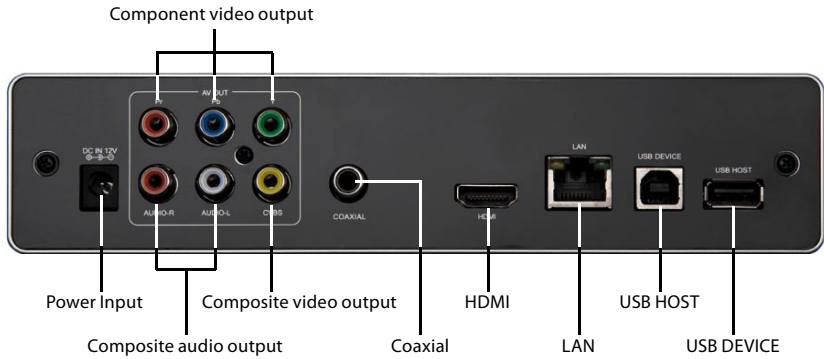
Button definition

Button	Button definition	Description
	Power button	Press shortly to switch on/off the power. Please note: shutting down the device takes ca. 15 seconds!

LED definition

LED	LED definition	Description
HDD	Read/Write LED	LED lights when copy, twinkles when data is transferred.
Power	Power LED	Blue light when device is switched on, red light when device is in standby.

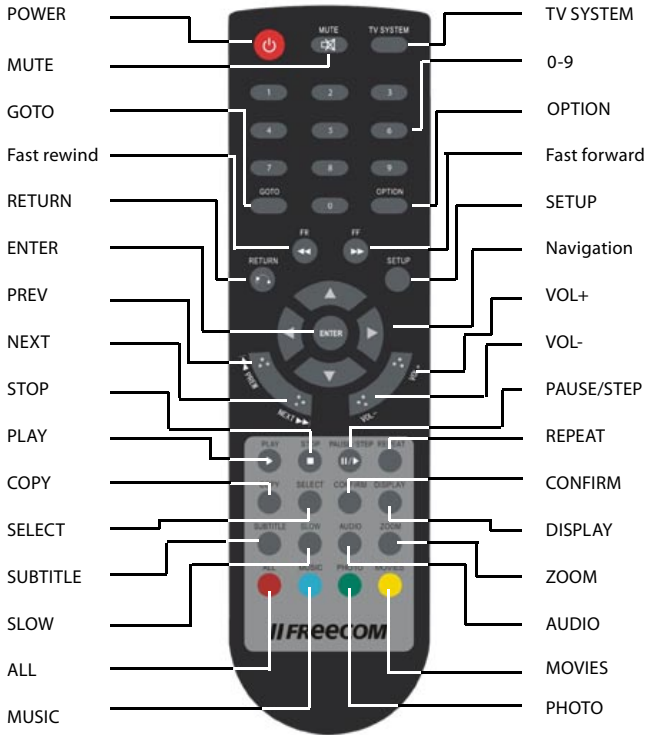
1.2 Back View



Port definition





Port	Port definition	Description
Power Input	Power port	Power input (12V, 2A DC)
Component video output	YPbPr connection	Progressive scan component video output
Composite audio output	Audio connection	Composite audio output
Composite video output	Video connection	Composite video output
Coaxial	Audio output port	Digital audio signal output
HDMI	High definition port	Digital audio and video signal output via HDMI port
LAN	Network port	Network connection via LAN Port
USB DEVICE	USB port	USB port for connection with PC
USB HOST	USB port	USB port for connection of external storage devices or WLAN USB stick

1.3 Remote control



BUTTON

FUNCTION

POWER		Turn device on and off (standby mode)
MUTE		Turn on or off audio output
TV SYSTEM		Press to switch between NTSC, PAL, 480p, 576p, 720p 50Hz, 720p 60Hz, 1080i 50Hz and 1080i 60Hz
0-9		Press to input digits
GOTO		Press to jump to a title, chapter or a specified time
OPTION		Press to select option bar to rename or delete the file
FR		Press to fast rewind from current position and press again to select the speed
FF		Press to fast forward from current position and press again to select the speed
RETURN		Return to the previous menu
SETUP		Enter the Setup Menu



Navigation key for up, down, left and right

ENTER

Press to confirm selection

PREV



Press to return to previous file

NEXT



Press to go to next file

VOL-

Press to decrease the volume

VOL+

Press to increase the volume

PLAY



Press to play file

STOP



Press to stop playback

PAUSE/STEP



Press to pause playback, press again for step playing

REPEAT

Press to set repeat option: chapter, title or off

COPY

Enter the copy mode

SELECT

Press to select a file or folder and then press "confirm" to add or delete file or folder in the playlist

CONFIRM

Press this key to add or delete files in the playlist

DISPLAY

Press to display time, title, information of chapter when playing video and photo

SUBTITLE

Switch subtitle on/off if a subtitle file is available

SLOW

Press for slow motion: (3/4, 1/2, 1/4, 1/8, 1/16x)

Press PLAY to resume to regular play mode.

AUDIO

Switch audio track

ZOOM

Press to zoom when playing back photos or Video:

Photo zoom levels:2x, 4x, 8x, 16x

Video zoom levels:2x, 3x, 4x, 8x

ALL

Press this key to show all files

MUSIC

Press this key to show all audio files

PHOTO

Press this key to show all picture files

MOVIES

Press this key to show all video files

Chapter 2: Basic operation

2.1 First steps

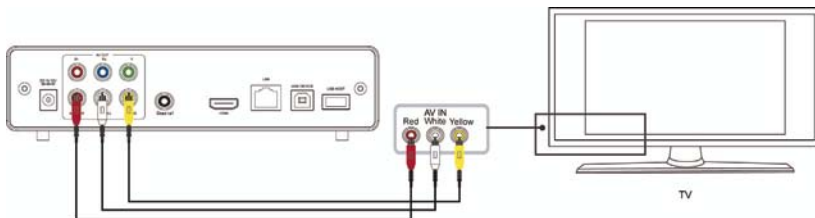
1. Power connection

Take out power adapter from the package and connect it to the device.

2. Connection of TV audio output

The product is designed with multi-output, including composite (AV), component (YPbPr), and HDMI. You can select different interfaces according to various needs. The product can detect video output automatically, making the operation user-friendly and convenient. Please refer to the following instructions how to connect to avoid any problem.

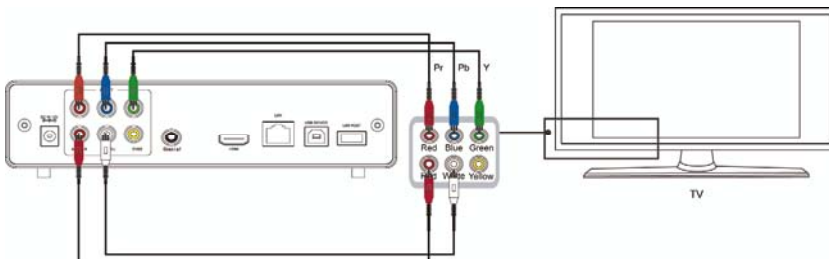
Composite output connection (AV)



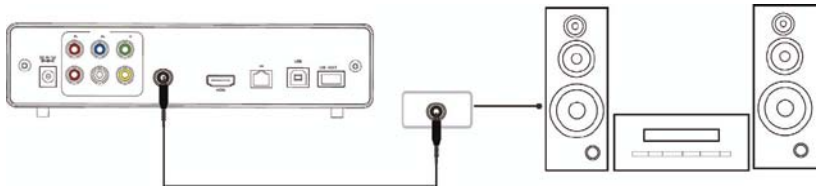
Plug the yellow connector into the AV output of product and AV input of TV, and plug the red and white connector into the audio input of TV or HIFI. Turn on the TV and select AV mode. Turn on the product and TV displays the interface of initiation.

Component output connection (YPbPr)

Plug the YPbPr cable into the output of product and input of TV. Because the cable is only for video signal, another AV cable is necessary. Plug the red and white connector of AV cable into the audio output of product and audio input of TV or HIFI. Turn on TV and select YPbPr mode. Turn on the product and TV displays the interface of initiation.

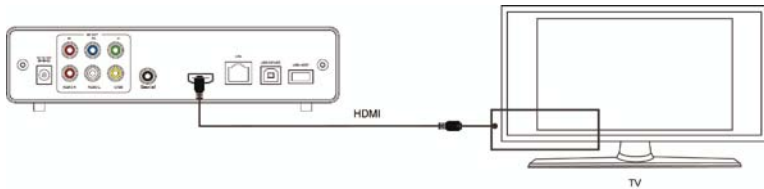


Coaxial output connection



Coaxial output: Connect the product coaxial connector with the coaxial connector of your video or audio device by using a coaxial cable. Enter the product's audio setup and select the Digital Output option "SPDIF LPCM" or "SPDIF RAW". It is possible to enjoy 5.1 high quality sound through a multi channel decoder/amplifier with coaxial input.

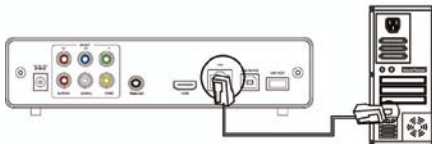
HDMI output mode



HDMI is an output with best audio and video quality which outputs digital video and audio composited at the same time. Connect HDMI cable to output of product and display device with HDMI input. Select HDMI mode in TV until it displays the interface of initiation.

3. Connection and setup of network

The product can play files stored on the PC directly through network. Please connect the RJ45 cable according to the following illustration. The network is connected well when the LEDs of network status and R/W are blinking (on RJ45 connector).



Connect one end of the RJ45 cable to the product like the PC does and connect the video output. Press "setup" key or select "setup" menu in the initiation interface. Select "Network" option in the setup window and press "ENTER" to confirm. It is available for both automatic and manual IP setup. Press "setup" key again to exist after setup. Before access the PC through network by the product, the media files must be shared in the network.

Following is the setup of media file sharing in PC.

2.2 Network Setup under Windows XP and Windows Vista

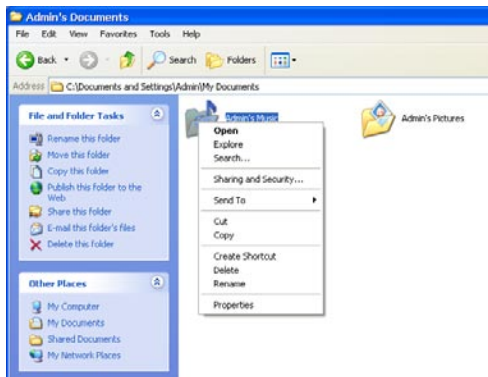
2.2.1 Windows XP

Two conditions are necessary for a successful setup network connection:

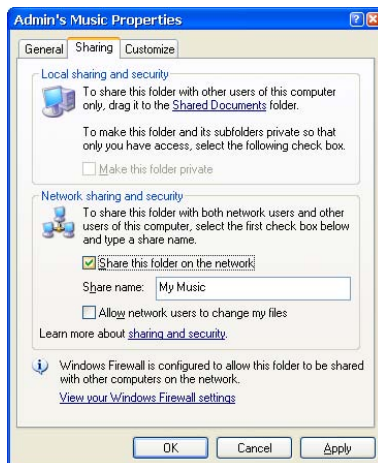
1. Folder sharing and safety setup.
2. Set the same gateway and subnet address.

Procedure of file sharing under Windows XP:

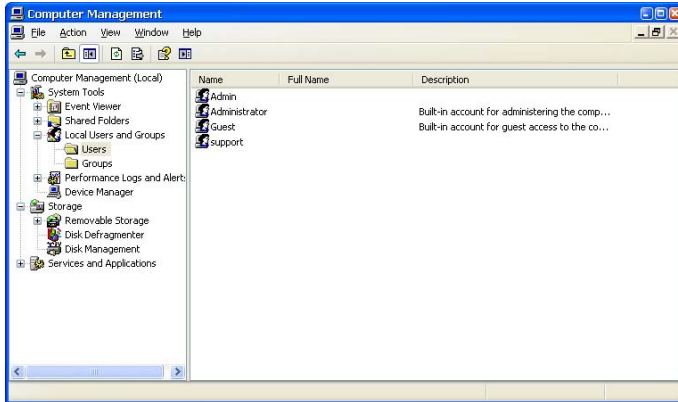
1. Select the folder to be shared, right-click mouse and select the option "Sharing and Security".



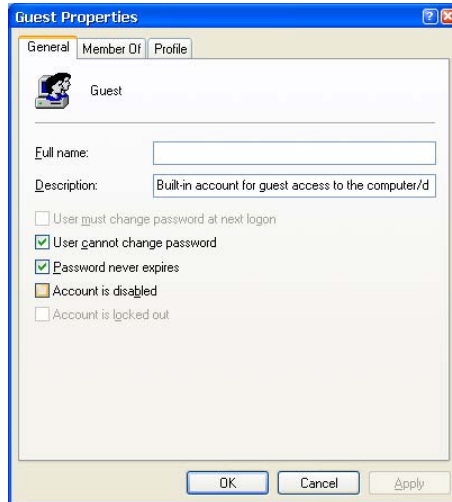
2. Select "Sharing" in the Properties option and select "Share this folder on the network" and click on "Apply" to confirm.



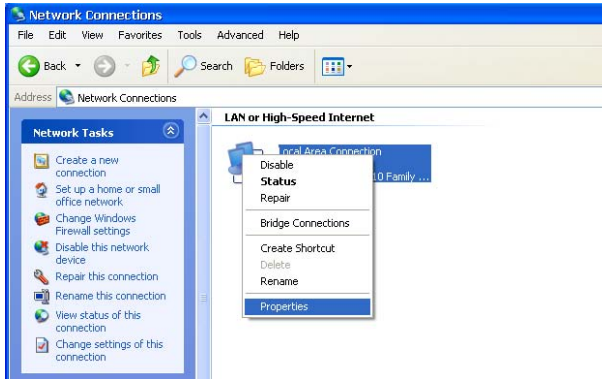
3. Open Control Panel -> Administrative Tools -> Computer Management -> Local Users and Groups" and click "Users" option. Right click "Guest" and select "Properties".



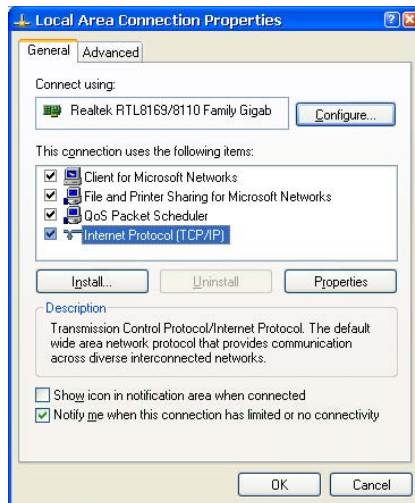
4. Select 'Users can not change password' and 'Password never expires'. Keep the other checkboxes unchecked.



5. Open Control Panel -> Network Connections and select "Local Area connection" Right-click to select "Properties".



6. Select 'Internet Protocol (TCP/IP)' and click on "Properties".



7. Set up the relevant IP address, subnet mask and gateway. This can also be done automatically (DHCP).
8. Click on OK to complete the Network Sharing procedure.

2.2.2 Windows Vista

1. Please make sure that you have administrator rights on your Vista system.
2. Select Control Panel -> User Accounts and Family Safety.
3. Select "User Accounts" -> "Manage another account". Click on the "Guest" account and select "Turn on" if it is turned off.
4. Select the folder to share and right-click on it. Then select the "Share" option.
5. Add the "Guest" account to the list.
6. Select "Share" and then the folder will be shared.

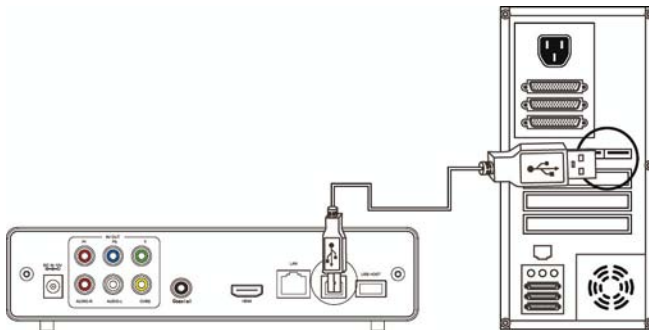
Playback function

With this HDD player, you can browse movie, photo and music files stored in HDD, USB and network. Please enter the file browser to select the media and press "ENTER" button to play the file. It is possible to preview the selected media and press "ENTER" button to play.

Connect to the PC

This HDD Player is also a multimedia file storage device and can be used by connecting to the PC.

1. Connect to the power supply.
While using the HDD player with PC, power supply is required.
2. Connect to PC with USB cable.
Connect the HDD player to PC with USB cable to copy and transfer data.



Follow the instructions as shown in the above picture and connect the device to PC. Power on the PC and enter the system. The PC detects the device automatically and then the device can be used as an external USB storage device. After data transfer is finished, please remove the USB storage device safely (click the USB device icon to stop the USB device and then pull out the USB cable).

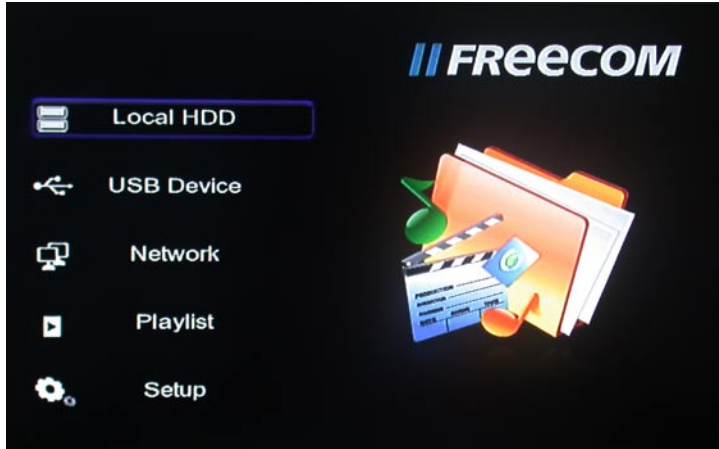
Notes:

- 1. Please don't power off when the device is busy (reading/writing data).**
- 2. If there is no USB detected after connecting the USB cable to the PC pull off the USB cable, wait about 10 seconds and then connect it again.**

Chapter 3: Using the product

3.1 Browse and play media files

Power on the HDD Player. The system shows the main menu after a few seconds. Four options will be available:.

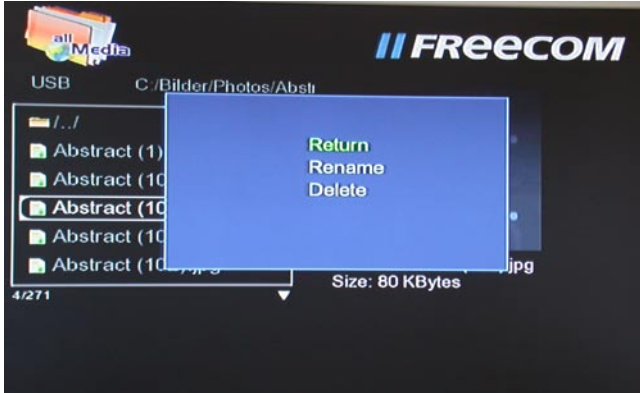


With these functions, you can browse movie, photo and music files stored in HDD, network and USB by pressing the "▲" and "▼" navigation buttons to choose the source device. Press the "ENTER" button to confirm your selection.

To make file browsing and playing easier, there is a function to filter and display all files into different folders named "All", "Music", "Photo" and "Movies". You can switch to any folder by pressing the "◀" and "▶" navigation button on the remote control.

File Edit menu

Select a file or folder by pressing the navigation button. Press OPTION button on the remote control to rename or delete files and press the "ENTER" button to confirm.



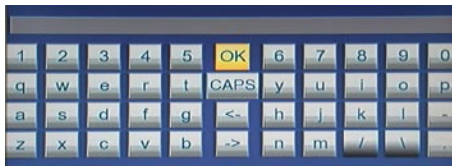
Return

Select to return to the first menu

Rename

Please refer to the following procedure to rename a file:

1. Select Rename.
2. The edit window appears after pressing ENTER key.



3. Use the navigation arrows to select letters and numbers. CAPS to toggle between uppercase and lowercase letters. Press <- to delete, -> to insert a space, ENTER to confirm.
4. Once you finished the new name input, select ENTER to confirm. If you want to cancel the naming during the process, press ENTER to return.

Delete

Please refer to the following procedure to delete a title:

1. Press ▲ and ▼ to select the Delete tab.
2. Press ENTER to confirm and delete the file.
3. Confirmation message will appear. Press ◀ or ▶ and select ENTER.
4. Press ENTER to confirm the delete. Select return to cancel delete.

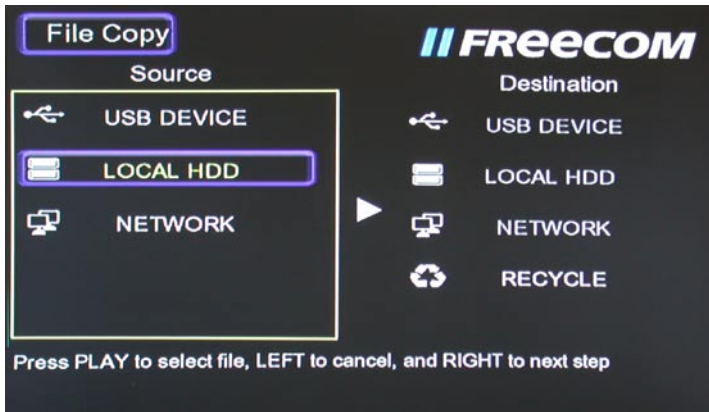
3.1.1 Network

My shortcut

Select a PC in the menu or add one available IP address to access media files in network through My_Shortcuts.

3.2 File Copy

The File Copy function allows copying files between HDD, USB or Network. Press the COPY button on the remote control to copy files from one media to another.



3.2.1 Copy operation

Step 1: Select Source Device

Press ▲ and ▼ to select the device from where files are to be copied. Then press ► to select Destination Device or press ◀ to return.

Step 2: Select Destination Device

Press ▲ and ▼ to select the destination device after go to the Destination sector on the screen. Then press ► for the next step or press ◀ to return.

Step 3: Select copy files or folders

In the Source sector, press ▲ and ▼ to select and press PLAY to select files or folders which you want to copy. "✓" appears on the right side of the selected file or folder. Press ◀ to next step, and press ► to return.

ATTENTION! The maximum number of files that can be selected to copy at a time is 8.

Step 4: Select the destination folder

Press ▲ or ▼ to select a target folder in the destination sector. Press ► for the next step or press ◀ to return.

Step 5: Copy Status

In the menu, select ENTER to copy or select NO to cancel. After file copy is finished, the system will display "File Copy is completed!" or "File Copy failed!". Select "Ok" to return to the Main menu or select "No" to return to the Copy menu.

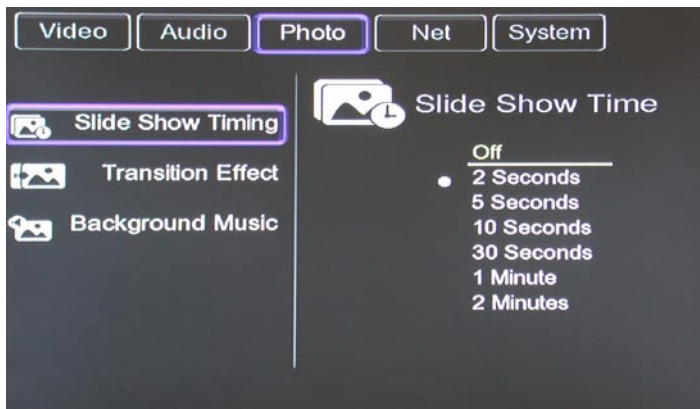
3.3 Setup Menu

Press the "Setup" button on the remote control to enter the Setup menu. It is possible to configure Photo, Audio, Video, Network and System settings.

Select any option by pressing ▲ and ▼ on the remote control and press ENTER to confirm or press RETURN to exit. Press SETUP button again on remote control to exit from the setup menu.

Changing Photos Settings

- | | |
|-------------------|------------------------------------------------------------|
| Slide Show | Set time interval of slide show. |
| Transition Effect | Select transition effect between photos in the slide show. |



- | | |
|------------------|-----------------------------------------------------------------------------------------------------------------------|
| Background Music | The music must be in the same folder the same folder as the pictures, choose background music position by navigation. |
|------------------|-----------------------------------------------------------------------------------------------------------------------|

Changing Audio Settings

- Night Mode "On" "Off" and "Comfort mode" are available
In comfort mode, the volume is restricted automatically so that it would not affect other people from rest or working.
- Digital output The following options are available:
- HDMI LPCM
 - HDMI RAW
 - SPDIF LPCM
 - SPDIF RAW

Changing Video Settings

- Screen Ratio
- Pan Scan 4:3 Displays a wide picture on the entire screen and cuts off the redundant portions when a standard 4:3 TV is connected.
 - Letter Box 4:3 Displays a wide picture with two black borders on top and bottom of 4:3 screen when a standard 4:3 TV is connected.
 - 16:9 Compresses the image to convert the whole image when a 16:9 TV is connected.
- Brightness Select to set brightness level.
- Contrast Select to set contrast level.
- TV System Select to adjust TV system.



Changing HDMI settings

Connect the HDMI cable before usage, adjust TV mode to HDMI, then video appears on TV screen. Please refer to "Changing Audio Settings" and "Changing Video Settings" if you want to change HDMI settings.

Changing Network Settings

Note: A WLAN USB Stick is optionally available on www.freecom.com.

Wired LAN Setup

and

Wireless LAN Setup

Wireless LAN Setup:

Check the following items before using this function:

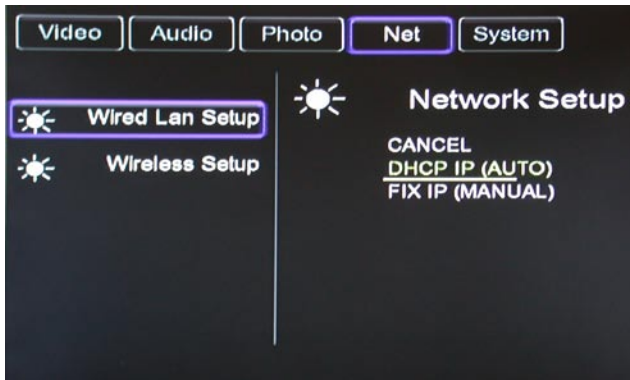
- Connection between product and network
- Network protocol is available
- Files are shared

Auto: Automatically set IP address

Manual: Select IP address, subnet address and default gateway. These can be entered through navigation and numeric key. Press "ENTER" to confirm.

Wired LAN Setup

DHCP IP (AUTO) : Set the DNS server IP address automatically.



FIXED IP (MANUAL)

When using Fixed IP, it is required to enter the following:

- IP address
- Subnet Mask
- Default Gateway.

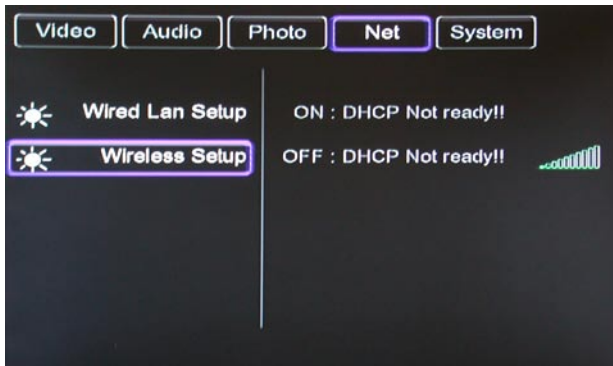
If assistance for the above settings is required, please contact your network administrator.

Press ▲ ▼ ◀ ▶ to navigate. Use numeric keys to enter the data and press "ENTER" to confirm.

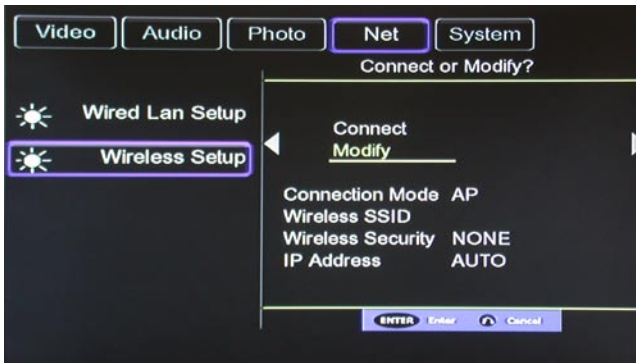


Wireless Setup

Enter the SETUP by pressing the SETUP button on the remote control. Select NET -> Wireless Setup and press OK to enter.



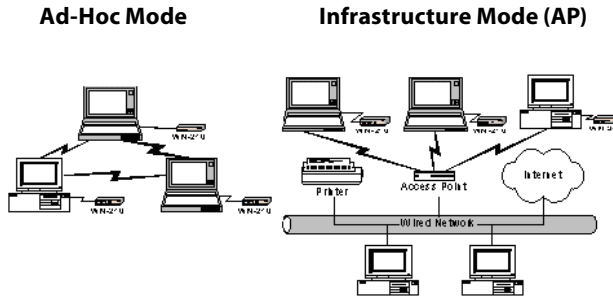
When using this feature for the first time, select MODIFY and follow the setup step-by-step.



Select INFRASTRUCTURE or PEER TO PEER, according to your needs.

Wireless LAN Connection

Freecom MediaPlayer II supports two types of wireless structure modes: Infrastructure mode & Ad-Hoc mode (Peer-to-peer).



Ad-Hoc Mode (Peer-to-peer)

1:1 wireless LAN connection type between wireless adapter and Freecom MediaPlayer II without wireless access point.

Infrastructure Mode (AP)

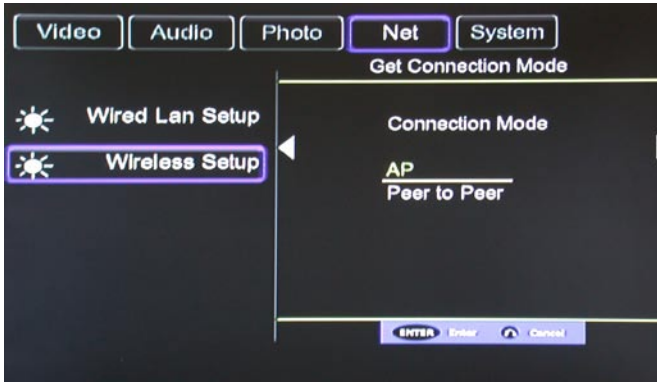
Wireless LAN connection type with Wireless Access Point.

Wireless AP (Infrastructure Mode) or Wireless Adapter (Ad-Hoc Mode) is needed for wireless connection. IEEE 802.11g wireless standard is recommended for better wireless environment. Freecom MediaPlayer II is compatible with IEEE 802.11g & b standard.

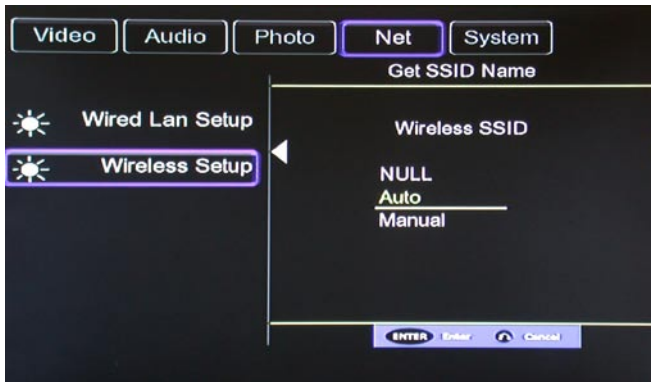
Infrastructure Mode

EN

3



You can insert a USB wireless network card to the USB HOST interface on startup of the device or you can insert a USB wireless network card at this time. The screen will show WIFI PLUG-IN.



"Auto" allows to automatically search for Wireless SSID.

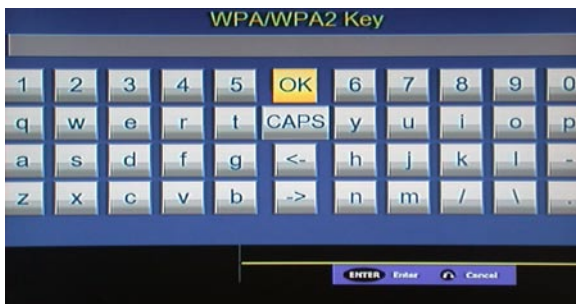


Select the encryption mode of your Access Point:

- Open System
- Shared Key (WEP)
- WPA/WPA2 Key



and press ENTER on the remote control. Enter your password, if required.





You can choose DHCP IP (AUTO) to obtain a dynamic IP or choose FIX IP (MANUAL) to set a fixed IP.



The parameters are shown in the SETTING LIST as follows :



Press ENTER on the remote control. After the connection was established successfully, you will see a summary where IP address, subnet mask and default gateway are shown. Press ENTER again to return to the Network Setup. You will now see the IP address of your device and an indicator showing the signal strength of your connection.

Select "NETWORK" in the main menu. You will see not only "My_Shortcuts" and "My_Neighbors", but also all shared folders in your network. This indicates the success of your wireless connection setup.



Peer-to-peer mode (Ad-hoc mode)

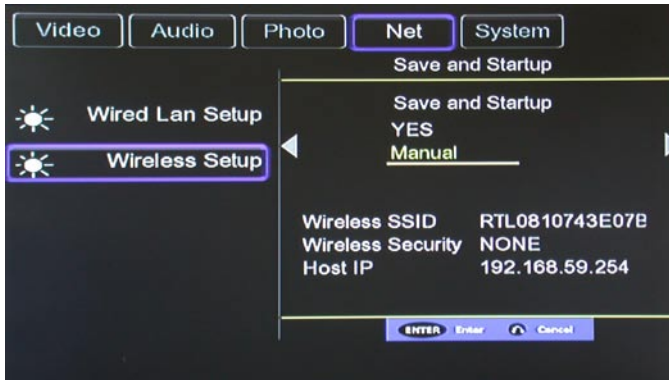
Use "Peer-to-peer" to create a wireless network between your Mediaplayer and another computer without using a WLAN router. Such networks are sometimes also referred to as ad-hoc networks.

To establish a peer-to-peer network a USB WLAN stick for the Mediaplayer and a WLAN-capable computer/notebook are required.

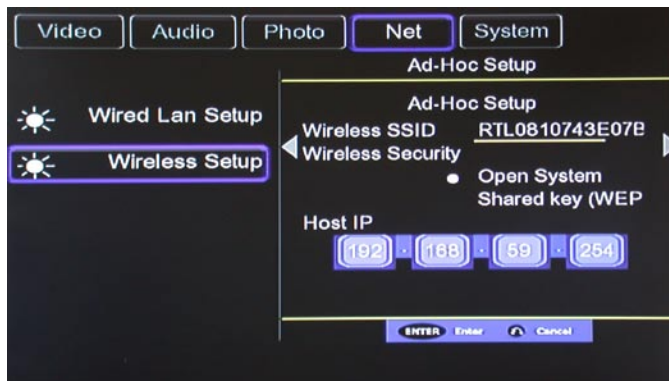
See the help of your operating system or the manual of your WLAN USB Stick on how to setup an ad-hoc network on your computer.



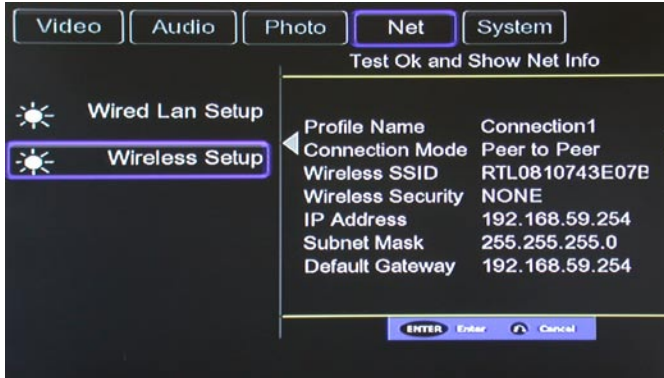
Please select "Manual " for setting parameters.



Set the name of product in wireless network as wireless SSID. Set the host IP address and make sure that the IP address does not conflict with the USB wireless network card IP addresses of your computer.



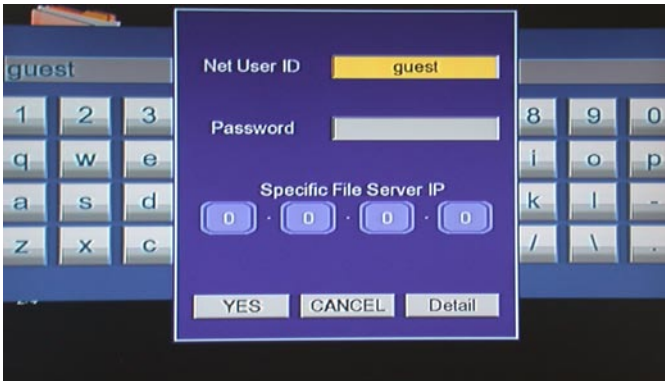
Save settings and test. After successful test, network information will be shown. Press ENTER to return to the Network Setup.



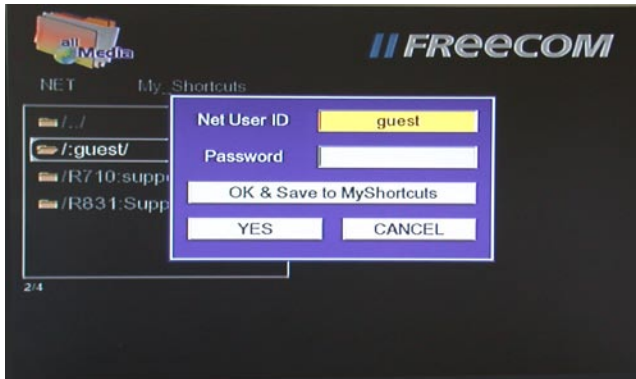
In the main interface of the " NETWORK ", select "MY_SHORTCUTS".



Press the "Option" button on the remote control. In the pop-up window select "add" to add a new shortcut. The user will be GUEST, as IP address the IP address of the computer in your peer-to-peer network has to be entered.



Save settings and select the shortcut to enter. You will now have access to the IP address of the host to share the contents of the host.



Changing System Settings

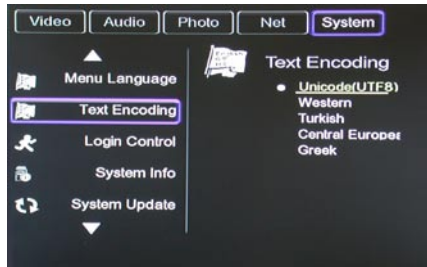
EN

3

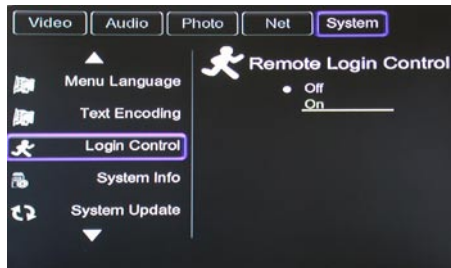
Menu Language Choose the OSD (On Screen Display) language.



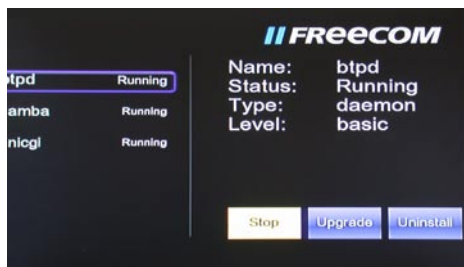
Text Encoding Change character encoding.



Login Control Activate login control (password) for the device web interface.

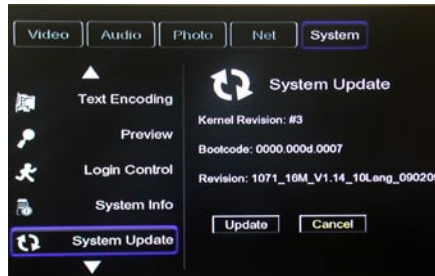


System Info Start, stop, upgrade or uninstall system services.



System Update

Upgrade your system here.



HDD Format

Use this option to format the built-in HDD.

ATTENTION! The internal hard disk will be formatted in NTFS format. Mac users have read-only access when connecting the device via USB to their Mac. To copy data from Mac to the Mediaplayer, network connection must be used.



Restore Default

Restore factory settings of your Mediaplayer.

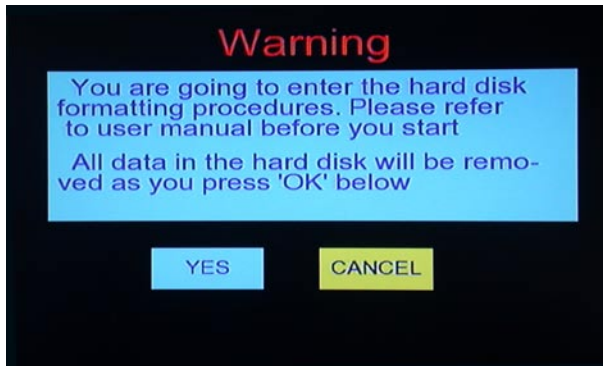


Chapter 4: Installing BT_SAMBA

BT Player is a system software, it consists of the operating system (Linux+AP) and the application software (BT_SAMBA).

4.1 Initial installation

When inserting a hard disk to the system for the first time, the system will start with the hard disk format interface.



You can also press "SETUP" on the remote control to open the Setup menu and select "HDD Format" to format HDD.

Step 1: Press "▲" and "▼" on the remote control to make a selection.

When highlighting the YES button, press "ENTER" to enter the next step. Otherwise, select "Cancel" to return.

Step 2: Hard disk format

Press "▲" and "▼" on the remote control to select "Back" or "Format". When the "Format" button is highlighted, press "ENTER" to start. Otherwise, select "Back" button to go back.

Step 3: Install BT/Samba Extension

After HDD format is complete, the system will install BT/Samba automatically. Please select OK for the next step. The system will auto install according the following steps:

1. Install BT/Samba Extension
2. Install Bit-Torrent Support
3. Install Samba Server Support
4. Install Web Support

When the installation is complete, the system will display a success message at the end of every step.

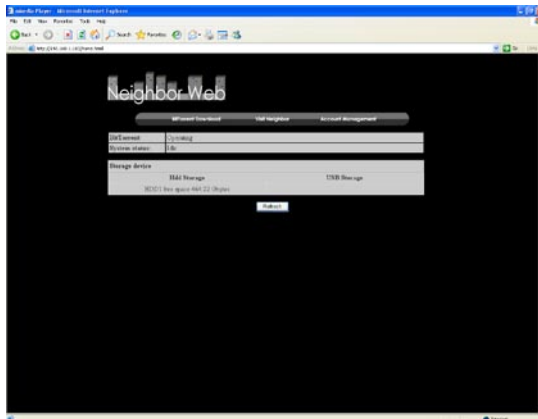
Step 4: Congratulation page

When formatting is finished, the system will display a congratulation page. Select OK button and Press "ENTER" to exit. The system will boot up automatically.

4.2 Neighbor Web interface

When the Mediaplayer has a network connection, you can use the player's IP address to access the "Neighbor Web" interface of the Mediaplayer.

Open the Internet Explorer and enter the Mediaplayer IP address. The Neighbor Web will display the Bittorrent and Player Status.




At Home page, the "Neighbor web" will display BT Player's status and storage device.

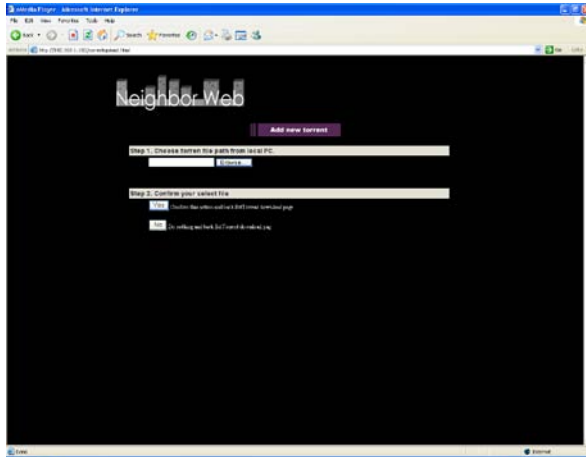
4.3 BitTorrent Download

At the home page, select "BitTorrent Download" to open the download interface.

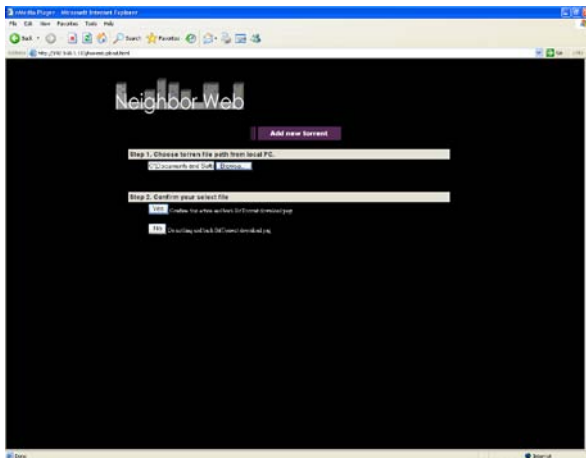


4.4 Add new torrent

Select  to add a new torrent download.



On the "Add new torrent" page, click the "Browse" button to choose a torrent file path from local PC. When you select a torrent file, press "Open" button to add.



Next, click "Yes" to confirm your selected file and to go back to the BitTorrent download page, otherwise click "No" to do nothing and to go back to the BitTorrent download page. When selecting "Yes", you will automatically be redirected to the torrent download page.

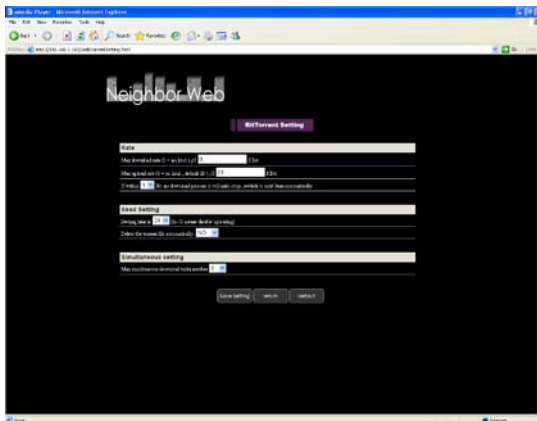
1. Download Page



When clicking on a torrent file name, at the bottom of the page the torrent file information will be displayed. When the box on the left side of the file name is checked, it means that the file is selected. You can now select "Start", "Stop", "Delete", "Refresh" and sort order "up" and "down".

2. BitTorrent Setting

Press "Setting" to open the BitTorrent setting page.



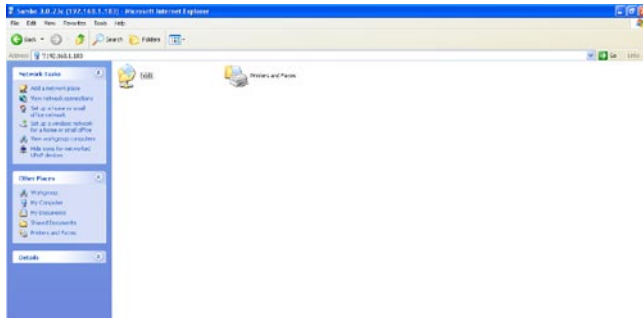
Set maximum download rate, maximum upload rate and seeding setting in the setting page.

When setting is completed, click to save, click to return or click to restore default settings.

4.5 "Visit neighbor" function

On the device home page, select "Visit neighbor" to browse the HDD files.

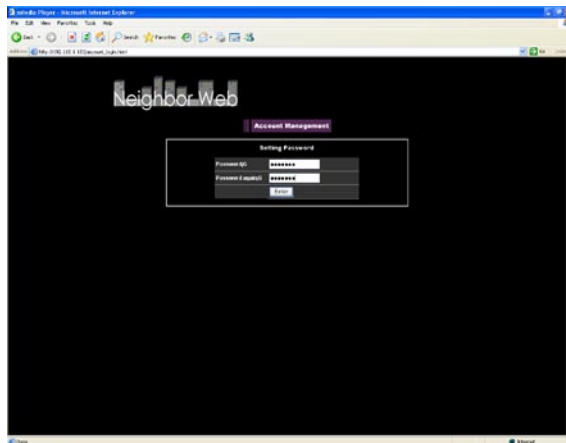
ATTENTION: This feature is only available when using the Internet Explorer! It will not work with other browsers, e.g. Firefox or Opera.



4.6 Account Management

On the device home page, select "Account Management" to access the Account Management page. When "Account Management" cannot be started, please confirm in the MediaPlayer Setup that Login control is set to ON.

The user name is Admin and the default password is 123. Please set the password according to your requirements.



Login password can be modified here. Please enter the password twice and click "Enter" to confirm. When the modification was successful, press "Confirm" and return. Please note the user name cannot be changed.

WARRANTY

(valid in Europe/Turkey only)

We thank you for purchasing this Freecom product and hope you will enjoy using it. In order to avoid unnecessary inconvenience on your part, we suggest reading the quick install guide, instruction manual and any additional electronic and or printed manuals. When problems occur we have a database with Frequently Asked Questions (FAQ) on our Freecom website (www.freecom.com), please check this site before you contact the helpdesk.

Your Guarantee

All Freecom products come with unlimited technical phone and web support. By this Guarantee, Freecom warrants their products to be free from defects in material and workmanship for a period listed below from the date of its original purchase. If during this period of guarantee the product proves defective due to improper materials or workmanship, Freecom will, without charge for labour or parts, at its sole discretion, repair or replace the product or its defective parts upon the terms and conditions set out below.

Conditions

This guarantee will be granted only when the original invoice or sales receipt (indicating the date of purchase, product and serial number) is presented together with the defective product and a Freecom RMA number received from the Freecom Website or given by a Freecom Service Center. Freecom reserves the right to refuse the free-of-charge guarantee services when the date of purchase of the product cannot be proven. This guarantee will not apply if the RMA number is missing, the serial number on the product has been altered, removed or made illegible.

This guarantee covers only the hardware components packaged with the product. This guarantee covers none of the following: (a) any consumable supplied with the product, such as media or batteries; (b) damage to or loss of any software programs, data or removable storage media; (c) any damage resulting from adaptations, changes or adjustments, which may have been made to the product, without the prior written consent of Freecom; (d) attempted repair by any party other than authorized by Freecom and (e) accidents, lightning, water, fire or any other such cause beyond the reasonable control of Freecom.

With respect to all services provided, Freecom is not responsible for any damage to or loss of any programs, data or other information stored on any media or any part of any product serviced. Freecom is not liable for the consequence of business loss in case of system failure. Be sure to exclude all parts not covered by this guarantee prior to returning the product to Freecom. Freecom is not liable for any loss or damage to these items. If during the repair of the product the contents of the hard drive are altered, deleted or in any way modified, Freecom is not liable whatsoever.

Repair parts and replacement products will be provided on an exchange basis and will be either new, equivalent to new or reconditioned. All replaced parts and products become the property of Freecom. The period of guarantee for any product or part repaired or replaced in warranty shall be the balance of the original guarantee. Repairs or replacements on product or parts out of warranty carry **6 (six)** months guarantee.

