

DVD VCD CD MP3 JPG (Support MPEG4,DivX)



**PYLE®**  
**view**

**DVD**

## **Operating Instructions**

Adjustable Headrests w/Built-in 7" TFT Monitor & DVD Player

- PL7DHRG
- PL7DHRT
- PL7DHRB



## Content:

---

<b>1</b>	<b>PRECAUTIONS.....</b>	<b>01</b>
<b>2</b>	<b>CAUTIONS ON USING THIS PLAYER</b>	<b>03</b>
<b>3</b>	<b>CHECKING ACCESSORIES.....</b>	<b>05</b>
<b>4</b>	<b>SPECIFICATION.....</b>	<b>06</b>
	TYPES OF DISCS PLAYABLE ON THIS PLAYER.....	06
	SPECIFICATIONS.....	06
<b>5</b>	<b>PART NAMES AND FUNCTIONS.....</b>	<b>07</b>
	PART IN THE FRONT OF THE MAIN UNIT.....	07
	PART IN THE LEFT SIDE OF THE MAIN UNIT.....	07
	PART IN THE TOP OF THE MAIN UNIT.....	07
	MAIN UNIT CONTROL SECTION.....	08
	REMOTE CONTROL UNIT.....	09
<b>6</b>	<b>USING REMOTE CONTROL UNIT.....</b>	<b>11</b>
	PRECAUTIONS BEFORE USING REMOTE CONTROL UNIT.....	11
	REMOTE CONTROL UNIT OPERATING RANGE.....	11
	INSTALL BATTERY FOR REMOTE CONTROL UNIT.....	12
<b>7</b>	<b>CONNECTING THE PLAYER TO OTHER COMPONENTS.....</b>	<b>11</b>
	CONNECTING TO AC-DC ADAPTER.....	13
	CONNECTING EARPHONE.....	13
	CONNECTING TO USB STORAGE.....	14
	CONNECTING TO MEMORY CARD (SD/MMC/MS)	14
	CONNECTING TO A TV SET.....	15
	CONNECTING TO A N AMPLIFIER THAT HAS NOT THE DIGITAL AUDIO DECODER (DOLBY/DTS/MPEG).....	16
	CONNECTING TO AN AMPLIFIER THAT HAS DIGITAL AUDIO DECODER (DOLBY/DTS/MPEG).....	17
	CONNECTING TO A ACTIVE SPEAKER SYSTEM..	18
	CONNECTING TO A AUDIO/VIDEO PLAYER SYSTEM.....	19

## Content:

---

<b>8</b>	<b>BASIC OPERATIONS..... 20</b>	<b>9</b>	<b>MAIN UNIT SETTINGS..... 30</b>
	TURNING ON/OFF THE MAIN UNIT..... 20		SELECTING A TV SYSTEM..... 30
	PLAYING DISCS..... 21		SETTING SCREEN SAVER..... 30
	REMOVING DISCS..... 21		SELECTING A TV SCALE..... 31
	MODE SETTINGS (BRIGHTNESS/CONTRAST/ COLOR/TFT DISPLAY MODE/TFT REVERSE MODE/AV OUT/IN MODE/VOLUME)..... 22		SETTING DIGITAL AUDIO OUTPUT..... 31
	STOPPING THE PLAYING..... 23		SETTING PARENT LOCK..... 32
	PAUSING THE DISC..... 23		SETTING PARENT LOCK LEVEL..... 32
	SCANNING FORWARD AND BACKWARD... 23		SETTING FM TRANSMITTER (OPTION)..... 32
	SLOW PLAYING THE DISC..... 23		DEFAULT SETTING..... 32
	REPEAT PLAYING THE DISC..... 24		SELECTING A OSD LANGUAGE..... 33
	SEARCHING THE DISC..... 24		SELECTING AN AUDIO LANGUAGE..... 33
	ZOOM PLAYING..... 24		SELECTING A SUBTITLE LANGUAGE..... 33
	PROGRAM PLAYING..... 25		SELECT A MENU LANGUAGE..... 33
	USING OSD..... 26	<b>10</b>	<b>TROUBLE SHOOTING..... 34</b>
	SELECTING A SUB-TITLE..... 26		
	SELECTING AN AUDIO..... 26	<b>11</b>	<b>The headrest DVD player and The headrest monitor operations ..... 35</b>
	SELECTING AN ANGLE..... 26		
	PLAYING MP3 AND JPEG DISC..... 27		
	PLAYING THE FILE STORING IN A USB STORAGE..... 28		
	PLAYING THE FILE STORING IN A MEMORY CARD..... 28		
	USING FM TRANSMITTER (OPTION)..... 29		

Thank you for purchasing DVD player. Please read this manual carefully before operating and reserve it for future reference. It will be helpful to you if you encounter any operational problem.

**WARNING:** TO REDUCE THE RISK OF FIRE OR ELECTRIC SHOCK, DO NOT EXPOSE THIS APPLIANCE TO RAIN OR MOISTURE, DRIPPING OR SPLASHING AND THAT NO OBJECTS FILLED WITH LIQUIDS, SUCH AS VASES, SHALL BE PLACED ON THE APPARATUS. DANGEROUS HIGH VOLTAGES ARE PRESENT INSIDE THE ENCLOSURE. DO NOT OPEN THE CABINET. REFER SERVICING TO QUALIFIED PERSONNEL ONLY.

**ATTENTION:** TO PREVENT ELECTRIC SHOCK, MATCH WIDE BLADE OF PLUG TO WIDE SLOT, FULLY INSERT.

**LASER:** This Digital Video Disc player employs a Laser System. To ensure proper use of this product, please read this owner's manual carefully and retain for future reference. Should the unit require maintenance, contact an authorized service location - see service procedure.



Use of controls, adjustments or the performance of procedures other than those specified may result in hazardous radiation exposure.

To prevent direct exposure to laser beam, do not try to open the enclosure.

Visible and invisible laser radiation when open and interlocks defeated.

**DO NOT STARE INTO BEAM**

## LASER

Type	Semiconductor laser GaAlAs
Wave length	650 nm/780nm
Output Power	5mW
Beam divergence	60degree

**CLASS 1  
LASER PRODUCT**

**WARNING:**

To reduce the risk of fire or electric shock, do not expose this appliance to rain or moisture.

**CAUTION:**

Use of controls or adjustments or performance of procedures those specified may result in hazardous radiation exposure.

## CAUTION

### **RISK OF ELECTRIC SHOCK. DO NOT OPEN**

To reduce the risk of electric shock, do not remove cover (or back).  
No user serviceable parts inside. Refer servicing to qualified service personnel.



The lightning flash with arrowhead symbol, within an equilateral triangle, is intended to alert user to the presence of uninsulated “dangerous voltage” within the product enclosure that may be of sufficient magnitude to constitute a risk of electric shock to persons.



The exclamation mark within an equilateral triangle is intended to alert the user to the presence of important operating and maintenance (servicing) instructions in the literature accompanying the appliance.



**CAUTION:**

**INVISIBLE LASER RADIATION WHEN OPEN AND  
INTERLOCK FAILED OR DEFEATED.  
AVOID DIRECT EXPOSURE TO LASER BEAM.**

## Cautions on Using this Player

2

### When using with car power cable in cars

Please turn on the engine and then connect with the car power cable for using.

### Cleaning the player

Normally clean the player using a soft, dry cloth. For tough dirt, apply some neutral detergent diluted in 5 to 6 parts water to a soft cloth, wring out thoroughly, wipe off the dirt, then wipe the player with a dry cloth. Note that alcohol, thinner, benzene, insecticides, etc., may cause the print or coating to peel off. Also avoid leaving rubber or plastic products in contact with the player for long periods of time, as this may damage the cabinet. When using chemically treated cloths, read the cloth's instructions carefully. Always unplug the power cord from the power outlet before cleaning the player.

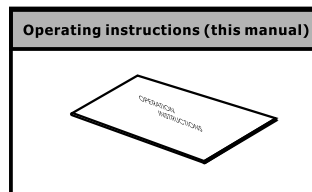
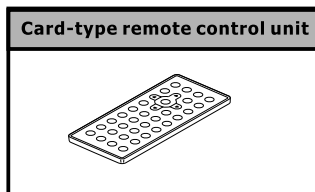
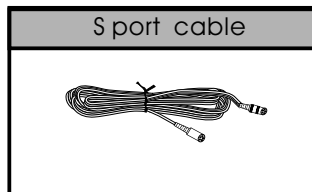
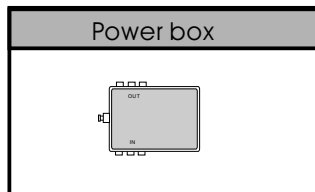
To clean dirt off the liquid crystal display, wipe the display gently with a soft, dry cloth (such as an eyeglass cleaning cloth). Note that leaving water droplets on the display for long periods of time may result in discoloration or stains. For tough dirt, use a commercially available liquid crystal display cleaner.

### Copyrights

Unauthorized duplication, broadcast, public performance or rental of discs is prohibited by law.

## Checking the Accessories

After unpacking, check that all the accessories listed below are included.



3

# Specifications

The discs listed on the below can be played on this player without any adapter



**DVDs**      **12cm**



**Vedio CDs**      **12cm**



**Audio CDS**      **12cm**



**MP3 CDs**      **12cm**



**JPG CDs**      **12cm**

## Noted:

- Don't using the disc that is scratched seriously
- 8cm disc can not be played on this player

## Specifications

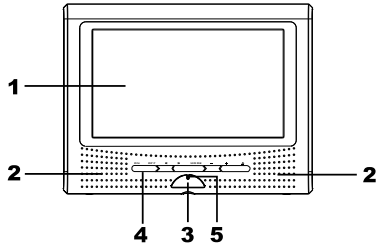
<b>Disc type</b>	DVD Vedio VedioCD	CD-DA MP3 JPEG
<b>Audio output</b>	LINE OUT (20Hz-20kHz) Earphone output Optical digital audio output	
<b>Video output</b>	Vedio output Video output: 1.0Vpp/75ohm	
<b>LCD panel</b>	7" color TFT Pixels: 1440×234	
<b>Power</b>	AC-DC adapter 12V/1.5A Battery 7.4V/3100mAh	
<b>Unit size</b>	192mmX148mmX26mm	
<b>Weight (include battery)</b>	850g	
<b>Working temperature</b>	5 °C ~ 45 °C	

4



## Part names and functions

### Part in the front of the main unit



#### 1. LCD display

#### 2. Speakers

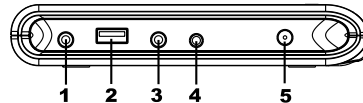
#### 3. IR receiver window

#### 4. Control keypad

#### 5. Power LED indicator

- LED light: (1) when connecting AC-DC adapter or battery  
(2) main unit in standby mode
- LED flash: when playing CD/MP3 audio disc and LCD off
- LED off: main unit is turning on

### Part in the left of the main unit



#### 1. Earphone jack

Connecting earphone

#### 2. USB(1.1) socket

Connecting USB storage

#### 3. Video output/input

Output or input video signal

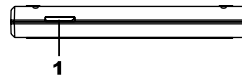
#### 4. Audio output/input, optical digital audio output

Output or input audio signal, optical digital audio output

#### 5. 12V DC input

Connecting to AC-DC adapter

### Part in the top of the main unit

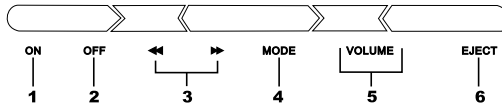


#### 1. Memory card socket

5

# Part names and functions

## Keypad in the main unit



### 1. Play/Pause/On button

- Press this to play disc. When press this in the play mode, pause mode is set. Press again to resume playback.
- Press this for 1.5 seconds to power on the unit.

### 2. Stop/Off button

- Press this to stop play mode
- Press this for 1.5 second to power off the unit.

### 3. Previous/Next buttons

- Using these buttons to scan forward or backward through the tracks or chapters.
- Press these buttons for 1.5 seconds in fast forward or backward play mode. (X2, X4, X8, X20)

### 4. Mode, + and - buttons

Press Mode to switch LCD mode: Brightness, Color, Contrast, LCD display mode, Reverse, AV output/Input mode, Volume and then using +/- buttons to adjust.

- Brightness: level 0 level 12
- Color: level 0 level 12
- Contrast: level 0 level 12
- LCD display mode: switch screen size 16:9 4:3
- Reverse: switch screen normal or reverse



Normal



Reverse

- AV output/input mode: press +/- in AV output mode or AV in mode.
- Volume: level 0 level 15

### 5. +/- buttons

- Press these buttons to increase/decrease the volume when the main unit is in play mode.
- Press these buttons to adjust LCD mode when in LCD mode

### 6. Eject button

- Press this button to eject the disc when a disc is in the main unit

5